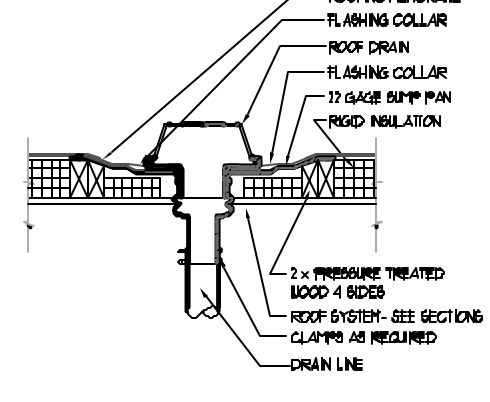
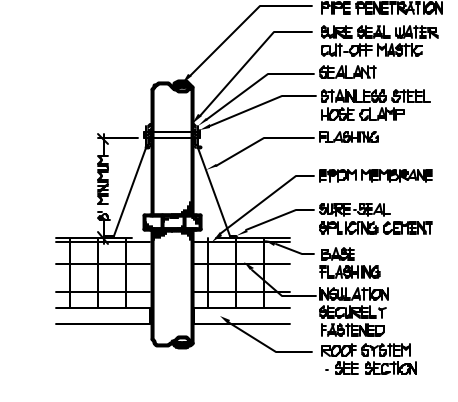
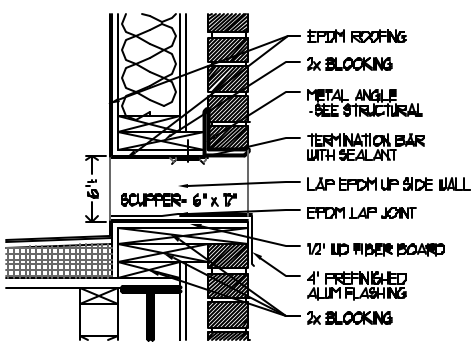
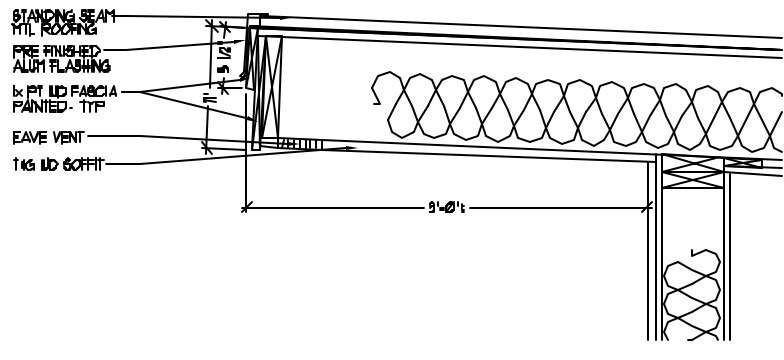
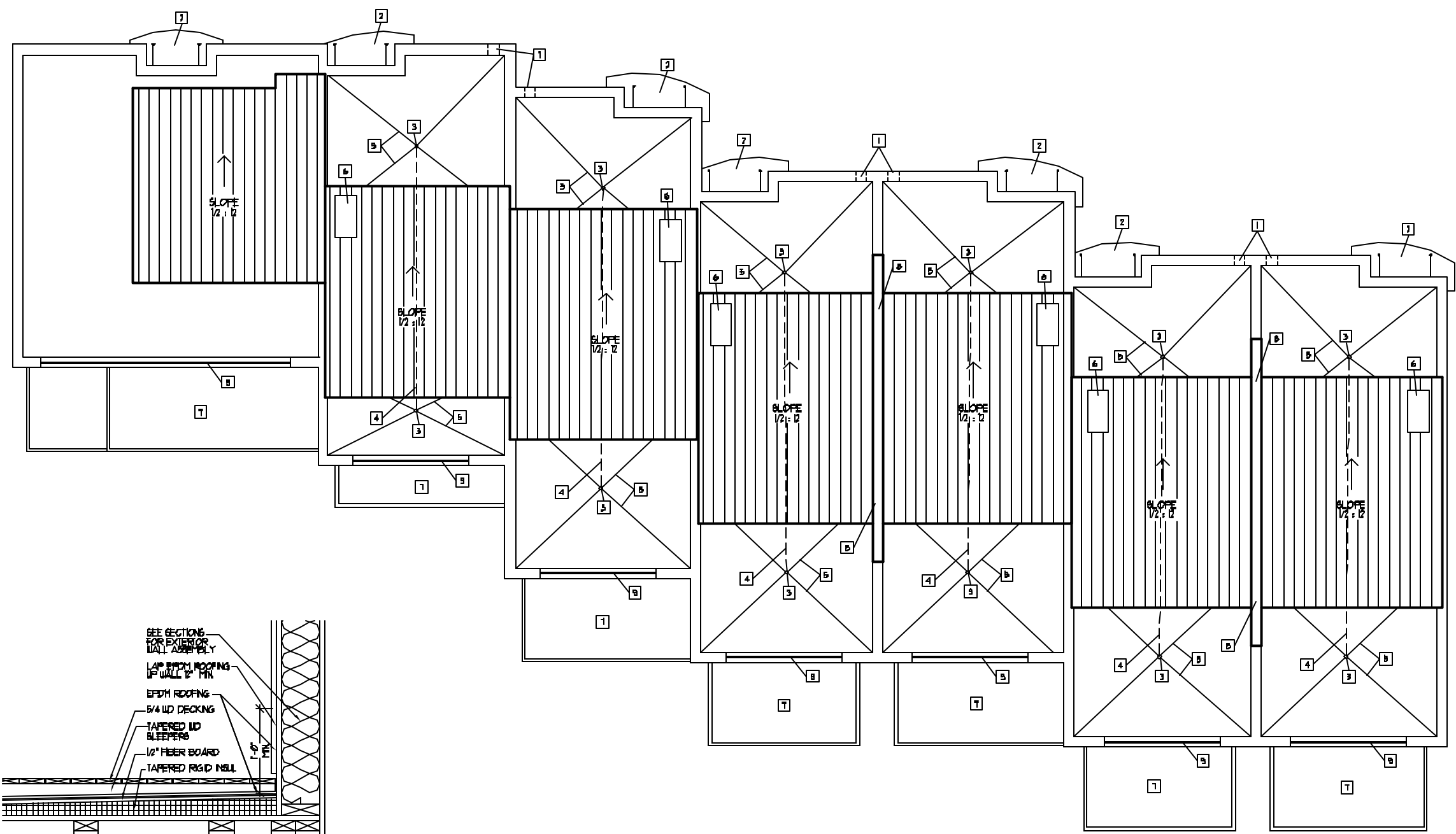
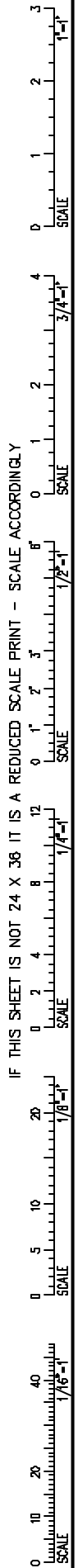


IF THIS SHEET IS NOT 24 X 36 IT IS A REDUCED SCALE PRINT - SCALE ACCORDINGLY



FLOOR PLAN - GENERAL NOTES

- ROOFS OF ALL PENTHOUSES TO BE STANDING BEAM MITL. ROOF SYSTEM (COLOR BY OWNER). SEE SPEC.
- REAR ROOFTOP DECKS TO HAVE MD. DECKING SYSTEM OVER ITS ENTIRETY. SEE DETAIL 7 OF AS.
- FRONT (FEDERAL ST. SIDE) ROOFTOP DECKS TO HAVE MD. DECKING SYSTEM 3'-0\"/>

ROOF PLAN - KEYED NOTES

- THRU-WALL OVERFLOW SCUPPER SEE DETAIL 4 OF AS.
- CURVED ENTRANCE CANOPY (BELOW).
- ROOF DRAIN. MAINTAIN ROOF MANUF. WARRANTY (SEE DETAIL 6 OF AS).
- THE FRONT (FED. ST. SIDE) ROOF DRAIN TO REAR ROOF DRAIN WITHIN FLOOR JOIST SPACE BELOW. THEN RUN DRAIN TO BACK CORNER OF EA. UNIT WITHIN THE EXT. WALL AND DISCHARGE THROUGH THE WALL TO LAWN AREAS.
- LINE OF TAPERED ROOF INSL. VALLEY.
- 24\"/>

PORT CITY ARCHITECTURE
 65 NEWBURY STREET
 PORTLAND, ME 04101
 207.761.9000
 fax: 207.761.2010
 info@portcityarch.com

CONSULTANTS:

44 FEDERAL STREET CONDOMINIUMS
 44 FEDERAL STREET
 Portland, Maine 04101

NO.	DATE	DESCRIPTION
2	1-1-25	PERMIT SET
1	6-8-25	REVIEW SET
*		DATE

ROOF PLAN AND DETAILS

Drawn By: MC
 Checked By: AGH

A3

PERMIT SET - NOT FOR CONSTRUCTION