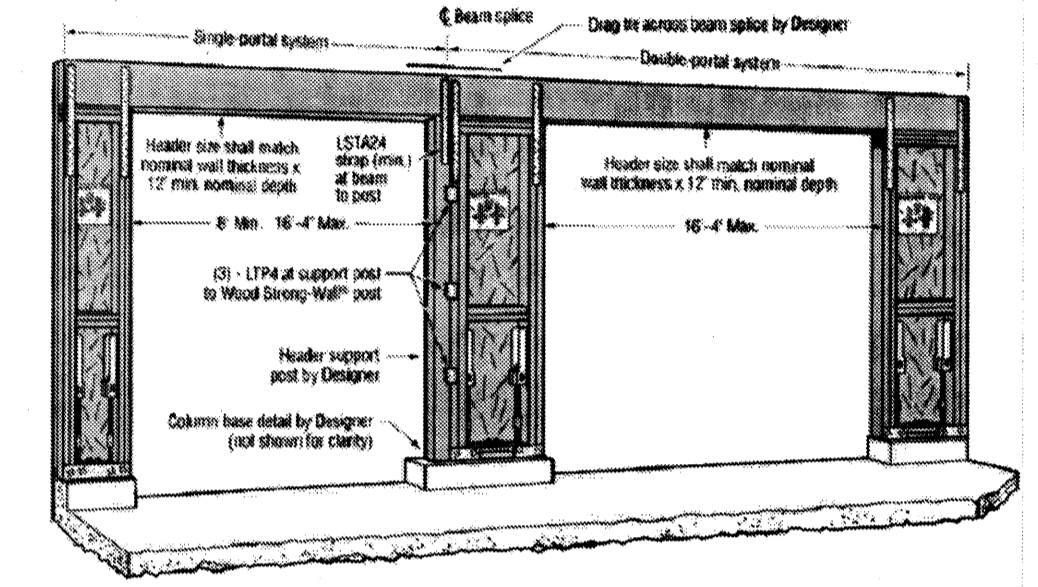
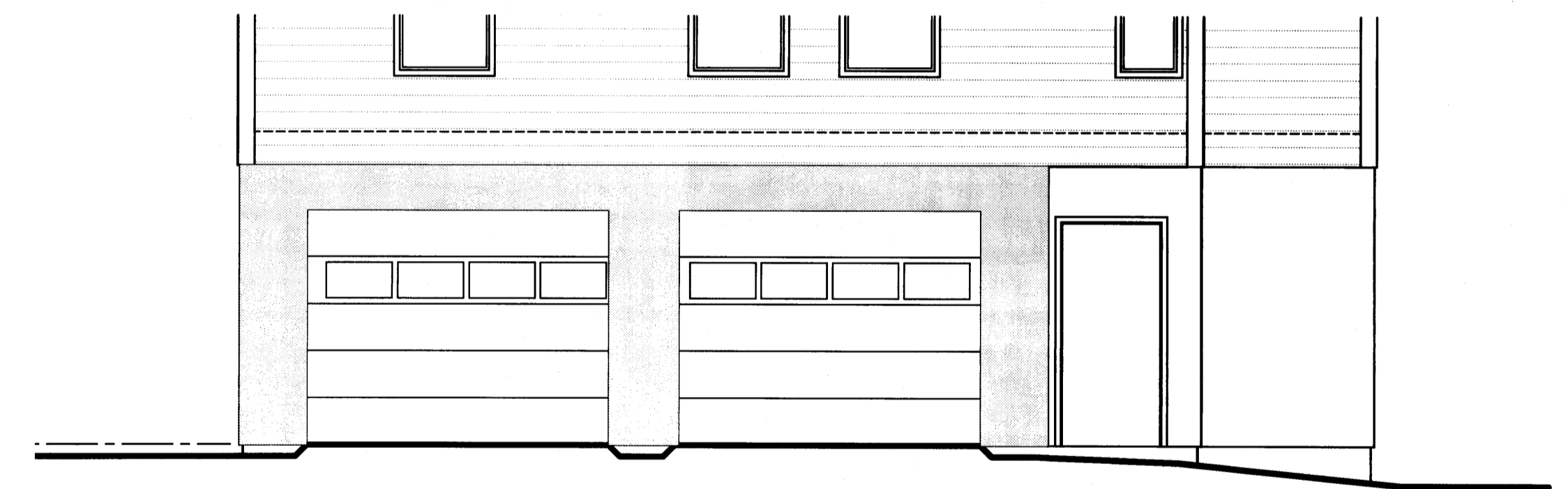


'STRONG' WALL DETAIL (ENLARGED)
NTB

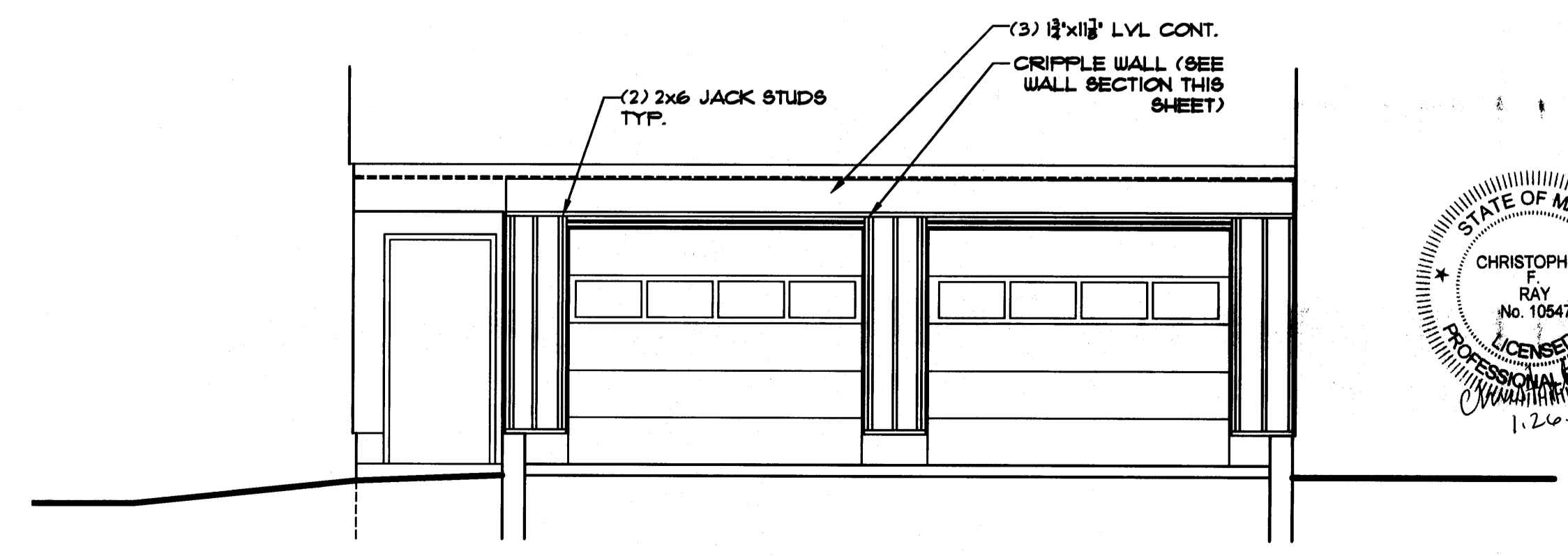


1. Design to support load and support and to foundation with connectors may be required where justified by calculations.
2. This detail reflects lateral load requirements of a Single- and Double-portal system. It is the Designer's responsibility to provide a complete load path for all loads in accordance with the governing codes.
3. System rating equals the sum of the Single- and Double-portal values.
4. Adequate insulation: A single-glass header (or camera) may be substituted for the two headers shown. The design rating for this condition may then be calculated as the sum of the individual single-wall ratings.
5. Longer header spans can be accommodated if longer headers are used such that equivalent stiffness is equal to or greater than that provided by the minimum header and maximum length indicated.
6. Simpson Strong-Tie L224 and L2322 by Designer's minimum requirements to achieve the alternate detail.

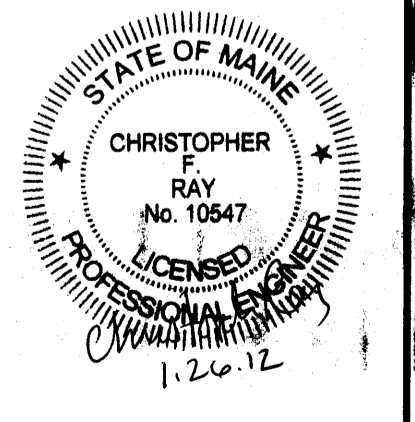
'STRONG' WALL DETAIL
NTB



'STRONG' WALL LOCATION EXTERIOR
SCALE: 1/4\"/>



'STRONG' WALL LOCATION INTERIOR
SCALE: 1/4\"/>



Rev.	Date	Issued for pricing	Issued for Permitting
A	08/18/11		10-13-11
B			
CODE:	TOWN:	DATE:	SCALE:
DESIGNED:	DRAWN:	WALL SECT	DETAILS
FILE:	SHEET:	A3.C	