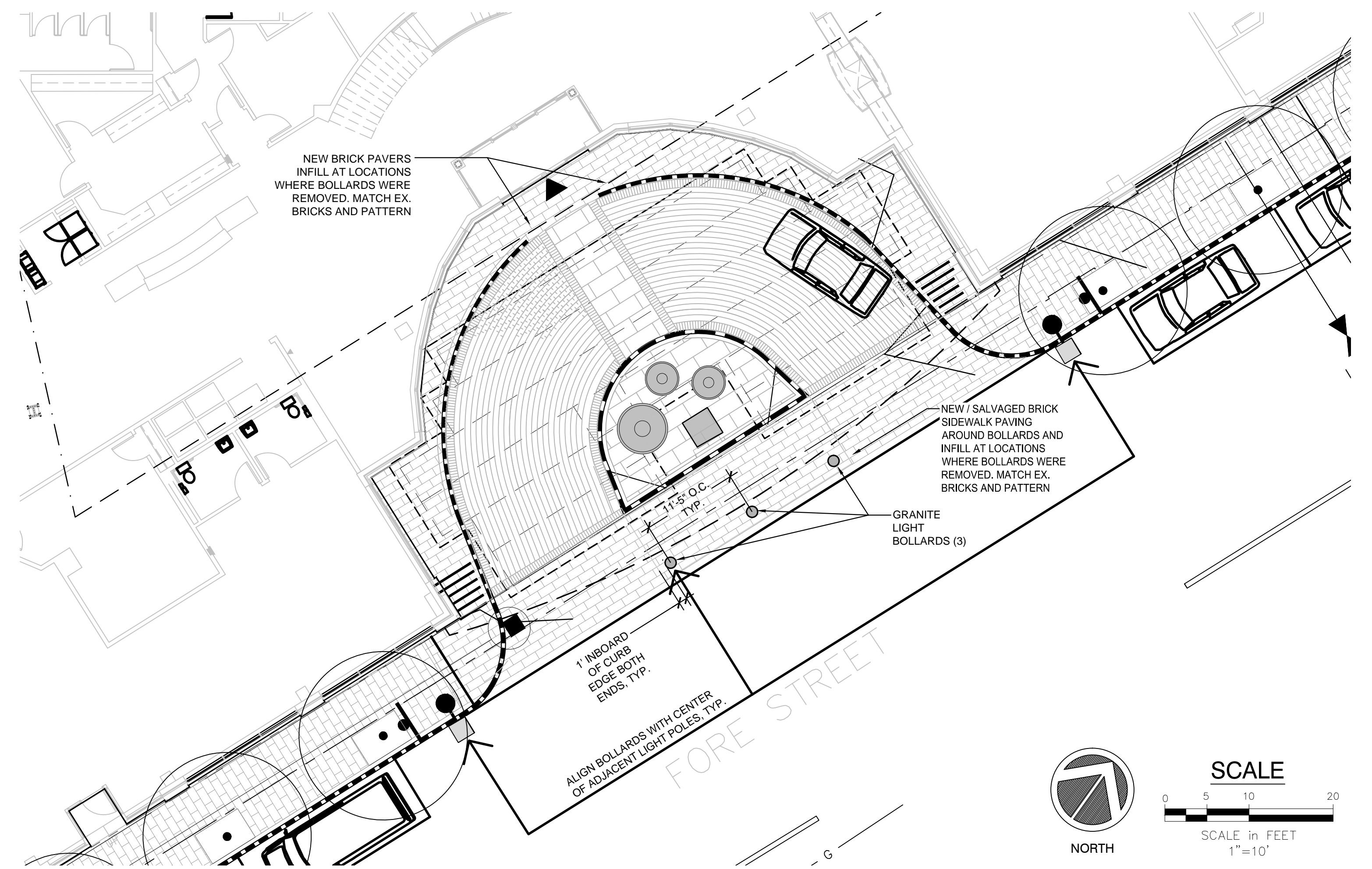
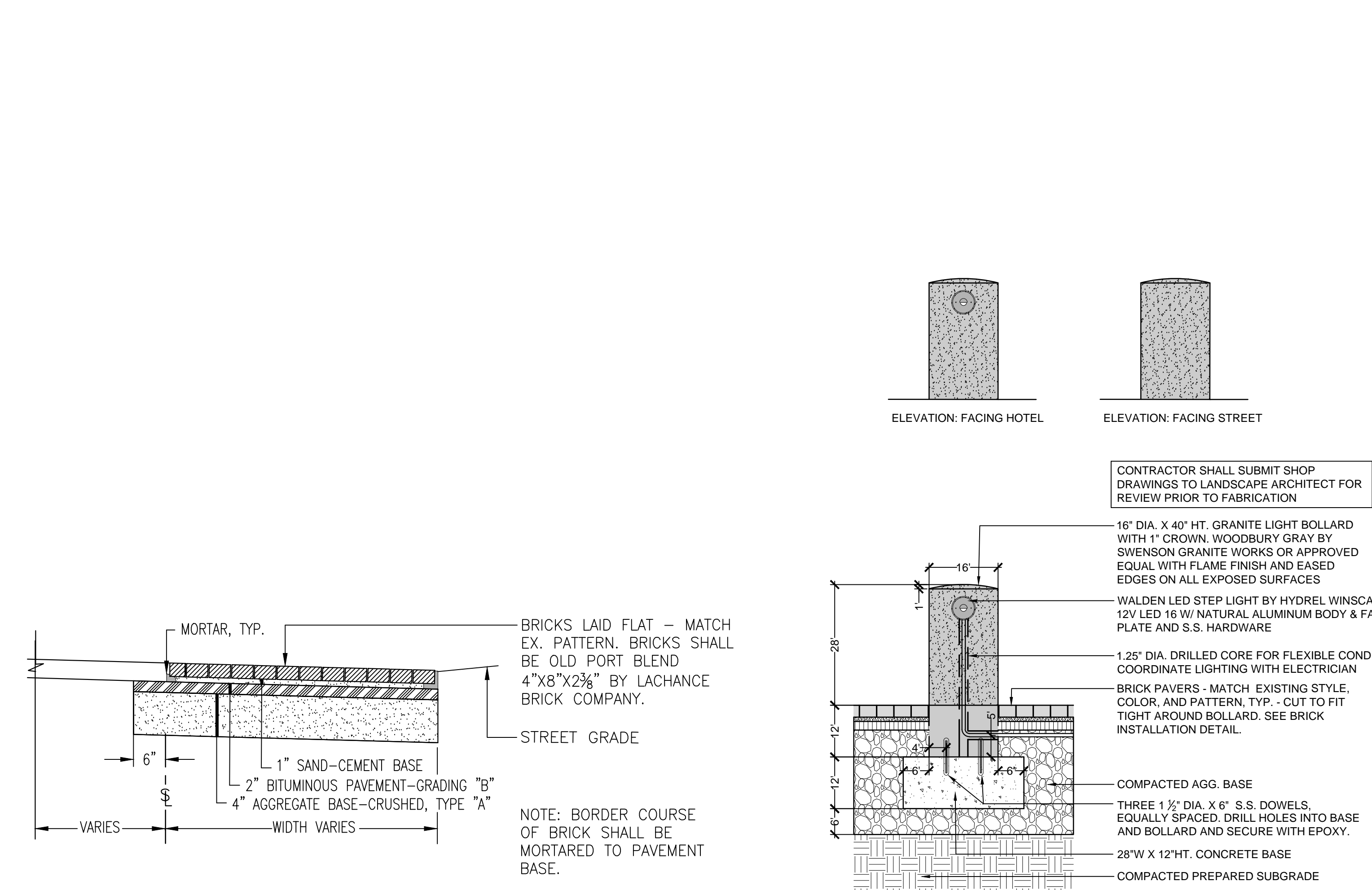


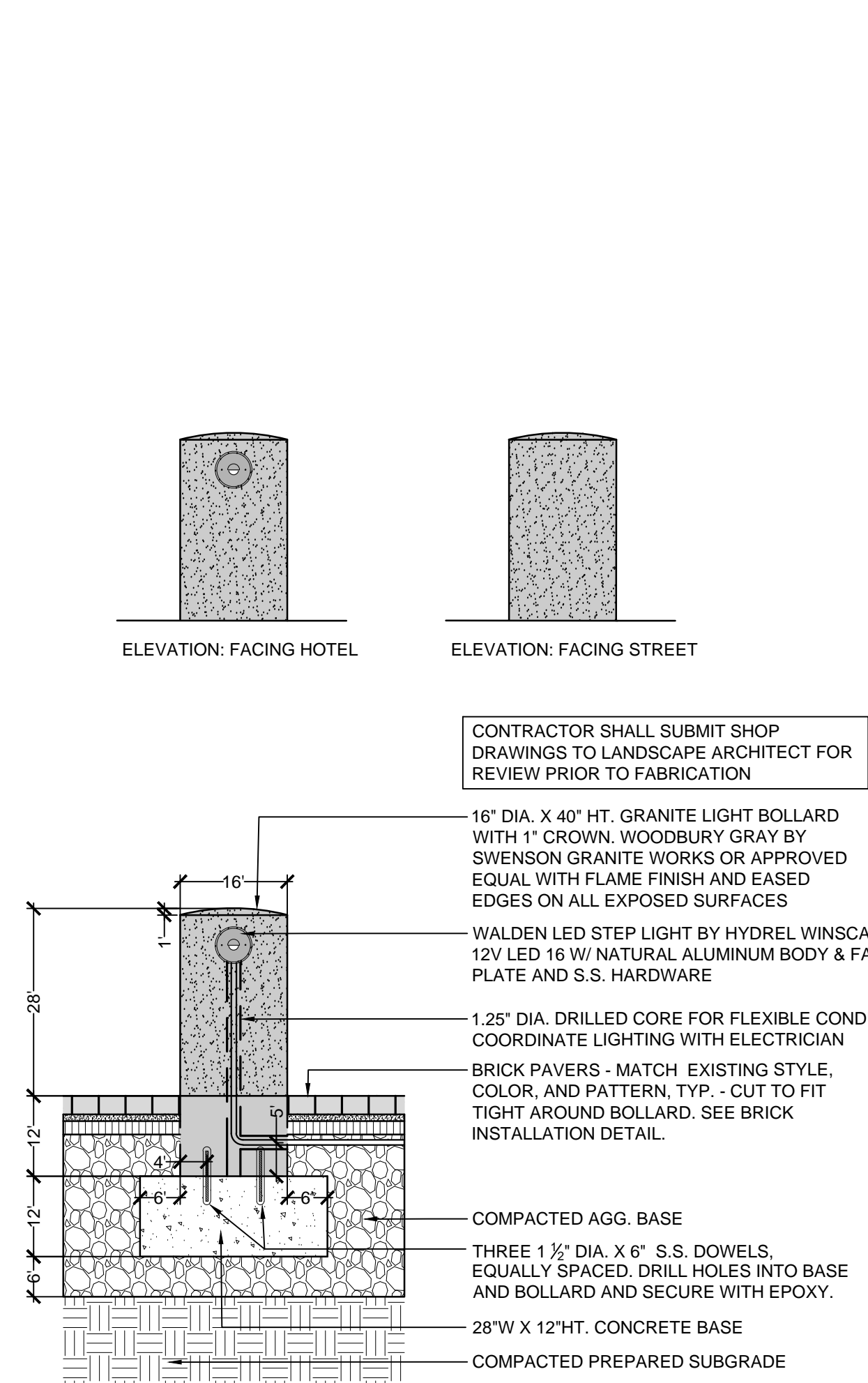
1 DEMO PLAN




2 SITE PLAN



3 BRICK SIDEWALK SCALE: NTS



4 GRANITE LIGHT BOLLARD SCALE: NTS



**WALDEN LED**  
12V LED16  
Step Light

LED

Specifications

D:	5" (127mm)
L:	5-1/4" (134mm)
Weight:	3 lbs (1.4kg)

Suitable For Wet Locations

CATALOG NUMBER

NOTES

TYPE

**DESCRIPTION**

The Walden series is a hooded step light designed for mounting in stairwells, retaining walls and other outdoor areas requiring a durable low level luminaire. Wet location, indoor/outdoor rated, machined from billet aluminum, with a cast brass faceplate, stainless steel hardware, optically clear heat strength borosilicate glass and powder coated with a super durable TGIC powder coat finish, this fixture is designed to withstand the test of time. Designed with a wide range input voltage (11Vac - 14Vac) giving a nearly constant light output to combat voltage drop, yet is dimmable using most standard low voltage magnetic dimmers. LED units and optics are replaceable. This fixture requires a remote 12Vac transformer, purchased separately.

**ORDERING INFORMATION** EXAMPLE: WALDEN 3LED16 30K 12 FA CSL10 BL

Series*	Source*	Color Temperature*	Voltage*	Options	Internal Filters	Cord Set Length*	Finish*
WALDEN	3LED16 LED Sup Round (6 watts)	30K 40K 50K AMB 591NM Amber	12'	FA Amber FG Green FGB Green Distalene FBP Purple FM Medium Blue FMB Medium Blue FR Red FRD Red Distalene	N/A	CSL, 5'-120" of cord available in 5' increments	BL Black Textured BRS Bronze Smooth BRT Bronze Textured BRZ Satin Bronze w/ Gloss CHS Chrome Smooth DBL Black Smooth DOB Dark Bronze DNA Natural Aluminum NAT Brushed Brass w/ Satin NBS Natural Bronze POL Polished Brass w/ Gloss VET Verde Textured WH White CF Custom Finish

\*Required Fields  
Notes:  
1 Remote transformer required.  
2 Consult factory

NOTE: Hydrel Reserves The Right To Modify Specification Without Notice. Any dimension on this sheet is to be assumed as a reference dimension. Used for information purposes only. It does not govern manufacturing or inspection requirements. (0425 114.5.1202)

HYDREL WINSCAPE®

9144 Deering Avenue, Second Floor • Chatsworth, CA 91311 • www.hydrel.com  
Phone: 866.533.9901 • Fax: 866.533.5291

©2015 Acuity Brands Lighting, Inc. Rev. 04/14/15 WALDEN\_LED

5 BOLLARD LIGHT SCALE: NTS

NO.	REVISION	DATE
SCALE: 1"=10'-0"		DRAWN BY: MAP
DATE: 07/25/2016		CHECKED BY: PC
<b>CARROLL ASSOCIATES</b> 200 COMMERCIAL ST. PORTLAND, ME 04101 TEL. 207.772.1552 FAX: 207.772.0712		
PROJECT		
<b>RESIDENCE INN BY MARRIOTT</b>  PORTLAND, ME  JOB #802		
TITLE		
<b>SITE PLAN AND DETAILS</b>		
GROUP ONE		
21 W. THIRD STREET, BOSTON, MA 02127		TEL. (617)268-7000 FAX: (617)268-0209
DRAWING NO.		L-1.0