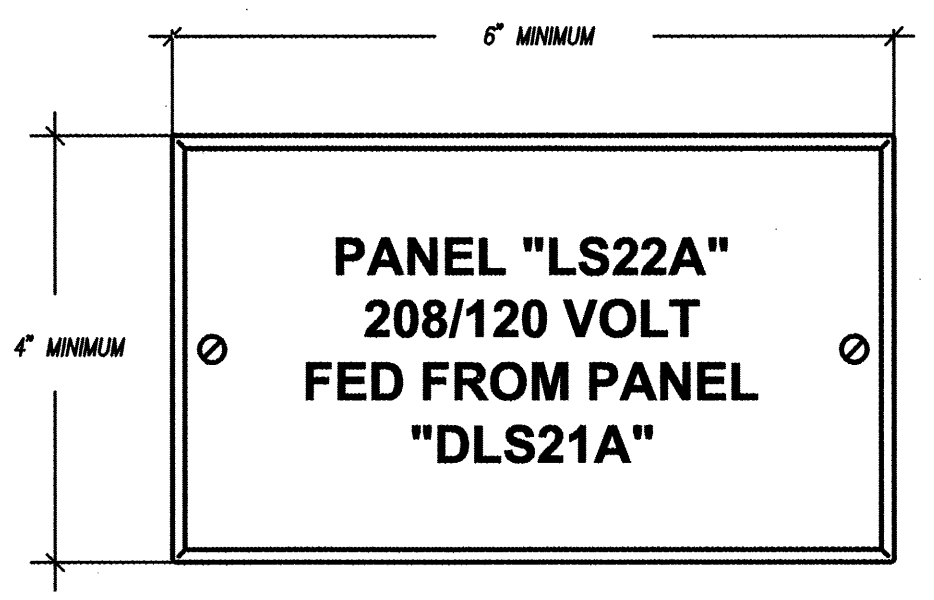


NOTES:
 1. AT A MINIMUM, ELECTRICAL CONTRACTOR SHALL PROVIDE TYPED LABELS WITH PTOUCH MACHINE TO INDICATE FIRE ALARM DEVICE AND ADDRESS OR ZONE NUMBER. COORDINATE EXACT NAMING WITH FACILITY'S PERSONNEL. IF FACILITY STANDARD IS ENGRAVED COVERPLATES, THE ELECTRICAL CONTRACTOR SHALL PROVIDE ENGRAVED COVERPLATES TO MATCH FACILITY REQUIREMENTS.

1/4" TYPICAL FIRE ALARM LABELING DETAIL N.T.S.



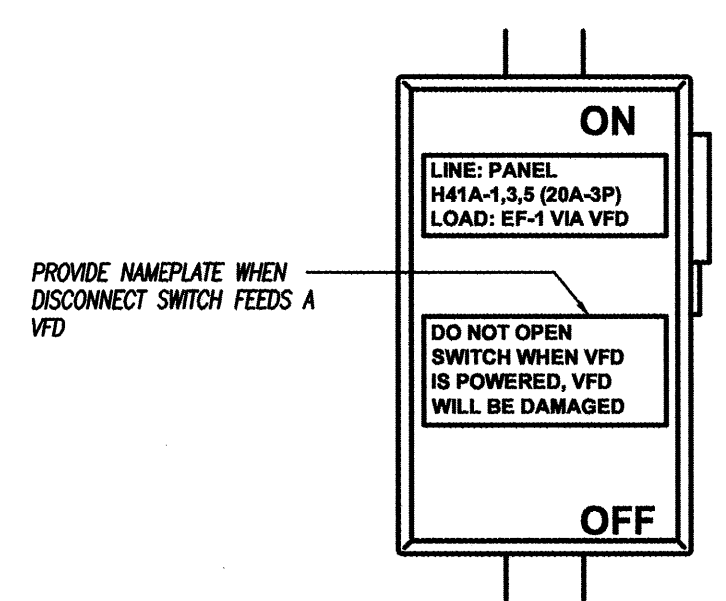
NOTES:
 1. NAMEPLATES SHALL HAVE WHITE LETTERS ON BLACK BACKGROUND.
 2. NAMEPLATES SHALL BE FASTENED BY MACHINE SCREWS. ADHESIVES WILL NOT BE ALLOWED.
 3. NAMEPLATES SHALL BE PROVIDED FOR ALL ELECTRICAL EQUIPMENT INCLUDING, BUT NOT LIMITED TO, PANELBOARDS, SWITCHBOARDS, MOTOR CONTROL CENTERS, STARTERS, JUNCTION BOXES, PULL BOXES, DISCONNECT SWITCHES, TRANSFORMERS, CABINETS, ETC.

1/4" TYPICAL NAMEPLATE DETAIL N.T.S.



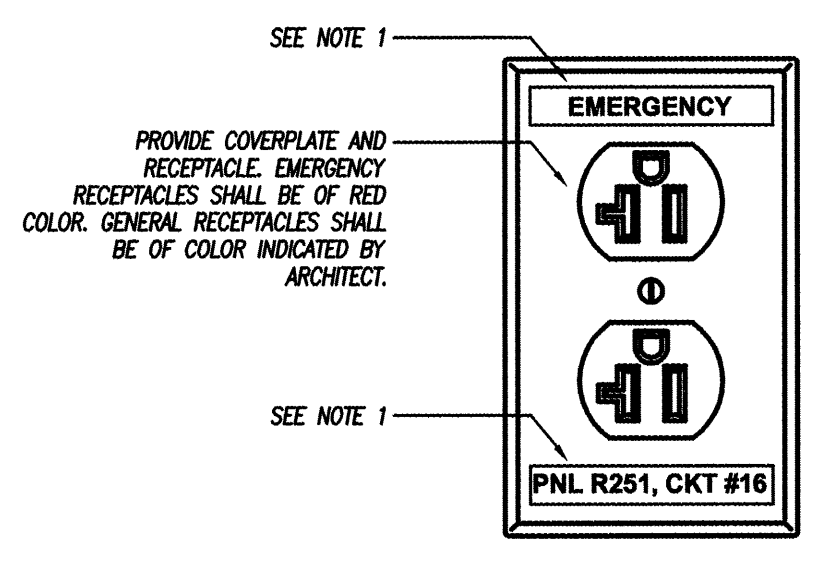
NOTES:
 1. SWITCHBOARDS, PANELBOARDS, INDUSTRIAL CONTROL PANELS, METER SOCKET ENCLOSURES, AND MOTOR CONTROL CENTERS IN OTHER THAN DWELLING OCCUPANCIES AND LIKELY TO REQUIRE EXAMINATION, ADJUSTMENT, SERVICING, OR OR MAINTENANCE WHILE ENERGIZED SHALL BE FIELD MARKED TO WARN QUALIFIED PERSONS OF POTENTIAL ELECTRIC ARC FLASH HAZARDS. PROVIDE LABEL ON ALL ELECTRICAL EQUIPMENT AS REQUIRED.
 2. THE MARKING SHALL BE LOCATED SO AS TO BE CLEARLY VISIBLE TO QUALIFIED PERSONS BEFORE EXAMINATION, ADJUSTMENT, SERVICING, OR MAINTENANCE OF THE EQUIPMENT.

1/4" ARC FLASH HAZARD MARKING DETAIL N.T.S.



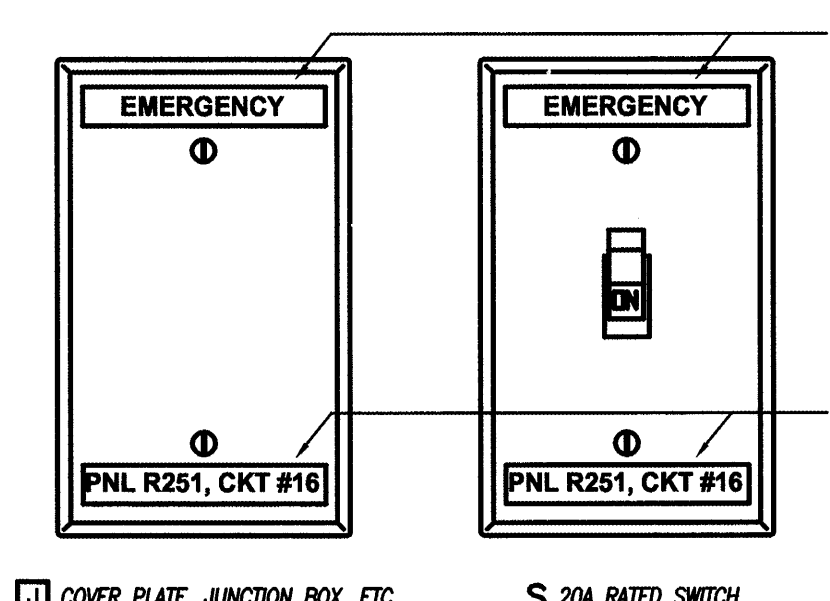
NOTES:
 1. AT A MINIMUM, ELECTRICAL CONTRACTOR SHALL PROVIDE TYPED LABELS WITH PTOUCH MACHINE TO INDICATE PANEL NAME AND CIRCUIT NUMBER. COORDINATE EXACT NAMING WITH FACILITY'S PERSONNEL. IF FACILITY STANDARD IS ENGRAVED COVERPLATES, THE ELECTRICAL CONTRACTOR SHALL PROVIDE ENGRAVED COVERPLATES TO MATCH FACILITY REQUIREMENTS.

1/4" TYPICAL DISCONNECT SWITCH LABELING DETAIL N.T.S.



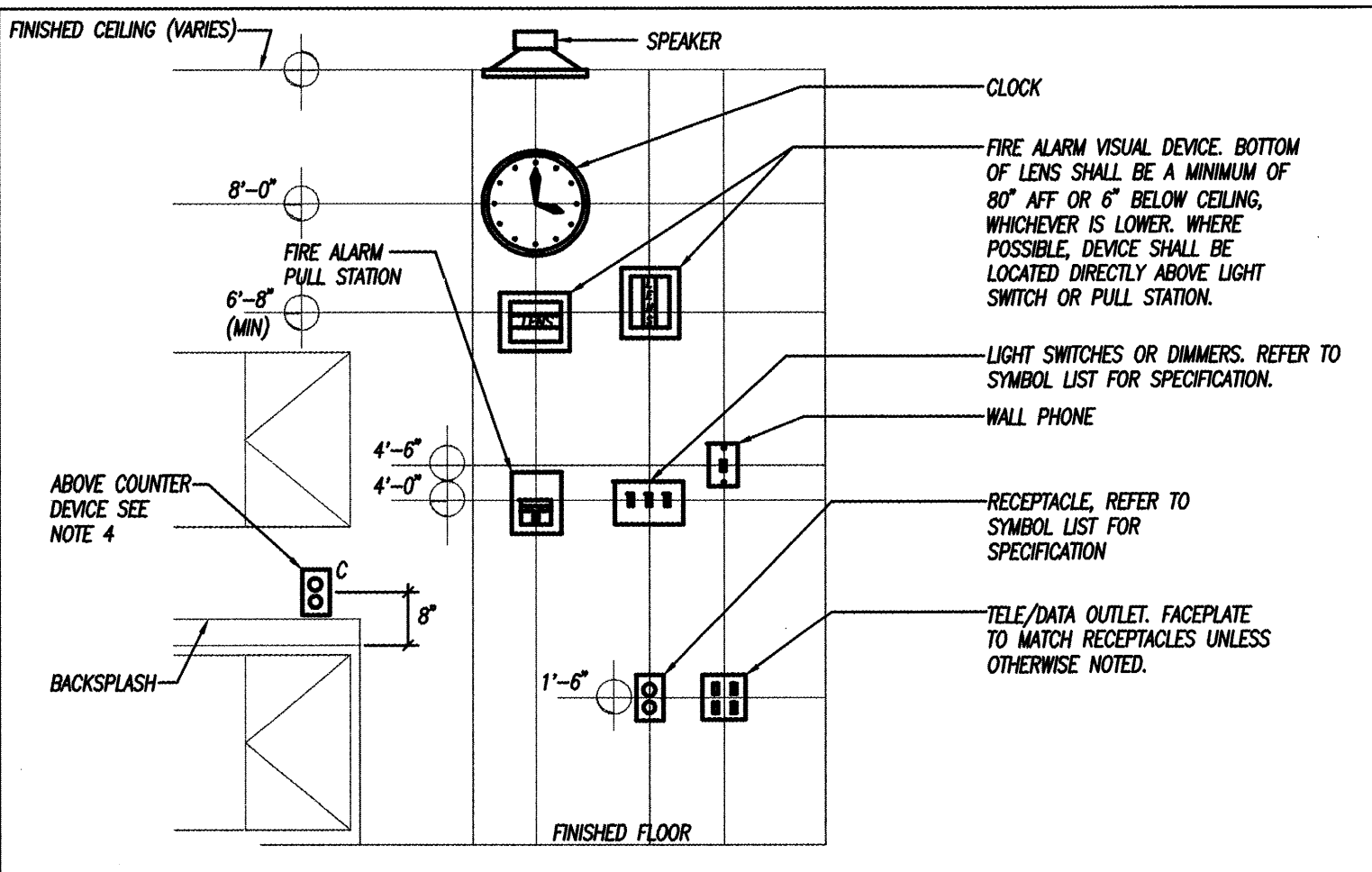
NOTES:
 1. AT A MINIMUM, ELECTRICAL CONTRACTOR SHALL PROVIDE TYPED LABELS WITH PTOUCH MACHINE TO INDICATE PANEL NAME AND CIRCUIT NUMBER. PROVIDE 'EMERGENCY' TYPED LABEL FOR CIRCUITS CONNECTED TO EMERGENCY PANELS. COORDINATE EXACT NAMING WITH FACILITY'S PERSONNEL. IF FACILITY STANDARD IS ENGRAVED COVERPLATES, THE ELECTRICAL CONTRACTOR SHALL PROVIDE ENGRAVED COVERPLATES TO MATCH FACILITY REQUIREMENTS.

1/4" TYPICAL RECEPTACLE LABELING DETAIL N.T.S.



NOTES:
 1. AT A MINIMUM, ELECTRICAL CONTRACTOR SHALL PROVIDE TYPED LABELS WITH PTOUCH MACHINE TO INDICATE PANEL NAME AND CIRCUIT NUMBER. PROVIDE 'EMERGENCY' TYPED LABEL FOR CIRCUITS CONNECTED TO EMERGENCY PANELS. COORDINATE EXACT NAMING WITH FACILITY'S PERSONNEL. IF FACILITY STANDARD IS ENGRAVED COVERPLATES, THE ELECTRICAL CONTRACTOR SHALL PROVIDE ENGRAVED COVERPLATES TO MATCH FACILITY REQUIREMENTS.

1/4" TYPICAL COVERPLATE AND SWITCH DETAIL N.T.S.



NOTES:
 1. ALL MOUNTING HEIGHTS SHALL BE MEASURED FROM FINISHED FLOOR TO CENTERLINE OF DEVICE EXCEPT EXIT SIGNS AND FIRE-ALARM VISUAL DEVICES.
 2. DEVICES SHALL BE INSTALLED ON A COMMON VERTICAL CENTERLINE WHEREVER POSSIBLE.
 3. ALL DEVICES SHALL BE INSTALLED AT MOUNTING HEIGHTS AS INDICATED ON THIS DETAIL UNLESS OTHERWISE NOTED.
 4. MOUNT DEVICE 8" ABOVE COUNTER TOP. COORDINATE HEIGHT OF BACK SPLASH WITH THE ARCHITECT.

1/4" TYPICAL MOUNTING HEIGHTS DETAIL N.T.S.

PERMIT ISSUE - 09/27/07

NO.	REVISION	DATE
SCALE: NONE		DRAWN BY: GCH
DATE: 09/27/07		CHECKED BY: DAH

STATE OF MAINE
 MICHAEL DAVID TRICKETT No. 9760
 RWS
 R. W. Sullivan Engineering
 HVAC, Electrical, Plumbing, Fire Protection, Code
 The Small Center
 529 Main Street, Suite 203
 Boston, Massachusetts 02129-1107
 Phone: (617) 524-8227
 Fax: (617) 524-8016
 www.rwsusa.com
 RWS Job No. 2273.00

PROJECT
RESIDENCE INN BY MARRIOTT

PORTLAND, ME
 JOB# 802

TITLE
ELECTRICAL DETAILS

GROUP ONE
 21 W. THIRD STREET, BOSTON, MA 02127
 TEL: (617)268-7000 FAX: (617)268-0209

DRAWING NO.
E6.03