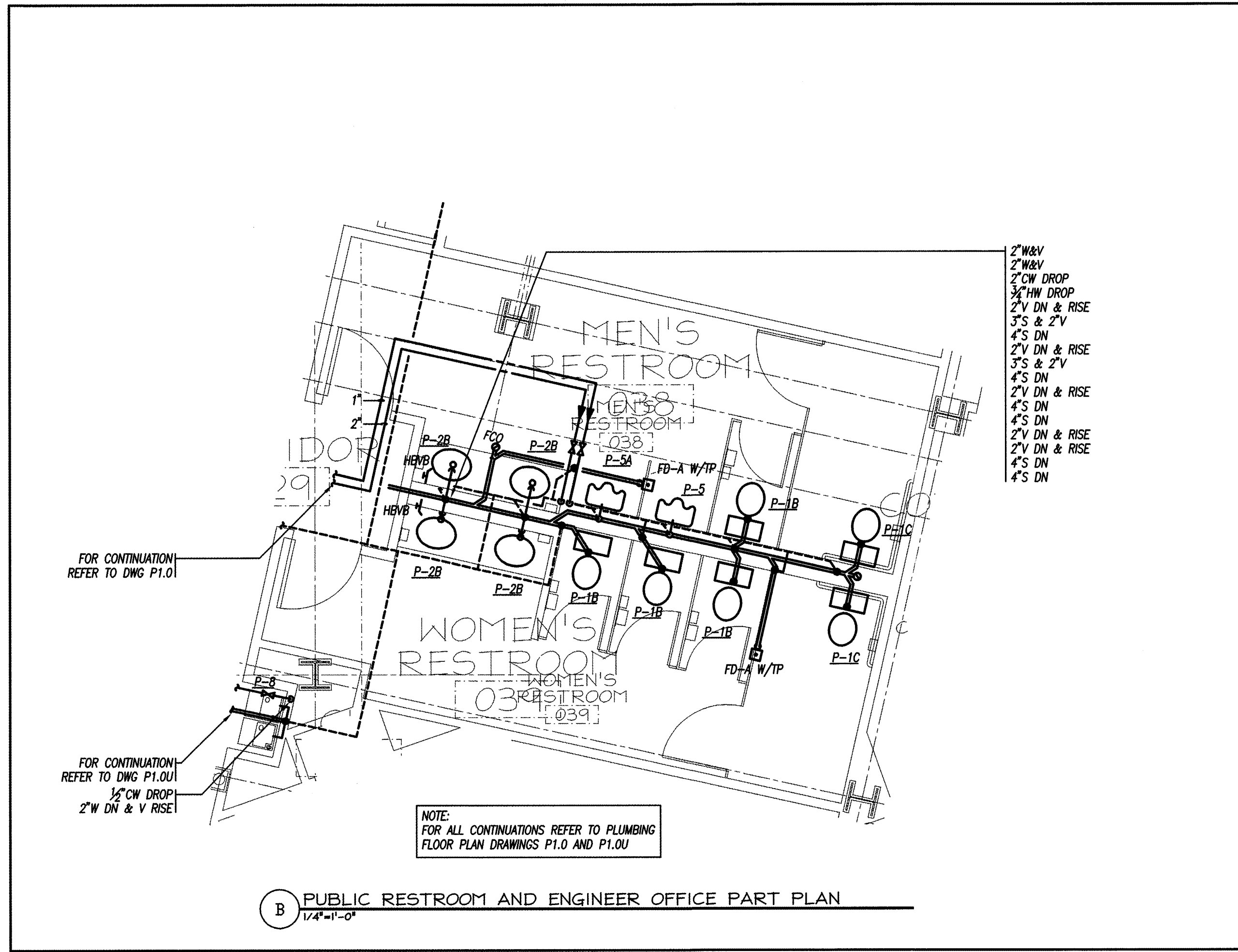
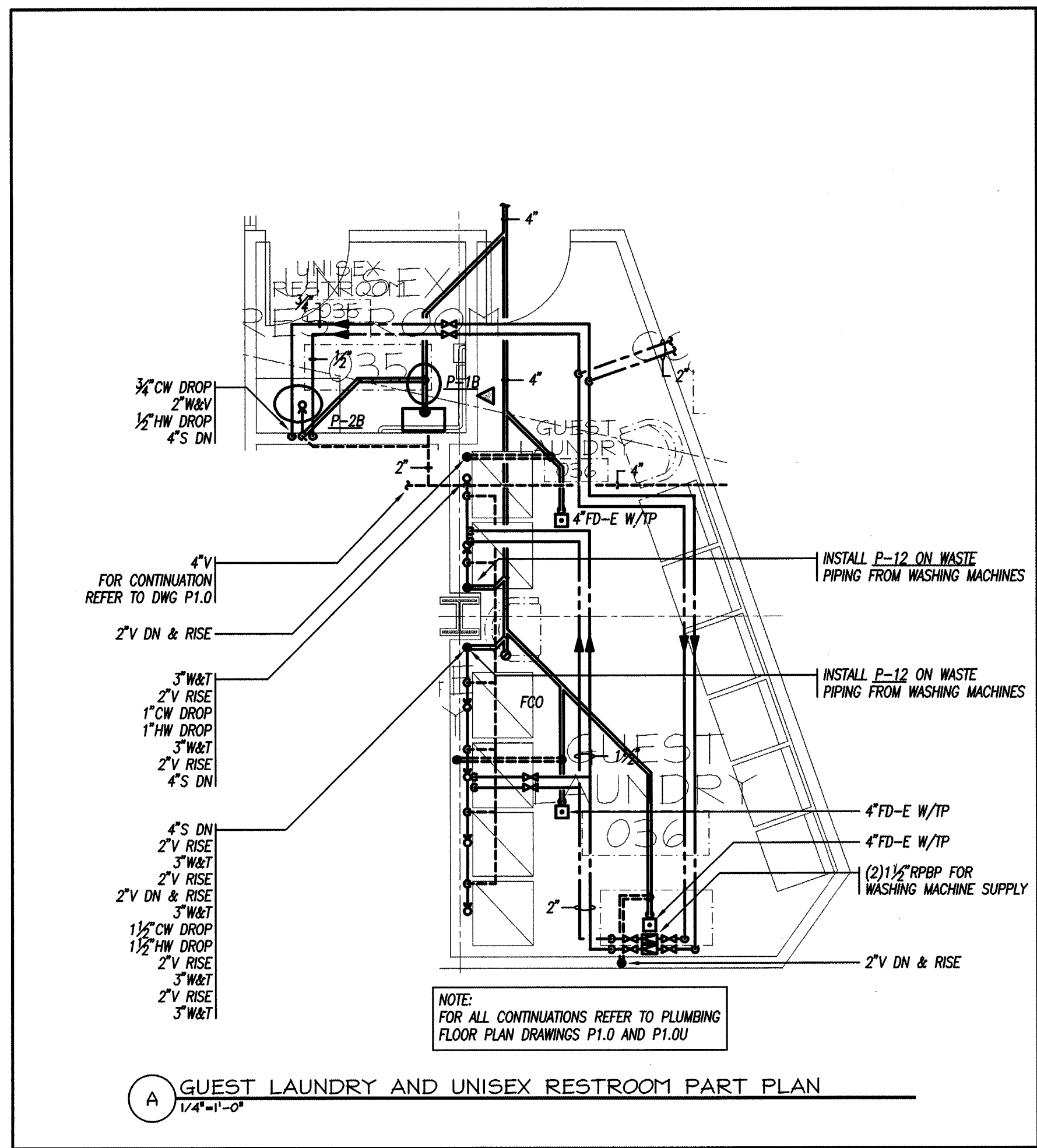
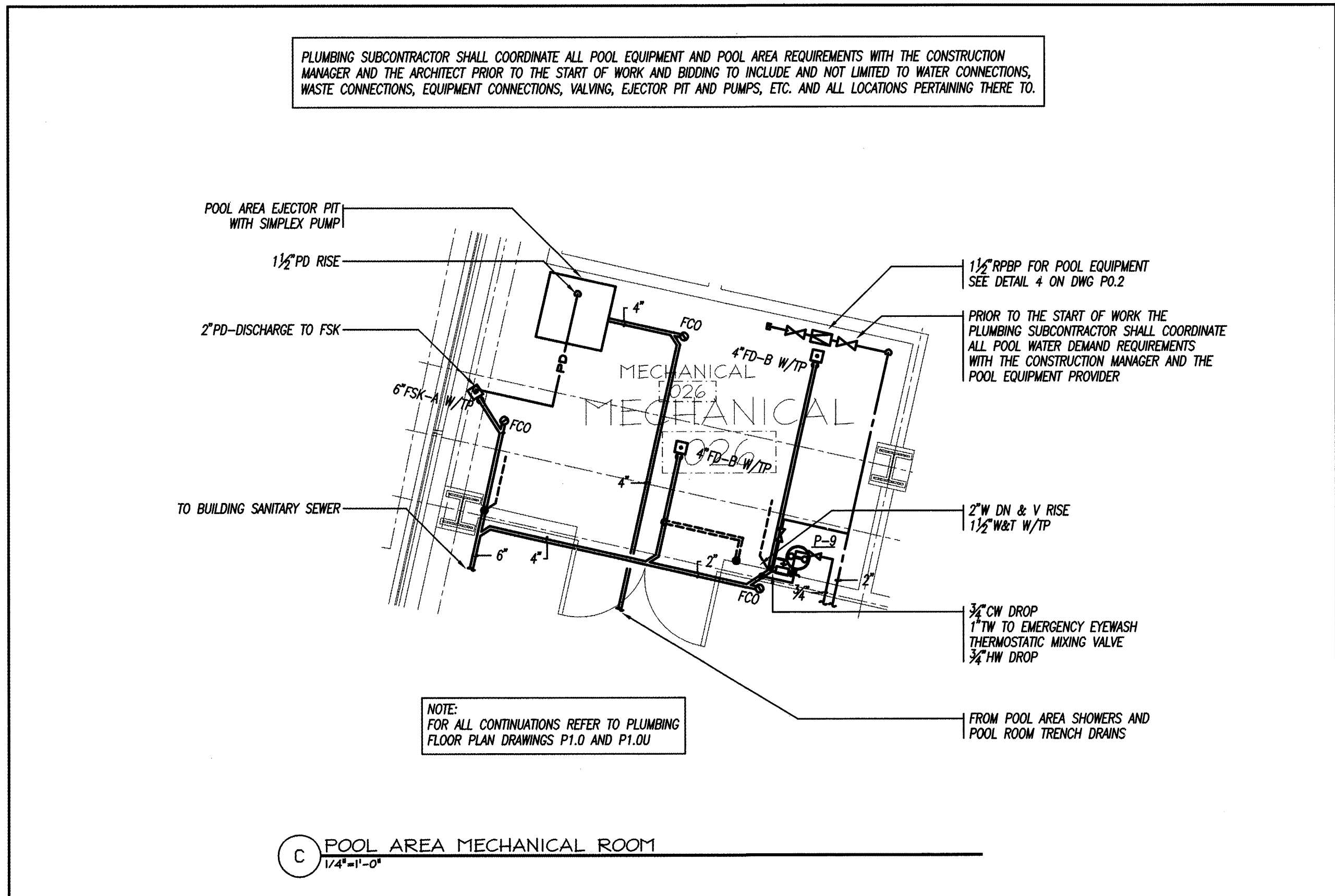
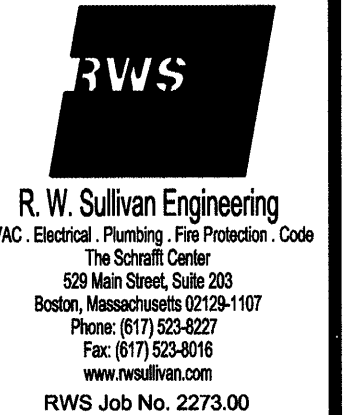
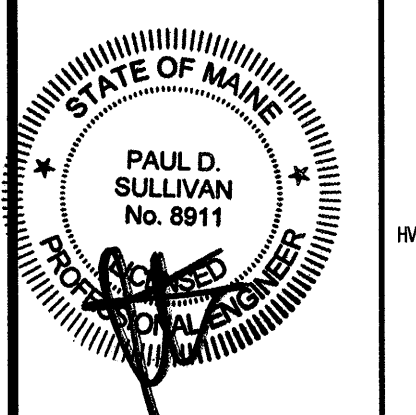


J:\2007_1620_006_006_2273-00_1620_006_006.dwg, 9/27/07 1:28:11 PM, RJS



PERMIT ISSUE - 09/27/07

NO.	REVISION	DATE
SCALE: AS NOTED		DRAWN BY: EMG
DATE: 09/27/07		CHECKED BY: RJM



PROJECT
RESIDENCE INN BY MARRIOTT
PORTLAND, ME
JOB# 802

TITLE
PLUMBING PART PLANS

GROUP ONE
21 W. THIRD STREET, BOSTON, MA 02127
TEL: (617)268-7000 FAX: (617)268-0209

DRAWING NO.
P0.4