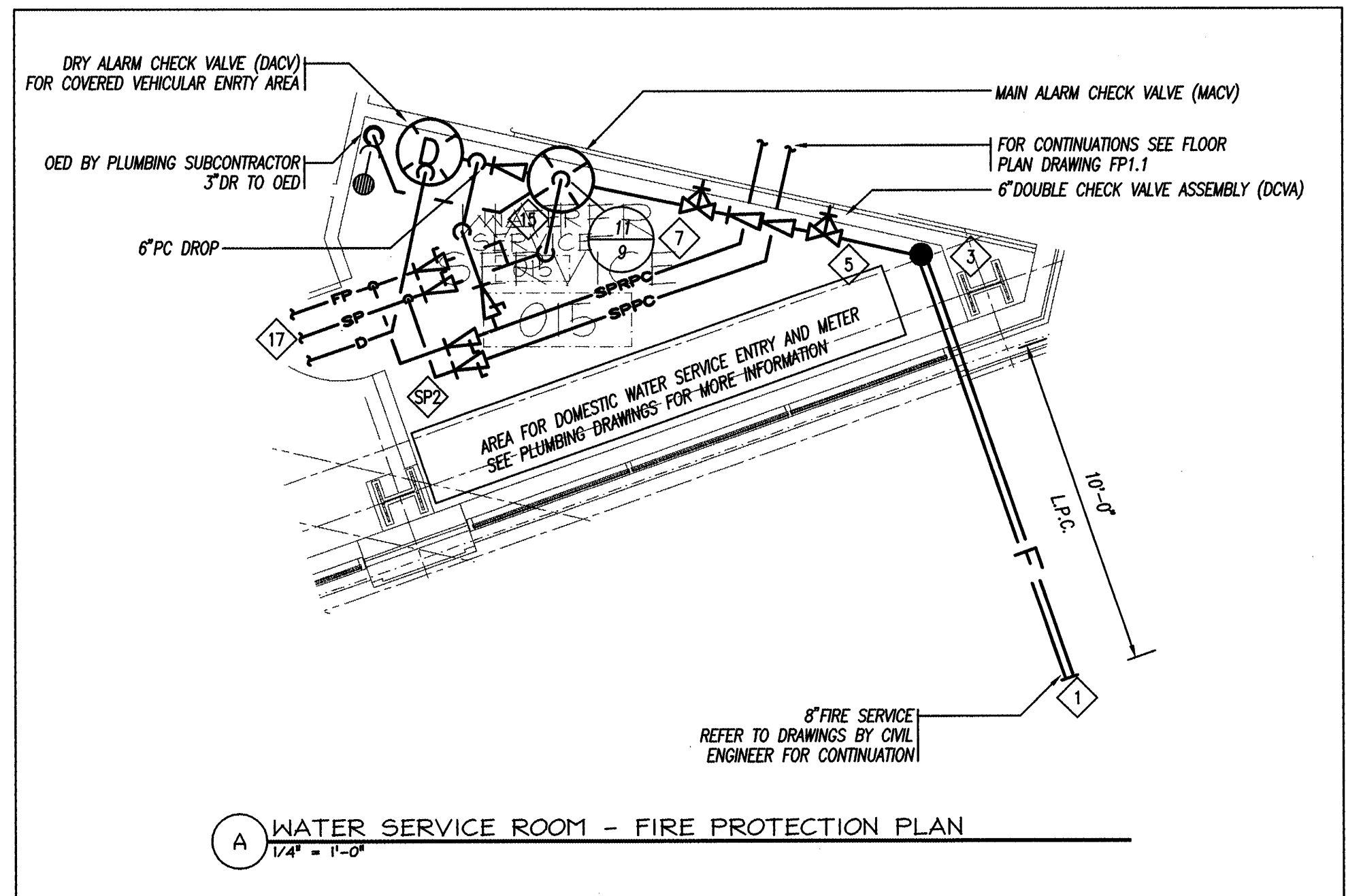


3 FIRE DEPARTMENT VALVE IN CABINET [FDVC] NOT TO SCALE



A WATER SERVICE ROOM - FIRE PROTECTION PLAN 1/4" = 1'-0"

FIRE PROTECTION LEGEND

SYMBOL	ABBR	DESCRIPTION
— SPR —	SPR	SPRINKLER PIPING
— DR —	DR	DRAIN PIPING
— FP —	FP	FIRE PROTECTION PIPING
— F —	F	FIRE MAIN PIPING
— SP —	SP	STAND PIPE PIPING
— SPRPC —	SPRPC	SPRINKLER SYSTEM PUMPER CONNECTION PIPING
— SPPC —	SPPC	STANDPIPE PUMPER CONNECTION PIPING
— CV —	CV	CHECK VALVE WITH BALL DRIP
— DCVA —	DCVA	DOUBLE CHECK VALVE ASSEMBLY
— PIPING BELOW FLOOR —		PIPING LOCATED BELOW FLOOR SHOWN
— PIPE CAP —		PIPE CAP
— PIPE CONTINUATION —		PIPE CONTINUATION
— PIPE UP THRU SLAB —		PIPE UP THRU SLAB OF FLOOR ABOVE
— PIPE DOWN THRU FLOOR —		PIPE DOWN THRU FLOOR SHOWN
— PIPE DROP —		PIPE DROP
— PIPE RISE —		PIPE RISE
○		QUICK RESPONSE UPRIGHT SPRINKLER HEAD
●		RESIDENTIAL QUICK RESPONSE SPRINKLER HEAD
○		NON-RESIDENTIAL QUICK RESPONSE SPRINKLER HEAD
◀		QUICK RESPONSE DRY SIDEWALL SPRINKLER HEAD
◀		RESIDENTIAL HORIZONTAL SIDEWALL SPRINKLER HEAD
◀		NON-RESIDENTIAL QUICK RESPONSE HORIZONTAL SIDEWALL SPRINKLER HEAD
— FDV —	FDV	FIRE DEPARTMENT VALVE
— FCVS —	FCVS	SPRINKLER FLOOR CONTROL VALVE STATION
— MACV —	MACV	MAIN ALARM CHECK VALVE
— N.P. —		NODE POINT USED FOR HYDRAULIC REFERENCE
— FDC —	FDC	FIRE DEPARTMENT CONNECTION
— DRAIN VALVE —		DRAIN VALVE
— BALL VALVE —		BALL VALVE
— OS&Y —	OS&Y	OUTSIDE SCREW AND YOKE
— CHECK VALVE —		CHECK VALVE
— LFPC —	LFPC	LIMIT OF FIRE PROTECTION CONTRACT
— FPR —	FPR	FIRE PROTECTION RISER

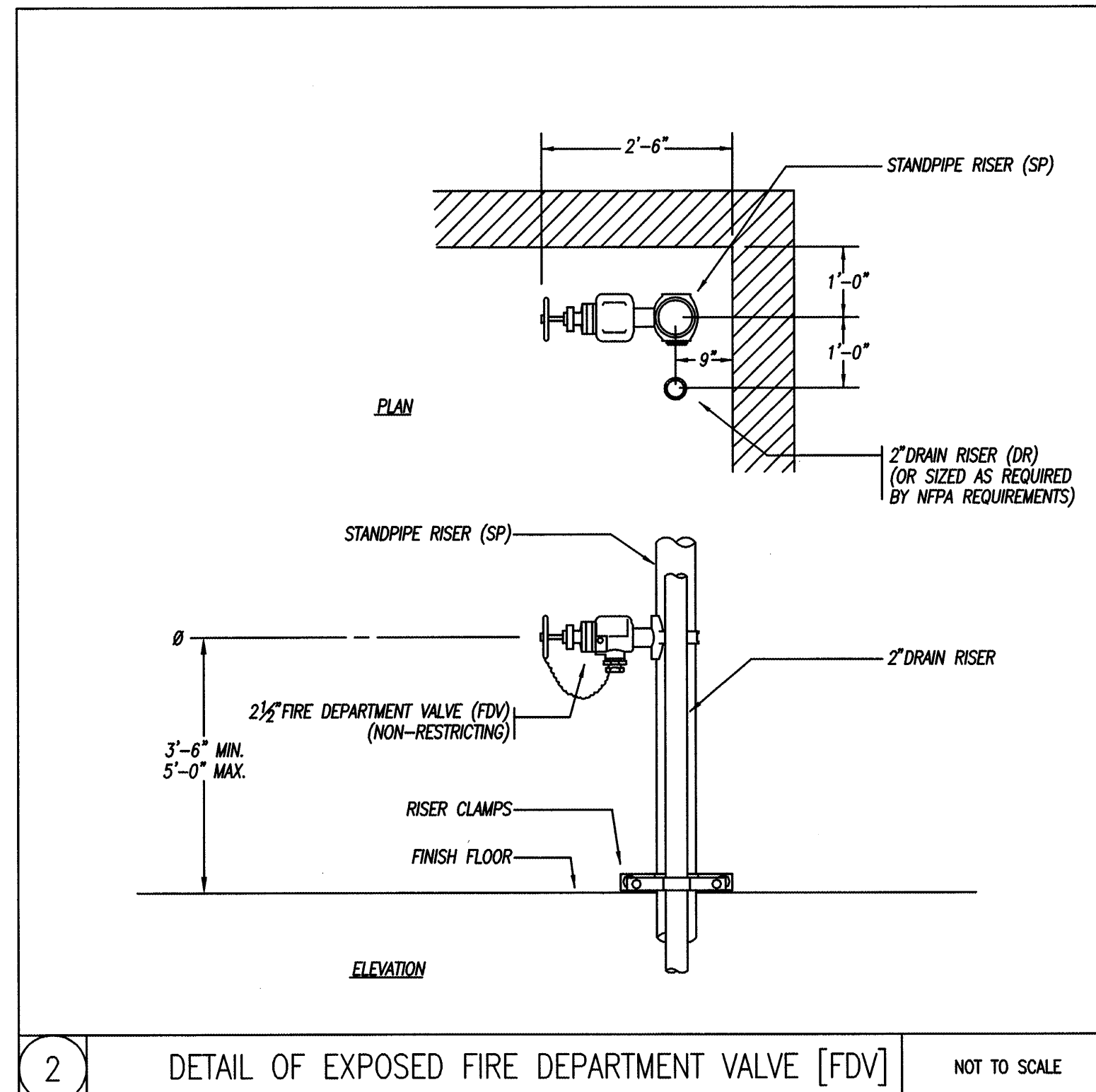
FIRE PROTECTION GENERAL NOTES

1. THE FIRE PROTECTION SUBCONTRACTOR SHALL REFER TO THE MARRIOTT FIRE PROTECTION SPECIFICATIONS.
2. ALL WORK TO OCCUR AT OWNER'S CONVENIENCE. NOTIFY OWNER WELL IN ADVANCE OF BEGINNING ANY PHASE OF WORK.
3. CONTRACTOR SHALL COORDINATE ALL NEW FIRE PROTECTION SYSTEM ALARM ZONES WITH ELECTRICAL ENGINEER.
4. SEPARATE STANDPIPE AND FIRE PROTECTION RISERS AND SEPARATE PUMPER CONNECTIONS FOR EACH SHALL BE INSTALLED. PRIOR TO INSTALLATION LOCATIONS FOR ALL APPURTENANCES SHALL BE OBTAINED FROM THE LOCAL FIRE DEPARTMENT.
5. WHERE SPRINKLER HEADS ARE INSTALLED IN TILED CEILING, ALL HEADS SHALL BE LOCATED ON THE CENTER OF THE TILE.
6. THE LINEN CHUTE SHALL HAVE A DEDICATED CONTROL VALVE STATION AND SPRINKLER HEADS SHALL PROTECT CHUTE WITH A SPRINKLER HEAD AT THE TOP, ONE ON EVERY OTHER FLOOR DOWN FROM THE TOP AND ONE HEAD AT THE BOTTOM.
7. THE POOL AREA SHALL BE FULLY SPRINKLERED WITH A WET SPRINKLER SYSTEM OF GALVANIZED PIPING AND STAINLESS STEEL SPRINKLER HEADS TO RESIST CORROSION. THE POOL AREA SHALL BE VALVED BY A DEDICATED CONTROL VALVE STATION.
8. ALL SPRINKLER HEAD TEMPERATURE RATINGS SHALL BE COORDINATED BY THE FIRE PROTECTION SUBCONTRACTOR AND THE INTENDED USE OF EACH ROOM/AREA IN WHICH THE SPRINKLER HEAD(S) ARE LOCATED.
9. FOR GUEST ROOM SPRINKLER LAYOUTS REFER TO TYPICAL GUEST ROOM PLANS FP1.20 TO FP1.22.
10. THE FIRE PROTECTION SUBCONTRACTOR SHALL REFER TO ALL ARCHITECTURAL DRAWINGS FOR COMPLETE COORDINATION OF SPRINKLER SYSTEM WITH ALL WALLS, SOFFITS, CEILING TYPES AND CEILING HEIGHTS.
11. THE FIRE PROTECTION SUBCONTRACTOR SHALL DETERMINE FOR THEMSELVES THE EXACT AND MOST HYDRAULICALLY MOST REMOTE AREA OF EACH FLOOR IN WHICH TO LOCATE INSPECTOR'S TEST STATION AND REQUIRED DRAIN TO GRADE.

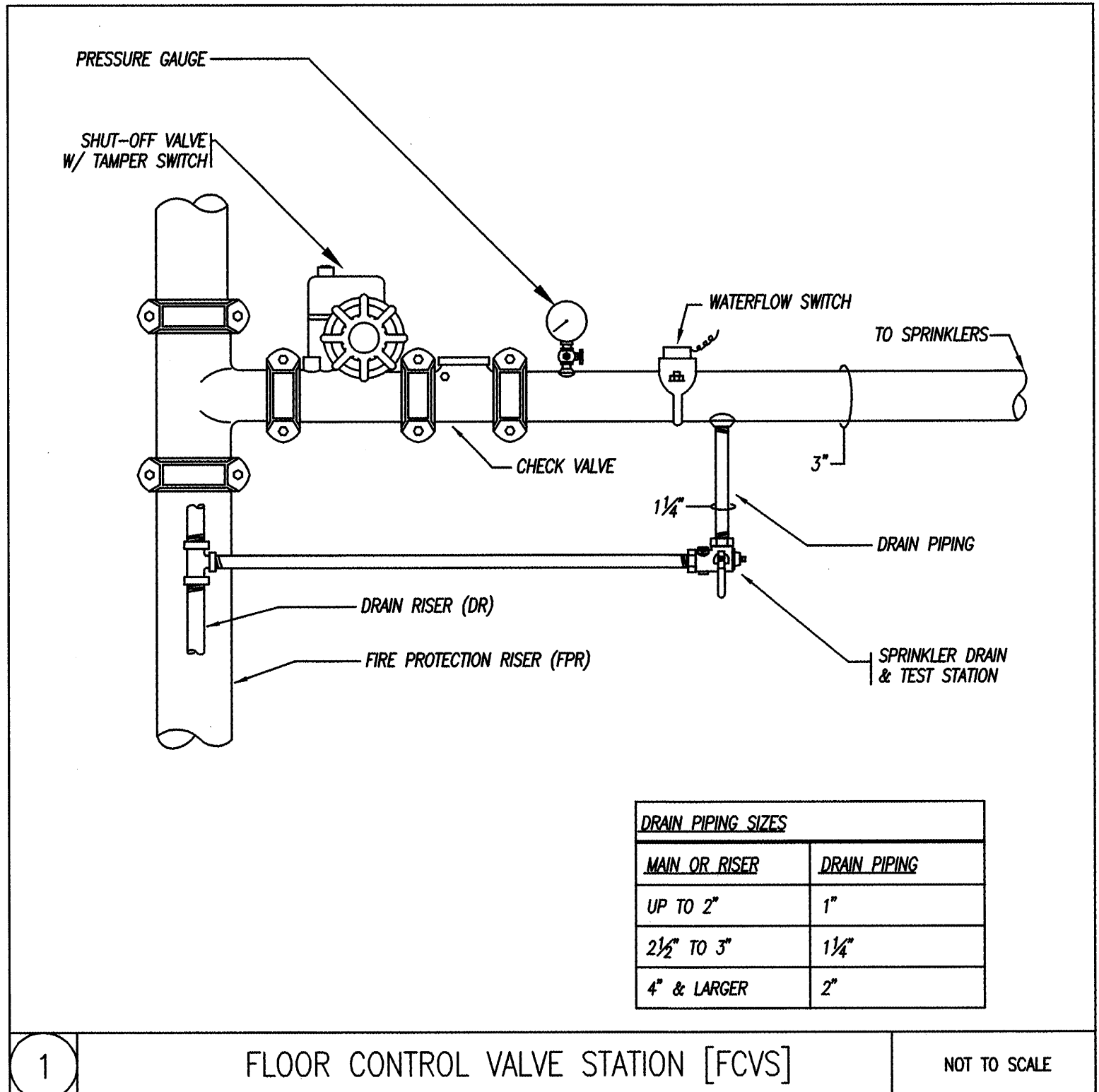
PROVIDE WET AUTOMATIC SPRINKLER SYSTEM OVER ENTIRE FLOOR EXCEPT NONCOMBUSTIBLE, NONACCESSIBLE VERTICAL SHAFTS USED FOR PIPING, DUCTS, AND/OR ELECTRICAL EQUIPMENT. SYSTEM SHALL BE BASED ON NFPA COVERAGE REQUIREMENTS ACCORDING TO THE FOLLOWING GENERAL GUIDELINES:

LOCATION	DENSITY AND AREA
1. HOTEL DWELLING UNITS	.10 GPM/FT ² OVER 5 HEADS + 100 GPM HOSE ALLOWANCE
2. MECHANICAL ROOMS AND STORAGE SPACES	.13 GPM/FT ² OVER 2500 FT ² + 250 GPM HOSE ALLOWANCE
3. KITCHENS/COOKING AREAS	.15 GPM/FT ² OVER 1500 FT ² + 250 GPM HOSE ALLOWANCE
4. LOBBIES, LOUNGES, ALL OTHER PUBLIC AREAS	.10 GPM/FT ² OVER 1500 FT ² + 100 GPM HOSE ALLOWANCE

IN AREAS WHERE SEVERAL DIFFERENT OCCUPANCIES EXIST, THE SPRINKLER SYSTEMS SHALL BE DESIGNED TO MEET THE MOST HYDRAULICALLY DEMANDING DENSITY AND AREA REQUIREMENTS.



2 DETAIL OF EXPOSED FIRE DEPARTMENT VALVE [FDV] NOT TO SCALE



1 FLOOR CONTROL VALVE STATION [FCVS] NOT TO SCALE

MAIN OR RISER	DRAIN PIPING
UP TO 2"	1"
2 1/2" TO 3"	1 1/4"
4" & LARGER	2"

SYMBOL	DESCRIPTION	MANUFACTURER	MODEL	DESCRIPTION/COMMENTS
△	RESIDENTIAL SIDEWALL	TYCO	SERIES LFI MODEL P/N 51-524-4-155	WHITE COATED, QUICK RESPONSE, STANDARD COVERAGE, 5.6K FACTOR, 155F RATED WITH RECESSED ESCUTCHEON MODEL 56-705-4-010
▲	VERTICAL SIDEWALL	TYCO	SERIES TY-FRB MODEL TY-3431	CHROME PLATED, QUICK RESPONSE, STANDARD COVERAGE, 5.6K FACTOR, 175F RATED (FOR SKYLIGHT SPRINKLER USE)
△	DRY SIDEWALL	TYCO	SERIES DS-1 MODEL P/N 60-342-9	CHROME PLATED, QUICK RESPONSE, STANDARD COVERAGE, 5.6K FACTOR, 175F RATED (FOR LINEN CHUTE), LENGTH TO BE DETERMINED BY FIRE PROTECTION SUBCONTRACTOR PRIOR TO ORDERING
●	RESIDENTIAL SEMI-RECESSED PENDANT	TYCO	SERIES LFI MODEL P/N 51-201-4-155	WHITE COATED, QUICK RESPONSE, STANDARD COVERAGE, 4.9K FACTOR, 155F RATED WITH WHITE COATED STYLE 20 RECESSED ESCUTCHEON.
●	SEMI-RECESSED PENDANT	TYCO	SERIES TY-FRB MODEL TY-3231	CHROME PLATED, QUICK RESPONSE, STANDARD COVERAGE, 5.6K FACTOR, 155F RATED WITH CHROME PLATED STYLE 20 RECESSED ESCUTCHEON.
○	UPRIGHT PENDANT	TYCO	SERIES TY-FRB MODEL TY-3131	CHROME PLATED, QUICK RESPONSE, STANDARD COVERAGE, 5.6K FACTOR, 155F RATED WITH PROTECTIVE CAGE (FOR MECHANICAL ROOMS)
○	PENDANT (STAINLESS STEEL)	TYCO	SERIES TY-B AND TY-FRB MODEL P/N 57-371-0-155	STAINLESS STEEL, QUICK RESPONSE, STANDARD COVERAGE, 5.6K FACTOR, 155F RATED
●	DRY SEMI-RECESSED PENDANT	TYCO	SERIES DS-1 MODEL P/N 60-364-9	CHROME PLATED, QUICK RESPONSE, STANDARD COVERAGE, 5.6K FACTOR, 286F RATED (FOR COVERED VEHICULAR ENTRY), LENGTH TO BE DETERMINED BY FIRE PROTECTION SUBCONTRACTOR PRIOR TO ORDERING
●	DRY SEMI-RECESSED PENDANT	TYCO	SERIES DS-1 MODEL P/N 60-362-9	CHROME PLATED, QUICK RESPONSE, STANDARD COVERAGE, 5.6K FACTOR, 175F RATED (FOR WALK-IN COOLER), LENGTH TO BE DETERMINED BY FIRE PROTECTION SUBCONTRACTOR PRIOR TO ORDERING

PERMIT ISSUE - 09/27/07

NO.	REVISION	DATE
SCALE: 3/32"=1' 0"	DRAWN BY: EMG	
DATE: 09/27/07	CHECKED BY: RJM	

PAUL D. SULLIVAN
8911

R. W. Sullivan Engineering
Hvac, Electrical, Plumbing, Fire Protection Code
The Scafford Center
529 Main Street, Suite 203
Boston, Massachusetts 02129-1107
Phone: (617) 524-8027
Fax: (617) 524-8016
www.rwsusa.com
RWS Job No. 2273.00

PROJECT
RESIDENCE INN BY MARRIOTT
PORTLAND, ME
JOB# 802

TITLE
FIRE PROTECTION LEGEND, GENERAL NOTES, DETAILS AND PART PLANS

GROUP ONE
21 W. THIRD STREET, BOSTON, MA 02127
TEL: (617) 268-7000 FAX: (617) 268-0209

DRAWING NO.
FP0.1