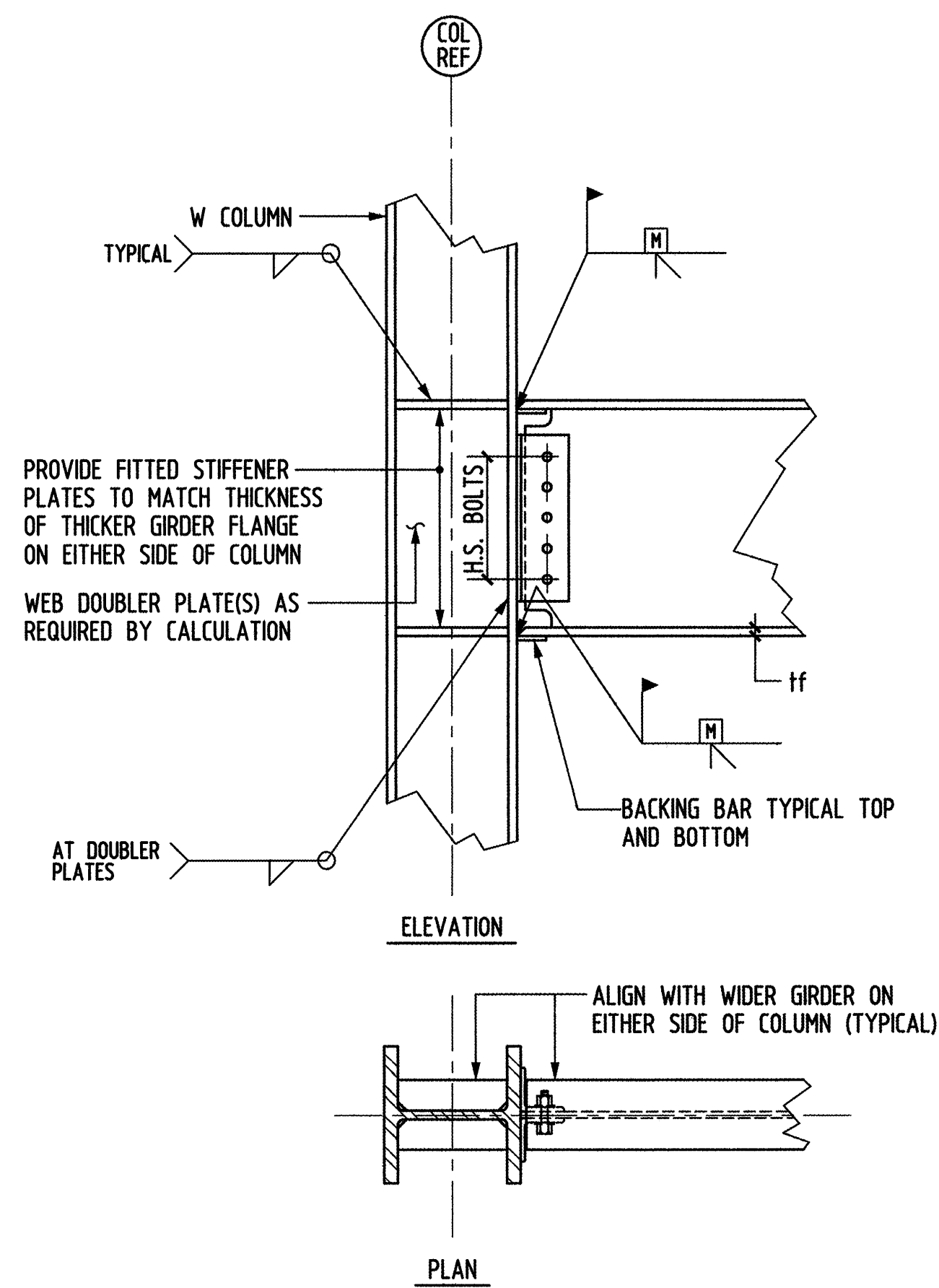
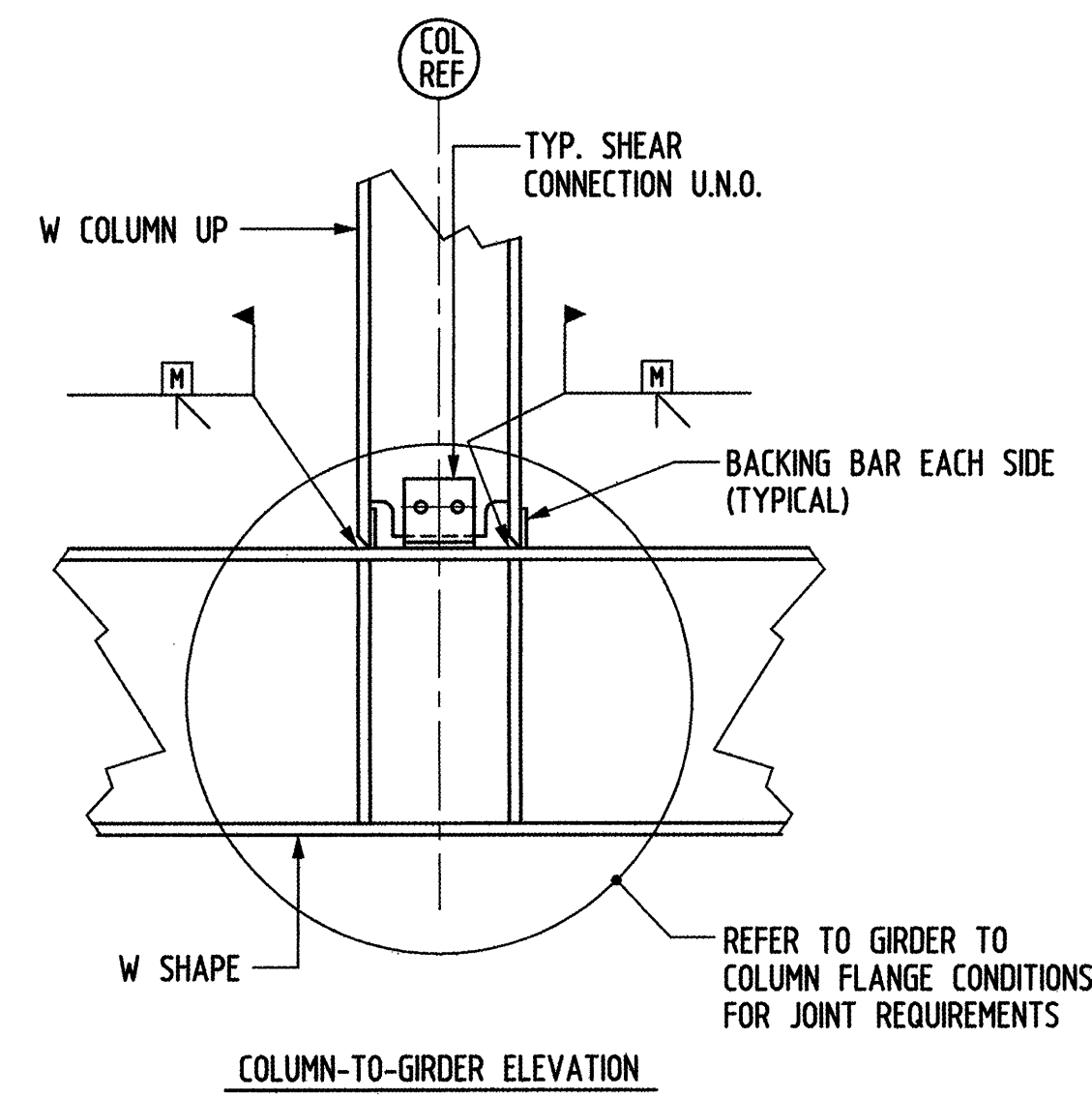


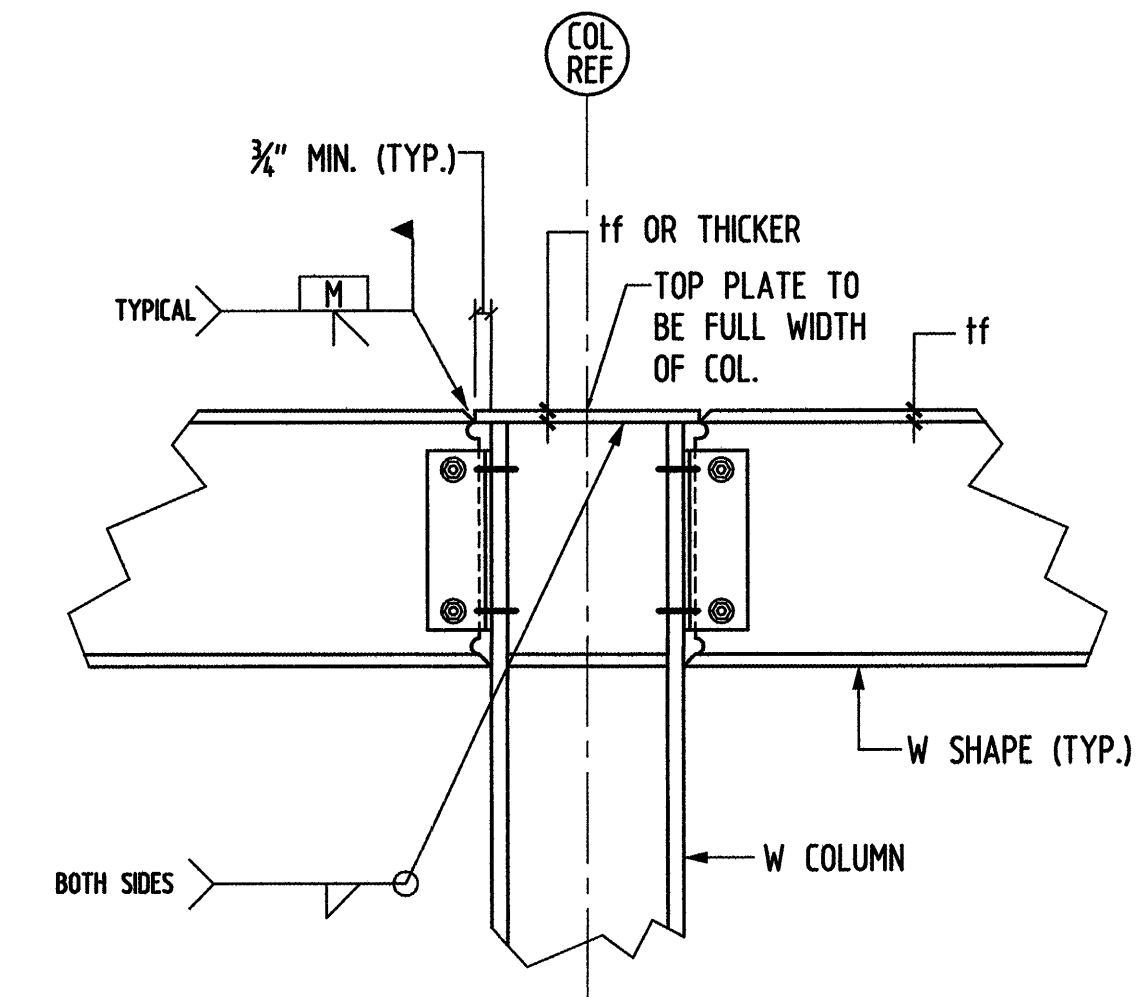
NOTE:
NOTES 1, 2, AND 3 DO NOT APPLY TO THIS CONDITION



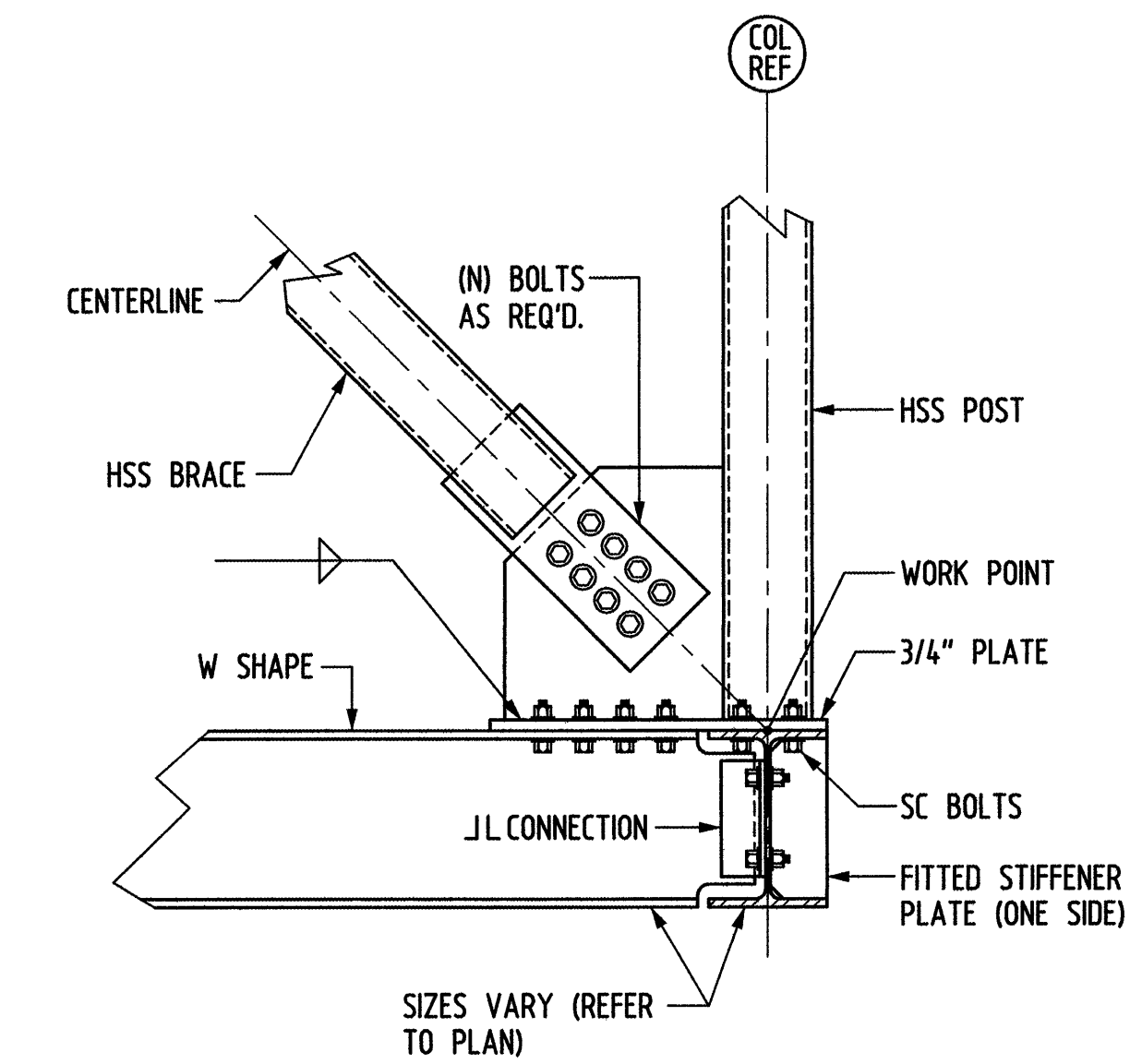
NOTE:
REFER TO NOTES 1, 2, AND 3 BELOW FOR ADDITIONAL REQUIREMENTS



NOTE:
REFER TO NOTES 1, 2, AND 3 BELOW FOR ADDITIONAL REQUIREMENTS



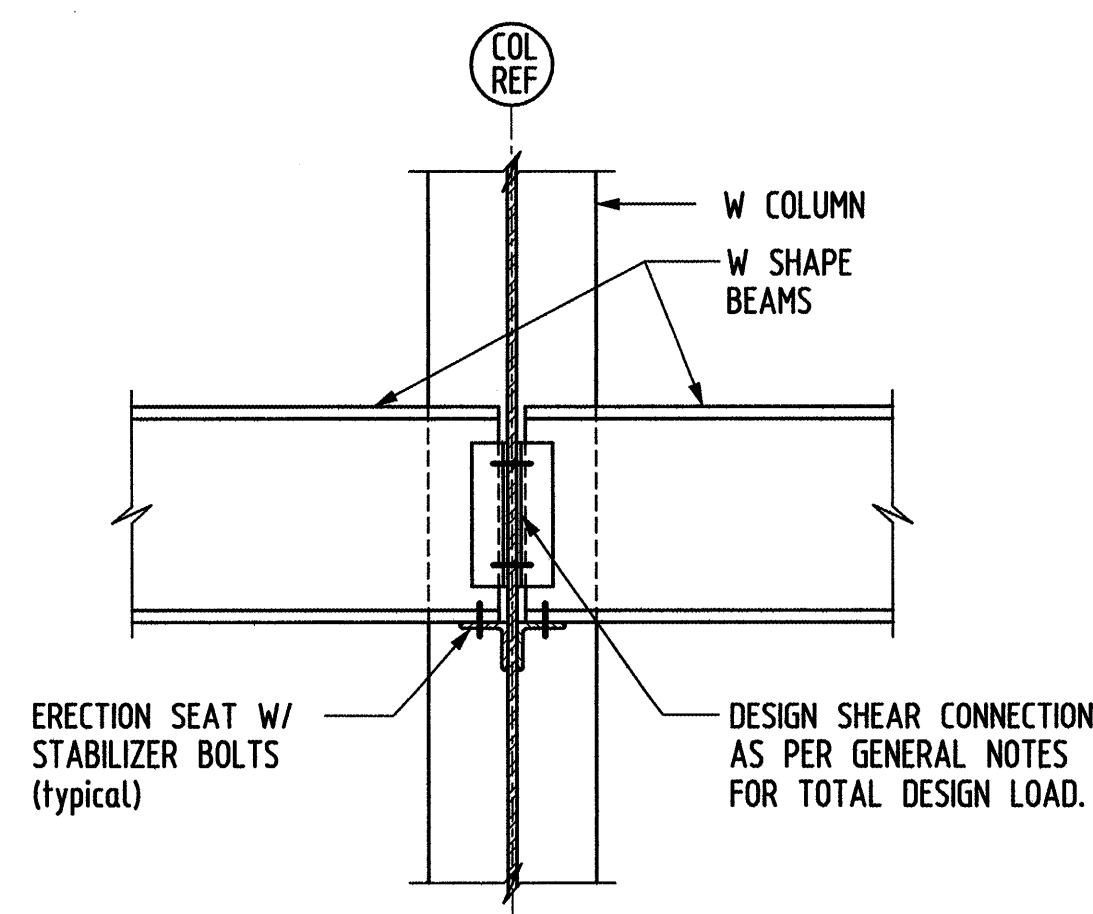
NOTES:
1. TYPICAL AT MOMENT FRAME AT TOP OF COLUMN.
2. REFER TO TYPICAL MOMENT CONNECTION DETAIL ON DRAWING S5.0 FOR ADDITIONAL REQUIREMENTS.



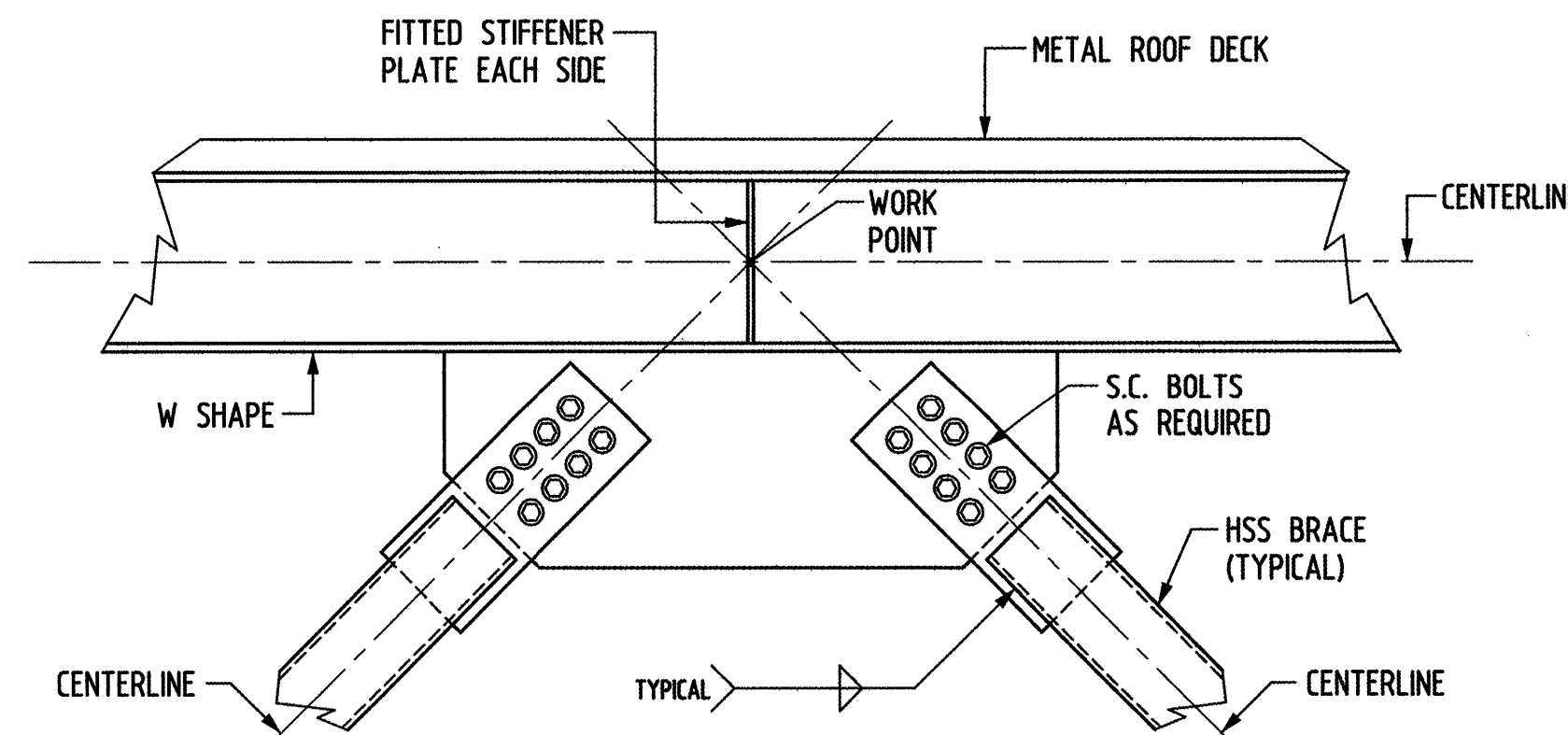
E DETAIL
S2.3 SCALE: 1"=1'-0"

TYPICAL MOMENT CONNECTION DETAILS

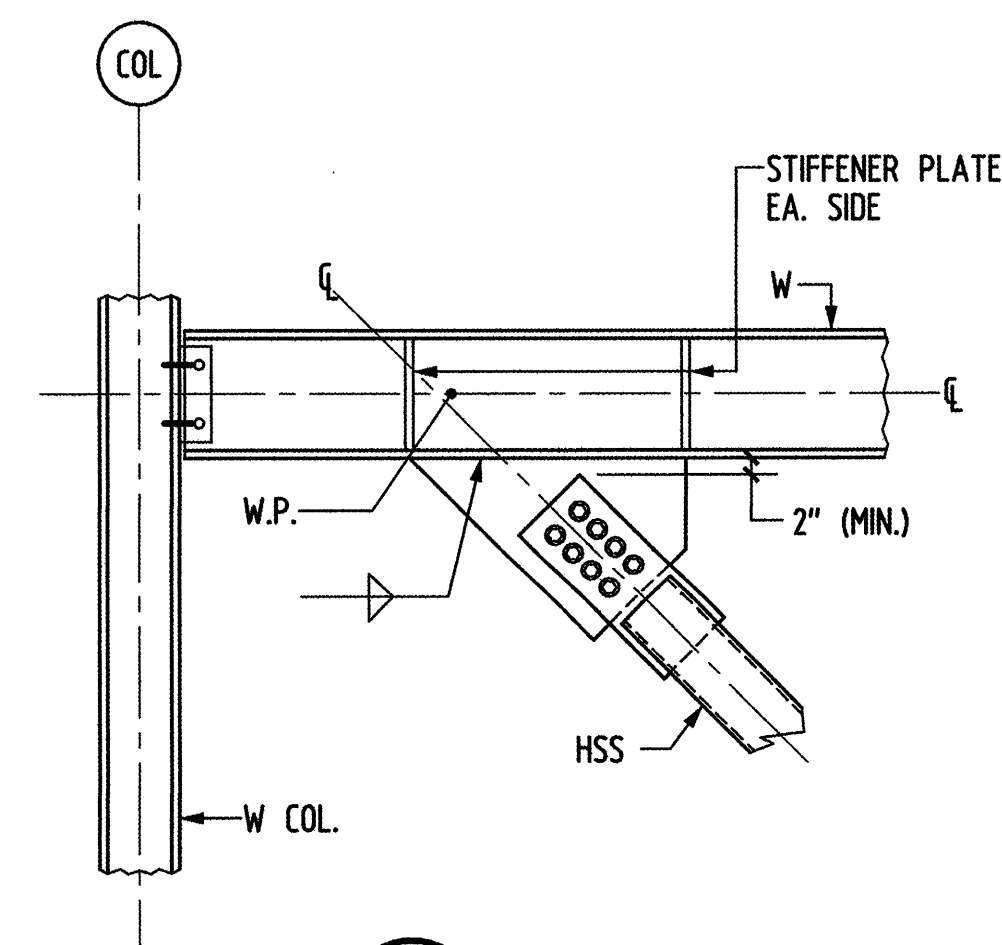
- NOTES:
- AT FULLY ENCLOSED AND HEATED BUILDINGS:
- FILLER METAL USED IN FULL PENETRATION WELDS AT MOMENT FRAMES AND AT ECCENTRIC BRACE FRAME GIRDERS, AT BEAM-TO-COLUMN OR COLUMN-TO-GIRDER CONNECTIONS SHALL HAVE A MINIMUM CHARPY V-NOTCH VALUE OF 20 FT. LBS. AT 40°F. (CVN TO BE 20 FT. LBS. AT 0°F AT OTHER BUILDINGS AND STRUCTURES)
 - BACKER BARS SHALL BE REMOVED AT ALL BOTTOM FLANGE WELDS MADE IN THE DOWN HAND POSITION AND THE ROOT PASS SHALL BE BACK GOUGED AND RE-WELDED. A REINFORCING FILLET WELD (w=1/4") SHALL BE ADDED AT THE TOP AND BOTTOM OF THE BOTTOM FLANGE AND AT EACH FLANGE OF COLUMN TO GIRDER FULL PENETRATION WELDS.
 - A REINFORCING FILLET WELD (w=1/4") SHALL BE ADDED AT THE TOP OF TOP FLANGE FULL PENETRATION WELDS.
 - NOTES 1, 2 AND 3 DO NOT APPLY AT MOMENT CONNECTIONS AT CANTILEVER/BACKSPAN CONDITIONS AND OTHER NON-LATERAL LOAD RESISTING CONDITIONS.



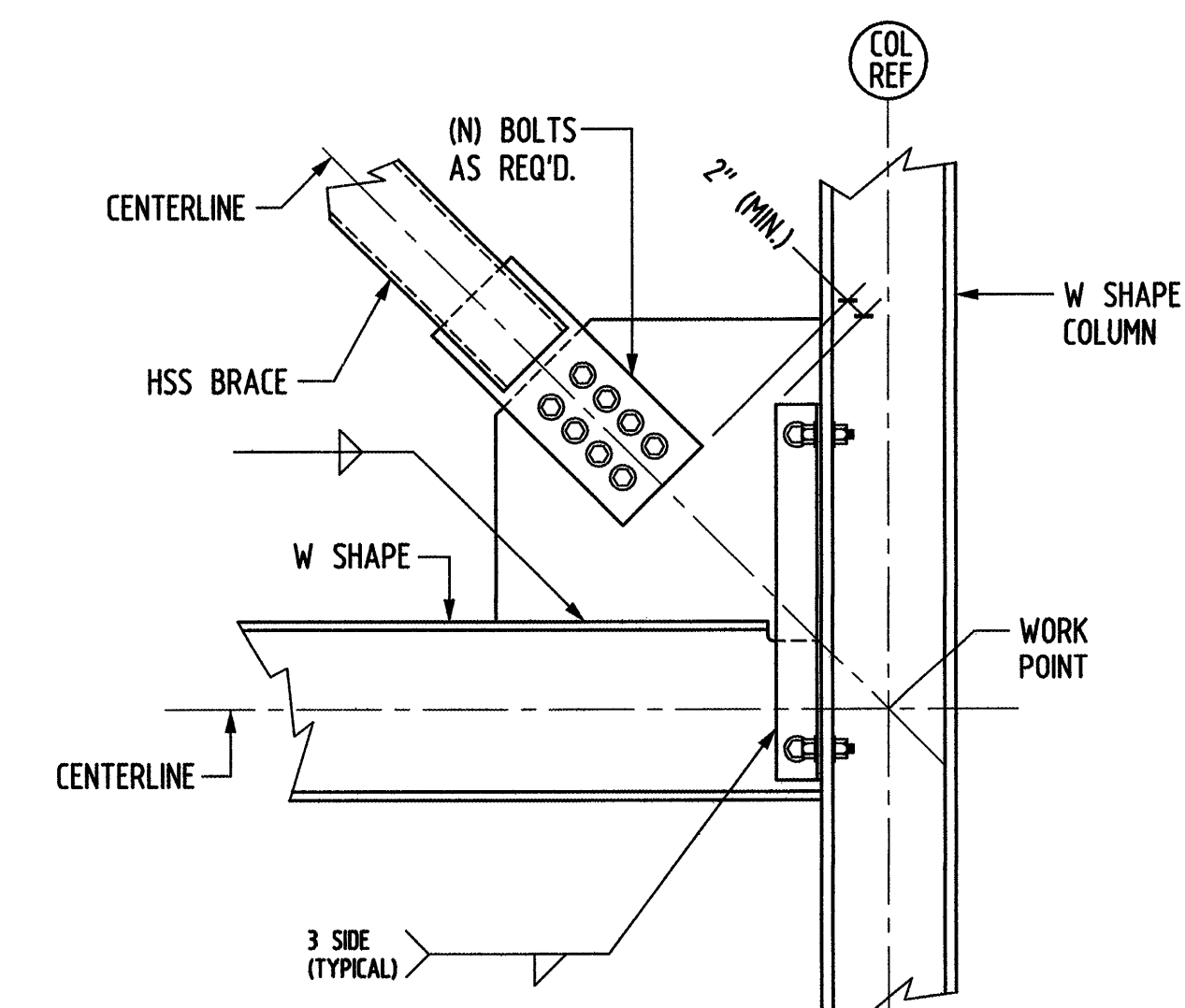
F DETAIL
S2.1 NO SCALE



D DETAIL
S3.1 NO SCALE



B DETAIL
S3.1 NO SCALE

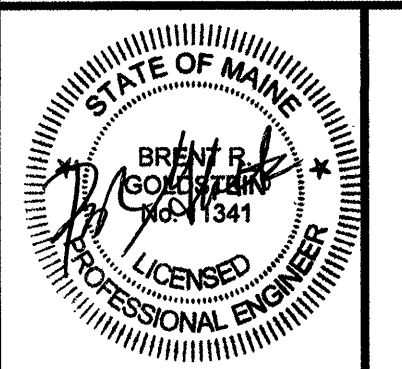


C DETAIL
S3.1 NO SCALE

TYPICAL CONNECTION AT BACK TO BACK GIRDERS TO COLUMN WEB

PERMIT ISSUE - 09/27/07

NO.	REVISION	DATE
SCALE: AS NOTED	DRAWN BY: FTV	
DATE: 09/27/07	CHECKED BY: BRG	



PROJECT
RESIDENCE INN BY MARRIOTT
PORTLAND, ME.
JOB # 27089.00

TITLE
STEEL DETAILS I

GROUP ONE
21 W. THIRD STREET, BOSTON, MA 02127
TEL. (617)268-7000 FAX: (617)268-0209

DRAWING NO.
S5.0