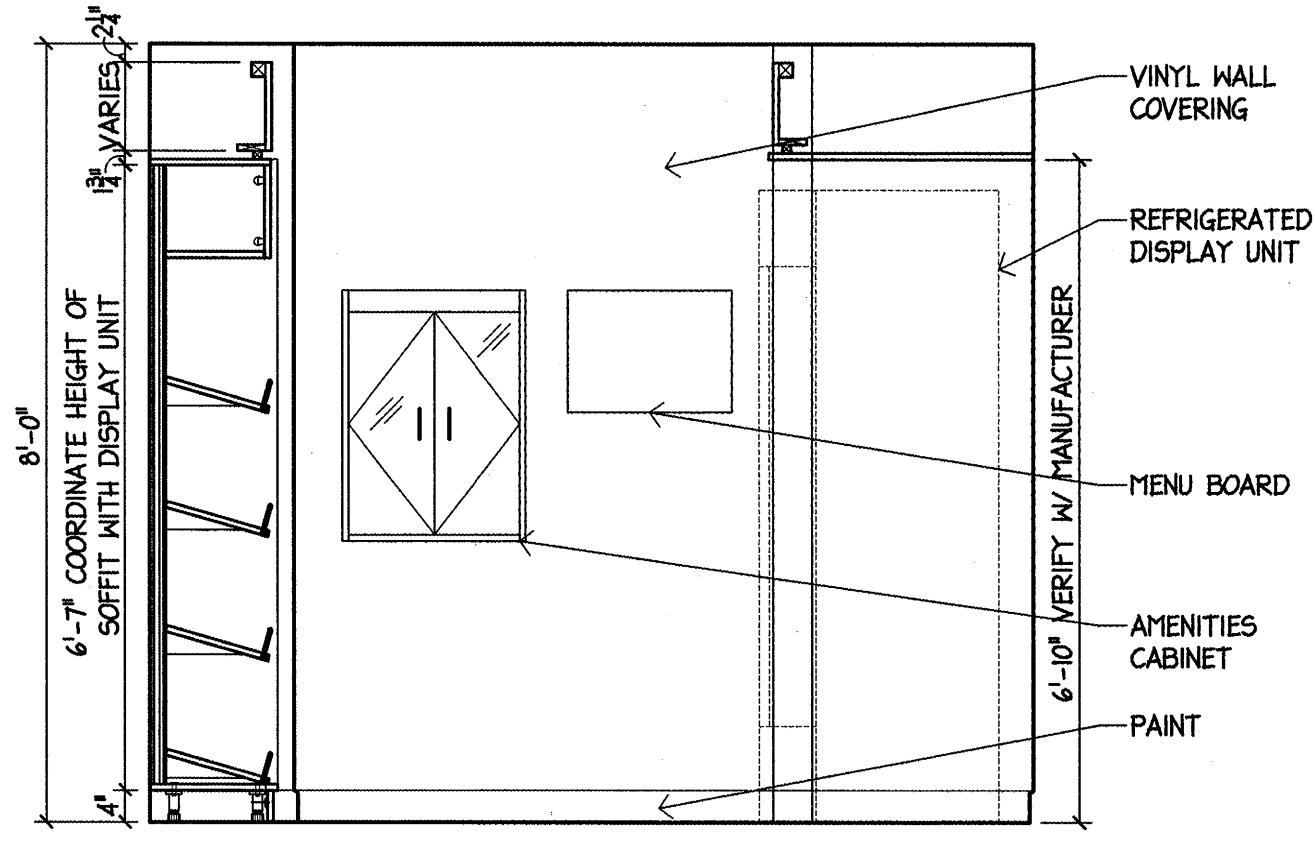
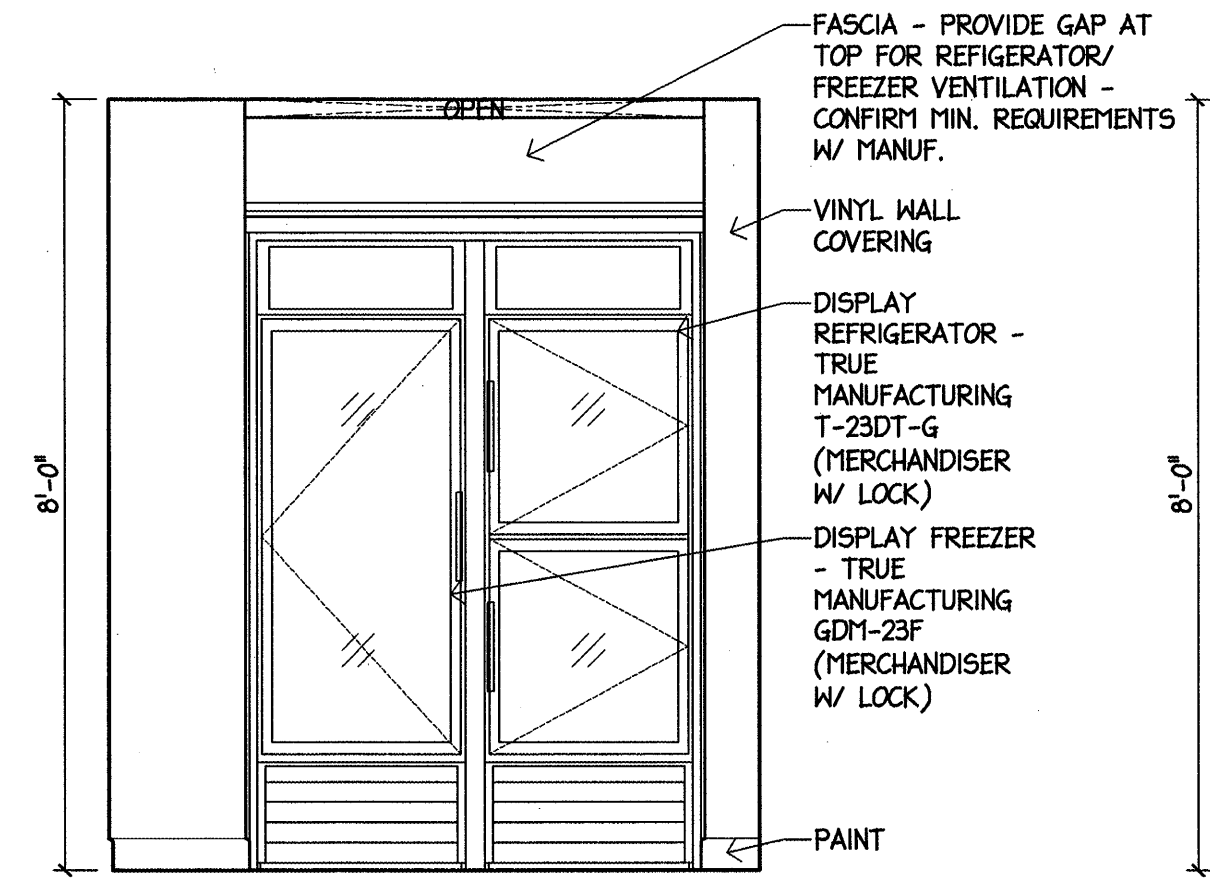


**A PLAN - MARKET**  
1/2" = 1'-0"

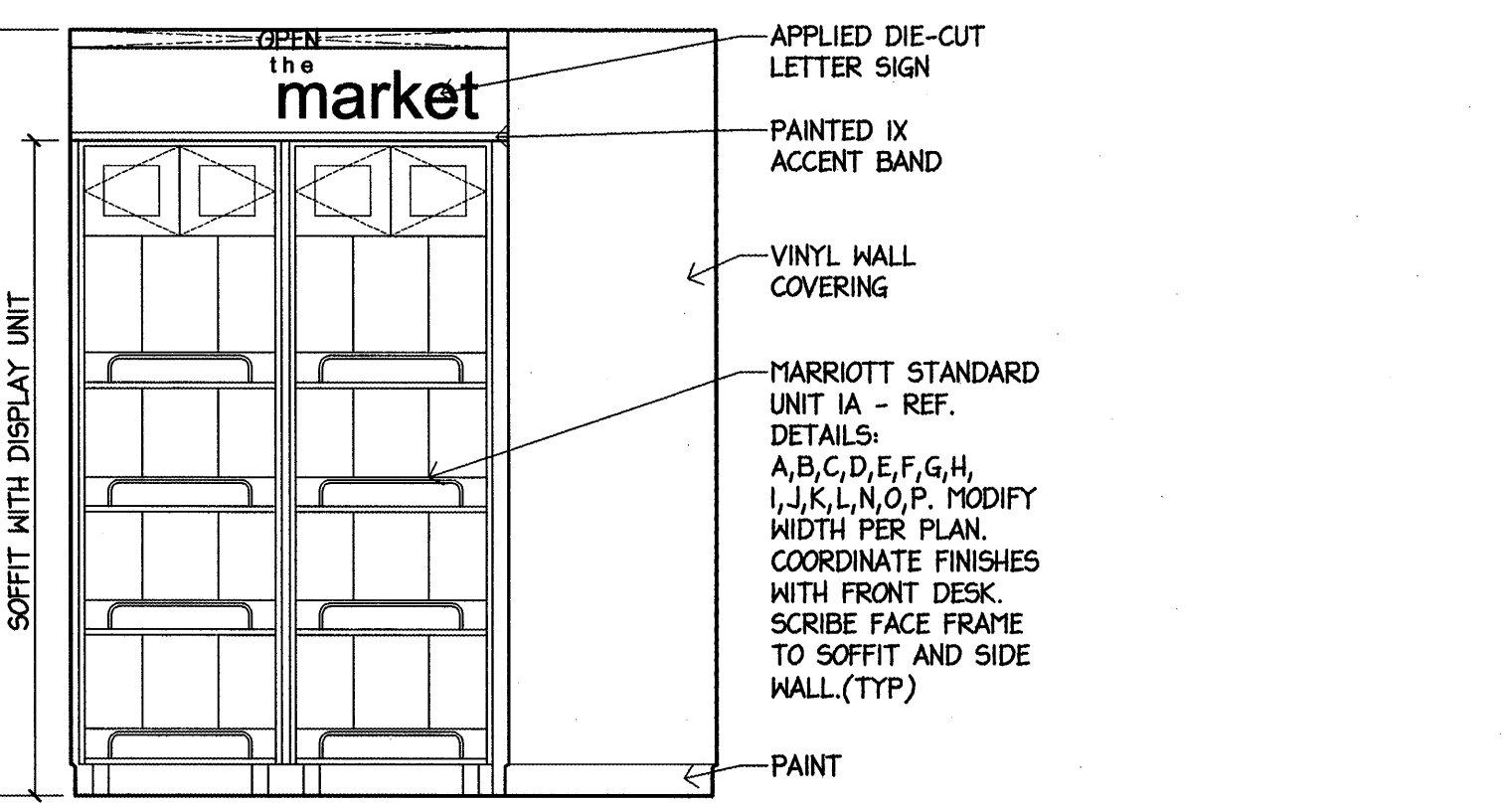


**I ELEV - MARKET**  
1/2" = 1'-0"



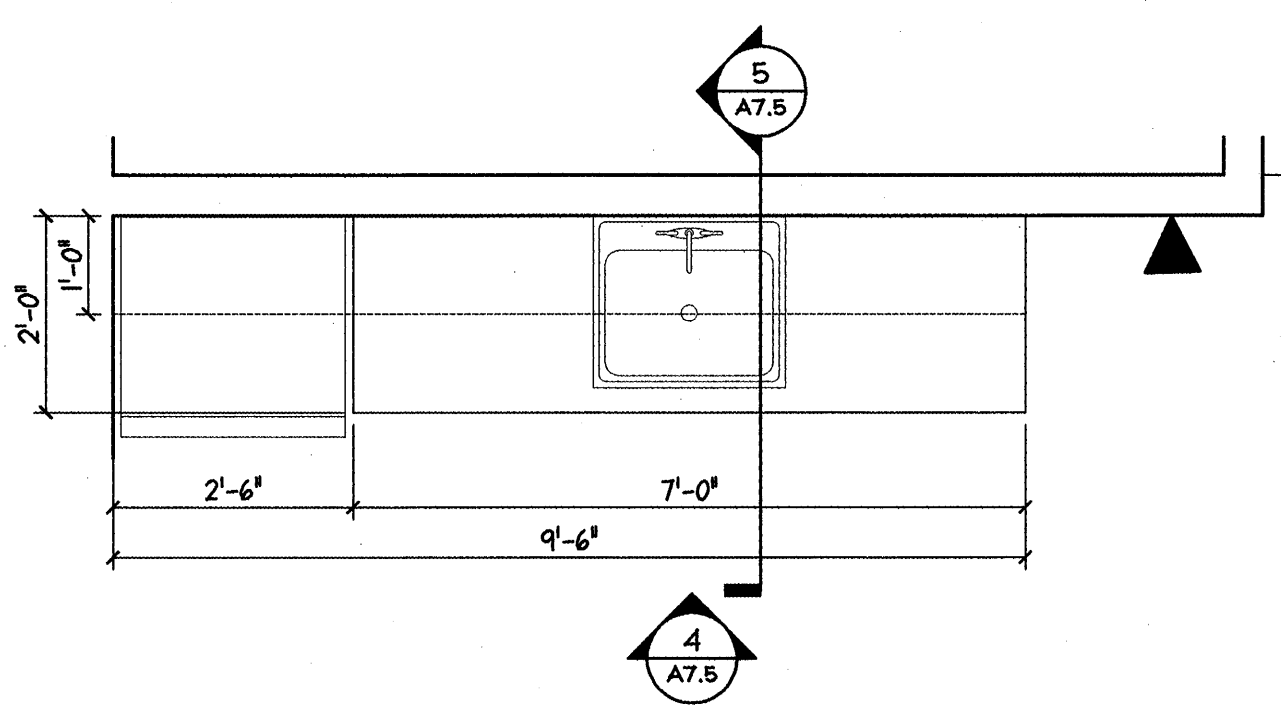
**2 ELEV - MARKET**  
1/2" = 1'-0"

NOTE: SEE SPEC FOR DETAILS

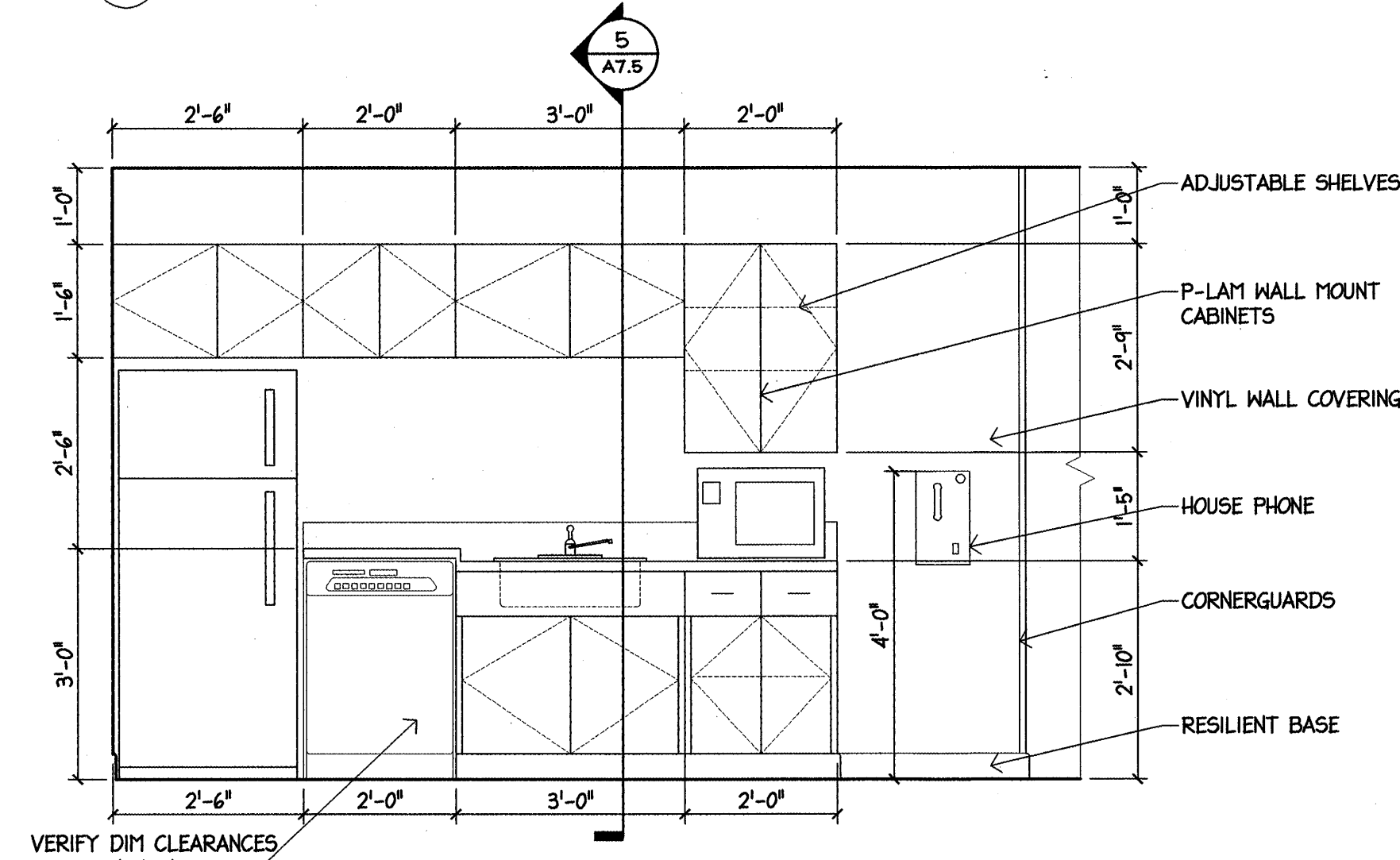


**3 ELEV - MARKET**  
1/2" = 1'-0"

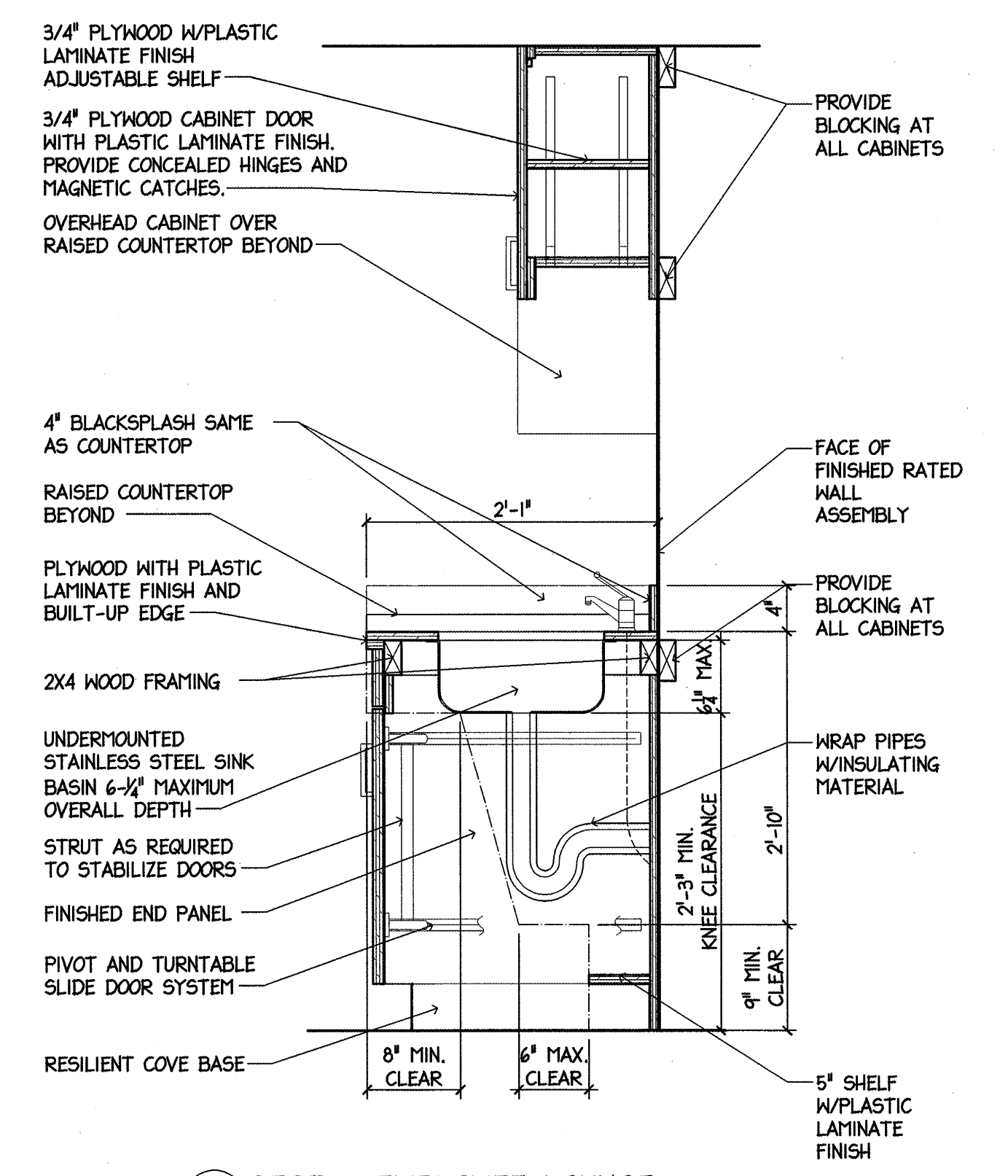
NOTE: SEE SPEC FOR DETAILS



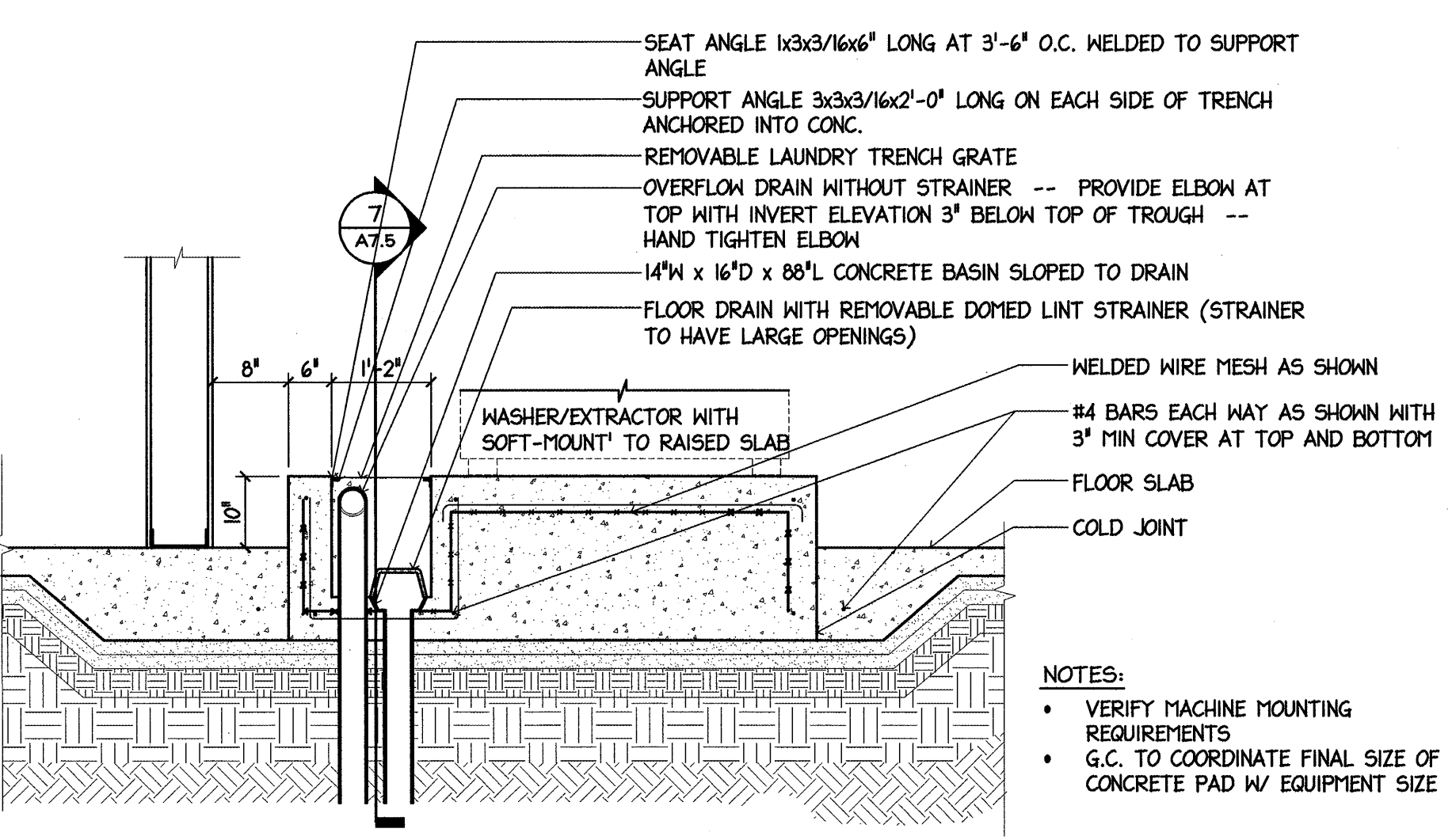
**B PLAN - EMPLOYEE LOUNGE**  
1/2" = 1'-0"



**4 ELEV - EMPLOYEE LOUNGE**  
1/2" = 1'-0"

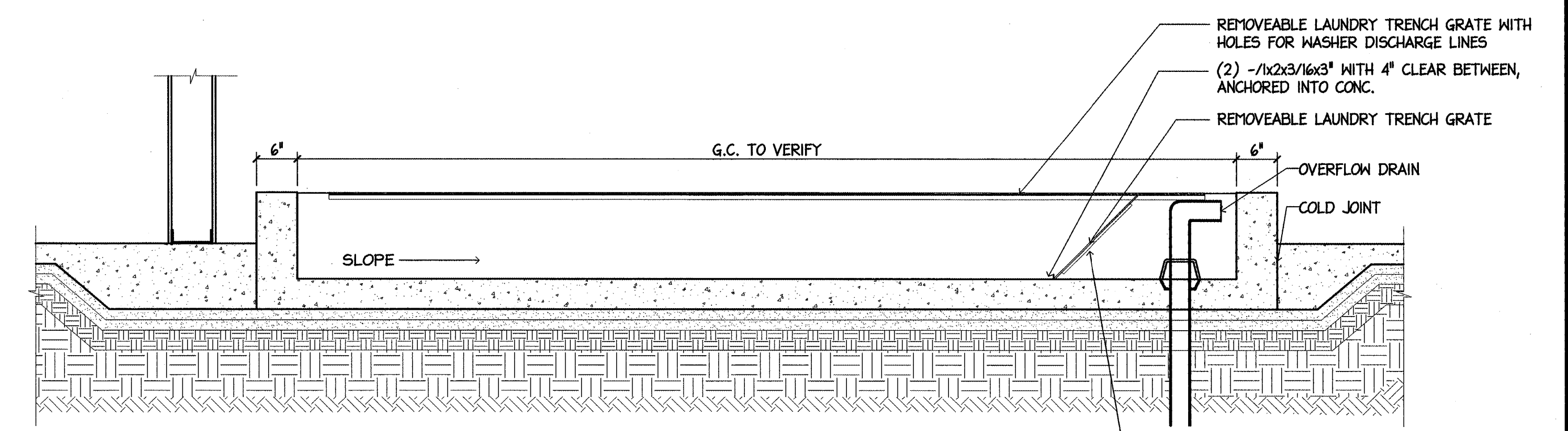


**5 SECT - EMPLOYEE LOUNGE**  
1" = 1'-0"

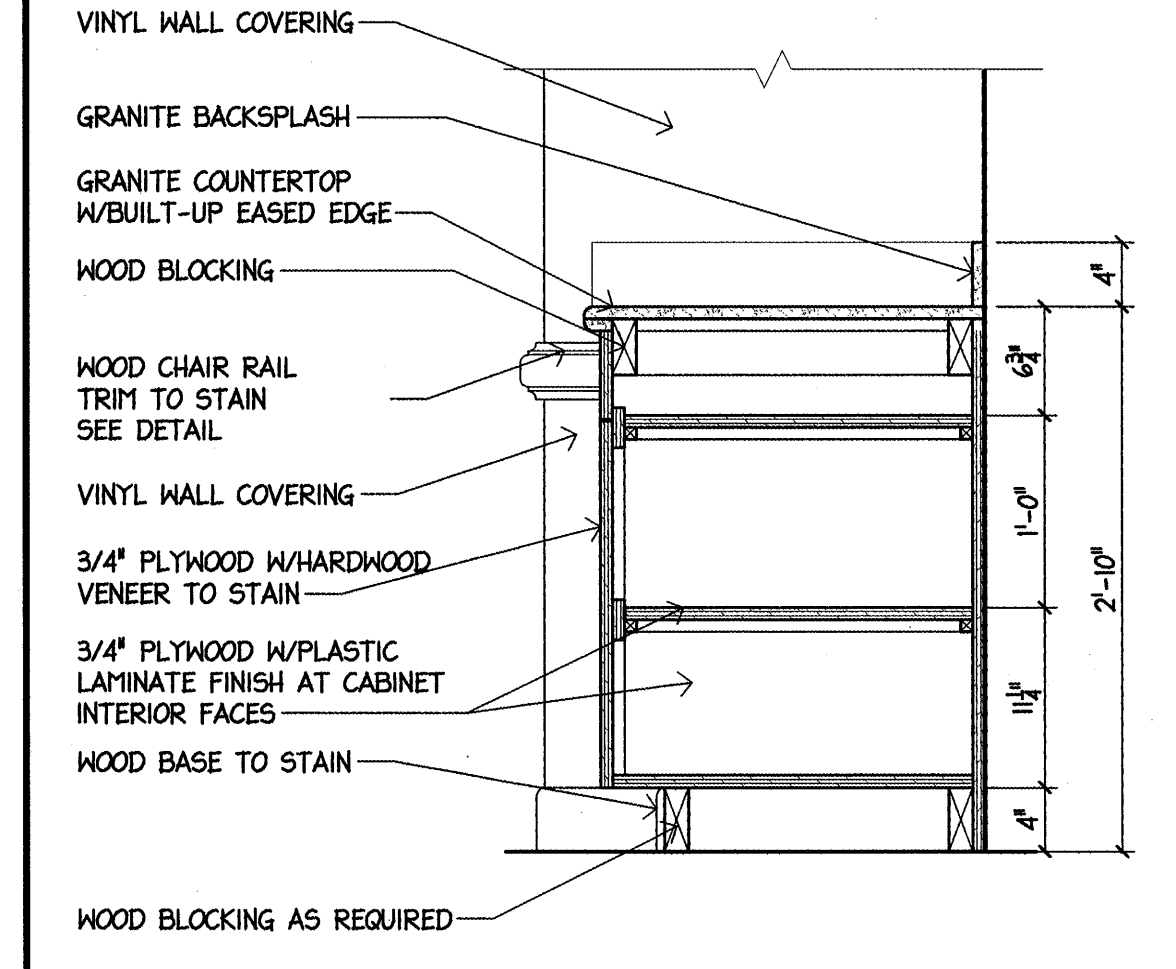


**6 WASHING MACHINE DRAINAGE PAD**  
3/4" = 1'-0"

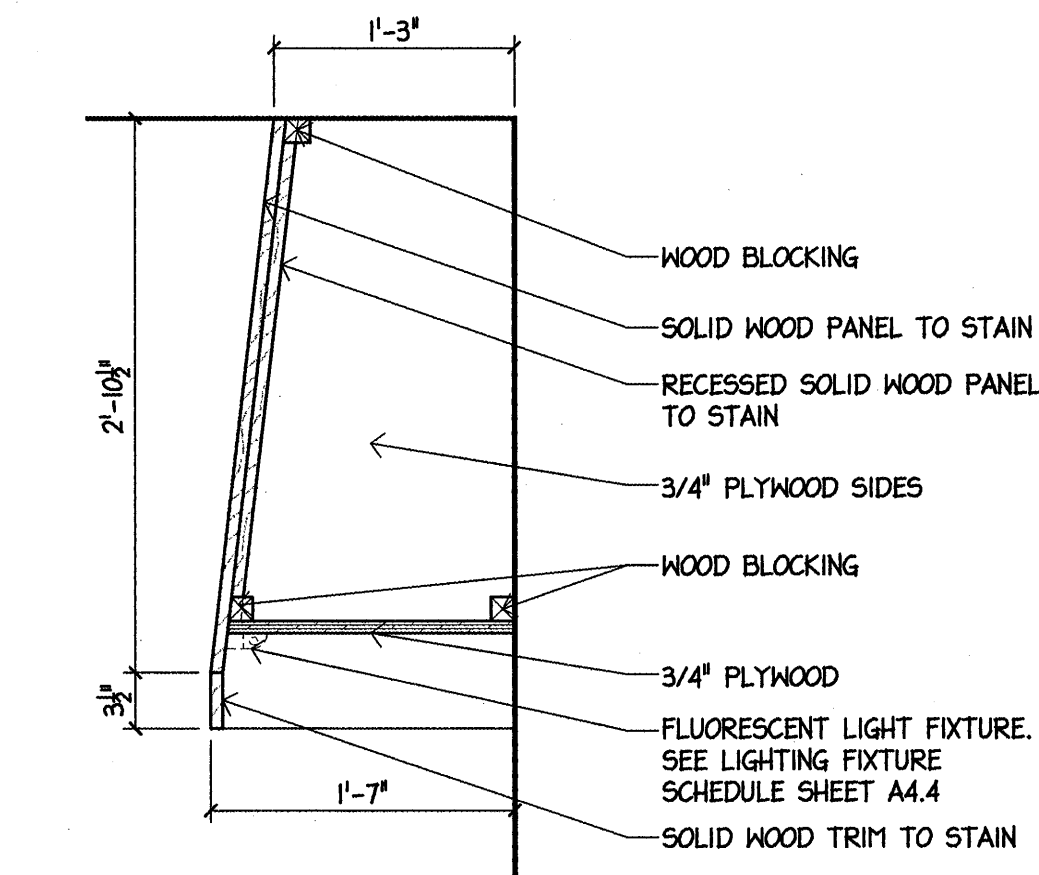
NOTES:  
• VERIFY MACHINE MOUNTING REQUIREMENTS  
• G.C. TO COORDINATE FINAL SIZE OF CONCRETE PAD W/ EQUIPMENT SIZE



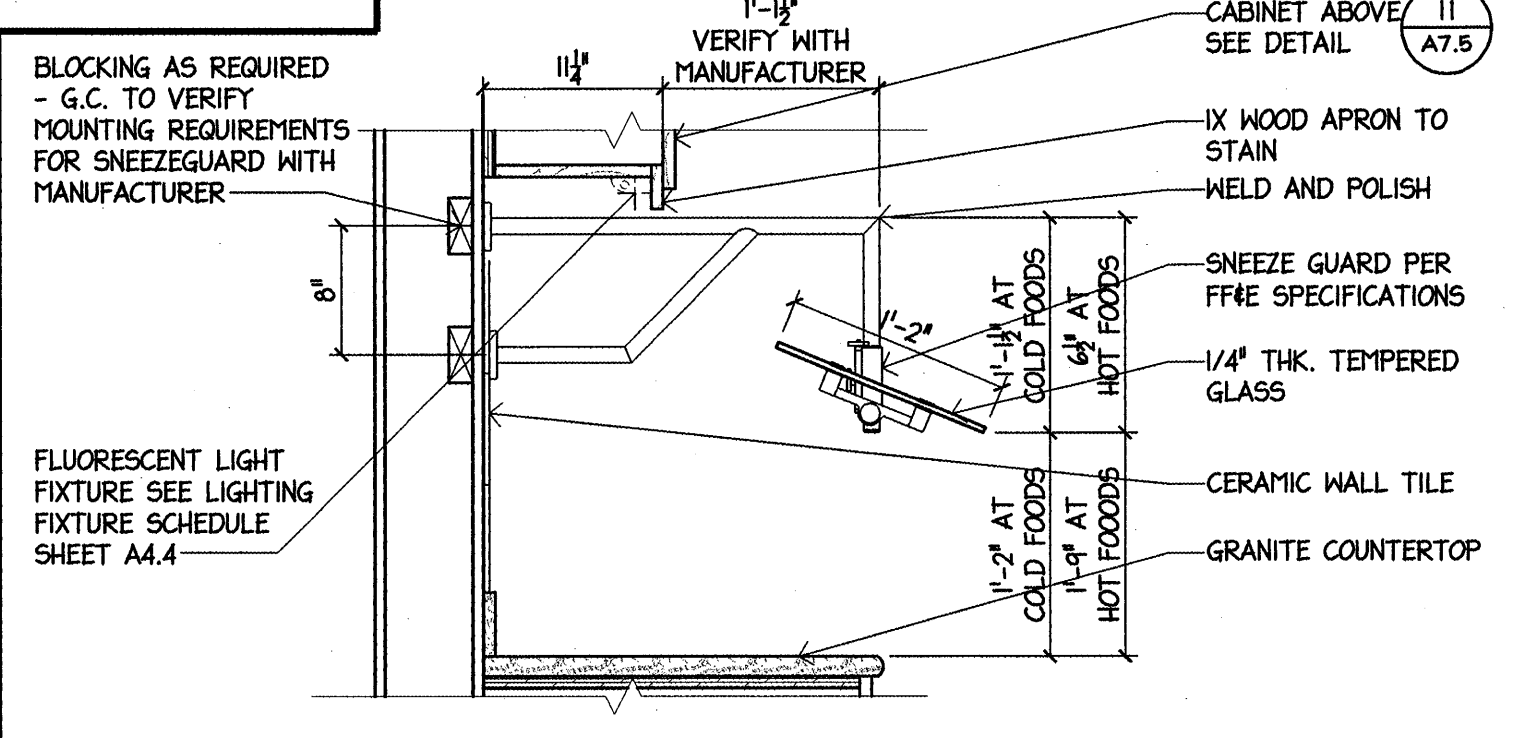
**7 WASHING MACHINE DRAINAGE PAD**  
3/4" = 1'-0"



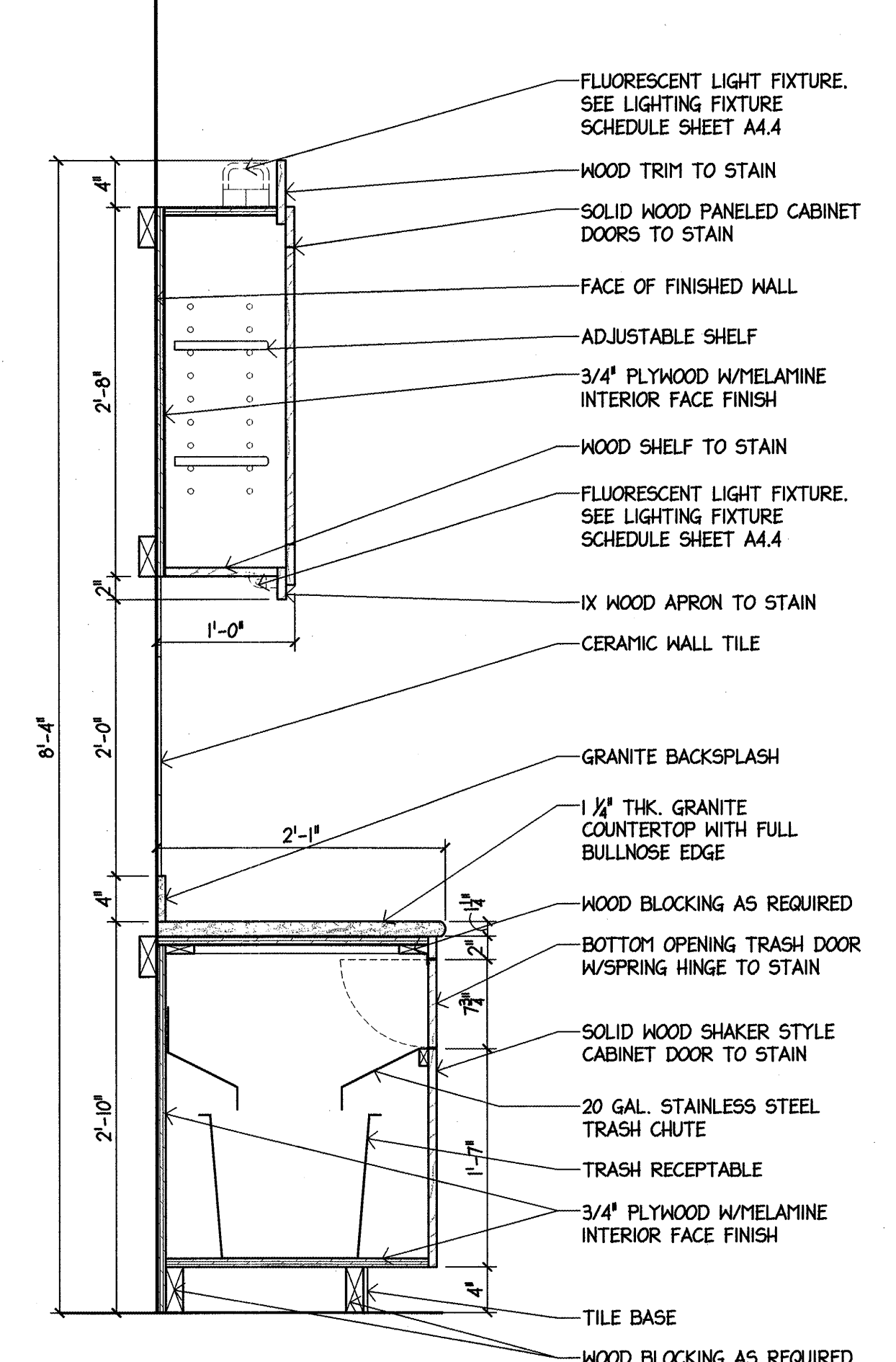
**8 MEETING ROOM/BOARDROOM COUNTER**  
1" = 1'-0"



**9 FALSE HOOD SECTION DETAIL**  
1" = 1'-0"



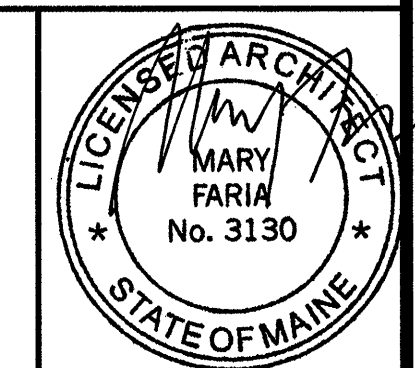
**10 SNEEZE GUARD DETAIL**  
1" = 1'-0"



**11 BUFFET SECTION AT TRASH CABINET**  
1" = 1'-0"

PERMIT ISSUE - 09/27/07

NO.	REVISION	DATE
SCALE: As Noted	DRAWN BY: ES	
DATE:	CHECKED BY: JR	



PROJECT  
**RESIDENCE INN BY MARRIOTT**  
PORTLAND, ME  
JOB# 802

TITLE  
**PUBLIC SPACE DETAILS**

GROUP ONE  
21 W. THIRD STREET, BOSTON, MA 02127  
TEL: (617)268-7000 FAX: (617)268-0209

DRAWING NO.  
**A7.5**