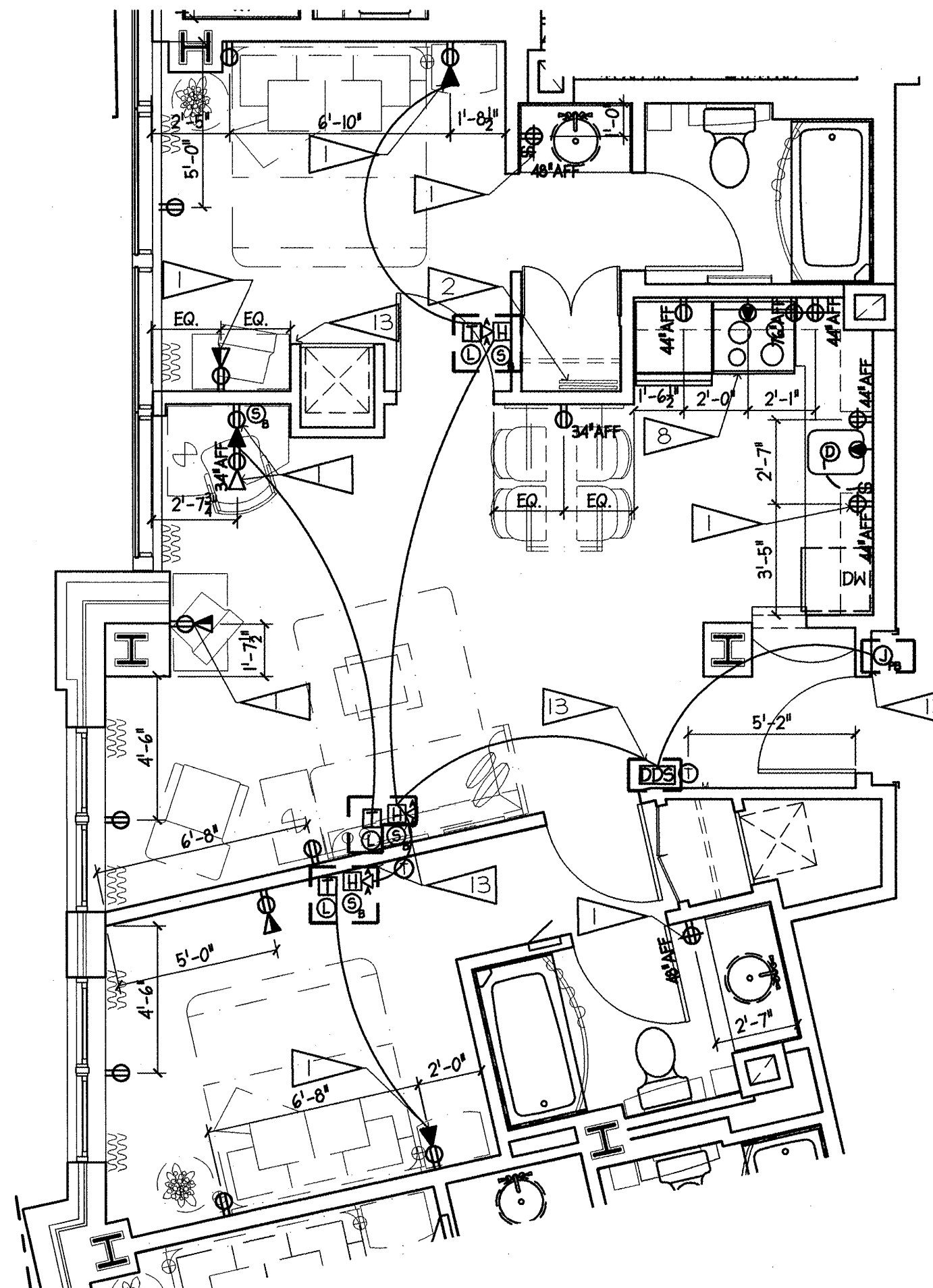
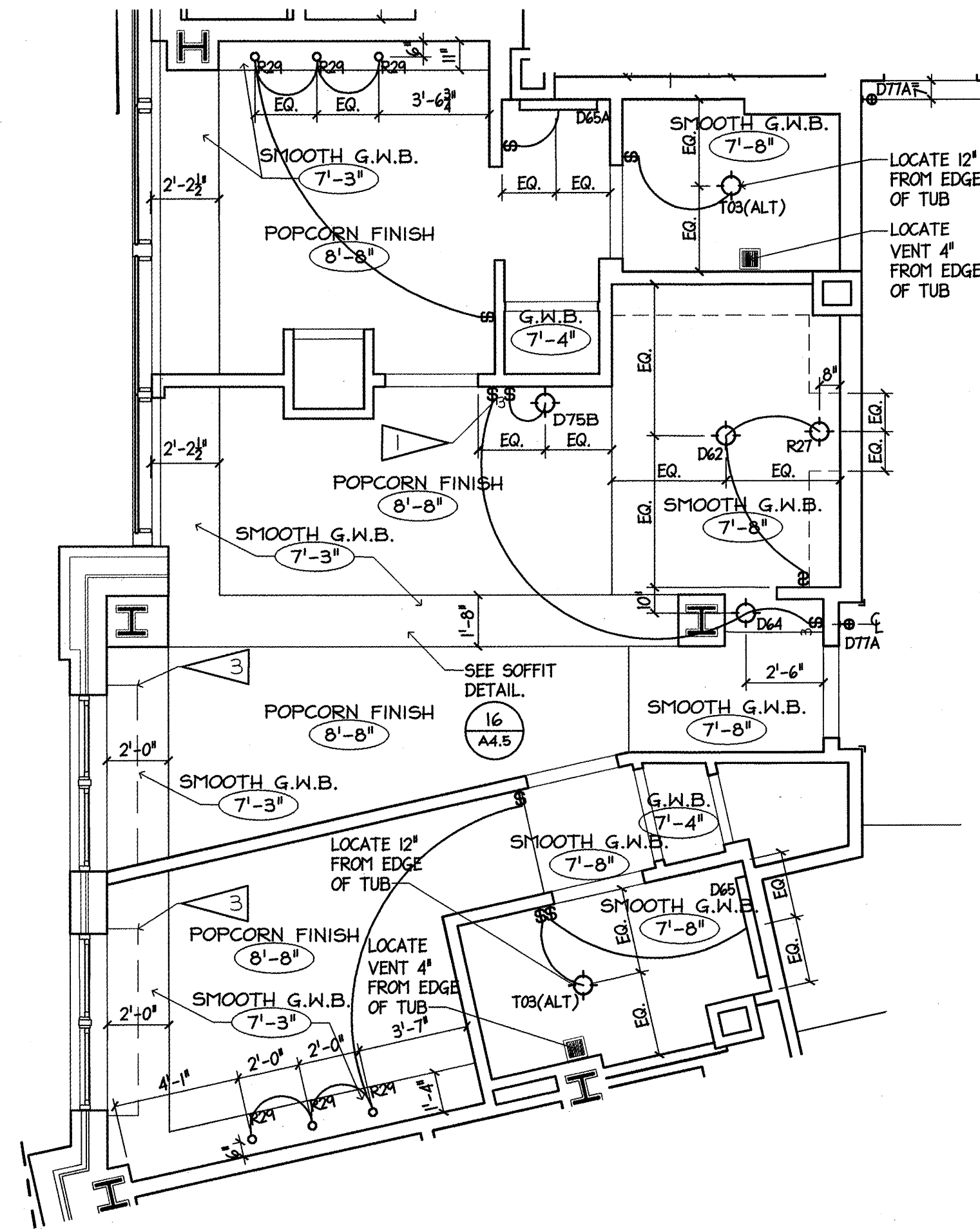


A 2 BEDROOM 2 - ENLARGED FLOOR PLAN  
1/4" = 1'-0"



B 2 BEDROOM 2 - ENLARGED POWER PLAN  
1/4" = 1'-0"



C 2 BEDROOM 2 - ENLARGED REFLECTED CEILING PLAN  
1/4" = 1'-0"

- ### ELECTRICAL SYMBOLS
- ⊞ 3-WAY LIGHTING SWITCH +48" A.F.F.
  - ⊞ TIMER SWITCH
  - ⊞ TELEPHONE OUTLET, FLUSH WALL MOUNTED +24" A.F.F., UNLESS OTHERWISE NOTED.
  - ⊞ TV OUTLET, FLUSH WALL MOUNTED +18" A.F.F., UNLESS OTHERWISE NOTED.
  - ⊞ DATA OUTLET
  - ⊞ GROUND FAULT INTERRUPTER, DUPLEX RECEPTACLE, OUTLETS TO BE MOUNTED AT 18" A.F.F. UNLESS OTHERWISE NOTED
  - ⊞ SPECIAL PURPOSE OUTLET
  - ⊞ DUPLEX RECEPTACLE, OUTLETS TO BE NOTED AT 18" A.F.F. UNLESS OTHERWISE NOTED.
  - ⊞ THERMOSTAT (54" A.F.F. TO TOP, 48" ADA)
  - ⊞ GARBAGE DISPOSAL
  - ⊞ WALL MOUNTED CARBON MONOXIDE DETECTOR
  - ⊞ TELEPHONE STROBE AT ACCESSIBLE & HEARING IMPAIRED ROOMS ONLY (80" A.F.F.)
  - ⊞ GUEST ROOM STROBE LIGHT ON WALL IN ALL ACCESSIBLE & HEARING IMPAIRED GUEST ROOMS. TOP OF STROBE AT LEAST 6'-8" AFF BUT NO MORE THAN 8'-0" AFF WHILE MAINTAINING AT LEAST 6' BELOW CEILING.
  - ⊞ GUEST ROOM SMOKE DETECTOR/ALARM, WALL MOUNTED, LOCATE AT LEAST 4" BELOW CEILING BUT NO GREATER THAN 12" IN ALL GUEST ROOMS.
  - ⊞ HORN STROBE FOR DOOR SIGNAL FOR HEARING IMPAIRED AND ACCESSIBLE ROOMS ONLY.
  - ⊞ 2-GANG BOX WITH TRANSFORMER FOR DOOR SIGNAL
  - ⊞ PUSH BUTTON FOR DOOR SIGNAL
  - ⊞ DOORBELL DISCONNECT SWITCH AT ACCESSIBLE & HEARING IMPAIRED ROOMS ONLY
  - ⊞ ELECTRICAL PANEL
  - ⊞ POWER SUPPLY FOR DISHWASHER CONNECTION

- ### CRITERIA NOTES
- 1 GANG DEVICES AT THIS LOCATION. REFER TO ELECTRICAL DRAWINGS.
  - 2 MOUNT IRONING BOARD AND IRON RACK AT 72" AFF. PROVIDE BLOCKING AT WALL.
  - 3 PROVIDE 3/4" PLYWOOD BLOCKING COVERED WITH GIB FOR VALENCE AND/OR DRAPERY HARDWARE INSTALLATION. EXTEND 7" MIN. BEYOND EACH SIDE OF WINDOW JAMB AND 12" FROM FACE OF WALL. COORDINATE BLOCKING WITH FF&E SPEC. VALENCE CONDITION AT FIRST FLOOR ONLY, SEE SPEC. VALENCE TO B E WALL MOUNTED AT
  - 4 WIRE SHELF WITH ROD AT 68" AFF
  - 5 WIRE SHELF WITH ROD AT 48" AFF. AND WITH SHELF STACK. (AT ACCESSIBLE ROOMS ONLY.)
  - 6 SHOWER HEAD ROUGH-IN AT 6'-10" A.F.F. AND SHOWER ROD AT 6'-8" A.F.F.
  - 7 PROVIDE WOOD CASING AROUND OPENING TO CLOSET - 1 1/2" ± V.I.F.
  - 8 SET COOKTOP WITH CONTROLS AWAY FROM REFRIGERATOR.
  - 9 BACK TO BACK OUTLETS TO BE IN SEPERATE STUD BAYS AND 2'-0" MIN. APART TYP. WHERE NOT POSSIBLE, PROVIDE FIRESTOPPING PUTTY PACK. NO BACK TO BACK OUTLETS.
  - 10 CABINET DOORS SLIDE INTO CABINET WHEN FULLY OPENED IN ACCESSIBLE ROOMS ONLY. EXTEND FLOORING TO WALL BELOW CABINET OPEN TOE SPACE.
  - 11 INSULATE EXPOSED HOT WATER PIPING AND DRAIN LINES.
  - 12 CLEAR DIMENSIONS TO BE VERIFIED WITH FUTURE OR EQUIPMENT MANUFACTURER SPECIFICATIONS.
  - 13 AT ACCESSIBLE ROOMS AND HEARING IMPAIRED ROOMS ONLY.

CORNER GUARDS AT ALL OUTSIDE CORNERS IN GUESTROOM CORRIDOR

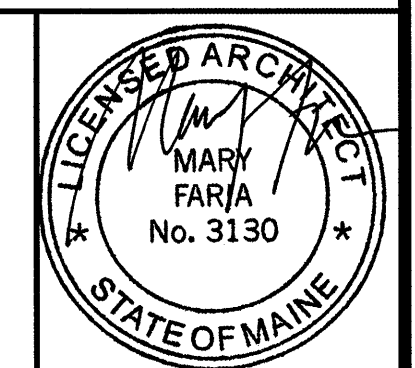
SEE A1.20 FOR TOILET ACCESS, AND OUTLET HEIGHTS

- ### CEILING PLAN SYMBOLS
- ⊞ CEILING LIGHT FIXTURE SPECIFICATION CALLOUT, SEE SCHEDULE.
  - ⊞ RECESSED LIGHTING FIXTURE SPECIFICATION CALLOUT, SEE SCHEDULE.
  - ⊞ ENTRY SCONCE, J-BOX TO BE PROVIDED AT 2' A.F.F.
  - ⊞ SPECIFICATION CALLOUT, SEE SCHEDULE.
  - ⊞ DECORATIVE SCONCE, SEE ELEV FOR J-BOX HEIGHTS
  - ⊞ SPECIFICATION CALLOUT, SEE SCHEDULE.
  - ⊞ DECORATIVE BATH WALL LIGHT. SEE ELEV FOR MOUNTING HEIGHTS.
  - ⊞ CEILING MATERIAL
  - ⊞ FINISH CEILING HEIGHT

- ### GENERAL NOTES:
- BLOCKING TO BE PROVIDED FOR FF&E ACCESSORIES AND COORDINATED WITH FF&E SPECIFICATIONS.
  - BLOCKING TO BE 20 GA. METAL EXCEPT AT GRAB BARS TO BE F.T. 2X.
  - KITCHEN COUNTERTOPS AND WELCOME SHELF TO HAVE FULLY ROUNDED EDGES. REFER TO DETAILS.
  - ALL DOORS TO BE 1'-10" TO CENTERLINE OF OPENING FROM FINISHED WALL UNLESS OTHERWISE NOTED
  - REFER TO SHEET A9.0 FOR ROOM FINISH SCHEDULE
  - SEE OVERALL PLANS FOR EXACT LOCATIONS OF ROLL-IN SHOWERS
  - PROVIDE COPPER-COIL WATER SUPPLY TO REFRIGERATOR ICE MAKER
  - REFER TO GUESTROOM DETAILS FOR TILE PLAN DETAILS
  - SEAL UNDERSIDE OF PLANK JOINTS WITH JOINT FILLER AND APPLY FIBERGLASS MESH BEFORE SKIM COATING AND FINAL FINISH

PERMIT ISSUE - 09/27/07

NO.	REVISION	DATE
SCALE: As Noted	DRAWN BY: ES	
DATE:	CHECKED BY: JR	



PROJECT

**RESIDENCE INN BY MARRIOTT**

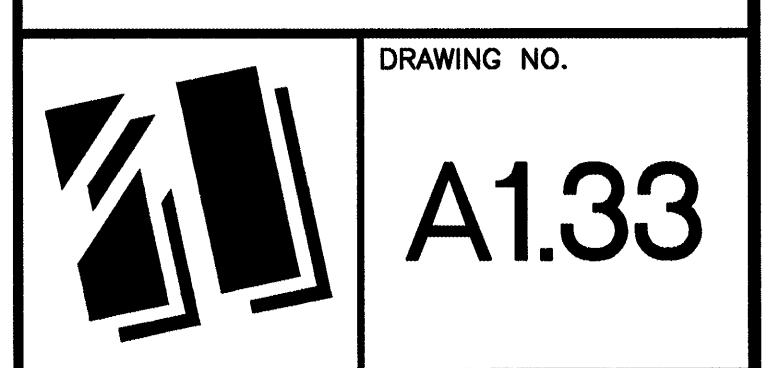
PORTLAND, ME

JOB# 802

TITLE

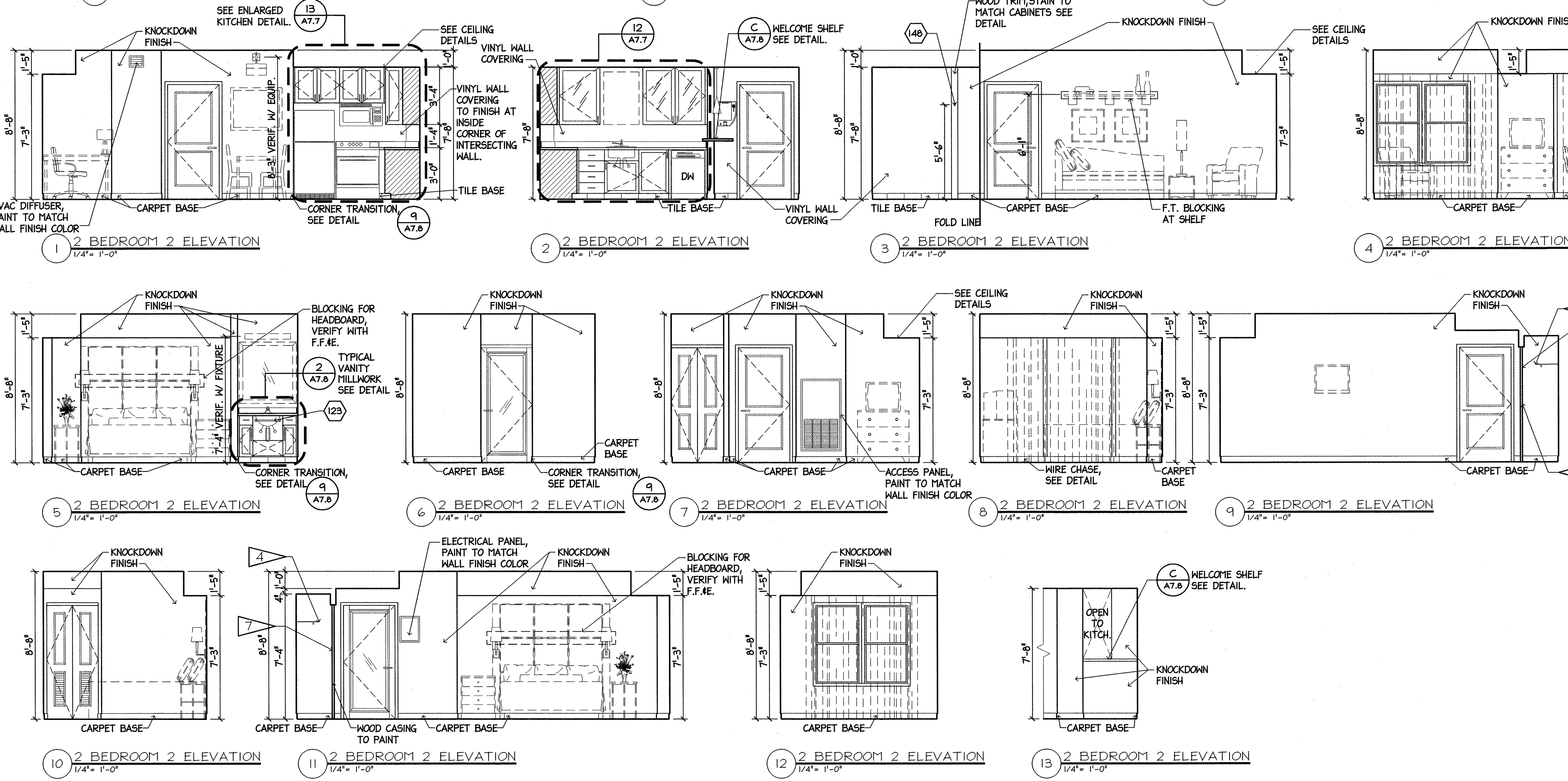
**GUESTROOMS - ENLARGED PLANS AND ELEVATIONS**

GROUP ONE  
21 W. THIRD STREET, BOSTON, MA 02127  
TEL: (617)268-7000 FAX: (617)268-0209



GUEST ROOM MATRIX

BEDROOM	1st	2nd	3rd	4th	5th	TOTAL
ONE BEDROOM 1	0	6	7	7	7	27
ONE BEDROOM 1 HEARING IMPAIRED	0	1	0	0	0	1
ONE BEDROOM 2	0	0	0	1	1	2
ONE BEDROOM 3 ADA	1	1	1	0	0	3
ONE BEDROOM 4 ADA	1	0	0	0	0	1
TWO BEDROOM 1	0	1	1	1	1	4
TWO BEDROOM 2	0	0	1	1	1	3
TWO BEDROOM 2 HEARING IMPAIRED	0	1	0	0	0	1
	2	10	10	10	10	42
<b>STUDIO</b>						
URBAN STUDIO 1	9	16	16	16	16	73
URBAN STUDIO 2	0	9	9	9	9	36
URBAN STUDIO 1 HEARING IMPAIRED	0	1	1	1	1	4
URBAN STUDIO 3	0	2	2	2	2	8
STUDIO 4	0	1	1	1	1	4
STUDIO 5	0	1	1	1	1	4
STUDIO 6	0	1	1	1	1	4
STUDIO 7 ADA	0	1	1	1	1	4
	9	32	32	32	32	137
<b>TOTAL</b>	<b>11</b>	<b>42</b>	<b>42</b>	<b>42</b>	<b>42</b>	<b>179</b>



REFER TO A1.0-A1.2 FOR BRACE FRAMING WALL TYPE LOCATIONS