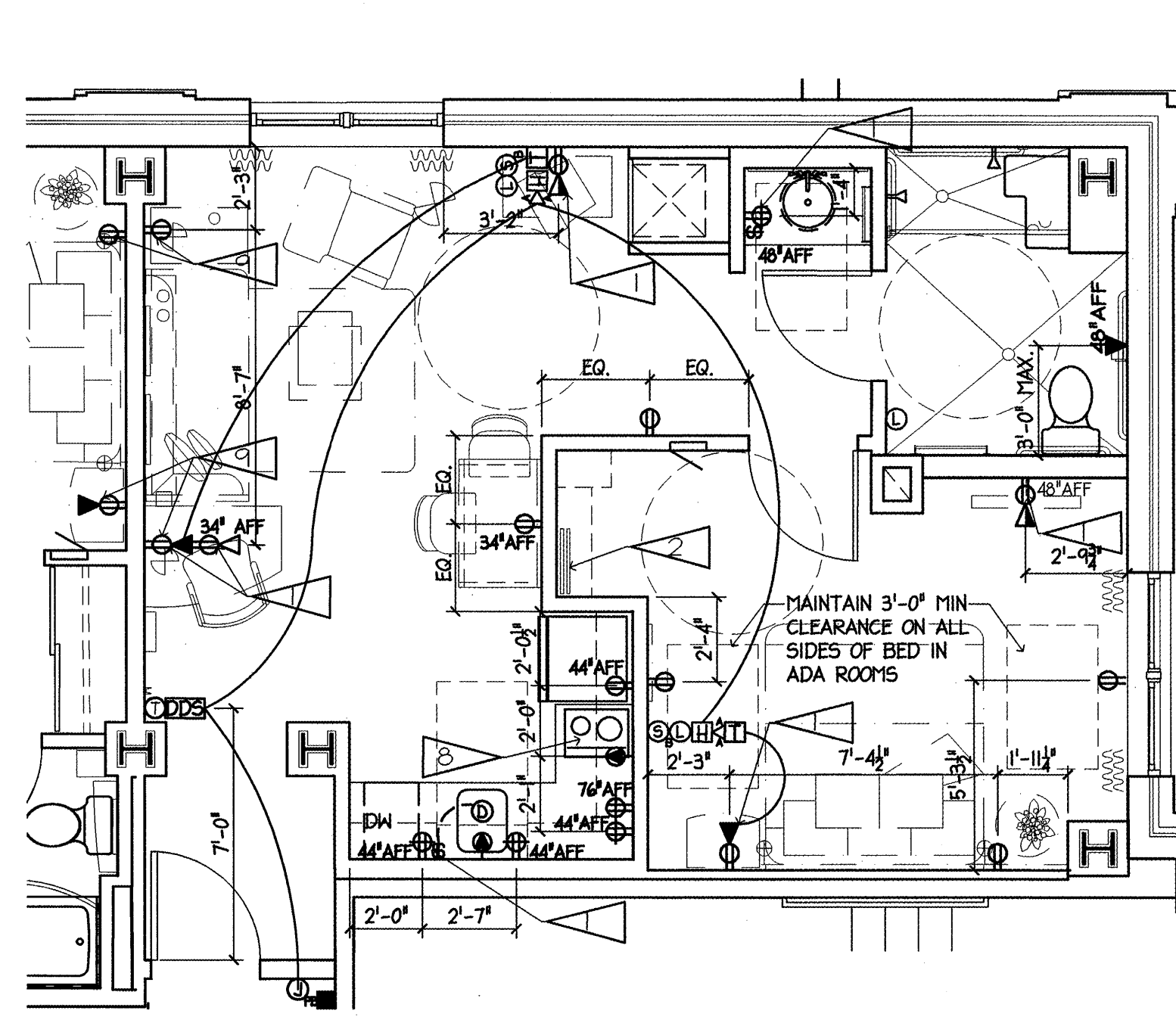
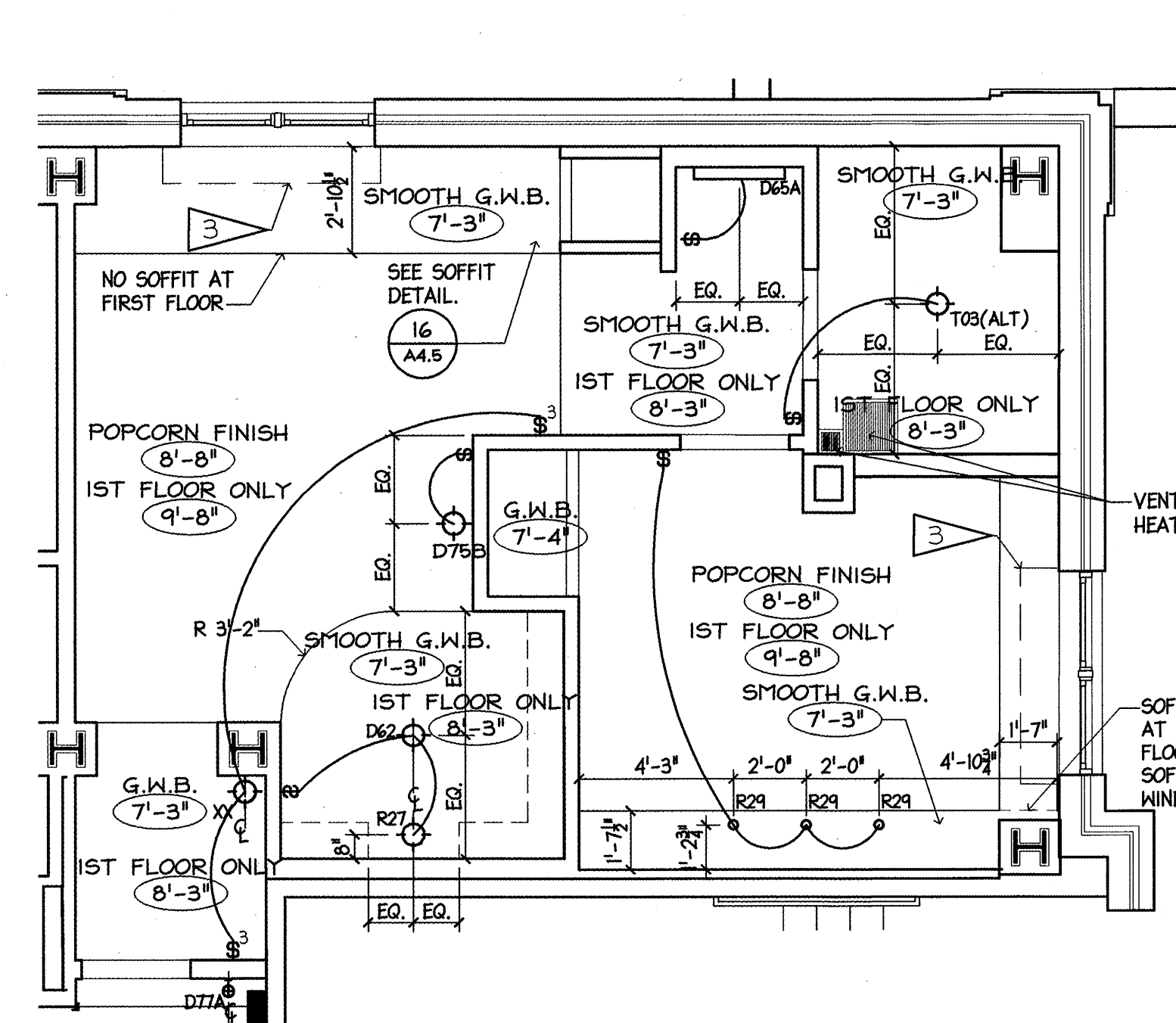


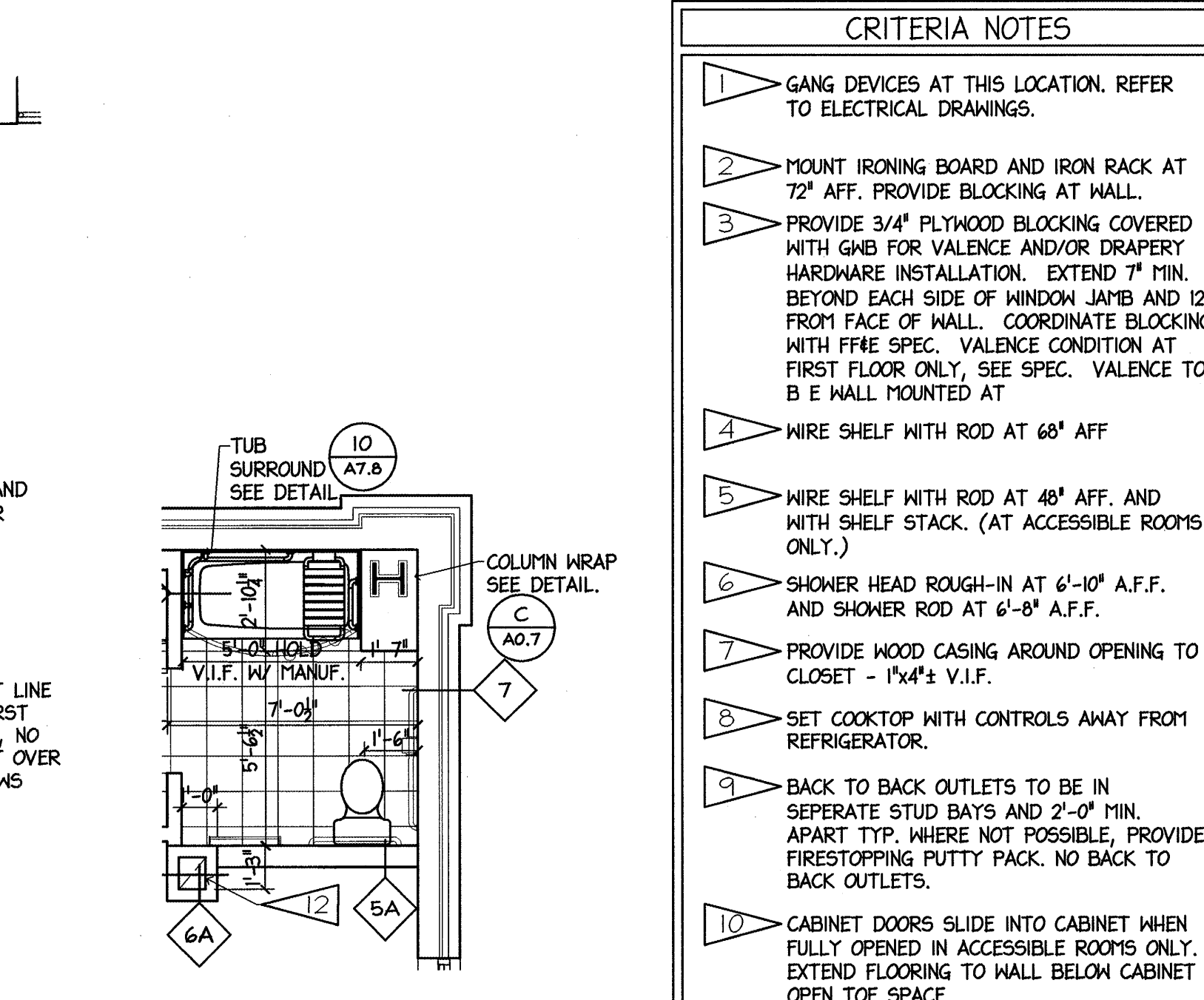
A 1 BEDROOM 3 ADA - ENLARGED FLOOR PLAN
1/4" = 1'-0"



B 1 BEDROOM 3 ADA - ENLARGED POWER PLAN
1/4" = 1'-0"

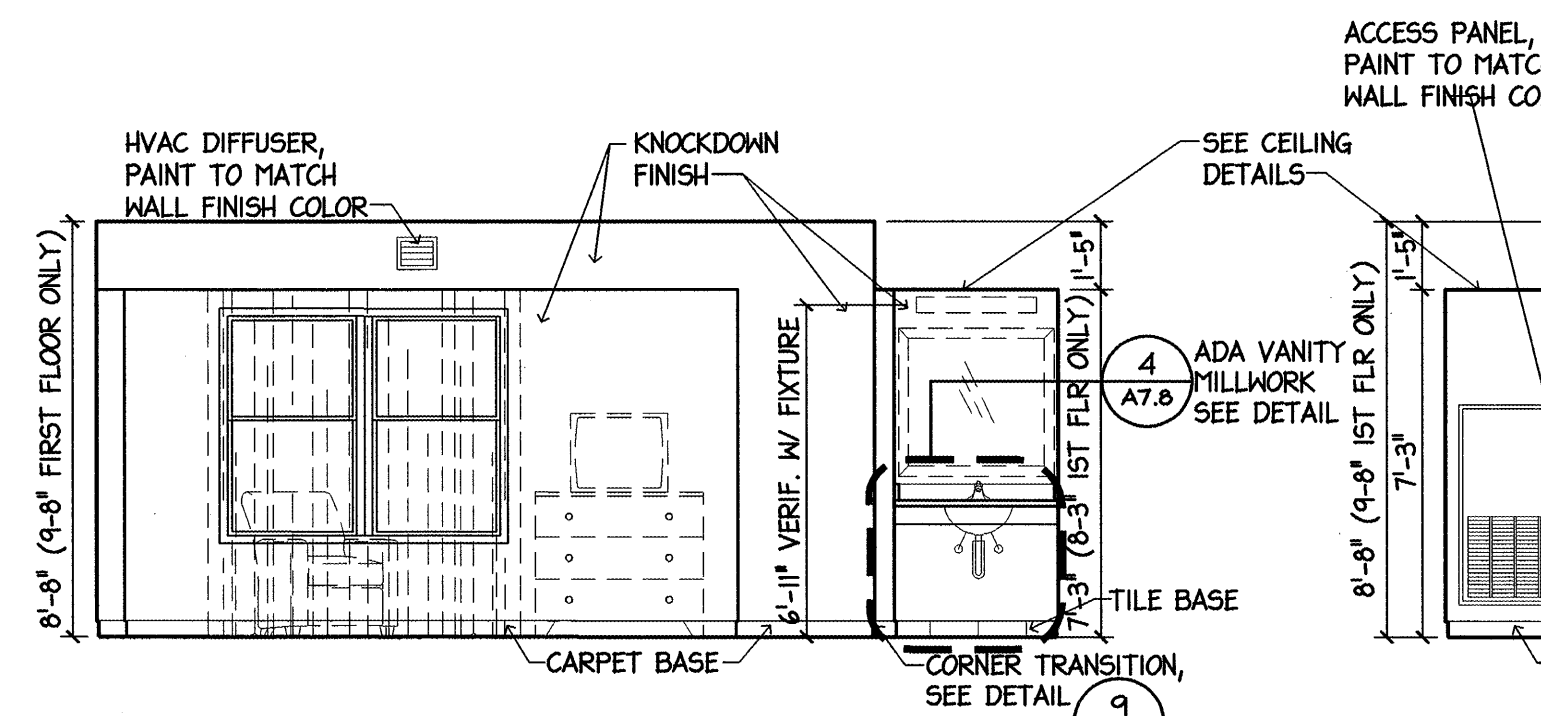


C 1 BEDROOM 3 ADA - ENLARGED REFLECTED CEILING PLAN
1/4" = 1'-0"

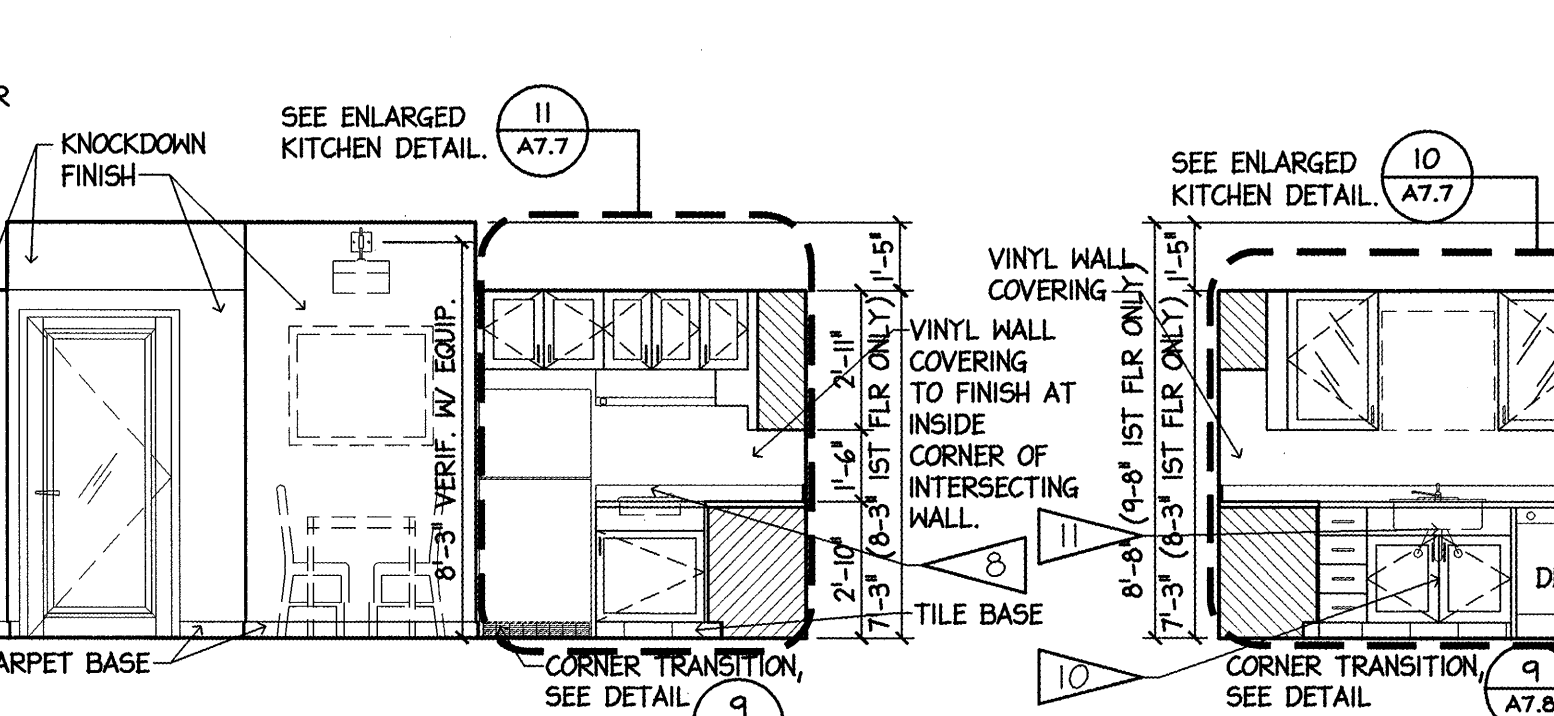


D SECOND & THIRD FLOOR ADA BATH PLAN
1/4" = 1'-0"

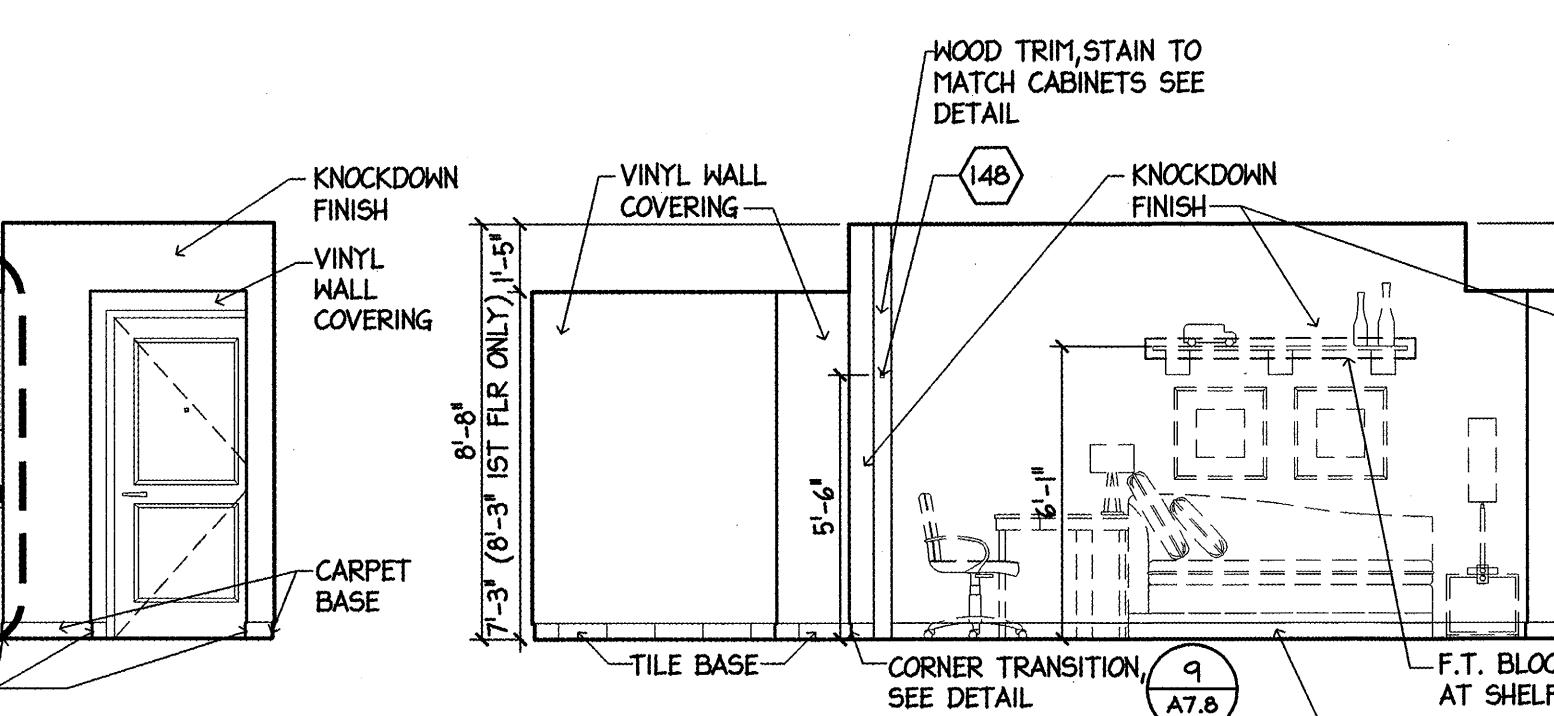
- CRITERIA NOTES**
- GANG DEVICES AT THIS LOCATION. REFER TO ELECTRICAL DRAWINGS.
 - MOUNT IRONING BOARD AND IRON RACK AT 72" AFF. PROVIDE BLOCKING AT WALL.
 - PROVIDE 3/4" PLYWOOD BLOCKING COVERED WITH GWS FOR VALENCE AND/OR DRAPERY HARDWARE INSTALLATION. EXTEND 7" MIN. BEYOND EACH SIDE OF WINDOW JAMB AND 12" FROM FACE OF WALL. COORDINATE BLOCKING WITH FF&E SPEC. VALENCE CONDITION AT FIRST FLOOR ONLY; SEE SPEC. VALENCE TO B E WALL MOUNTED AT
 - WIRE SHELF WITH ROD AT 60" AFF
 - WIRE SHELF WITH ROD AT 48" AFF. AND WITH SHELF STACK. (AT ACCESSIBLE ROOMS ONLY.)
 - SHOWER HEAD ROUGH-IN AT 6'-10" A.F.F. AND SHOWER ROD AT 6'-8" A.F.F.
 - PROVIDE WOOD CASING AROUND OPENING TO CLOSET - 1 1/4" x 1 1/4" V.I.F.
 - SET COOKTOP WITH CONTROLS AWAY FROM REFRIGERATOR.
 - BACK TO BACK OUTLETS TO BE IN SEPARATE STUD BAYS AND 2'-0" MIN. APART TYP. WHERE NOT POSSIBLE, PROVIDE FIRESTOPPING PUTTY PACK. NO BACK TO BACK OUTLETS.
 - CABINET DOORS SLIDE INTO CABINET WHEN FULLY OPENED IN ACCESSIBLE ROOMS ONLY. EXTEND FLOORING TO WALL BELOW CABINET OPEN TOE SPACE.
 - INSULATE EXPOSED HOT WATER PIPING AND DRAIN LINES.
 - CLEAR DIMENSIONS TO BE VERIFIED WITH FIXTURE OR EQUIPMENT MANUFACTURER SPECIFICATIONS.
 - AT ACCESSIBLE ROOMS AND HEARING IMPAIRED ROOMS ONLY.



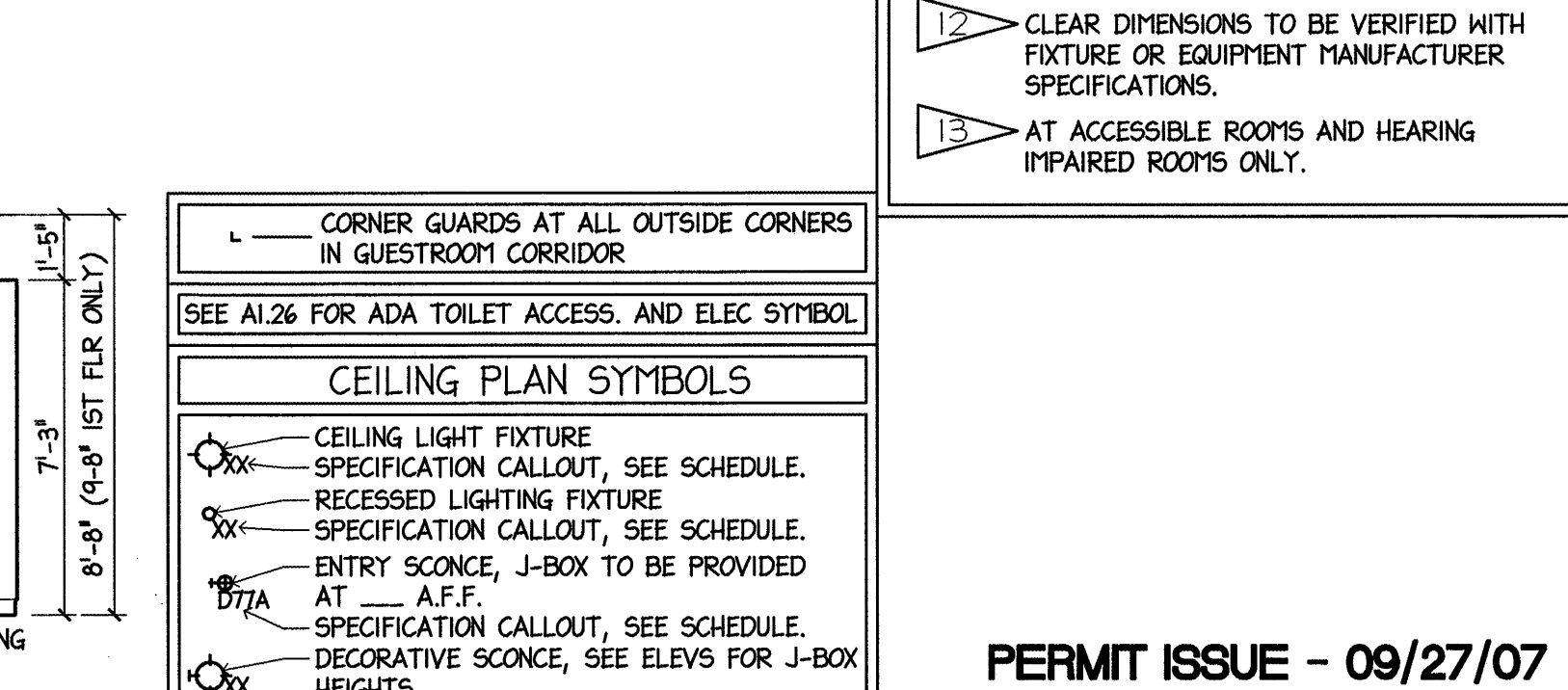
1 1 BEDROOM 3 ADA ELEVATION
1/4" = 1'-0"



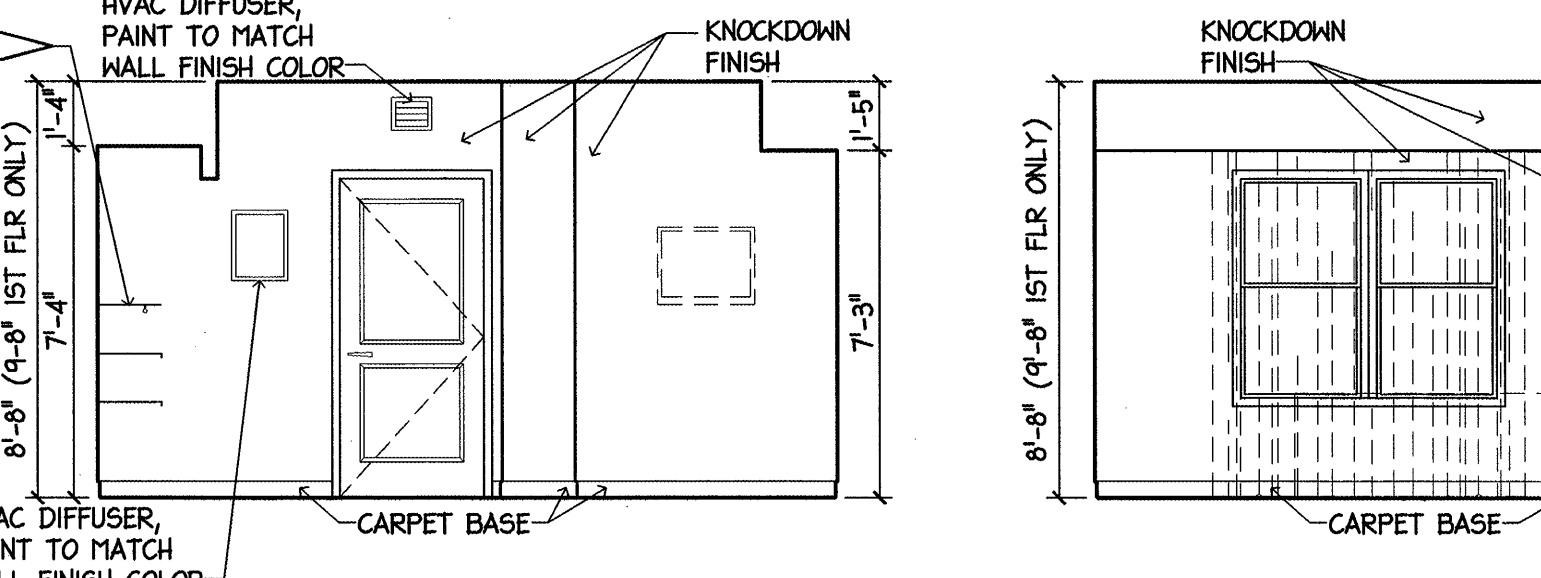
2 1 BEDROOM 3 ADA ELEVATION
1/4" = 1'-0"



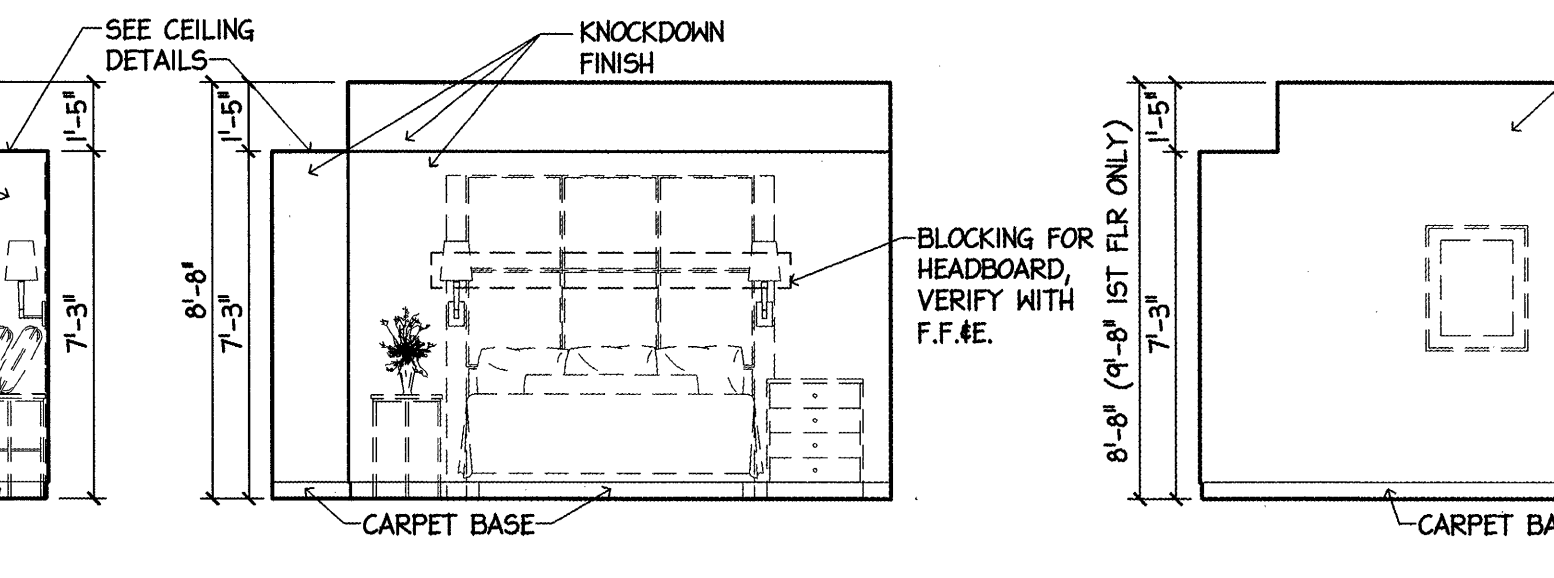
3 1 BEDROOM 3 ADA ELEVATION
1/4" = 1'-0"



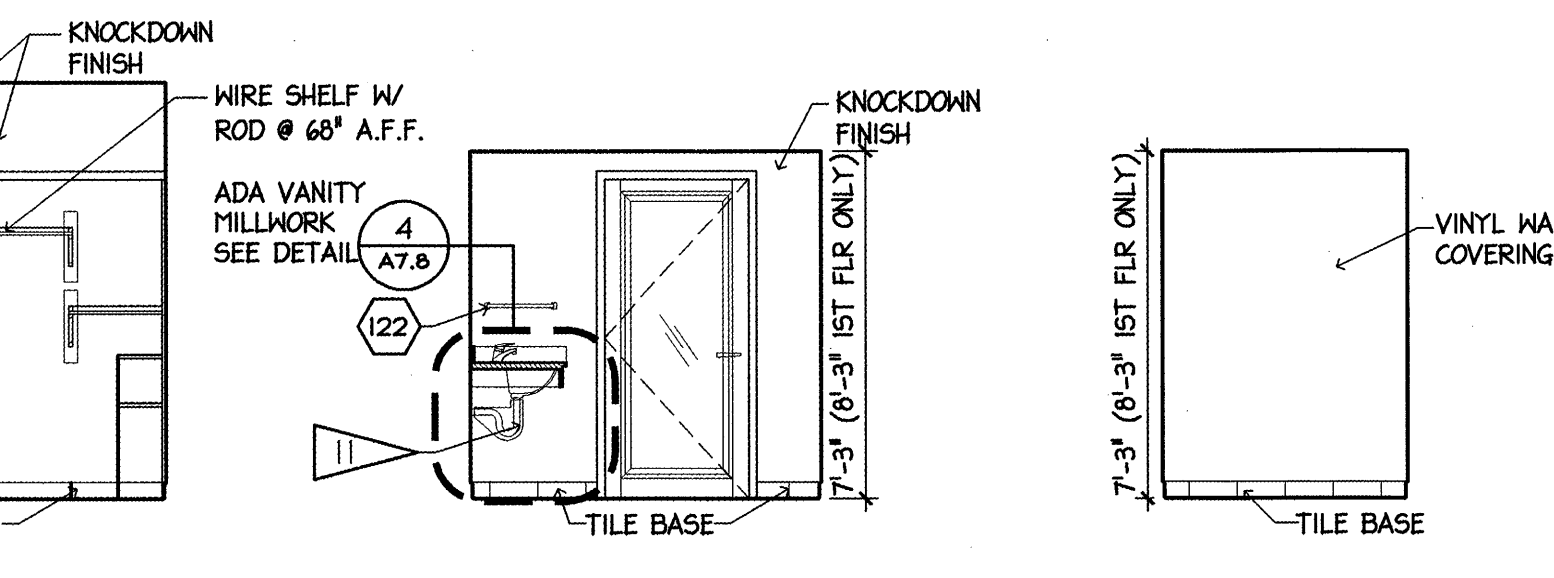
4 1 BEDROOM 3 ADA ELEVATION
1/4" = 1'-0"



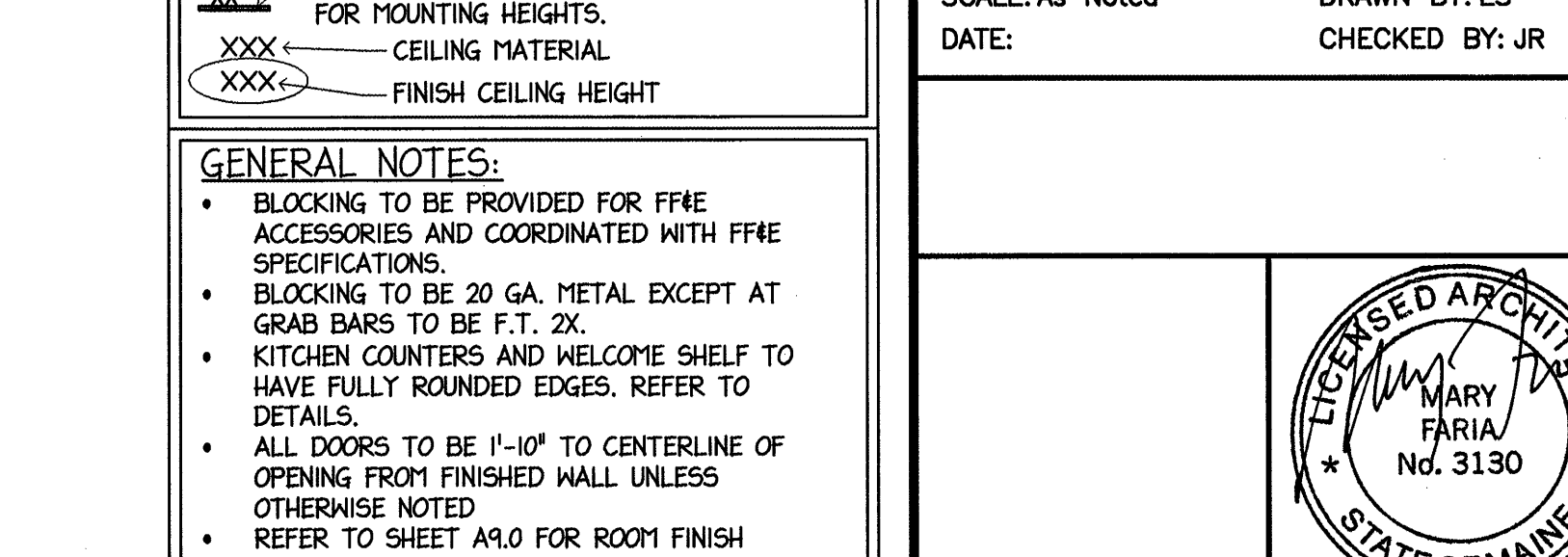
5 1 BEDROOM 3 ADA ELEVATION
1/4" = 1'-0"



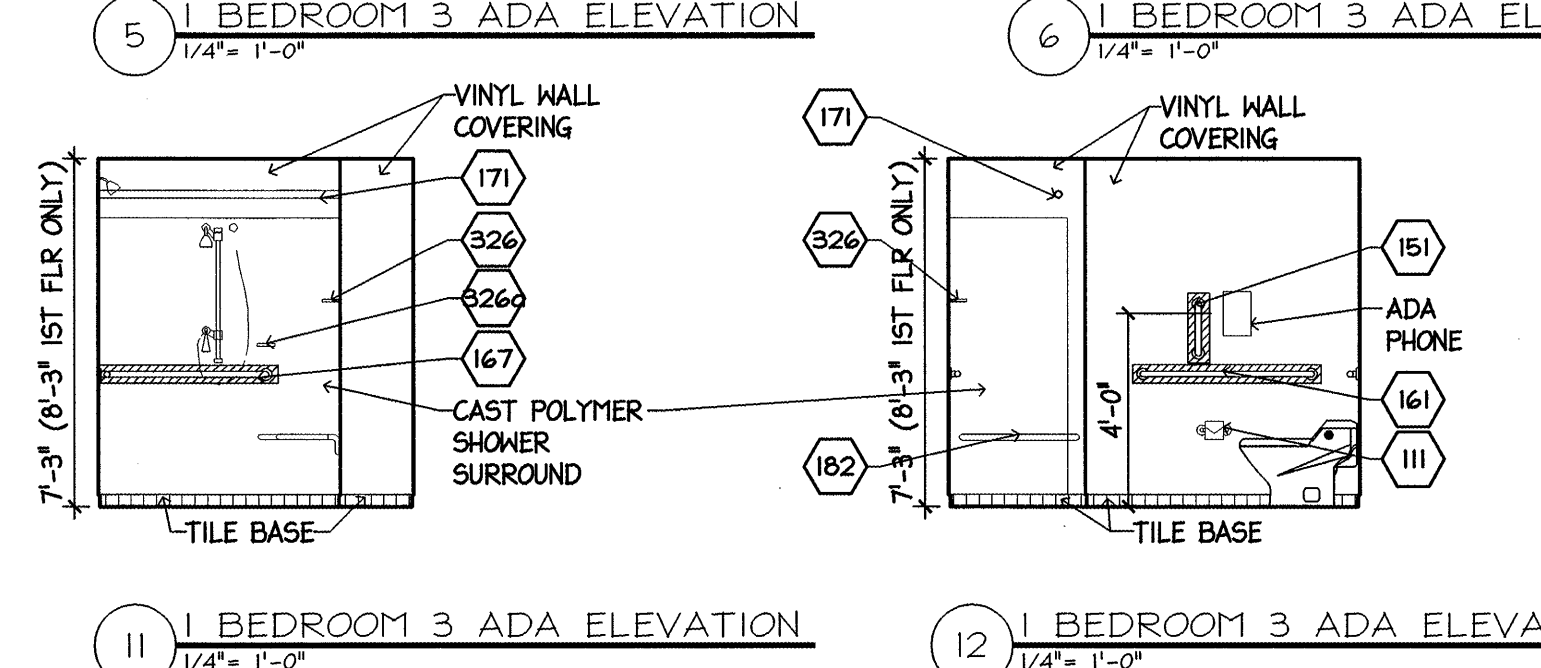
6 1 BEDROOM 3 ADA ELEVATION
1/4" = 1'-0"



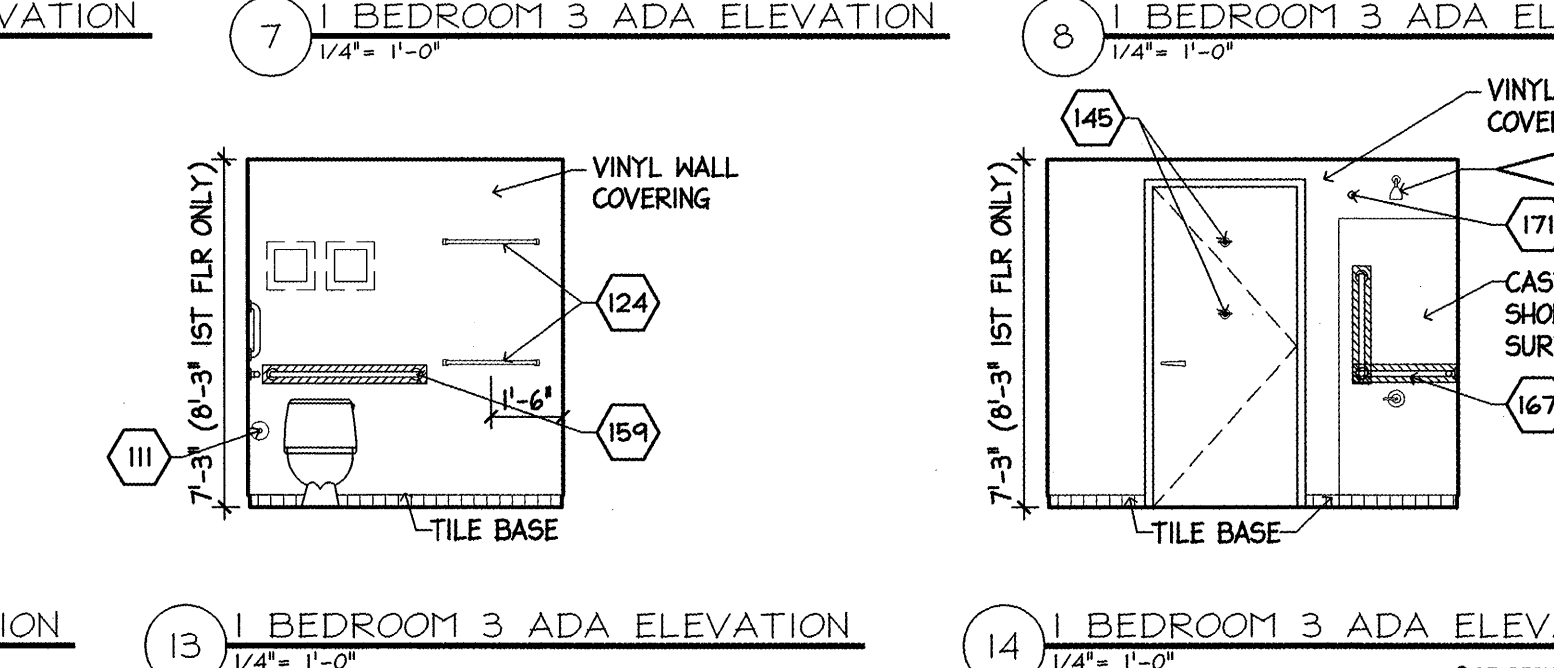
7 1 BEDROOM 3 ADA ELEVATION
1/4" = 1'-0"



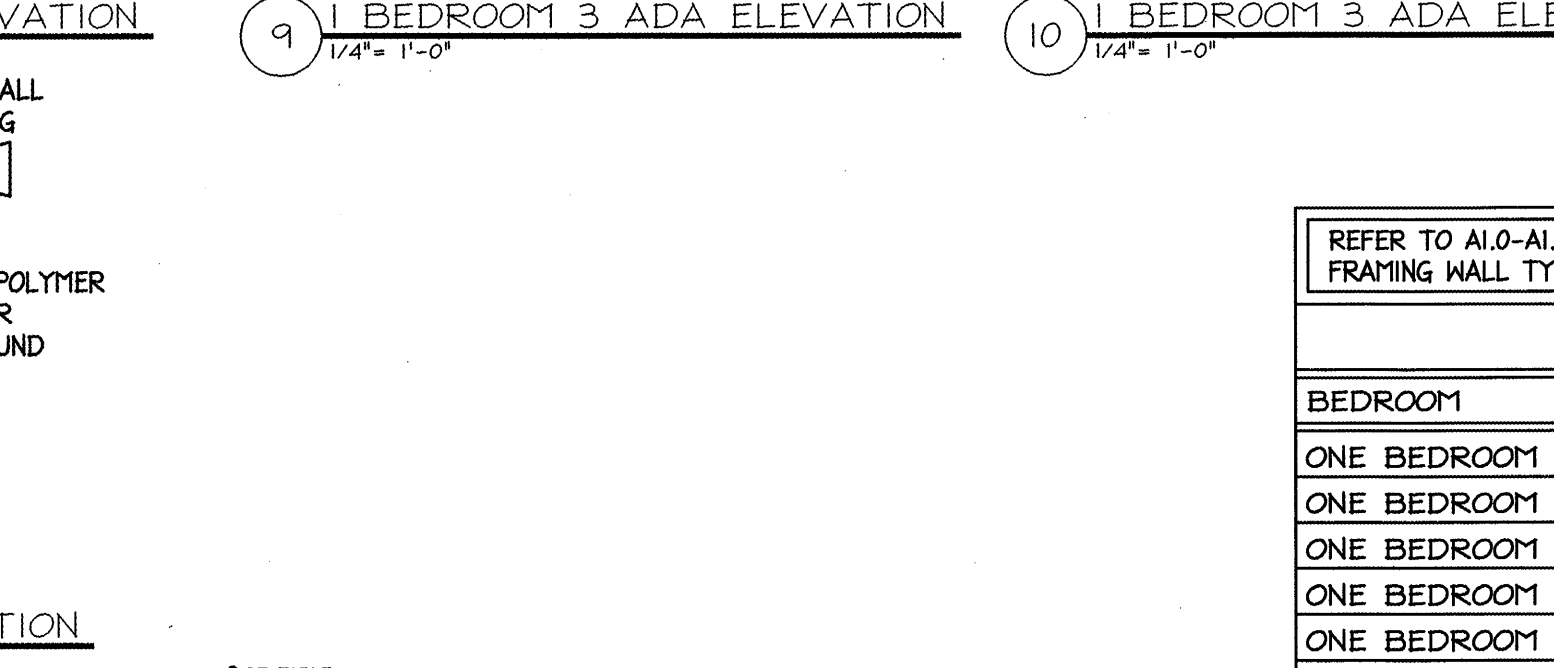
8 1 BEDROOM 3 ADA ELEVATION
1/4" = 1'-0"



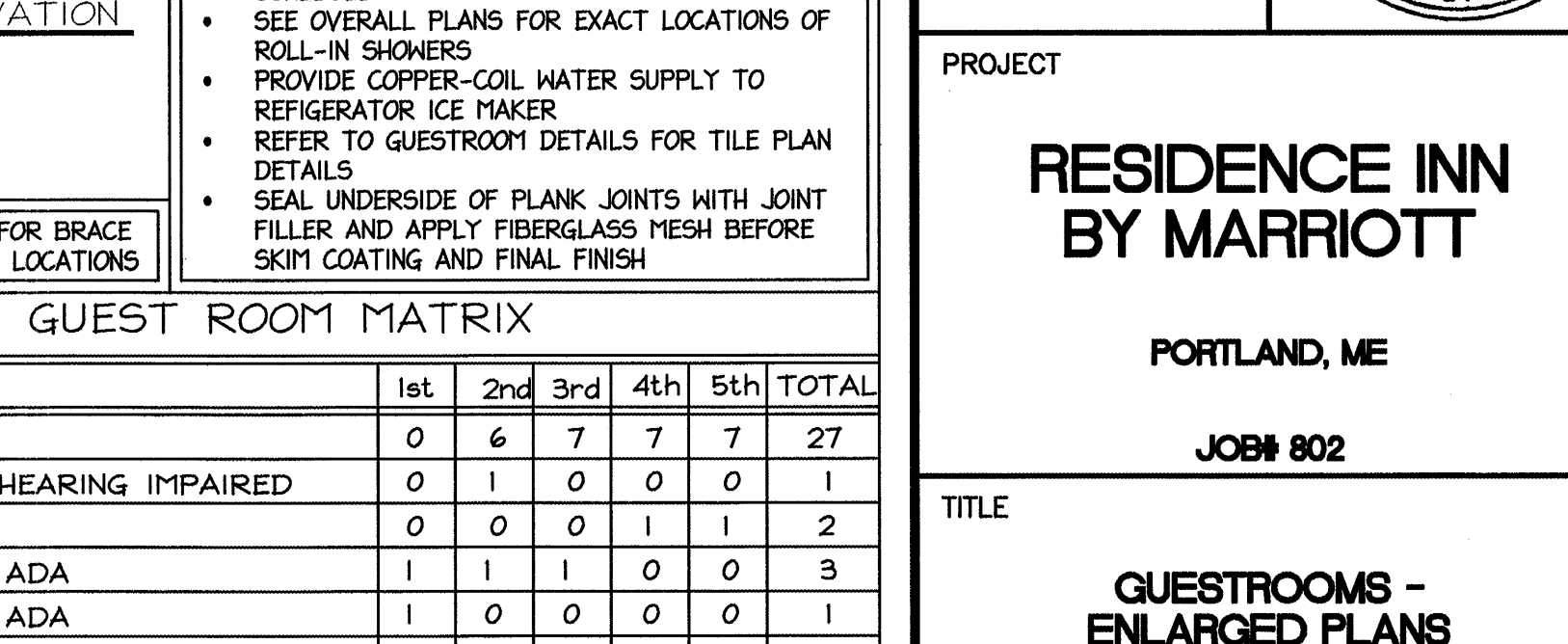
9 1 BEDROOM 3 ADA ELEVATION
1/4" = 1'-0"



10 1 BEDROOM 3 ADA ELEVATION
1/4" = 1'-0"



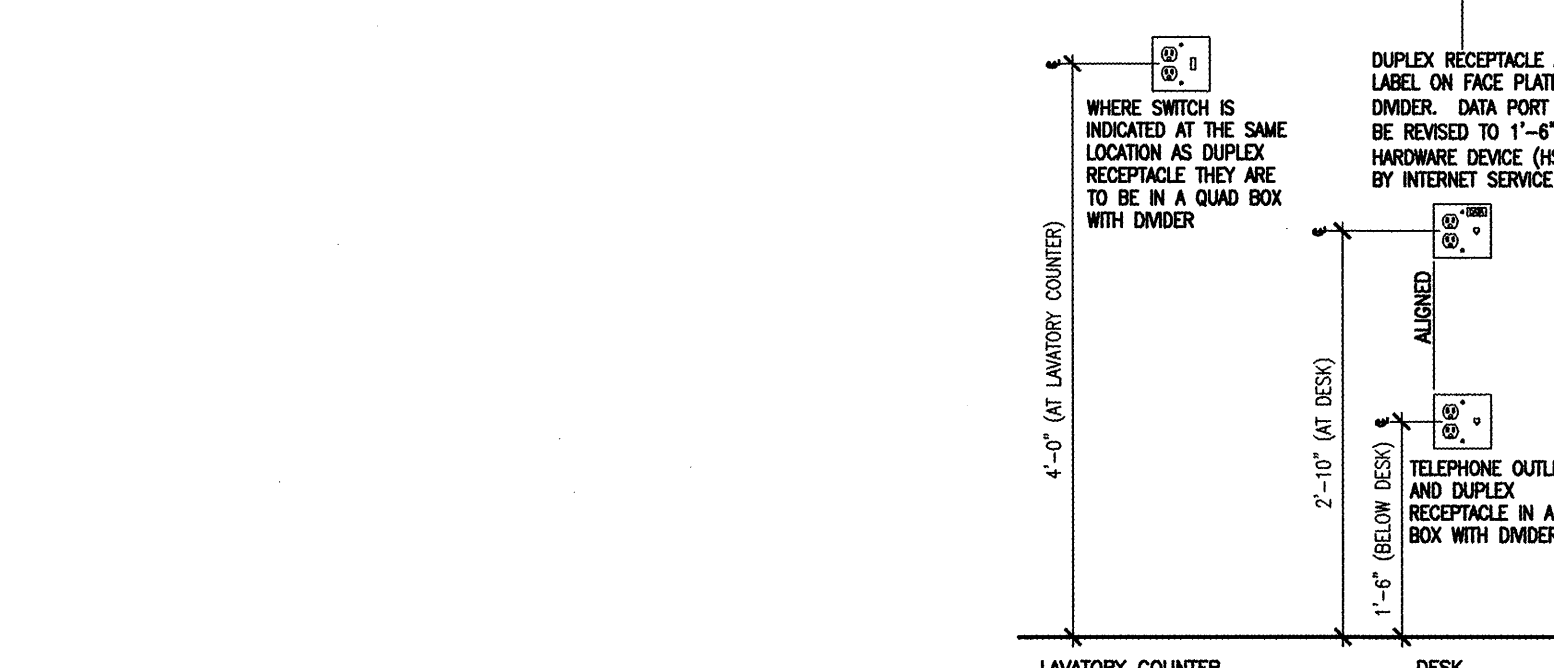
11 1 BEDROOM 3 ADA ELEVATION
1/4" = 1'-0"



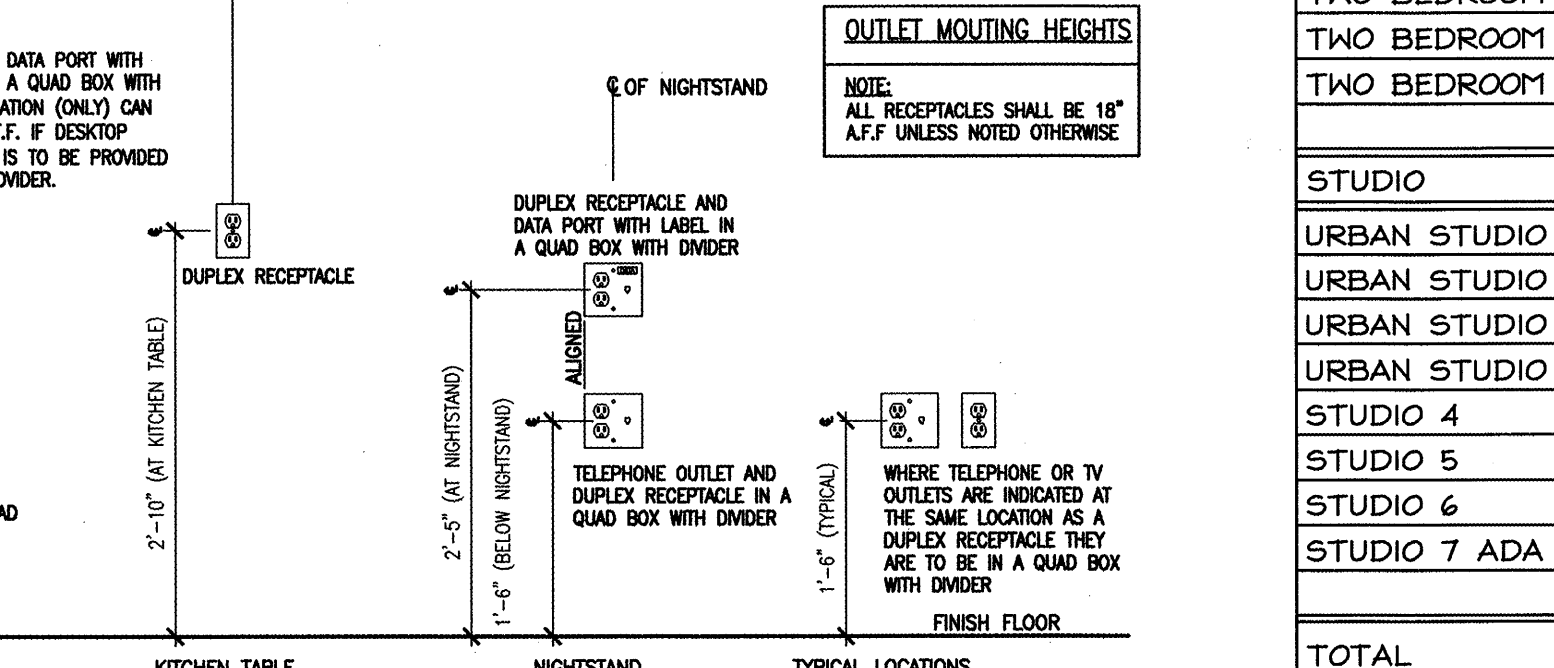
12 1 BEDROOM 3 ADA ELEVATION
1/4" = 1'-0"



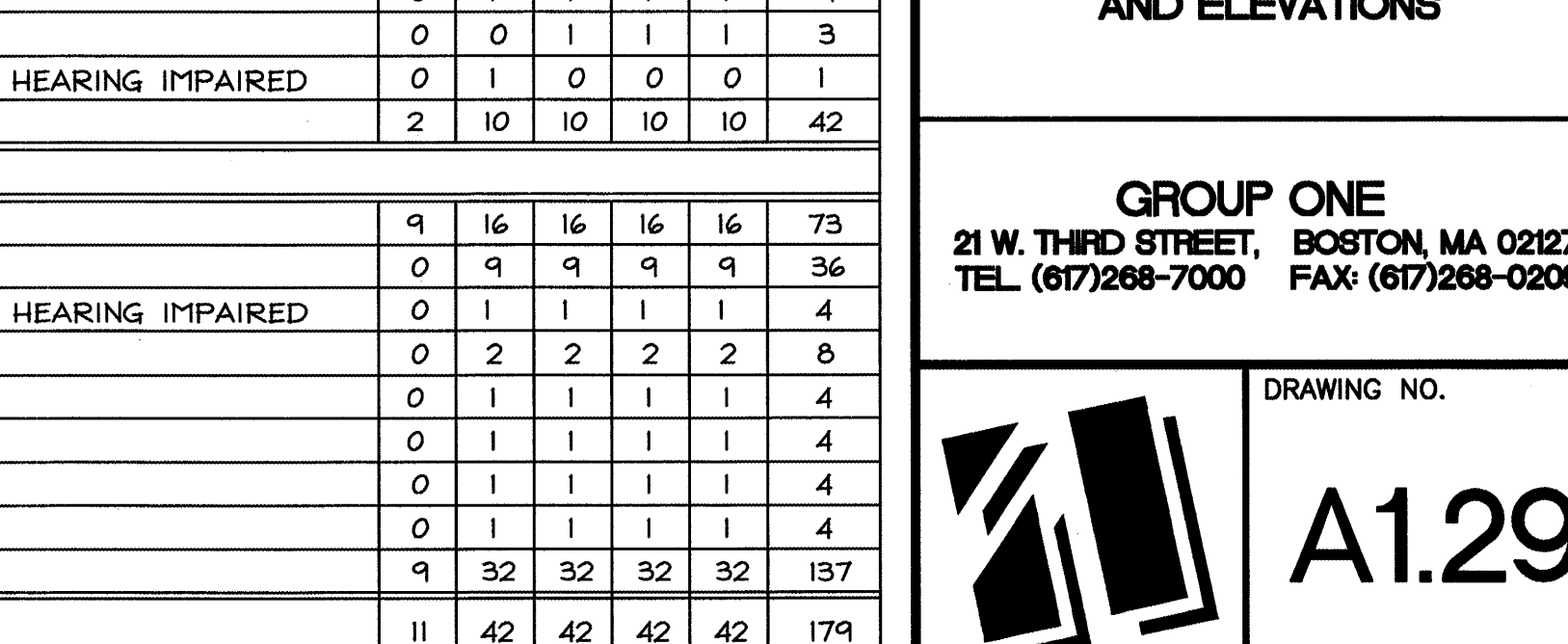
13 1 BEDROOM 3 ADA ELEVATION
1/4" = 1'-0"



14 1 BEDROOM 3 ADA ELEVATION
1/4" = 1'-0"



15 1 BEDROOM 3 ADA ELEVATION
1/4" = 1'-0"



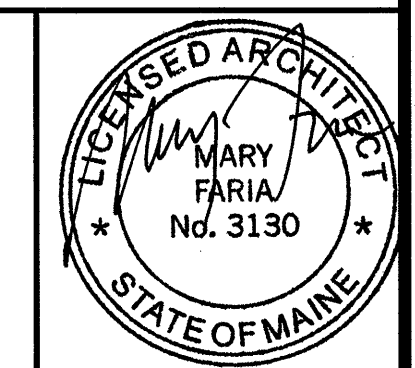
16 1 BEDROOM 3 ADA ELEVATION
1/4" = 1'-0"

- CEILING PLAN SYMBOLS**
- CEILING LIGHT FIXTURE SPECIFICATION CALLOUT, SEE SCHEDULE.
 - RECESSED LIGHTING FIXTURE SPECIFICATION CALLOUT, SEE SCHEDULE.
 - ENTRY SCONCE, J-BOX TO BE PROVIDED AT - A.F.F.
 - SPECIFICATION CALLOUT, SEE SCHEDULE.
 - DECORATIVE SCONCE, SEE ELEVS FOR J-BOX HEIGHTS
 - SPECIFICATION CALLOUT, SEE SCHEDULE.
 - DECORATIVE BATH WALL LIGHT. SEE ELEVS FOR MOUNTING HEIGHTS.
 - CEILING MATERIAL
 - FINISH CEILING HEIGHT

- GENERAL NOTES:**
- BLOCKING TO BE PROVIDED FOR FF&E ACCESSORIES AND COORDINATED WITH FF&E SPECIFICATIONS.
 - BLOCKING TO BE 20 GA. METAL EXCEPT AT GRAB BARS TO BE F.T. 2X.
 - KITCHEN COUNTERTOPS AND WELCOME SHELF TO HAVE FULLY ROUNDED EDGES. REFER TO DETAILS.
 - ALL DOORS TO BE 1'-10" TO CENTERLINE OF OPENING FROM FINISHED WALL UNLESS OTHERWISE NOTED
 - REFER TO SHEET A9.0 FOR ROOM FINISH SCHEDULE
 - SEE OVERALL PLANS FOR EXACT LOCATIONS OF ROLL-IN SHOWERS
 - PROVIDE COPPER-COIL WATER SUPPLY TO REFRIGERATOR ICE MAKER
 - REFER TO GUESTROOM DETAILS FOR TILE PLAN DETAILS
 - SEAL UNDERSIDE OF PLANK JOINTS WITH JOINT FILLER AND APPLY FIBERGLASS MESH BEFORE SKIM COATING AND FINAL FINISH

PERMIT ISSUE - 09/27/07

NO.	REVISION	DATE
SCALE: As Noted		DRAWN BY: ES
DATE:		CHECKED BY: JR



PROJECT

RESIDENCE INN BY MARRIOTT

PORTLAND, ME

JOHN 802

TITLE
GUESTROOMS - ENLARGED PLANS AND ELEVATIONS

GROUP ONE
21 W. THIRD STREET, BOSTON, MA 02127
TEL: (617)268-7000 FAX: (617)268-0209

DRAWING NO.

A1.29

REFER TO A1.0-A1.2 FOR BRACE FRAMING WALL TYPE LOCATIONS

GUEST ROOM MATRIX

BEDROOM	1st	2nd	3rd	4th	5th	TOTAL
ONE BEDROOM 1	0	6	7	7	7	27
ONE BEDROOM 1 HEARING IMPAIRED	0	1	0	0	0	1
ONE BEDROOM 2	0	0	0	1	1	2
ONE BEDROOM 3 ADA	1	1	1	0	0	3
ONE BEDROOM 4 ADA	1	0	0	0	0	1
TWO BEDROOM 1	0	1	1	1	1	4
TWO BEDROOM 2	0	0	1	1	1	3
TWO BEDROOM 2 HEARING IMPAIRED	0	1	0	0	0	1
	2	10	10	10	10	42
STUDIO						
URBAN STUDIO 1	9	16	16	16	16	73
URBAN STUDIO 2	0	9	9	9	9	36
URBAN STUDIO 2 HEARING IMPAIRED	0	1	1	1	1	4
URBAN STUDIO 3	0	2	2	2	2	8
STUDIO 4	0	1	1	1	1	4
STUDIO 5	0	1	1	1	1	4
STUDIO 6	0	1	1	1	1	4
STUDIO 7 ADA	0	1	1	1	1	4
	9	32	32	32	32	137
TOTAL	11	42	42	42	42	179

OUTLET MOUNTING HEIGHTS

