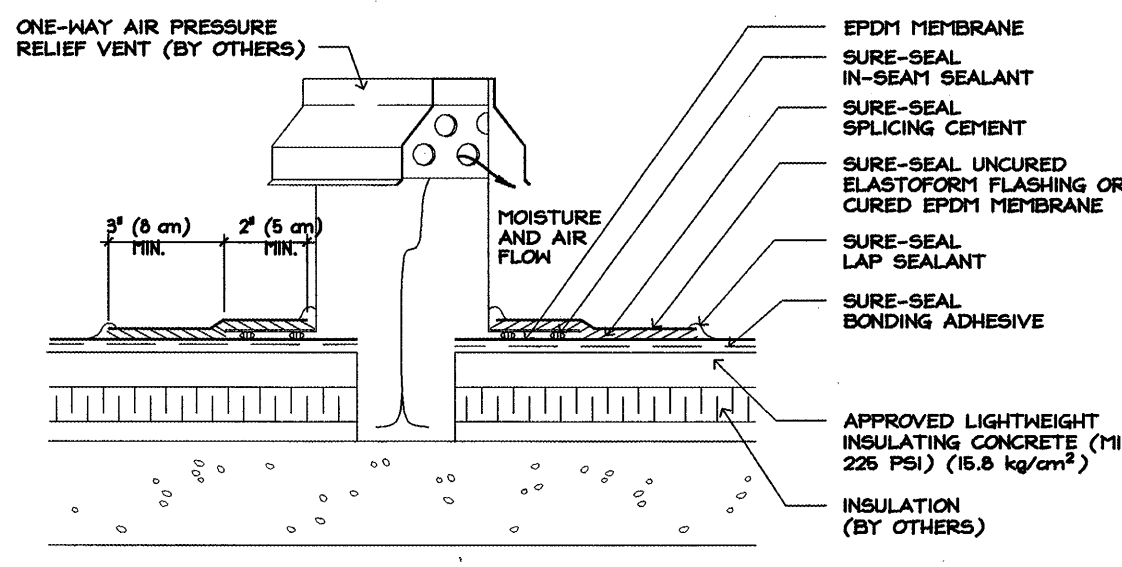
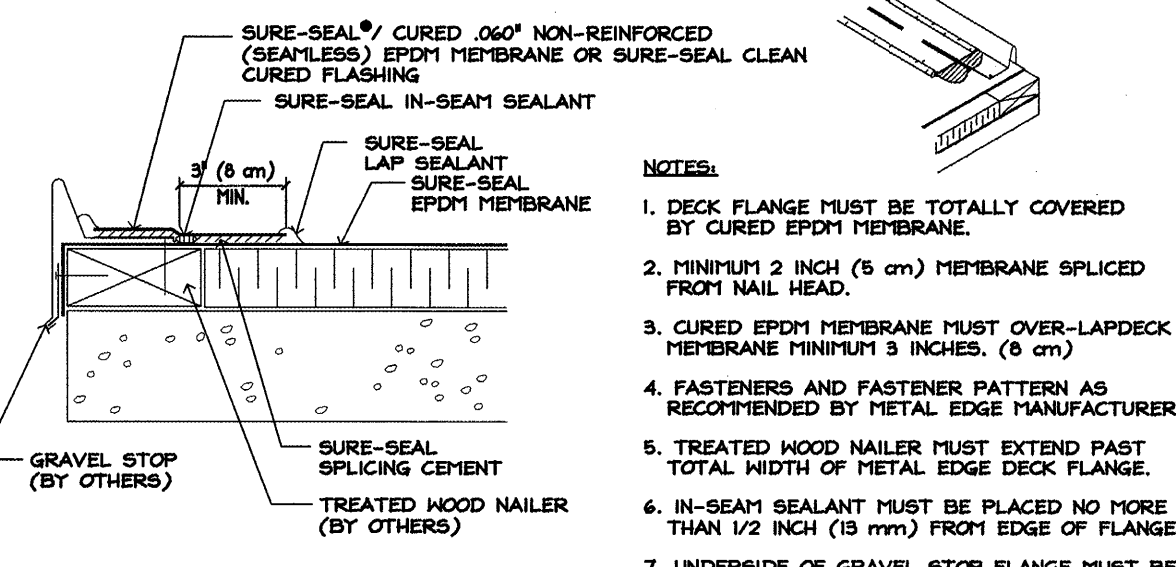


MEMBRANE ROOFING DETAILS



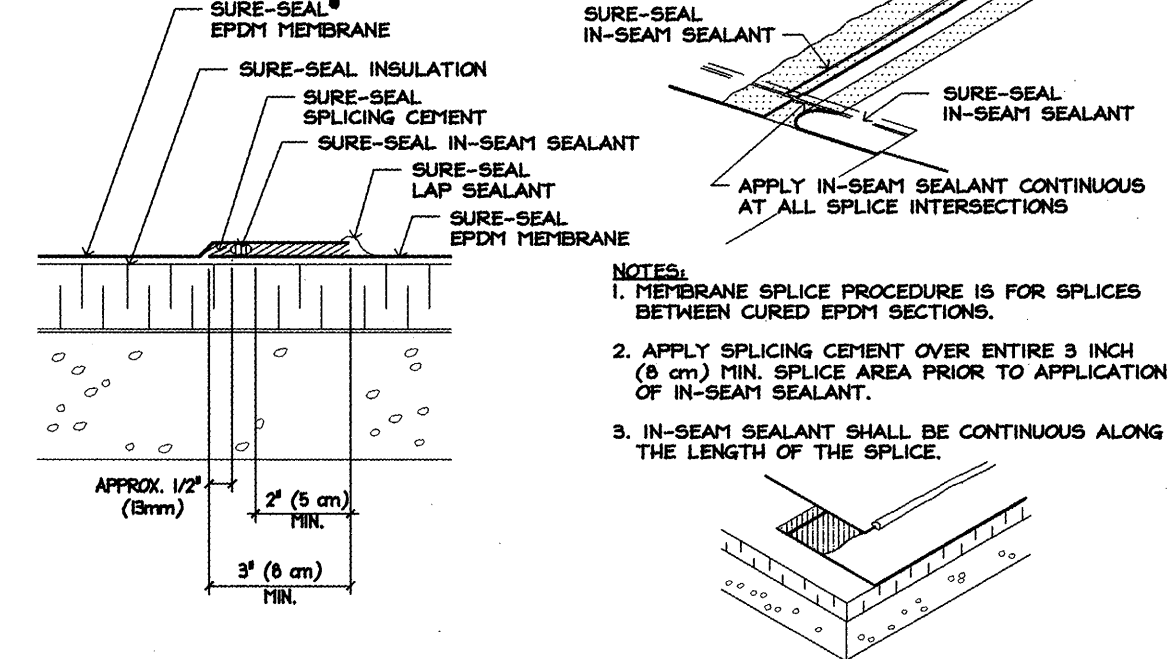
- NOTES:**
1. CONTACT CARLISLE FOR ACCEPTABLE PRESSURE RELIEF VENT.
 2. POSITION VENT AT THE RATE OF ONE VENT PER 2000 SQ. FT. (186 m²).

A ONE-WAY AIR PRESSURE RELIEF VENT
N.T.S.



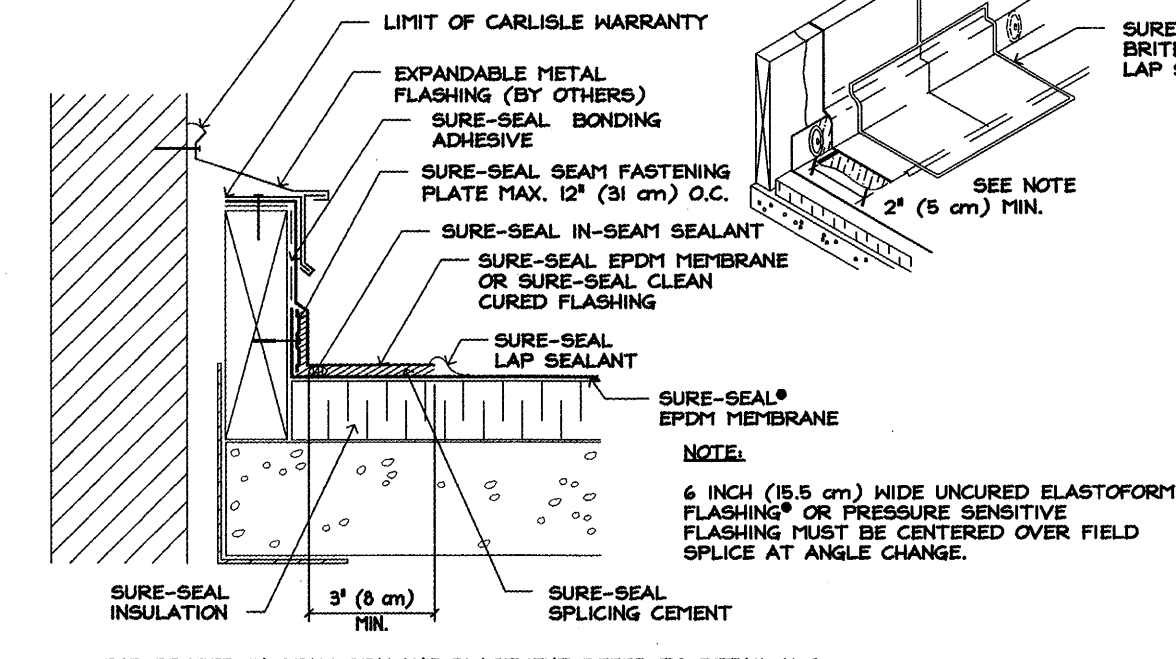
- NOTES:**
1. DECK FLANGE MUST BE TOTALLY COVERED BY CURED EPDM MEMBRANE.
 2. MINIMUM 2 INCH (5 cm) MEMBRANE SPLICE FROM NAIL HEAD.
 3. CURED EPDM MEMBRANE MUST OVER-LAP DECK MEMBRANE FINISH 3 INCHES (8 cm).
 4. FASTENERS AND FASTENER PATTERN AS RECOMMENDED BY METAL EDGE MANUFACTURER.
 5. TREATED WOOD NAILER MUST EXTEND PAST TOTAL WIDTH OF METAL EDGE DECK FLANGE.
 6. IN-SEAM SEALANT MUST BE PLACED NO MORE THAN 1/2 INCH (13 mm) FROM EDGE OF FLANGE.
 7. UNDERSIDE OF GRAVEL STOP FLANGE MUST BE SEALED AT ALL JOINTS. CONSULT RESPECTIVE MANUFACTURER FOR APPROPRIATE SEALANT.
 8. GRAVEL STOP MUST EXTEND ABOVE GRAVEL SURFACE SUFFICIENTLY TO RETAIN GRAVEL, AND PREVENT GRAVEL MIGRATION FOR BALLASTED ROOFING SYSTEMS.

B METAL EDGE TERMINATION
N.T.S.



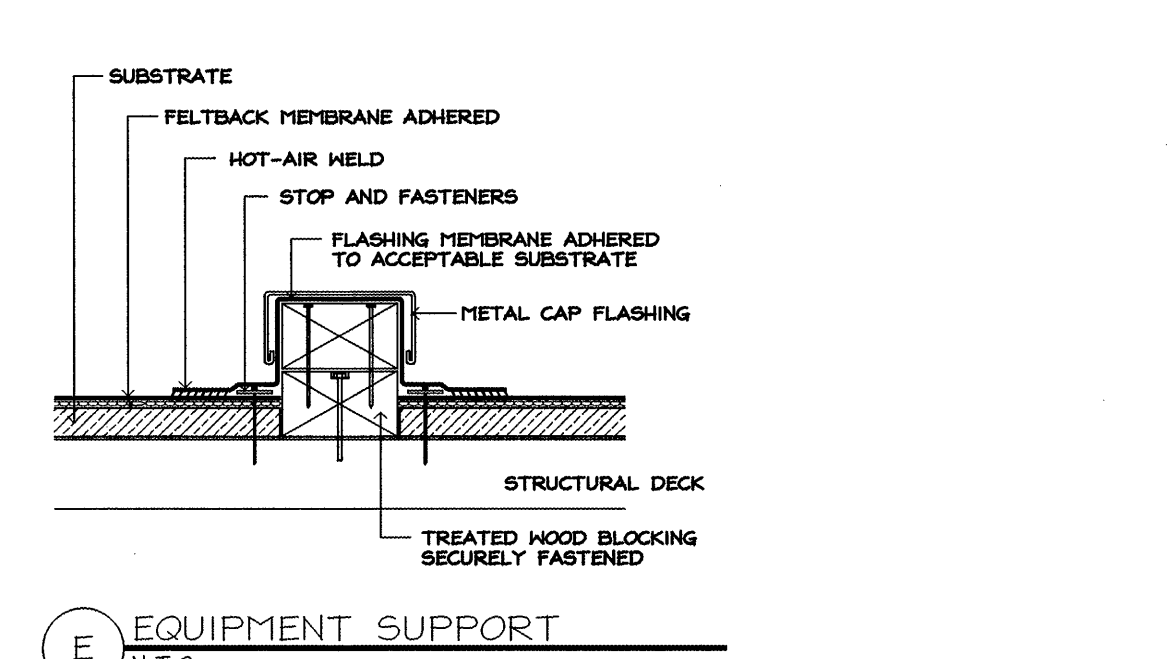
- NOTES:**
1. MEMBRANE SPLICE PROCEDURE IS FOR SPLICES BETWEEN CURED EPDM SECTIONS.
 2. APPLY SPLICING CEMENT OVER ENTIRE 3 INCH (8 cm) MIN. SPLICE AREA PRIOR TO APPLICATION OF IN-SEAM SEALANT.
 3. IN-SEAM SEALANT SHALL BE CONTINUOUS ALONG THE LENGTH OF THE SPLICE.

C MEMBRANE SPLICE
N.T.S.

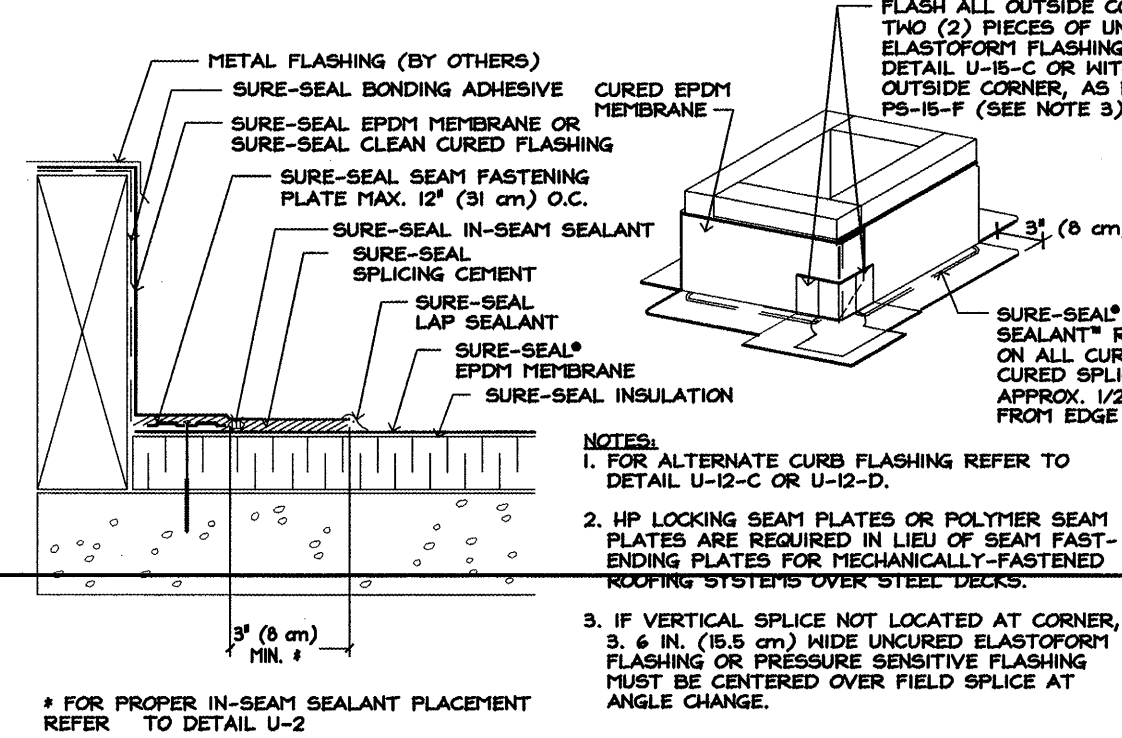


- NOTES:**
1. REMOVE ALL LEAD AND OTHER FLASHING.
 2. PRE-MOLDED PIPE SEAL MUST HAVE INTACT RIB AT TOP EDGE, REGARDLESS OF PIPE DIAMETER.
 3. APPLY IN-SEAM SEALANT 1/2 INCH (13 mm) FROM INSIDE EDGE OF PIPE SEAL FLANGE.
 4. DECK FLANGES OF THE PRE-MOLDED PIPE FLASHING SHALL NOT BE OVERLAPPED, CUT OR APPLIED OVER ANY ANGLE CHANGE.

D SHEAR AND EXPANSION COVER
N.T.S.

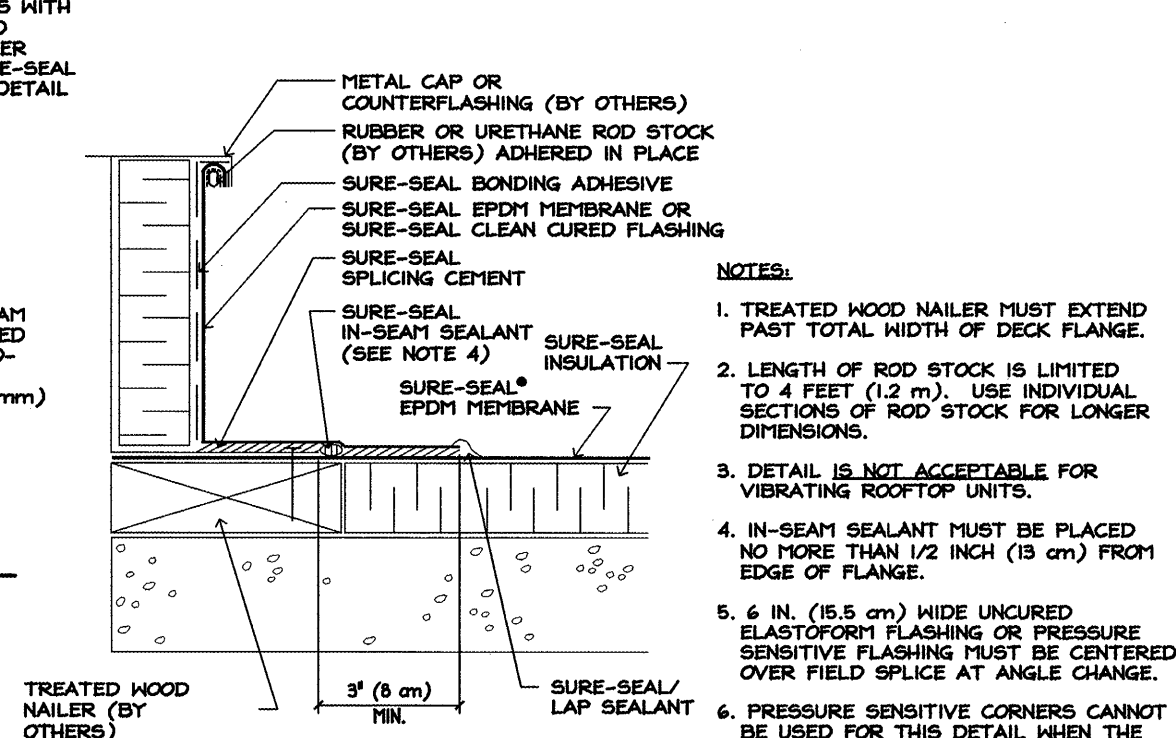


E EQUIPMENT SUPPORT
N.T.S.



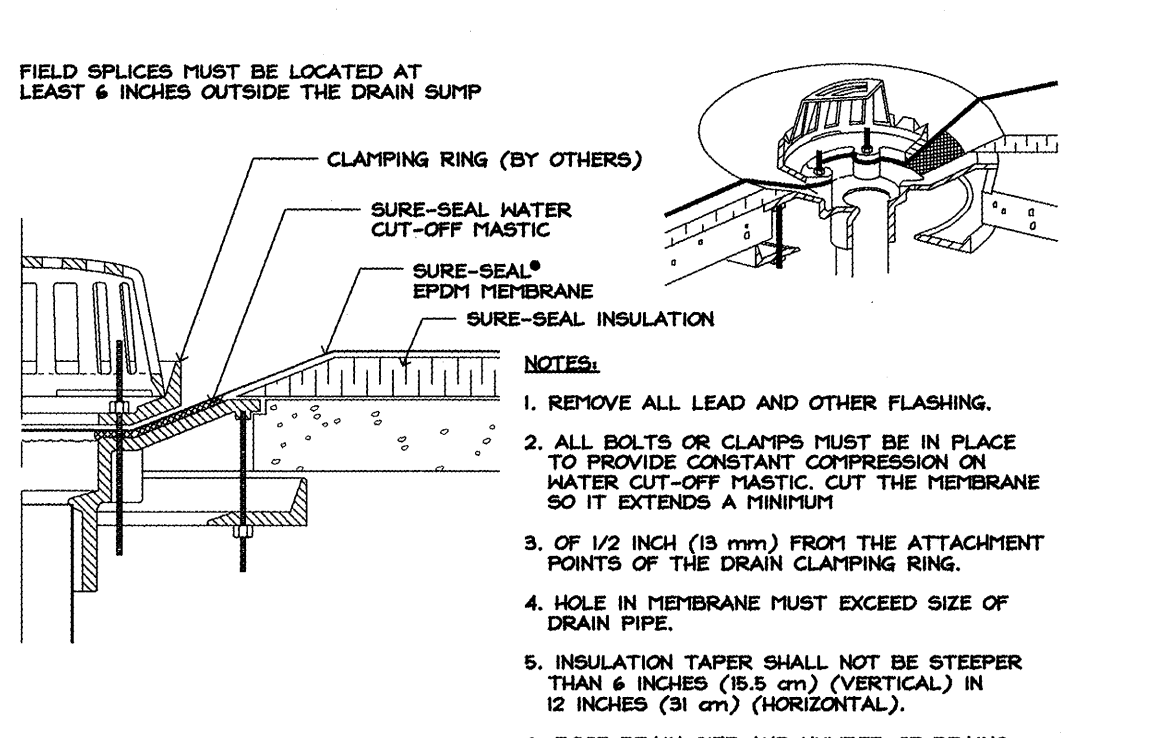
- NOTES:**
1. FOR ALTERNATE CURB FLASHING REFER TO DETAIL U-12-C OR U-12-D.
 2. HP LOCKING SEAM PLATES OR POLYMER SEAM PLATES ARE REQUIRED IN LIEU OF SEAM FASTENING PLATES FOR MECHANICALLY-FASTENED ROOFING SYSTEMS OVER STEEL DECKS.
 3. IF VERTICAL SPLICE NOT LOCATED AT CORNER, 3 & 4 IN. (76.5 cm) WIDE UNCURD ELASTOFORF FLASHING OR PRESSURE SENSITIVE FLASHING MUST BE CENTERED OVER FIELD SPLICE AT ANGLE CHANGE.

G CURB FLASHING
N.T.S.



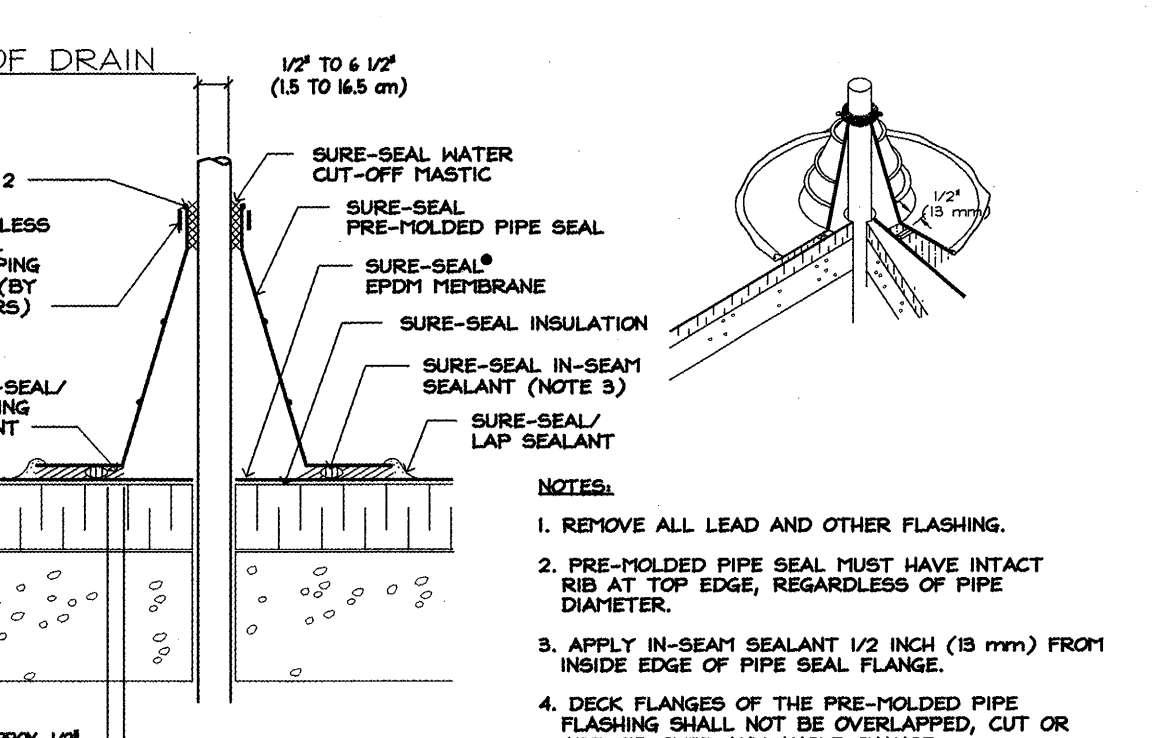
- NOTES:**
1. TREATED WOOD NAILER MUST EXTEND PAST TOTAL WIDTH OF DECK FLANGE.
 2. LENGTH OF ROD STOCK IS LIMITED TO 4 FEET (1.2 m). USE INDIVIDUAL SECTIONS OF ROD STOCK FOR LONGER DIMENSIONS.
 3. DETAIL IS NOT ACCEPTABLE FOR VIBRATING ROOFTOP UNITS.
 4. IN-SEAM SEALANT MUST BE PLACED NO MORE THAN 1/2 INCH (13 mm) FROM EDGE OF FLANGE.
 5. 4 IN. (10.5 cm) WIDE UNCURD ELASTOFORF FLASHING OR PRESSURE SENSITIVE FLASHING MUST BE CENTERED OVER FIELD SPLICE AT ANGLE CHANGE.
 6. PRESSURE SENSITIVE CORNERS CANNOT BE USED FOR THIS DETAIL WHEN THE FLANGE IS LOCATED ON TOP OF THE MEMBRANE DUE TO INCOMPLETE COVERAGE OF THE METAL FLANGE AT CORNERS.

H SELF-FLASHING CURB
N.T.S.



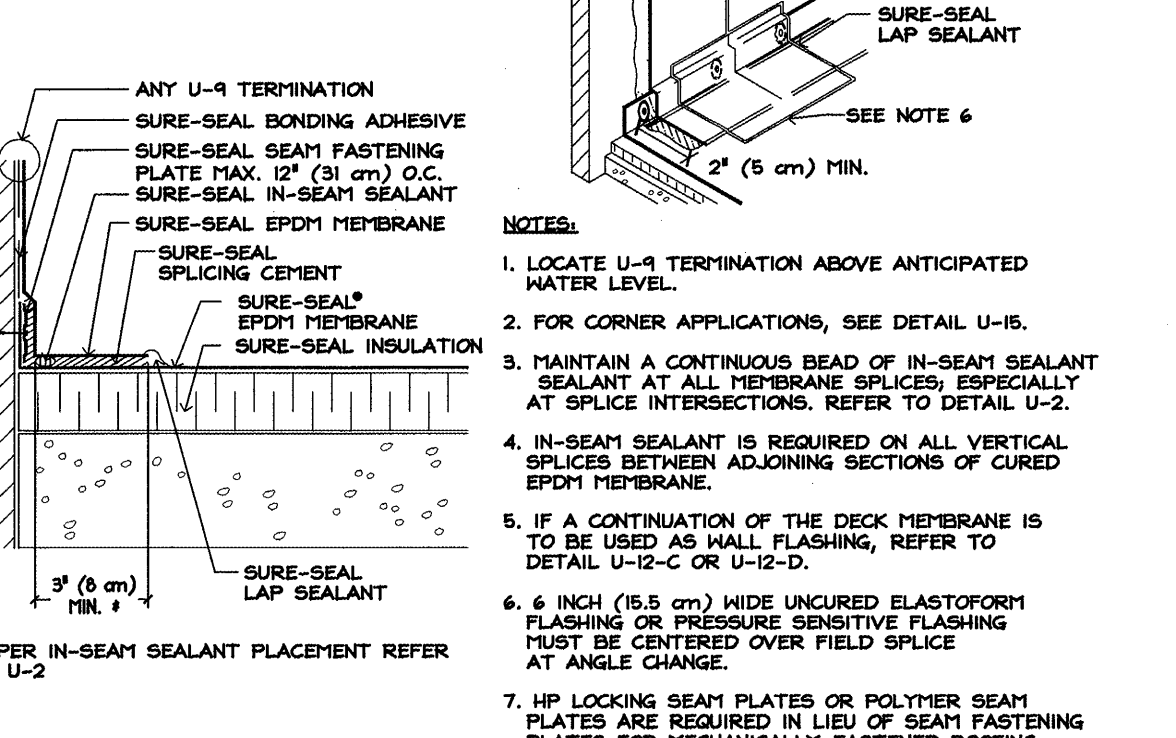
- NOTES:**
1. REMOVE ALL LEAD AND OTHER FLASHING.
 2. ALL BOLTS OR CLAMPS MUST BE IN PLACE TO PROVIDE CONSTANT COMPRESSION ON WATER CUT-OFF MASTIC. CUT THE MEMBRANE SO IT EXTENDS A MINIMUM.
 3. OF 1/2 INCH (13 mm) FROM THE ATTACHMENT POINTS OF THE DRAIN CLAMPING RING.
 4. HOLE IN MEMBRANE MUST EXCEED SIZE OF DRAIN PIPE.
 5. INSULATION TAPER SHALL NOT BE STEEPER THAN 6 INCHES (15.5 cm) (VERTICAL) IN 12 INCHES (31 cm) (HORIZONTAL).
 6. ROOF DRAIN SIZE AND NUMBER OF DRAINS SHALL BE IN ACCORDANCE WITH LOCAL CODES.

I ROOF DRAIN
N.T.S.



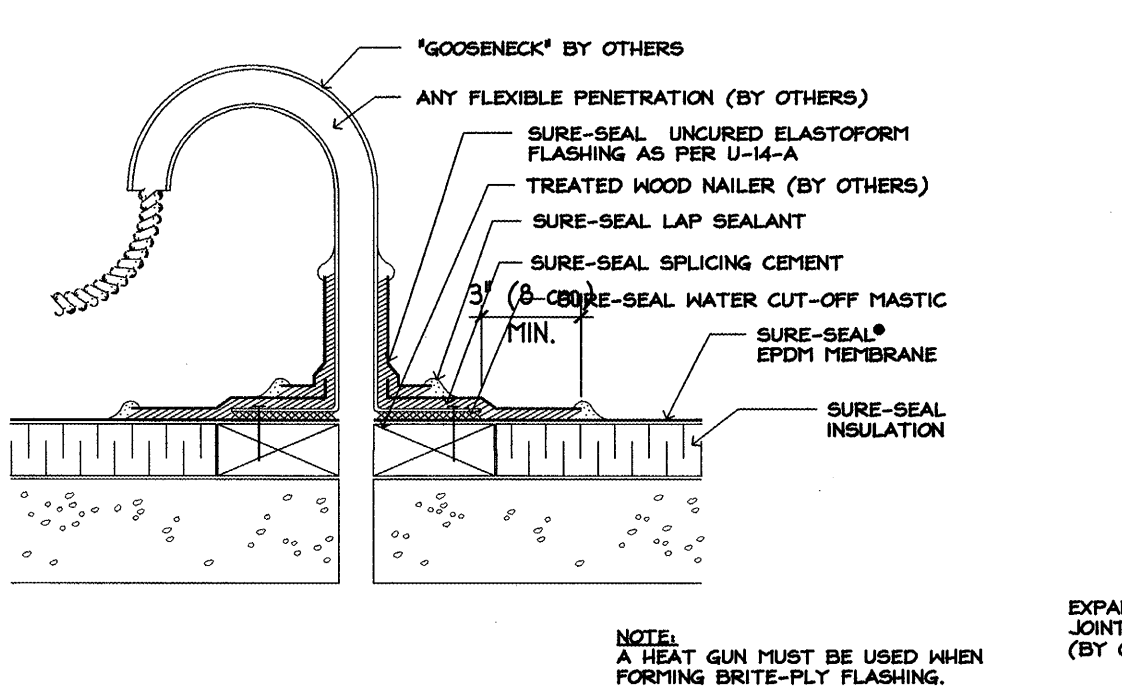
- NOTES:**
1. REMOVE ALL LEAD AND OTHER FLASHING.
 2. PRE-MOLDED PIPE SEAL MUST HAVE INTACT RIB AT TOP EDGE, REGARDLESS OF PIPE DIAMETER.
 3. APPLY IN-SEAM SEALANT 1/2 INCH (13 mm) FROM INSIDE EDGE OF PIPE SEAL FLANGE.
 4. DECK FLANGES OF THE PRE-MOLDED PIPE FLASHING SHALL NOT BE OVERLAPPED, CUT OR APPLIED OVER ANY ANGLE CHANGE.

J PREMOLDED VENT PIPE FLASHING
N.T.S.



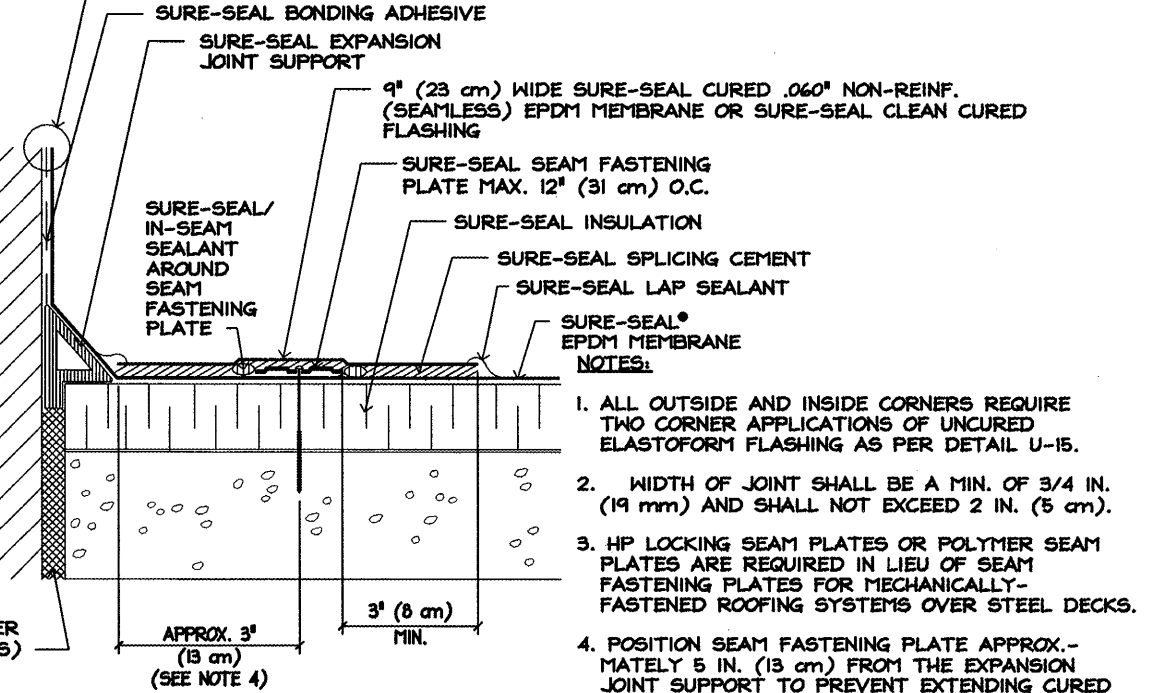
- NOTES:**
1. LOCATE U-9 TERMINATION ABOVE ANTICIPATED WATER LEVEL.
 2. FOR CORNER APPLICATIONS, SEE DETAIL U-15.
 3. MAINTAIN A CONTINUOUS BEAD OF IN-SEAM SEALANT AT ALL MEMBRANE SPLICES, ESPECIALLY AT SPLICE INTERSECTIONS. REFER TO DETAIL U-2.
 4. IN-SEAM SEALANT IS REQUIRED ON ALL VERTICAL SPLICES BETWEEN ADJOINING SECTIONS OF CURED EPDM MEMBRANE.
 5. IF A CONTINUATION OF THE DECK MEMBRANE IS TO BE USED AS WALL FLASHING, REFER TO DETAIL U-12-C OR U-12-D.
 6. 4 INCH (10.5 cm) WIDE UNCURD ELASTOFORF FLASHING OR PRESSURE SENSITIVE FLASHING MUST BE CENTERED OVER FIELD SPLICE AT ANGLE CHANGE.
 7. HP LOCKING SEAM PLATES OR POLYMER SEAM PLATES ARE REQUIRED IN LIEU OF SEAM FASTENING PLATES FOR MECHANICALLY-FASTENED ROOFING SYSTEMS OVER STEEL DECKS.

K PARAPET/CURB CURED EPDM
N.T.S.



NOTE: A HEAT GUN MUST BE USED WHEN FORMING BRITE-PLY FLASHING.

L FLEXIBLE PENETRATION
N.T.S.

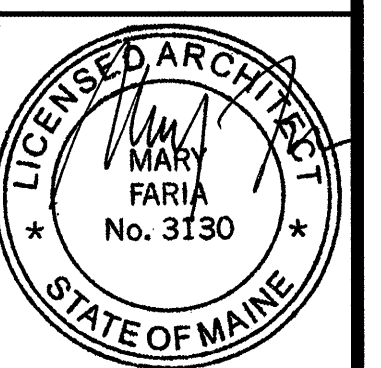


- NOTES:**
1. ALL OUTSIDE AND INSIDE CORNERS REQUIRE TWO CORNER APPLICATIONS OF UNCURD ELASTOFORF FLASHING AS PER DETAIL U-15.
 2. WIDTH OF JOINT SHALL BE A MIN. OF 3/4 IN. (19 mm) AND SHALL NOT EXCEED 2 IN. (5 cm).
 3. HP LOCKING SEAM PLATES OR POLYMER SEAM PLATES ARE REQUIRED IN LIEU OF SEAM FASTENING PLATES FOR MECHANICALLY-FASTENED ROOFING SYSTEMS OVER STEEL DECKS.
 4. POSITION SEAM FASTENING PLATE APPROXIMATELY 5 IN. (13 cm) FROM THE EXPANSION JOINT SUPPORT TO PREVENT EXTENDING CURED FLASHING OVER THE EXPANSION JOINT.

M DECK TO WALL EXPANSION JOINT
N.T.S.

PERMIT ISSUE - 09/27/07

NO.	REVISION	DATE
SCALE: As Noted	DRAWN BY: -	
DATE:	CHECKED BY: -	



PROJECT
RESIDENCE INN BY MARRIOTT
PORTLAND, ME
JOB# 802

TITLE
ROOF DETAILS

GROUP ONE
21 W. THIRD STREET, BOSTON, MA 02127
TEL. (617)268-7000 FAX: (617)268-0209

DRAWING NO.

NOTE: MEMBRANE ROOFING
STANDARD DETAILS BASED ON "CARLISLE" ROOFING SYSTEM - NOTE BUILDING IS WOOD FRAME, SEE STRUCTURAL PLANS, A5.0 FOR MORE INFORMATION

A1.3A