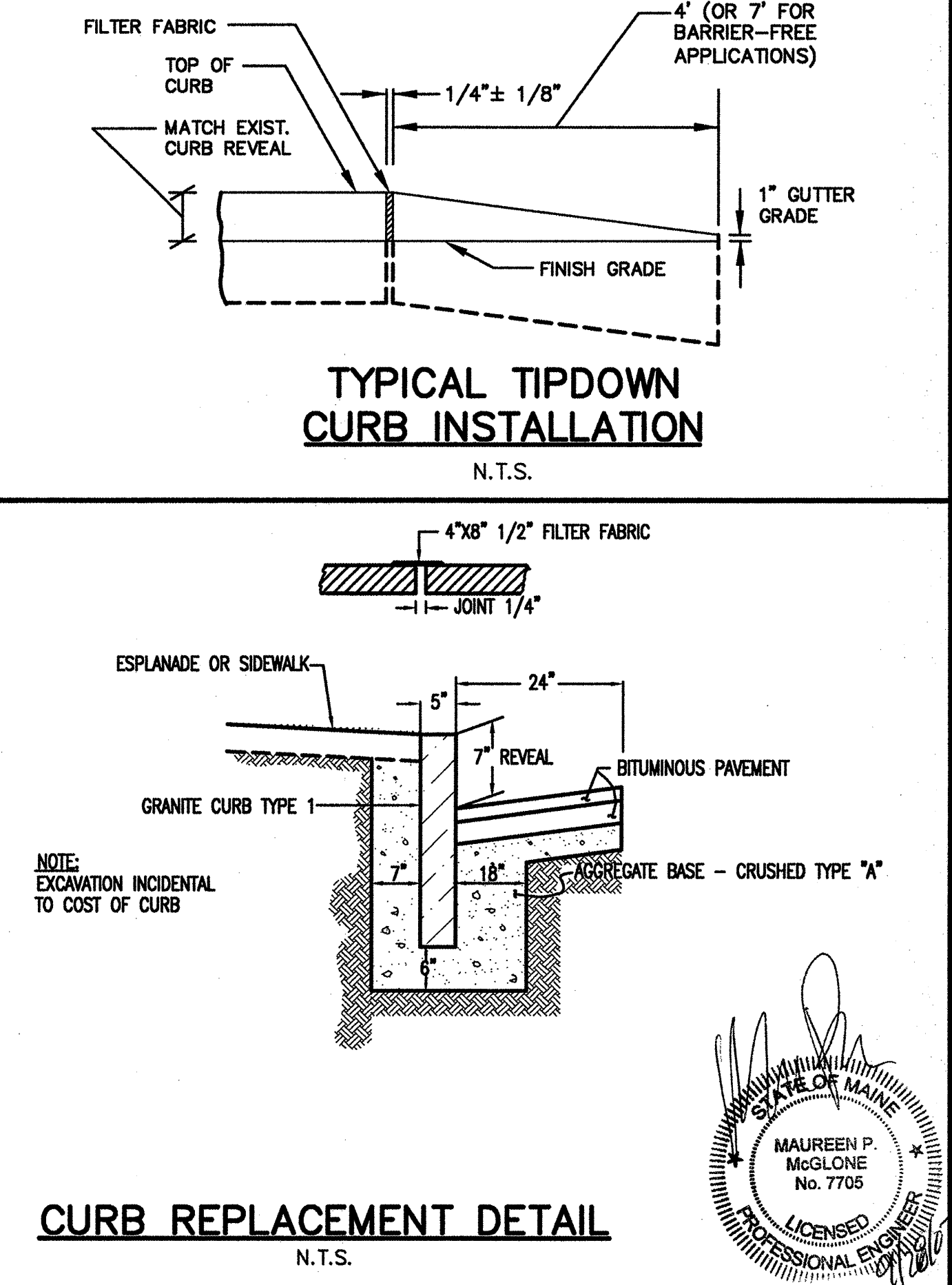
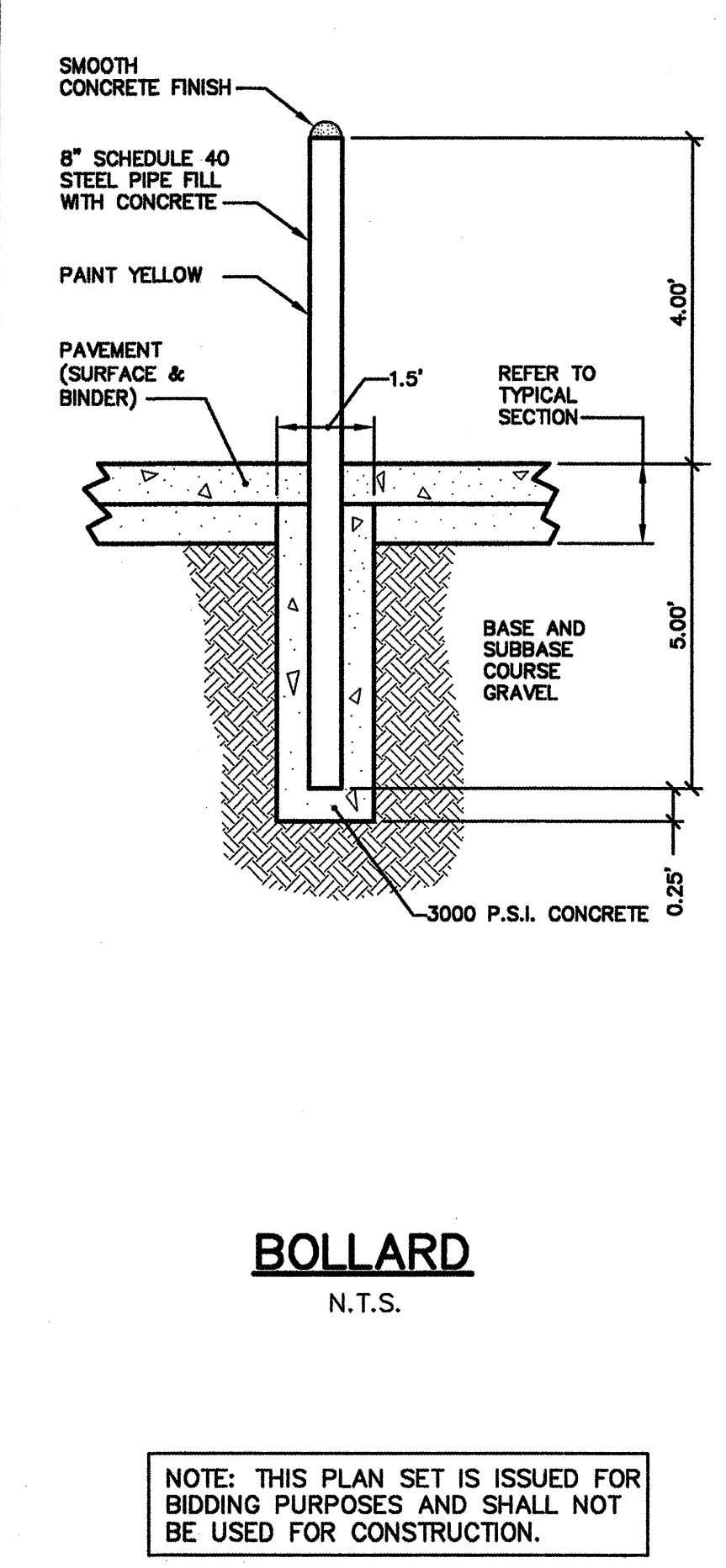
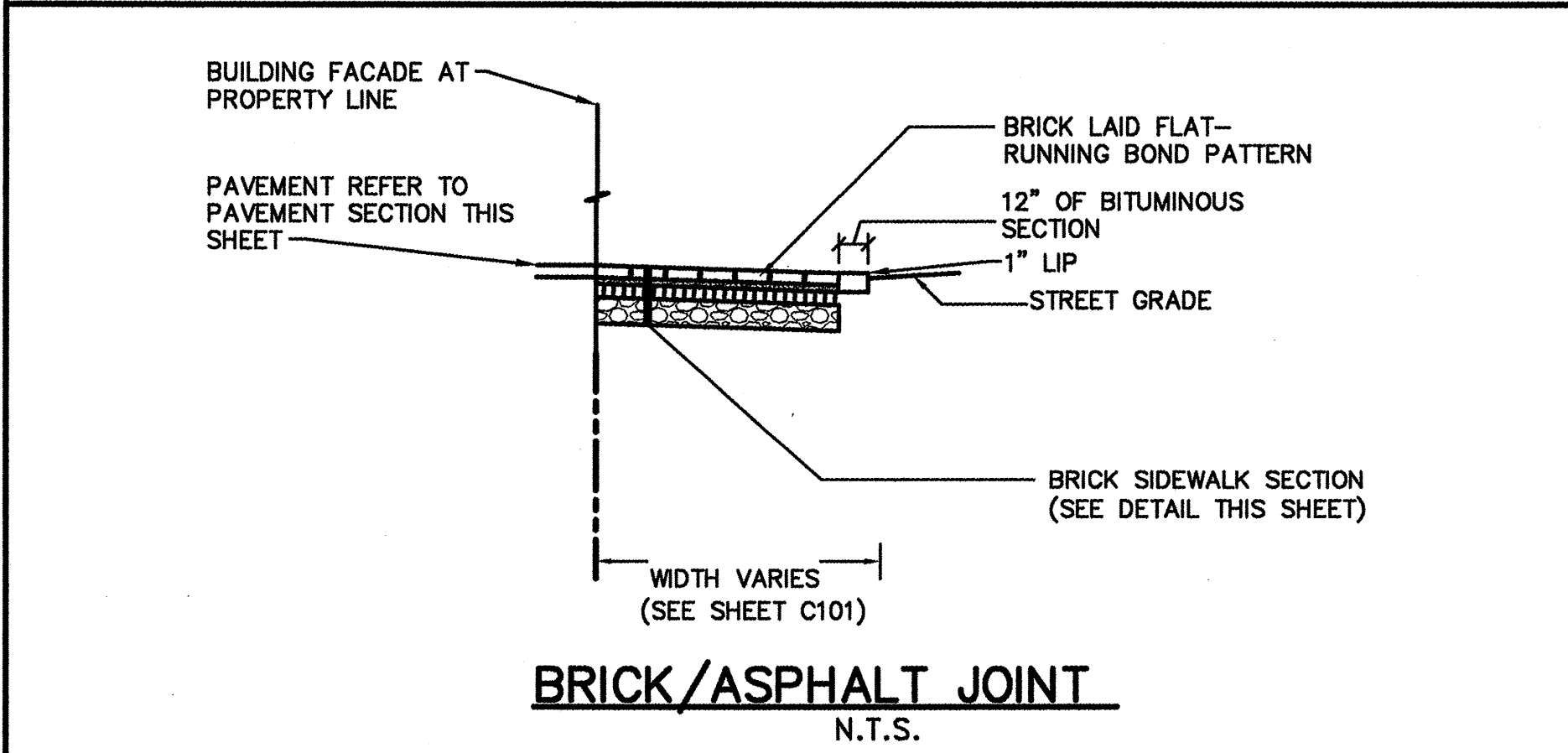
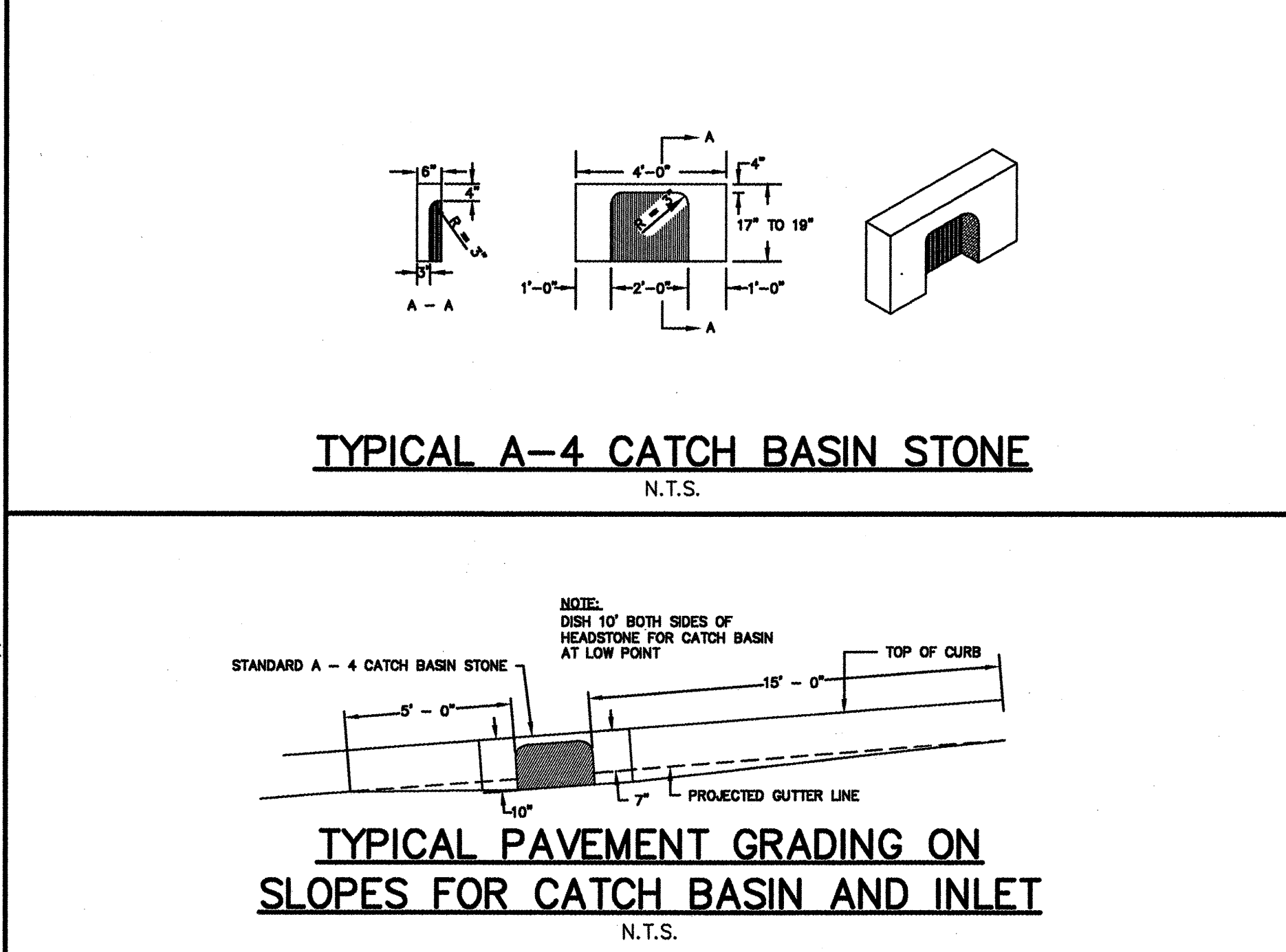


- NOTE:**
- CURB RAMP LENGTHS ARE BASED ON SIX (6) INCH CURB REVEAL HEIGHT AND NO RUNNING SLOPE. RAMP LENGTHS SHALL BE ADJUSTED AS NECESSARY TO ACCOMMODATE VARYING CURB REVEAL HEIGHTS AND TO MATCH RUNNING SLOPES OF ADJACENT ROADWAY AND SIDEWALK SLOPES TO MAINTAIN A RAMP THAT DOES NOT EXCEED THE MAXIMUM RAMP SLOPE OF 1:12.
 - DETECTABLE WARNINGS SHALL CONSIST OF RAISED TRUNCATED DOMES AND SHALL HAVE A BASE DIAMETER OF 0.9 INCHES (23 mm) MINIMUM AND 1.4 INCHES (36 mm) MAXIMUM; A TOP DIAMETER OF 50 PERCENT OF THE BASE DIAMETER MINIMUM TO 65 PERCENT OF THE BASE DIAMETER MAXIMUM AND A HEIGHT OF 0.2 INCHES (5.1 mm), A CENTER-TO-CENTER SPACING OF 1.8 INCHES (41mm) MINIMUM AND 2.4 INCHES (61mm) MAXIMUM; AND A BASE-TO-BASE SPACING OF 0.65 INCHES (17mm) MINIMUM, MEASURED BETWEEN THE MOST ADJACENT DOMES ON A SQUARE GRID.
 - DETECTABLE WARNINGS SHALL CONTRAST VISUALLY WITH ADJOINING SURFACES, EITHER LIGHT-ON-DARK, OR DARK-ON-LIGHT. THE MATERIAL USED TO PROVIDE CONTRAST SHALL BE AN INTEGRAL PART OF THE WALKING SURFACE. DETECTABLE WARNINGS USED ON INTERIOR SURFACES SHALL DIFFER FROM ADJOINING WALKING SURFACES IN RESILIENCY OR SOUND-ON-GANE CONTACT.
 - ALL ACCESSIBLE ROUTE SIDEWALKS INTERSECTING ROADWAYS, DRIVEWAYS, OR OTHER VEHICULAR CROSSINGS REQUIRE DETECTABLE WARNINGS. DETECTABLE WARNING ZONES SHALL BE INSTALLED SIX (6) INCHES (OR THE HORIZONTAL THICKNESS OF THE ADJACENT CURB) FROM THE FLOW LINE OF THE CURB, EXTEND INTO THE SIDEWALK FOR A 24" DEPTH, AND COVER THE COMPLETE WIDTH OF THE SIDEWALK OR RAMP AREA. DETECTABLE WARNING ZONES SHALL CONFORM TO THE SLOPE REQUIREMENTS OF THE RAMP, LANDING, OR ACCESSIBLE ROUTE AS DEFINED IN THE SPECIFIED DETAIL. DETECTABLE WARNINGS SHALL NOT BE INSTALLED IN FLARED SIDES, IF THE RAMP INCLUDES FLARED SIDES.
 - ALL LANDING AREAS SHALL BE 4 FEET WIDE BY 4 FEET LONG (MINIMUM DIMENSIONS). THE SLOPE OF THE LANDING AREA SHALL NOT EXCEED A 1:48 IN ANY DIRECTION.
 - ALL ACCESSIBLE ROUTE SLOPES ADJOINING THE LANDING AREA, EXCLUDING THE CURB RAMP, SHALL NOT EXCEED A SLOPE OF 1:20 UNLESS OTHERWISE NOTED.



Rev.	Date	Revision

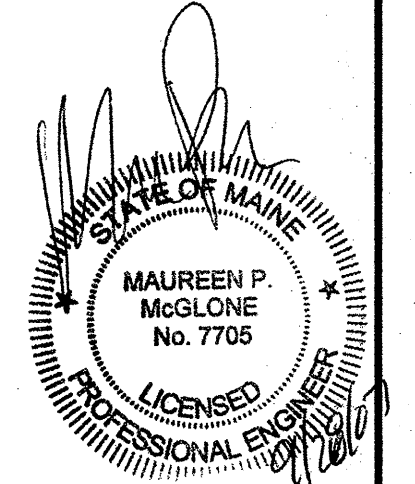
90% PROGRESS	09/17/07	MPM
BIDDING	07/27/07	MPM
PUBLIC HEARING SUBMISSION	05/02/07	MPM
2ND PB WORKSHOP SUBMISSION	02/16/07	MPM
SITE PLAN APPLICATION	01/09/07	MPM
Issued For	Date	By

Design: WHS Draft: BVD Date: DEC 2006
 Checked: MPM Scale: NONE Job No.: 1614
 File Name: 1614-DETAILS.dwg
 This plan shall not be modified without written permission from Gorrill-Palmer Consulting Engineers, Inc. (GPCEI). Any alterations, authorized or otherwise, shall be at the user's sole risk and without liability to GPCEI.

GP Gorrill-Palmer Consulting Engineers, Inc.
 Traffic and Civil Engineering Services
 PO Box 1237 207-657-6910
 15 Shaker Road FAX: 207-657-6912
 Gray, ME 04039 E-Mail: mail@gorrillpalmer.com

Drawing Name: **Site Details**
 Project: **Residence Inn by Marriott - Portland, Maine**
 Client: **Summit Hotel Properties, LLC**
 218 Boston St. Suite 109 - P.O. Box 394 - Topsfield, MA 01983

Drawing No. **C401**



NOTE: THIS PLAN SET IS ISSUED FOR BIDDING PURPOSES AND SHALL NOT BE USED FOR CONSTRUCTION.