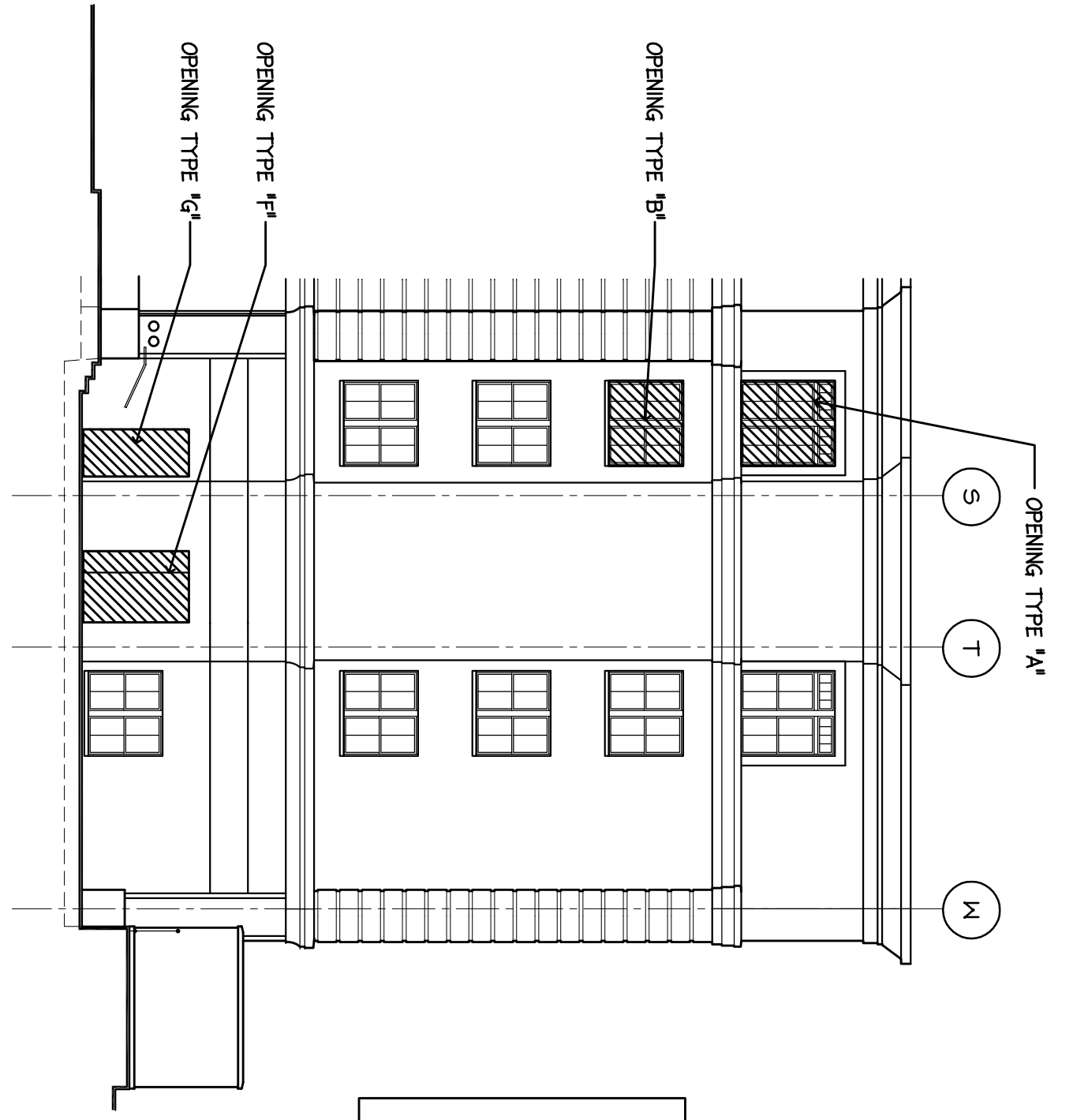


1 REAR ELEVATION
SCALE: 3/32" = 1'-0"

REAR ELEVATION:
TOTAL WALL 14,107 SF
OPENING TYPE 1A 39 SF X 21 = 819 SF
OPENING TYPE 1B 31 SF X 64 = 2,604 SF
OPENING TYPE 1C 20 SF X 6 = 120 SF
OPENING TYPE 1D 1,453 SF
OPENING TYPE 1E 42 SF
TOTAL OPENINGS 5,038 SF
34,288 TOTAL OPENINGS PER WALL



2 SIDE ELEVATION
SCALE: 3/32" = 1'-0"

SIDE ELEVATION:
TOTAL WALL 2,450 SF
OPENING TYPE 1A 39 SF X 2 = 78 SF
OPENING TYPE 1B 31 SF X 7 = 217 SF
OPENING TYPE 1C 21 SF
TOTAL OPENINGS 351 SF
14,337 TOTAL OPENINGS PER WALL

**PERMIT REVIEW
CORRECTIONS 1-16-08**

NO.	REVISION	DATE
SCALE: As Noted	DRAWN BY: ANS	
DATE:	CHECKED BY: JR	

PROJECT
**RESIDENCE INN
BY MARRIOTT**
PORTLAND, ME
JOB# 802

TITLE
**EXTERIOR
ELEVATIONS
OPENINGS**

GROUP ONE
21 W. THIRD STREET, BOSTON, MA 02127
TEL: (617)288-7000 FAX: (617)288-0209

DRAWING NO.

A

