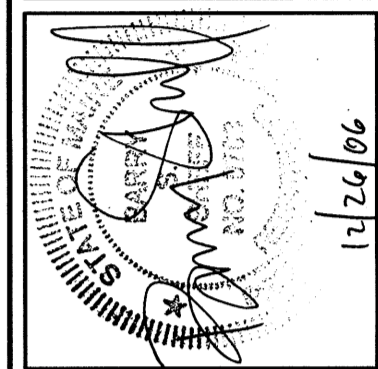


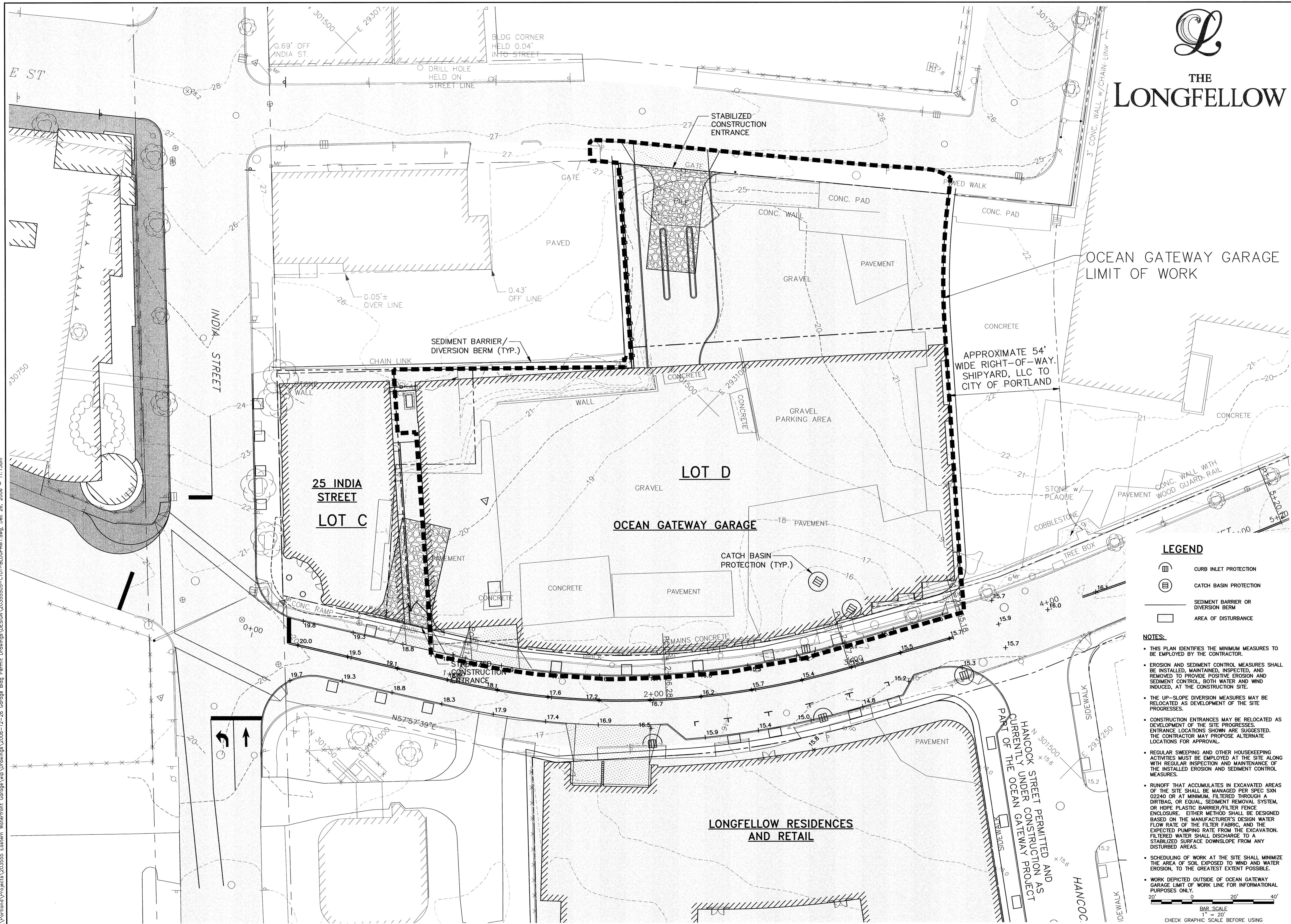
THE LONGFELLOW

WOODARD & CURRAN
Engineering · Science · Operations
PORTLAND, MAINE
800-428-4262



REV	DESCRIPTION	DATE
1	CITY SITE BUILDING PERMIT SUBMISSION	12/26/06

DESIGNED BY: JBC
CHECKED BY: DAS/BSS
DRAWN BY: JBC
20355505-C101-BLDGPRMT.dwg
11/26/06



OCEAN GATEWAY GARAGE
LIMIT OF WORK

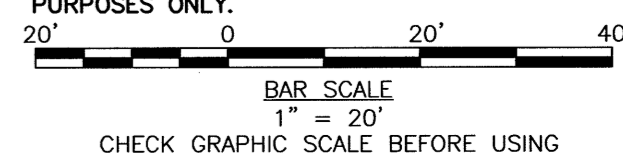
APPROXIMATE 54'
WIDE RIGHT-OF-WAY.
SHIPYARD, LLC TO
CITY OF PORTLAND

LEGEND

- CURB INLET PROTECTION
- CATCH BASIN PROTECTION
- SEDIMENT BARRIER OR DIVERSION BERM
- AREA OF DISTURBANCE

NOTES:

- THIS PLAN IDENTIFIES THE MINIMUM MEASURES TO BE EMPLOYED BY THE CONTRACTOR.
- EROSION AND SEDIMENT CONTROL MEASURES SHALL BE INSTALLED, MAINTAINED, INSPECTED, AND REMOVED TO PROVIDE POSITIVE EROSION AND SEDIMENT CONTROL, BOTH WATER AND WIND INDUCED, AT THE CONSTRUCTION SITE.
- THE UP-SLOPE DIVERSION MEASURES MAY BE RELOCATED AS DEVELOPMENT OF THE SITE PROGRESSES.
- CONSTRUCTION ENTRANCES MAY BE RELOCATED AS DEVELOPMENT OF THE SITE PROGRESSES. ENTRANCE LOCATIONS SHOWN ARE SUGGESTED. THE CONTRACTOR MAY PROPOSE ALTERNATE LOCATIONS FOR APPROVAL.
- REGULAR SWEEPING AND OTHER HOUSEKEEPING ACTIVITIES MUST BE EMPLOYED AT THE SITE ALONG WITH REGULAR INSPECTION AND MAINTENANCE OF THE INSTALLED EROSION AND SEDIMENT CONTROL MEASURES.
- RUNOFF THAT ACCUMULATES IN EXCAVATED AREAS OF THE SITE SHALL BE MANAGED PER SPEC SXN 02240 OR AT MINIMUM, FILTERED THROUGH A DIRTBAG OR EQUAL, SEDIMENT REMOVAL SYSTEM, OR HDPE PLASTIC BARRIER/FILTER FENCE ENCLOSURE. EITHER METHOD SHALL BE DESIGNED BASED ON THE MANUFACTURER'S DESIGN WATER FLOW RATE OF THE FILTER FABRIC, AND THE EXPECTED PUMPING RATE FROM THE EXCAVATION. FILTERED WATER SHALL DISCHARGE TO A STABILIZED SURFACE DOWNSLOPE FROM ANY DISTURBED AREAS.
- SCHEDULING OF WORK AT THE SITE SHALL MINIMIZE THE AREA OF SOIL EXPOSED TO WIND AND WATER EROSION, TO THE GREATEST EXTENT POSSIBLE.
- WORK DEPICTED OUTSIDE OF OCEAN GATEWAY GARAGE LIMIT OF WORK LINE FOR INFORMATIONAL PURPOSES ONLY.



EROSION AND SEDIMENT CONTROL PLAN

OCEAN GATEWAY GARAGE LLC
2 MARKET STREET, SUITE 500
PORTLAND, ME 04101

OCEAN GATEWAY GARAGE

JOB NO.: 203555.05
DATE: DECEMBER 2006
SCALE: 1" = 20'
SHEET: OF -

C101

\\Portland\Projects\203555 Eastern Waterfront Garage\wp\Drawings\2006-12-26 Garage Bldg Permit Drawings\DESIGN\20355505-C101-BLDGPRMT.dwg, Dec 26, 2006 - 11:13am