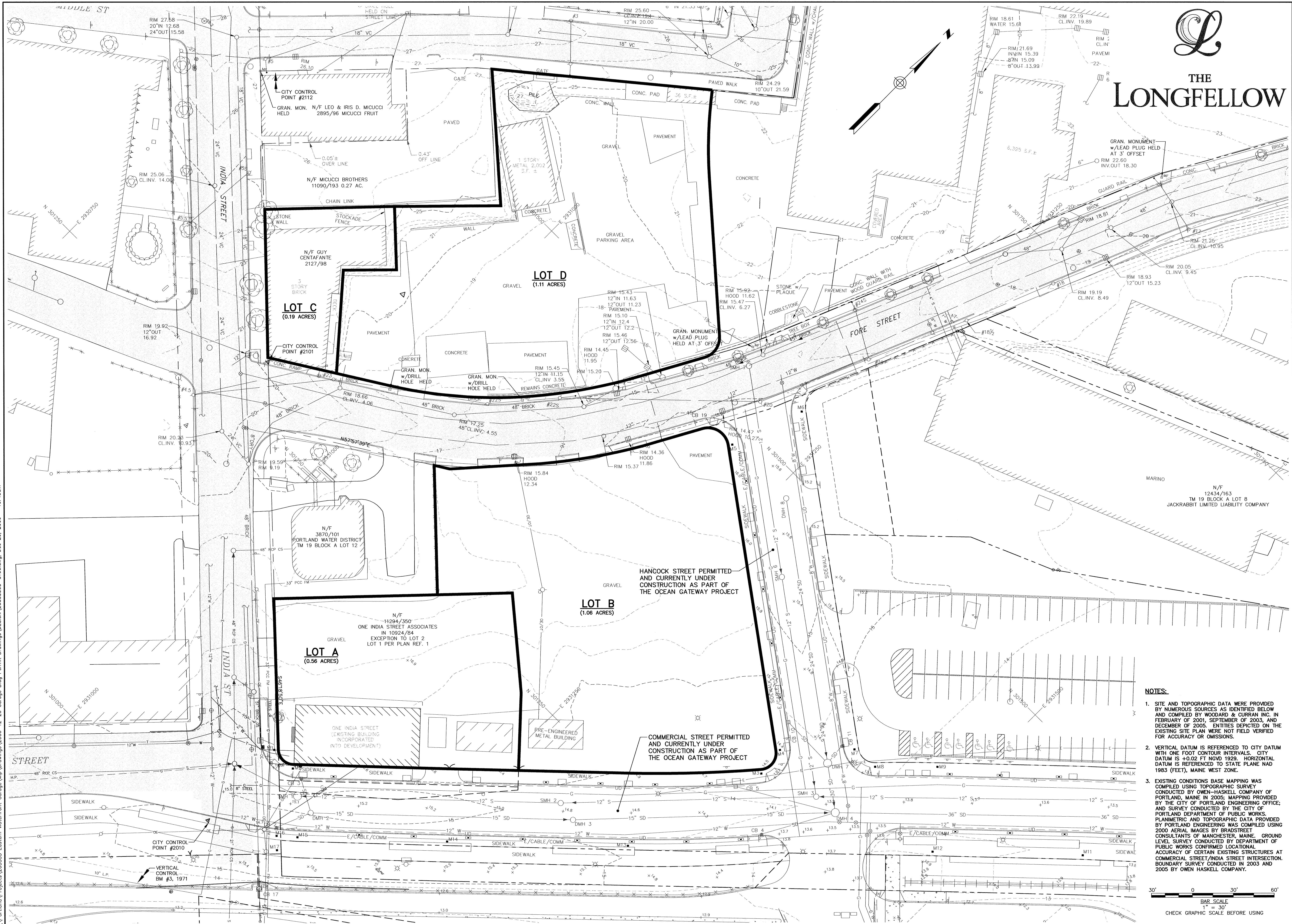
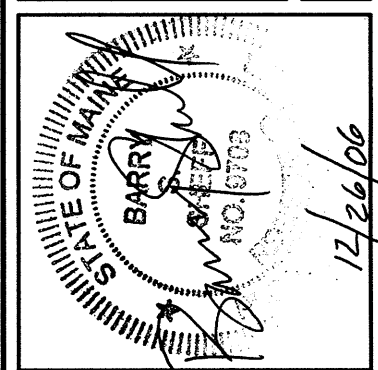


Portland Projects 203555 Eastern Waterfront Garage Wp Drawings 2006-12-26 Garage Bldg Permit Drawings DESIGN\203555-0100.dwg, Dec. 26, 2006 - 10:45am



  
**THE LONGFELLOW**

**WOODARD & CURRAN**  
 Engineering · Science · Operations  
 PORTLAND, MAINE  
 800-426-4262  
THIS DOCUMENT IS THE PROPERTY OF WOODARD & CURRAN INC. AND ITS CLIENT. REPRODUCTION OR MODIFICATION WITHOUT WRITTEN PERMISSION IS PROHIBITED.



REV.	DESCRIPTION	DATE
1	CITY SITE BUILDING PERMIT SUBMISSION	12/26/06

DESIGNED BY: JBC  
 CHECKED BY: DAS/BSS  
 DRAWN BY: JBC

**EXISTING SITE PLAN**

**OCEAN GATEWAY GARAGE LLC**  
 2 MARKET STREET, SUITE 500  
 PORTLAND, ME 04101  
**OCEAN GATEWAY GARAGE**

JOB NO.: 203555.05  
 DATE: DECEMBER 2006  
 SCALE: 1" = 30'  
 SHEET: 0F -

**C100**

- NOTES:**
- SITE AND TOPOGRAPHIC DATA WERE PROVIDED BY NUMEROUS SOURCES AS IDENTIFIED BELOW AND COMPILED BY WOODARD & CURRAN INC. IN FEBRUARY OF 2001, SEPTEMBER OF 2003, AND DECEMBER OF 2005. ENTITIES DEPICTED ON THE EXISTING SITE PLAN WERE NOT FIELD VERIFIED FOR ACCURACY OR OMISSIONS.
  - VERTICAL DATUM IS REFERENCED TO CITY DATUM WITH ONE FOOT CONTOUR INTERVALS. CITY DATUM IS +0.02 FT NGVD 1929. HORIZONTAL DATUM IS REFERENCED TO STATE PLANE NAD 1983 (FEET), MAINE WEST ZONE.
  - EXISTING CONDITIONS BASE MAPPING WAS COMPILED USING TOPOGRAPHIC SURVEY CONDUCTED BY OWEN-HASKELL COMPANY OF PORTLAND, MAINE IN 2005; MAPPING PROVIDED BY THE CITY OF PORTLAND ENGINEERING OFFICE; AND SURVEY CONDUCTED BY THE CITY OF PORTLAND DEPARTMENT OF PUBLIC WORKS. PLANIMETRIC AND TOPOGRAPHIC DATA PROVIDED BY PORTLAND ENGINEERING WAS COMPILED USING 2000 AERIAL IMAGES BY BRADSTREET CONSULTANTS OF MANCHESTER, MAINE. GROUND LEVEL SURVEY CONDUCTED BY DEPARTMENT OF PUBLIC WORKS CONFIRMED LOCALATIONAL ACCURACY OF CERTAIN EXISTING STRUCTURES AT COMMERCIAL STREET/INDIA STREET INTERSECTION. BOUNDARY SURVEY CONDUCTED IN 2003 AND 2005 BY OWEN HASKELL COMPANY.

