



PORT CITY ARCHITECTURE

65 NEWBURY STREET
PORTLAND, ME 04101
207.761.9000



Consultants:

NOT FOR CONSTRUCTION

PERMIT SET

Residence Remodel

Catamount Properties

**45-47 Hancock St.
Portland, ME
04101**

#	DATE	DESCRIPTION
1	2-3-17	PERMIT (REV'D.)

Date Issued February 3, 2017
Project Number 16007
Drawing Scale AS NOTED

FLOOR PLANS

CITY OF PORTLAND
APPROVED SITE PLAN
Subject to Conditions of Approval
Checklist Standard Conditions



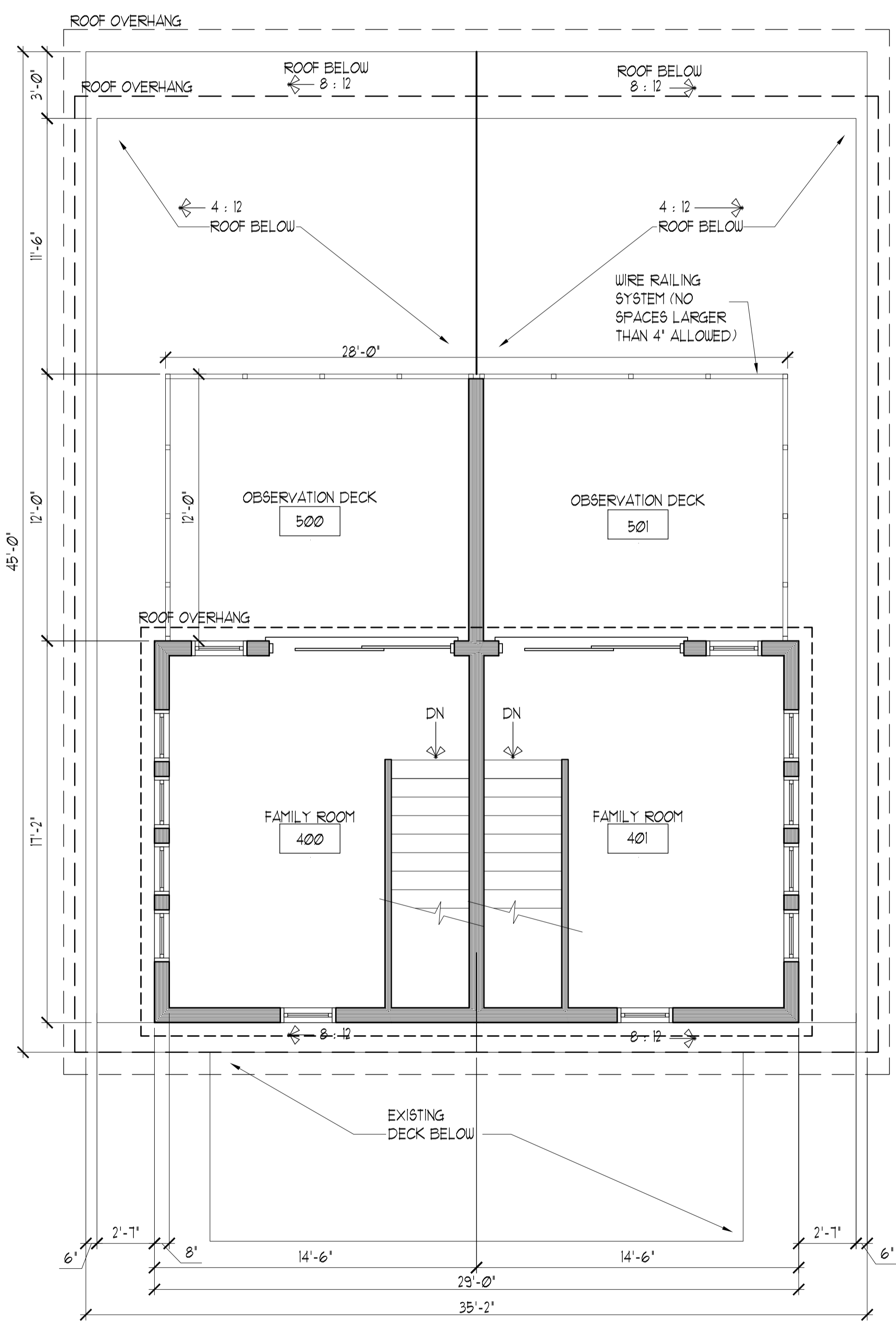
ACH

DATE of APPROVAL January 30, 2017

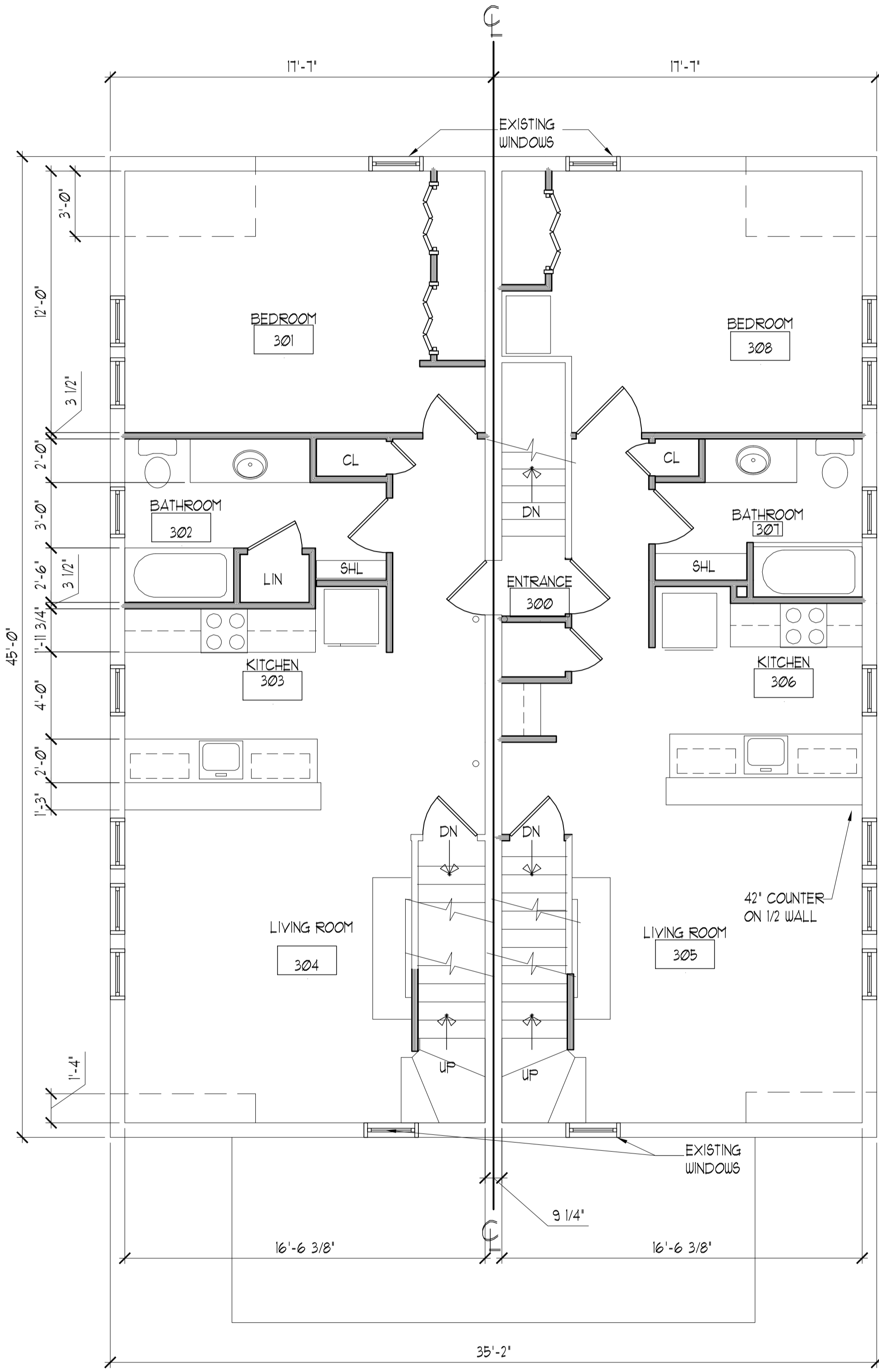
PLANNER Caitlin Cameron

PROJECT NO. 2016-195

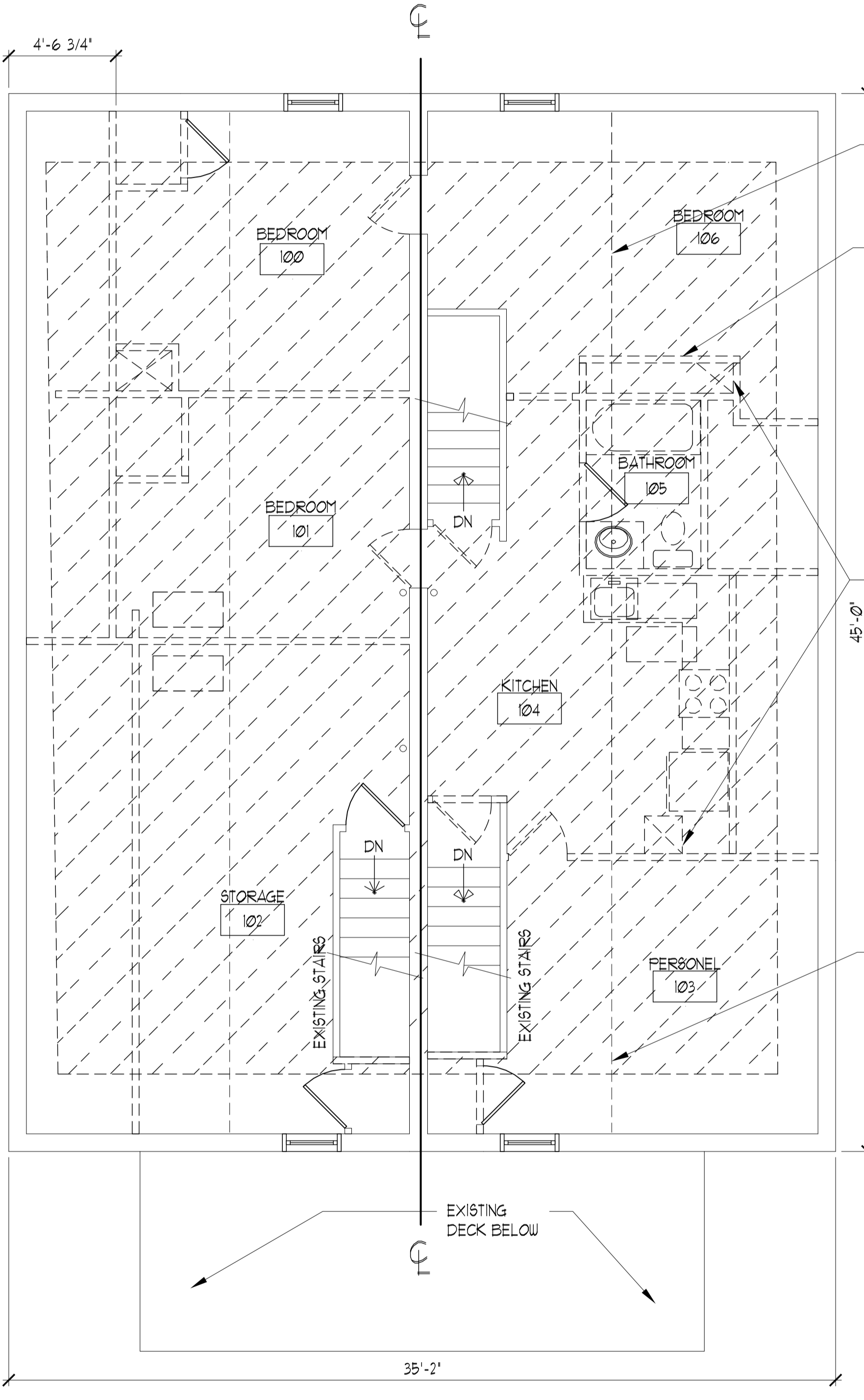
COPYRIGHT: Reuse or reproduction of the contents of this document is not permitted without written permission of PORT CITY ARCHITECTURE, P.A.



3 NEW DECK PLAN
SCALE: 1/4" = 1'-0"



2 FLOOR PLAN
SCALE: 1/4" = 1'-0"



1 DEMOLITION PLAN
SCALE: 1/4" = 1'-0"

3
2
1
0
SCALE 1" = 1'-0"
4
3
2
1
0
SCALE 3/4" = 1'-0"
6
5
4
3
2
1
0
SCALE 1/2" = 1'-0"
12
10
8
6
4
2
0
SCALE 1/4" = 1'-0"
20
18
16
14
12
10
8
6
4
2
0
SCALE 1/8" = 1'-0"
40
30
20
10
0
SCALE 1/16" = 1'-0"