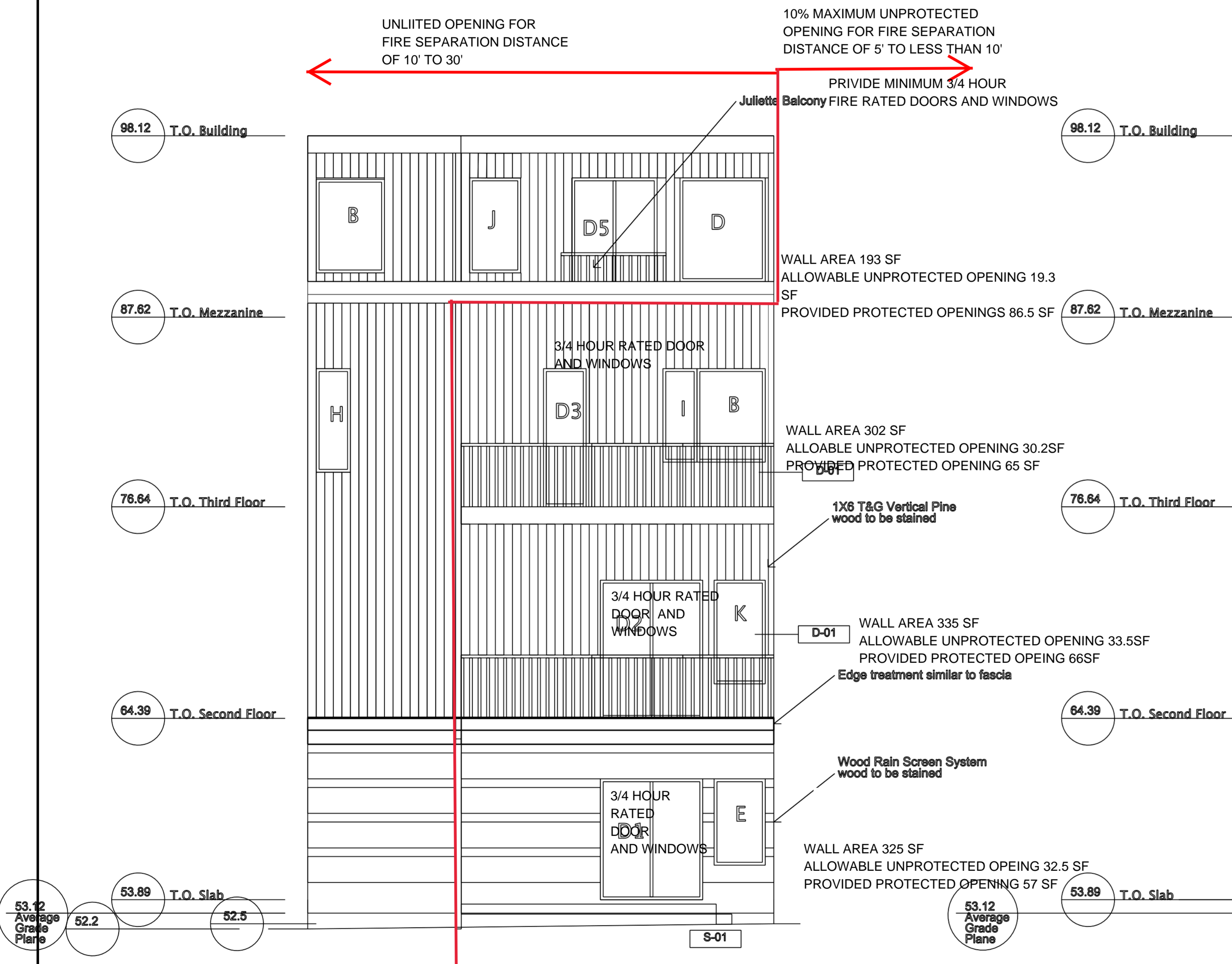
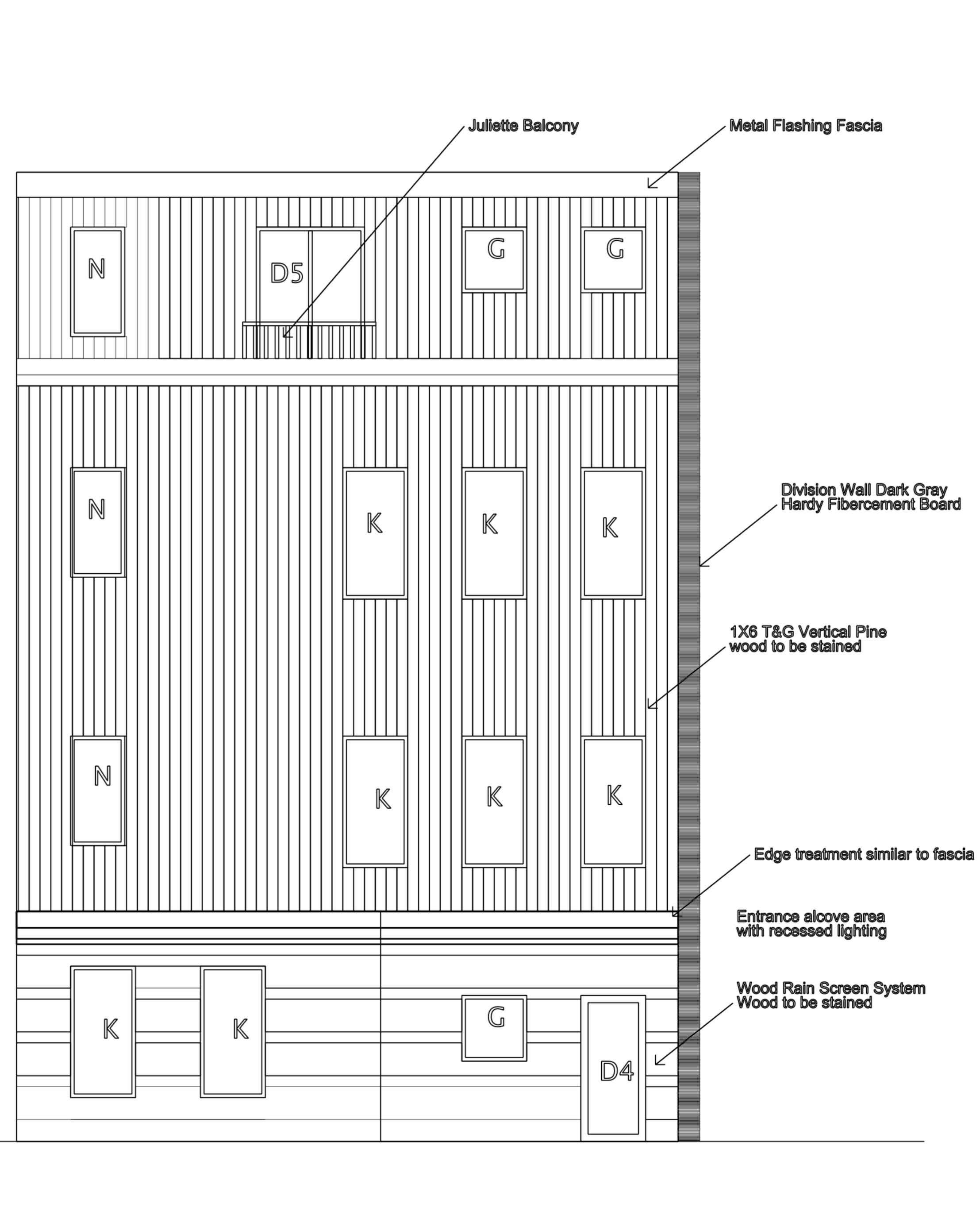


The unprotected exterior openings are based on the use of NFPA 13 R sprinkler system through out the proposed building. In the event which the owner upgrade the sprinkler system to NFPA 13, the allowable unprotected opening is 25% on the south elevation and will meet the allowable unprotected opening requirement without the 3/4 hour rated windows and doors.



SOUTH ELEVATION

1/4" = 1'-0"

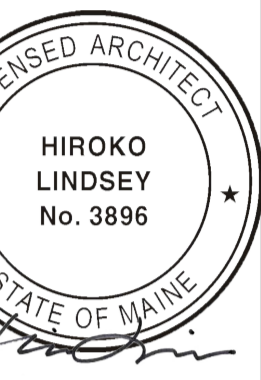


NORTH ELEVATION

1/4" = 1'-0"

Sunny Time Solar

PO Box 15372
Portland, ME
04112
207.522.4345
livchase@yahoo.com



PROJECT NO. 2016
PROJECT NAME 49 HANCOCK STREET
PORTLAND, MAINE

REVISIONS

1	-3/29/16
2	-6/10/16
3	-7/11/16
4	-8/15/16
5	-8/19/16

PERMITTING DOCUMENTS

ISSUE DATE 1/9/15
DRAWN BY LRC
SHEET TITLE SHEET TITLE
SHEET SCALE 1/4" = 1'-0"

A
2.3