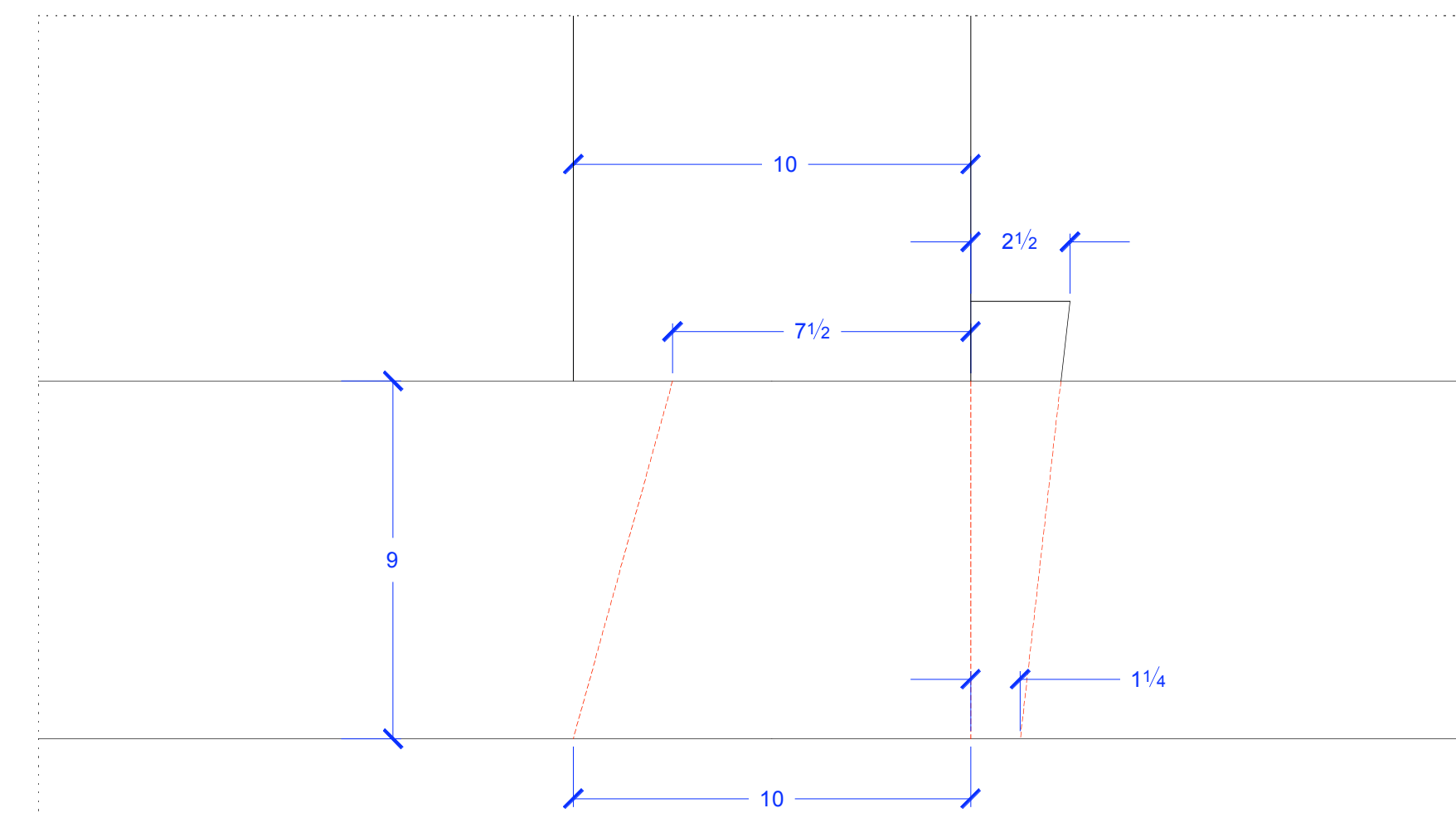
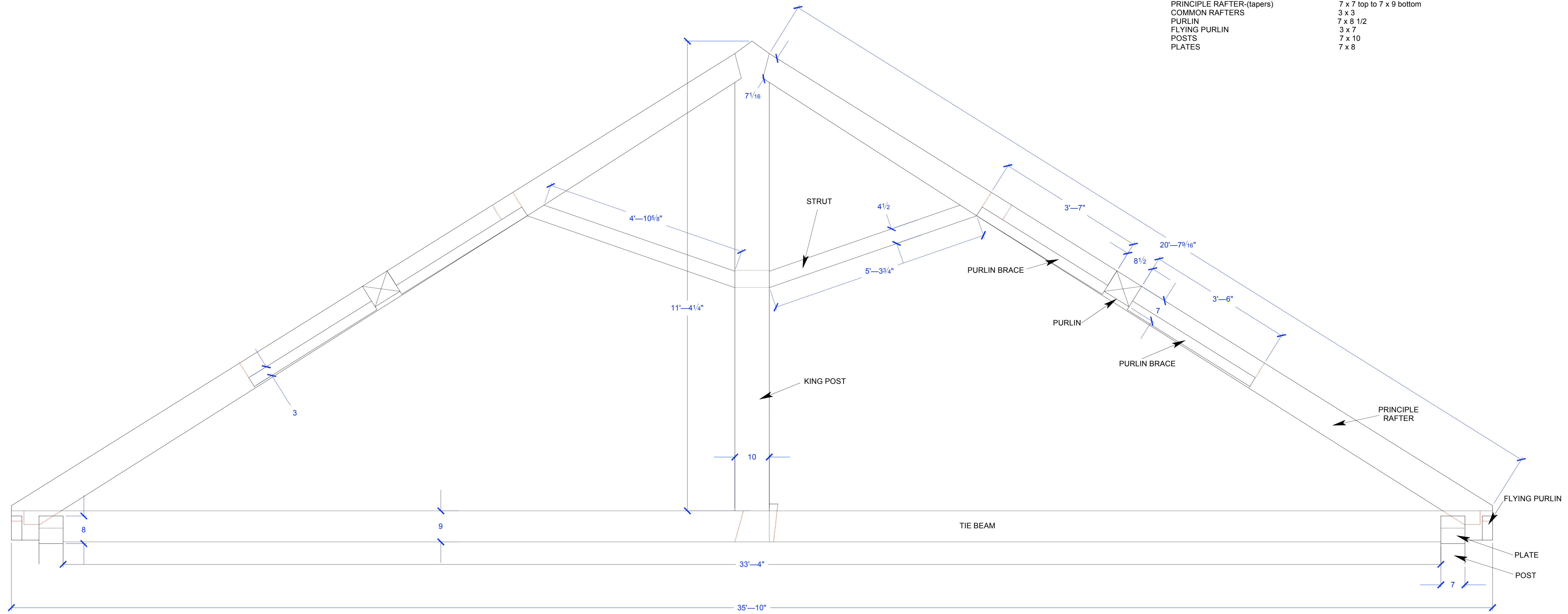


PRINCIPLE FRAME MEMBER DIMENSIONS

KING POST	10 x 8
TIE BEAM	9 X 10
STRUTS	4 1/2 x 4
PURLIN to PRINCIPLE RAFTER BRACES	3 x 5
PRINCIPLE RAFTER (tapers)	7 x 7 top to 7 x 9 bottom
COMMON RAFTERS	3 x 3
PURLIN	7 x 8 1/2
FLYING PURLIN	3 x 7
POSTS	7 x 10
PLATES	7 x 8



CONJECTURAL KING POST to TIE BEAM JOINT: WEDGED HALF DOVETAIL  
 DETAIL SCALE: 3" = 1'