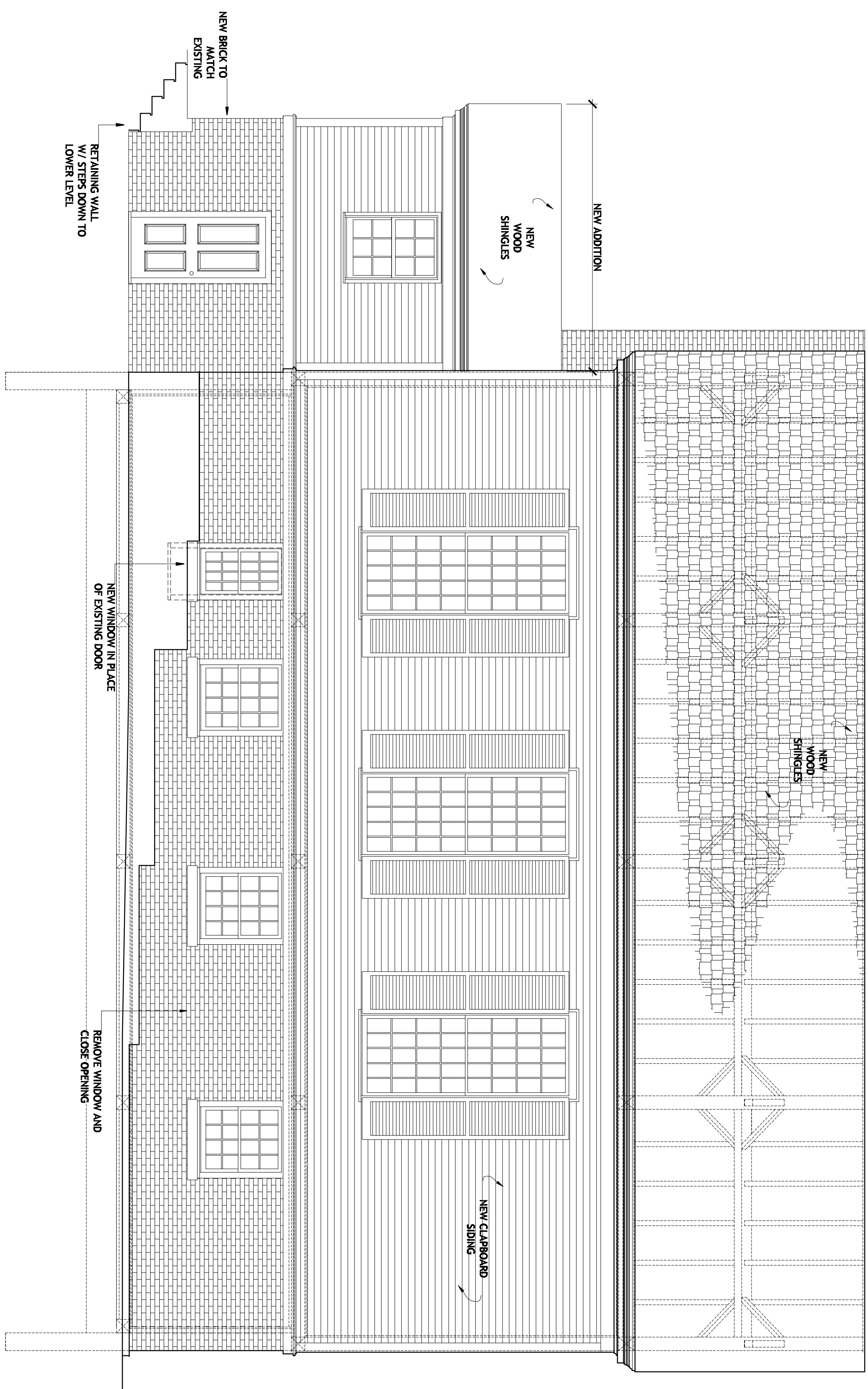
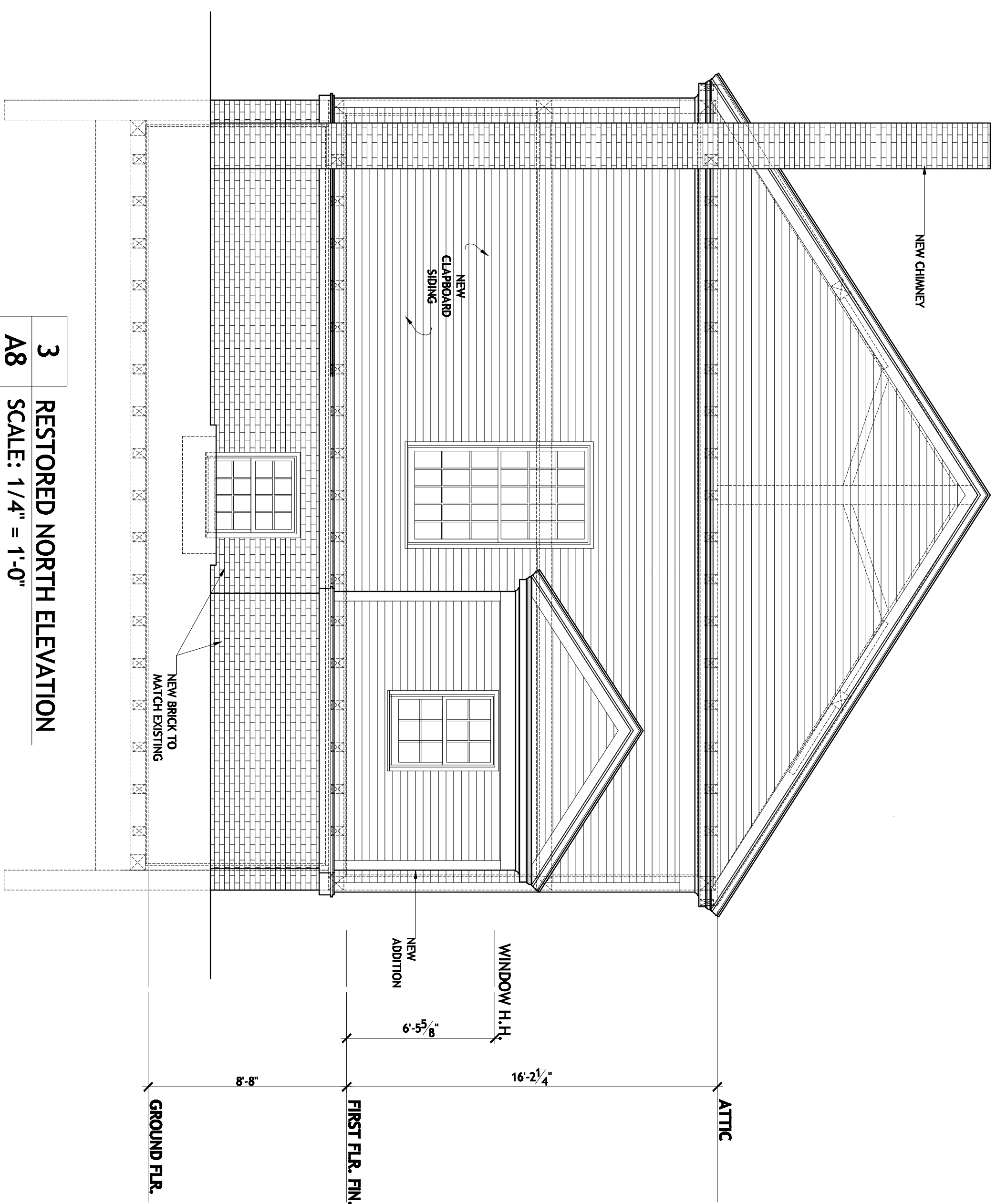


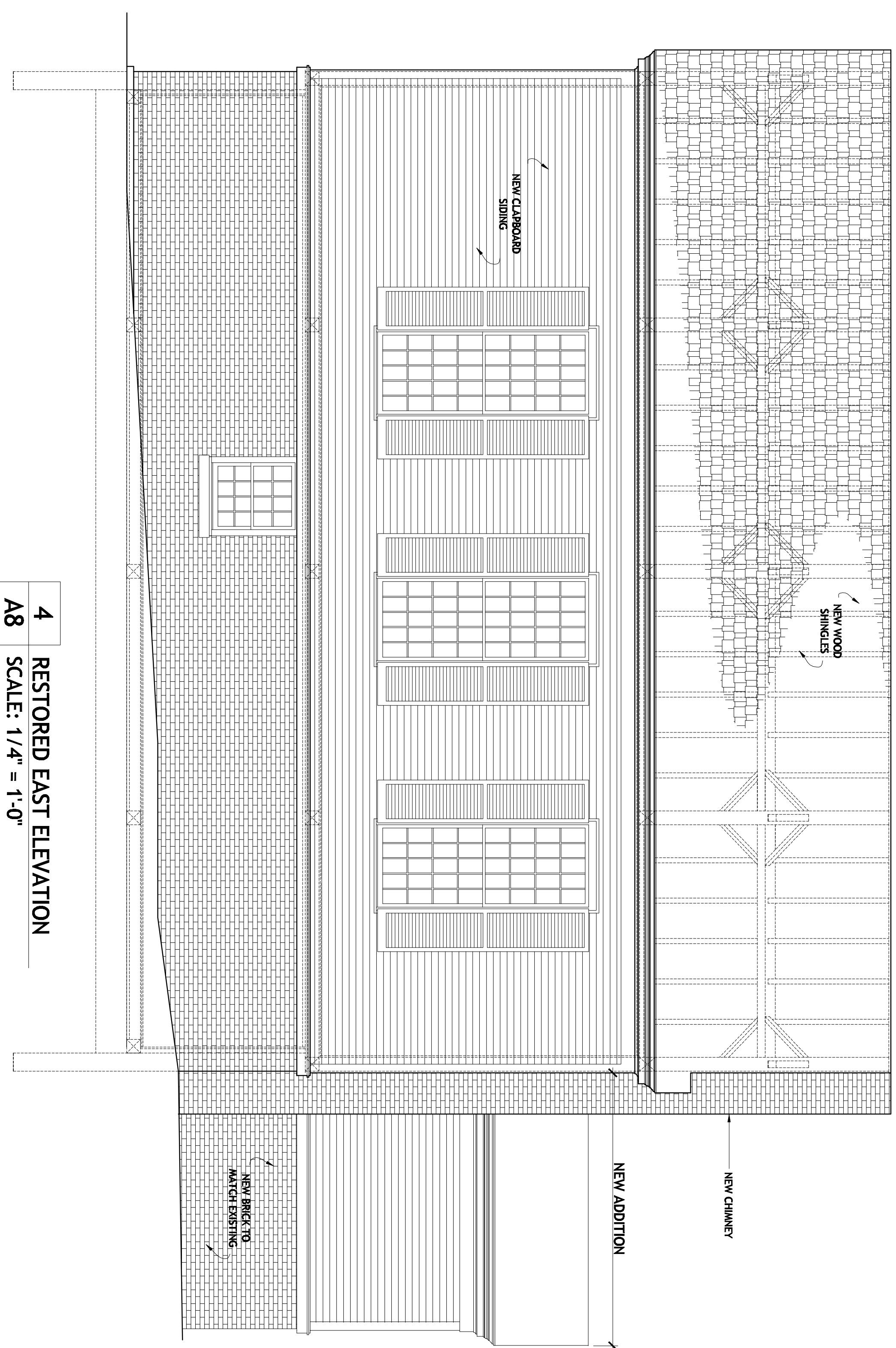
1
A8
RESTORED SOUTH ELEVATION
SCALE: 1/4" = 1'-0"



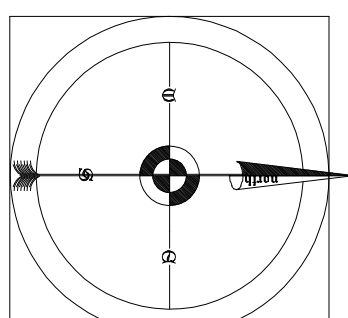
2
A8
RESTORED WEST ELEVATION
SCALE: 1/4" = 1'-0"



3
A8
RESTORED NORTH ELEVATION
SCALE: 1/4" = 1'-0"



4
A8
RESTORED EAST ELEVATION
SCALE: 1/4" = 1'-0"



NO.	DESCRIPTION