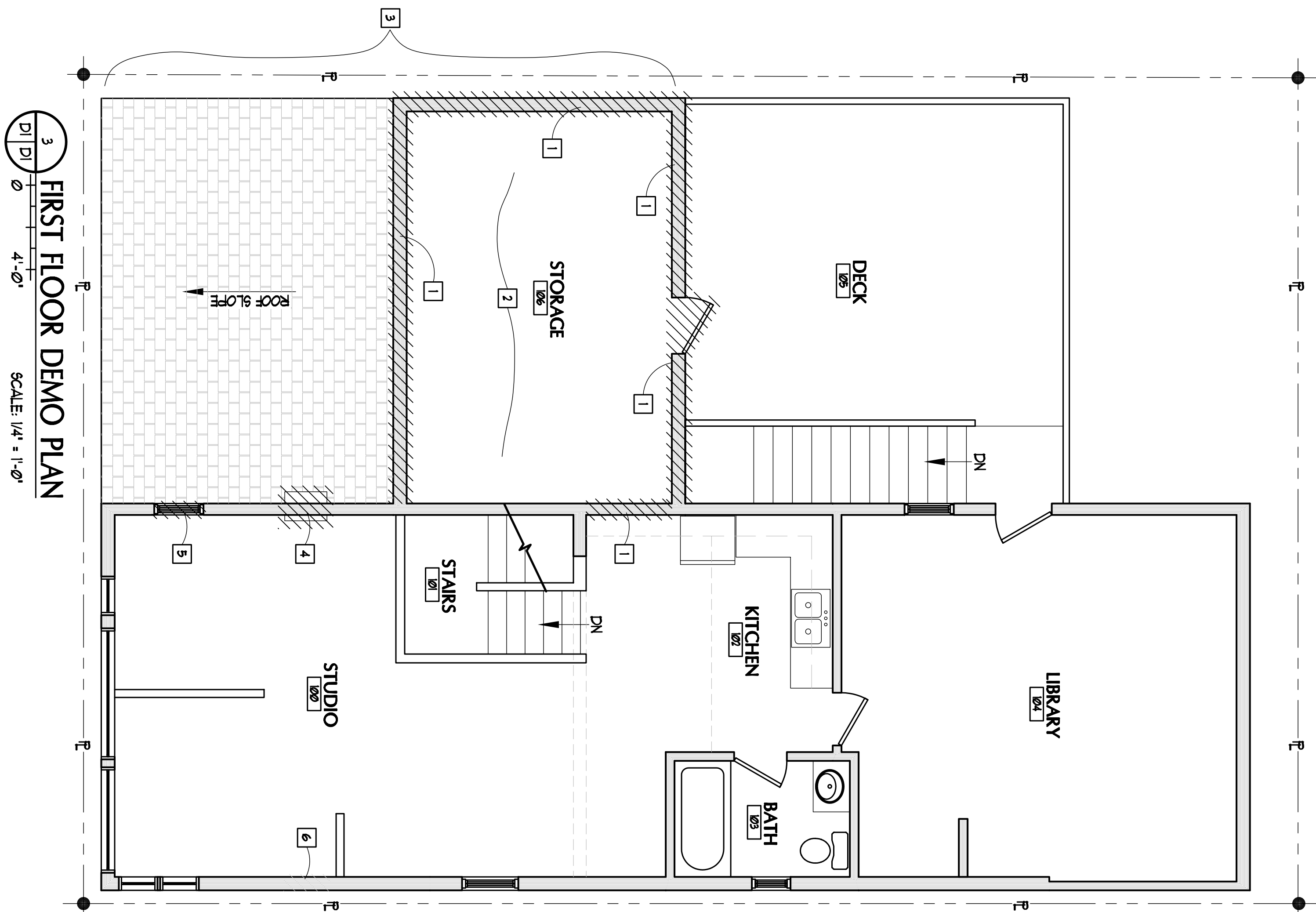
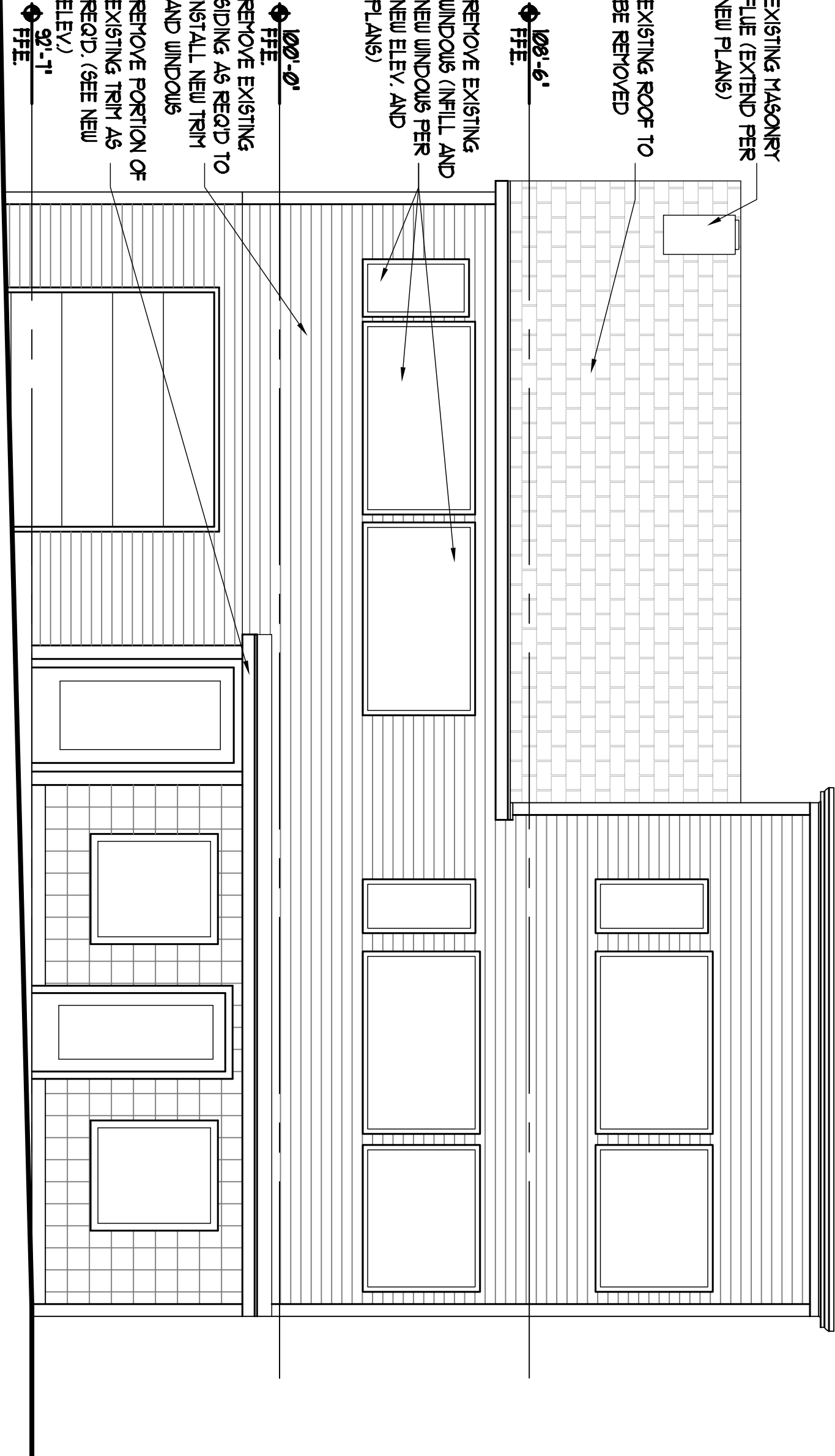
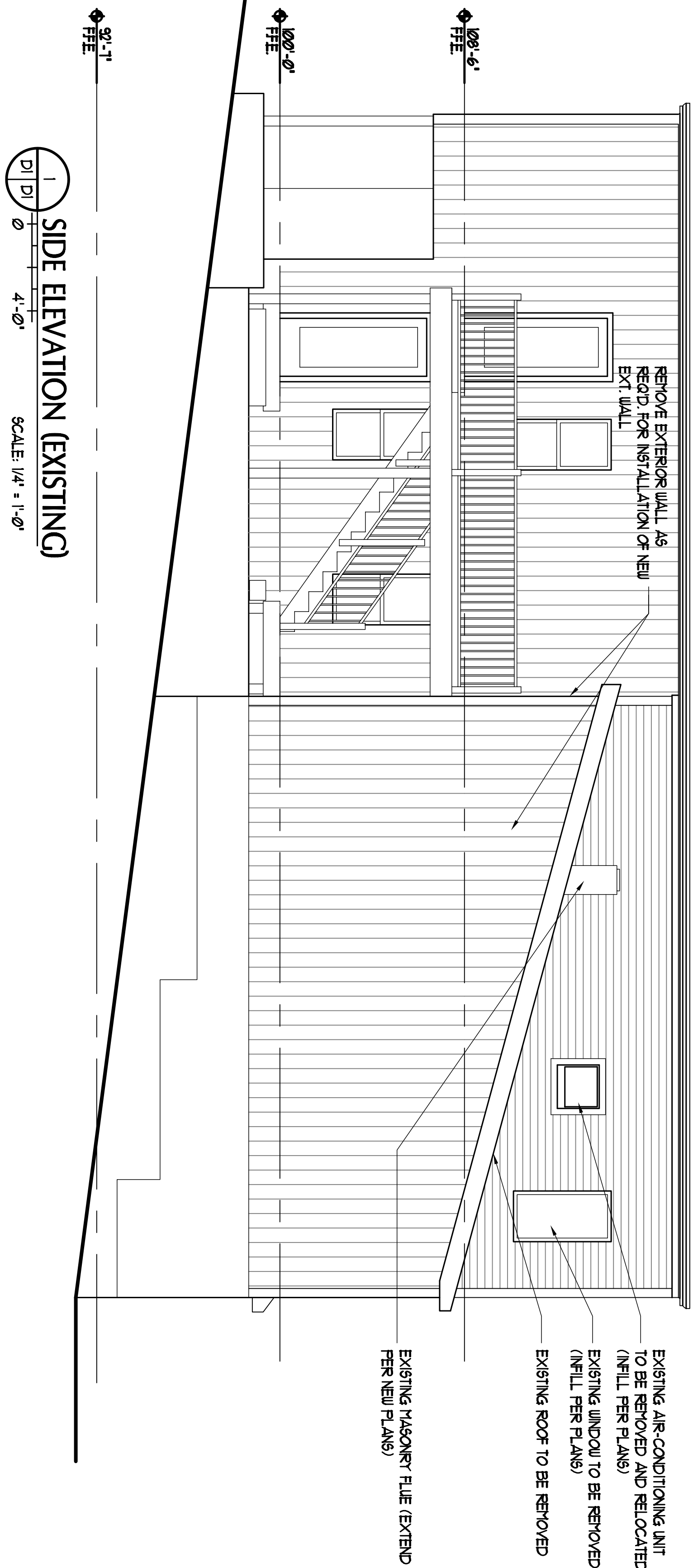


IF THIS SHEET IS NOT 24 X 36 IT IS A REDUCED SCALE PRINT – SCALE ACCORDINGLY



PLAN DEMOLITION NOTES

- 1 REMOVE PORTION OF EXISTING WALL AS SHOWN
- 2 REMOVE EXISTING SUPERFLOOR AS REQUIRED TO EXPOSE THE EXISTING CEILING JOISTS.
- 3 REMOVE EXISTING ROOFING AND ROOF STRUCTURE OVER STORAGE 100% AS REQUIRED.
- 4 REMOVE AND RELOCATE EXISTING AIR-CONDITIONING UNIT.
- 5 REMOVE AND DISCARD EXISTING WINDOW UNIT.
- 6 REMOVE PORTION OF WALL AS REQD. FOR AIR-CONDITIONING UNIT.

Office Renovations
PORT CITY ARCHITECTURE
Portland, Maine

CONSULTANTS:

PORT CITY
ARCHITECTURE
65 NEWBURY STREET
PORTLAND, ME 04101
207.761.9000
fax: 207.761.2010
info@portcityarch.com

EXISTING / DEMO
PLANS

Drawn By
ANN
Checked By
ACH

D1

COPYRIGHT: Reuse or reproduction of the contents of this document is not permitted without written permission of PORT CITY ARCHITECTURE PA.