

NFPA 13R EXCEPTIONS

- SPRINKLERS SHALL BE INSTALLED IN ALL AREAS.

- 1
- 2
- 3
- 4
- 5

EXCEPTION NO. 1: SPRINKLERS SHALL NOT BE REQUIRED IN BATHROOMS WHERE THE AREA DOES NOT EXCEED 65 FEET SQUARED AND THE WALLS AND CEILING, INCLUDING WALLS AND CEILING BEHIND FIXTURES, ARE NON-COMBUSTIBLE OF LIMITED COMBUSTIBLE MATERIALS PROVIDING A 15 MINUTE THERMAL BARRIER. THE AREA OCCUPIED BY A NON-COMBUSTIBLE, FULL HEIGHT, SHOWER/BATHUB ENCLOSURE SHALL NOT BE REQUIRED TO BE ADDED TO THE FLOOR AREA WHEN DETERMINING THE AREA OF THE BATHROOM.

EXCEPTION NO. 2: SPRINKLERS SHALL NOT BE REQUIRED IN CLOTHES CLOSETS, LINEN CLOSETS, AND PANTRIES WITHIN THE DWELLING UNITS WHERE THE AREA OF SPACE DOES NOT EXCEED 24 FEET SQUARED, THE LEAST DIMENSION DOES NOT EXCEED 3 FEET, AND THE WALLS AND CEILING ARE SURFACED WITH NON-COMBUSTIBLE MATERIALS AS DEFINED BY NFPA 220, STANDARD ON TYPES OF BUILDING CONSTRUCTION.

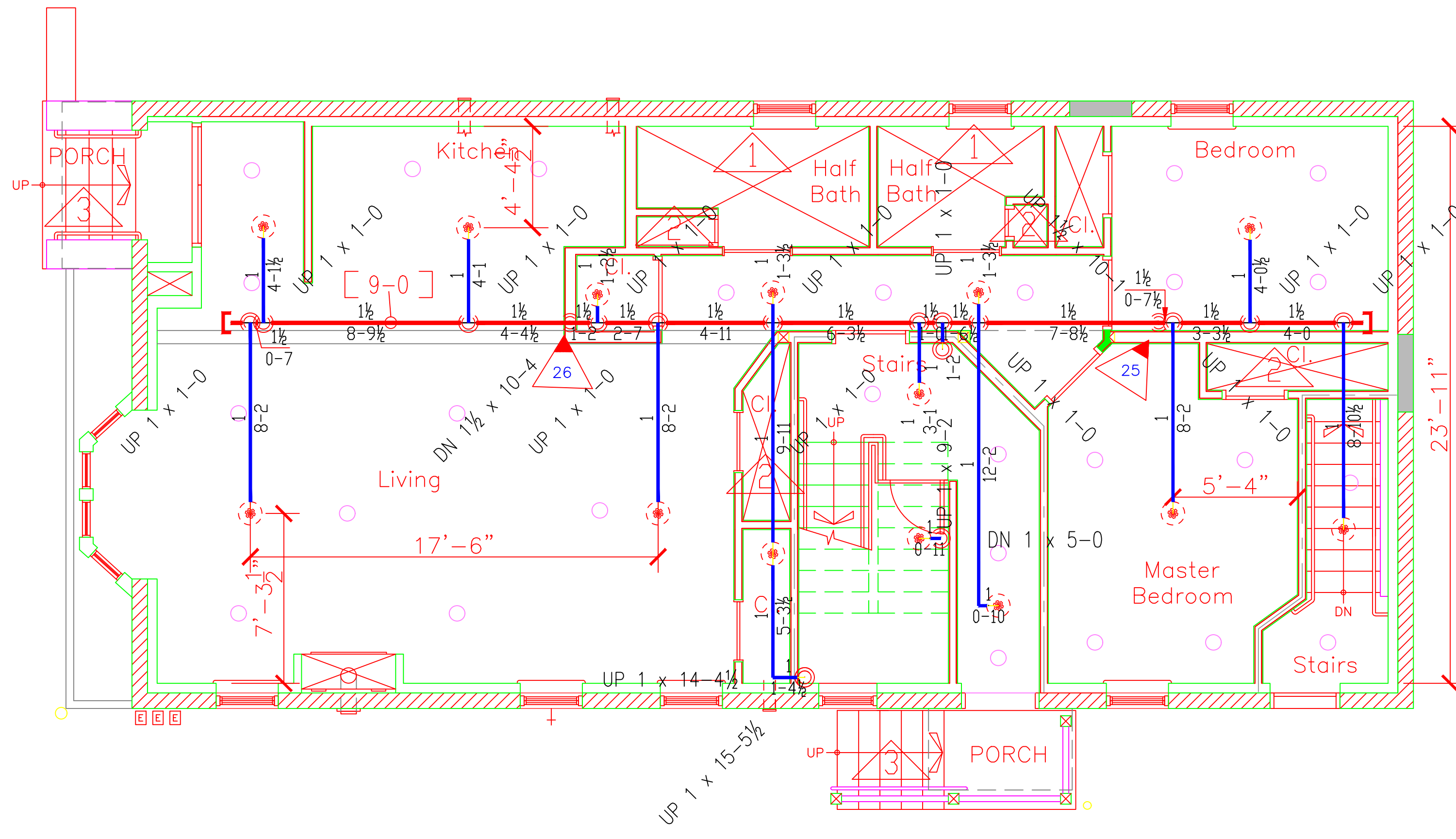
EXCEPTION NO. 3: SPRINKLERS SHALL NOT BE REQUIRED IN ANY PORCHES, BALCONIES, CORRIDORS, AND STAIRS THAT ARE OPEN TO ATTACHED.

EXCEPTION NO. 4: SPRINKLERS SHALL NOT BE REQUIRED IN ATTICS, PENTHOUSE EQUIPMENT ROOMS, CRAWL SPACES, FLOOR/CEILING SPACES, ELEVATOR SHAFTS, AND OTHER CONCEALED SPACES THAT ARE NOT USED OR INTENDED FOR LIVING PURPOSES OR STORAGE.

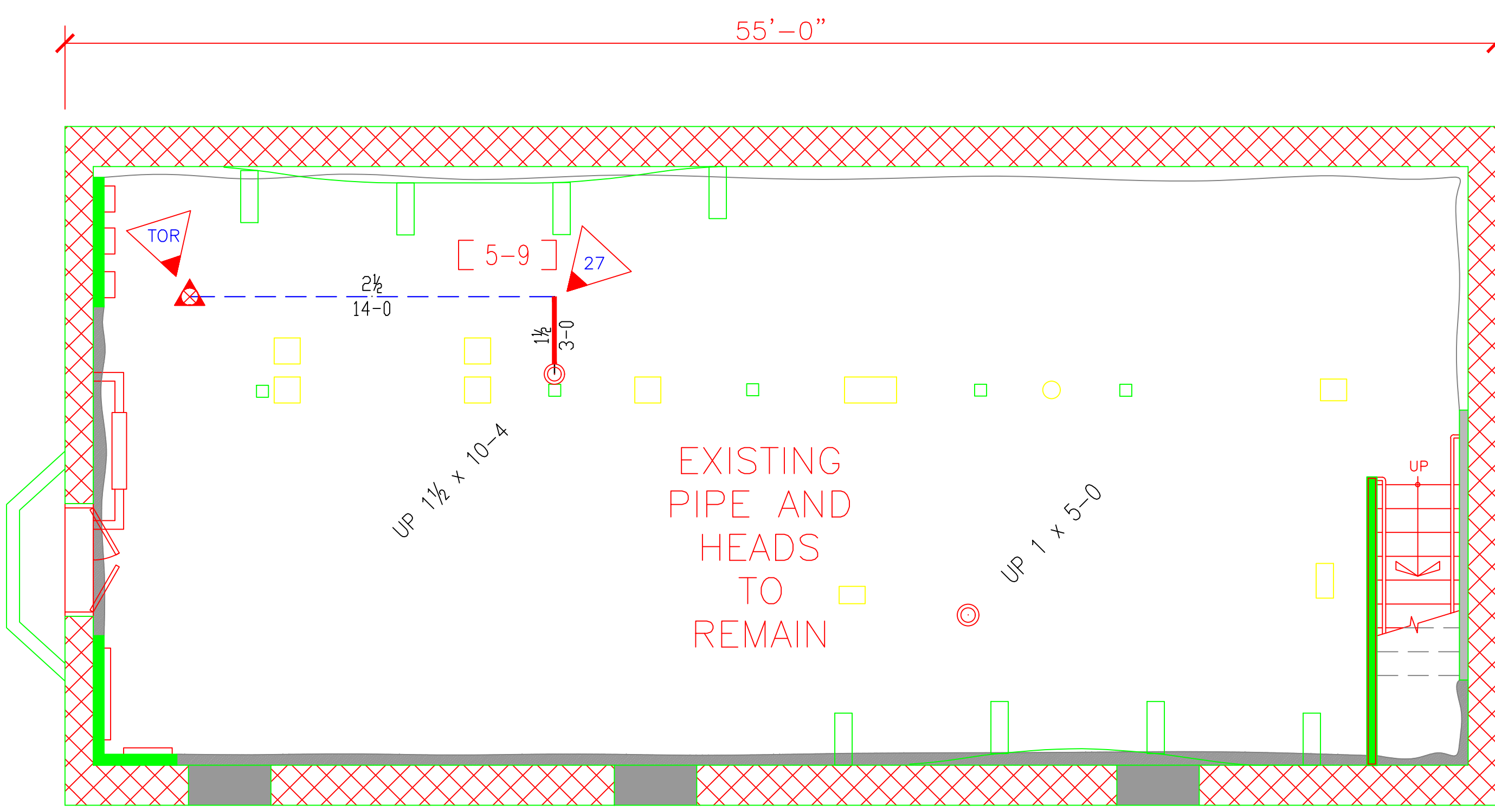
EXCEPTION NO. 5: SPRINKLERS SHALL NOT BE REQUIRED IN CLOSETS ON EXTERIOR BALCONIES REGARDLESS OF SIZE AS LONG AS THERE ARE NO DOORS OR UNPROTECTED PENETRATIONS FROM THE CLOSET DIRECTLY INTO THE DWELLING UNIT.

GENERAL NOTES:

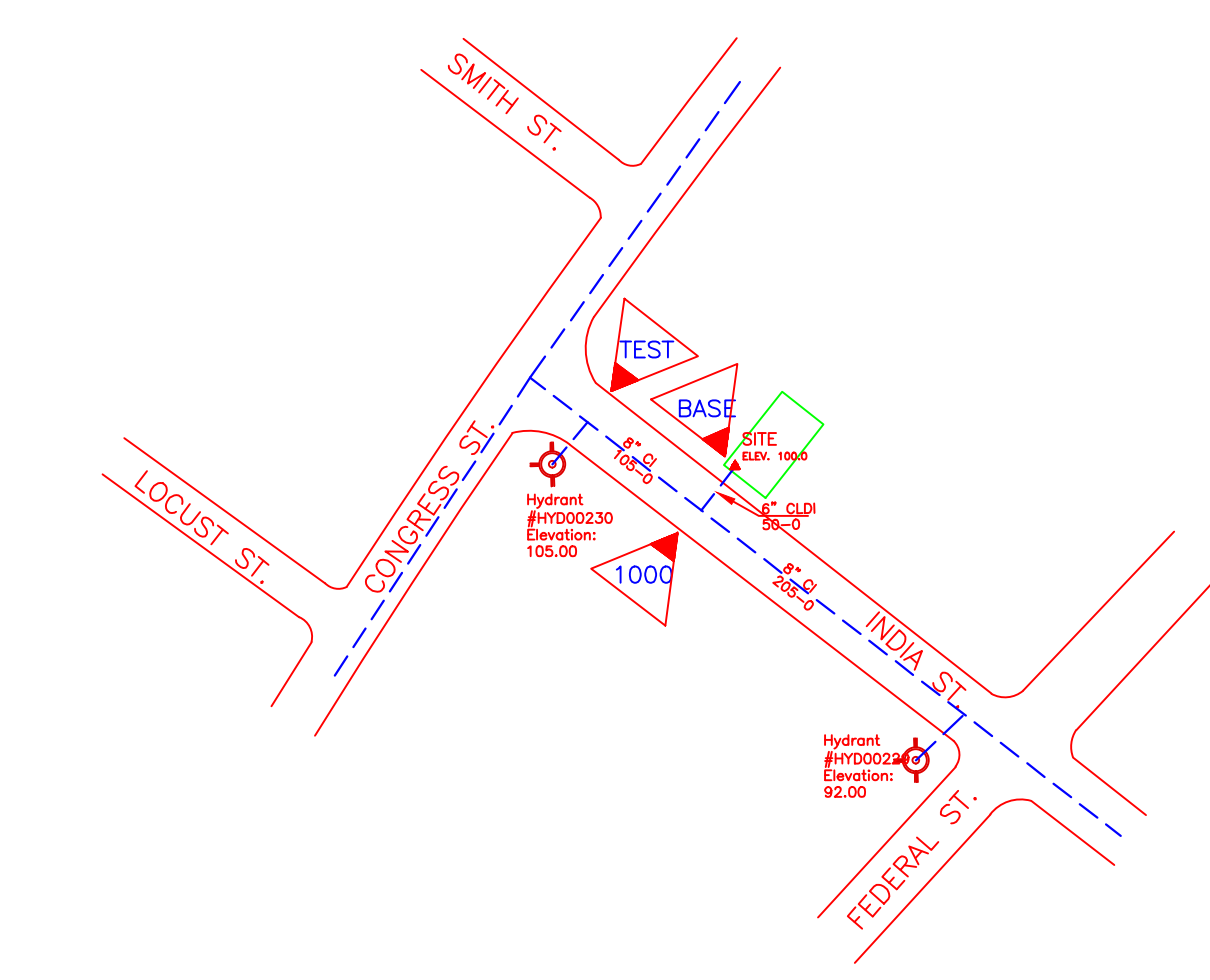
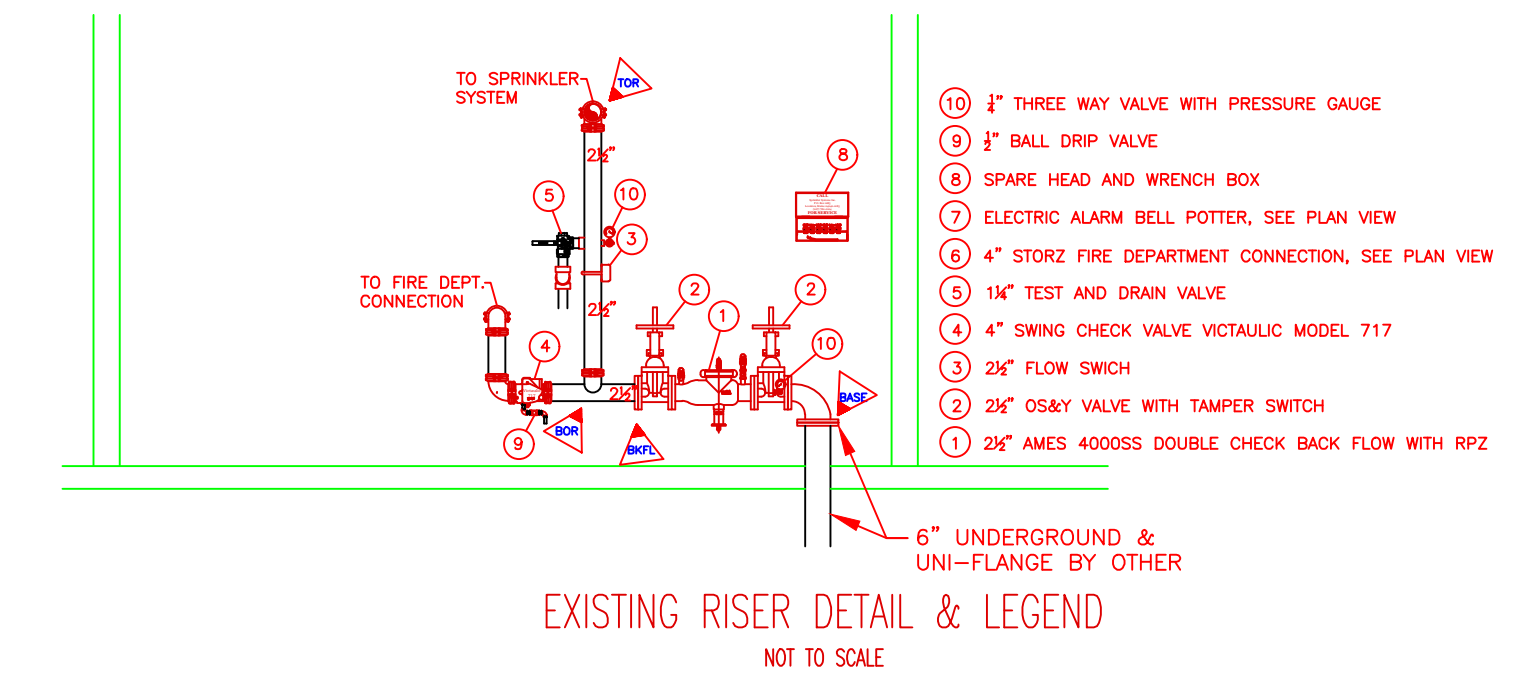
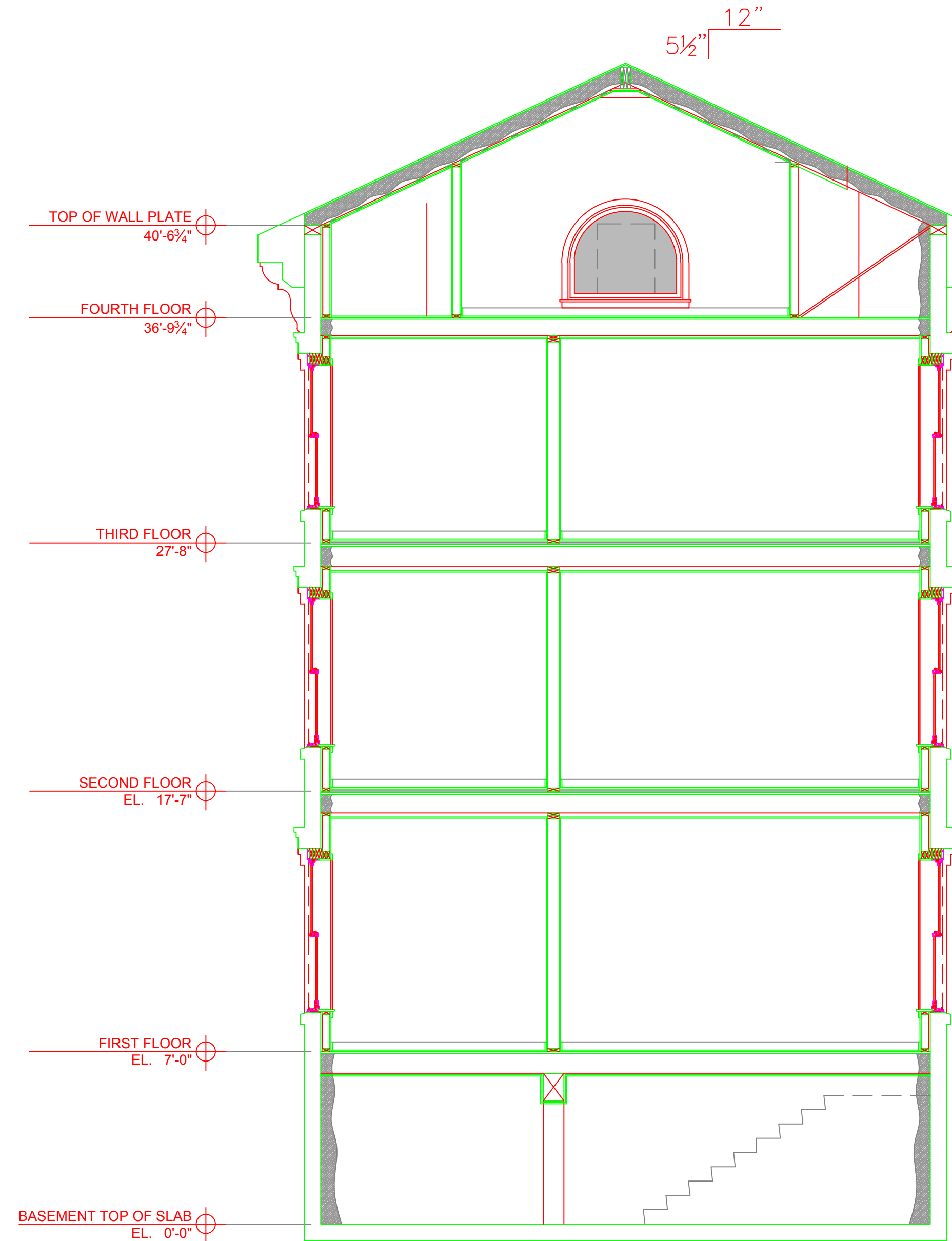
- IT IS THE BUILDING OWNERS RESPONSIBILITY TO PROVIDE ADEQUATE HEAT FOR ALL AREAS IN THE BUILDING PROTECTED BY WET SPRINKLER SYSTEMS AND FOR ALL WATER FILLED SUPPLY PIPES, VALVES AND SYSTEM RISERS IN ALL DRY PIPE SPRINKLER SYSTEMS.
- ALL NEW PIPING IS TO BE HYDROSTATICALLY TESTED AT NOT LESS THAN 200 PSI FOR 2 HOURS, OR AT 50 PSI IN EXCESS OF THE MAXIMUM PRESSURE, WHEN THE MAXIMUM PRESSURE TO BE MAINTAINED IS IN EXCESS OF 150 PSI. (PER NFPA 13)
- WHETHER OR NOT INDICATED ON DRAWINGS, THE FOLLOWING ITEMS ARE TO BE PROVIDED:
 - A) SPRINKLER HEAD CABINET WITH WRENCH (NFPA 13)
 - B) PROVISIONS FOR FLUSHING CONNECTIONS AND DRAINING OF ALL PIPE, INSPECTORS TEST CONNECTION SHALL BE PROVIDED FOR EACH SYSTEM
 - C) FOR WET PIPE SYSTEMS SEE NFPA 13
 - D) FOR DRY PIPE SYSTEMS SEE NFPA 13
- AIR PRESSURE SHALL BE MAINTAINED ON ALL DRY PIPE SYSTEMS BY AN APPROVED AUTOMATIC AIR COMPRESSOR OR PLANT AIR SYSTEM SPECIFICALLY APPROVED FOR AND CAPABLE OF AUTOMATICALLY MAINTAINING THE REQUIRED AIR PRESSURE. WET PIPE SYSTEMS SHALL BE PROVIDED WITH A RELIEF VALVE NOT LESS THAN 1/2" IN SIZE. (NFPA 13)
- ALL PIPE 1" SHALL BE SCHEDULE 40 STEEL WITH MALLEABLE IRON FITTINGS.
- ALL PIPE 1 1/4" AND LARGER, SHALL BE SCHEDULE 10 STEEL, WITH GROOVED COUPLINGS AND VICTAULOC® MECHANICAL FITTINGS OR EQUIVALENT.
- ALL MECHANICAL TRADES ARE TO COORDINATE THEIR WORK WITH SPRINKLER WORK AS SHOWN ON THESE PLANS.
- ALL HANGERS AND LOCATIONS ARE TO BE IN ACCORDANCE WITH N.F.P.A. 13.
- STORAGE PLACED ON TOP OF FREEZER/COOLERS MUST BE A MINIMUM OF 18" BELOW SPRINKLER DEFLECTORS.
- NO STORAGE ABOVE 12'-0"
- NO PIPING IS TO BE FITTED IN ACCORDANCE WITH N.F.P.A. 13.
- HYDRAULIC DATA REFERENCE POINTS: (12) BELOW DECK (12) CENTER LINE OF PIPE ABOVE FINISH FLOOR (12'-0") BELOW DECK (12) PROTECTIVE CAPS ARE TO REMAIN ON THE SPRINKLER HEADS UNTIL AFTER CEILING ARE INSTALLED.
- THE SCOPE OF WORK UNDER THIS CONTRACT IS TO DESIGN AND INSTALL A WET SPRINKLER SYSTEM PER NFPA 13.



FIRST FLOOR SPRINKLER PLAN
SCALE: 1/4" = 1'-0"
FINISH FLOOR ELEV. 107.0'



BASEMENT SPRINKLER PLAN
SCALE: 1/4" = 1'-0"
FINISH FLOOR ELEV. 100.0'

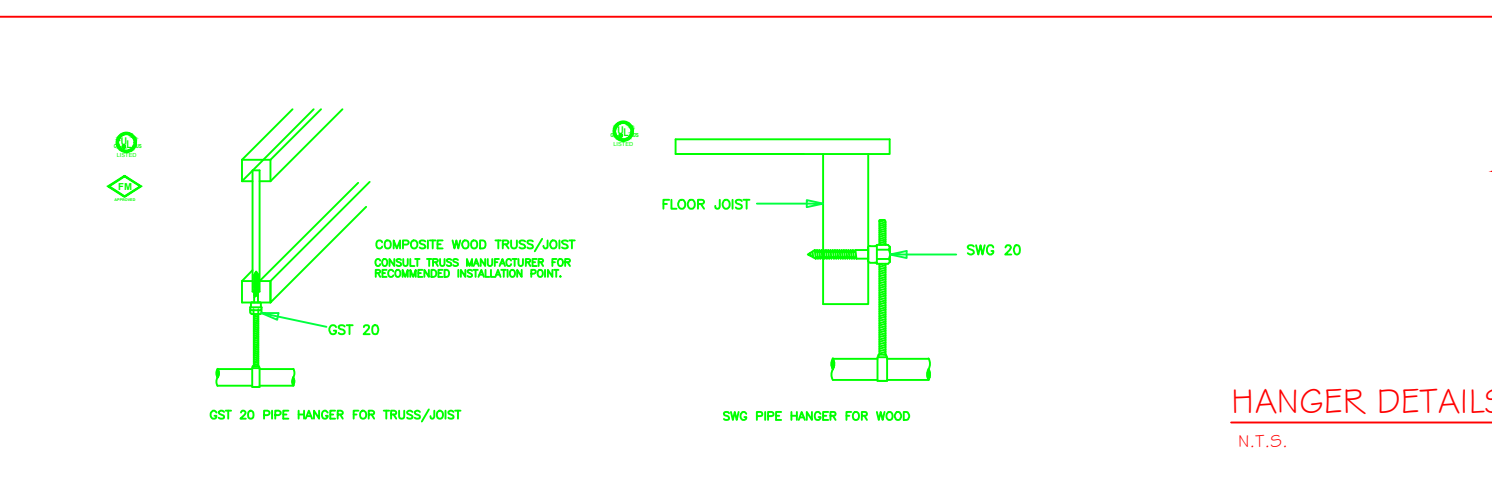


SITE PLAN
SCALE: "NTS"
FINISH FLOOR ELEV. 100.0'

HYDRAULIC DATA NAMEPLATE		HYDRAULIC DATA NAMEPLATE	
This Building is protected by a hydraulically designed Automatic Sprinkler System		This Building is protected by a hydraulically designed Automatic Sprinkler System	
Location	AREA-1	Location	AREA-2
No. of Sprinkler	4	No. of Sprinkler	4
Basis of design		Basis of design	
1. Density	.05 gpm/ft ²	1. Density	.15 gpm/ft ²
2. Design area of discharge	4 HEADS _{FT} ²	2. Design area of discharge	4 HEADS _{FT} ²
System Demand		System Demand	
1. Water Flow Rate		1. Water Flow Rate	
Base/Pump	73.56 gpm	Base/Pump	63.41 gpm
2. Residual Pressure		2. Residual Pressure	
Base/Pump	71.366 psi	Base/Pump	71.571 psi
CUSHION = 9.55 psi		CUSHION = 9.36 psi	
NOT MOST REMOTE		MOST REMOTE	

WATER DATA
STATIC 81 PSI
RESIDUAL 71 PSI
FLOW 1255 CPM
BY PORTLAND WATER DISTRICT
DATE 5/5/16
HYDRANT ELEV: 100.00' +/-

1. Type of Hazard	OH2	2. Deflector Distance	PER SPEC
3. Pipe Type Used	BLK_SCH_10/40	4. Sprinkler Area	PER SPEC
5. Type of Construction	NON-COMBUSTIBLE		
6. Maximum Spacing Allowed	PER NFPA 13		
7. PIPE SIZING METHOD: PIPE SCHEDULE	<input type="checkbox"/>	HYDRAULICALLY CALCULATED	<input checked="" type="checkbox"/>
8. ALL HANGERS AND LOCATIONS TO BE IN ACCORDANCE WITH N.F.P.A. PAMPHLET NO. 13			
9. HIGH DEGREE TEMPERATURE SPRINKLER HEADS TO BE INSTALLED IN ACCORDANCE WITH N.F.P.A. PAMPHLET NO. 13			



ABBREVIATIONS	
B	Bottom of Beam
D	Bottom of Deck
P	Bottom of Pipe
HV	Head Valve
N, A, C	Nipple and Cap
Net in Contract	Net to Scope
NIS	Net in Contract
OS&Y	Open Bar Joints
PRV	Pressure Red Valve
RM	Roof Membrane
Standpipe	Standpipe
TOP	Top of Beam
TOP	Top of Pipe
TOP	Top of Slab
UNAS	Unless Otherwise Noted
CL	Centerline
NAS	No Automatic Sprinklers
OTA	Open to Above

CONTRACT RESPONSIBILITIES	
ITEM	FPC OTHERS
STREET CORN	
LOGG MAN	
EXCAVATION	
FLUSHING	
WIRING	
PAINTING	
TAMPER SWITCHES	
FLOW SWITCHES	
STREET CORN	

SPRINKLER HEAD LEGEND										
SYMBOL	MAKE	MODEL	SIN	FINISH	TYPE	TEMP	NPT	ORIFICE	K-FACTOR	TOTAL
	RELIABLE	RFC49	RA1425	WHITE	CONCEAL	165° F	1/2"	7/16"	4.9	37
	RELIABLE	F1FR 56	RA1425	BRONZE	UPRIGHT	200° F	1/2"	1/2"	5.6	7
	RELIABLE	F1FR 44	R3531	WHITE	HORIZ. SIDEWALL	155° F	1/2"	7/16"	4.4	5
	RELIABLE	F1FR 56	RA1435	BRONZE	HORIZ. SIDEWALL	155° F	1/2"	1/2"	5.6	4
TOTAL										53

SUBMITTALS		
SENT TO	DATE SENT	DATE RECEIVED
I.S.O.	03/30/12	
F.M.		
L.M.		
I.R.I.		
L.A.		
STATE FIRE		
TAMPER SWITCHES		
LOCAL FIRE		
LOCAL WATER		
OWNER		

LICENSE# 093 R.M.S.# 442 PERMIT # ????

P.O. BOX 1285 LEWISTON MAINE 04243-1285

107 India Street 107 India Street Portland, ME 04101		SCALE AS NOTED
DRAWN BY RDO		CHECKED BY CDS
DATE 5/12/2016		TOTAL SPKRS ON JOB
SHEET# 1 of 1		JOB# 16025

SUBMITTAL COPY