

© 2016 RYAN SENATORE ARCHITECTURE

RESIDENCES
107 INDIA STREET
PORTLAND, MAINE



RYAN SENATORE ARCHITECTURE
565 CONGRESS STREET
PORTLAND, MAINE 04101
207-747-5159
senatorearchitecture.com

CONSULTANTS:
STRUCTURAL:
Structural Integrity
77 Oak Street
Portland, ME 04101
207-774-4614

REVISIONS:

DATE: FEBRUARY 5, 2016

PROJECT No.

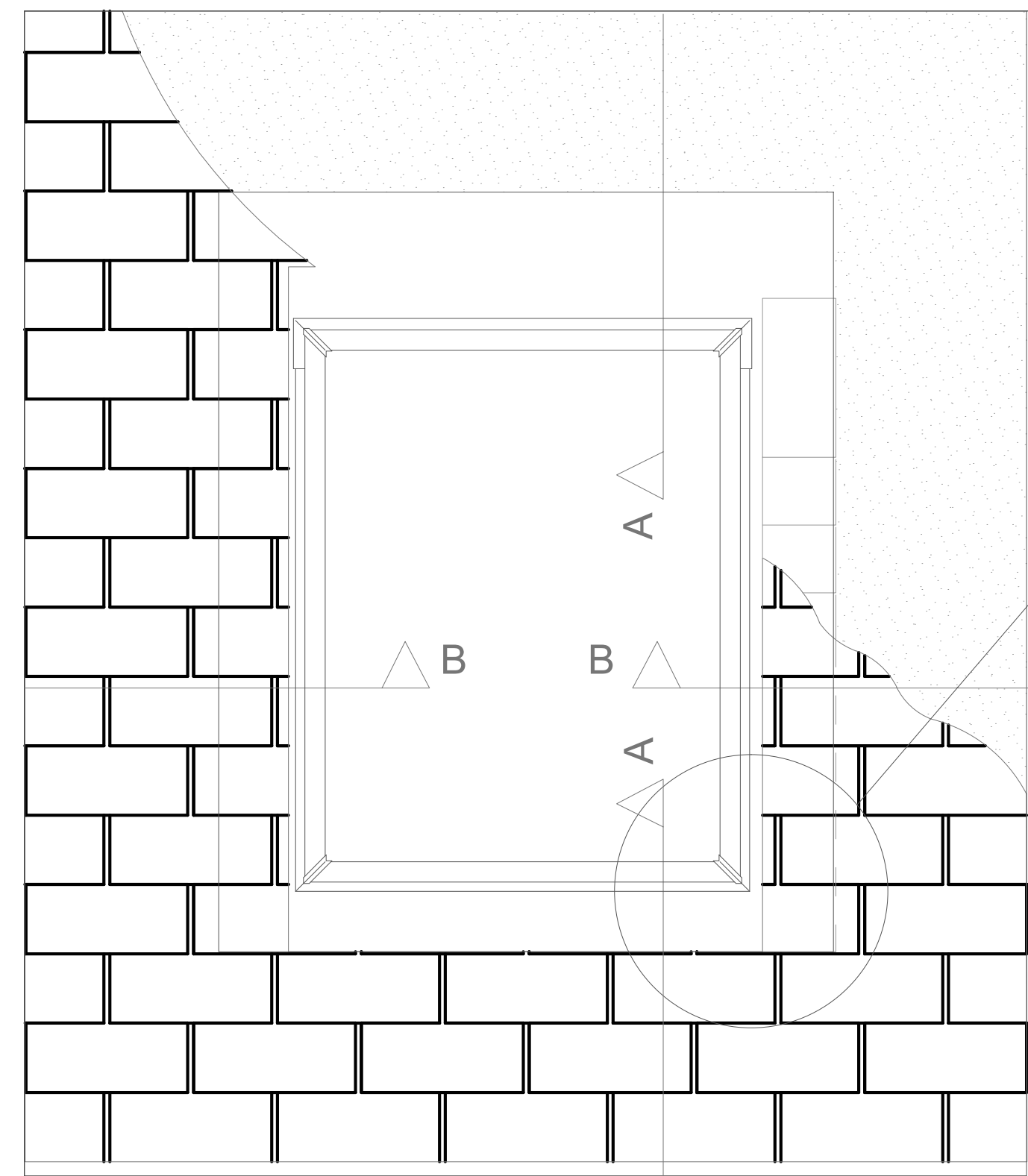
DRAWN BY: RRT

CHECKED BY: RJS

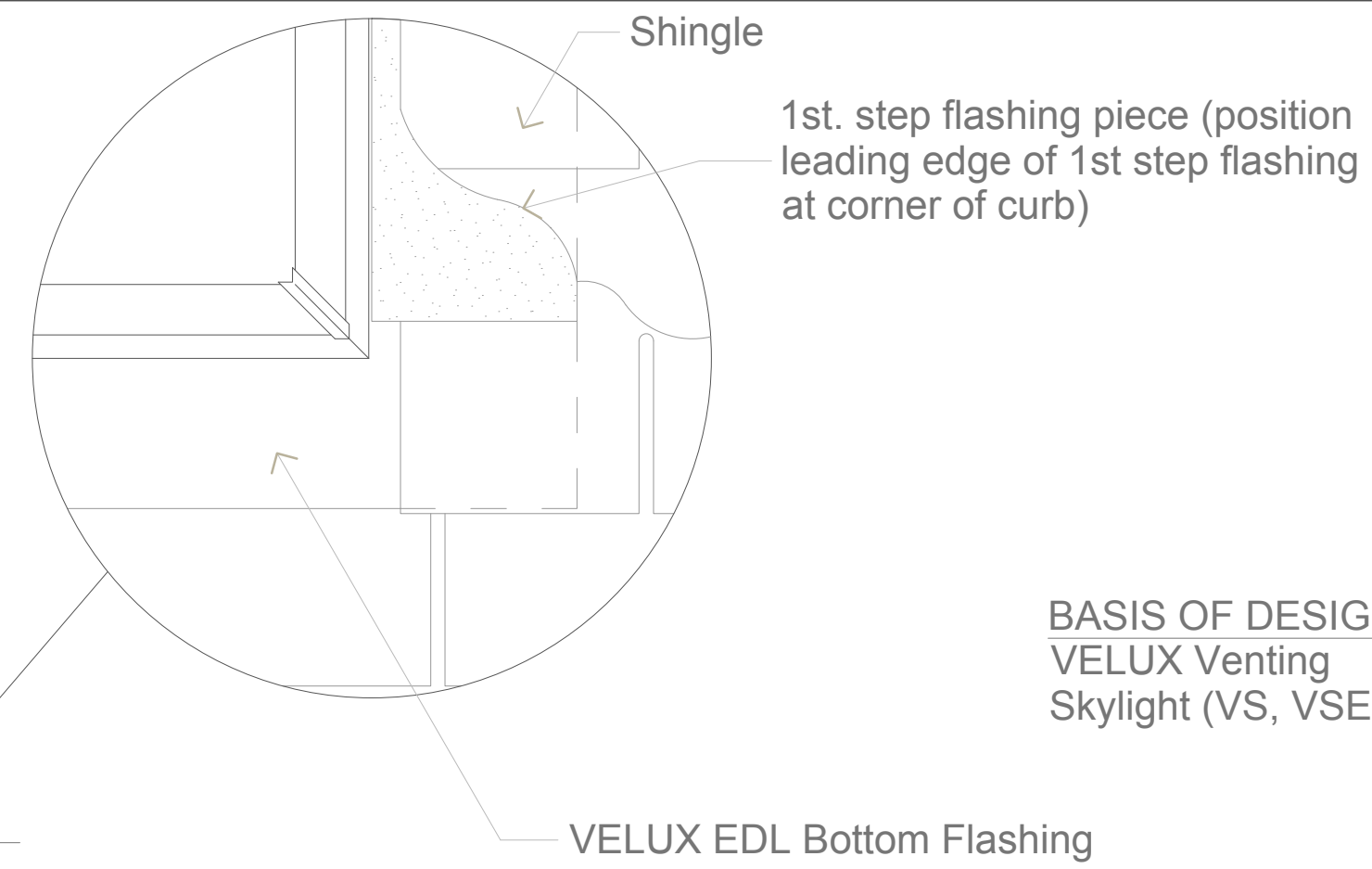
SCALE: AS NOTED

SHEET TITLE:
DETAILS

A5-6



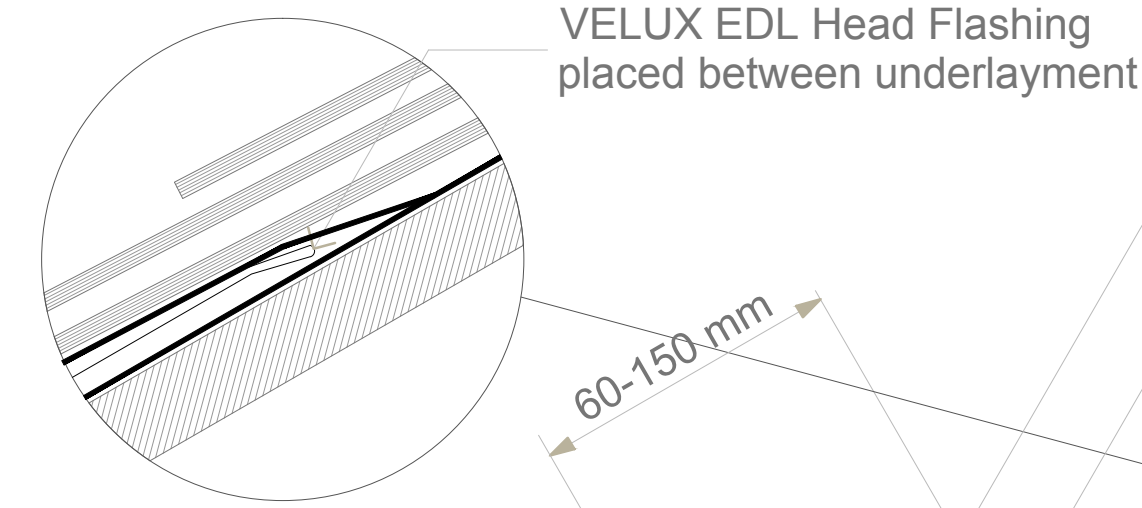
ELEVATION



1st. step flashing piece (position leading edge of 1st step flashing at corner of curb)

VELUX EDL Bottom Flashing

BASIS OF DESIGN:
VELUX Venting Skylight (VS, VSE)



VELUX EDL Head Flashing placed between underlayment

60-150 mm

VELUX EDL Head Flashing placed between underlayment

Underlayment

Sheathing

VS
VSE

EDL

Asphalt shingles

15°-90°

Insulation - place carefully around window

Headers or blocking as required per code(s)

Horizontal soffit lining

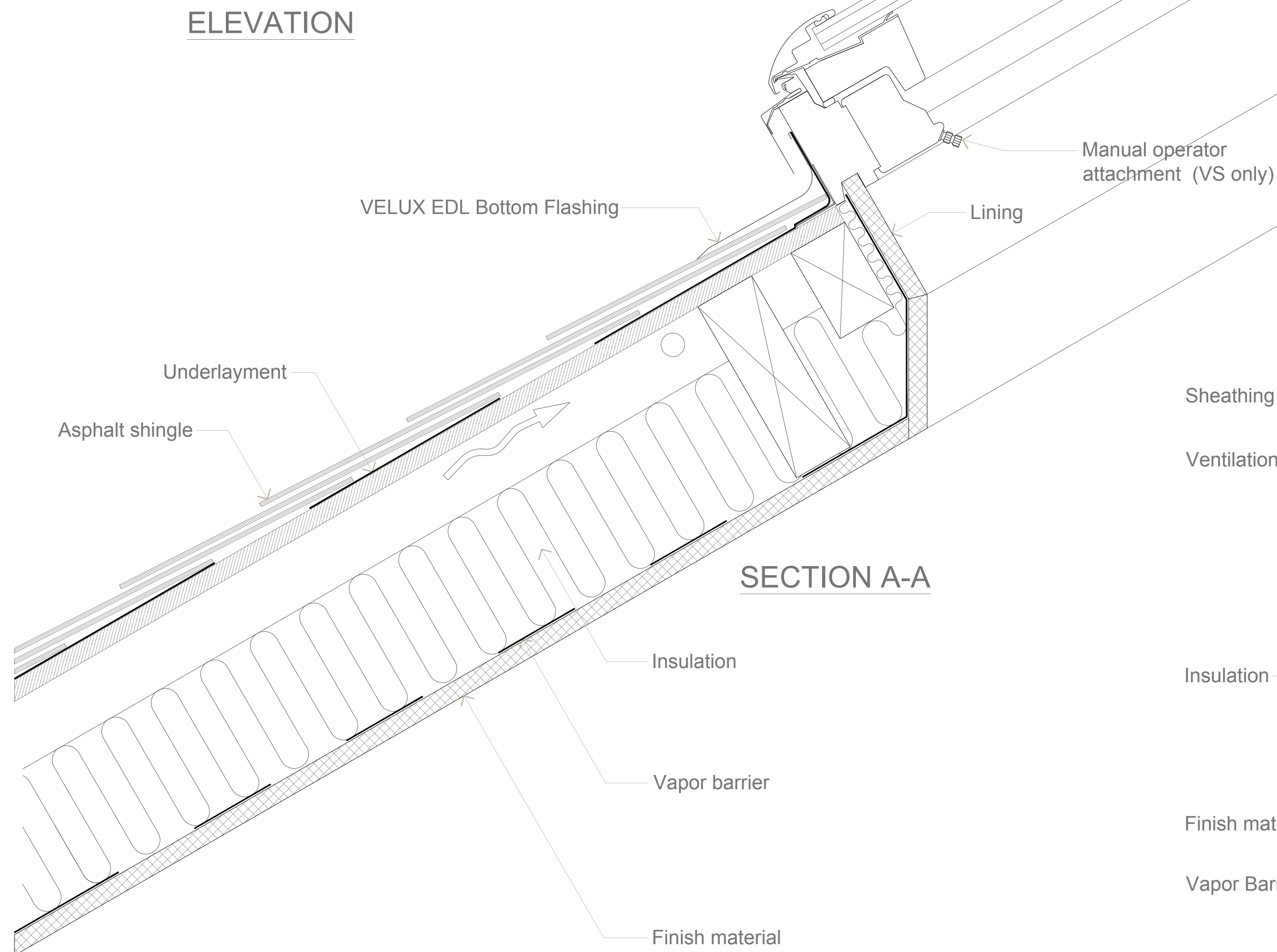
6 mm Max.
1/4" Max.

Underlayment

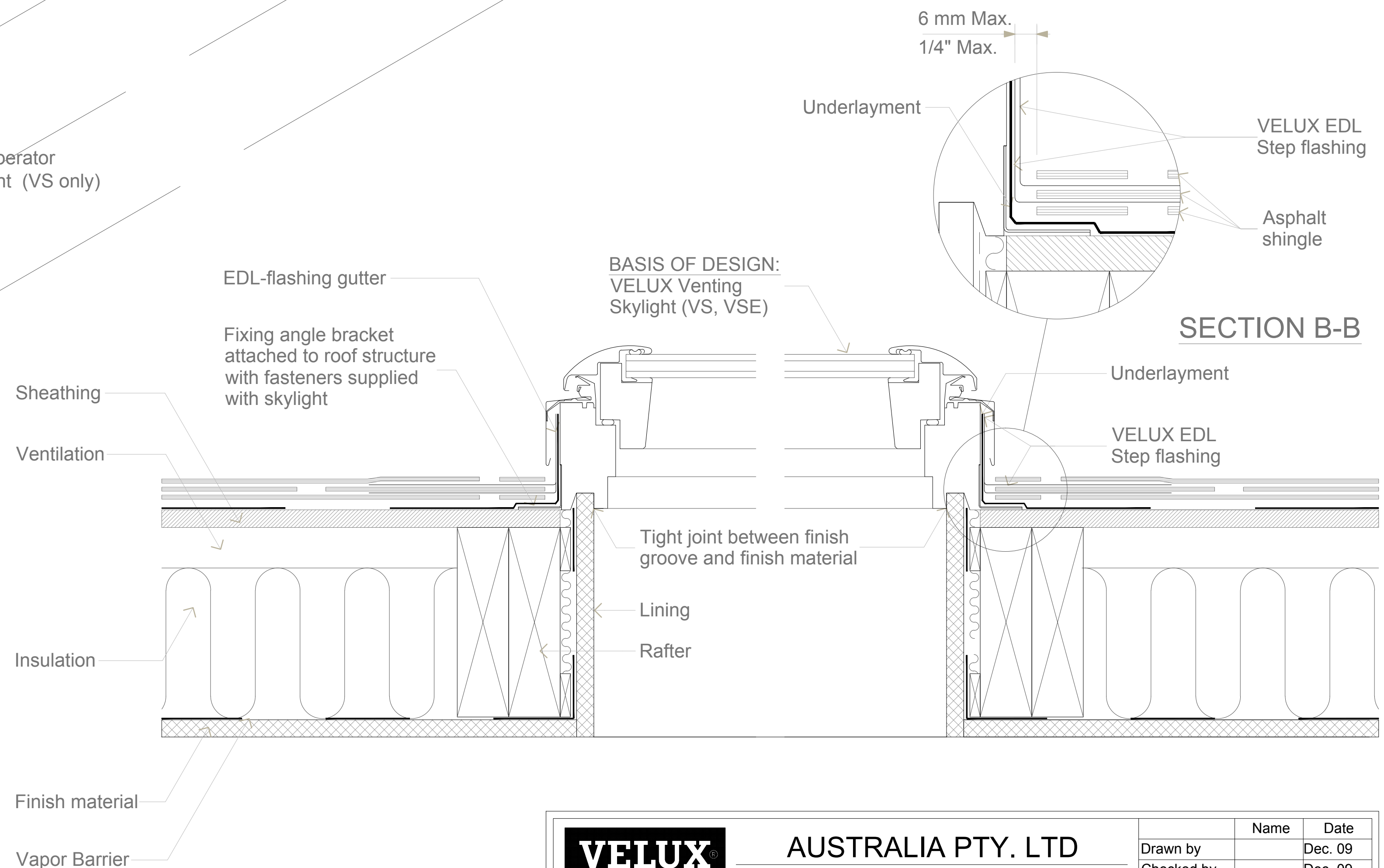
VELUX EDL Step flashing

Asphalt shingle

SECTION B-B



SECTION A-A



BASIS OF DESIGN:
VELUX Venting Skylight (VS, VSE)

Tight joint between finish groove and finish material

Lining
Rafter

VELUX

AUSTRALIA PTY. LTD

Sky-Product Management

+612 8565 6000

VS, VSE - Venting Skylight and EDL flashing in Shingle Roof

Name	Date
Drawn by	Dec. 09
Checked by	Dec. 09
Drawing No.	

This drawing is an instrument of service and is provided for informational use only.

© 2009 VELUX GROUP

© VELUX is a registered trademark