

© 2016 RYAN SENATORE ARCHITECTURE

RESIDENCES
107 INDIA STREET
PORTLAND, MAINE



RYAN SENATORE
ARCHITECTURE
565 CONGRESS STREET
PORTLAND, MAINE 04101
207-747-5159
senatorearchitecture.com

CONSULTANTS:
STRUCTURAL:
Structural Integrity
77 Oak Street
Portland, ME 04101
207-774-4614

REVISIONS:

DATE: FEBRUARY 5, 2016

PROJECT No.

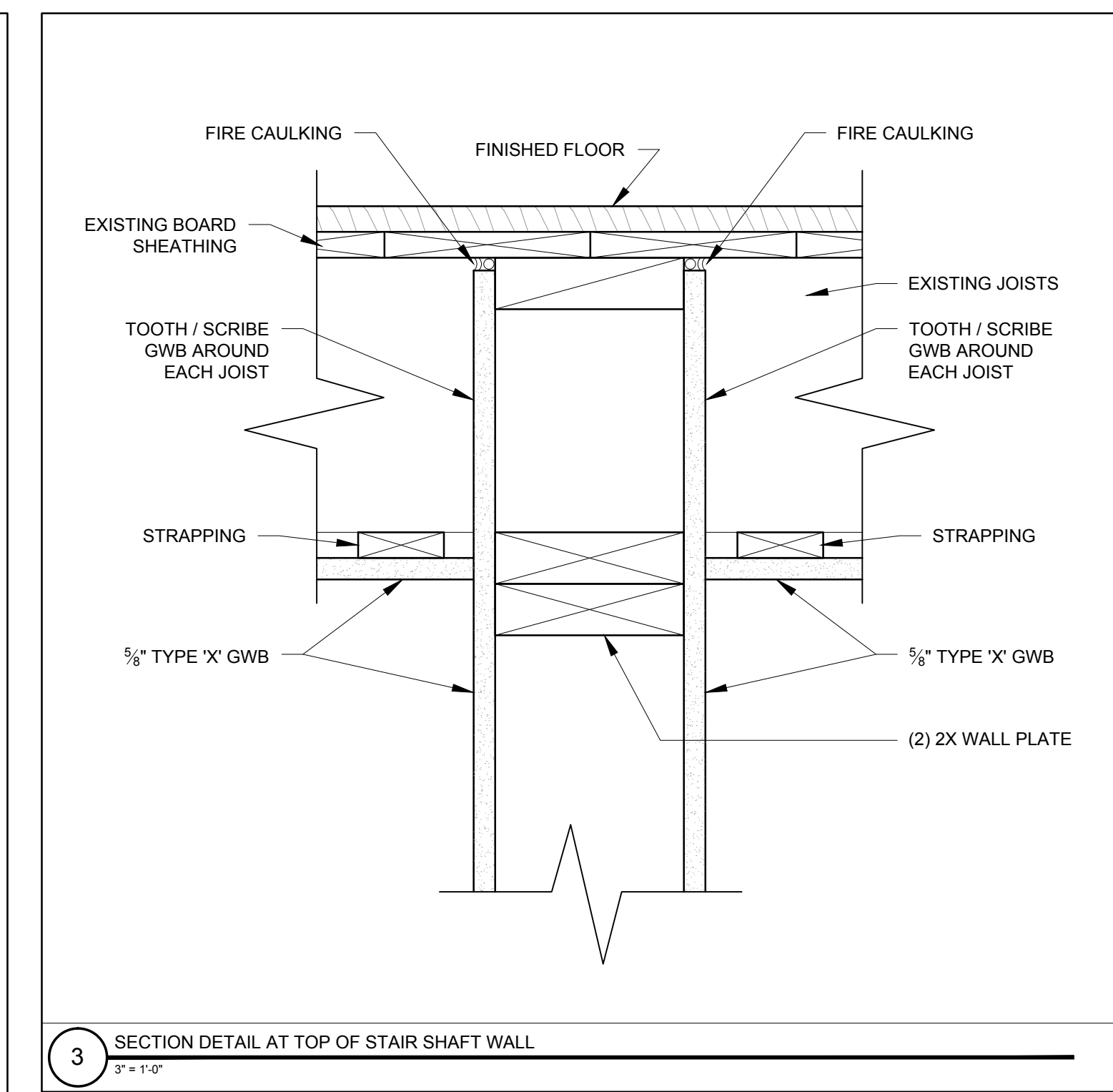
DRAWN BY: RRT

CHECKED BY: RJS

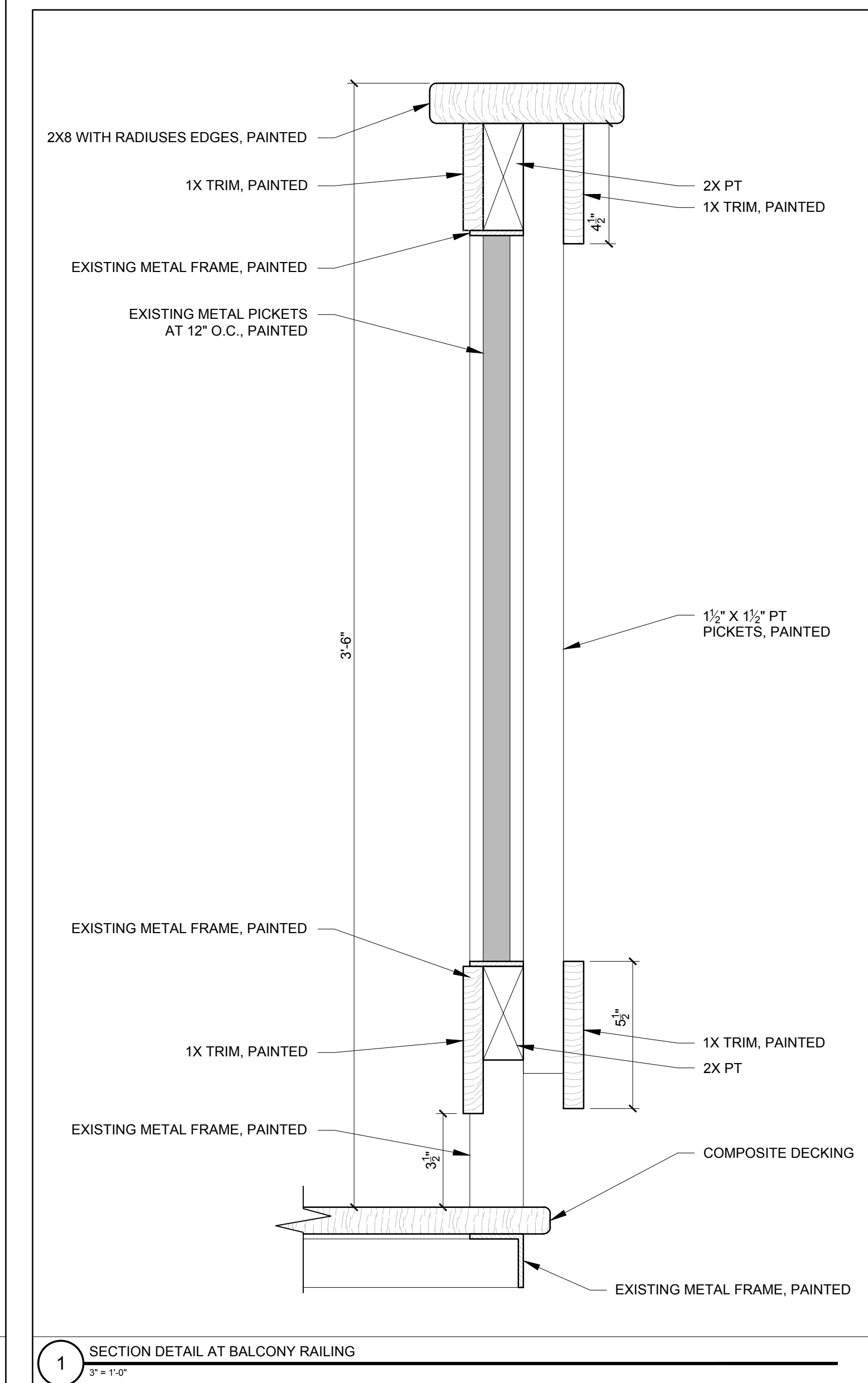
SCALE: AS NOTED

SHEET TITLE:
DETAILS

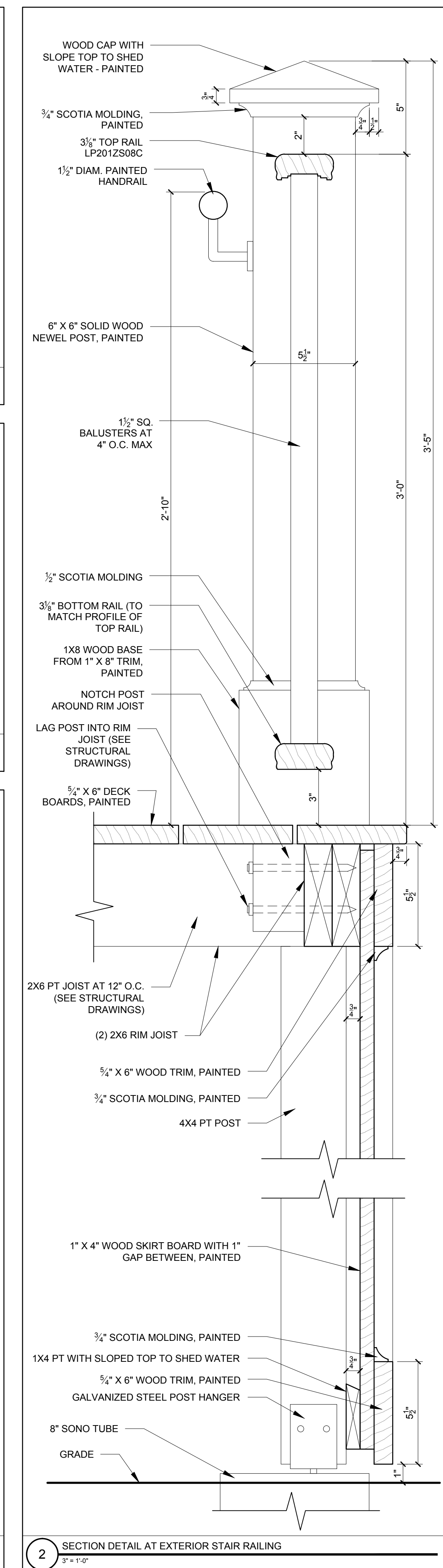
A5-1



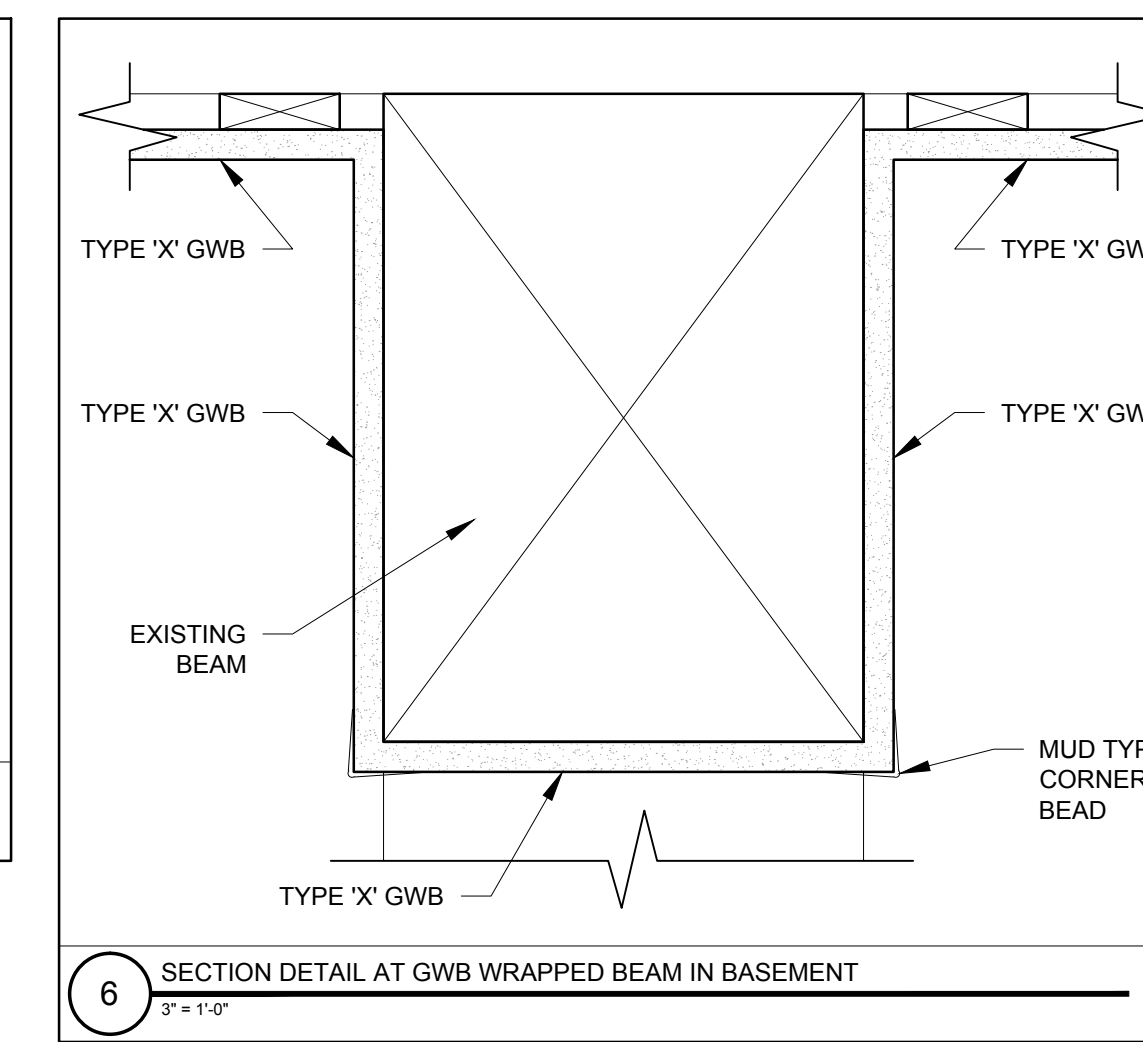
3 SECTION DETAIL AT TOP OF STAIR SHAFT WALL
3" = 1'-0"



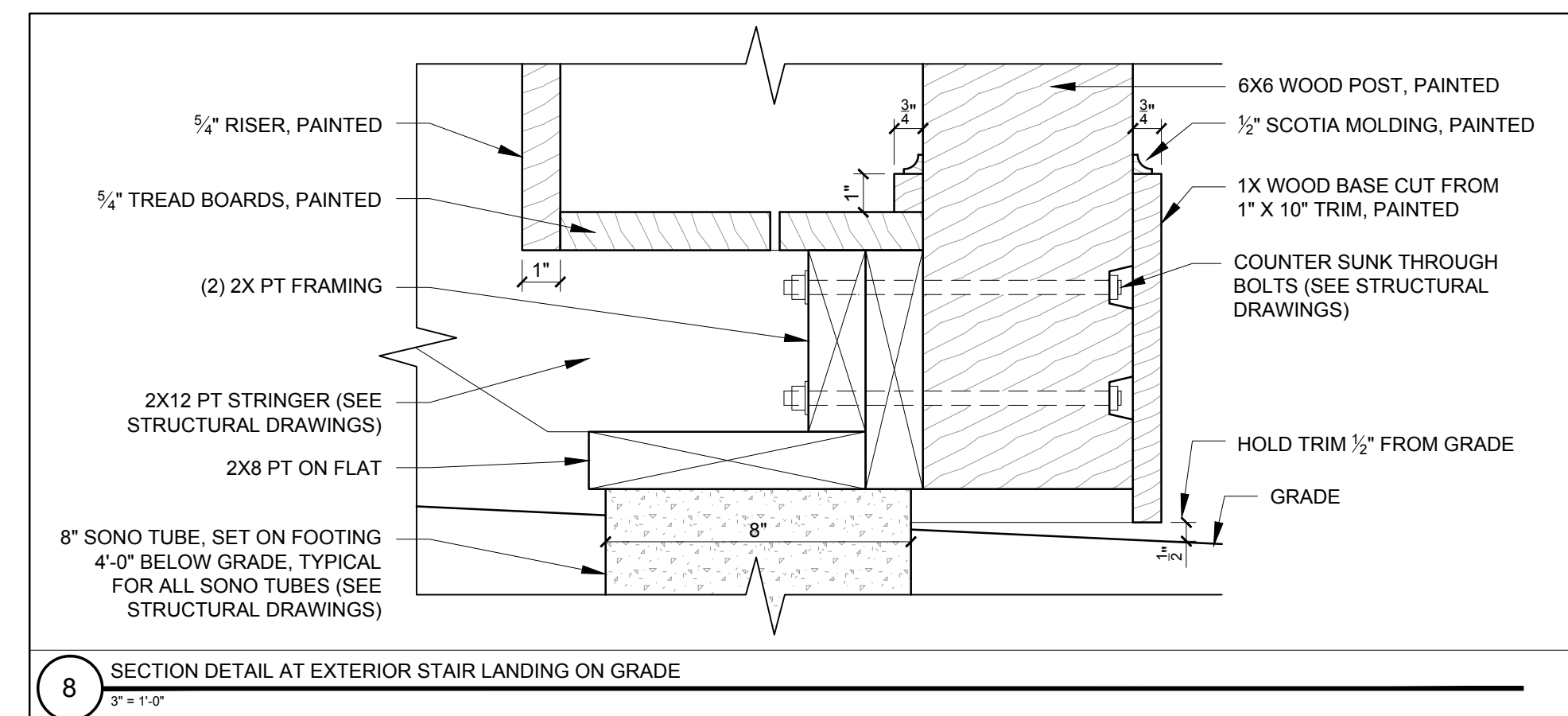
1 SECTION DETAIL AT BALCONY RAILING
3" = 1'-0"



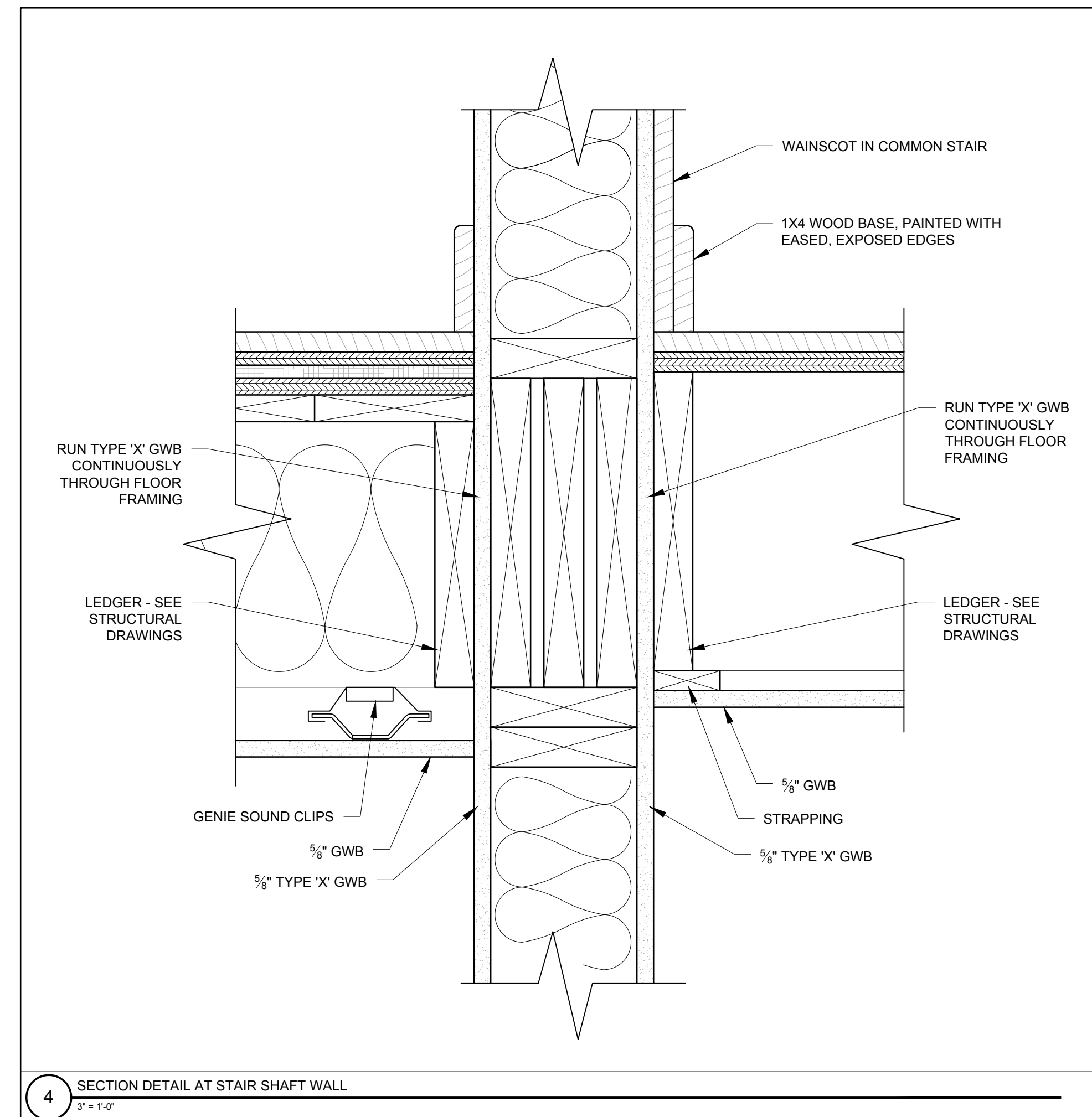
2 SECTION DETAIL AT EXTERIOR STAIR RAILING
3" = 1'-0"



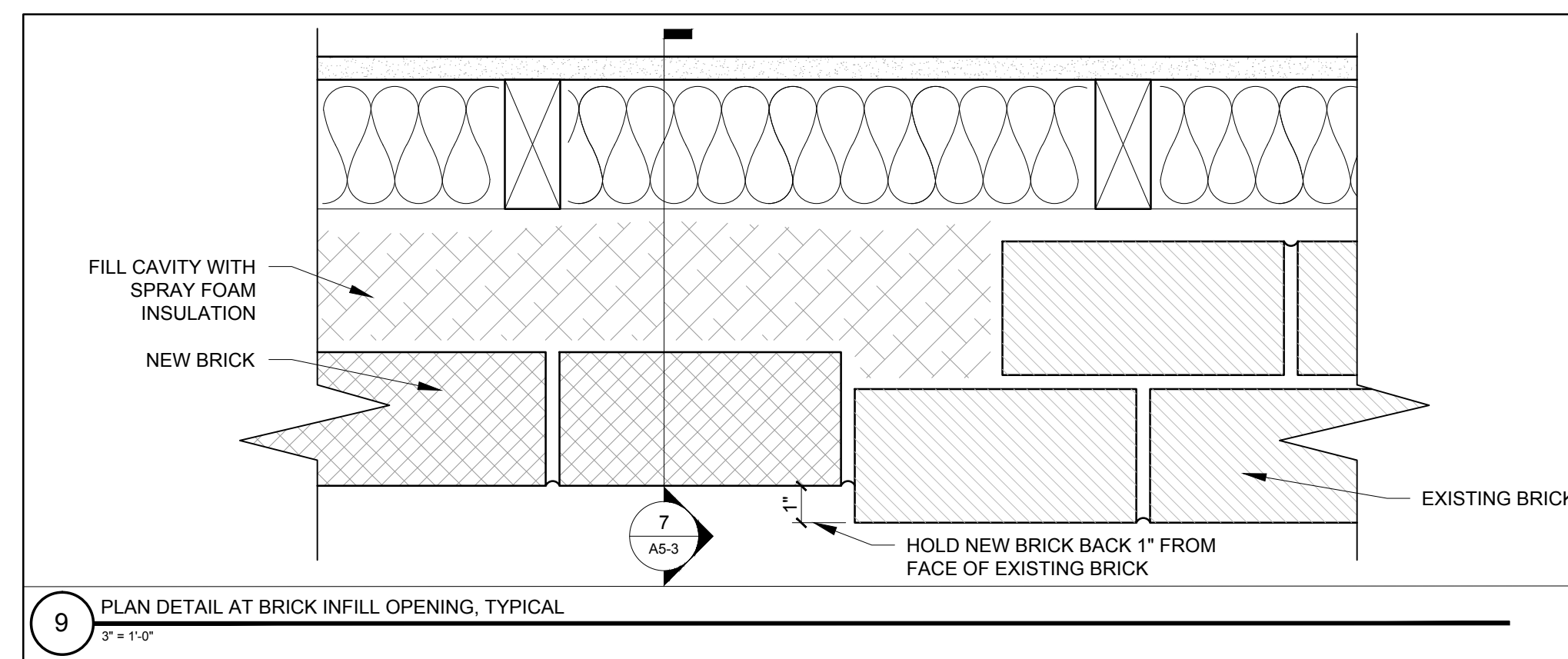
6 SECTION DETAIL AT GWB WRAPPED BEAM IN BASEMENT
3" = 1'-0"



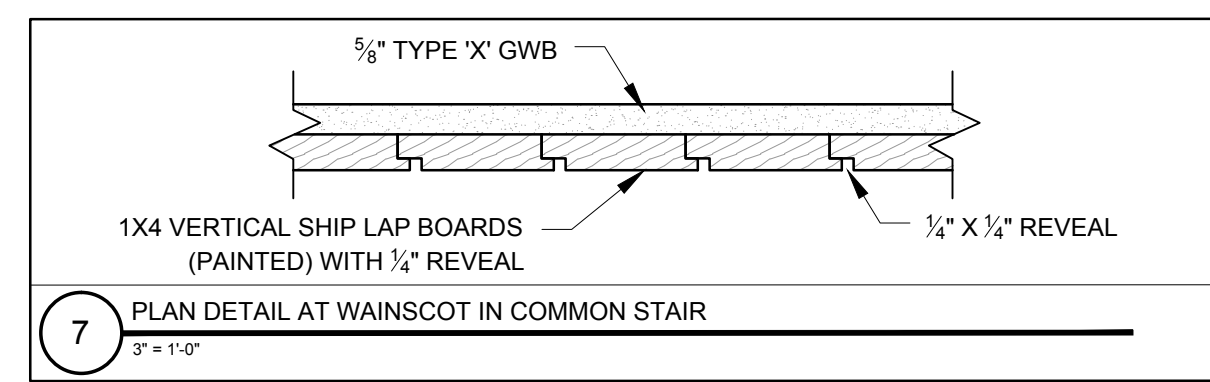
8 SECTION DETAIL AT EXTERIOR STAIR LANDING ON GRADE
3" = 1'-0"



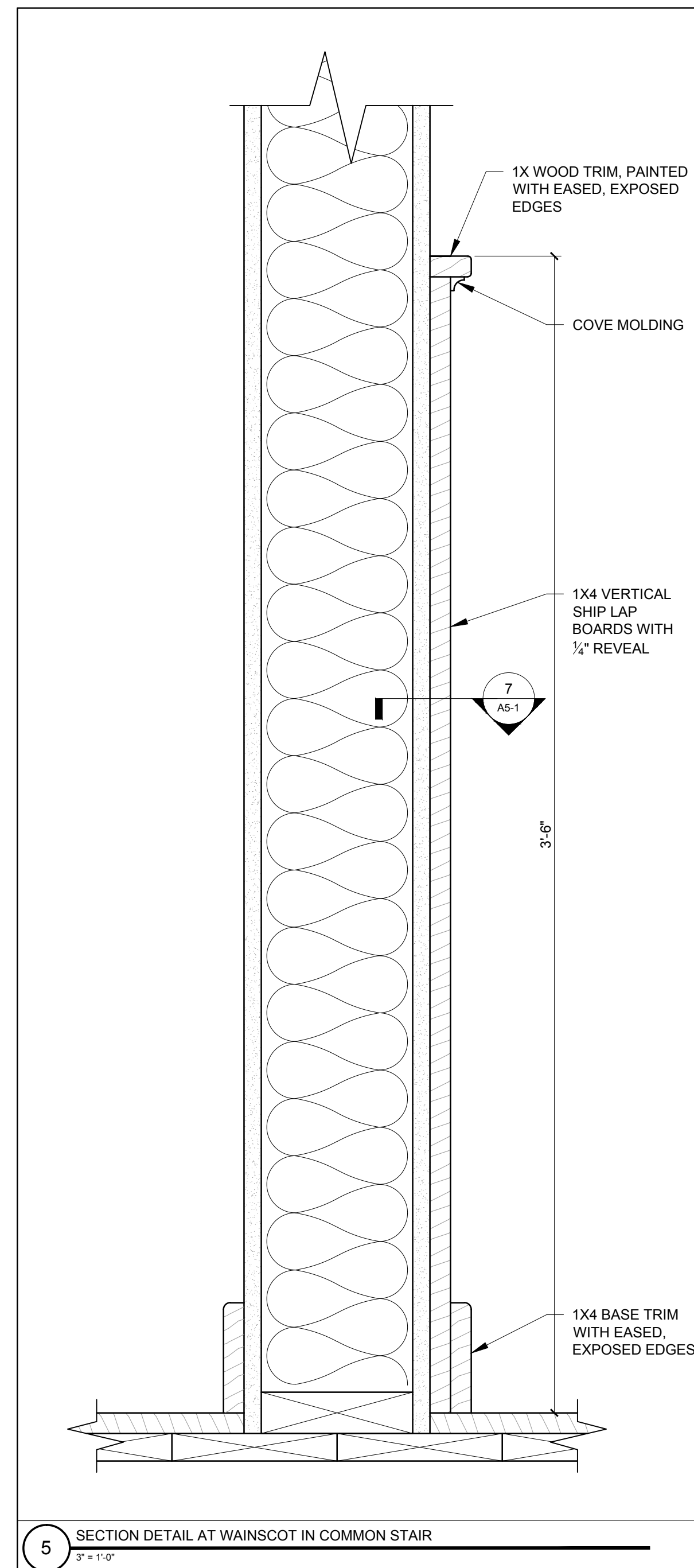
4 SECTION DETAIL AT STAIR SHAFT WALL
3" = 1'-0"



9 PLAN DETAIL AT BRICK INFILL OPENING, TYPICAL
3" = 1'-0"



7 PLAN DETAIL AT WAINSCOT IN COMMON STAIR
3" = 1'-0"



5 SECTION DETAIL AT WAINSCOT IN COMMON STAIR
3" = 1'-0"