

© 2016 RYAN SENATORE ARCHITECTURE

**RESIDENCES**  
107 INDIA STREET  
PORTLAND, MAINE



RYAN SENATORE  
**ARCHITECTURE**  
565 CONGRESS STREET  
PORTLAND, MAINE 04101  
207-747-5159  
senatorearchitecture.com

CONSULTANTS:  
STRUCTURAL:  
Structural Integrity  
77 Oak Street  
Portland, ME 04101  
207-774-4614

REVISIONS:

DATE: FEBRUARY 5, 2016

PROJECT No.

DRAWN BY: RRT

CHECKED BY: RJS

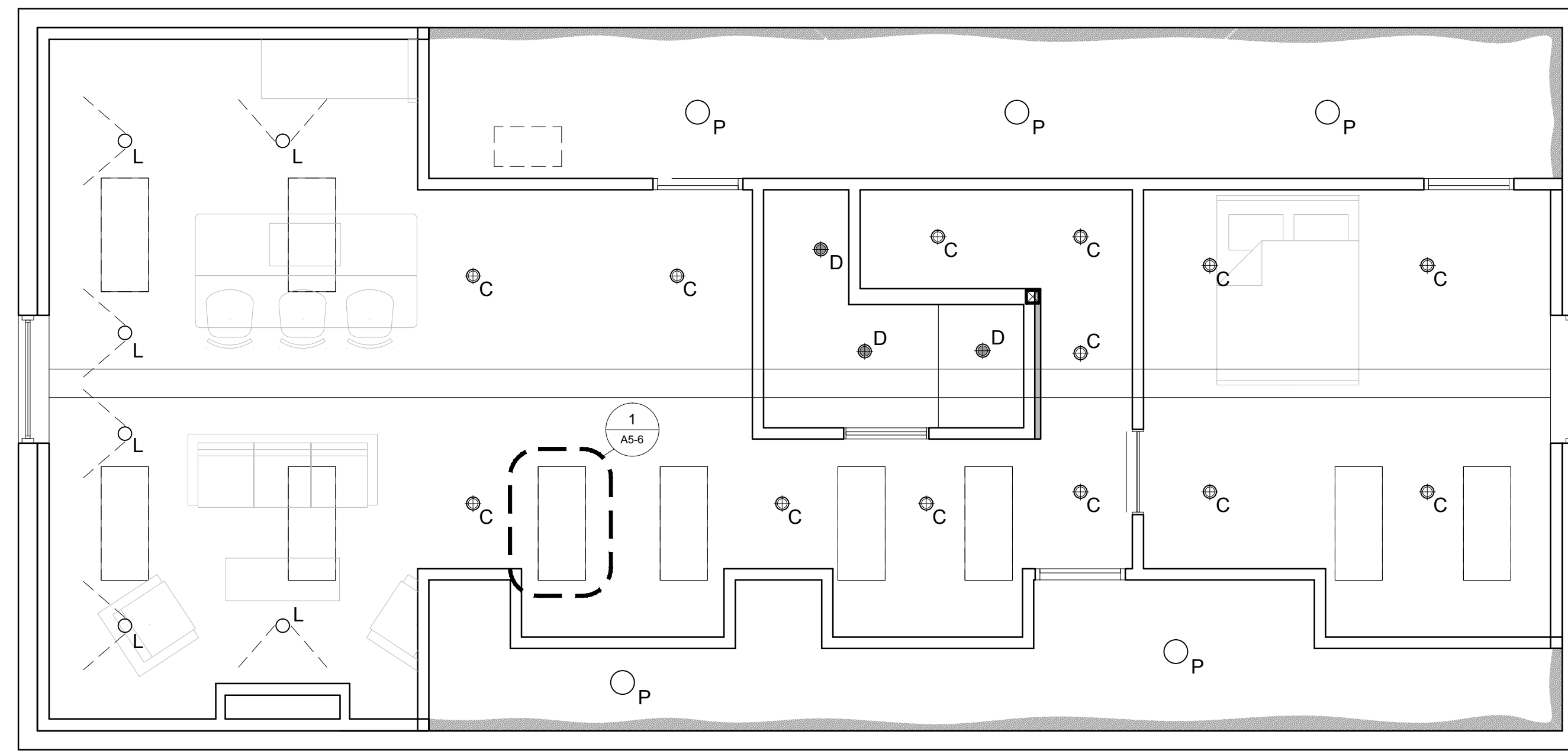
SCALE: AS NOTED

SHEET TITLE:  
THIRD AND  
FOURTH FLOOR -  
REFLECTED  
CEILING PLAN

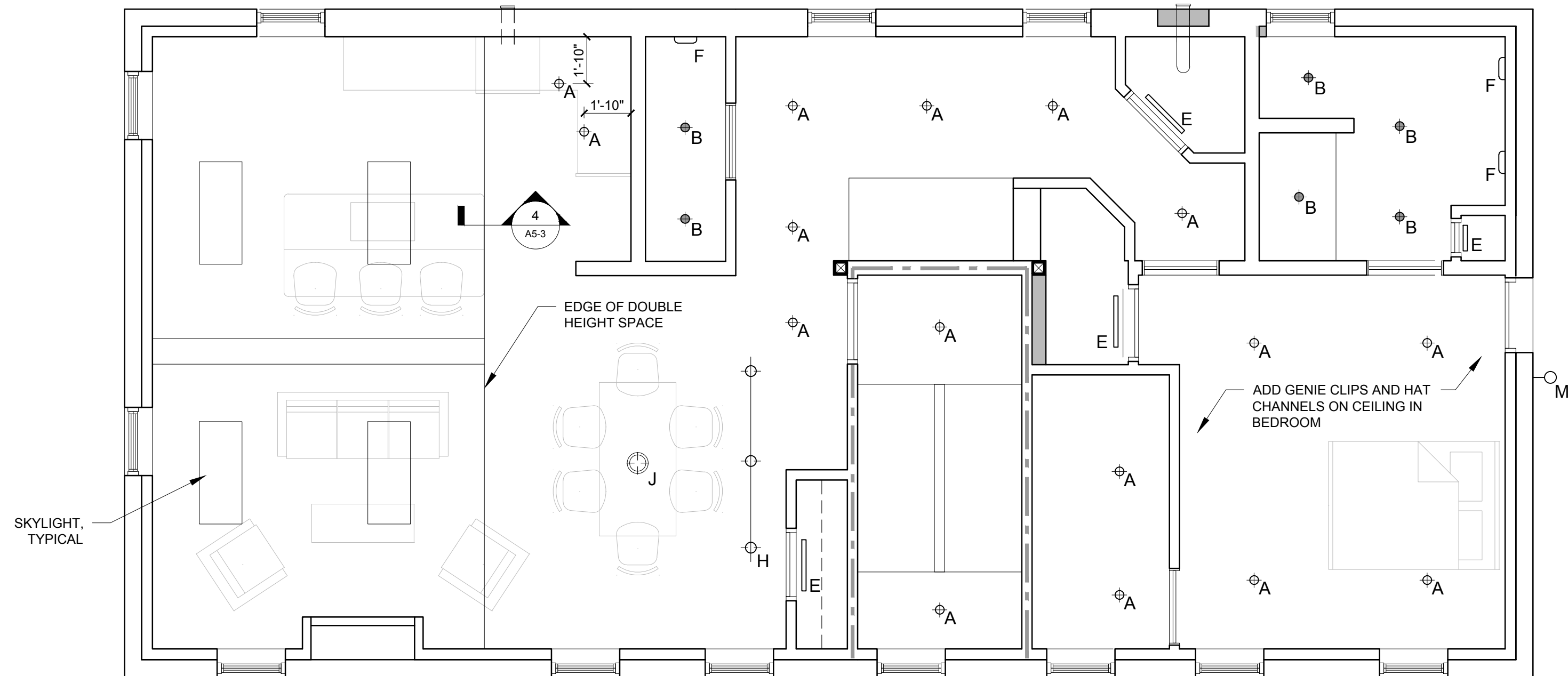
A1-9

REFLECTED CEILING PLAN AND LIGHTING LEGEND		
SYMBOL	TAG	DESCRIPTION
⊕	A	4" RECESSED CAN
⊕	B	4" RECESSED CAN - WET LOCATION
⊕	C	4" SURFACE MOUNT
⊕	D	4" SURFACE MOUNT - WET LOCATION
⊕	E	SURFACE MOUNTED ON WALL ABOVE DOOR
⊕	F	WALL SCONCE
⊕	G	PENDANT LIGHTING
⊕	H	CABLE LIGHTING
⊕	J	SURFACE MOUNT "CUSTOM"
⊕	K	1X4 SURFACE MOUNTED FIXTURE
⊕	L	WALL WASHER
⊕	M	EXTERIOR CUT-OFF WALL MOUNTED DN LIGHT
⊕	N	EXTERIOR RECESSED DOWN LIGHT
⊕	P	SURFACE MOUNT WITH LENS
⊕		CEILING GRILLE

NOTES:  
1.) ALL LIGHTING TO BE LED LAMPS  
2.) ALL LIGHTING TO BE ON DIMMERS



2 FOURTH FLOOR - REFLECTED CEILING PLAN  
1/4" = 1'-0"



1 THIRD FLOOR - REFLECTED CEILING PLAN  
1/4" = 1'-0"