

© 2016 RYAN SENATORE ARCHITECTURE

RESIDENCES
107 INDIA STREET
PORTLAND, MAINE



RYAN SENATORE ARCHITECTURE
565 CONGRESS STREET
PORTLAND, MAINE 04101
207-747-5159
senatorearchitecture.com

CONSULTANTS:
STRUCTURAL:
Structural Integrity
77 Oak Street
Portland, ME 04101
207-774-4614

REVISIONS:

DATE: FEBRUARY 5, 2016

PROJECT No.

DRAWN BY: RRT

CHECKED BY: RJS

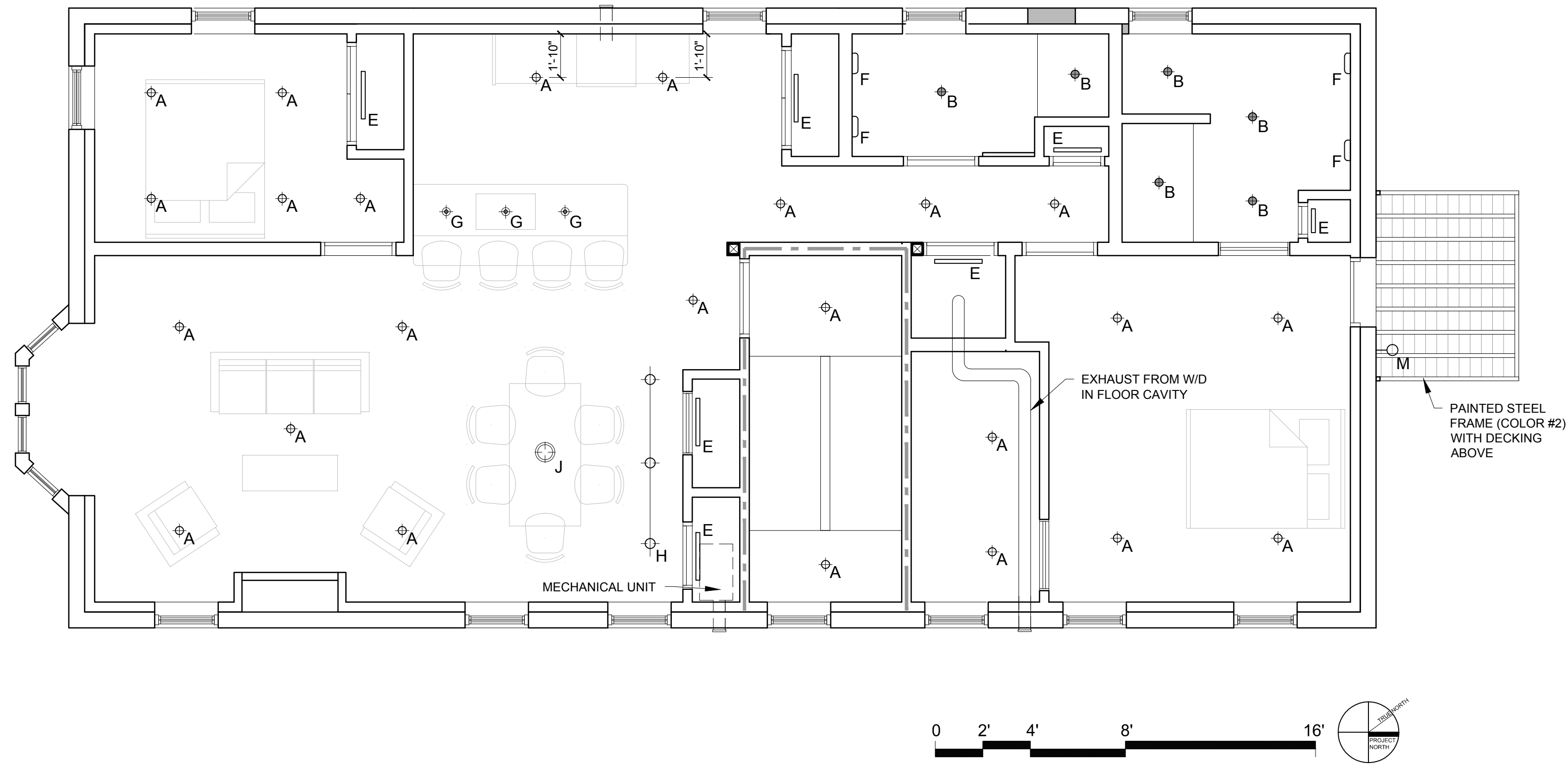
SCALE: AS NOTED

SHEET TITLE:
FIRST AND SECOND FLOOR - REFLECTED CEILING PLAN

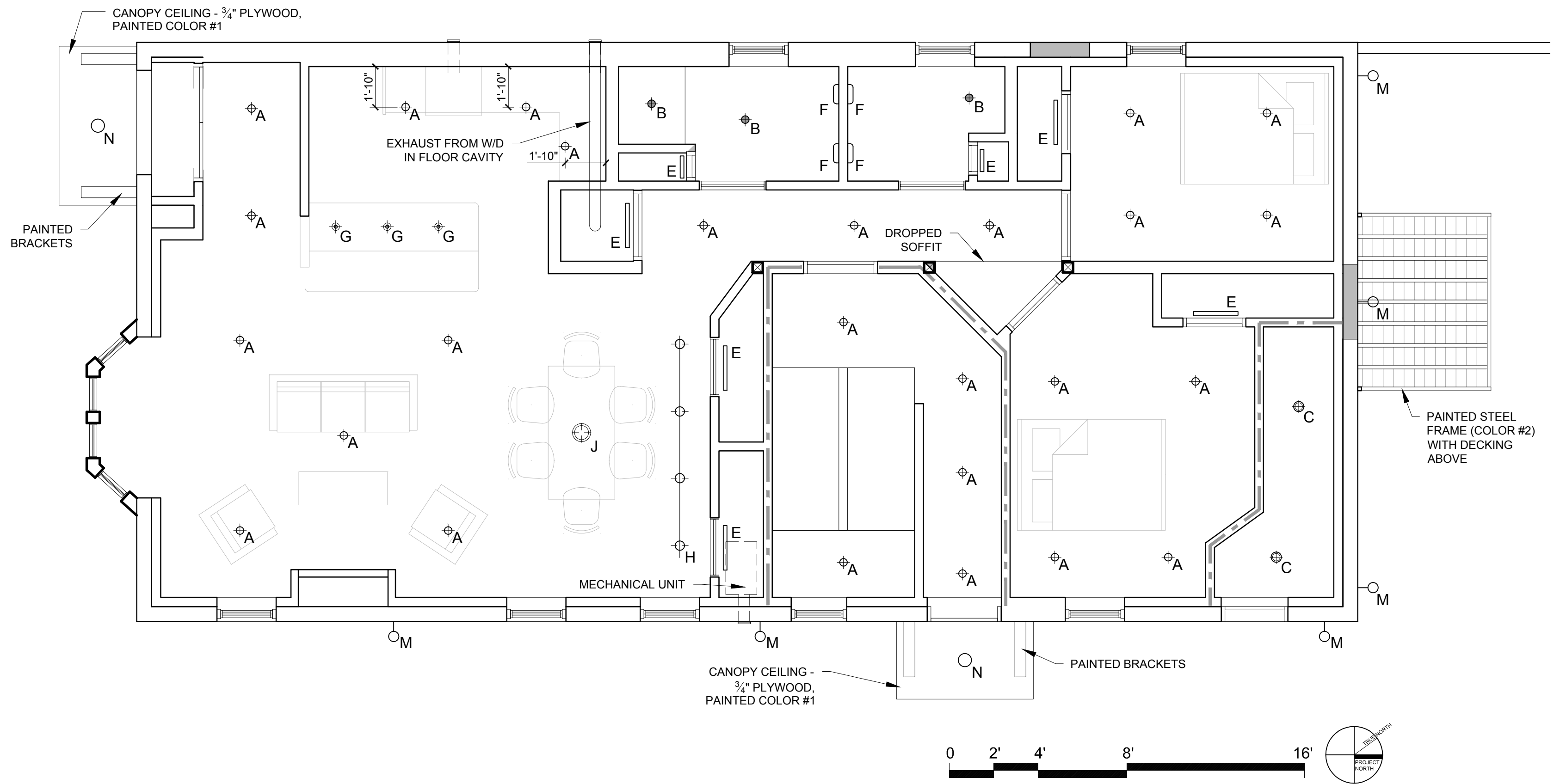
A1-8

| REFLECTED CEILING PLAN AND LIGHTING LEGEND | | |
|--|-----|--|
| SYMBOL | TAG | DESCRIPTION |
| ⊕ | A | 4" RECESSED CAN |
| ⊕ | B | 4" RECESSED CAN - WET LOCATION |
| ⊕ | C | 4" SURFACE MOUNT |
| ⊕ | D | 4" SURFACE MOUNT - WET LOCATION |
| ⊕ | E | SURFACE MOUNTED ON WALL ABOVE DOOR |
| ⊕ | F | WALL SCONCE |
| ⊕ | G | PENDANT LIGHTING |
| ⊕ | H | CABLE LIGHTING |
| ⊕ | J | SURFACE MOUNT "CUSTOM" |
| ⊕ | K | 1X4 SURFACE MOUNTED FIXTURE |
| ⊕ | L | WALL WASHER |
| ⊕ | M | EXTERIOR CUT-OFF WALL MOUNTED DN.LIGHT |
| ⊕ | N | EXTERIOR RECESSED DOWN LIGHT |
| ⊕ | P | SURFACE MOUNT WITH LENS |
| ⊕ | | CEILING GRILLE |

NOTES:
1.) ALL LIGHTING TO BE LED LAMPS
2.) ALL LIGHTING TO BE ON DIMMERS



2 SECOND FLOOR - REFLECTED CEILING PLAN
1/4" = 1'-0"



1 FIRST FLOOR - REFLECTED CEILING PLAN
1/4" = 1'-0"