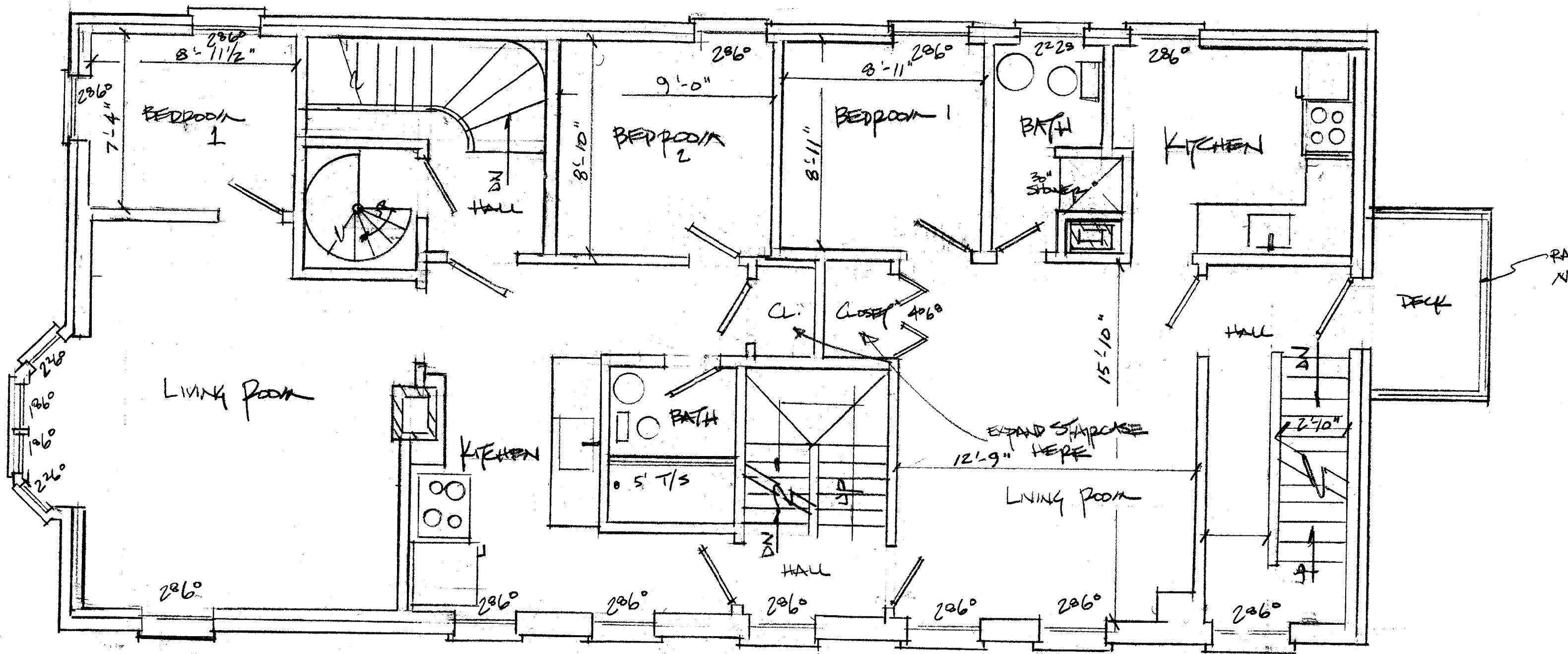


EXISTING 1ST FLOOR PLAN

1/4" = 1'-0"

VIRGINIA'S

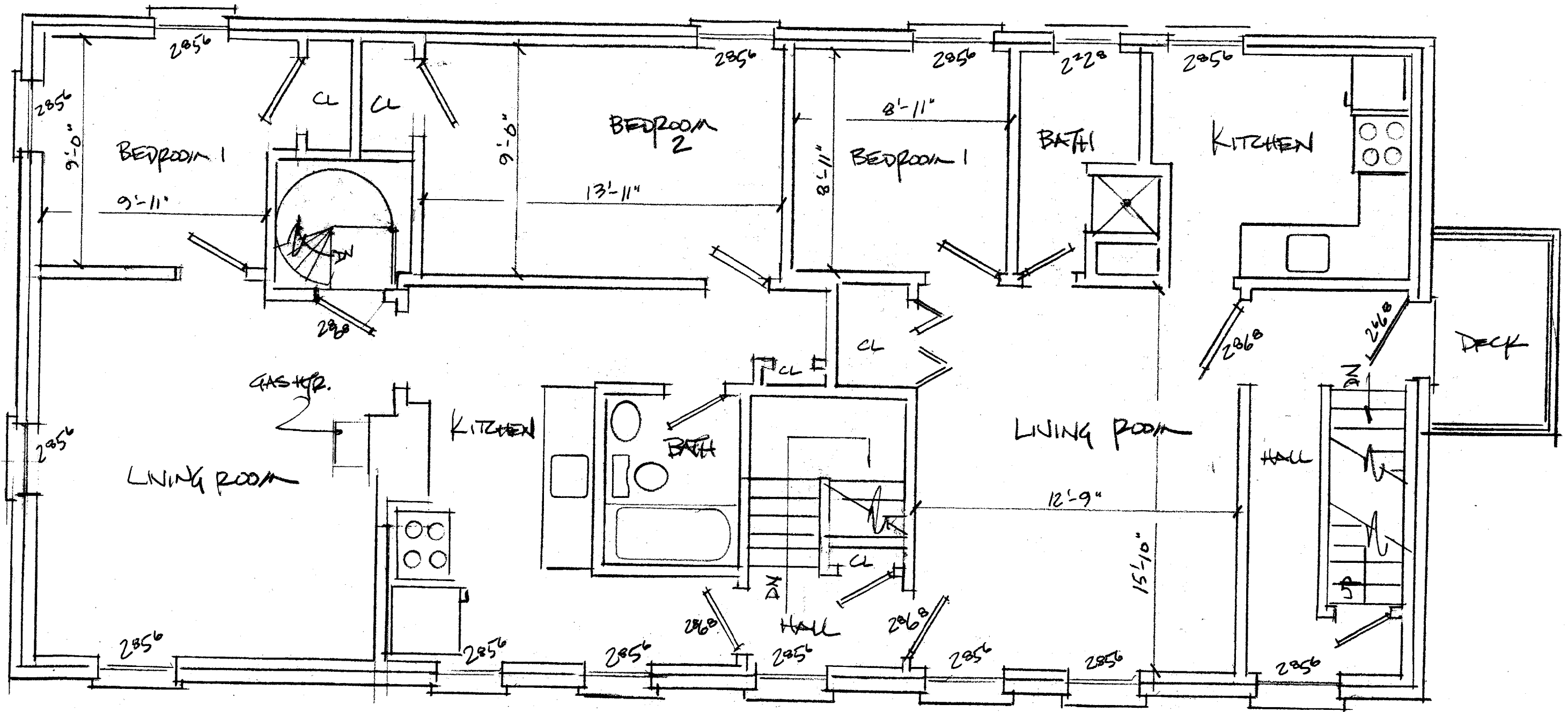


CEILING 8'-11"

EXISTING 2ND FLOOR PLAN

1/4" = 1'-0"

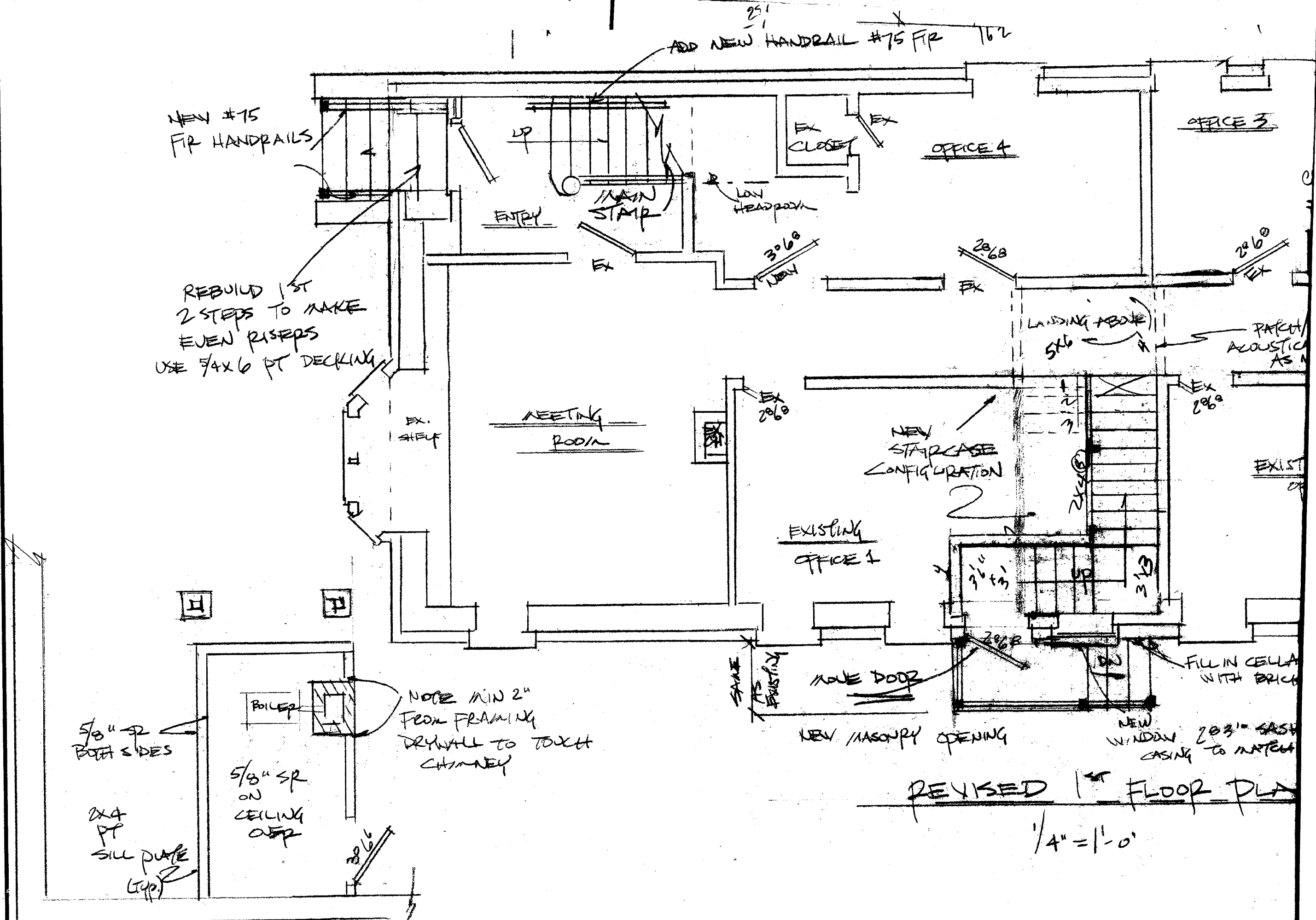
VIRGINIA'S	
SCALE: 1/4" = 1'-0"	APPROVED BY
DATE: 01/31/01	



CEILING 8'-2"

EXISTING 3RD FLOOR PLAN

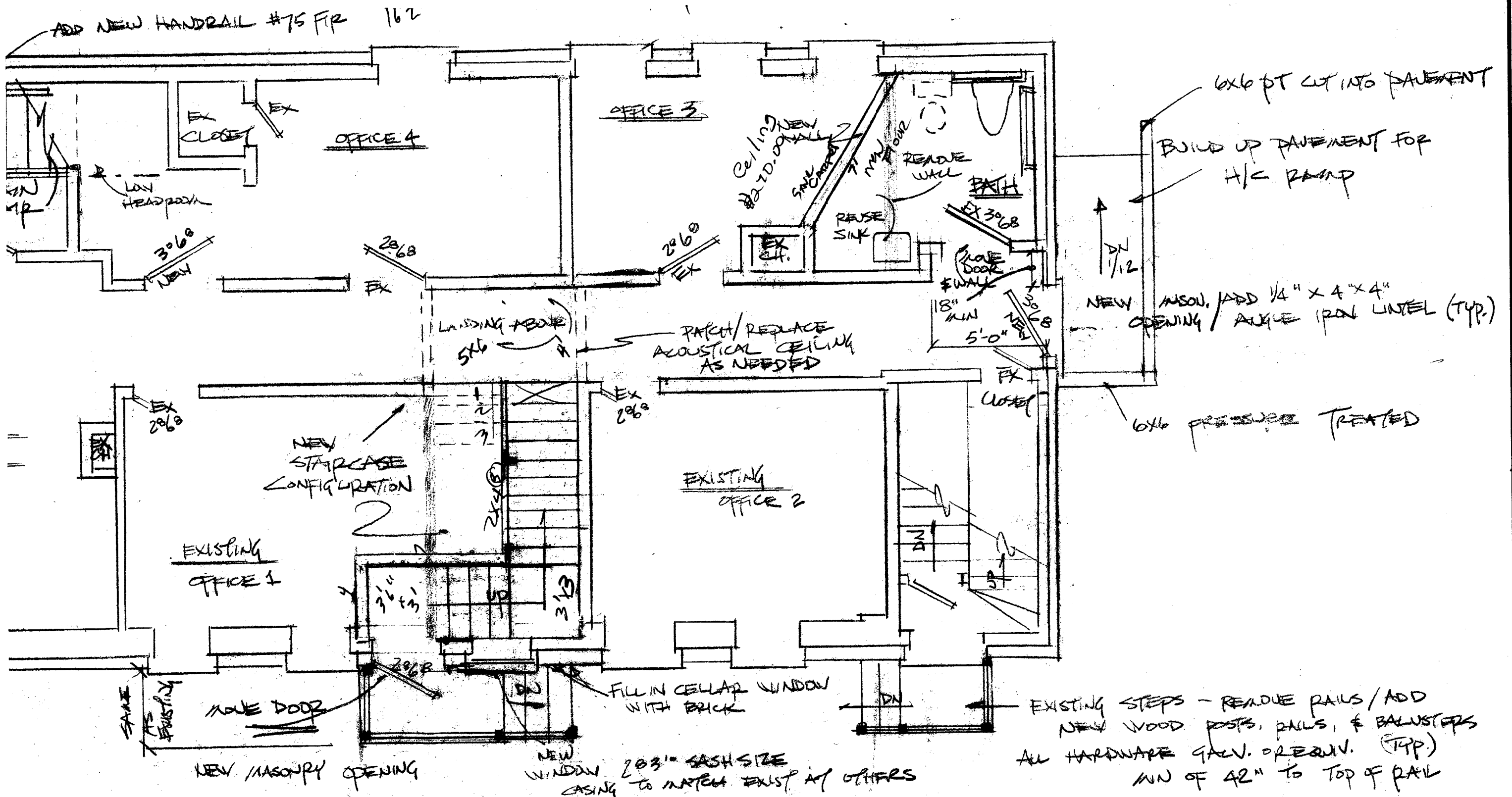
1/4" = 1'-0"



REVISED 1<sup>ST</sup> FLOOR PLAN

1/4" = 1'-0"

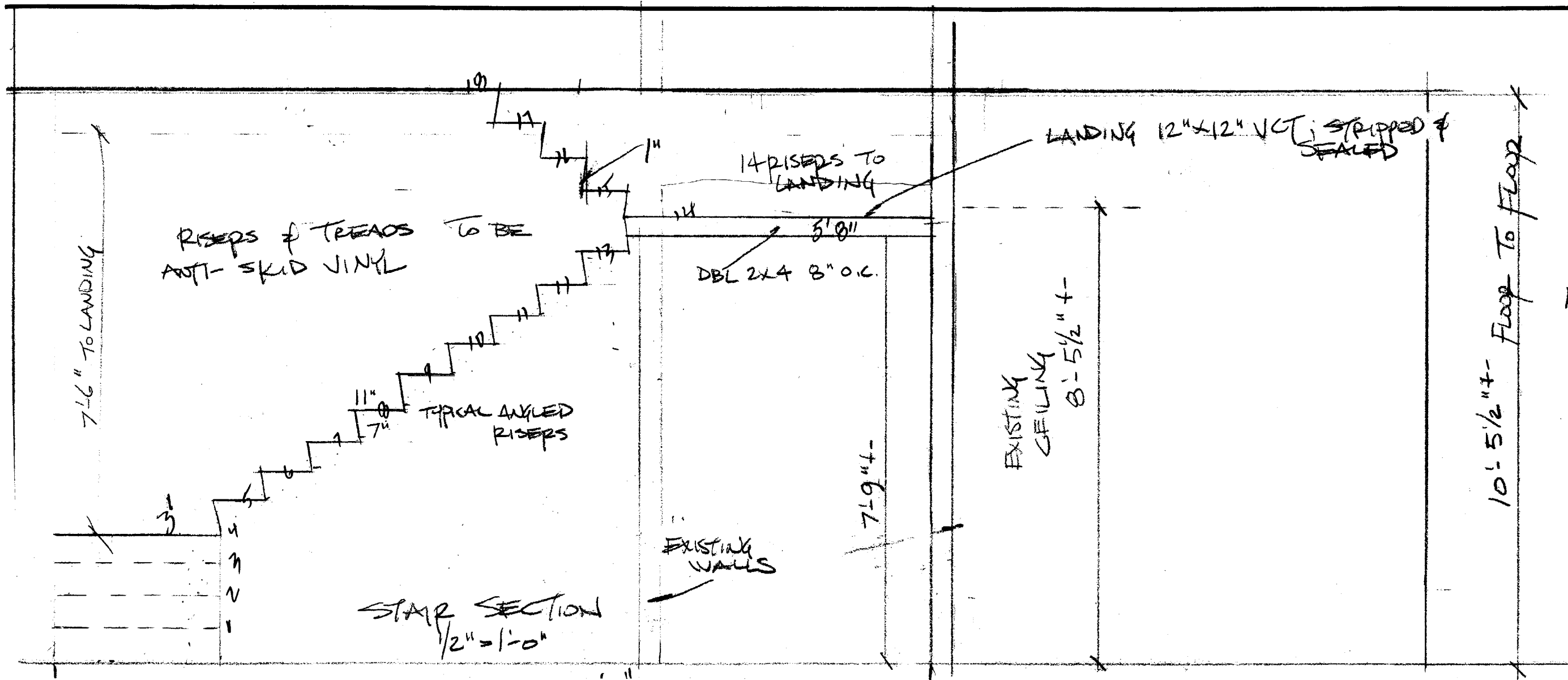
CELLAR PLAN  
1/4" = 1'-0"



REVISED 1<sup>ST</sup> FLOOR PLAN

1/4" = 1'-0"

VIRGINIA'S PLACE		
SCALE: 1/4" = 1'-0"	APPROVED BY	DRAWN BY GLS
DATE: 11/21/01		BUILDINGLAW
REVISED 1 <sup>ST</sup> FLOOR PLAN		
105-107 INDIA STREET		DRAWING NUMBER 4 OF 6



RISEPS & TREADS TO BE  
ANTI-SKID VINYL

TYPICAL AXLED  
RISEPS

14 RISEPS TO  
LANDING  
5'8"  
DBL 2x4 8" O.C.

LANDING 12"x12" VCT, STRIPPED &  
SEALED

EXISTING  
GEILING  
8'-5 1/2" +/-

10'-5 1/2" +/- Floor To Floor

18 RISEPS @ 7"  
17 TREADS @

STAIR SECTION  
1/2" = 1'-0"

EXISTING  
WALLS

7'-9" +/-

7'-6" TO LANDING

13  
156

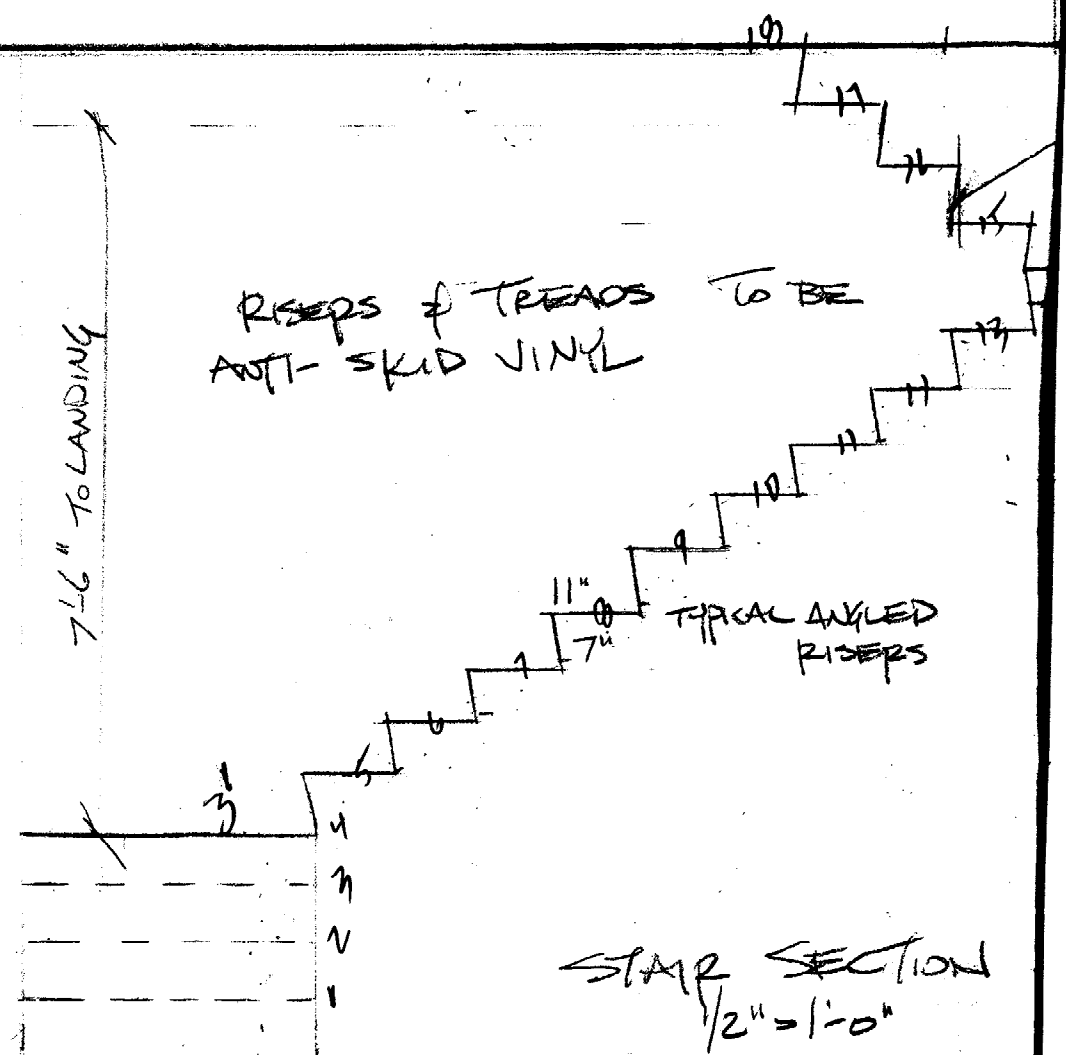
608

73

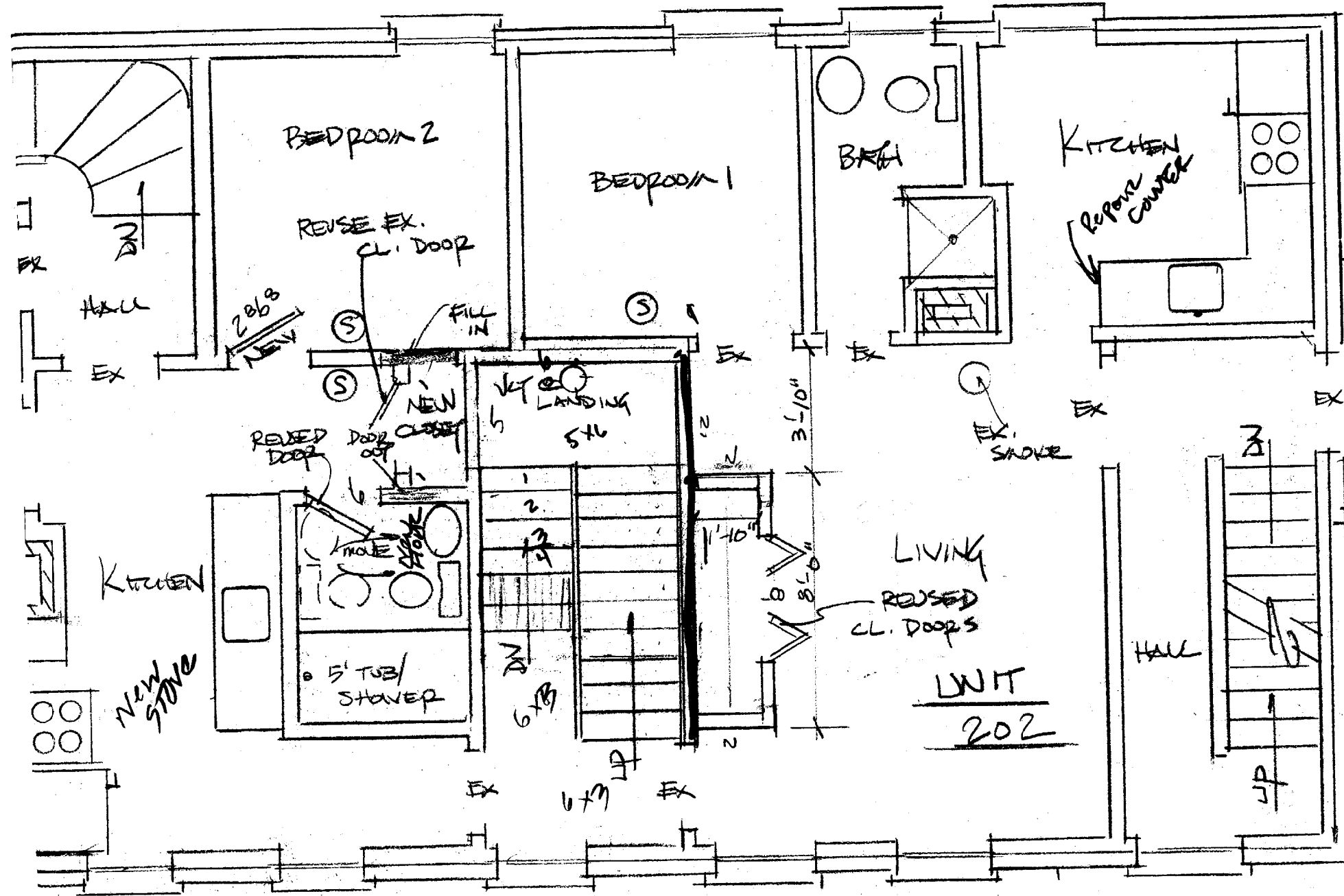
GENERAL NOTES:

STRIP & RE-ROOF ENTIRE ROOF / INSTALL 2-  
 36" ROWS OF ICE/WATER SHIELD (6' WIDE)  
 @ EAVES  
 ADD NEW LEVER LOCKSET AT BATHROOM  
 ADD HANDRAIL TO CELLAR STAIR  
 ENCLOSE BOILER WITH FIREWALL  
 SEE PLAN BELOW  
 ADD HANDRAIL @ MAIN STAIR -  
 #75 FIR

NEW STAIRS - CONTINUOUS #75 FIR  
 HANDRAIL ON INSIDE WALL PLUS  
 RAILS AT STAIRS (NOT AT LANDING)  
 RAILS TO RECEIVE 1 COAT STAIN;  
 3 COATS POLY  
 PATCH CEILING AS NECESSARY



NOTE CLOSET DOES NOT GO TO FLOOR SHELF STARTS 24" UP



NEW 4x4 PT POSTS,  
BALUSTERS & RAILS @ 42"  
8" @ 4" O.C

MOVE WALL 4"  
TOWARDS BACK OF  
BUILDING

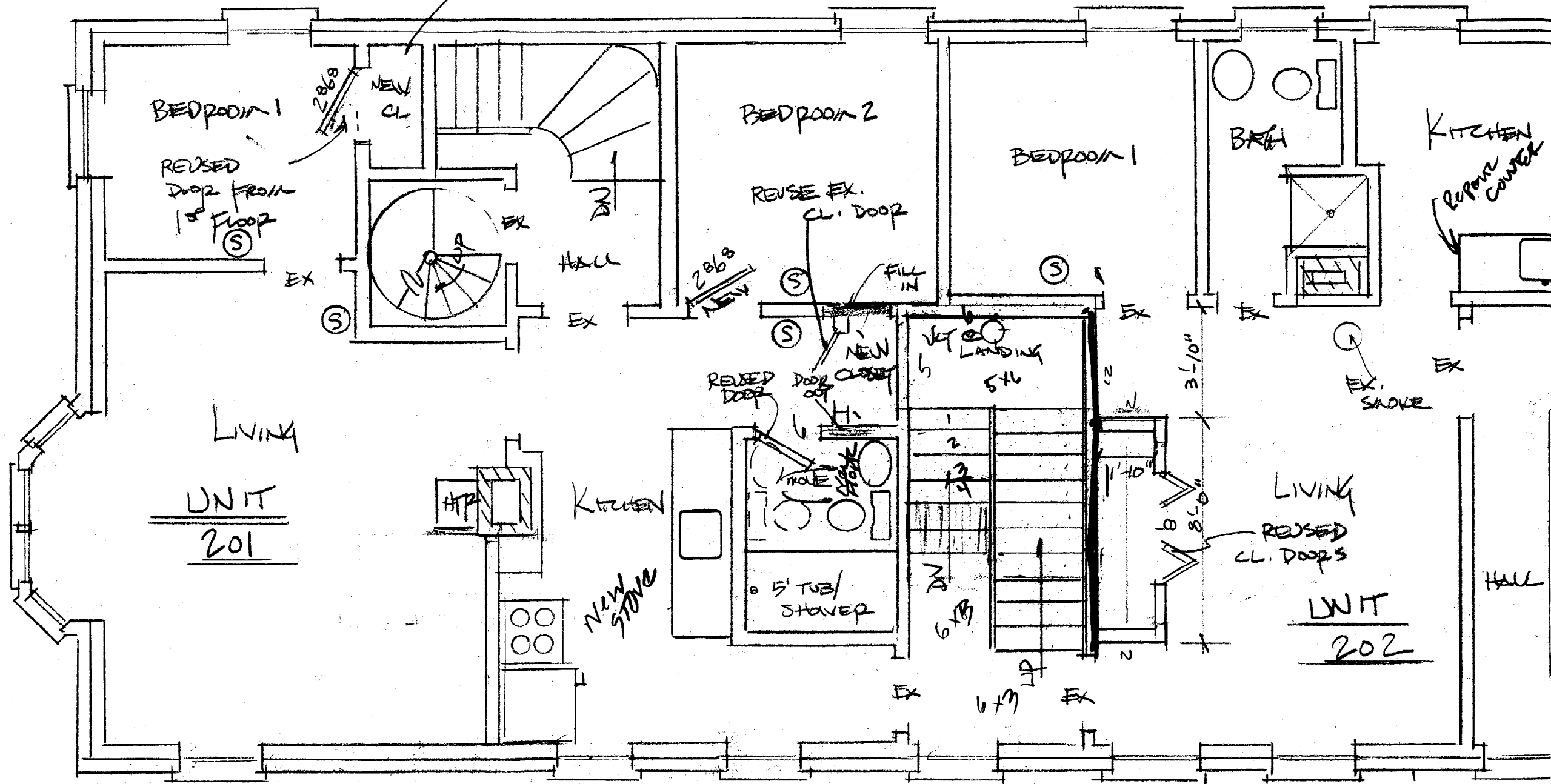
2ND TO 3RD 10'-2 1/2"  
HT.

REVISED 2ND FLOOR PLAN

1/2" = 1'-0"



NOTE CLOSET DOES NOT GO TO FLOOR SHELF STARTS 24" UP



2ND TO 3RD 10'-2 1/2" HT.

### REVISED 2ND FLOOR PLAN

1/2" = 1'-0"

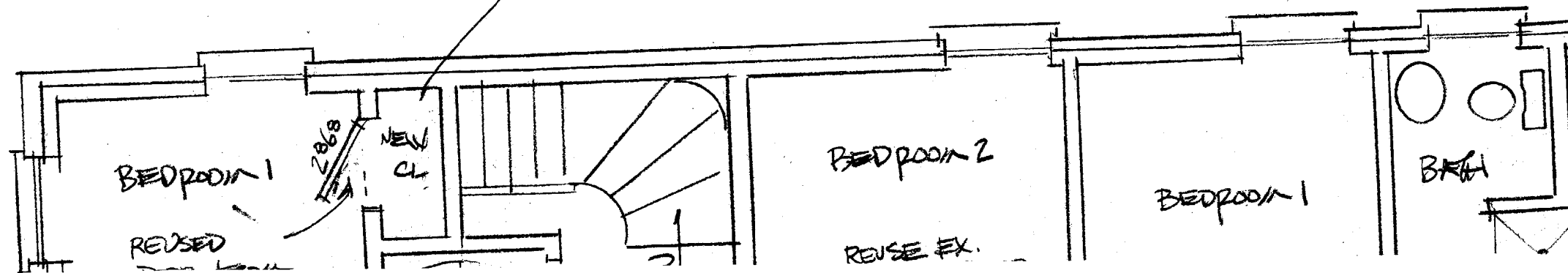
GENERAL NOTES

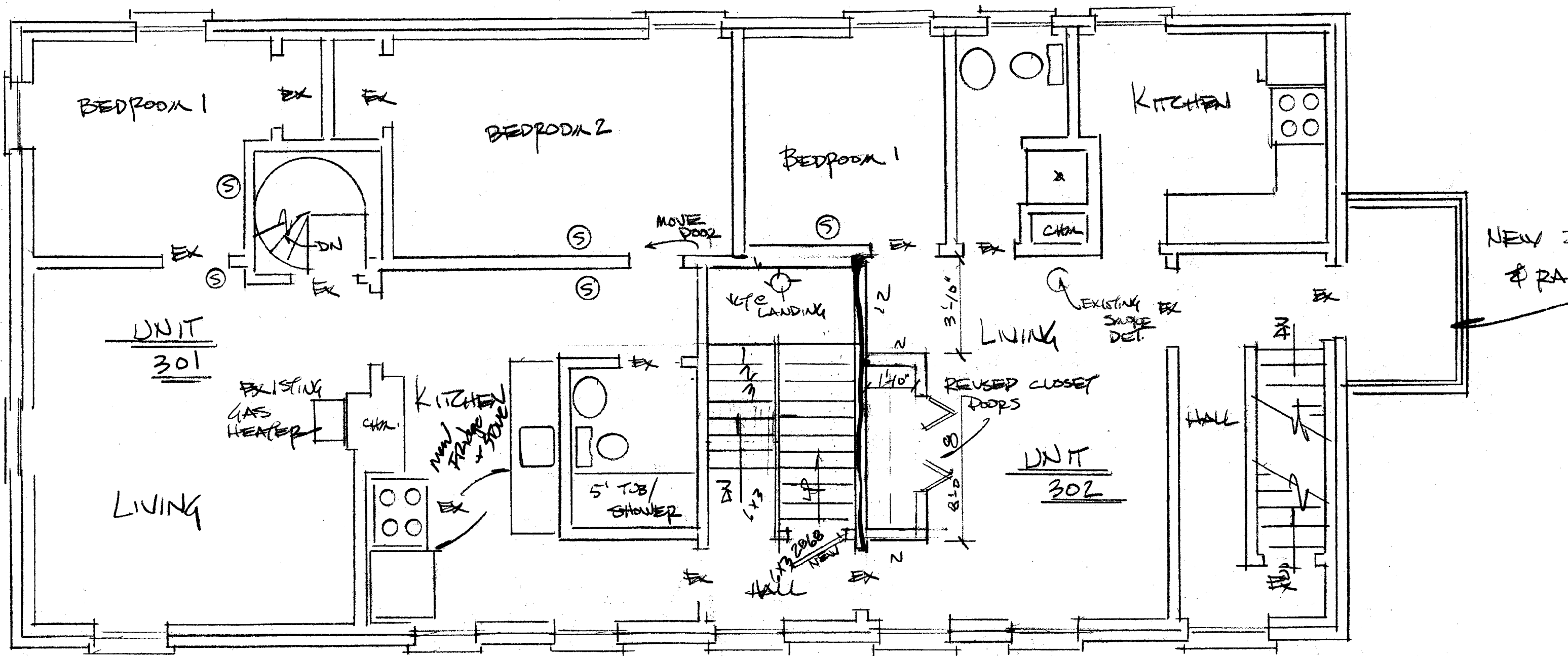
PATCH FLOOR AT BALL IN 201 & INSTALL  
NEW 12" X 12" VGT

⑤ - ADD SMOKE DETECTORS THAT ARE ALL  
INTER CONNECTED

TRIM AT NEW CLOSETS TO MATCH EXISTING AS CLOSE  
AS POSSIBLE (TYP.)

NOTE CLOSET DOES NOT GO TO  
FLOOR SHELF STARTS 24" UP





REVISED 3RD FLOOR PLAN

1/4" = 1'-0"

VIRGINIA'S  $\Phi$