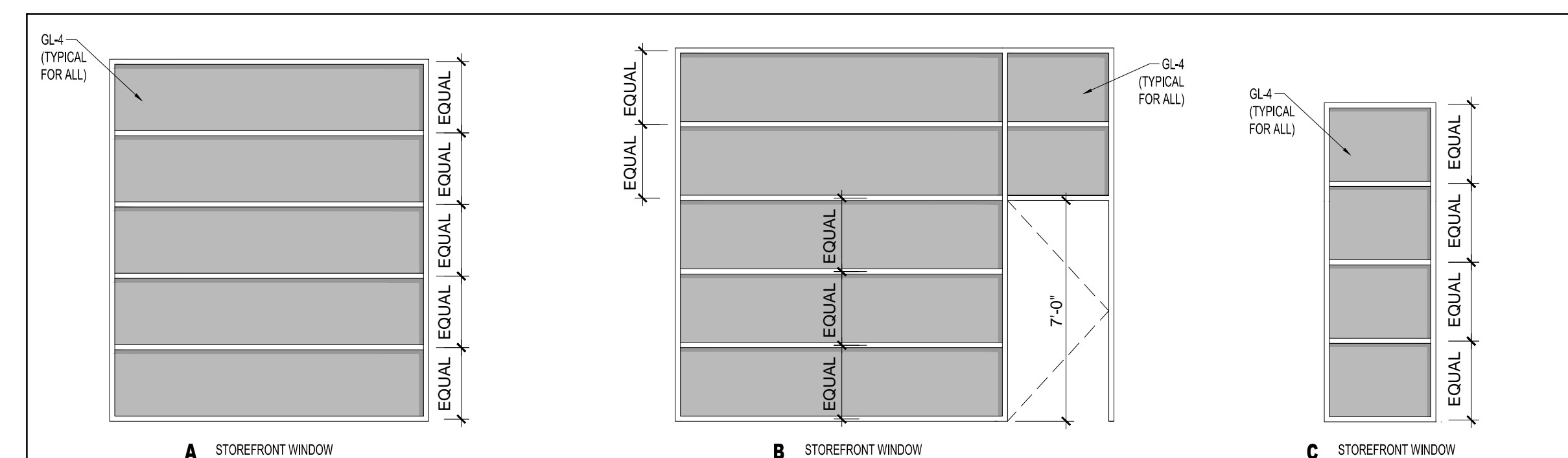


GLAZING SCHEDULE	
KEY	GLAZING TYPE
GL-1	INSULATED CLEAR GLAZING
GL-2	FIRE RATED INSULATED GLAZING
GL-3	CLEAR TEMPERED GLASS
GL-4	CLEAR INSULATED TEMPERED GLASS
GL-5	FIRE RATED GLAZING

1 DOOR TYPES
1/4" = 1'-0"

DOOR SCHEDULE																	
DOOR NO.	DOOR TYPE	DOOR SIZE			DOOR FRAME				GENERAL								
		WIDTH	HEIGHT	THICKNESS	MATERIAL	FINISH	INSULATED	FRAME DETAILS			CLOSER	FIRE RATING (MINUTES)	HARDWARE KEY	SCHEDULE KEY			
								MATERIAL	THRESHOLD	HEAD					JAMB	SILL	
100.1	A	3'-0"	7'-0"	1-3/4"	AL	ANO	-	AL	AL	-	-	-	Y	-	-	NEW STOREFRONT DOOR WITH PANIC HARDWARE	
100.2	-	-	-	-	-	-	-	-	-	-	-	-	Y	-	-	EXISTING STOREFRONT DOOR - ADD PANIC HARDWARE	
110.1	B	2'-6"	7'-0"	1-3/4"	WD	PTD	-	WD	-	-	-	N	-	-	-	DOUBLE DOORS	
110.2	C	6'-0"	7'-0"	1-3/4"	WD	PTD	-	WD	-	-	-	N	-	-	-	DOUBLE DOORS	
110.3	B	3'-0"	7'-0"	1-3/4"	WD	PTD	-	WD	-	-	-	N	-	-	-		
110.4	B	3'-0"	7'-0"	1-3/4"	WD	PTD	-	WD	-	-	-	N	-	-	-		
110.5	C	6'-0"	7'-0"	1-3/4"	WD	PTD	-	WD	-	-	-	N	-	-	-	DOUBLE DOORS	
110.6	C	3'-0"	7'-0"	1-3/4"	WD	PTD	-	WD	-	-	-	Y	-	-	-		
110.7	C	3'-0"	7'-0"	1-3/4"	WD	PTD	-	WD	-	-	-	Y	-	-	-		
110.8	C	3'-0"	7'-0"	1-3/4"	WD	PTD	-	WD	-	-	-	Y	-	-	-		
120.1	D	3'-0"	7'-0"	-	-	-	-	-	-	-	-	-	-	-	-	GLASS SLIDING DOOR FOR GLASS OFFICE WALLS. TYPICAL FOR ALL GLASS OFFICES	
120.2	D	3'-0"	7'-0"	-	-	-	-	-	-	-	-	-	-	-	-	GLASS SLIDING DOOR FOR GLASS OFFICE WALLS. TYPICAL FOR ALL GLASS OFFICES	
120.3	D	3'-0"	7'-0"	-	-	-	-	-	-	-	-	-	-	-	-	GLASS SLIDING DOOR FOR GLASS OFFICE WALLS. TYPICAL FOR ALL GLASS OFFICES	
120.4	D	3'-0"	7'-0"	-	-	-	-	-	-	-	-	-	-	-	-	GLASS SLIDING DOOR FOR GLASS OFFICE WALLS. TYPICAL FOR ALL GLASS OFFICES	
120.5	D	3'-0"	7'-0"	-	-	-	-	-	-	-	-	-	-	-	-	GLASS SLIDING DOOR FOR GLASS OFFICE WALLS. TYPICAL FOR ALL GLASS OFFICES	
120.6	D	3'-0"	7'-0"	-	-	-	-	-	-	-	-	-	-	-	-	GLASS SLIDING DOOR FOR GLASS OFFICE WALLS. TYPICAL FOR ALL GLASS OFFICES	
120.7	D	3'-0"	7'-0"	-	-	-	-	-	-	-	-	-	-	-	-	GLASS SLIDING DOOR FOR GLASS OFFICE WALLS. TYPICAL FOR ALL GLASS OFFICES	
120.8	D	3'-0"	7'-0"	-	-	-	-	-	-	-	-	-	-	-	-	GLASS SLIDING DOOR FOR GLASS OFFICE WALLS. TYPICAL FOR ALL GLASS OFFICES	
120.9	D	3'-0"	7'-0"	-	-	-	-	-	-	-	-	-	-	-	-	GLASS SLIDING DOOR FOR GLASS OFFICE WALLS. TYPICAL FOR ALL GLASS OFFICES	
120.10	D	3'-0"	7'-0"	-	-	-	-	-	-	-	-	-	-	-	-	GLASS SLIDING DOOR FOR GLASS OFFICE WALLS. TYPICAL FOR ALL GLASS OFFICES	

- DOOR NOTES:
- 1.) ALL EXTERIOR GLAZING TO BE LOW-E ARGON FILLED INSULATED GLAZING UNITS
 - 2.) FRAME ALL OPENINGS WITH ELEVATIONS
 - 3.) SEAL EXTERIOR DOORS TO ROUGH OPENING WITH LOW EXPANDING FOAM INSULATION - SEE DETAILS
 - 4.) ALL DOOR HARDWARE TO BE 'LEVER' TYPE
 - 5.) ALL EXTERIOR DOORS TO BE WEATHERSTRIPPED



1 WINDOW TYPES
1/4" = 1'-0"

WINDOW SCHEDULE									
KEY	ACTION	ROUGH * OPENING (WxH) VIF	HEIGHT FROM SUB FLOOR	DETAILS			MATERIAL	FINISH	REMARKS
				HEAD	JAMB	SILL			
A	F	V.I.F.	-	-	-	-	AL	-	STOREFRONT WINDOW TO MATCH EXISTING
B	F	V.I.F.	-	-	-	-	AL	-	STOREFRONT WINDOW TO MATCH EXISTING
C	F	V.I.F.	-	-	-	-	AL	-	STOREFRONT WINDOW TO MATCH EXISTING

V.I.F. = VERIFY IN FIELD