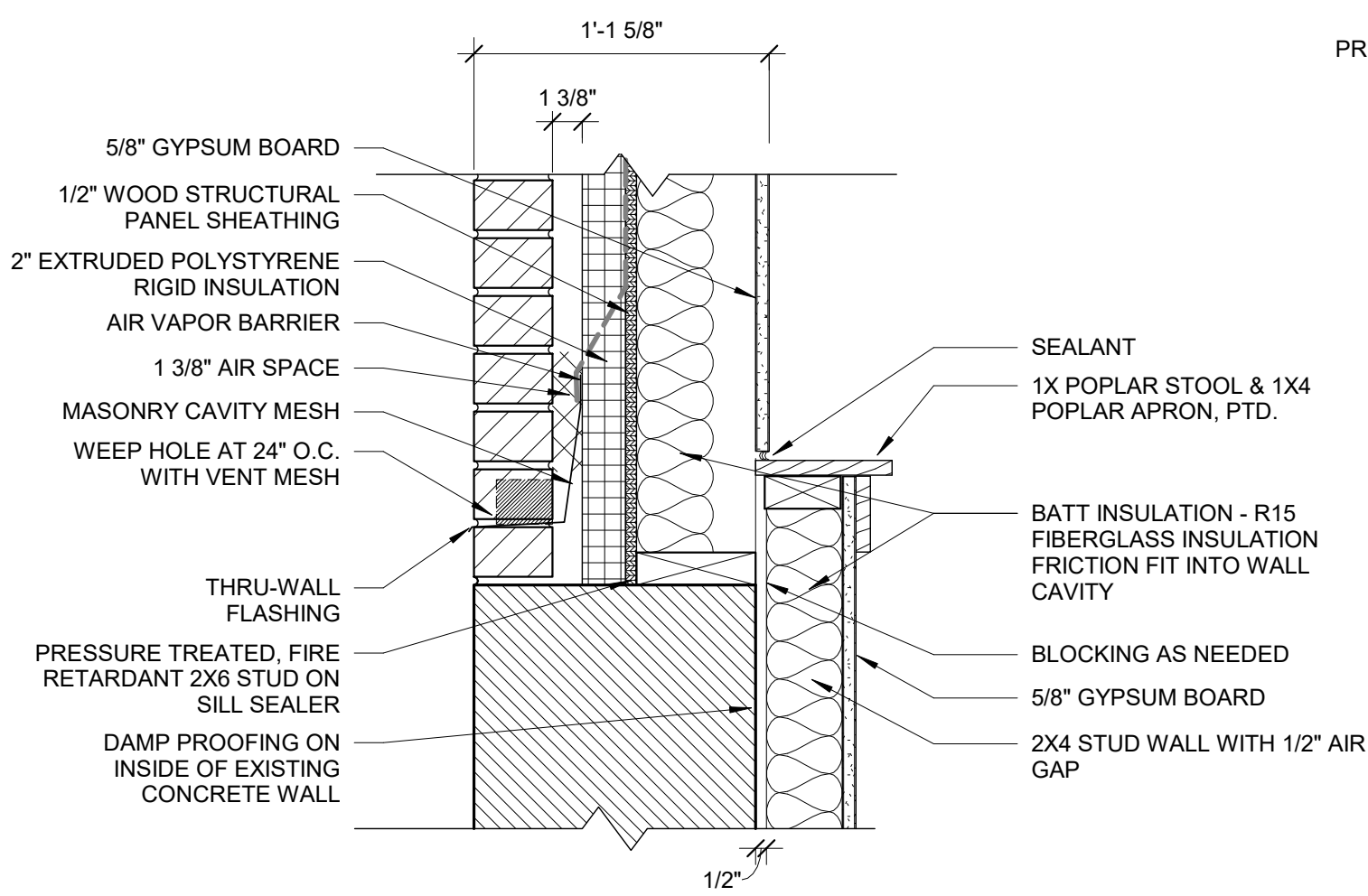
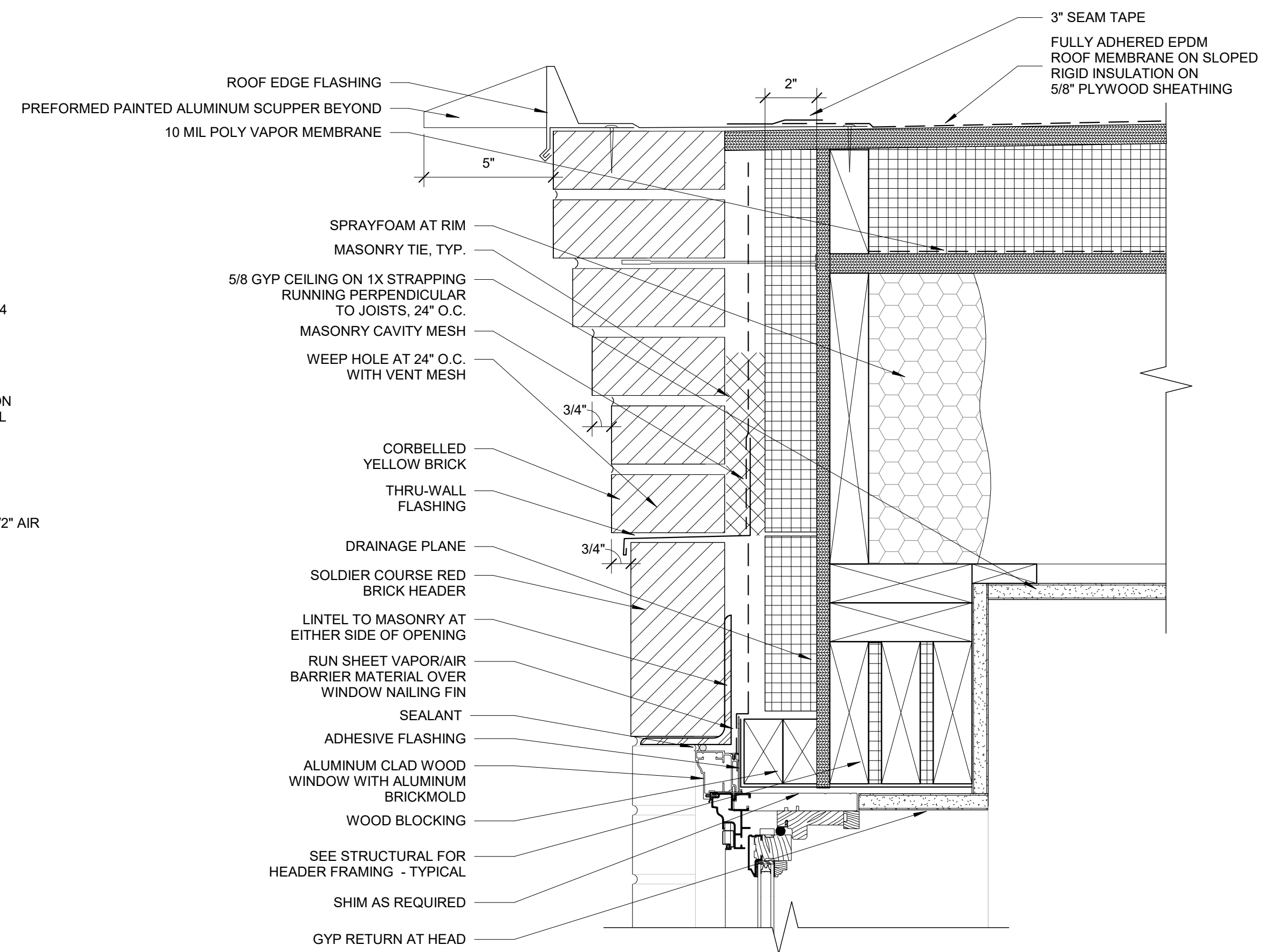


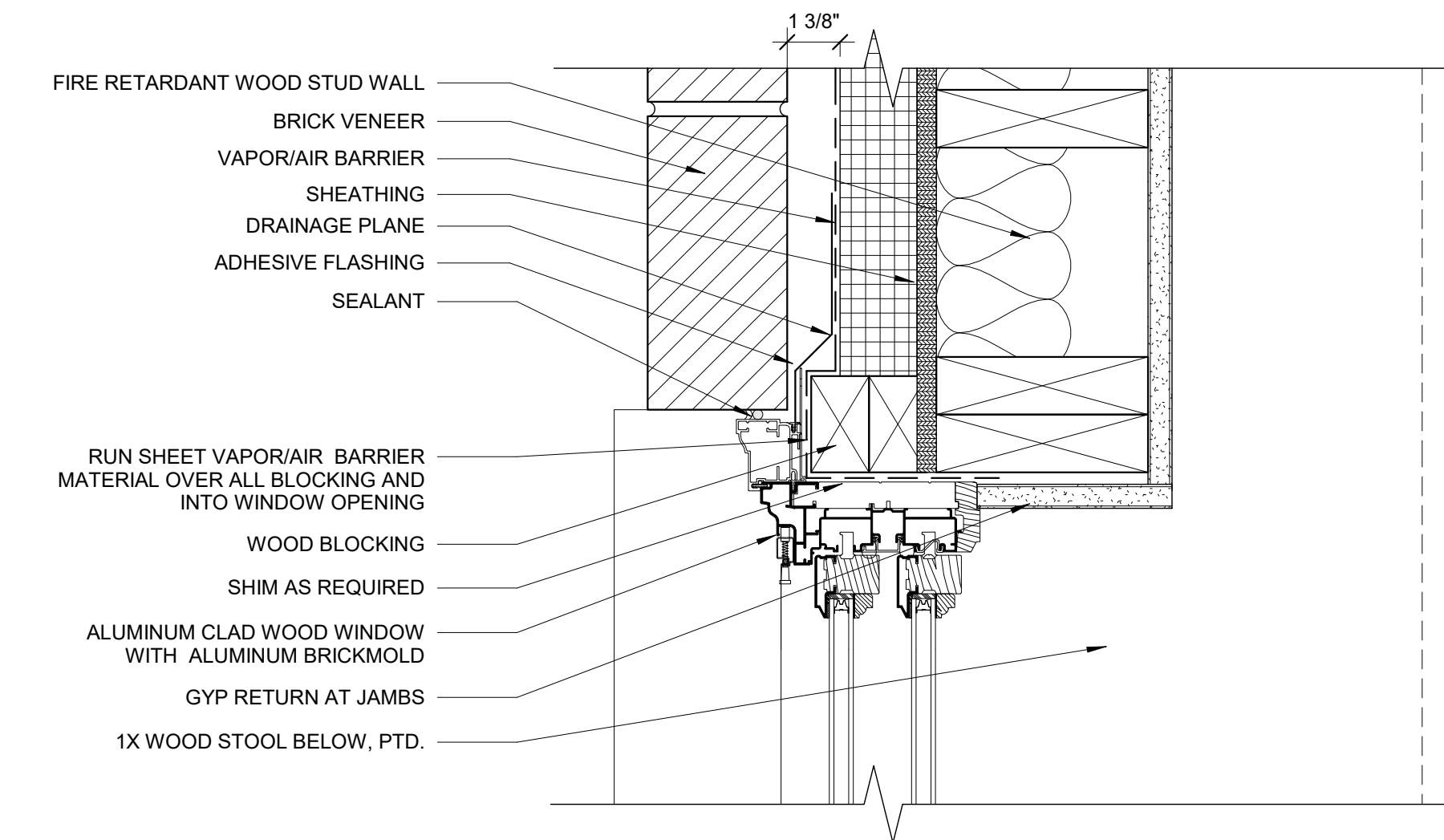
**6 | BRICK TO CONCRETE DETAIL**  
1 1/2" = 1'-0"



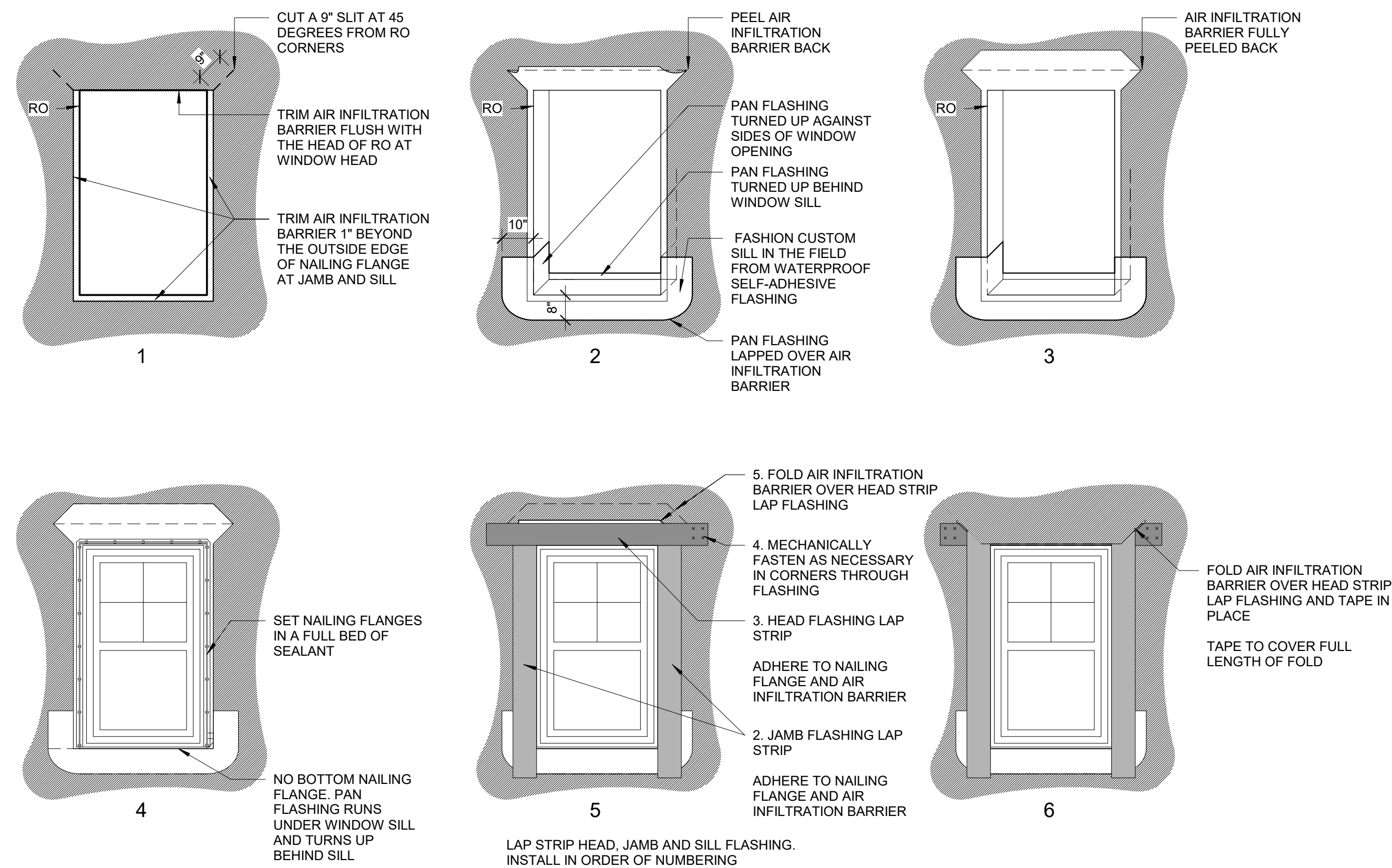
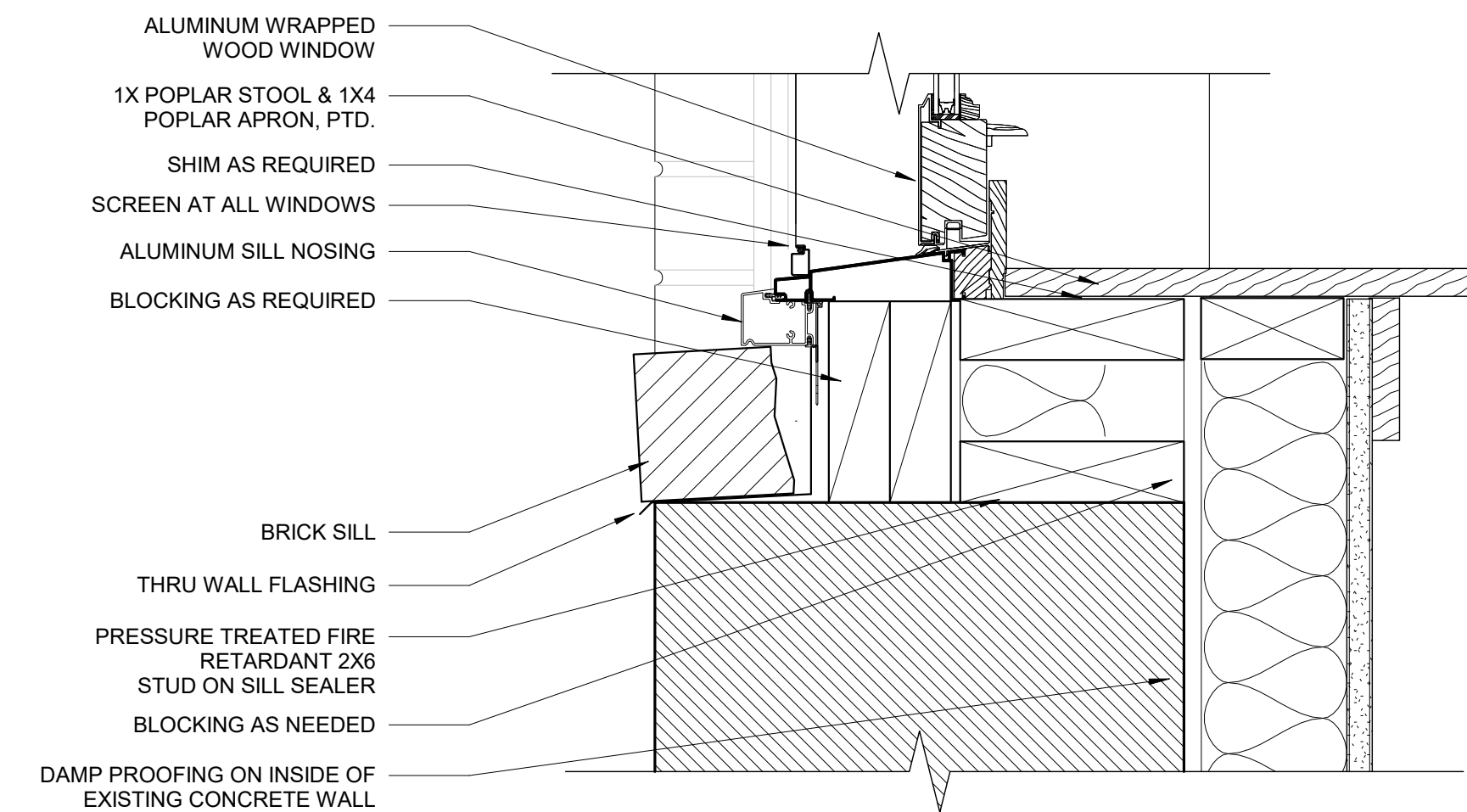
**3 | WINDOW HEAD AND CORNICE DETAIL**  
3" = 1'-0"



**2 | WINDOW JAMB DETAIL**  
3" = 1'-0"



**1 | WINDOW SILL DETAIL**  
3" = 1'-0"

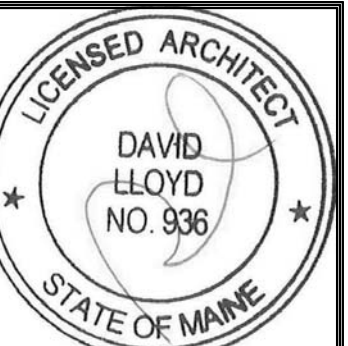


**ORDER OF INSTALLATION OF WATER PROOFING AT WINDOWS.**  
 WATER PROOFING AT STOREFRONT AND DOORS USE STEPS 1-3

- NOTES:  
 1. INSTALL AIR INFILTRATION BARRIER IN ORDER AS SHOWN BY NUMBERS  
 2. IF APPLICABLE, LEAVE RELEASE PAPER ON LOWER HALF OF SILL FLASHING UNTIL FUTURE TIE-IN.  
 3. INSTALL FLASHING AND AIR INFILTRATION BARRIER TO FORM WATER SHEDDING LAPS  
 4. COORDINATE WITH FLASHING REQUIREMENTS OF WINDOW MANUFACTURER  
 5. FOLLOW MANUFACTURERS RECOMMENDATIONS FOR INSTALLATION.

NOTE: MOCK-UP FIRST WINDOW TO BE APPROVED BY MSHA, AND ARCHITECT PRIOR TO ANY INSTALLATION

**7 | ORDER OF INSTALLATION OF WATERPROOFING AT WINDOWS**  
3/8" = 1'-0"



Prepared For:  
**Keyeight Housing Associates LP**

Consultant:

Architect:  
**ARCHETYPE architects**  
 48 Union Wharf Portland, Maine 04101  
 (207) 772-6022 ARCHETYPE@ARCHETYPEPA.COM

Project:  
**NORTH SCHOOL APARTMENTS COMMUNITY SPACE**  
 248 Congress St. Portland ME 04101

Revisions:

Scale: As indicated

Date: 10/17/2016

**DETAILS**

**A5.00**