

Prepared For:  
**Keyright Housing Associates LP**

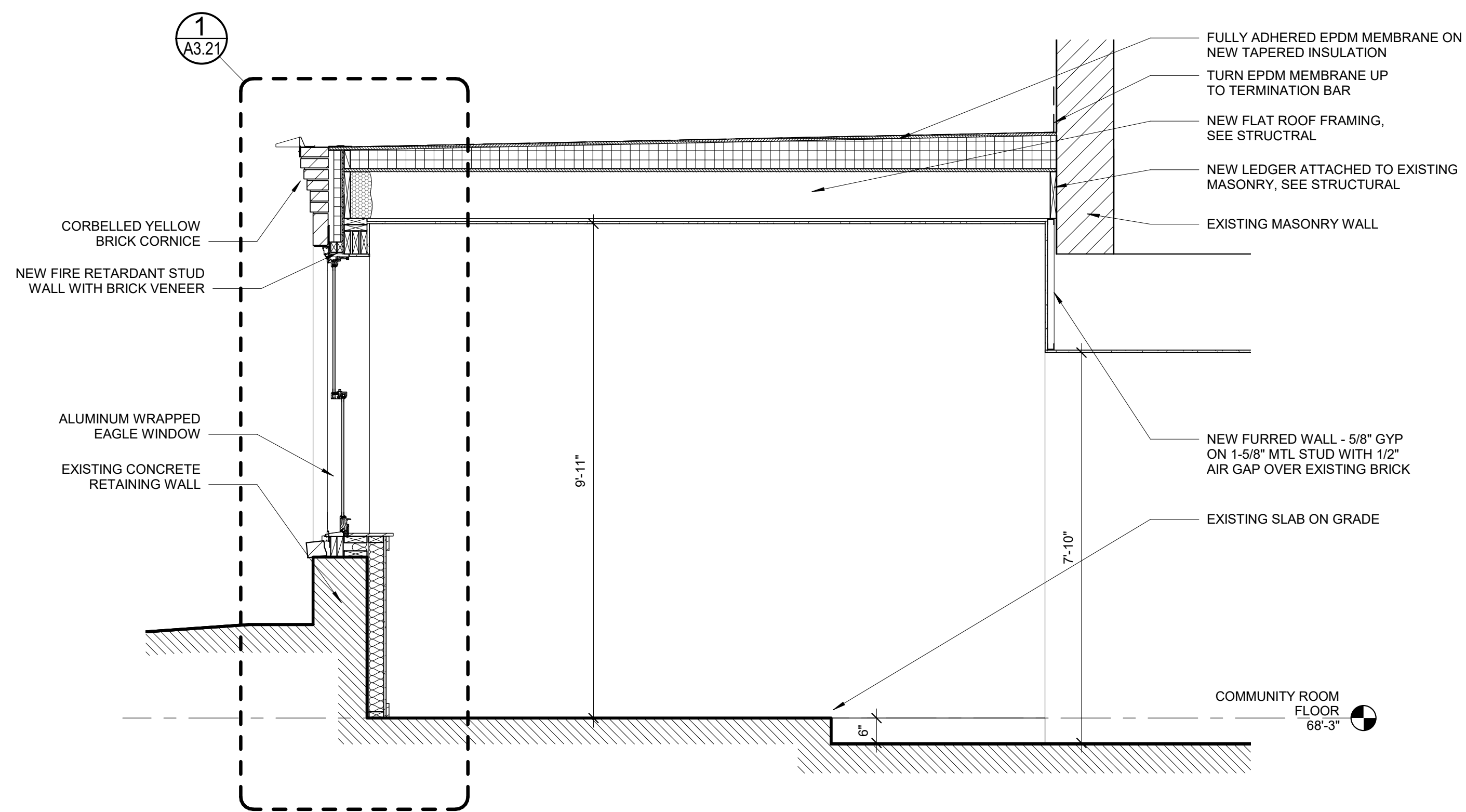
Consultant:  
**ARCHETYPE architects**  
 48 Union Wharf Portland, Maine 04101  
 (207) 772-6022 ARCHETYPE@ARCHETYPEPA.COM

Project:  
**NORTH SCHOOL APARTMENTS COMMUNITY SPACE**  
 248 Congress St. Portland ME 04101

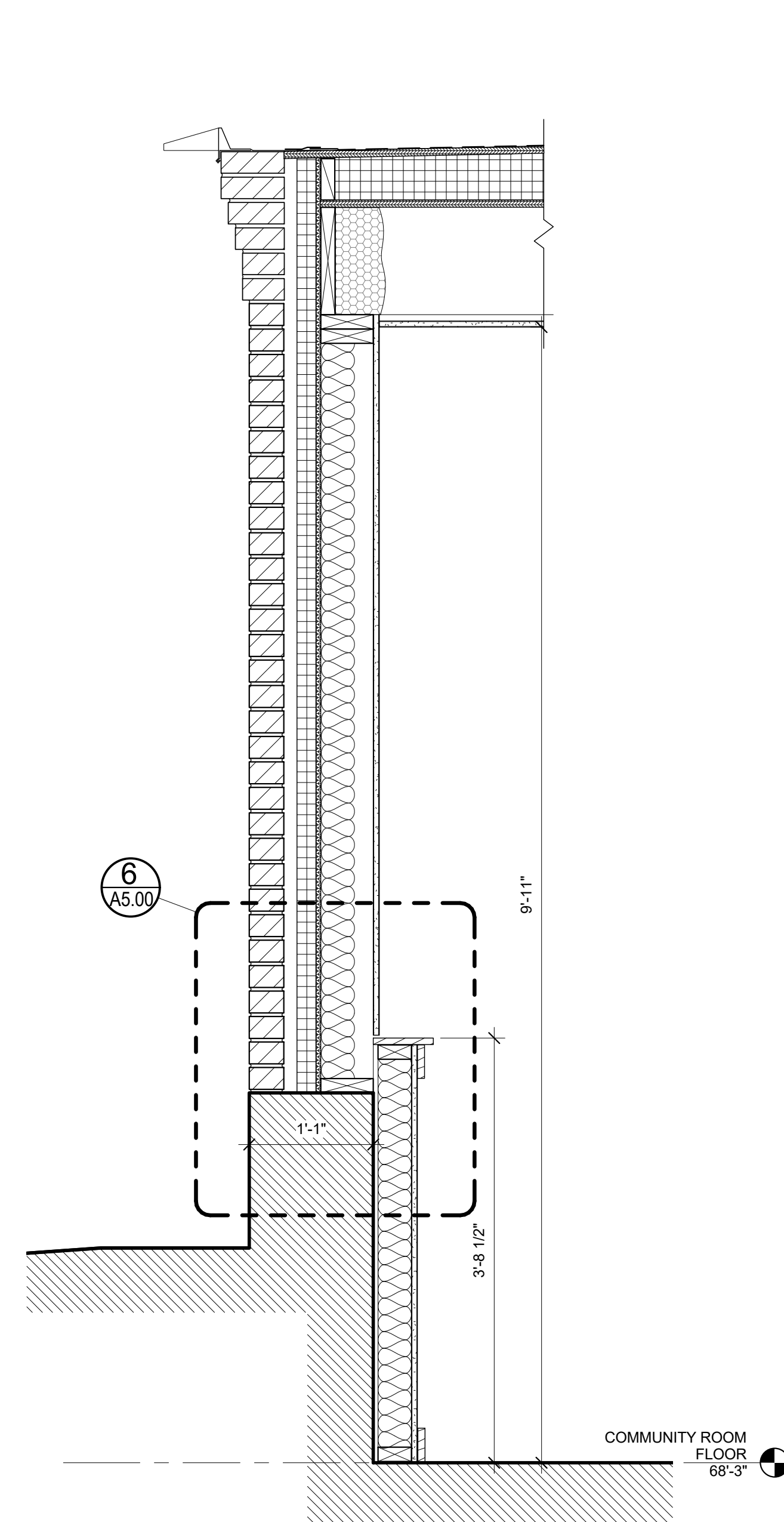
Revisions:

Date: 10/17/2016  
 Scale: As indicated  
**WALL SECTIONS**

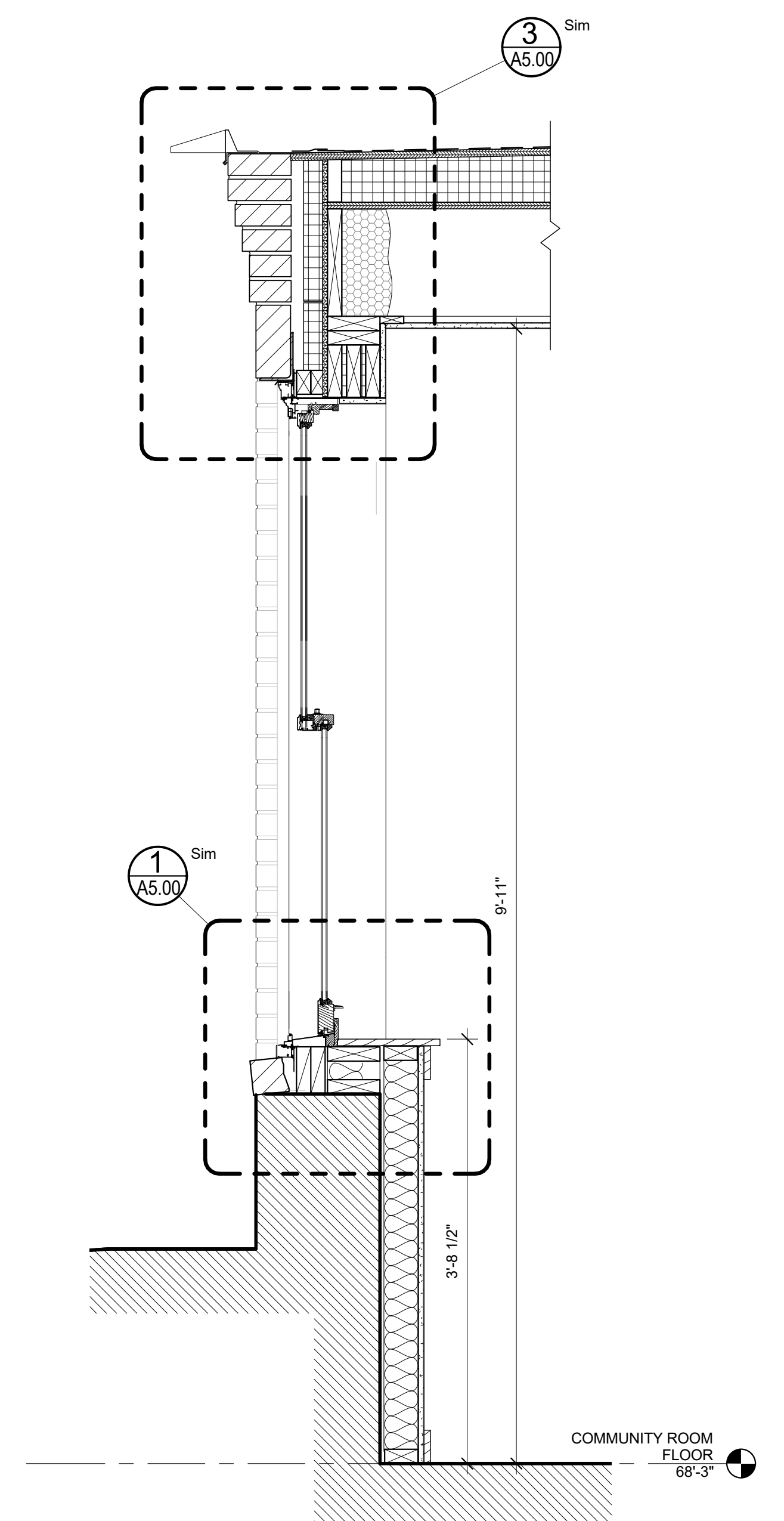
**A3.21**



**3 | COMMUNITY ROOM SECTION**  
 1/2" = 1'-0"



**2 | TYPICAL WALL SECTION**  
 1" = 1'-0"



**1 | TYPICAL WALL SECTION AT WINDOW**  
 1" = 1'-0"