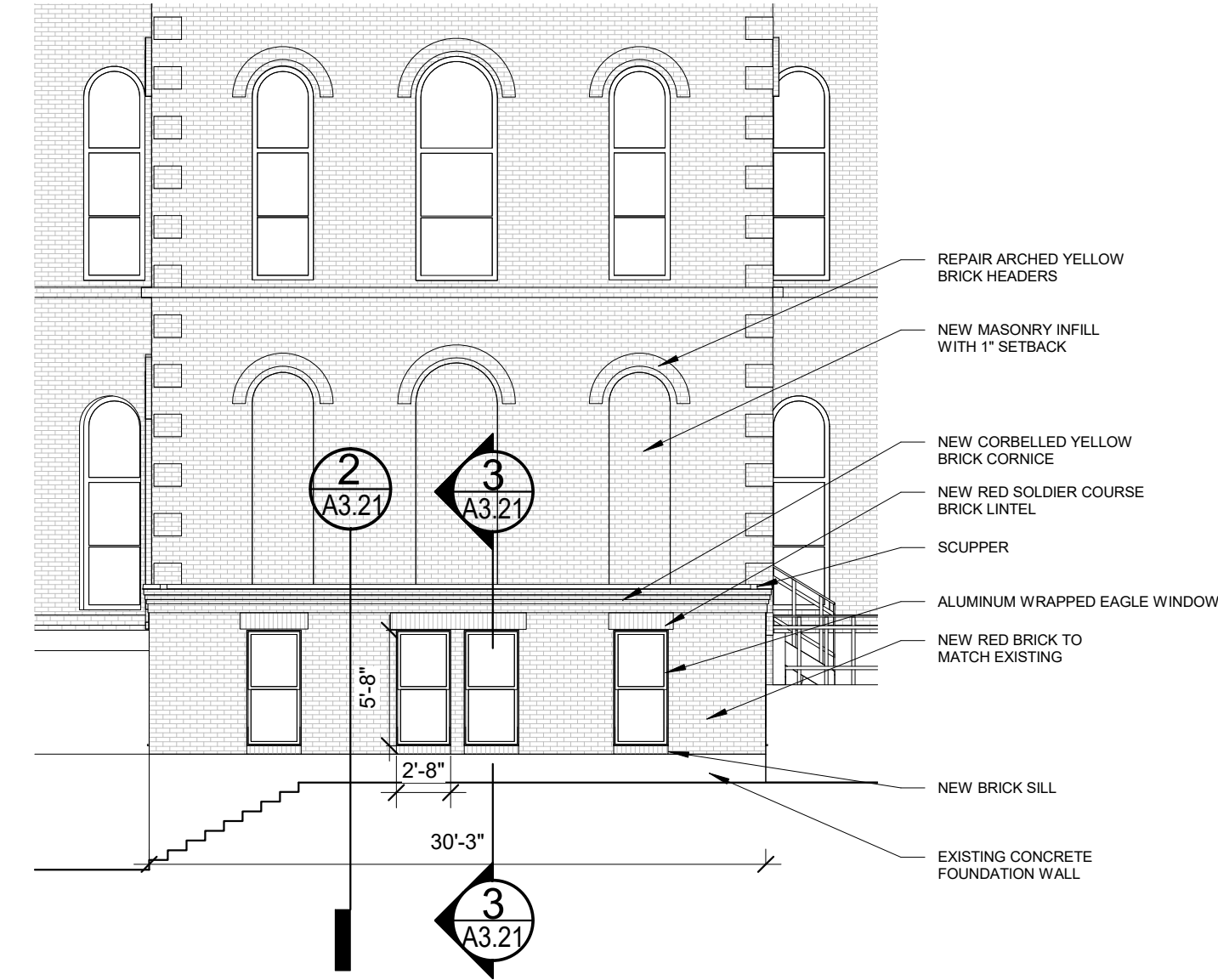
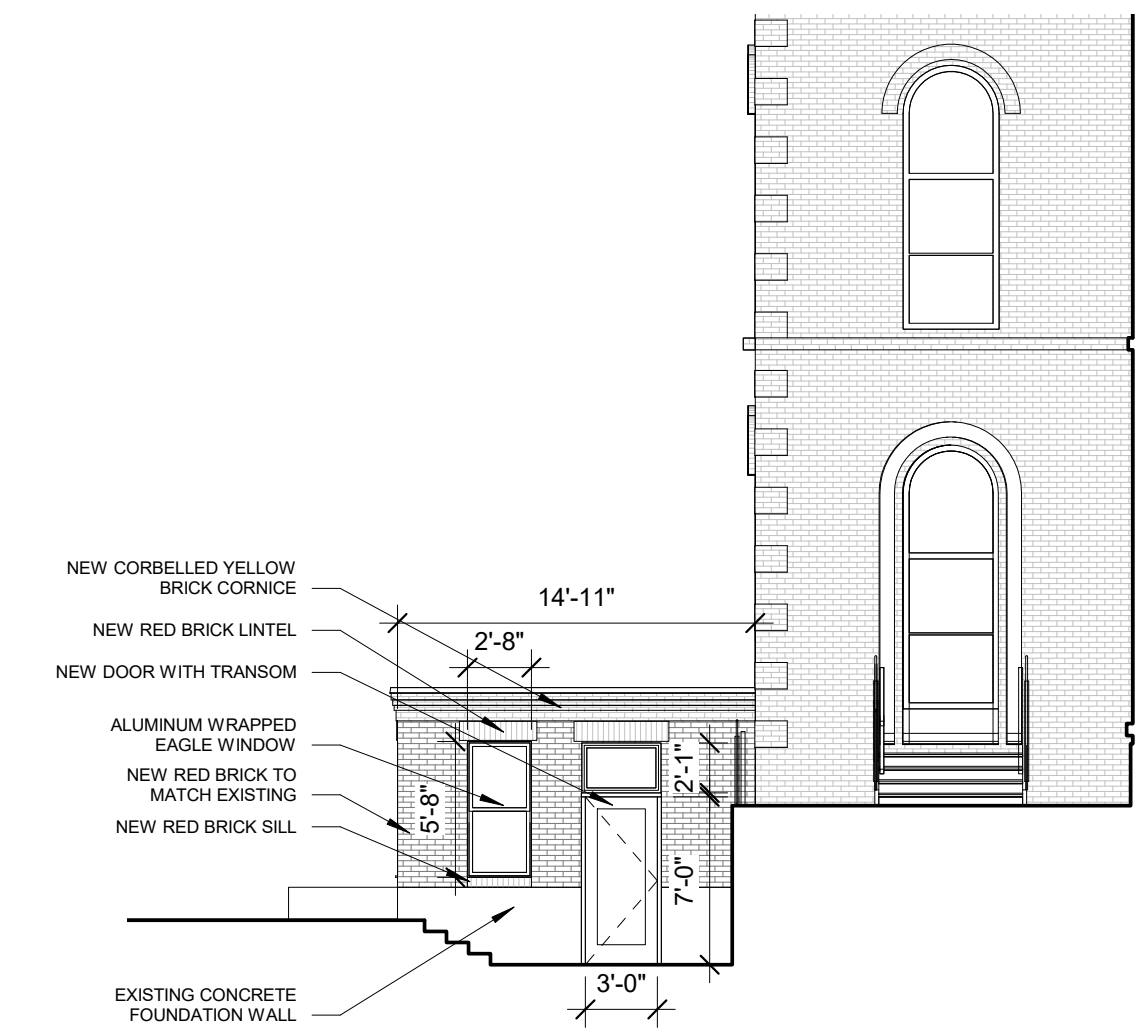


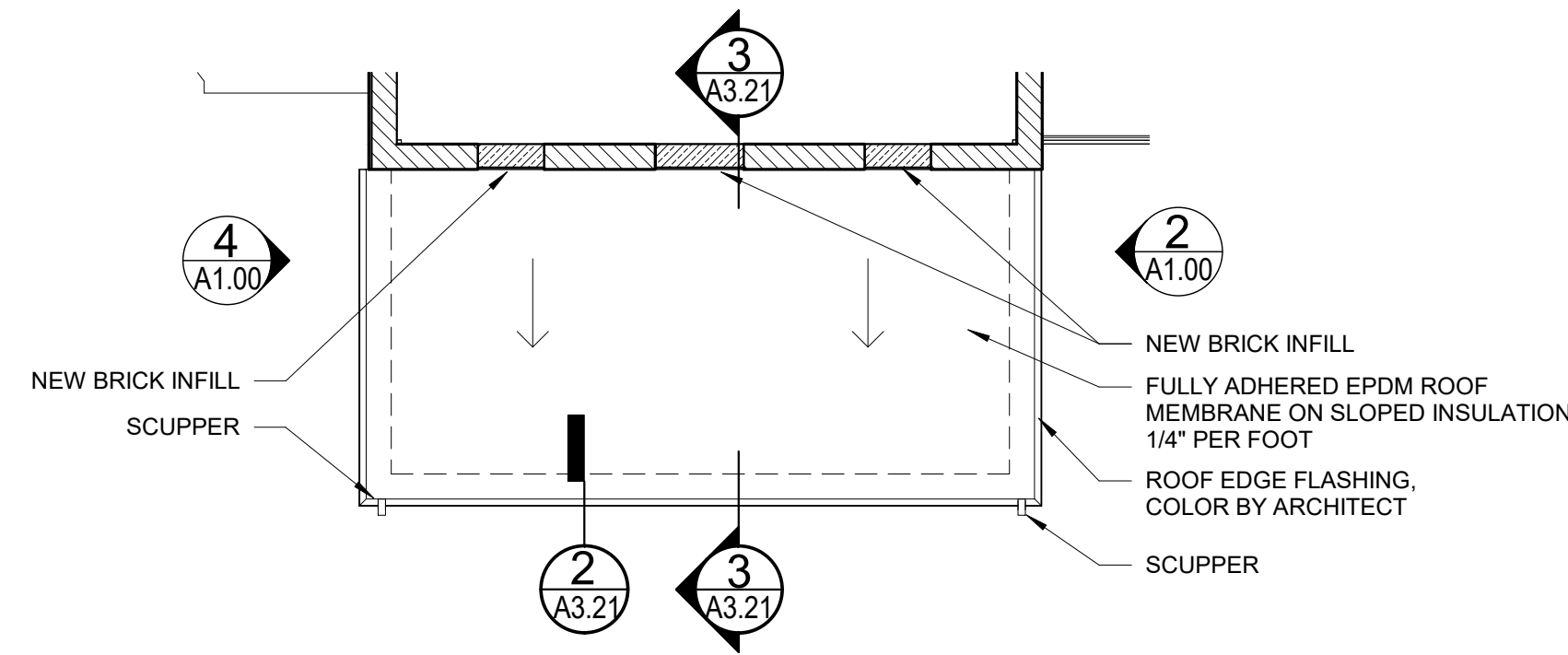
5 | WEST ELEVATION NEW
1/8" = 1'-0"



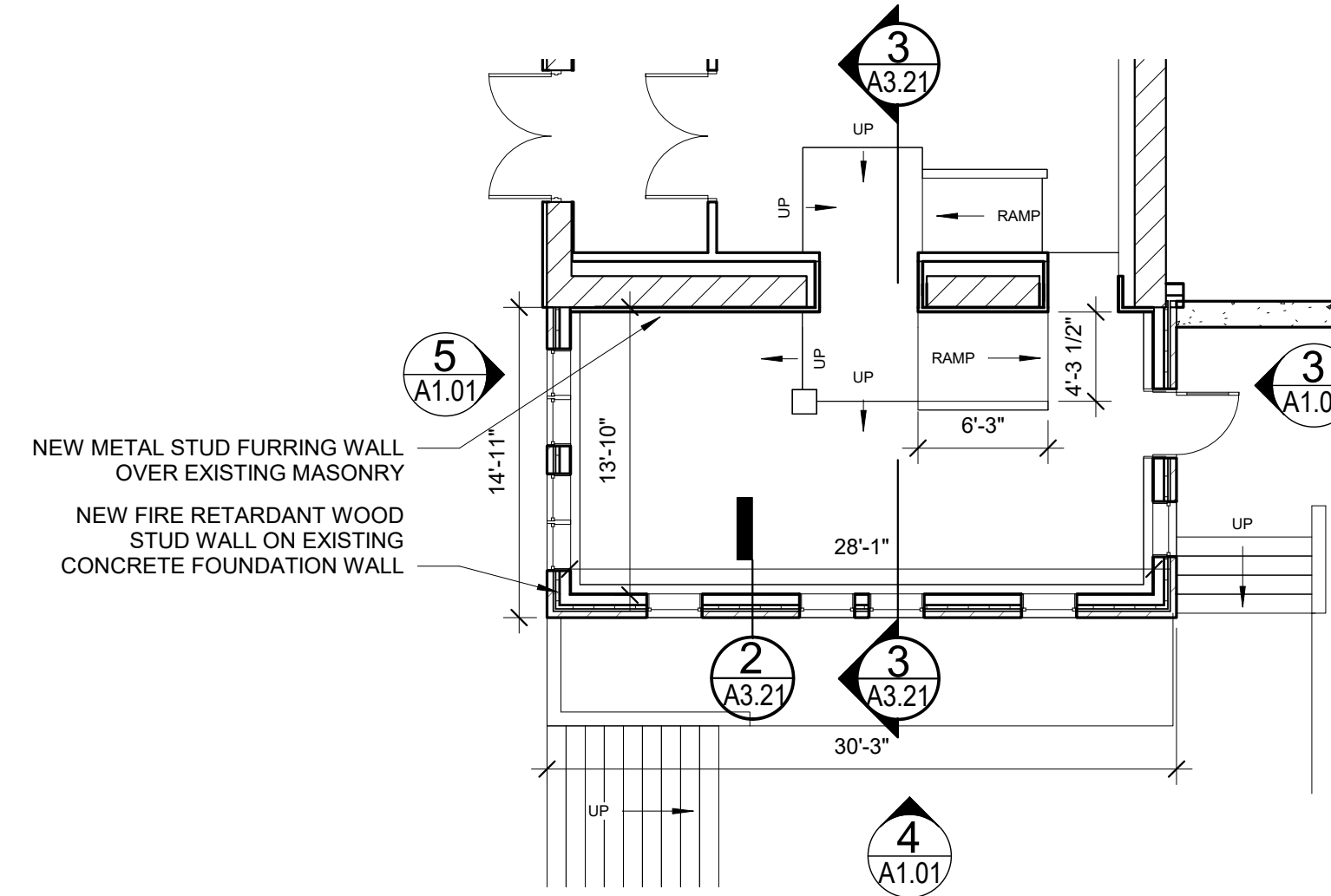
4 | SOUTH ELEVATION - NEW
1/8" = 1'-0"



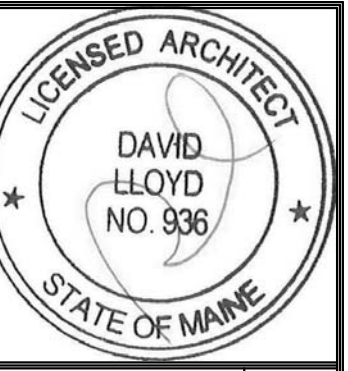
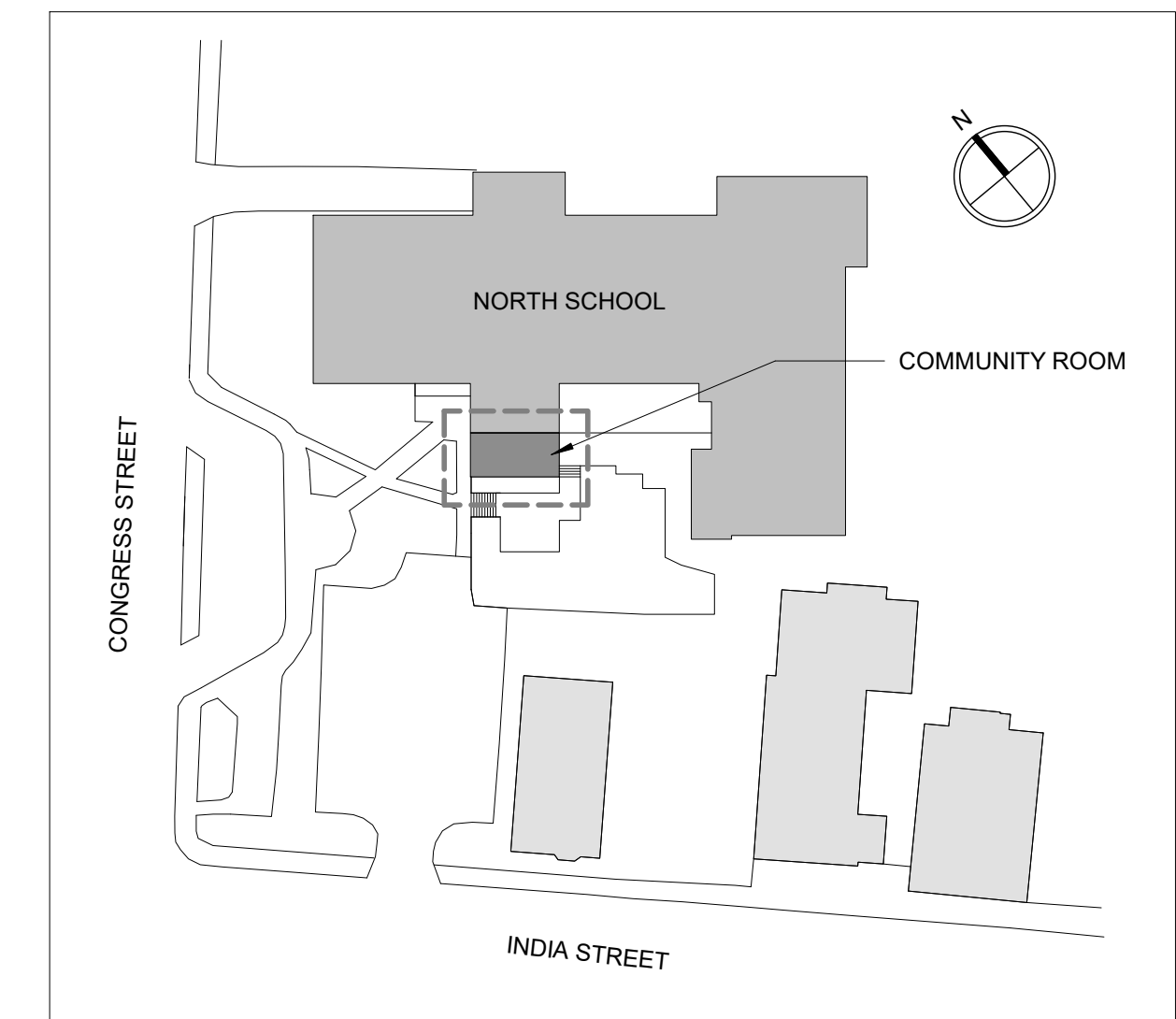
3 | EAST ELEVATION - NEW
1/8" = 1'-0"



2 | COMMUNITY ROOM ROOF PLAN
1/8" = 1'-0"



1 | GROUND FLOOR - NEW
1/8" = 1'-0"



Prepared For:
Keyeight Housing Associates LP

Consultant:

Architect:
ARCHETYPE architects
48 Union Wharf Portland, Maine 04101
(207) 772-6022 ARCHETYPE@ARCHETYPEPA.COM

Project:
NORTH SCHOOL APARTMENTS COMMUNITY SPACE
248 Congress St.
Portland ME 04101

Revisions:

Date: 10/17/2016
Scale: As indicated
NEW PLANS AND ELEVATIONS

A1.01