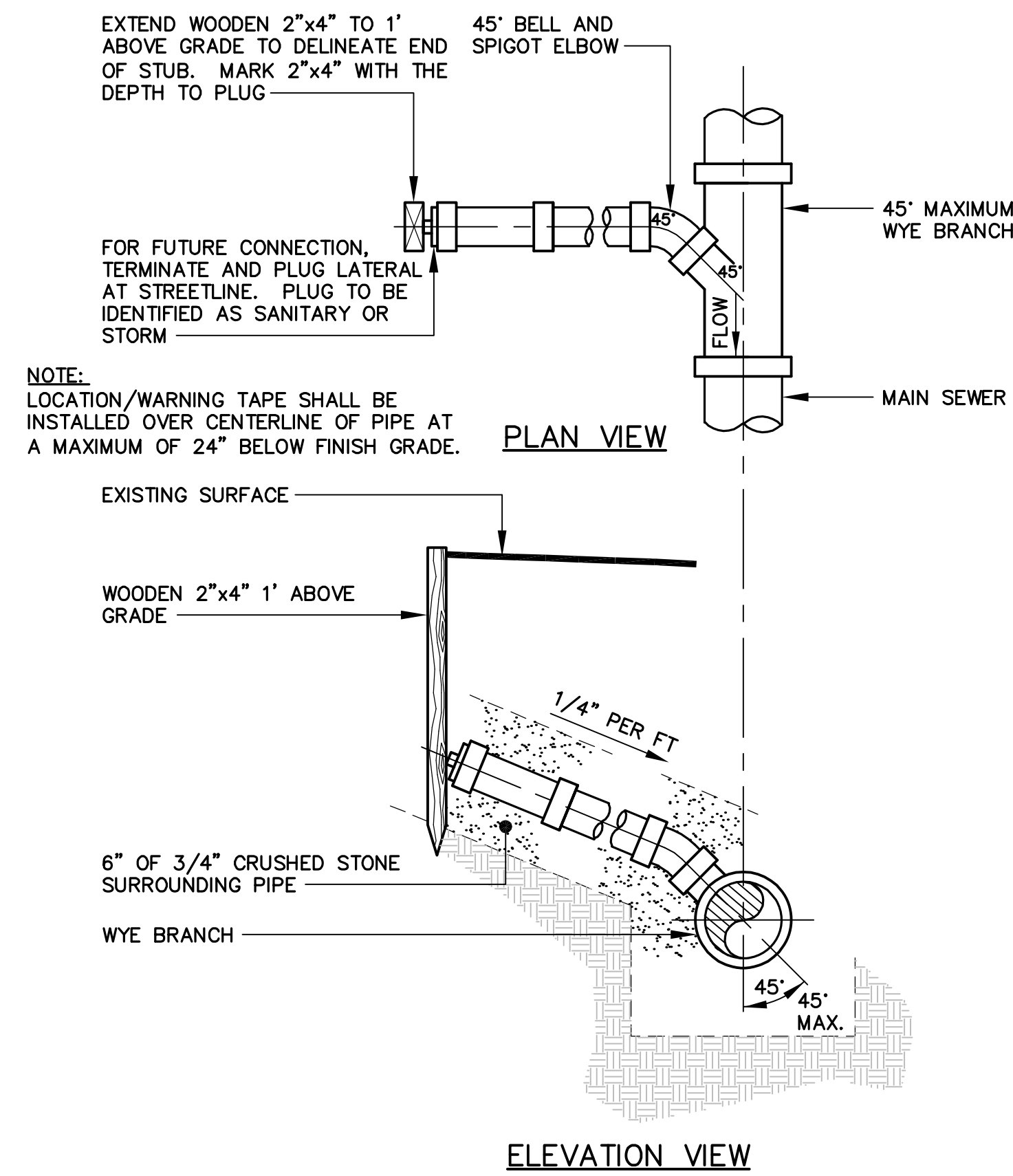
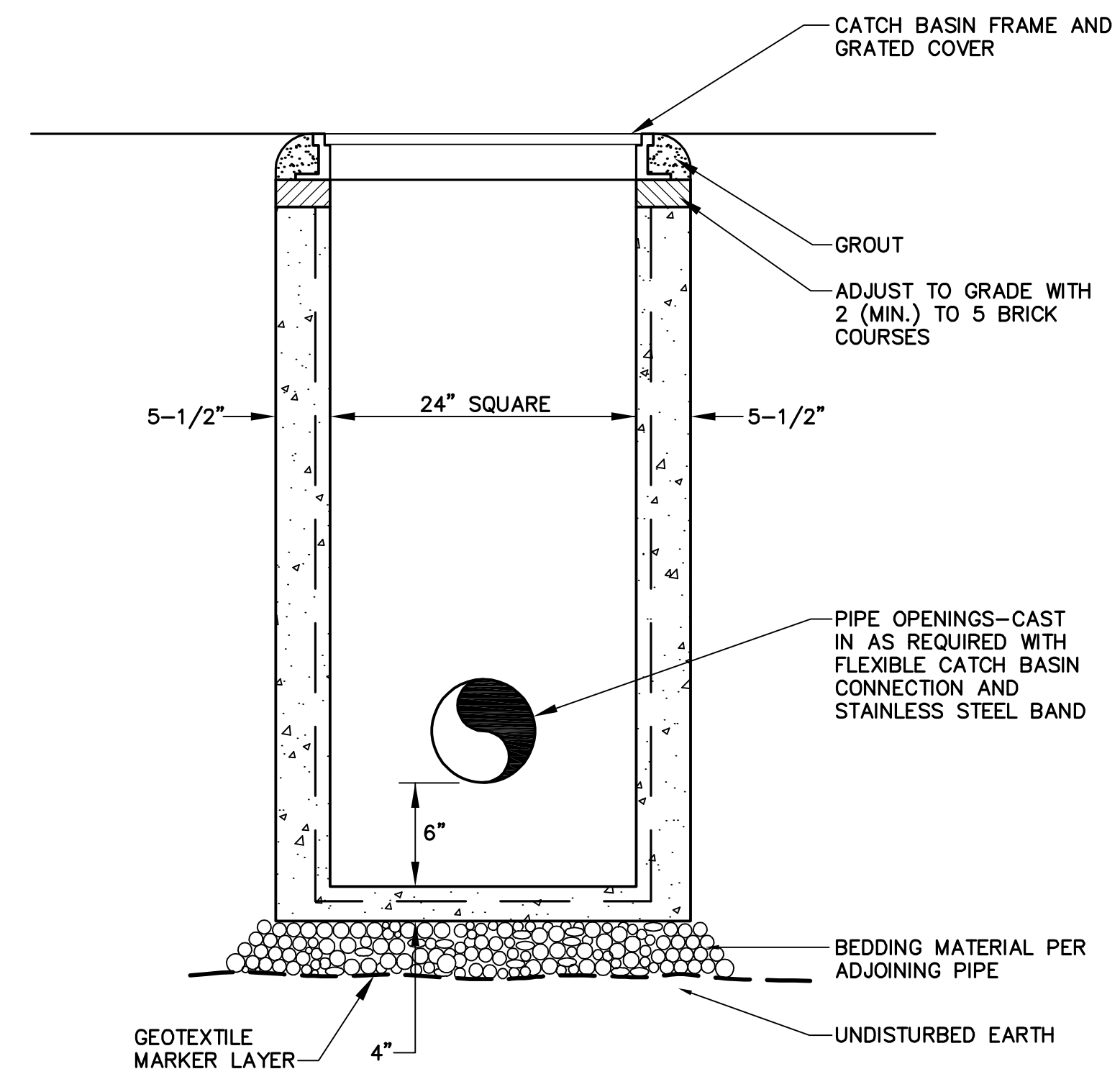


I.D.	WALL WIDTH	FLOOR THICKNESS
4'-0"	5"	6"
5'-0"	6"	6"
6'-0"	7"	6"
8'-0"	8"	8"
10'-0"	10"	9"

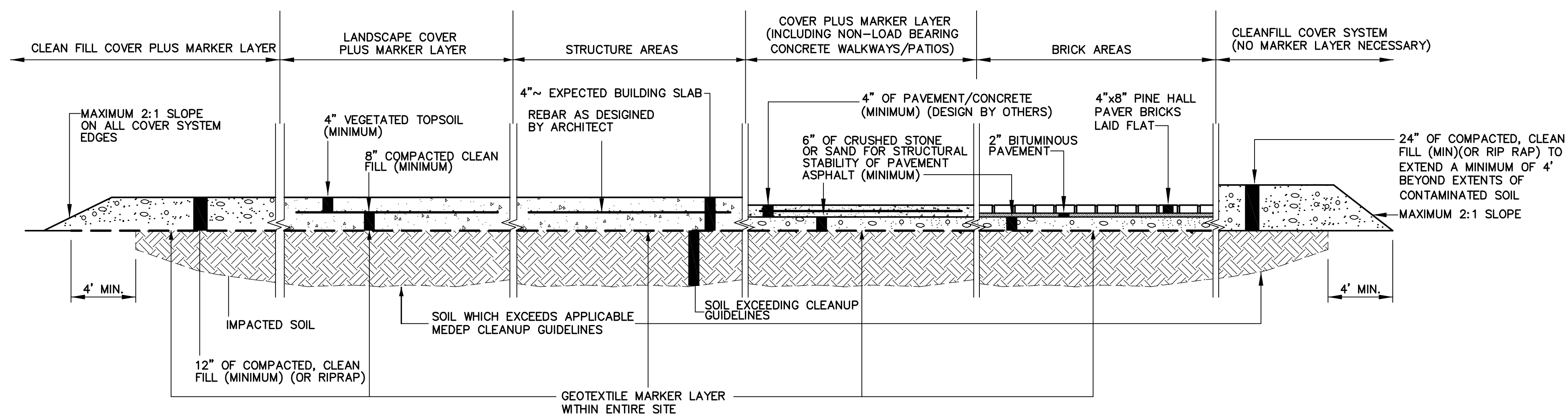
1 PRECAST CONCRETE MANHOLE
NOT TO SCALE



2 TYPICAL HOUSE LATERAL TEE/WYE CONNECTION
NOT TO SCALE



3 PRECAST CONCRETE CATCH BASIN-TYPE 'F'
NOT TO SCALE



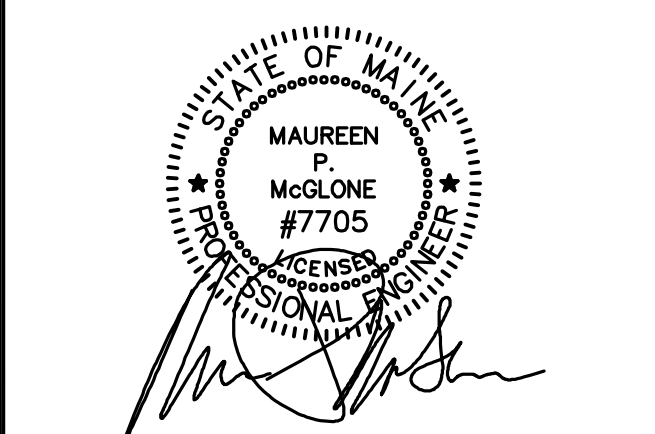
NOTE:
THE QUANTITIES IDENTIFIED ARE MINIMUM REQUIREMENTS FOR COVERING OF THE IDENTIFIED CONTAMINATED SOILS. ADDITIONAL SUB-BASE MATERIALS MAY BE REQUIRED IN AREAS PROPOSED FOR ASPHALT PAVING, BUILDINGS AND/OR CONCRETE SIDEWALKS/PATIOS, AS NECESSARY, TO MAINTAIN STRUCTURAL INTEGRITY OF THESE MATERIALS. THE SITE DESIGN ENGINEER IS REQUIRED TO MAKE THE DETERMINATION OF STRUCTURAL SUITABILITY.

4 SOIL COVER SYSTEM (WITHIN LIMITS OF SITE)
NOT TO SCALE

Project:
**20 THAMES STREET
RESIDENTIAL
CONDOMINIUM**
20 THAMES STREET
PORTLAND, MAINE

Owner:
**PORTLAND NORWICH
ACQUISITION, LLC**
P.O. Box 1383
SANIBEL, FL 33957

Applicant:
**ESSEXNORTH
PORTLAND LLC**
P.O. BOX 394
TOPSFIELD, MA 01983



CIVIL ENGINEER:
MAUREEN P. MCGLONE, PE #7705
400 COMMERCIAL STREET, SUITE 404
PORTLAND, ME 04101
207-772-2891



400 Commercial Street, Suite 404
Portland, ME 04101
Tel. (207) 772-2891
Fax (207) 772-3248
www.ransomenv.com

**CONSTRUCTION
DETAILS**

A CITY SUBMISSION 03/09/17

No. Revision/Issue Date

Design by: MPM Checked by: SJB
Drawn by: JAR Approved by: SJB

Project: 150.06094 Date: MARCH 2017

Sheet No:

C2.3