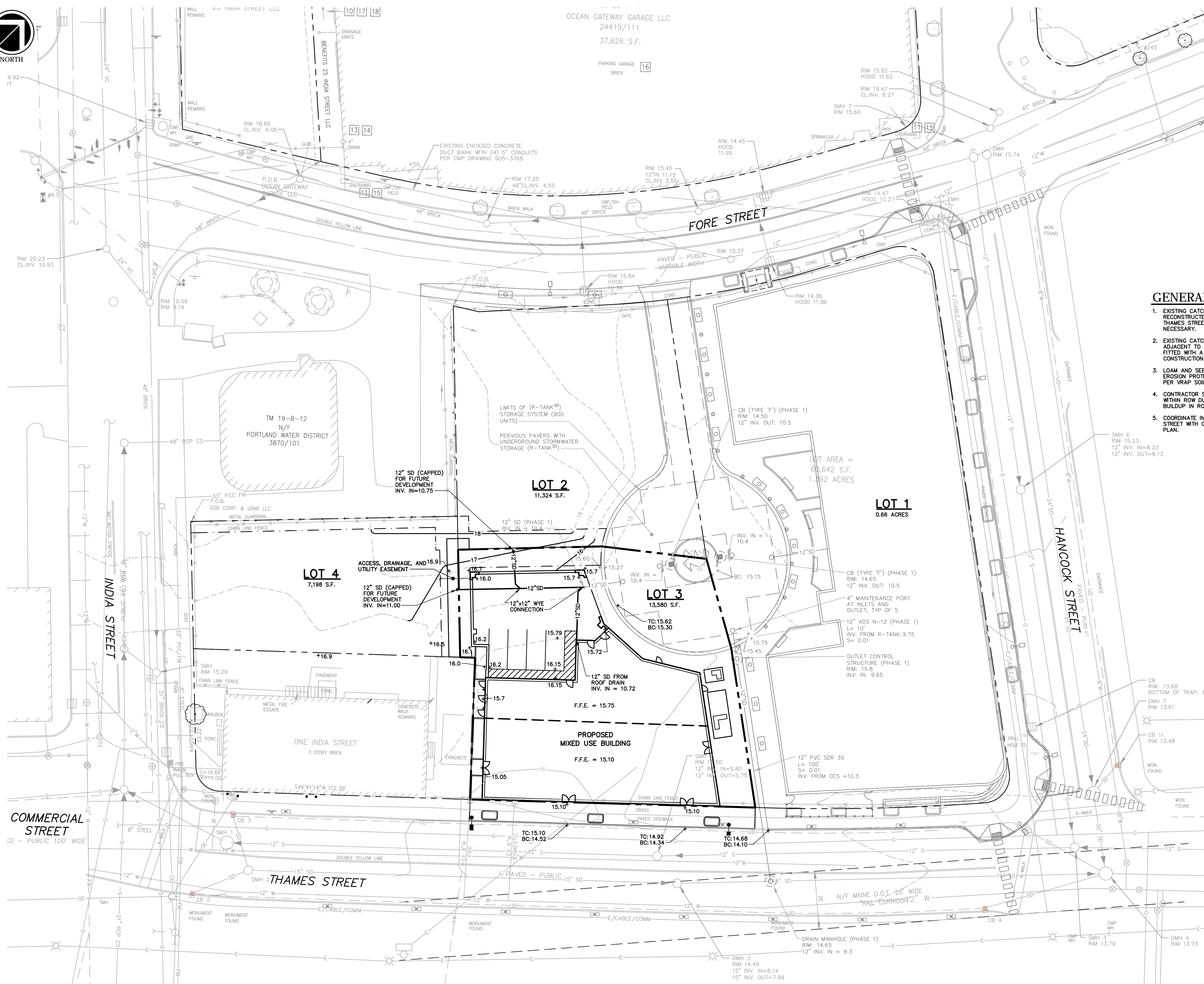




NORTH



GENERAL NOTES

- EXISTING CATCH BASIN STRUCTURES ALONG THE RECONSTRUCTED CURB LINE AT FORE, HANCOCK AND THAMES STREETS SHALL BE RECONSTRUCTED AS NECESSARY.
- EXISTING CATCH BASINS WITHIN THE RIGHT-OF-WAY, ADJACENT TO THE LIMITS OF CONSTRUCTION SHALL BE FITTED WITH A SILT SACK FOR THE DURATION OF CONSTRUCTION.
- LOAM AND SEED DISTURBED AREAS OF LOTS 1 & 2 FOR EROSION PROTECTION. INCLUDE GEOTEXTILE MARKER LAYER PER WRAP SOIL MANAGEMENT PLAN.
- CONTRACTOR SHALL PROVIDE FREQUENT STREET SWEEPING WITHIN ROW DURING CONSTRUCTION TO MINIMIZE SEDIMENT BUILDUP IN ROADWAY.
- COORDINATE INSTALLATION OF NEW CATCH BASIN ON FORE STREET WITH CITY DPW AND FUTURE STORM SEPARATION PLAN.

Project:
**20 THAMES STREET
 RESIDENTIAL
 CONDOMINIUM**
 20 THAMES STREET
 PORTLAND, MAINE

Owner:
**PORTLAND NORWICH
 ACQUISITION, LLC**
 P.O. Box 1383
 SANIBEL, FL 33957

Applicant:
**ESSEXNORTH
 PORTLAND LLC**
 P.O. BOX 394
 TOPSFIELD, MA 01983

CIVIL ENGINEER:
MAUREEN P. MCGLONE, PE #7705
 400 COMMERCIAL STREET, SUITE 404
 PORTLAND, ME 04101
 207-772-2891

RANSOM
 Consulting
 Engineers
 and Scientists
 400 Commercial Street, Suite 404
 Portland, ME 04101
 Tel. (207) 772-2891
 Fax (207) 772-3248
 www.ransomenv.com

GRADING, DRAINAGE AND EROSION CONTROL PLAN

A	CITY SUBMISSION	03/09/17
No.	Revision/Issue	Date
Design by:	MPM	Checked by: SJB
Drawn by:	JAR	Approved by: SJB
Project:	150.06094	Date: FEBRUARY 2017
Sheet No:	C1.2	
	Sheet 6 of 22	

