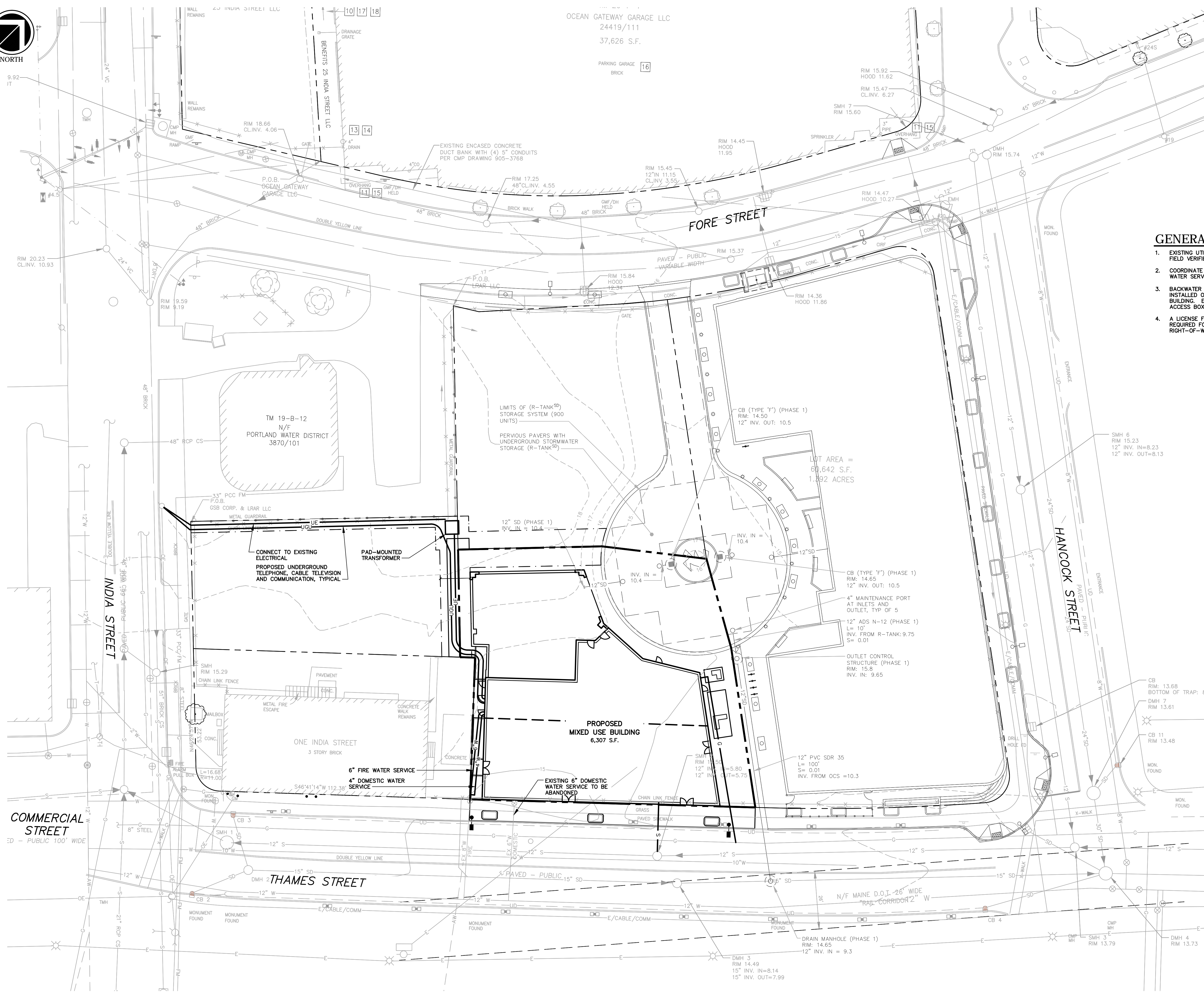




NORTH



GENERAL NOTES

1. EXISTING UTILITIES SHOWN ARE APPROXIMATE AND SHALL BE FIELD VERIFIED.
2. COORDINATE INSTALLATION OF FIRE SERVICE AND DOMESTIC WATER SERVICE WITH PORTLAND WATER DISTRICT.
3. BACKWATER VALVES (BACKFLOW PREVENTER) SHALL BE INSTALLED ON EACH SANITARY LINE AS IT EXITS THE BUILDING. EACH VALVE SHALL BE PLACED WITHIN AN ACCESS BOX SUPPLIED BY MANUFACTURER.
4. A LICENSE FROM THE CITY OF PORTLAND SHALL BE REQUIRED FOR ANY BACKWATER VALVES WITHIN THE CITY RIGHT-OF-WAY.

Project:
**20 THAMES STREET
 RESIDENTIAL
 CONDOMINIUM**
 20 THAMES STREET
 PORTLAND, MAINE

Owner:
**PORTLAND NORWICH
 ACQUISITION, LLC**
 P.O. Box 1383
 SANIBEL, FL 33957

Applicant:
**ESSEXNORTH
 PORTLAND LLC**
 P.O. BOX 394
 TOPSFIELD, MA 01983


 CIVIL ENGINEER:
MAUREEN P. MCGLONE, PE #7705
 400 COMMERCIAL STREET, SUITE 404
 PORTLAND, ME 04101
 207-772-2891


RANSOM
 Consulting
 Engineers
 and Scientists
 400 Commercial Street, Suite 404
 Portland, ME 04101
 Tel. (207) 772-2891
 Fax (207) 772-3248
 www.ransomenv.com

UTILITY PLAN

| | | |
|------------|-----------------|---------------------|
| A | CITY SUBMISSION | 03/09/17 |
| No. | Revision/Issue | Date |
| Design by: | MPM | Checked by: SJB |
| Drawn by: | JAR | Approved by: SJB |
| Project: | 150.06094 | Date: FEBRUARY 2017 |
| Sheet No: | C1.1 | |
| | Sheet 5 of 22 | |