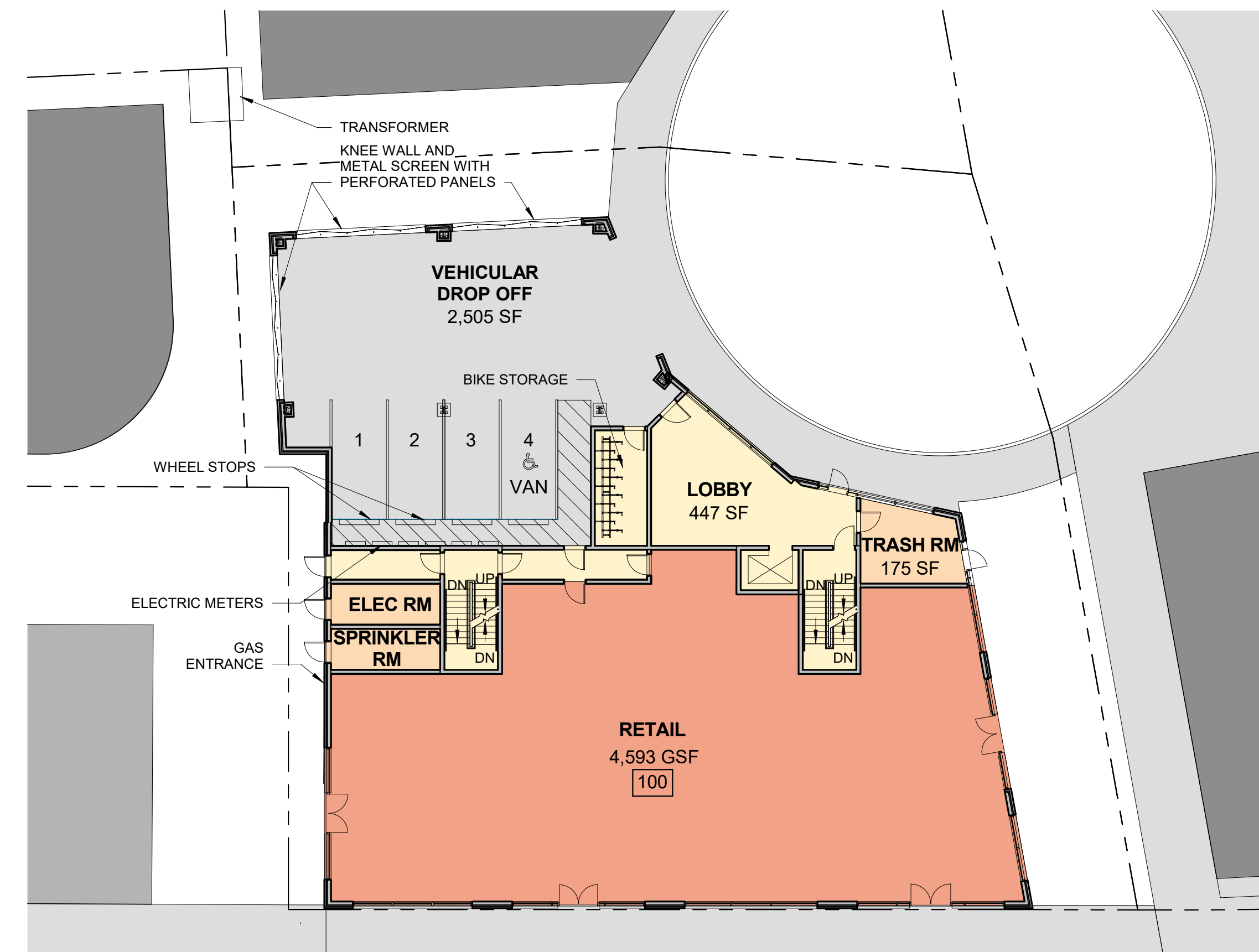
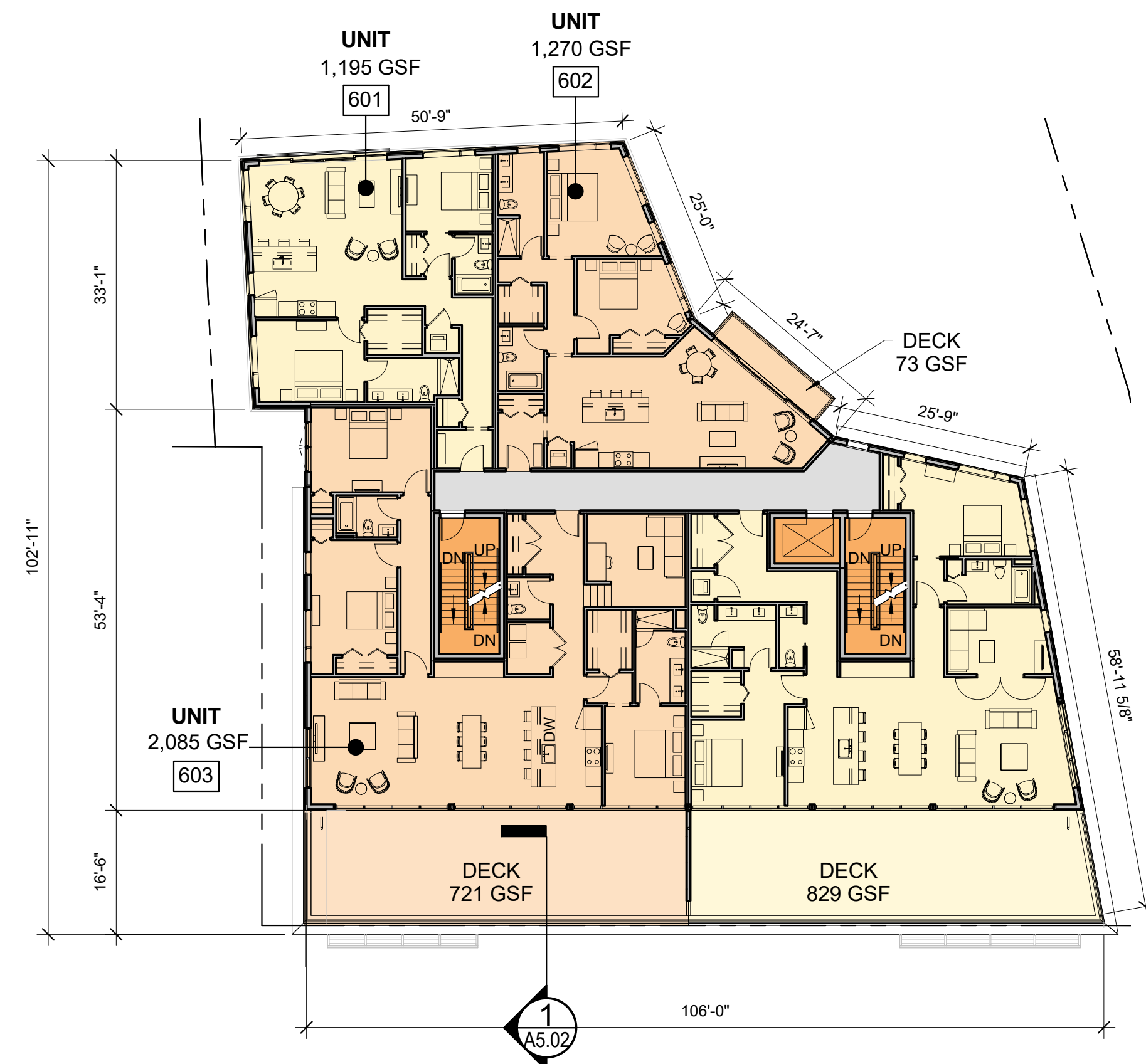




2 | 2ND - 5TH FLOOR
1/16" = 1'-0"



1 | 1ST FLOOR
1/16" = 1'-0"



3 | 6TH FLOOR
1/16" = 1'-0"

Prepared For:
Owner

Consultant:

ARCHETYPE
architects
48 Union Wharf Portland, Maine 04101
(207) 772-6022 ARCHETYPE@ARCHETYPEPA.COM

Architect:

THAMES STREET
BUILDING
20 Thames Street, Portland Maine

Project:

Revisions:

Date: FEB. 23, 2017
Scale: 1/16" = 1'-0"

FLOOR PLANS

A1.1