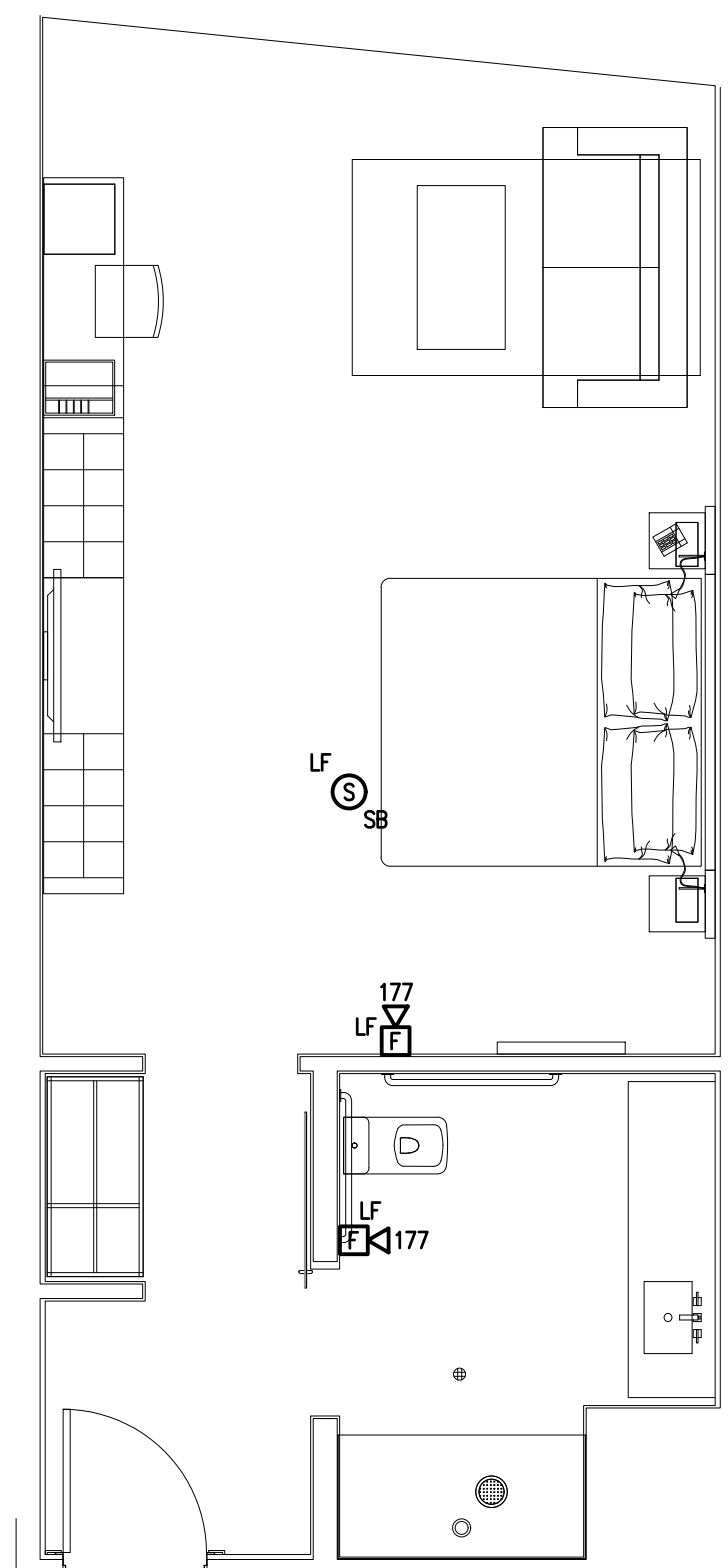
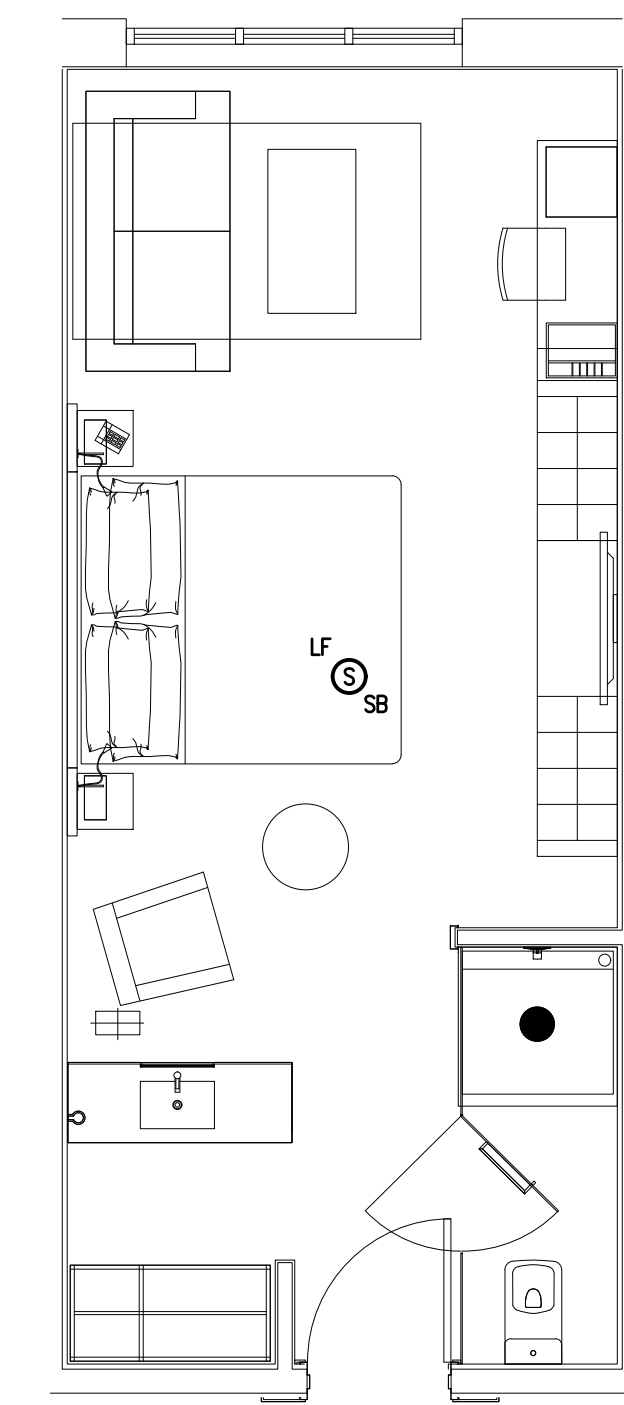


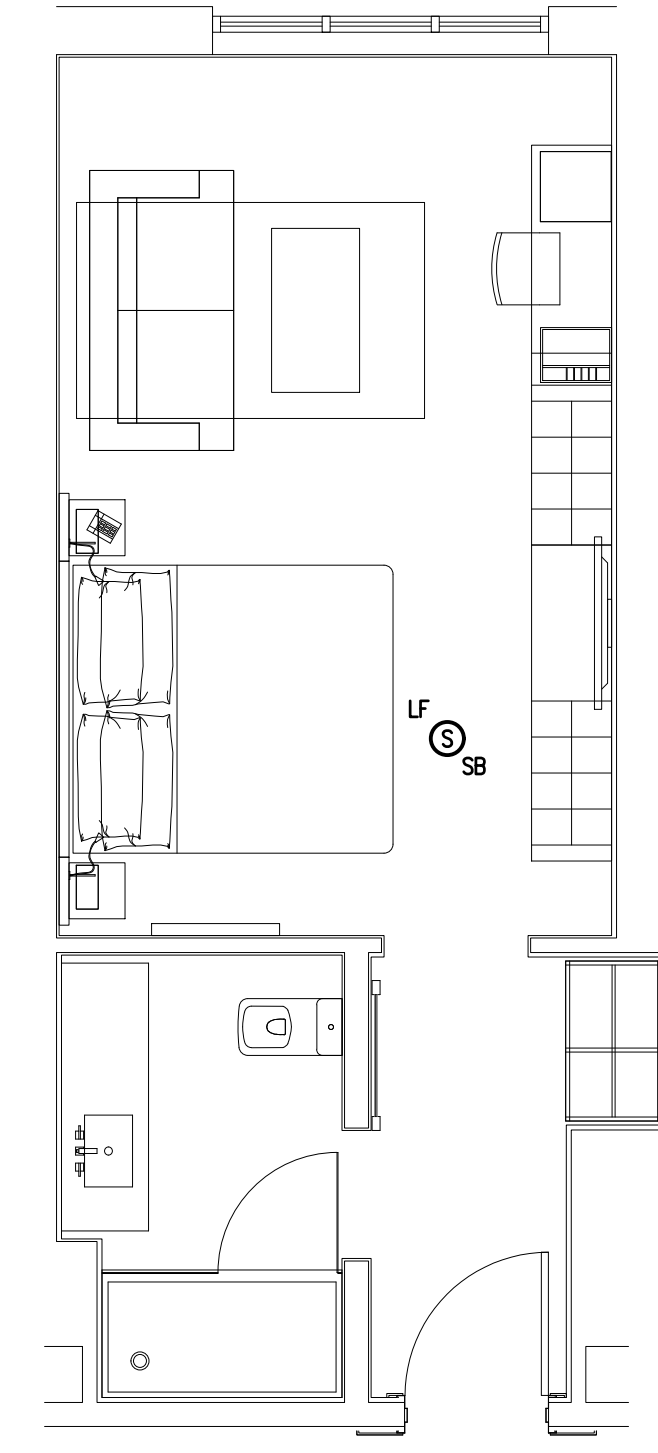
4 ELECTRICAL - QUEEN QUEEN STUDIO PLAN
SCALE: 1/4"= 1'-0"



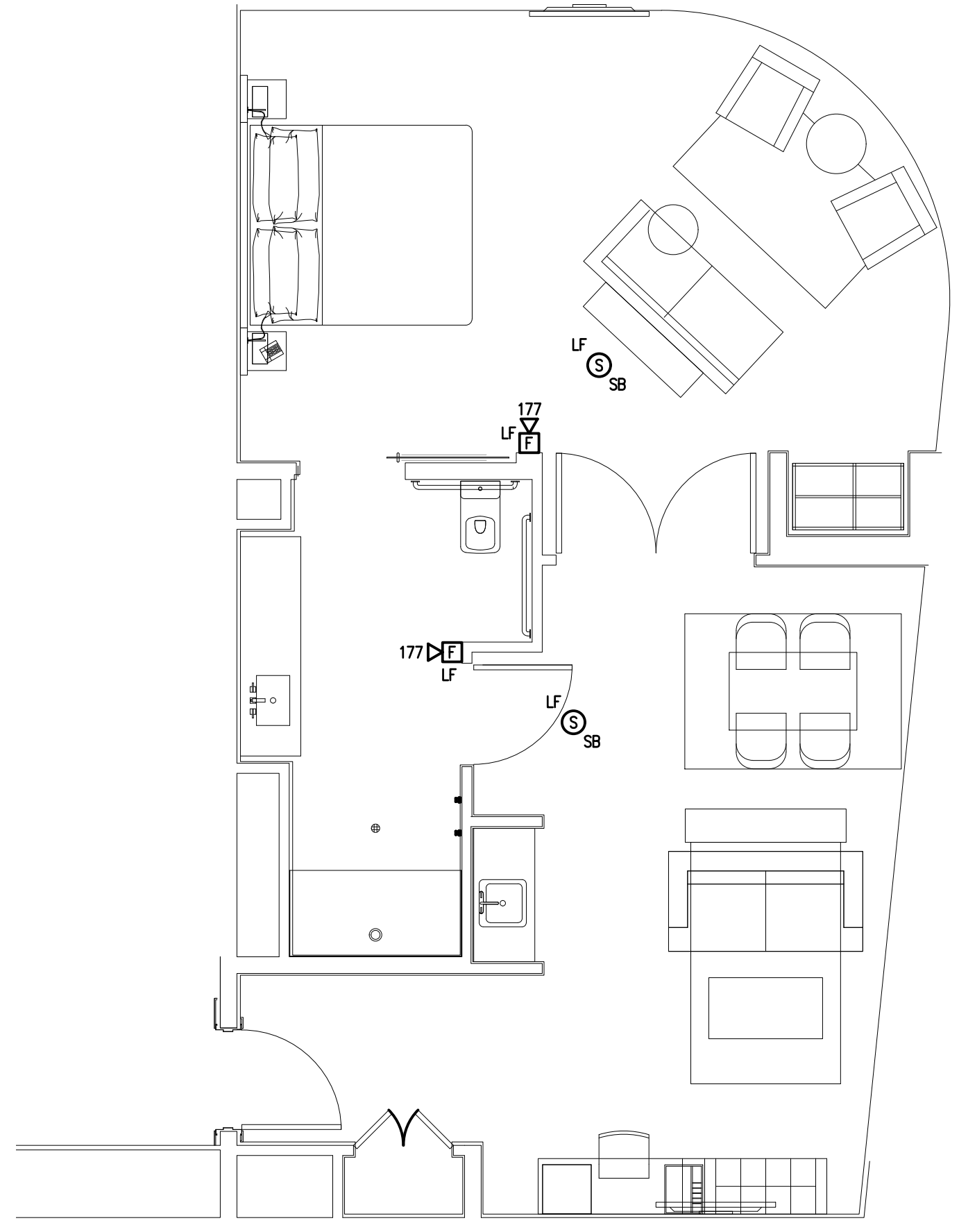
3 ELECTRICAL - ACC KING STUDIO PLAN
SCALE: 1/4"= 1'-0"



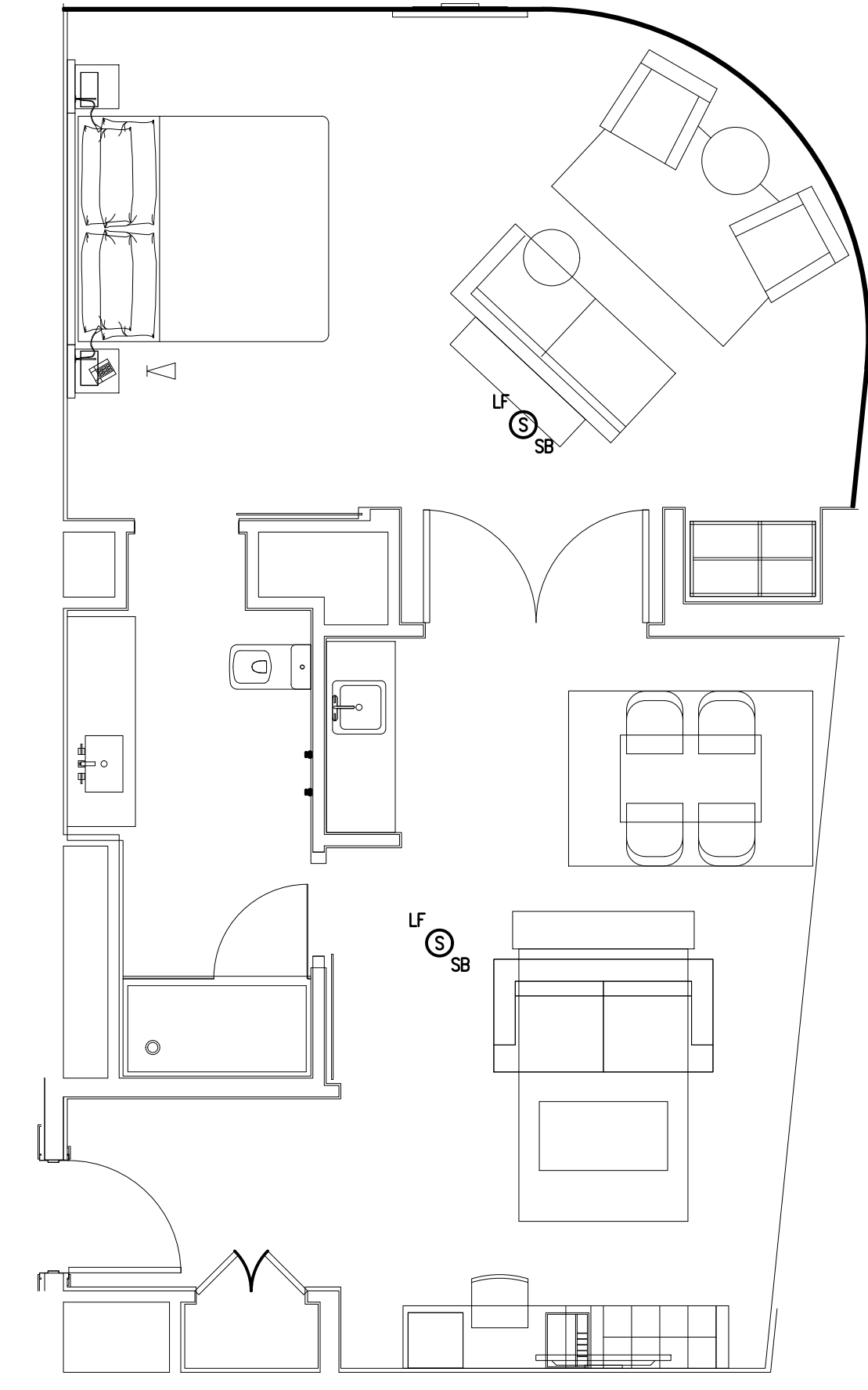
2 ELECTRICAL - METRO KING STUDIO PLAN
SCALE: 1/4"= 1'-0"



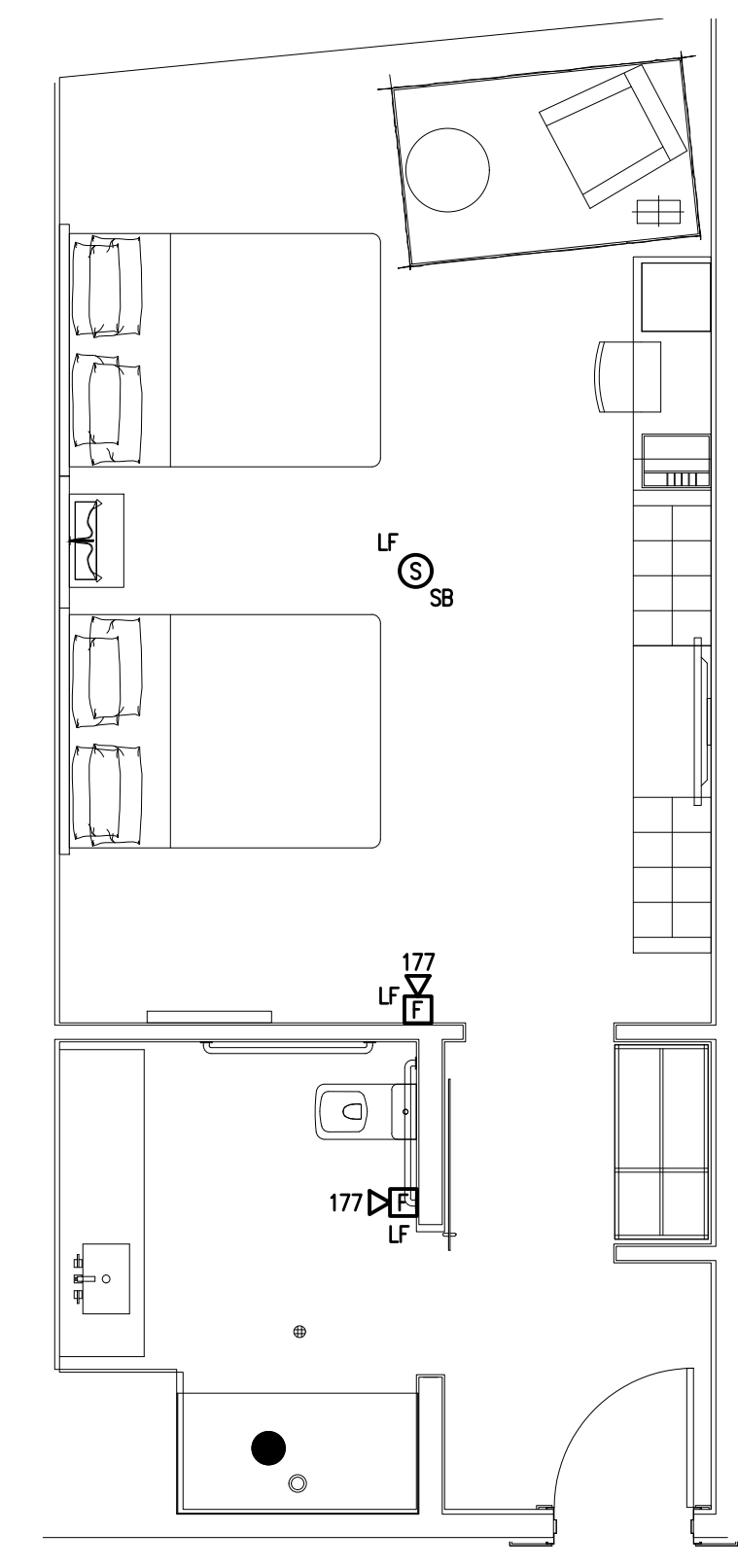
1 ELECTRICAL - KING STUDIO PLAN
SCALE: 1/4"= 1'-0"



7 ELECTRICAL - ACC 1 BEDROOM PLAN
SCALE: 1/4"= 1'-0"

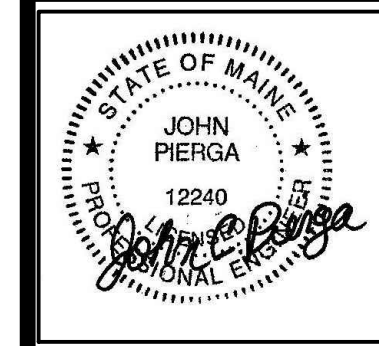


6 ELECTRICAL - 1 BEDROOM PLAN
SCALE: 1/4"= 1'-0"



5 ELECTRICAL - ACC QUEEN QUEEN STUDIO PLAN
SCALE: 1/4"= 1'-0"

- NOTES:**
1. E.C. SHALL COORDINATE ALL DEVICE TYPES, LOCATIONS AND HEIGHTS WITH INTERIORS PLANS FOR FINAL LOCATIONS. DIMENSIONS SHALL BE TAKEN FROM INTERIORS/OWNERS PLANS FOR EXACT LOCATIONS OF EQUIPMENT.
 2. REFER TO UNIT PLANS AND OVERALL FLOOR PLANS FOR ACCESSABLE/HEARING IMPAIRED AUDIO/VISUAL REQUIREMENTS. (TYPICAL FOR ALL)
 3. VISUAL DEVICES IN HEARING IMPAIRED GUESTROOMS SHALL BE LOCATED WITHIN 16 LINEAR FEET ON FINAL LOCATION OF INTERIORS LOCATING THE PILLOWS.



AC HOTELS by MARRIOTT
Fore Street / Hancock Street / Thames Street
Portland, Maine

REVISION:

ISSUED:
ISSUE FOR PERMIT - 7-28-17
ISSUE FOR CONSTRUCTION - 8-30-17

project architect: JCP
drawn by: CMF

**GUEST ROOM
ELECTRICAL
PLANS**

sheet number:

E4.02

BLW Engineers, Inc.
311 Great Road, Post Office Box 1551
Lewiston, Maine 04240
Tel: 207.534.8007
www.blwengineers.com
BLW ENGINEERS, INC. - LICENSED PROFESSIONAL ENGINEERS