



ARCHITECT:

**OPECHEE  
CONSTRUCTION  
BELMONT, NH**

CONTRACTOR:

**OPECHEE  
CONSTRUCTION  
BELMONT, NH**

LEGEND:

- Riser Pipe Riser Up
- Riser Pipe Riser Down
- Steel Pipe (WET)
- CPVC Pipe (WET)
- ▲ Wet System Riser
- Hydraulic Calc. Point
- [xx-x] Pipe Elevation A.F.F.

DESIGN NOTES:

\*ALL PIPING 1/2" AND LARGER TO BE SCHEDULE 10 STEEL W/ GROOVED FITTING OR CPVC.  
\*ALL PIPING 1/4" AND SMALLER TO BE SCHEDULE 40 STEEL WITH THREADED OR GROOVED FITTING OR CPVC.  
\*POSITION, LOCATION, SPACING, AND USE OF SPRINKLERS AND HANGERS SHALL BE IN ACCORDANCE WITH NFPA 13 2016 ed.  
\*HYDRAULIC CALCULATION PROCEDURES HAVE BEEN DONE IN ACCORDANCE WITH NFPA 13 2016 ed. (SEE PLANS FOR LOCATION OF REMOTE AREAS, HYDRAULIC REFERENCE POINTS, AND SYSTEM DEMANDS)  
\*ALL ELECTRICAL WORK TO BE DONE BY OTHERS.  
\*DIMENSIONS AND LOCATIONS GIVEN FOR SPRINKLER HEADS AND PIPE MAY VARY TO ACCOMMODATE ACTUAL FIELD CONDITIONS.  
\*OWNER TO PROVIDE SUFFICIENT HEAT TO PREVENT FREEZING IN WATER FILLED SPRINKLER PIPE AND EQUIPMENT.  
\*OTHER TRADES TO COORDINATE THEIR WORK WITH SPRINKLER CONTRACTOR.  
\*ALL NEWLY INSTALLED SPRINKLER HEADS ARE TO BE QUICK RESPONSE U.L.C.  
\*OWNER IS RESPONSIBLE FOR MAINTAINING THE SPRINKLER SYSTEMS IN ACCORDANCE WITH THE CURRENT EDITION OF NFPA 25.  
\*INSPECTIONS TESTING AND MAINTENANCE OF WATER BASED FIRE PROTECTION SYSTEMS AND/OR ALL APPLICABLE FEDERAL, STATE, AND LOCAL LAWS, CODES AND ORDINANCES.

HEAD LEGEND:

- RELIABLE\*  
MODEL F1 RES 58 CCP  
(155/155)  
K=5.8
- 1/2" CONCEALED RESIDENTIAL  
SPRINKLER PIPE AND EQUIPMENT  
(16' x 16' SPACING)

- RELIABLE\*  
MODEL F1 RES 58  
(84/155)  
K=5.8
- 1/2" RESIDENTIAL WHITE  
SEMI-RECESSED SIDEWALL  
(16' x 20' SPACING)

- RELIABLE\*  
MODEL F1FR 56  
(18/155)  
K=5.6
- 1/2" SEMI-RECESSED  
WHITE PENDENT  
(225 SQ. FT. SPACING - LIGHT)  
(130 SQ. FT. SPACING - ORD.)

- RELIABLE\*  
MODEL F1FR 56  
(1/200)  
K=5.6
- 1/2" BRASS  
HORIZONTAL SIDEWALL  
(100 SQ. FT. SPACING - ORD.)

\* OR APPROVED EQUAL  
TOTAL HEADS ON SHEET: 258  
SCALE: 1/8"=1'-0"

DATE: APRIL 14, 2017  
DESIGNER: JEREMY A. FOSS  
MAINE RMS #808  
NICET LEVEL III CERT. #126801  
CHECKED BY: E. POULIN (RMS# 515)  
NICET LEVEL IV CERT. # 108534

LOCATION:  
FORE, HANCOCK AND  
THAMES STREETS  
PORTLAND, ME

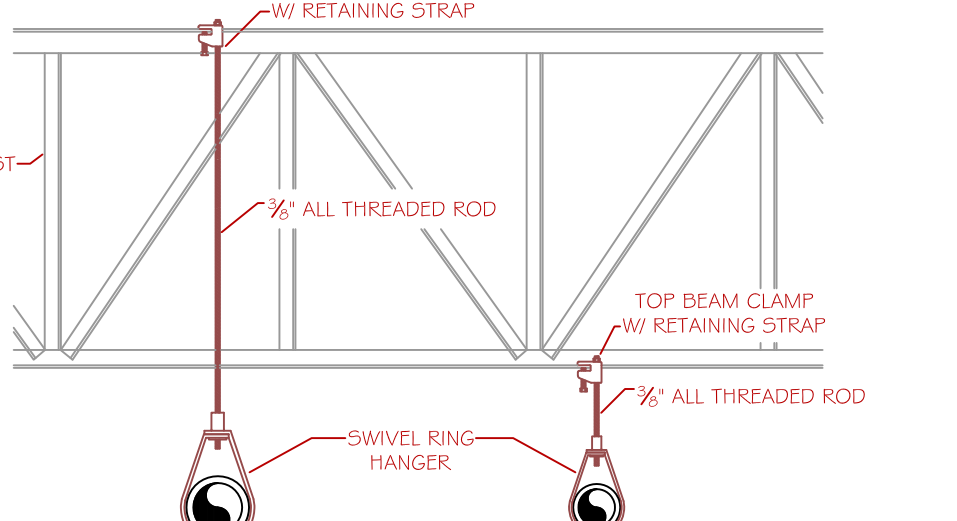
DRAWING TITLE:

**AC HOTEL  
(THIRD & FOURTH FLR.)  
FIRE PROTECTION PLAN  
(NFPA 13 2016 ed.)**

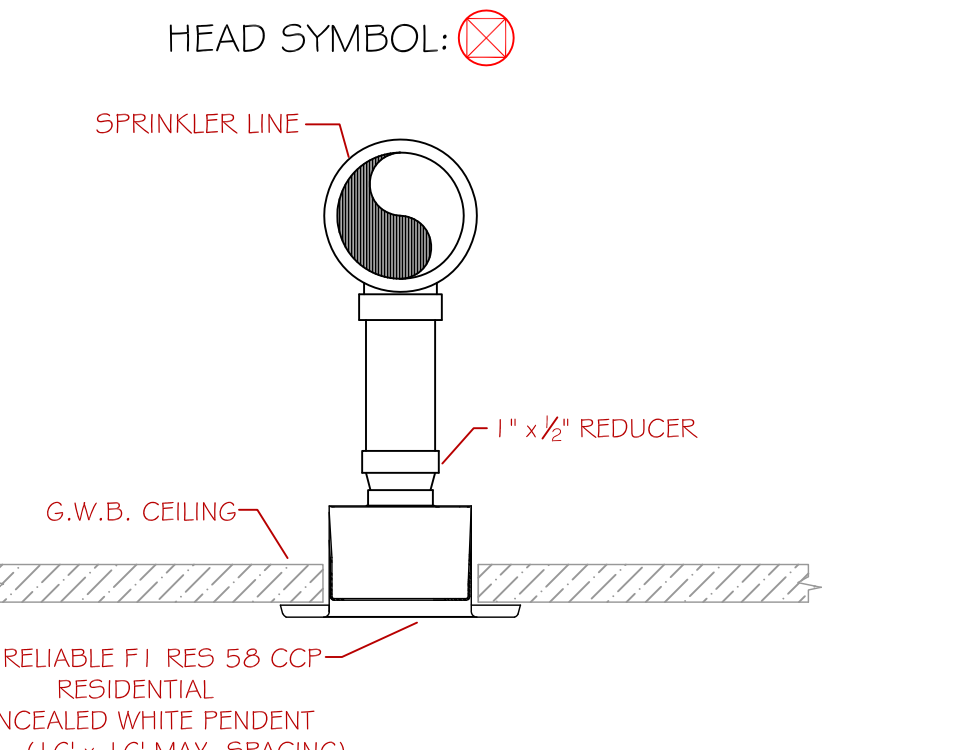
DRAWING NO:  
**FP-1.2**

**NOTES FOR SPRINKLER COVERAGE  
WITHIN DWELLING UNITS**

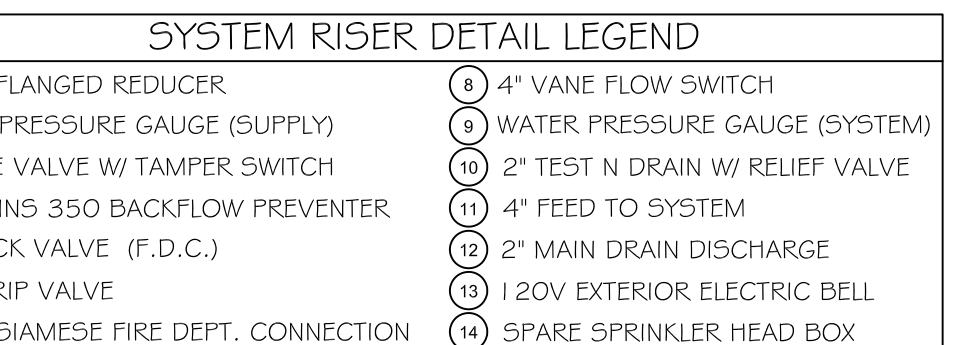
- BATHROOMS:**
- 8.15.8.1.1 - UNLESS SPRINKLERS ARE REQUIRED BY 8.15.8.1.2 OR 8.15.8.1.3, SPRINKLERS SHALL NOT BE REQUIRED IN BATHROOMS THAT ARE LOCATED WITHIN DWELLING UNITS, THAT DO NOT EXCEED 55 SQUARE FEET IN AREA, AND THAT HAVE WALLS AND CEILINGS OF NONCOMBUSTIBLE OR LIMITED-COMBUSTIBLE MATERIALS WITH A 15-MINUTE THERMAL BARRIER RATING, INCLUDING THE WALLS AND CEILING BEHIND ANY SHOWER ENCLOSURE OR TUB.
  - 8.15.8.1.2 - SPRINKLERS SHALL BE REQUIRED IN BATHROOMS OF LIMITED CARE FACILITIES AND NURSING HOMES AS DEFINED IN NFPA 101.
  - 8.15.8.1.3 - SPRINKLERS SHALL BE REQUIRED IN BATHROOMS OPENING DIRECTLY ONTO PUBLIC CORRIDORS OR EXITWAYS.
- CLOSETS AND PANTRIES:**
- 8.15.8.2 - SPRINKLERS ARE NOT REQUIRED IN CLOTHES CLOSETS, LINEN CLOSETS, AND PANTRIES WITHIN DWELLING UNITS IN HOTELS AND MOTELS WHERE THE AREA OF THE SPACE DOES NOT EXCEED 24 SQUARE FEET AND THE WALLS AND CEILINGS ARE SURFACED WITH NONCOMBUSTIBLE OR LIMITED-COMBUSTIBLE MATERIALS.



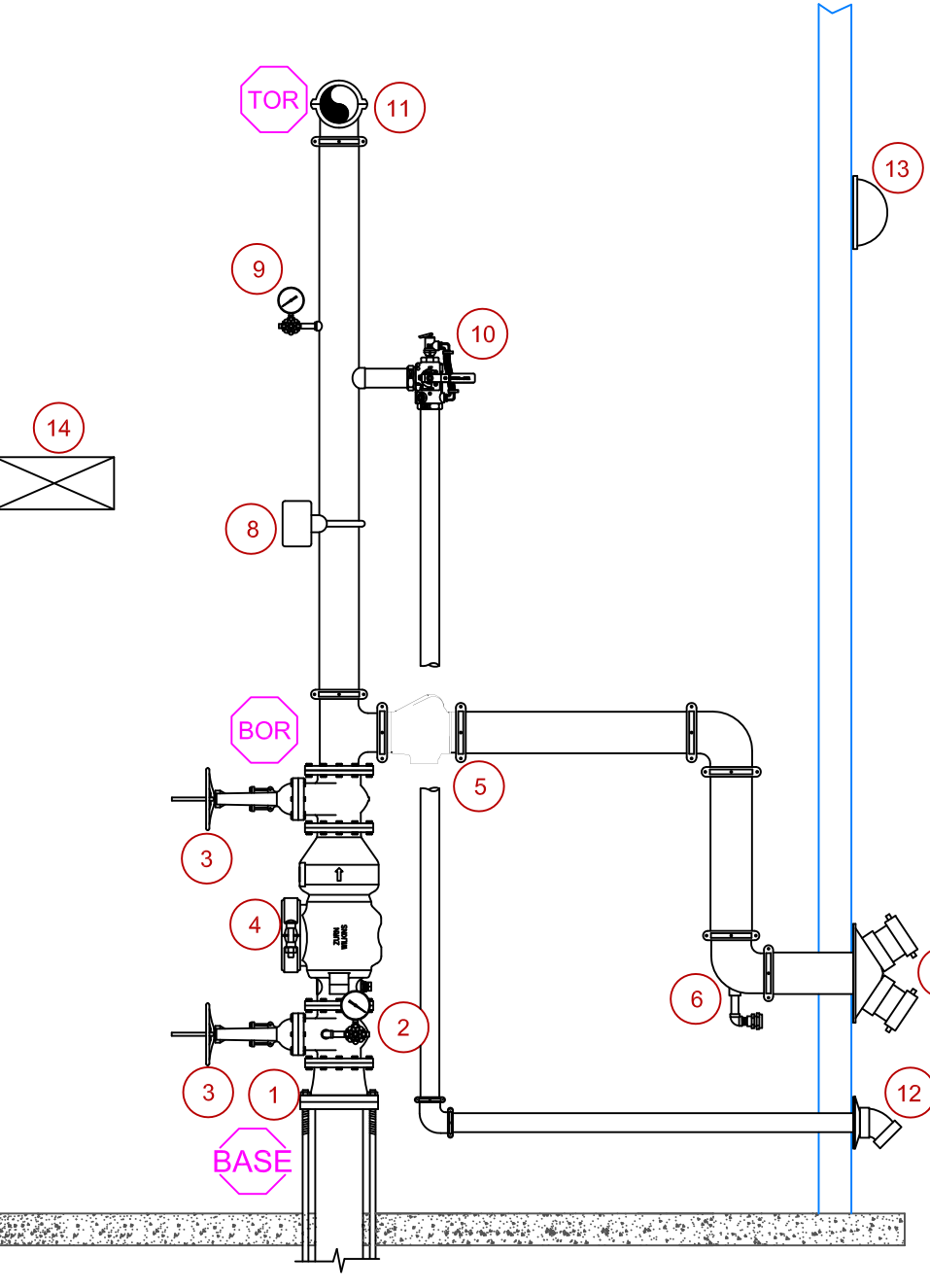
**RING HANGER DETAIL**  
SCALE: N.T.S.



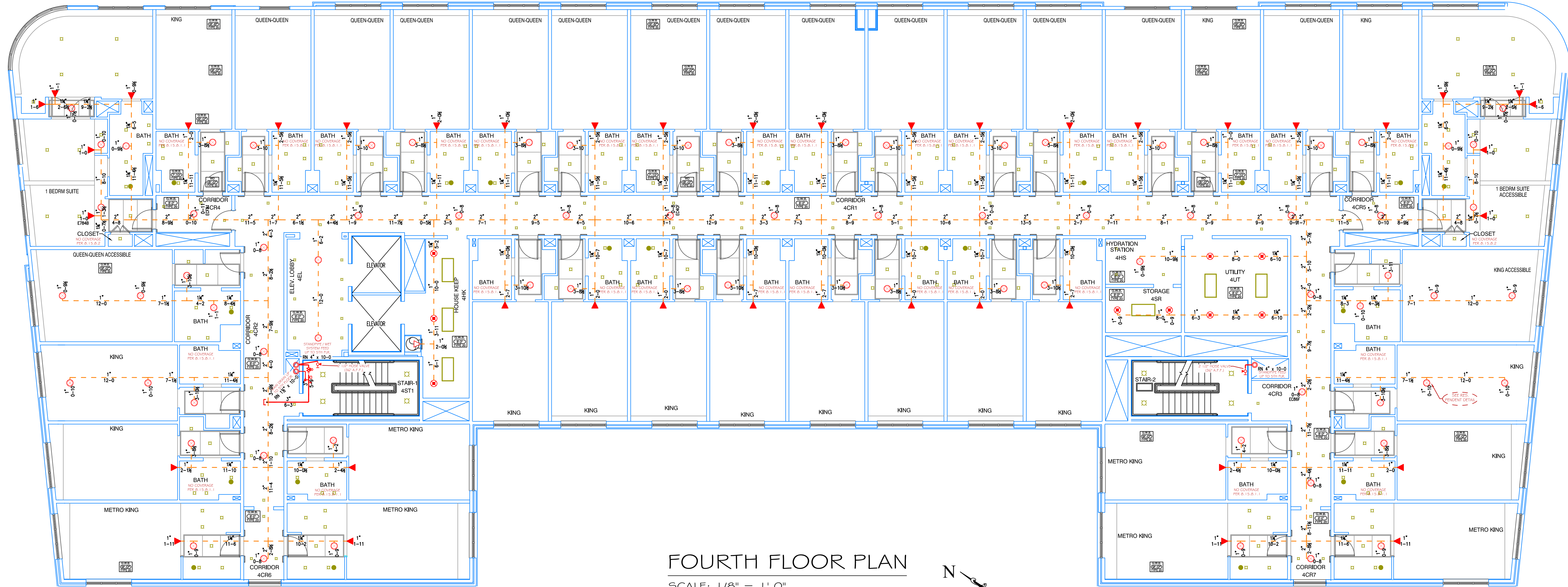
**RESIDENTIAL PENDENT DETAIL**  
SCALE: N.T.S.



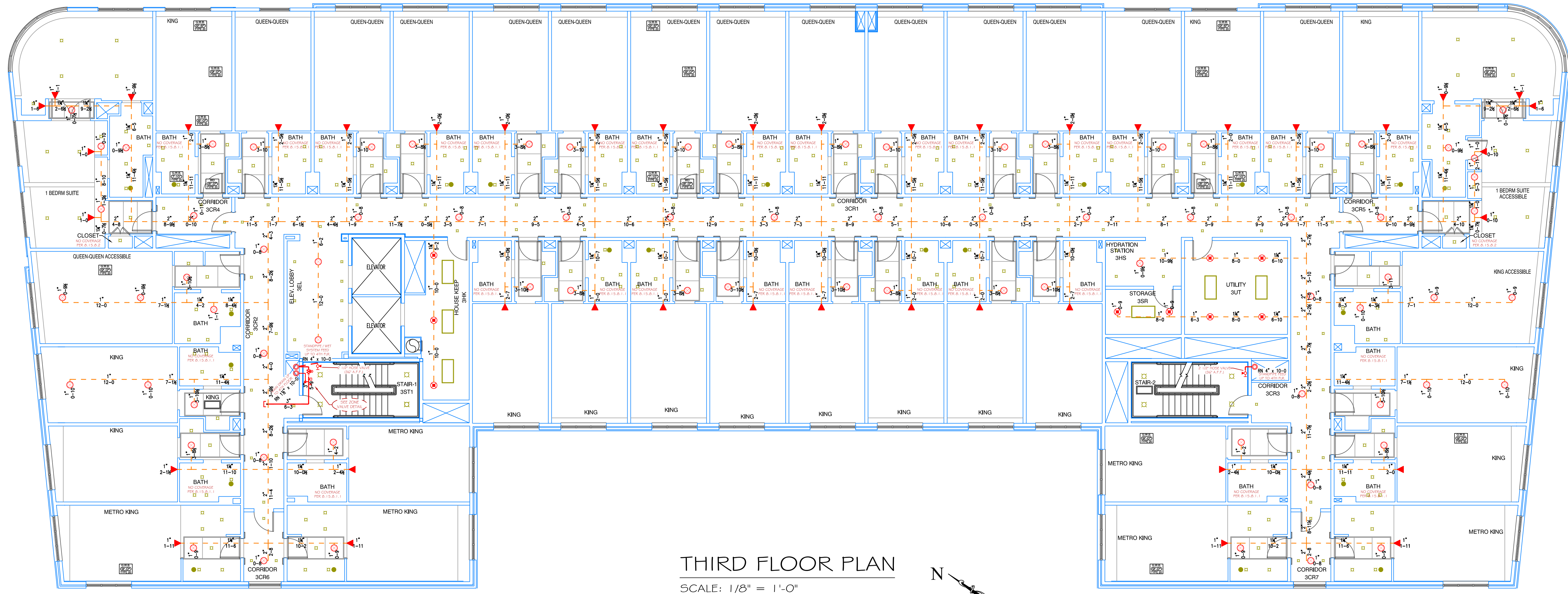
**SYSTEM RISER DETAIL LEGEND**



**SYSTEM RISER DETAIL**  
SCALE: N.T.S.



**FOURTH FLOOR PLAN**  
SCALE: 1/8" = 1'-0"  
PROTECTED AREA: 17,820 SQ. FT.



**THIRD FLOOR PLAN**  
SCALE: 1/8" = 1'-0"  
PROTECTED AREA: 17,820 SQ. FT.