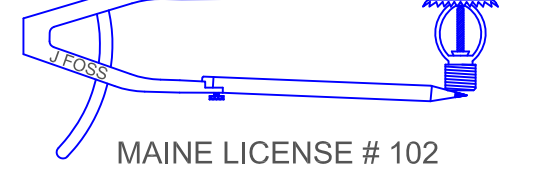


HIGH TECH FIRE PROTECTION

P.O. BOX 156
MINOT, ME. 04258-0258
TEL (207) 988-2551 FAX (207) 988-4187



MAINE LICENSE # 102

ARCHITECT:
OPECHEE CONSTRUCTION BELMONT, NH

CONTRACTOR:
OPECHEE CONSTRUCTION BELMONT, NH

- LEGEND:
- Rm PIPE RISER UP
 - Dm PIPE RISER DOWN
 - STEEL PIPE (WET)
 - CPVC PIPE (WET)
 - ▲ WET SYSTEM RISER
 - HYDRAULIC CALC. POINT
 - PIPE ELEVATION A.F.F.

DESIGN NOTES:

*ALL PIPING 1/2" AND LARGER TO BE SCHEDULE 10 STEEL W/ GROOVED FITTING OR CPVC.

*ALL PIPING 1/4" AND SMALLER TO BE SCHEDULE 40 STEEL WITH THREADED OR GROOVED FITTING OR CPVC.

*POSITION, LOCATION, SPACING, AND USE OF SPRINKLERS AND HANGERS SHALL BE IN ACCORDANCE WITH NFPA 13 2016 ed.

*HYDRAULIC CALCULATION PROCEDURES HAVE BEEN DONE IN ACCORDANCE WITH NFPA 13 2016 ed. (SEE PLANS FOR LOCATION OF REMOTE AREAS, HYDRAULIC REFERENCE POINTS, AND SYSTEM DEMANDS)

*ALL ELECTRICAL WORK TO BE DONE BY OTHERS.

*DIMENSIONS AND LOCATIONS GIVEN FOR SPRINKLER HEADS AND PIPE MAY VARY TO ACCOMMODATE ACTUAL FIELD CONDITIONS.

*OWNER TO PROVIDE SUFFICIENT HEAT TO PREVENT FREEZING IN WATER FILLED SPRINKLER PIPE AND EQUIPMENT.

*OTHER TRADES TO COORDINATE THEIR WORK WITH SPRINKLER CONTRACTOR.

*ALL NEWLY INSTALLED SPRINKLER HEADS ARE TO BE QUICK RESPONSE UL/NO.

*OWNER IS RESPONSIBLE FOR MAINTAINING THE SPRINKLER SYSTEMS IN ACCORDANCE WITH THE CURRENT EDITION OF NFPA 25.

*INSPECTIONS TESTING AND MAINTENANCE OF WATER BASED FIRE PROTECTION SYSTEMS AND/OR ALL APPLICABLE FEDERAL, STATE, AND LOCAL LAWS, CODES AND ORDINANCES.

HEAD LEGEND:

- RELIABLE* MODEL F1 RES 58 CCP
3 / 155°
K=5.6
- 1/2" CONCEALED RESIDENTIAL WHITE PENDENT (16' x 16' SPACING)
- RELIABLE* MODEL F1 RES 58
28 / 155°
K=5.8
- 1/2" RESIDENTIAL WHITE SEMI-RECESSED SIDEWALL (16' x 20' SPACING)
- RELIABLE* MODEL G5-56
137 / 155°
K=5.6
- 1/2" CONCEALED WHITE PENDENT (225 SQ. FT. SPACING - LIGHT) (130 SQ. FT. SPACING - ORD.)
- RELIABLE* MODEL F1FR 56
69 / 155°
K=5.6
- 1/2" SEMI-RECESSED WHITE PENDENT (225 SQ. FT. SPACING - LIGHT) (130 SQ. FT. SPACING - ORD.)
- RELIABLE* MODEL F1FR 56
4 / 200°
K=5.6
- 1/2" BRASS HORIZONTAL SIDEWALL (100 SQ. FT. SPACING - ORD.)

* OR APPROVED EQUAL
TOTAL HEADS ON SHEET: 276
SCALE: 1/8"=1'-0"

DATE: APRIL 14, 2017
DESIGNER: JEREMY A. FOSS
MAINE RMS #808
NICET LEVEL III CERT. #126801
CHECKED BY: E. POULIN (RMS# 515)
NICET LEVEL IV CERT. # 108534

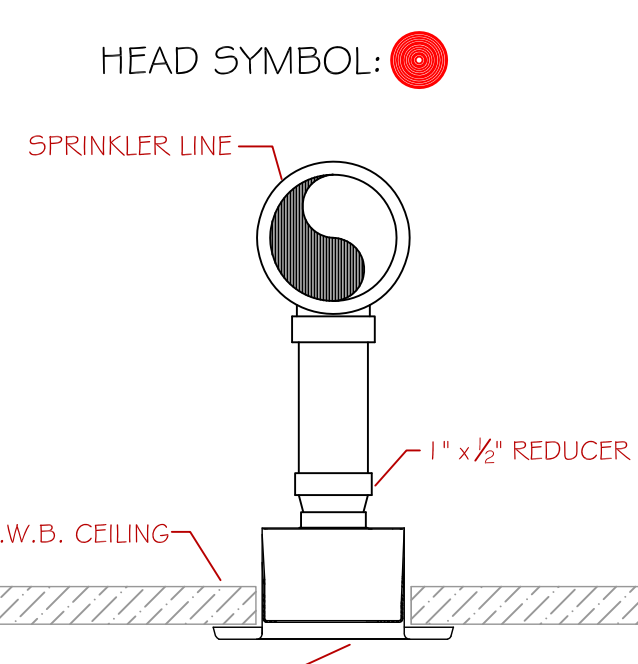
LOCATION:
FORE, HANCOCK AND THAMES STREETS
PORTLAND, ME

DRAWING TITLE:
AC HOTEL (FIRST & SECOND FLR.)
FIRE PROTECTION PLAN (NFPA 13 2016 ed.)

DRAWING NO.:
FP-1.1

COMMERCIAL CALC STICKER
HYD. DESIGN CRITERIA
(NFPA 13 2016 ed. - WET)

LOCATION: BAR / LOUNGE AREA (SECOND FLOOR)
HAZARD CLASSIFICATION: LIGHT
DENSITY: 1 GPM/SQ. FT.
AREA OF OPERATION: 1,500 SQ. FT.
HOSE DEMAND: 100 GPM
NO. OF SPRINKLERS: 11
SYSTEM DEMAND (INCLUDING HOSE) @ BASE OF RISER: 371 GPM @ 98 PSI
SAFETY MARGINS: 12.4PSI



CONCEALED HEAD DETAIL
SCALE: N.T.S.

NOTES FOR SPRINKLER COVERAGE WITHIN DWELLING UNITS

- BATHROOMS:
- 8.15.8.1.1 - UNLESS SPRINKLERS ARE REQUIRED BY 8.15.8.1.2 OR 8.15.8.1.3, SPRINKLERS SHALL NOT BE REQUIRED IN BATHROOMS THAT ARE LOCATED WITHIN DWELLING UNITS, THAT DO NOT EXCEED 55 SQUARE FEET IN AREA, AND THAT HAVE WALLS AND CEILINGS OF NONCOMBUSTIBLE OR LIMITED-COMBUSTIBLE MATERIALS WITH A 15-MINUTE THERMAL BARRIER RATING, INCLUDING THE WALLS AND CEILING BEHIND ANY SHOWER ENCLOSURE OR TUB.
- 8.15.8.1.2 - SPRINKLERS SHALL BE REQUIRED IN BATHROOMS OF LIMITED CARE FACILITIES AND NURSING HOMES AS DEFINED IN NFPA 101.
- 8.15.8.1.3 - SPRINKLERS SHALL BE REQUIRED IN BATHROOMS OPENING DIRECTLY ONTO PUBLIC CORRIDORS OR EXITWAYS.
- CLOSETS AND PANTRIES:
- 8.15.8.2 - SPRINKLERS ARE NOT REQUIRED IN CLOTHES CLOSETS, LINEN CLOSETS, AND PANTRIES WITHIN DWELLING UNITS IN HOTELS AND MOTELS WHERE THE AREA OF THE SPACE DOES NOT EXCEED 24 SQUARE FEET AND THE WALLS AND CEILINGS ARE SURFACED WITH NONCOMBUSTIBLE OR LIMITED-COMBUSTIBLE MATERIALS.

FOR TFP-400, TFP-500 & FS-5

CURE TIMES WITH ONE STEP SOLVENT CEMENT
200 PSI (MAXIMUM) TEST PRESSURE

PIPE SIZE (INCHES)	80° TO 120°	40° TO 59°	0° TO 39°
3/4"	45 MIN.	1.5 HR.	24 HR.
1"	45 MIN.	1.5 HR.	24 HR.
1-1/4"	1.5 HR.	16 HR.	120 HR.
1-1/2"	1.5 HR.	16 HR.	120 HR.
2"	6 HR.	36 HR.	SEE NOTE 1
2-1/2"	8 HR.	72 HR.	SEE NOTE 1
3"	8 HR.	72 HR.	SEE NOTE 1

NOTE 1: FOR THESE SIZES, THE SOLVENT CEMENT CAN BE APPLIED AT TEMPERATURES BELOW 32°F. HOWEVER, THE SPRINKLER SYSTEM TEMPERATURE MUST BE RAISED TO A TEMPERATURE OF 32°F OR ABOVE AND ALLOWED TO CURE PER THE ABOVE RECOMMENDATIONS PRIOR TO PRESSURE TESTING.

CPVC CURING TIMES

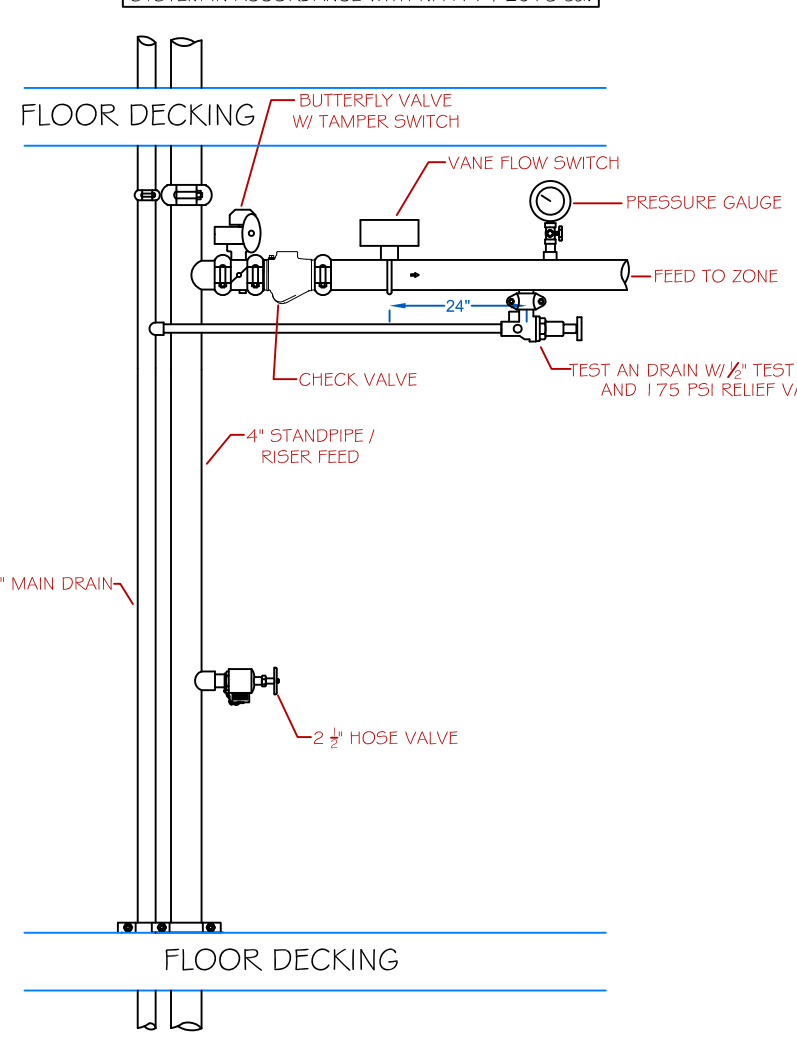
CPVC MAXIMUM SUPPORT SPACING (FT.)

PIPE SIZE	NOMINAL PIPE SIZE	2'	2-1/2'	3'
1/2"	1/2"	1-1/2'	1-3/4'	2'
3/4"	3/4"	1-1/2'	1-3/4'	2'
1"	1"	1-1/2'	1-3/4'	2'
1-1/2"	1-1/2"	1-1/2'	1-3/4'	2'
2"	2"	1-1/2'	1-3/4'	2'
2-1/2"	2-1/2"	1-1/2'	1-3/4'	2'
3"	3"	1-1/2'	1-3/4'	2'

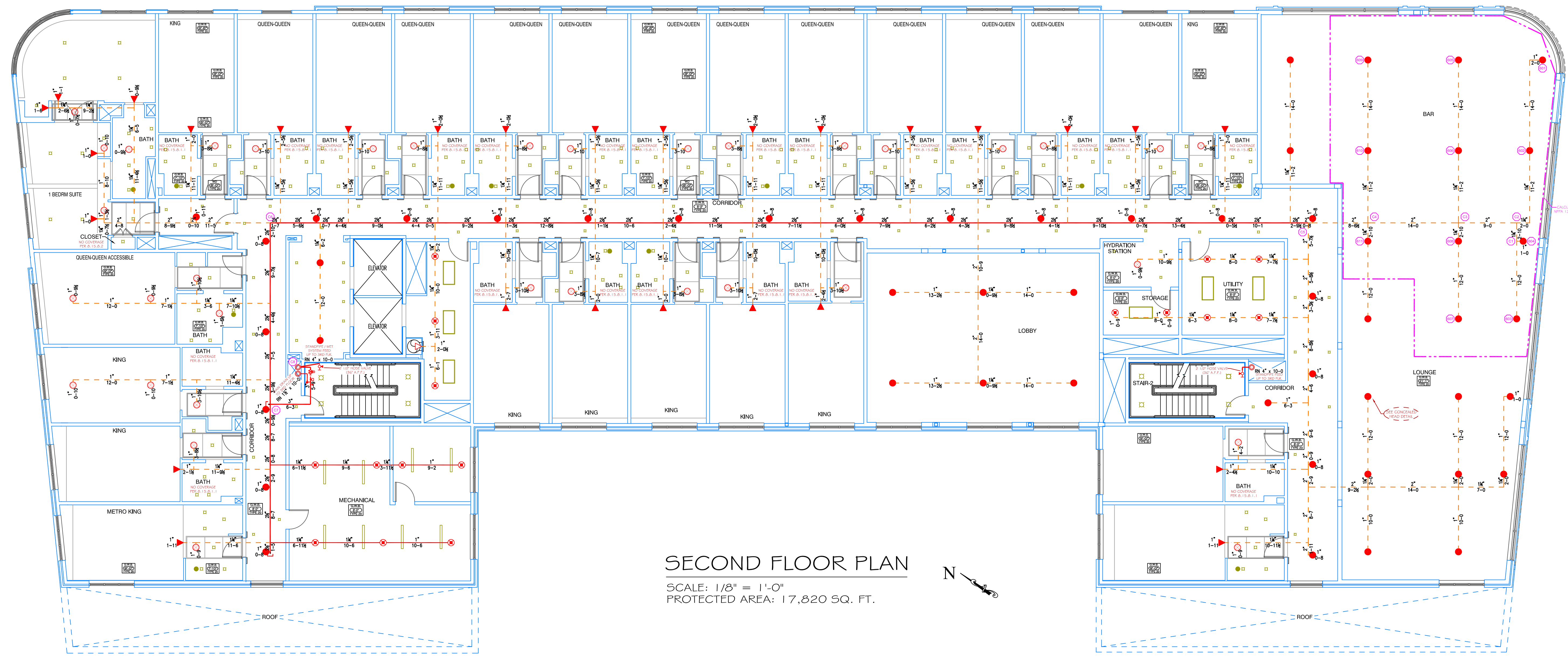
CPVC HANGING NOTES

SCALE: N.T.S.

NOTE: THE STANDPIPE SYSTEM HAS BEEN DESIGNED AS A CLASS I MANUAL WET STANDPIPE SYSTEM IN ACCORDANCE WITH NFPA 14 2016 ed.

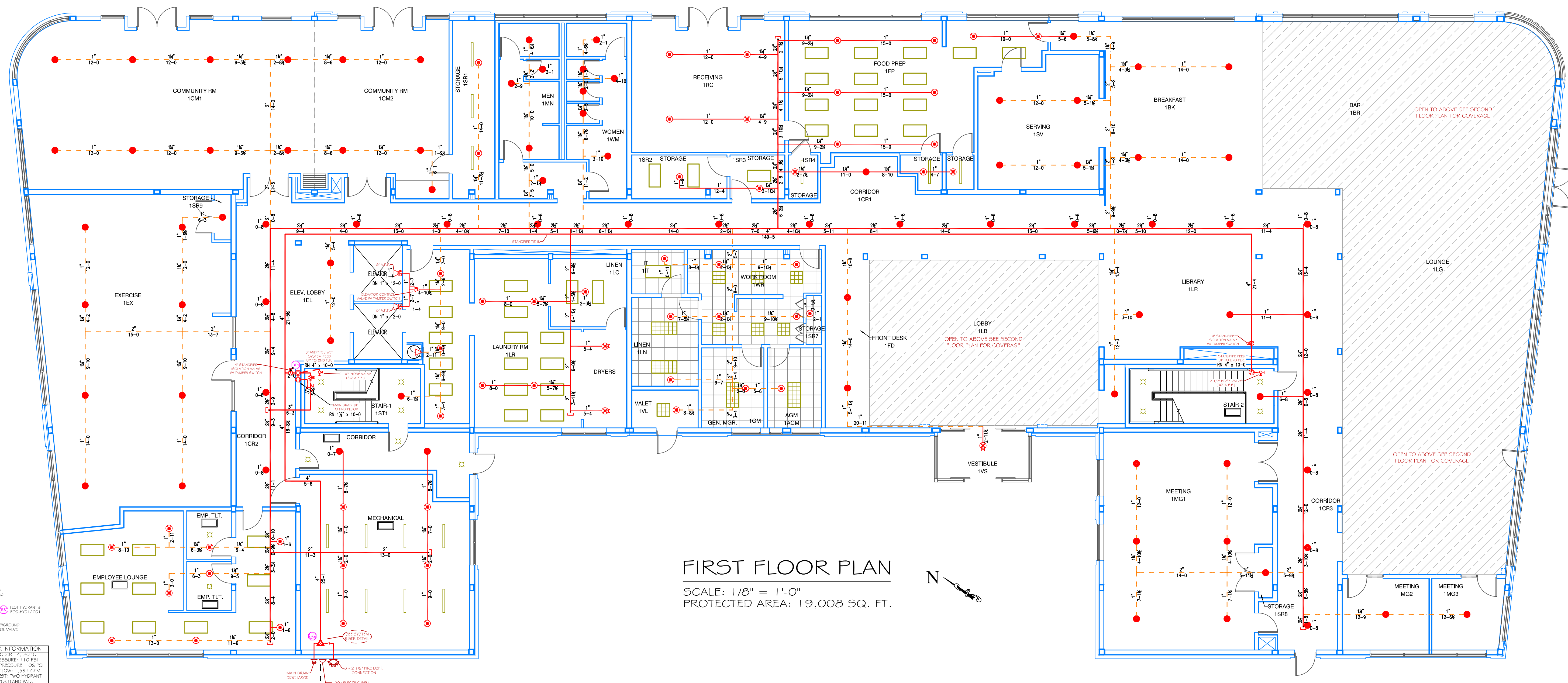


ZONE VALVE DETAIL
SCALE: N.T.S.



SECOND FLOOR PLAN

SCALE: 1/8" = 1'-0"
PROTECTED AREA: 17,820 SQ. FT.



FIRST FLOOR PLAN

SCALE: 1/8" = 1'-0"
PROTECTED AREA: 19,008 SQ. FT.

WATER INFORMATION:
DATE: OCTOBER 14, 2016
DESIGNER: JEREMY A. FOSS
CHECKED BY: E. POULIN
SCALE: 1/8" = 1'-0"
PROTECTED AREA: 17,820 SQ. FT. (2ND FLR.)
PROTECTED AREA: 19,008 SQ. FT. (1ST FLR.)
TOTAL PROTECTED AREA: 36,828 SQ. FT.