

Prepared For:  
**EssexNorth 20**  
**Thames LLC**  
 P.O. Box 394  
 Topsfield, MA 01983

Consultant:  
**ARCHETYPE**  
 architects  
 48 Union Wharf Portland, Maine 04101  
 (207) 772-6022 Fax (207) 772-4056

Architect:  
**TWENTY THAMES**  
 CONDOMINIUM  
 20 Thames Street, Portland Maine

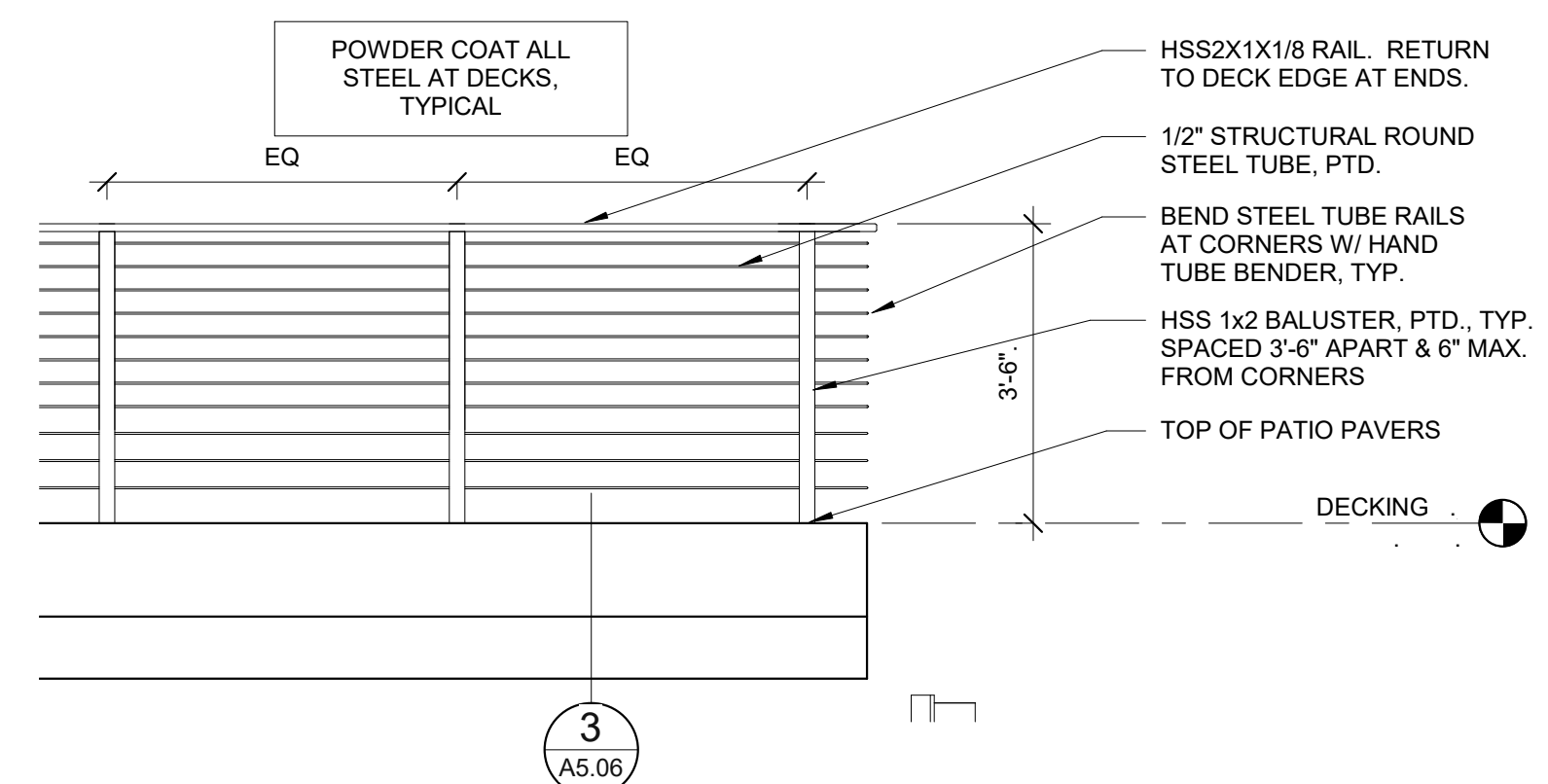
Project:  
 TWENTY THAMES  
 CONDOMINIUM  
 20 Thames Street, Portland Maine

Revisions:  
 10 2/16/18 SI-4

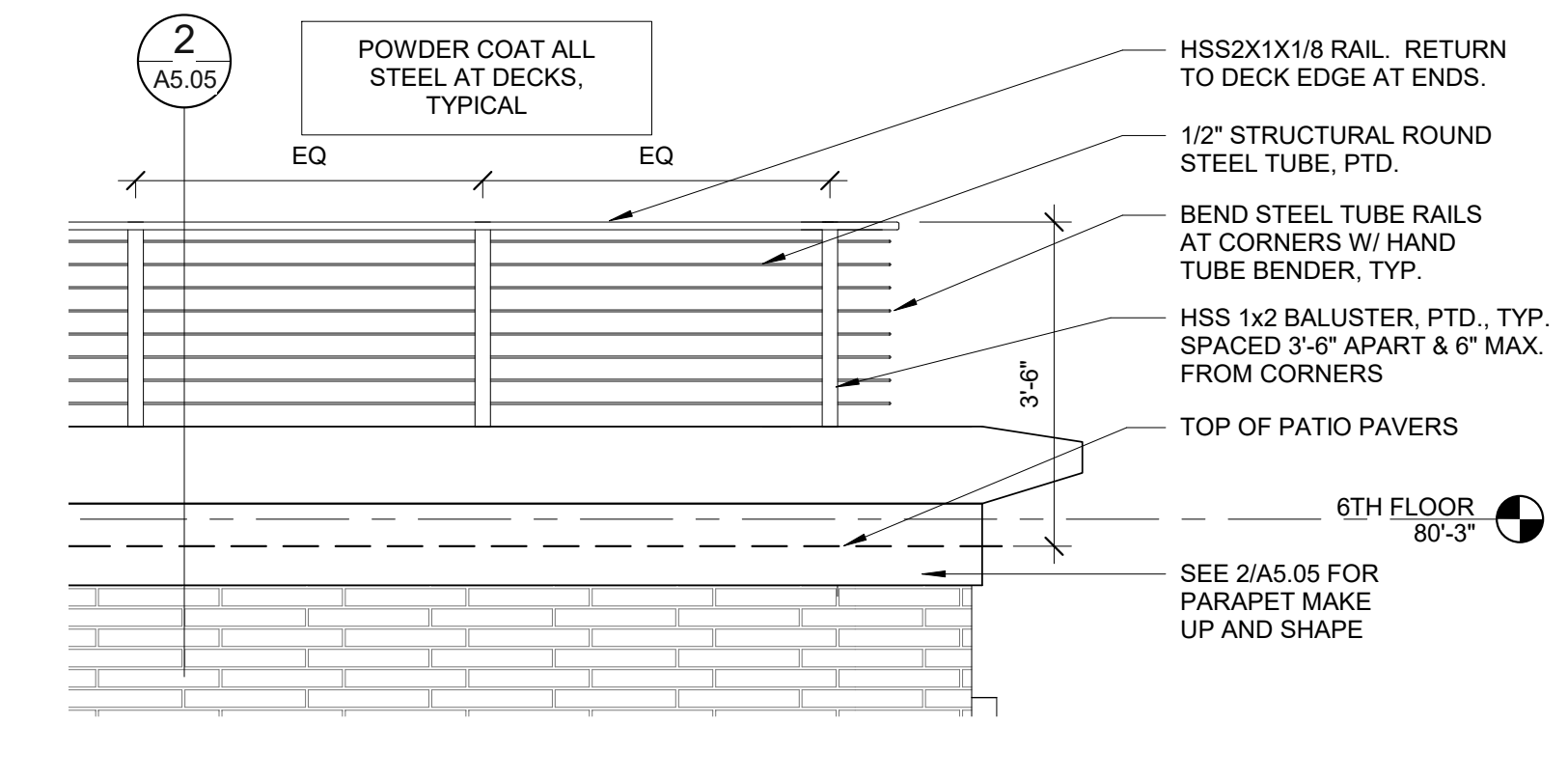
Date: FEB 16, 2018  
 Scale: As indicated

**A5.20**

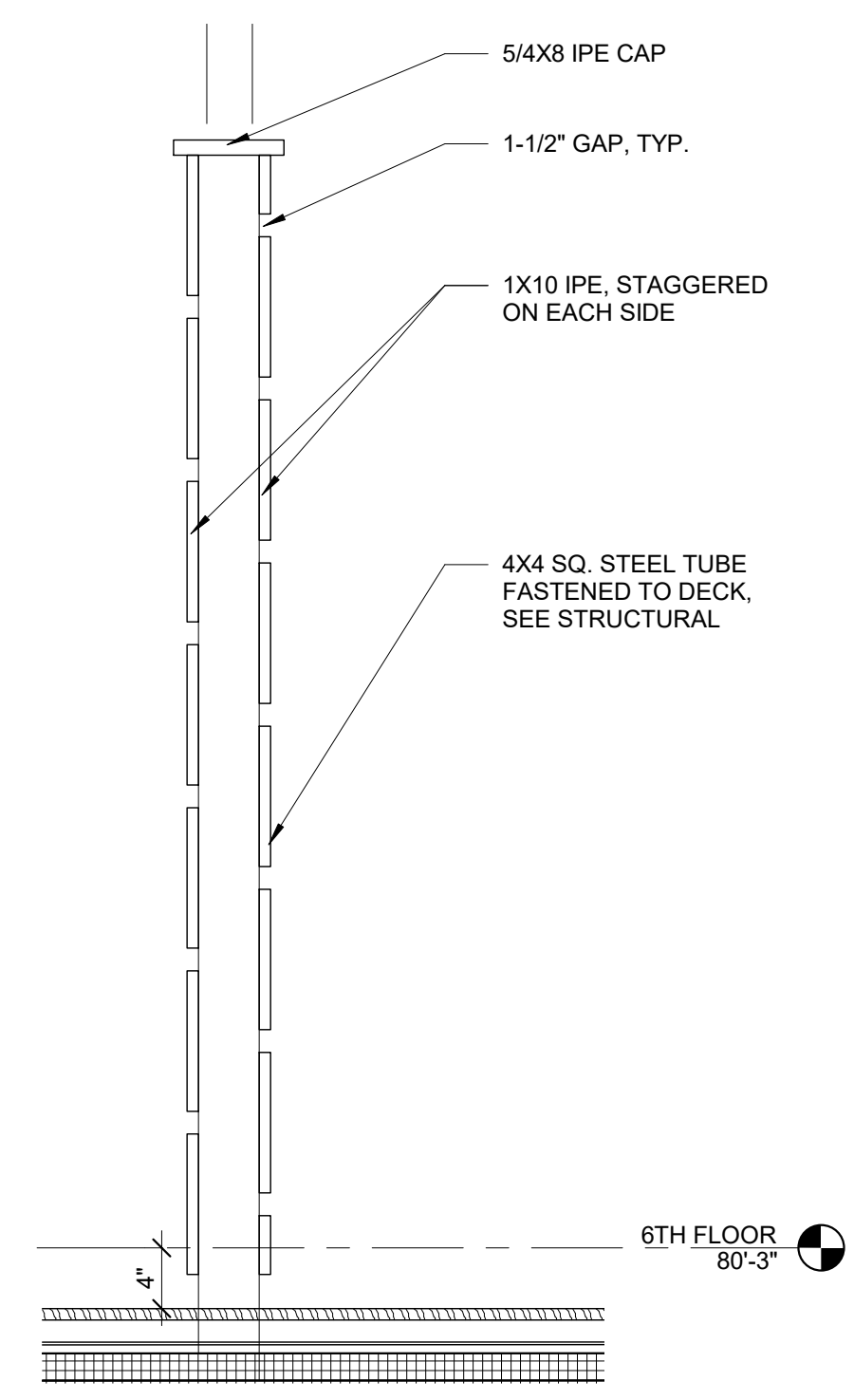
**DETAILS**



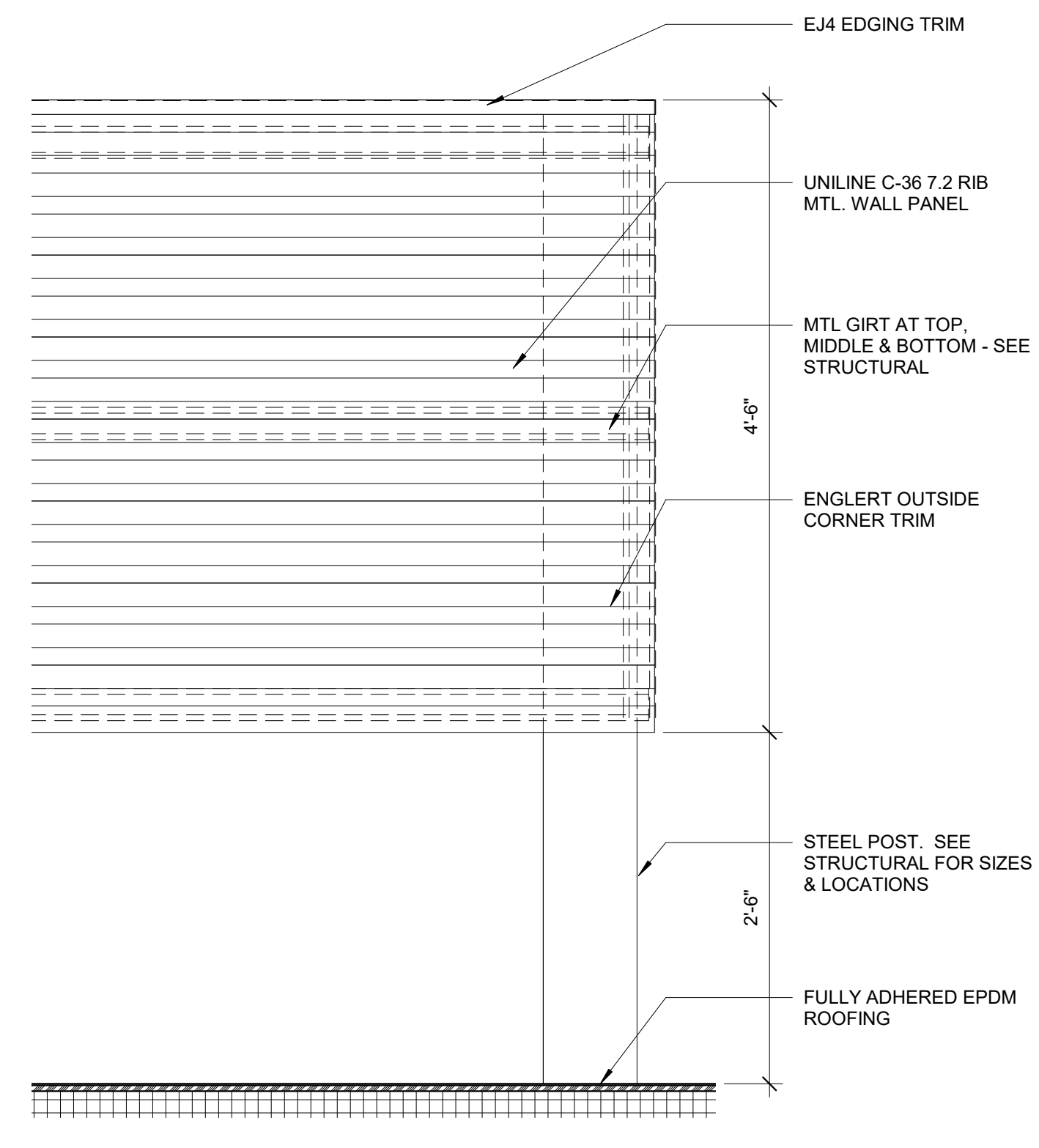
**7 | TYP. EXT. GUARDRAIL ELEVATION**  
 1/2" = 1'-0"



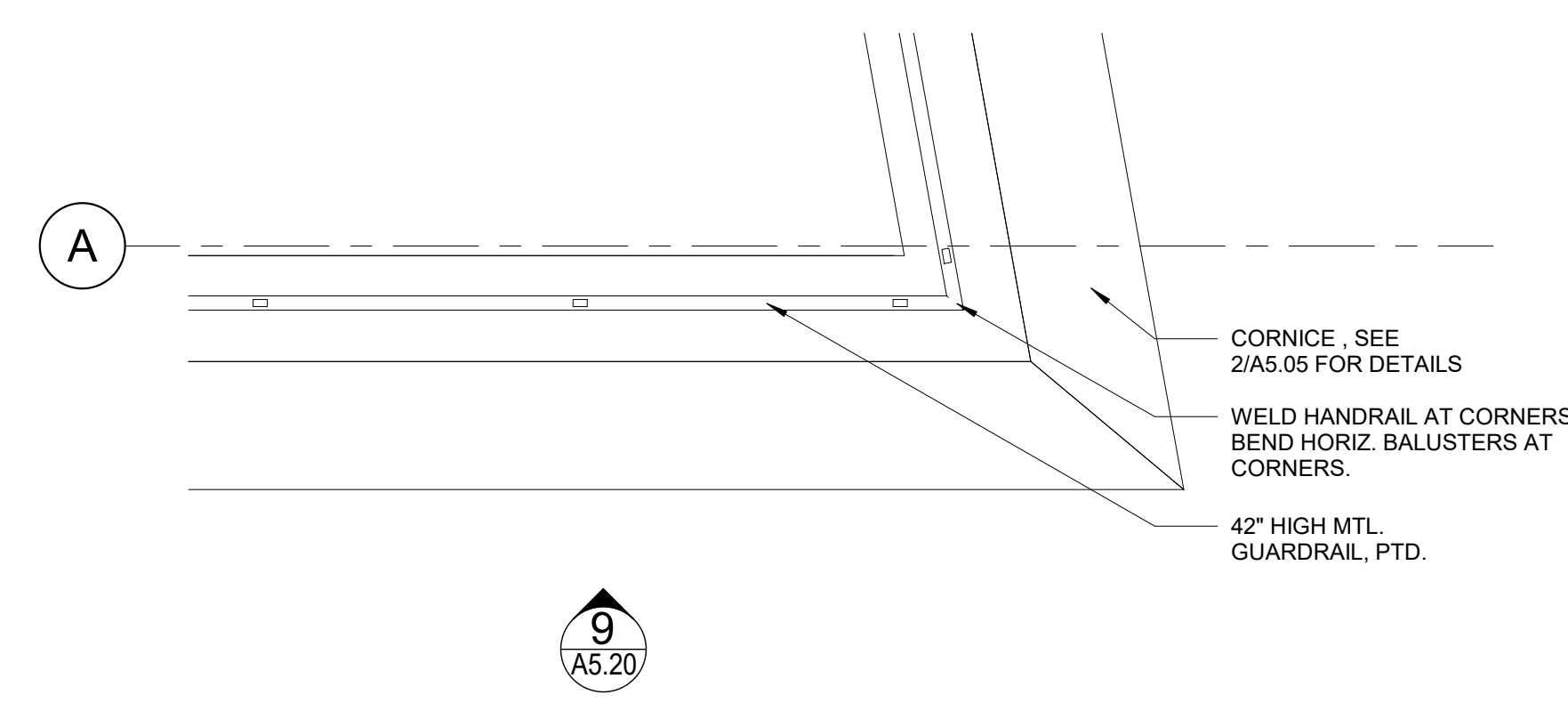
**9 | 6TH FL. GUARDRAIL ELEVATION**  
 1/2" = 1'-0"



**5 | IPE DECK SCREEN SECTION**  
 1" = 1'-0"

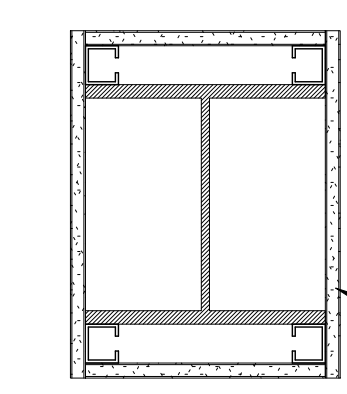


**3 | MECHANICAL SCREENING ELEVATION**  
 1" = 1'-0"



**2 | TYP. EXT. GUARDRAIL PLAN**  
 1/2" = 1'-0"

**1 HR NON-COMBUSTIBLE COLUMN PROTECTION SYSTEM**  
 DESIGN NUMBER - GA FILE NO. CM 1001

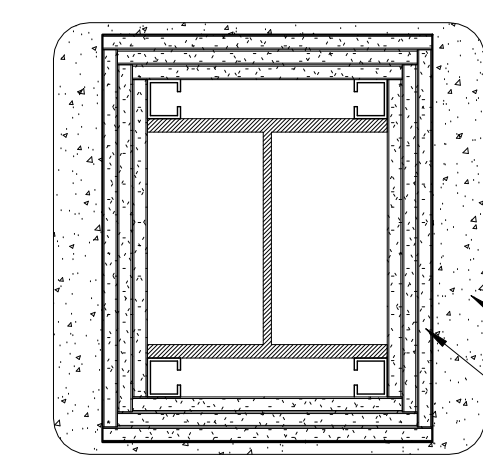


GENERAL NOTE: THE ENTIRE COLUMN SHALL BE PROVIDED INDIVIDUAL ENCASEMENT PROTECTION BY PROTECTING IT ON ALL SIDES FOR THE FULL COLUMN LENGTH, INCLUDING CONNECTIONS TO OTHER STRUCTURAL MEMBERS, WITH MATERIALS HAVING REQUIRED FIRE RESISTANCE RATING. WHERE THE COLUMN EXTENDS THROUGH A CEILING, THE ENCASEMENT PROTECTION SHALL BE CONTINUOUS FROM THE TOP OF THE FOUNDATION THROUGH THE CEILING SPACE TO THE TOP OF THE COLUMN

DETAIL TO BE USED ON ALL COLUMNS AND BRACING LEVELS 2 THROUGH 6

**6 | 1 HR RATED WIDE FLANGE COLUMN ENCLOSURE**  
 1 1/2" = 1'-0"

**3 HR NON-COMBUSTIBLE COLUMN PROTECTION SYSTEM**  
 DESIGN NUMBER - UL X510

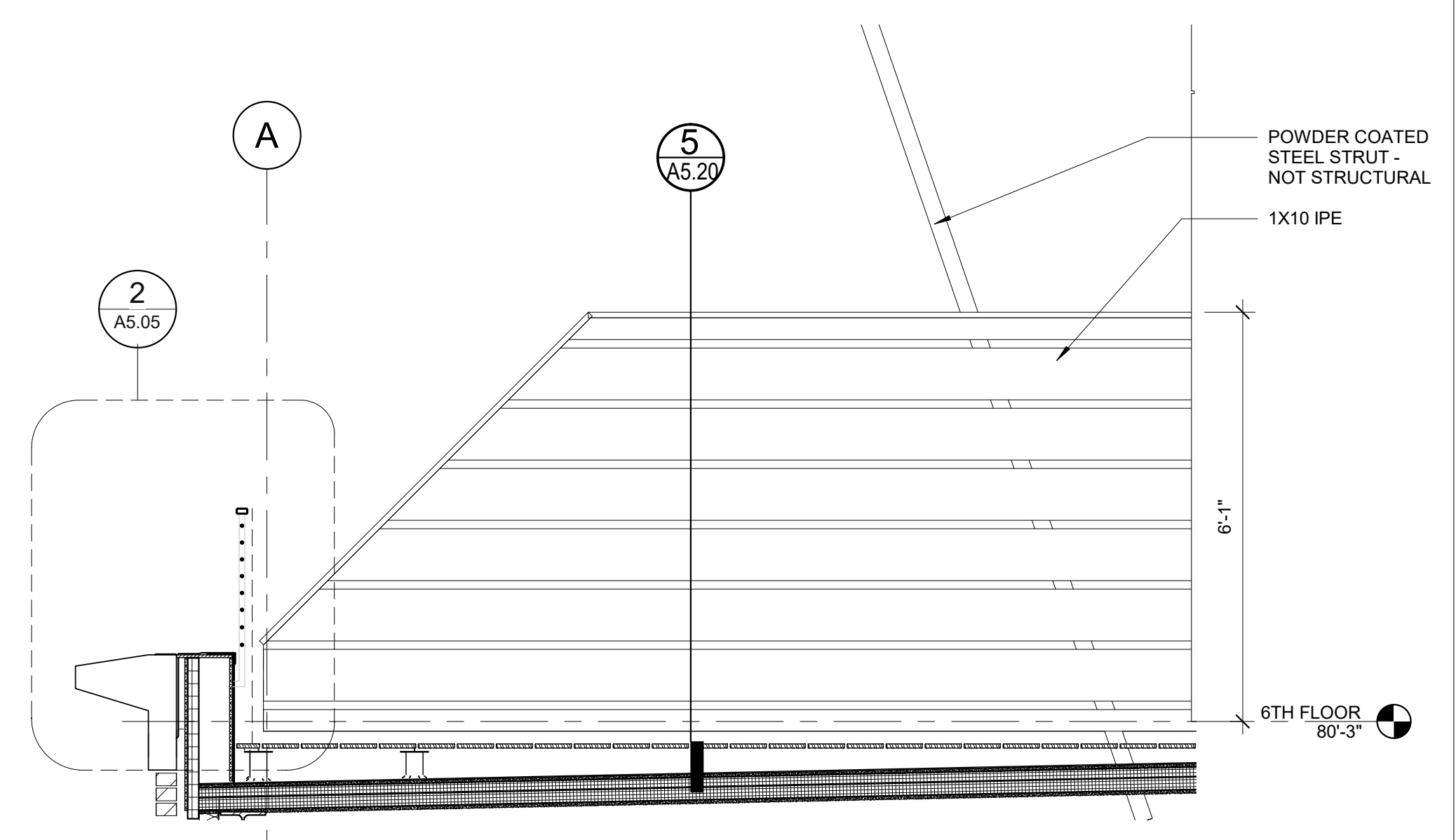


GENERAL NOTE: THE ENTIRE COLUMN SHALL BE PROVIDED INDIVIDUAL ENCASEMENT PROTECTION BY PROTECTING IT ON ALL SIDES FOR THE FULL COLUMN LENGTH, INCLUDING CONNECTIONS TO OTHER STRUCTURAL MEMBERS, WITH MATERIALS HAVING REQUIRED FIRE RESISTANCE RATING. WHERE THE COLUMN EXTENDS THROUGH A CEILING, THE ENCASEMENT PROTECTION SHALL BE CONTINUOUS FROM THE TOP OF THE FOUNDATION THROUGH THE CEILING SPACE TO THE TOP OF THE COLUMN

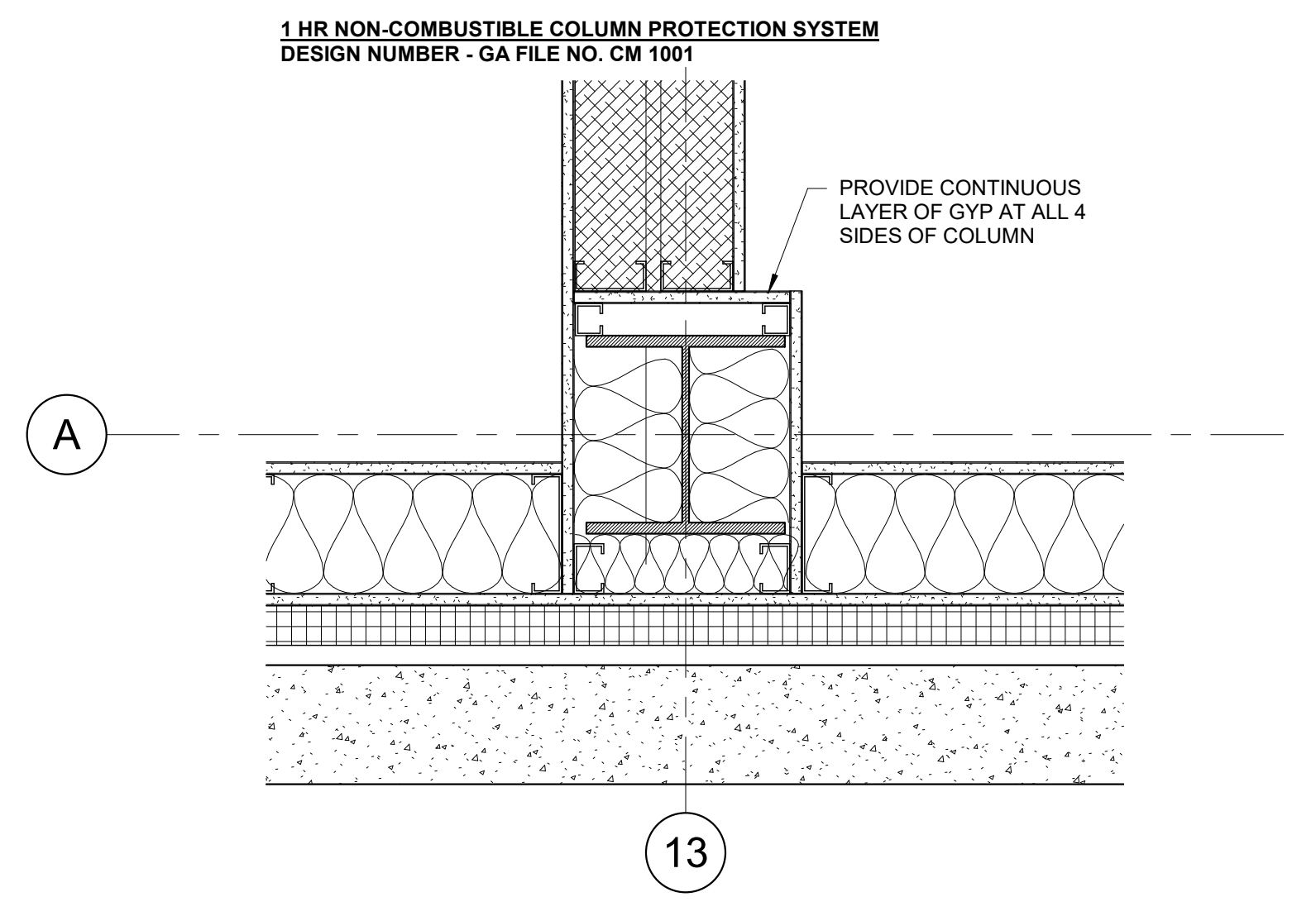
THREE LAYERS OF 5/8" GYPSUM FROM TOP OF CONCRETE TO UNDERSIDE OF DECK ABOVE

DETAIL TO BE USED ON ALL 1ST FLOOR COLUMNS AND 1ST FLOOR BRACING

**1 | 3HR RATED WIDE FLANGE COLUMN ENCLOSURE**  
 1 1/2" = 1'-0"



**4 | IPE DECK SCREEN ELEVATION**  
 1/2" = 1'-0"



**8 | COLUMN WRAP AT 2ND FLOOR EXT. WALL**  
 1 1/2" = 1'-0"