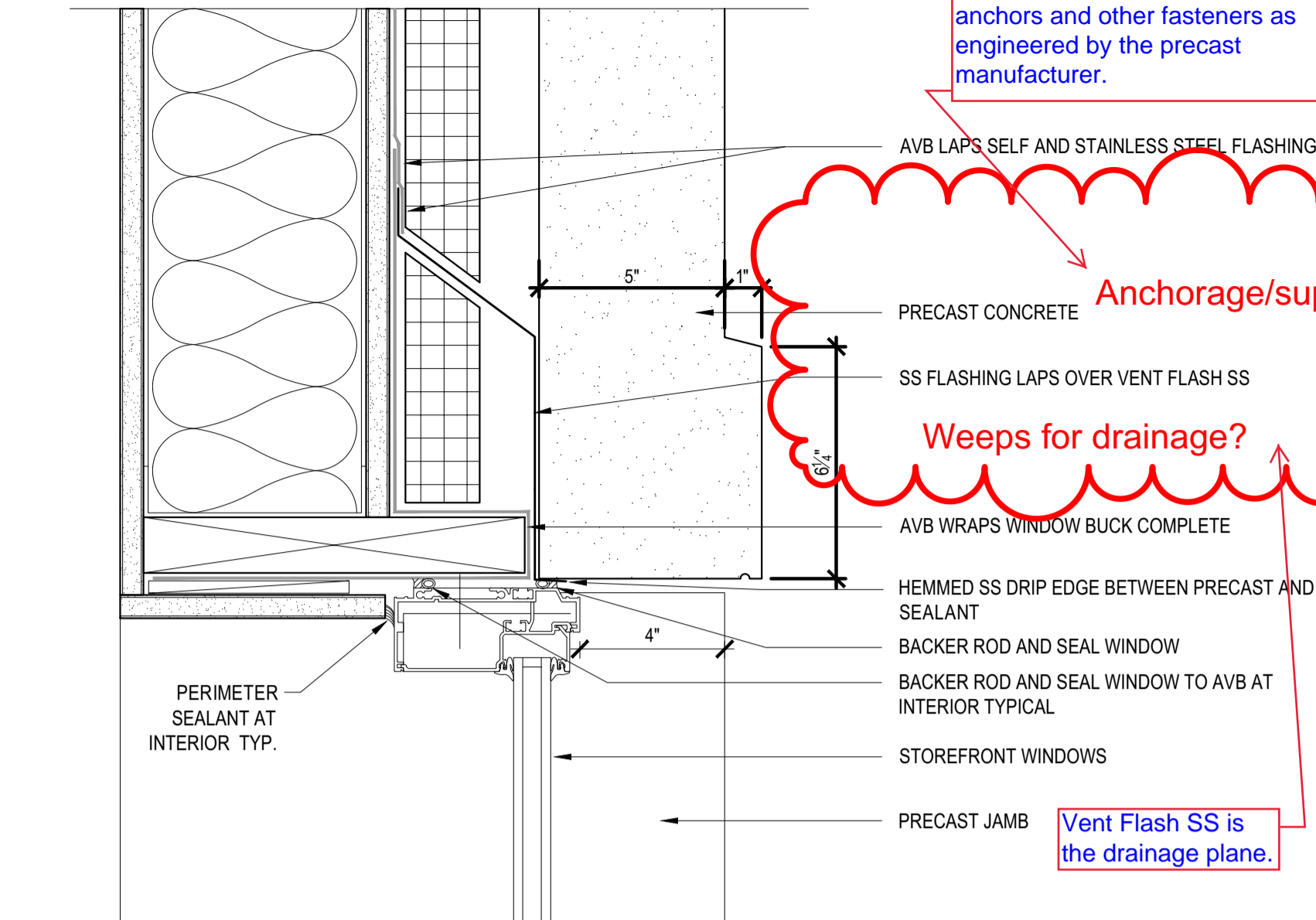
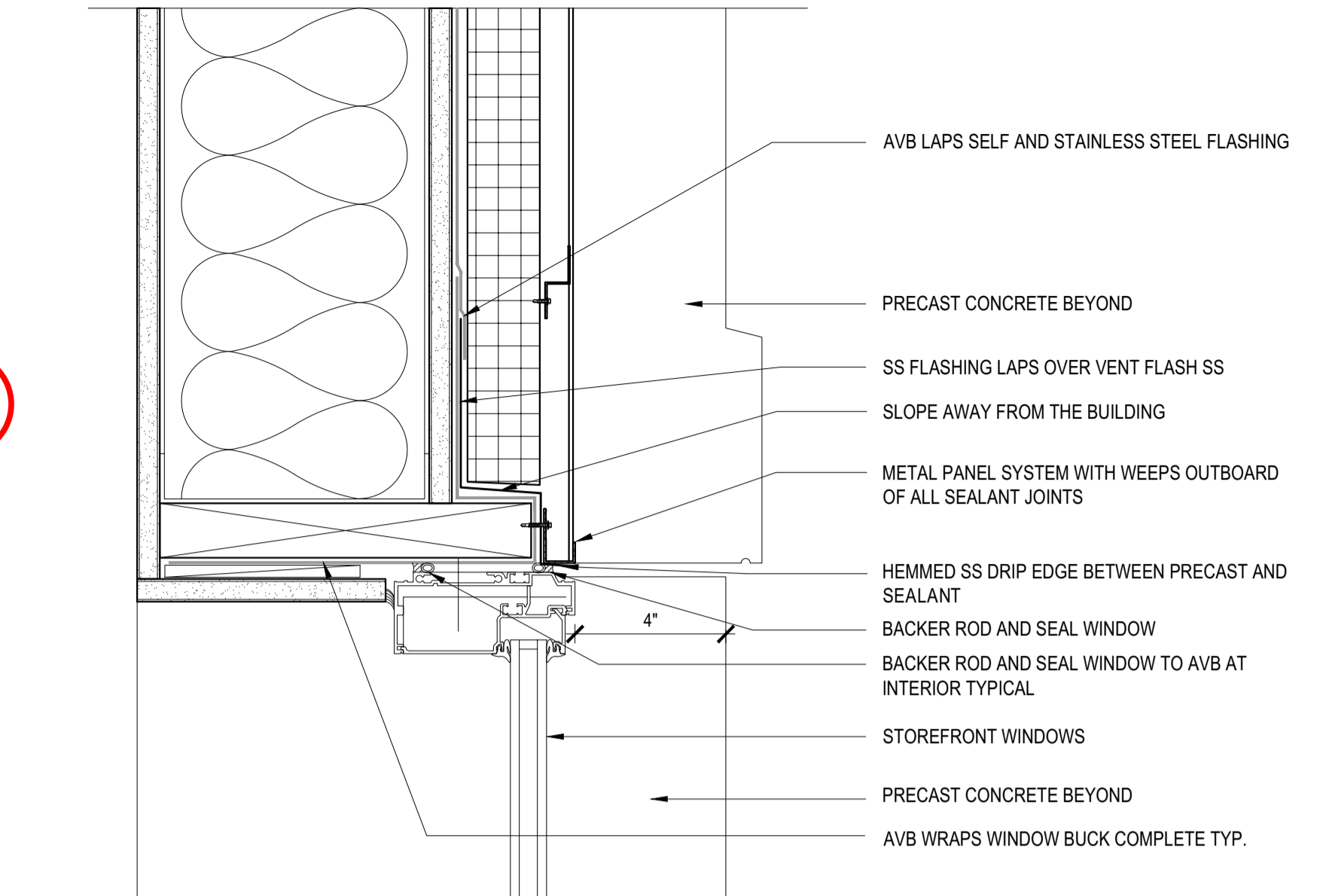


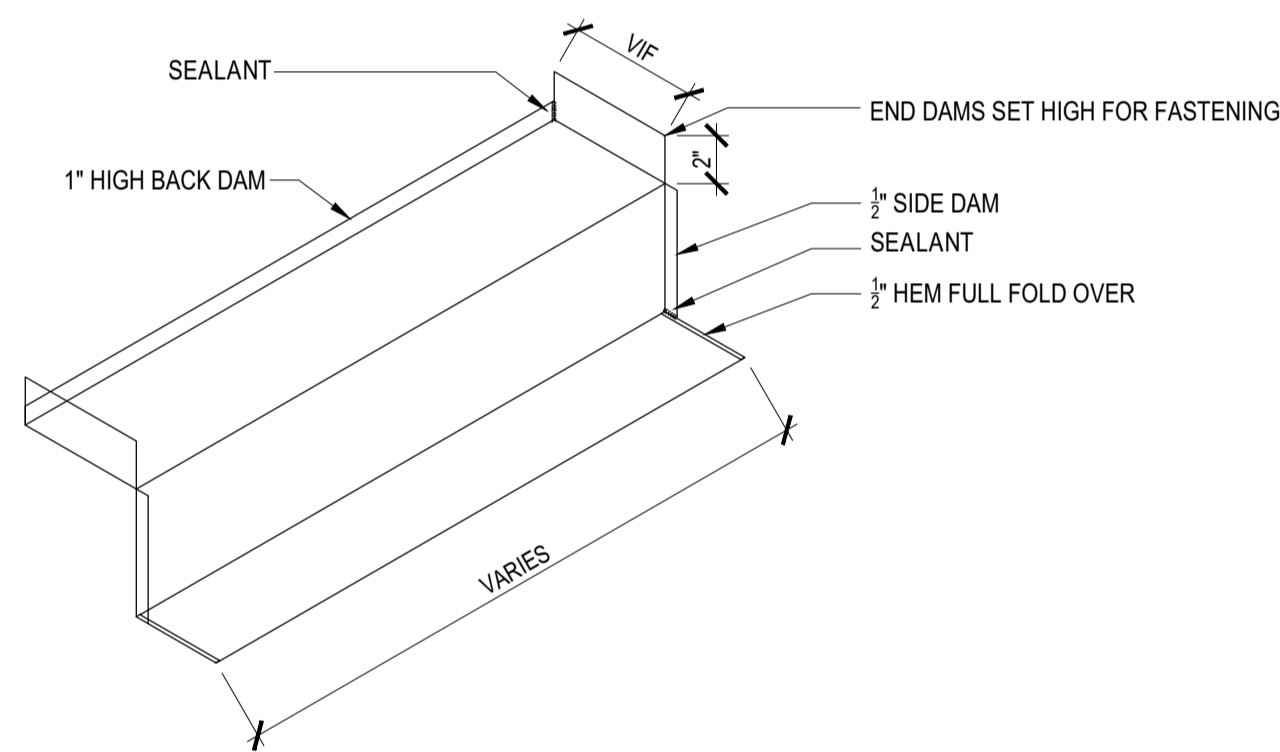
9 PRECAST MASONRY UNIT  
3" = 1'-0"



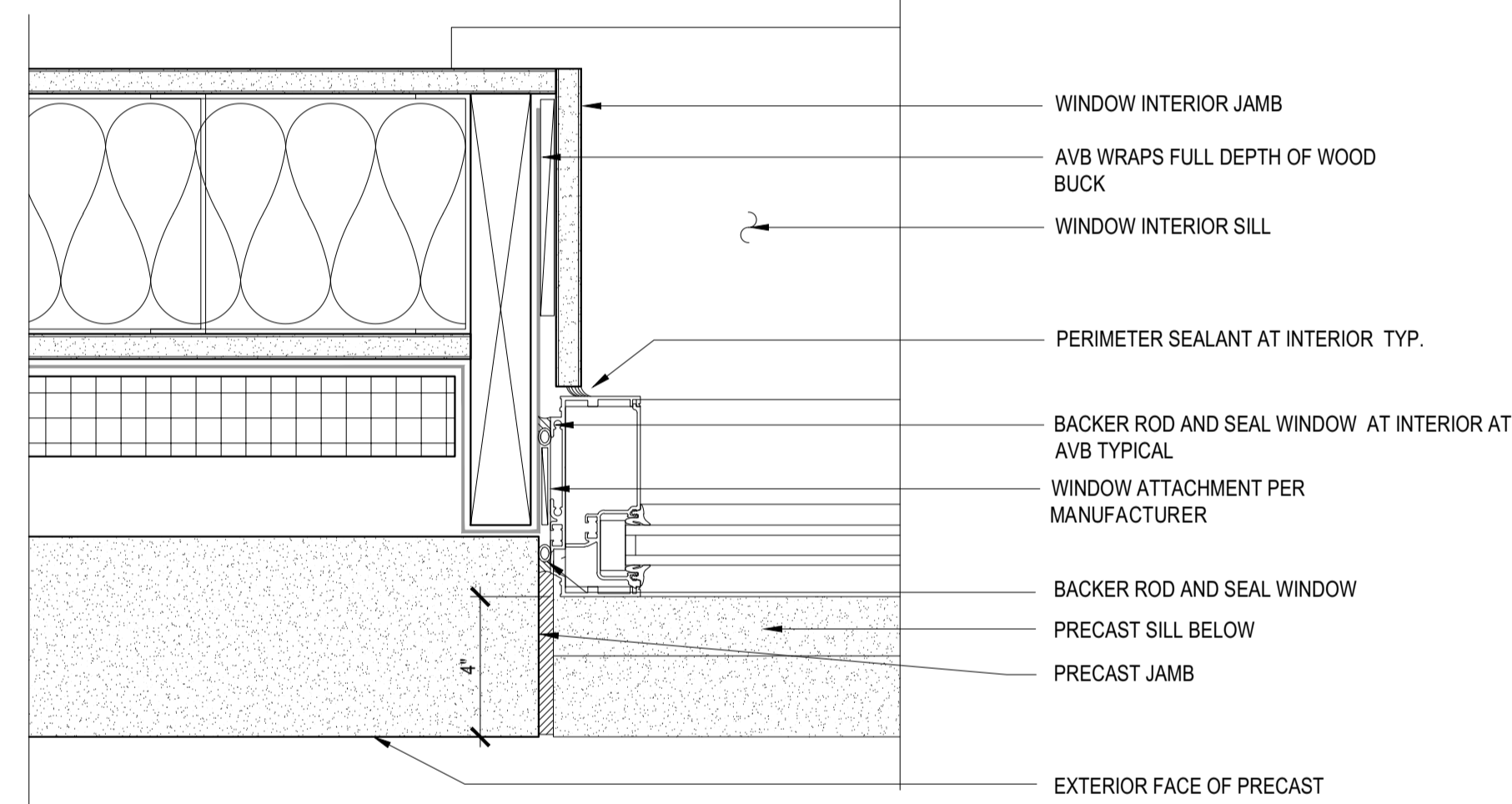
8 STOREFRONT HEAD AT PRECAST CONCRETE  
3" = 1'-0"



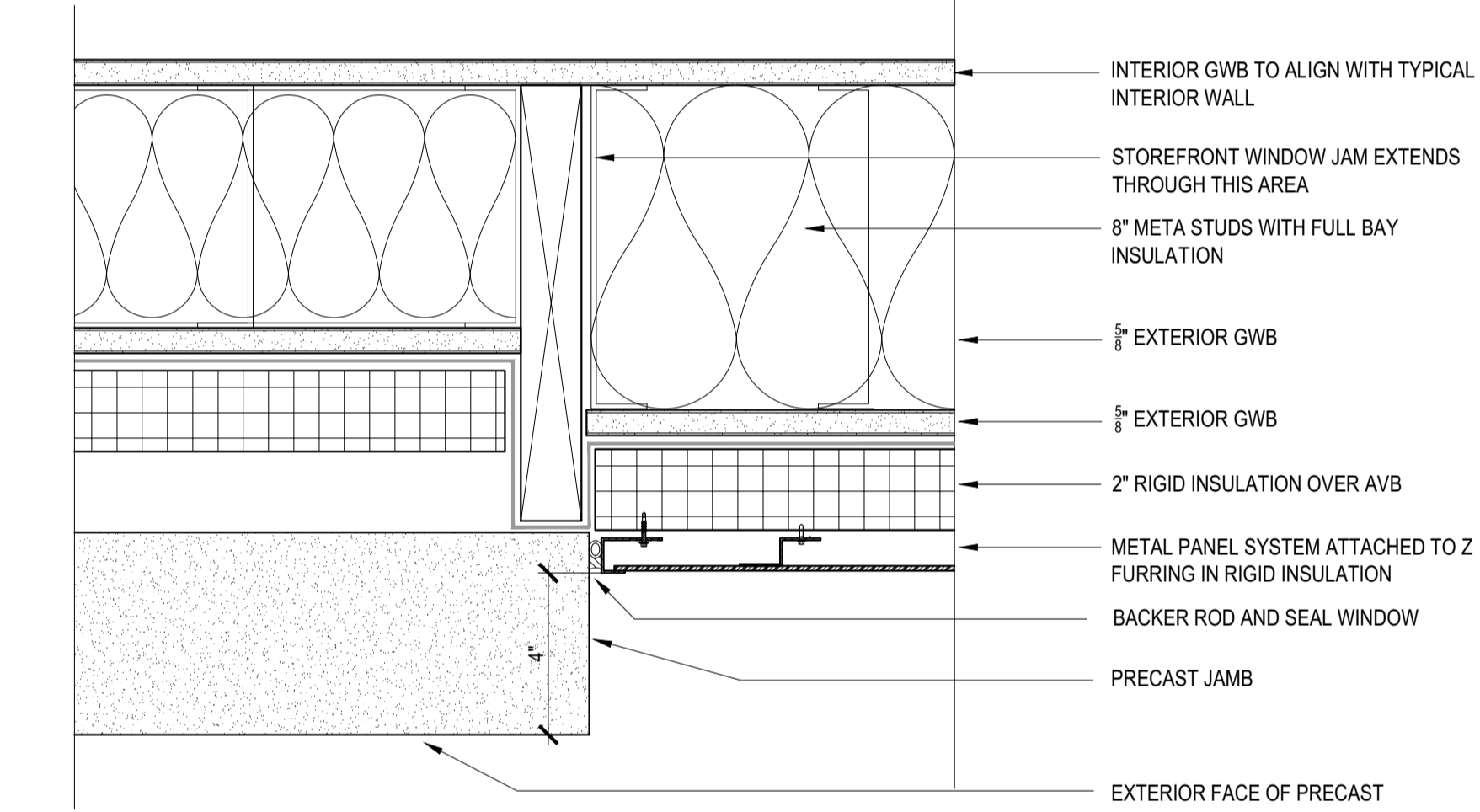
7 STOREFRONT HEAD AT METAL PANEL SYSTEM  
3" = 1'-0"



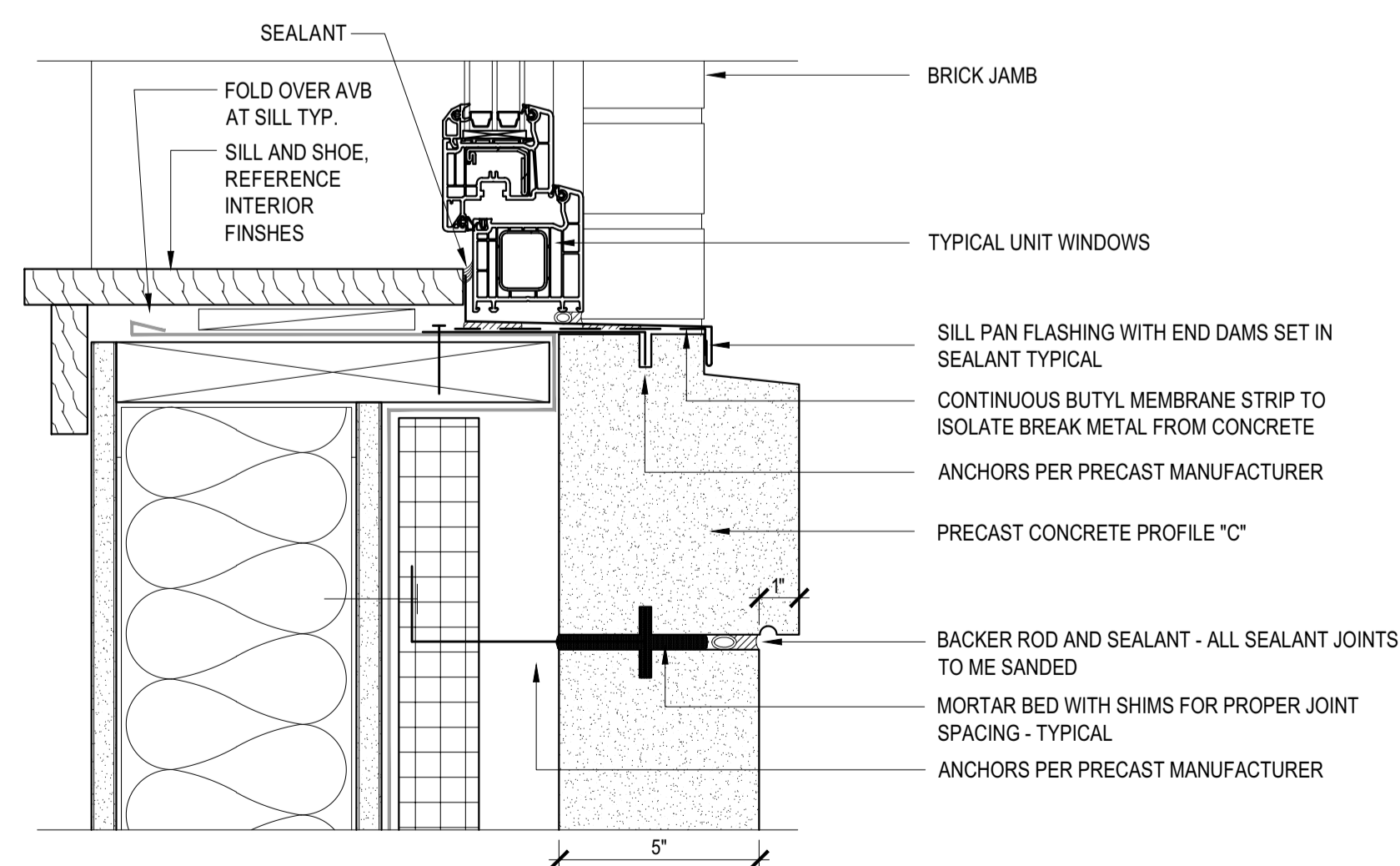
6 TYPICAL PAN FLASHING DETAIL  
1 1/2" = 1'-0"



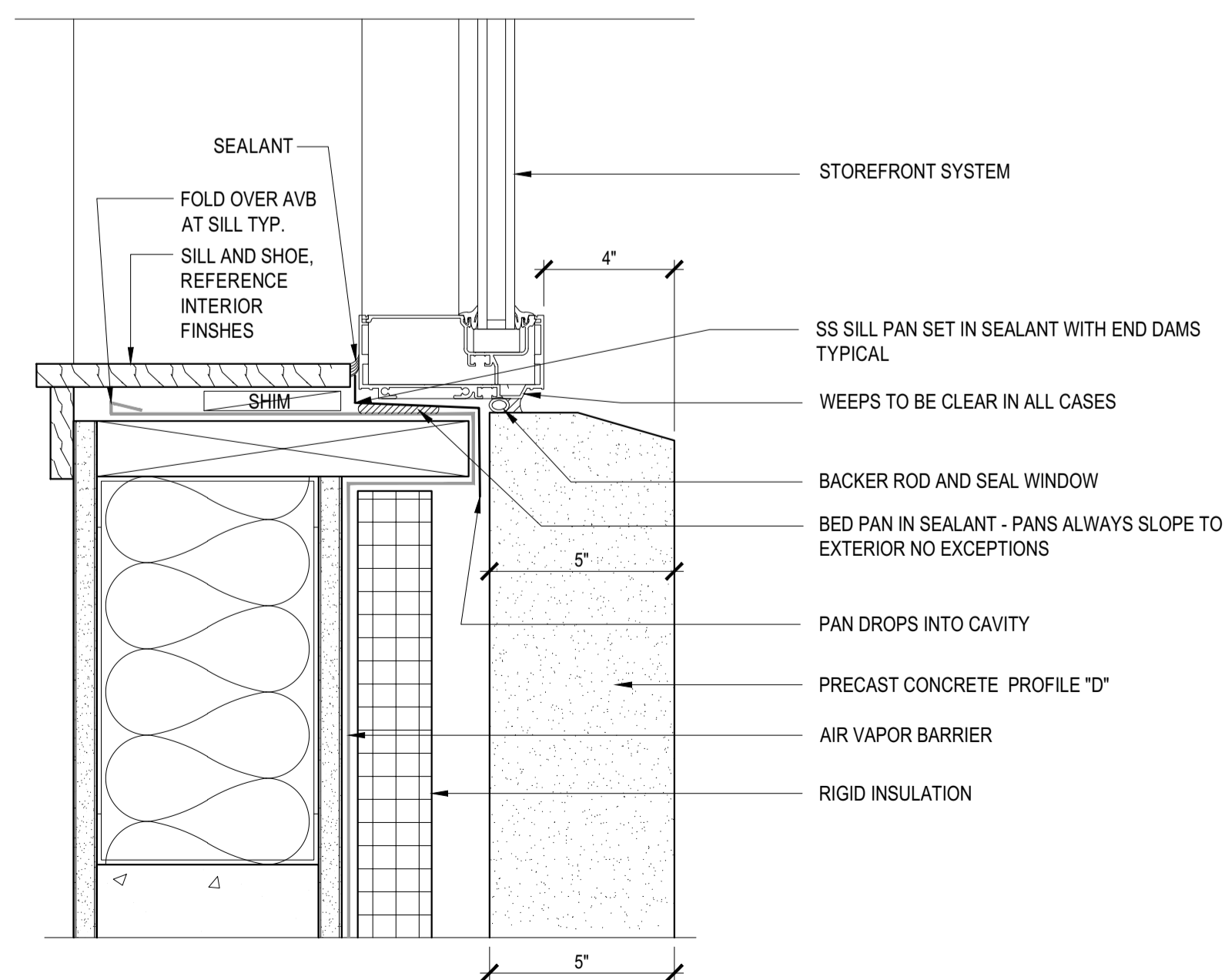
5 STOREFRONT JAMB AT PRECAST CONCRETE  
3" = 1'-0"



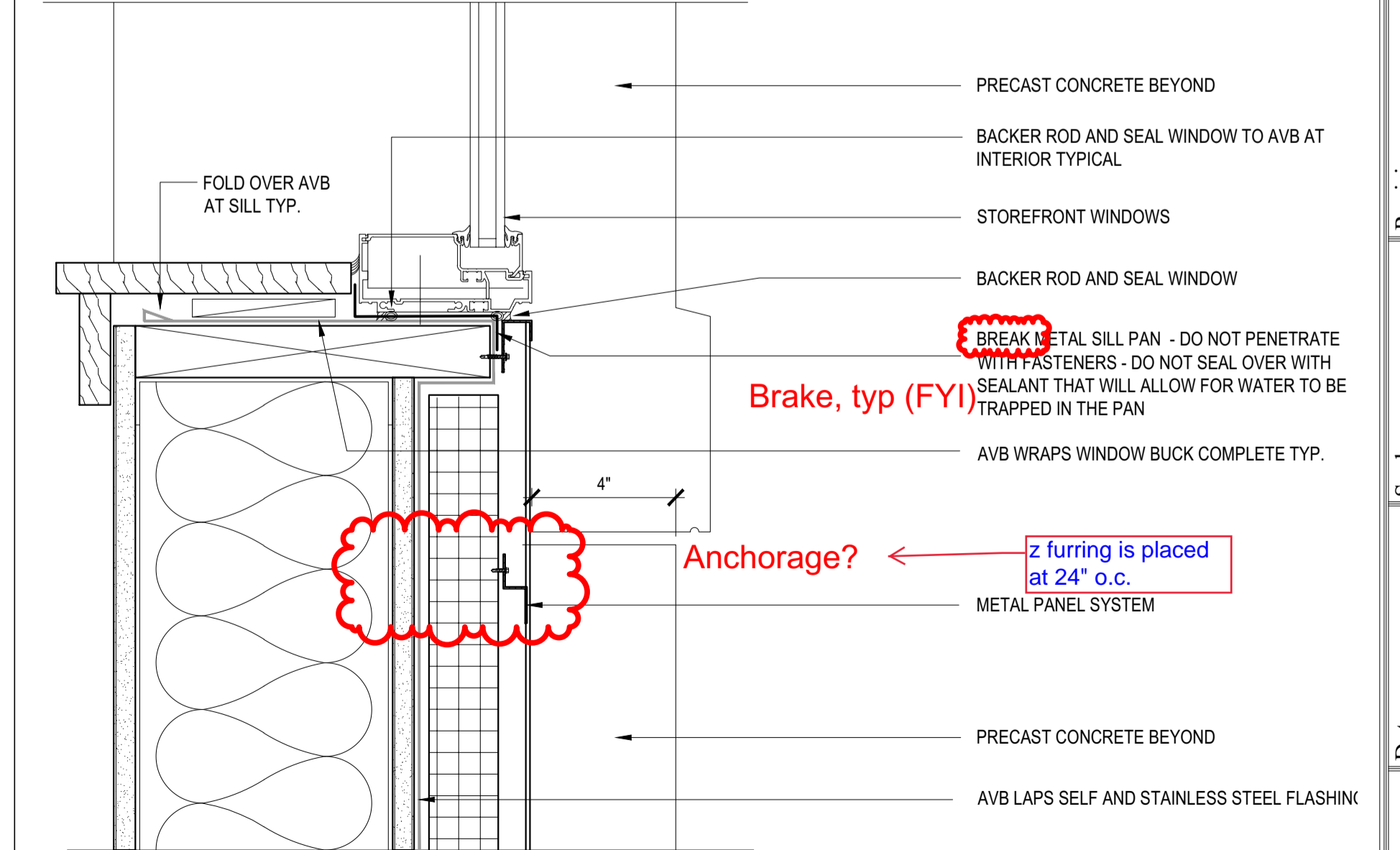
4 METAL PANEL JAMB AT PRECAST CONCRETE  
3" = 1'-0"



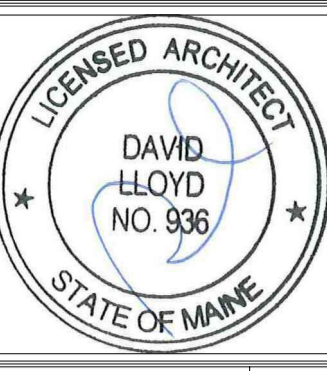
3 TYPICAL WINDOW SILL AT PRECAST BELOW  
3" = 1'-0"



2 TYPICAL STOREFRONT WINDOW SILL  
3" = 1'-0"



1 SILL STOREFRONT AT METAL PANEL - PRECAST CONCRETE  
3" = 1'-0"



Prepared For:  
**EssexNorth  
Portland LLC**  
P.O. Box 394  
Topsfield, MA 01963

Consultant:  
**ENVELOPE**  
ARCHITECTURE & CONSULTING  
BUILDING ENVELOPE DESIGN  
CONSULTING, INVESTIGATION AND  
COMMISSIONING - WINDUWAN, ME  
207-807-6661

Architect:  
**ARCHETYPE**  
architects  
48 Union Wharf Portland, Maine 04101  
(207) 772-6002 ARCHETYPE@ARCHETYPEPA.COM

Project:  
**THAMES STREET  
BUILDING**  
20 Thames Street, Portland Maine

Revisions:  
July 21, 2017  
Final Bid Set

Date:  
July 21, 2017  
Scale:  
As indicated

**A5.02**

**DETAILS**