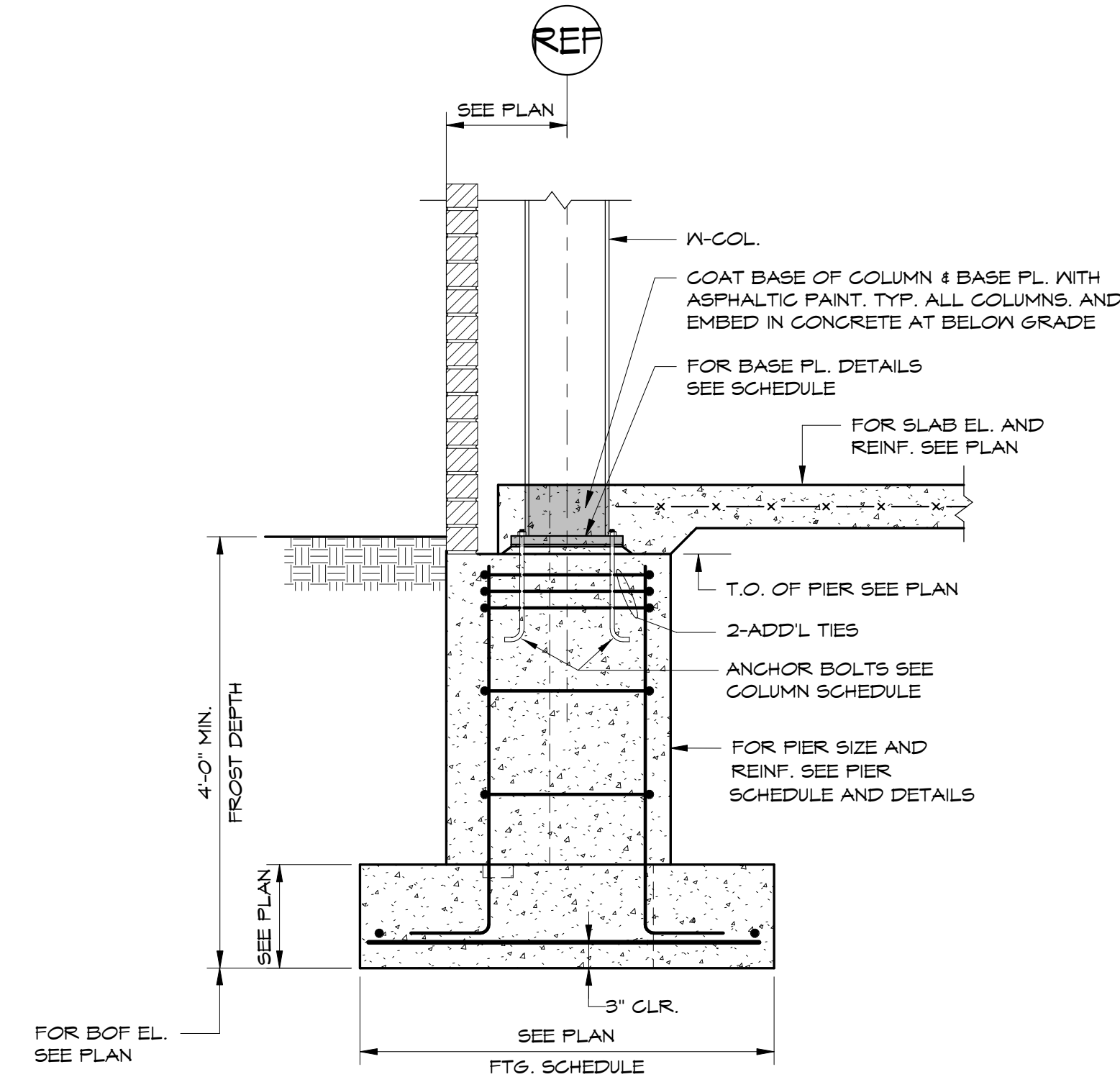
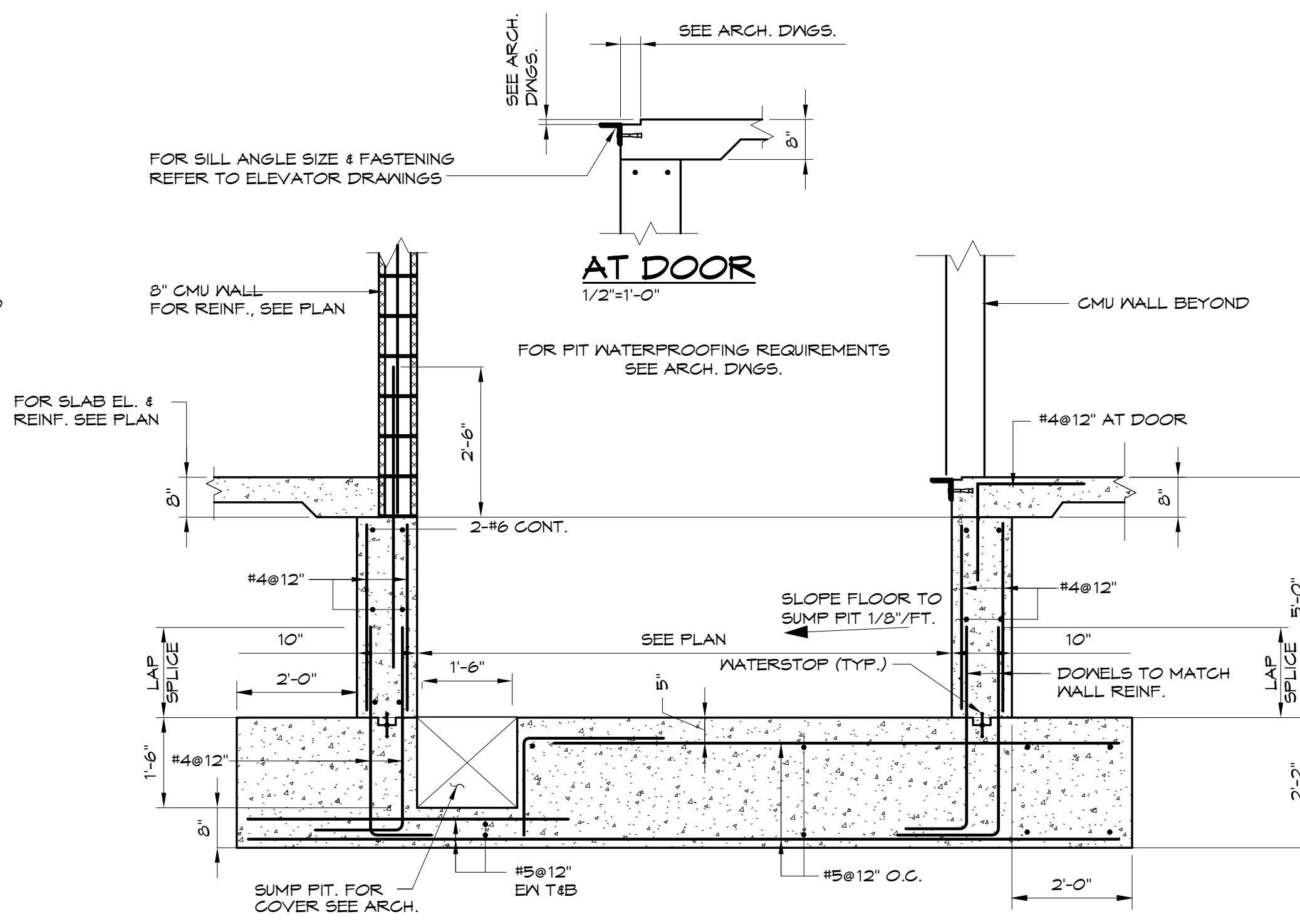


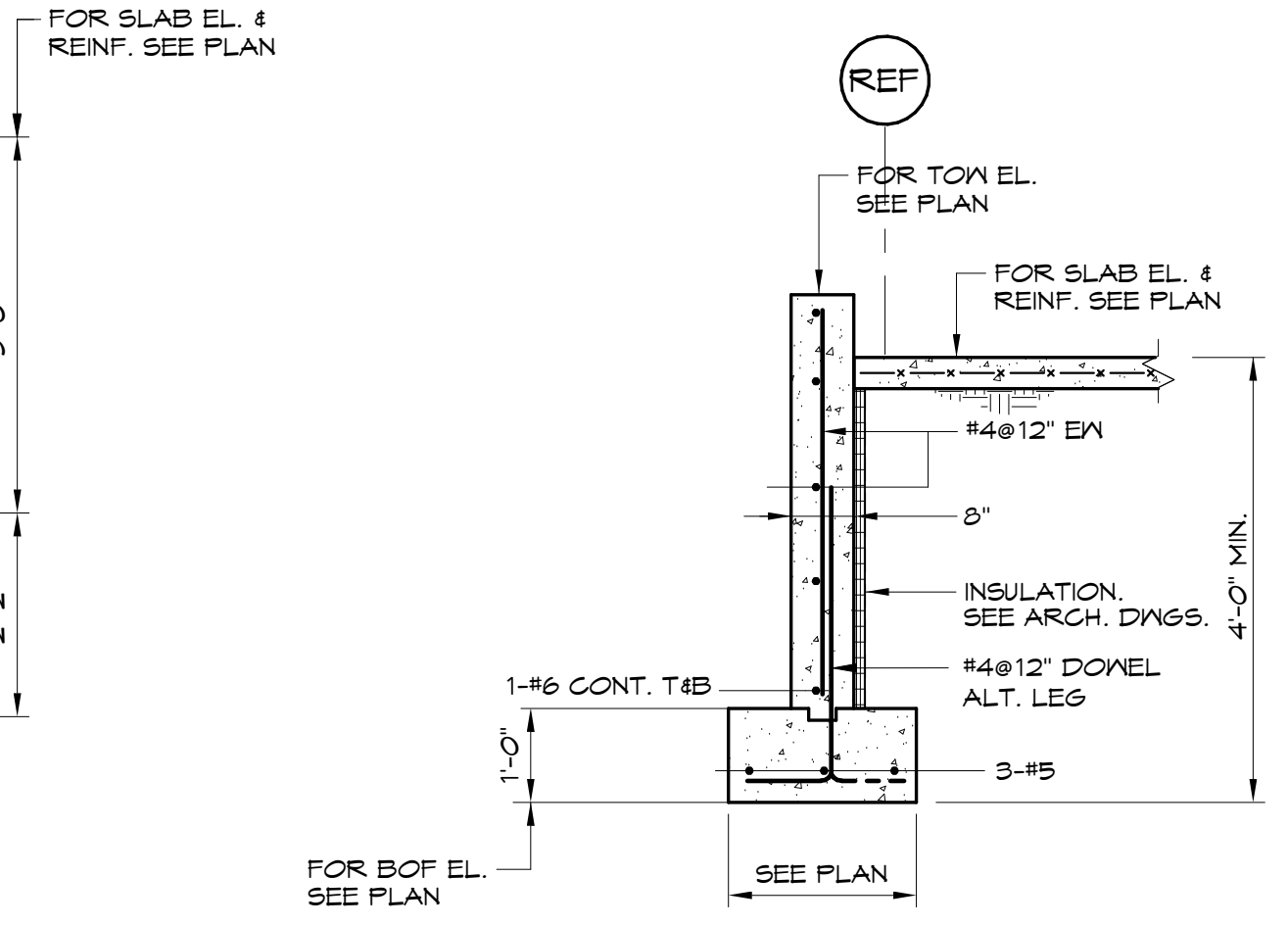
1 SECTION
S4.01 3/4" = 1'-0"



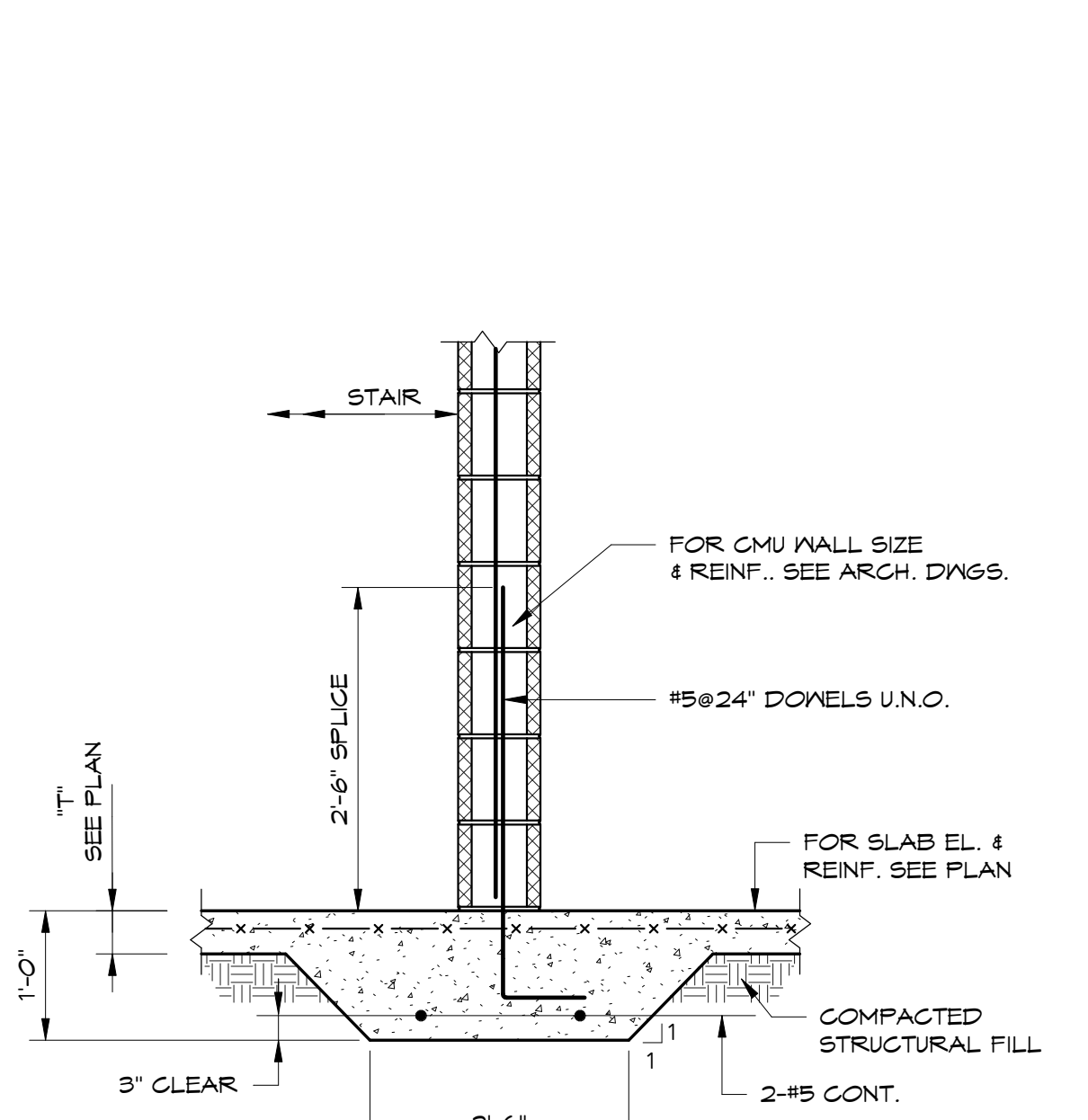
2 SECTION
S4.01 3/4" = 1'-0"



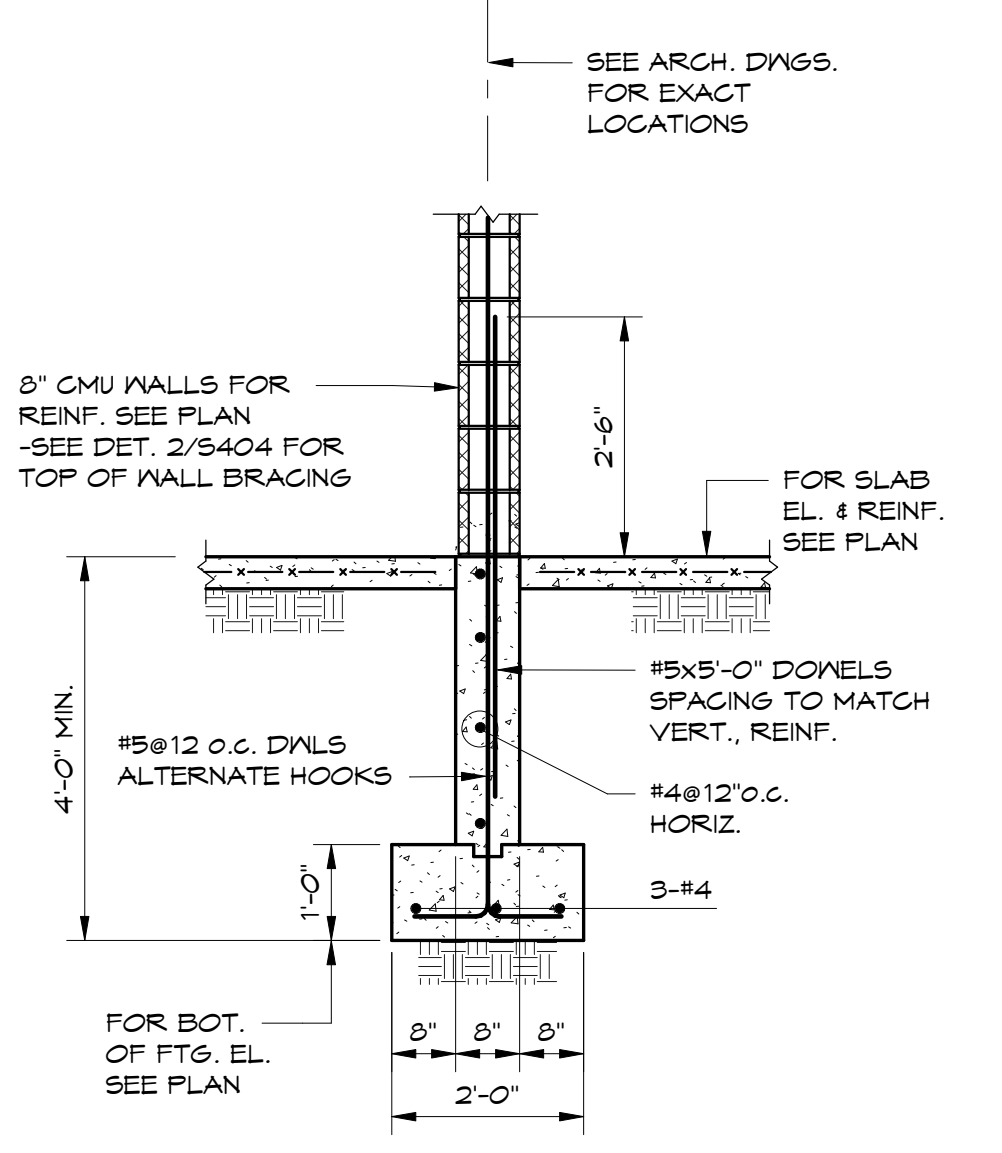
3 SECTION
S4.01 1/2" = 1'-0"



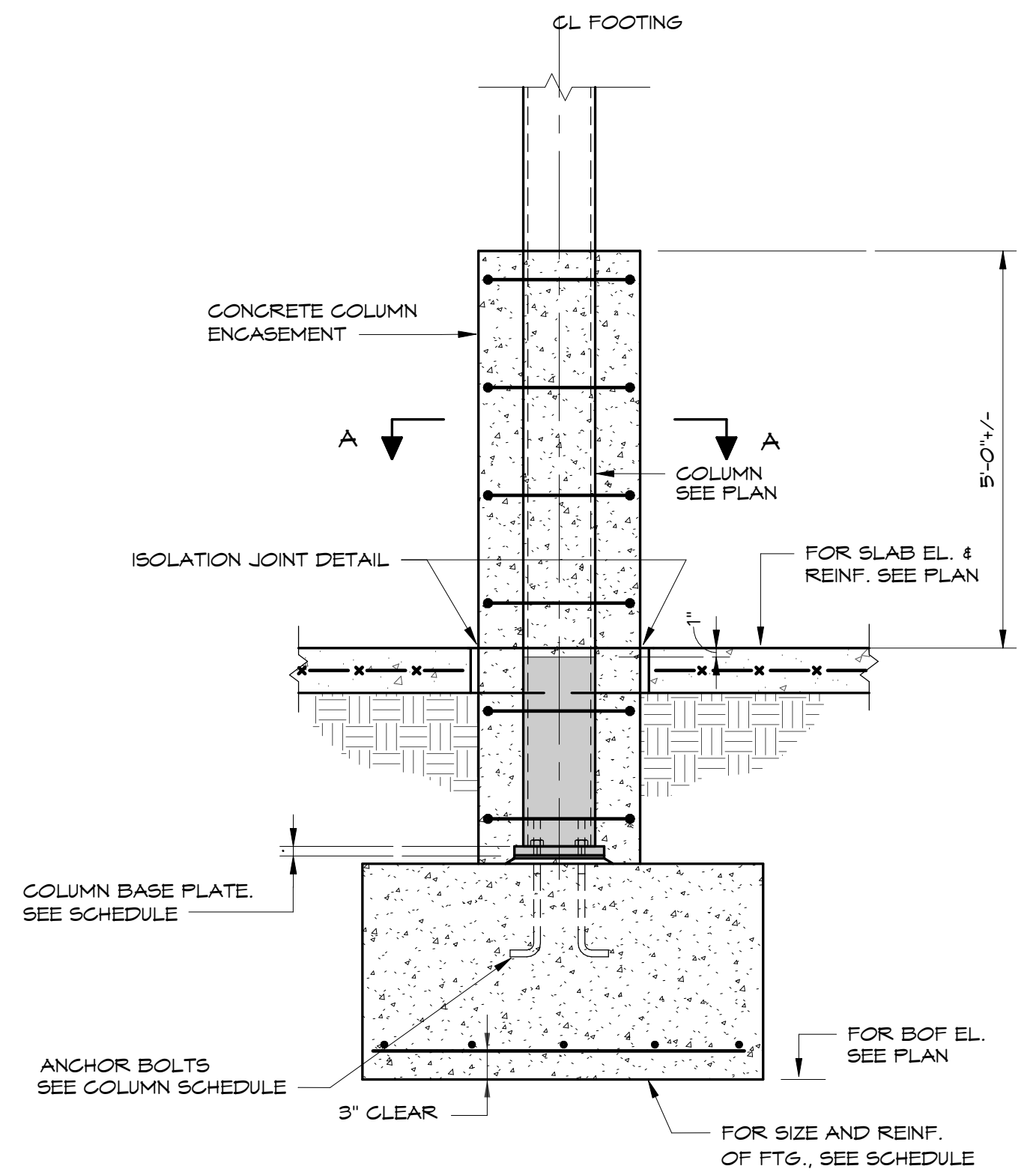
4 SECTION
S4.01 1/2" = 1'-0"



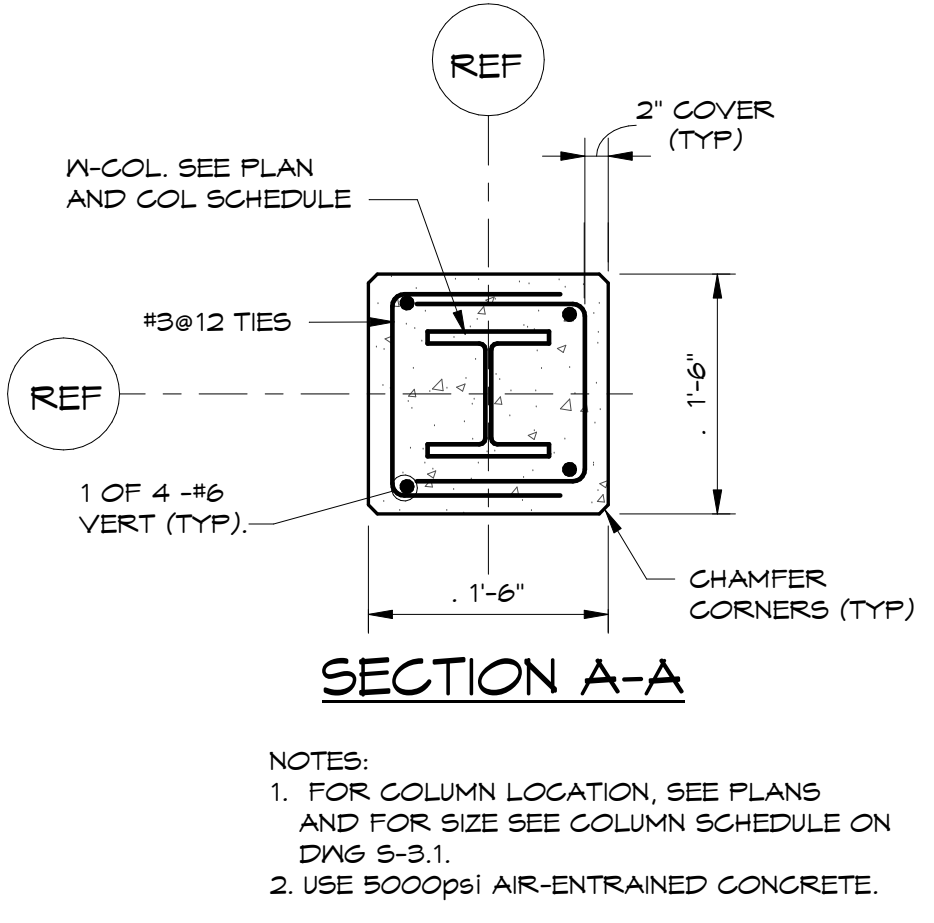
6 SECTION
S4.01 3/4" = 1'-0"



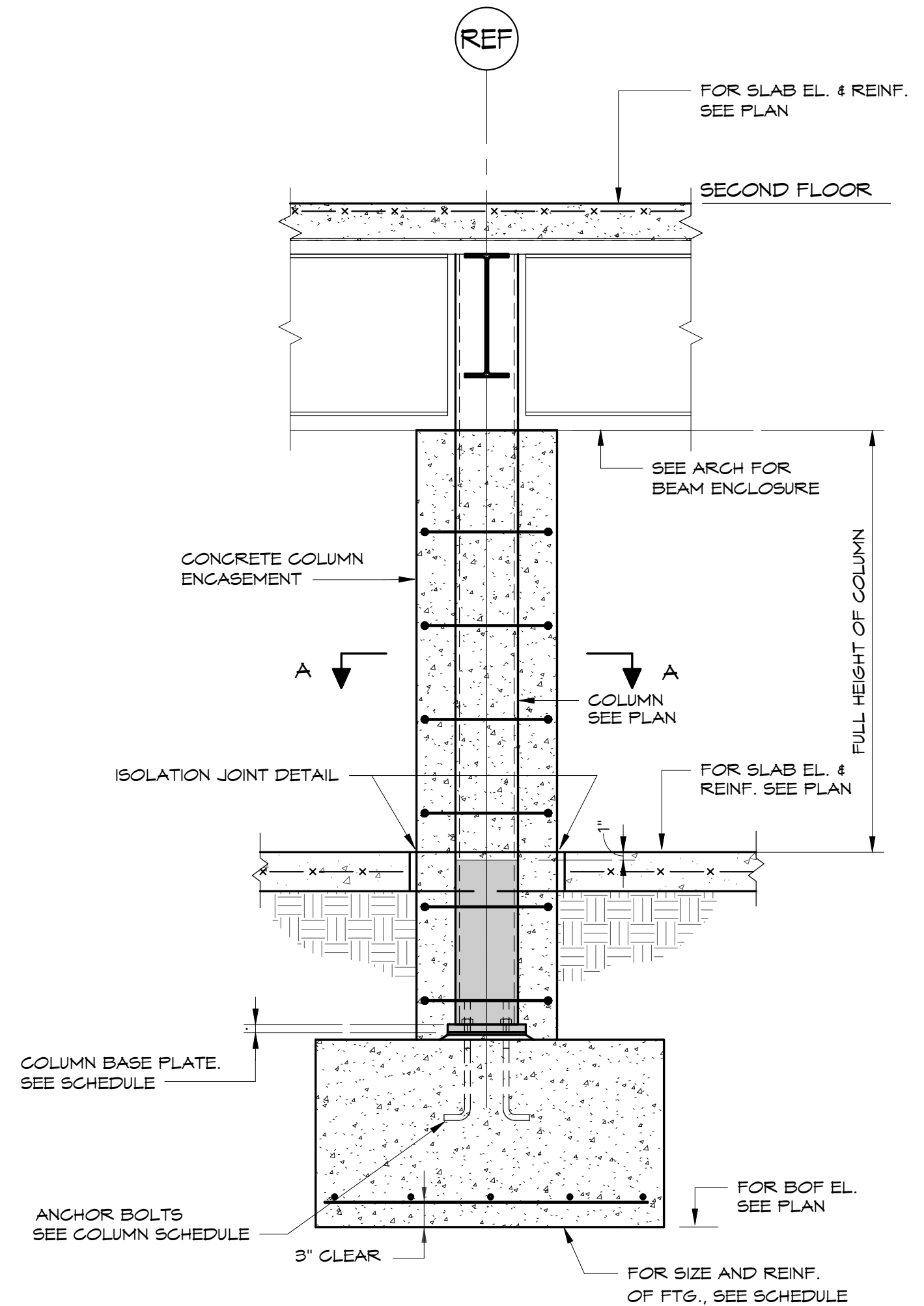
5 SECTION
S4.01 3/4" = 1'-0"



PARTIAL HEIGHT (e) ENCASEMENT
TYPICAL INTERIOR COLUMN FOOTING AND CONCRETE ENCASEMENT DETAIL



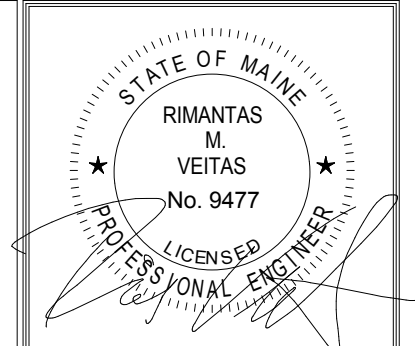
NOTES:
1. FOR COLUMN LOCATION, SEE PLANS AND FOR SIZE SEE COLUMN SCHEDULE ON DWS S-3.1.
2. USE 5000psi AIR-ENTRAINED CONCRETE.



FULL HEIGHT (f) ENCASEMENT
TYPICAL INTERIOR COLUMN FOOTING AND CONCRETE ENCASEMENT DETAIL

7 SECTION
S4.01

8 SECTION
S4.01



Prepared For:
**EssexNorth
Portland LLC**
P.O. Box 394
Topsfield, MA 01983

Consultant:
**VEITAS VEITAS
engineers**
680 Centre Street, Suite 101
Braintree, Massachusetts 02184
TEL: 781-843-2863 FAX: 781-843-2055

Architect:
**ARCHETYPE
architects**
48 Union Wharf Portland, Maine 04101
(207) 772-6022 Fax (207) 772-4056

Project:
**THAMES STREET
CONDOMINIUM**
20 Thames Street, Portland Maine

Revisions:	Date:	Description:
2	07/21/17	BID SET
3	08/03/17	Addendum #1
4	08/15/17	Addendum #2
5	10/11/17	Addendum #3

Scale:
As indicated

Date:
JULY 2017

S4.01

SECTIONS