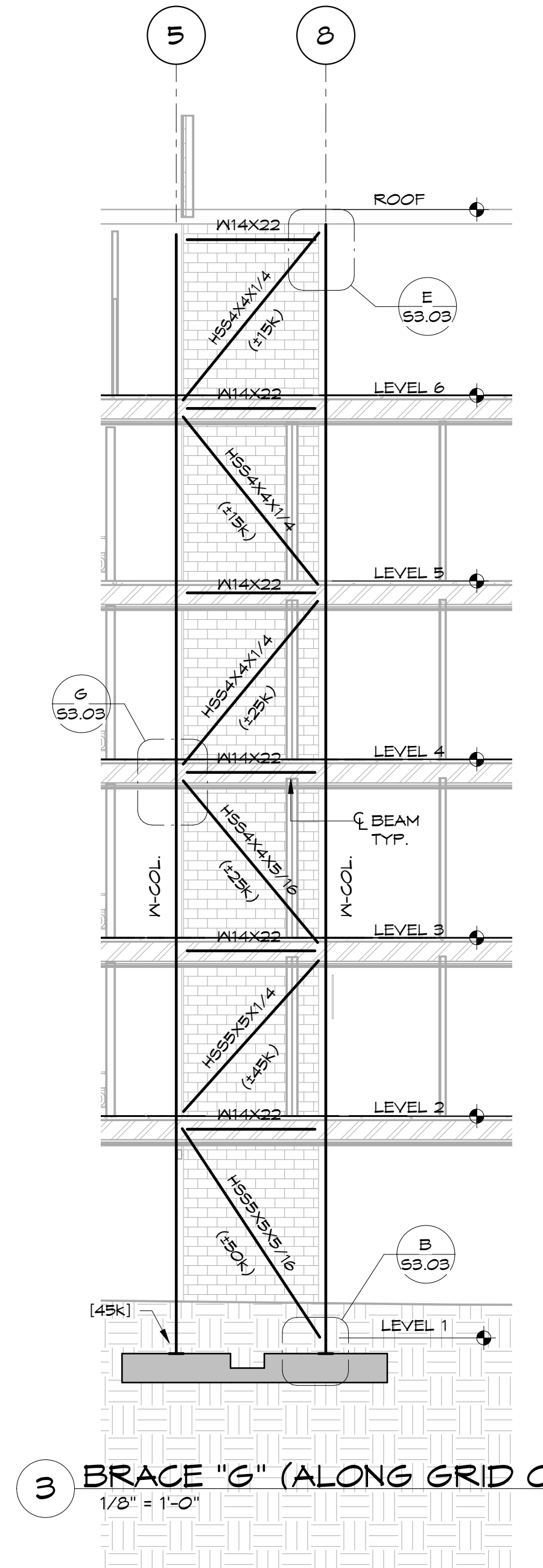
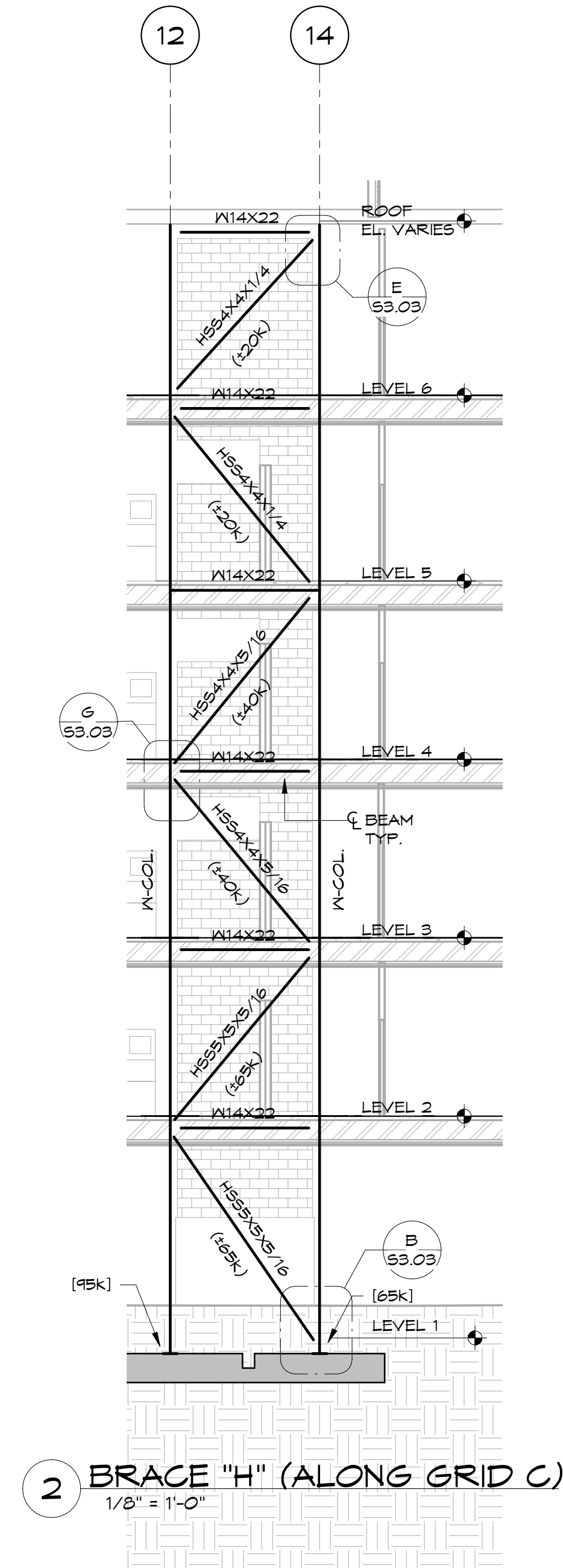


1 BRACE "F" (ALONG GRID E)  
1/8" = 1'-0"



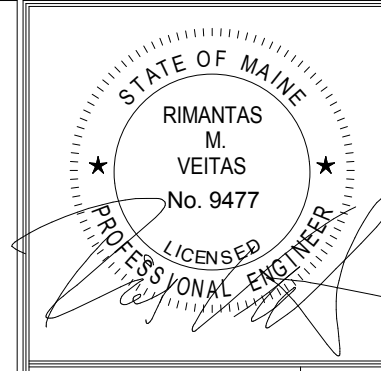
3 BRACE "G" (ALONG GRID C)  
1/8" = 1'-0"



2 BRACE "H" (ALONG GRID C)  
1/8" = 1'-0"

NOTE  
(105K) ETC. INDICATES FACTORED (ASD)  
AXIAL FORCE IN THE BRACE MEMBERS FOR  
THE USE IN CONNECTION DESIGN. TO  
CHANGE ASD LOAD TO LRFD MULTIPLY ASD  
BY 1.5 (ASDx1.5 = LRFD).  
(105K) ETC. INDICATES NET UPLIFT

BRACE DETAIL NOTES:  
1. FOR NUMBER, SIZE AND LENGTHS OF  
ANCHOR BOLTS SEE BASE PLATE DETAILS  
2. ALL BRACE GUSSET PLATES TO BE  
1/2" THICK MIN.  
3. DETAILER TO PROVIDE SIZE AND LENGTH  
OF FIELD FILLET WELDS OF HSS BRACE  
TO PLATES ON THE ERECTION DRAWINGS.  
4. SHEAR CAPACITY OF CONNECTION TO  
BE BRACING LOAD PLUS BEAM SHEAR  
INDICATED ON PLANS.  
5. DETAILER TO REVIEW INSTALLATION  
OF BRACE MEMBER. SUBMIT DIAGRAM  
INDICATING HOW BRACE WILL FIT.



Prepared For:  
**EssexNorth  
Portland LLC**  
P.O. Box 394  
Topsfield, MA 01983

Consultant:  
**VEITAS VEITAS  
engineers**  
630 Centre Street, Suite 101  
Branford, Massachusetts 02824  
TEL 781-843-2863 FAX 781-843-2055

Architect:  
**ARCHETYPE  
architects**  
48 Union Wharf Portland, Maine 04101  
(207) 772-6022 Fax (207) 772-4056

Project:  
**THAMES STREET  
CONDOMINIUM**  
20 Thames Street, Portland Maine

Revisions:	Date	Description
1	06/30/17	Steel Bid - Addendum #1
2	07/21/17	BID SET
4	08/15/17	Addendum #2
5	10/11/17	Addendum #3

Date:  
**JULY 2017**

Scale:  
**1/8" = 1'-0"**

**BRACE FRAME  
ELEVATIONS**

**S3.05**