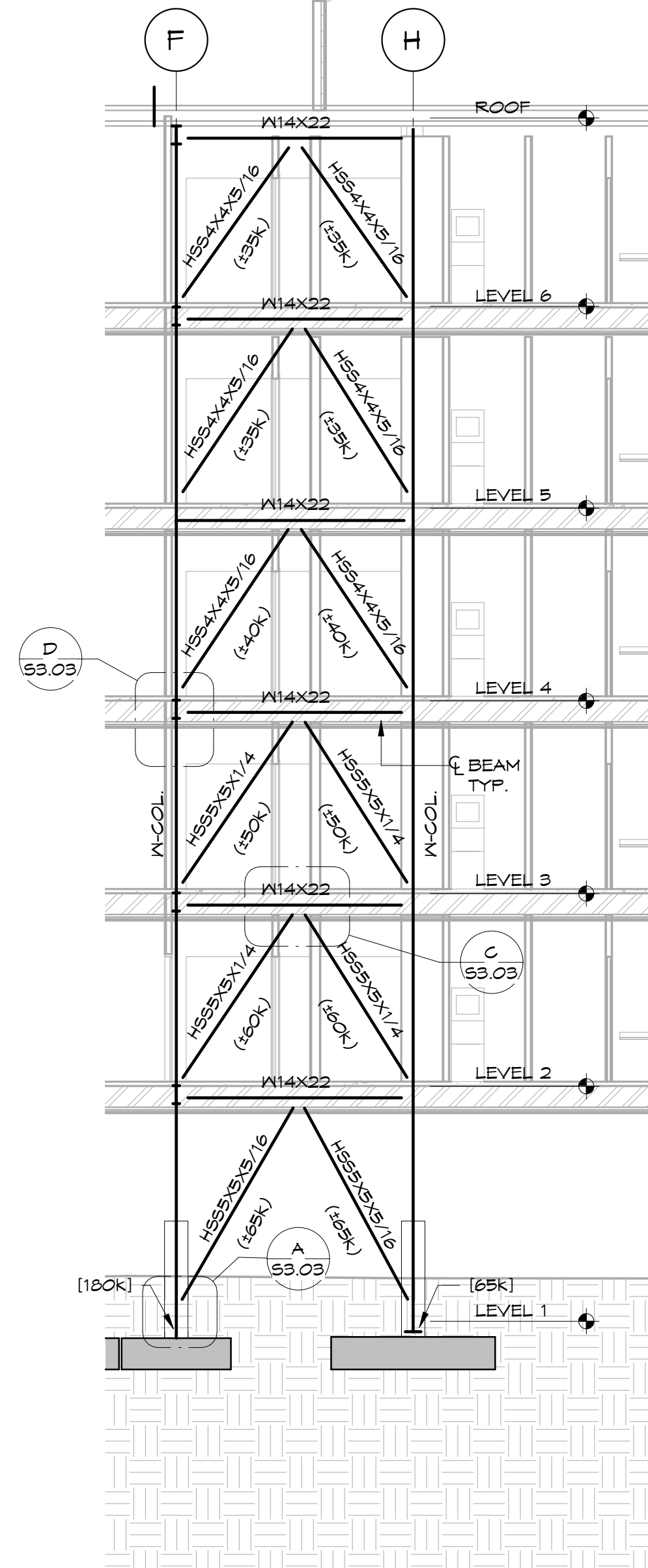
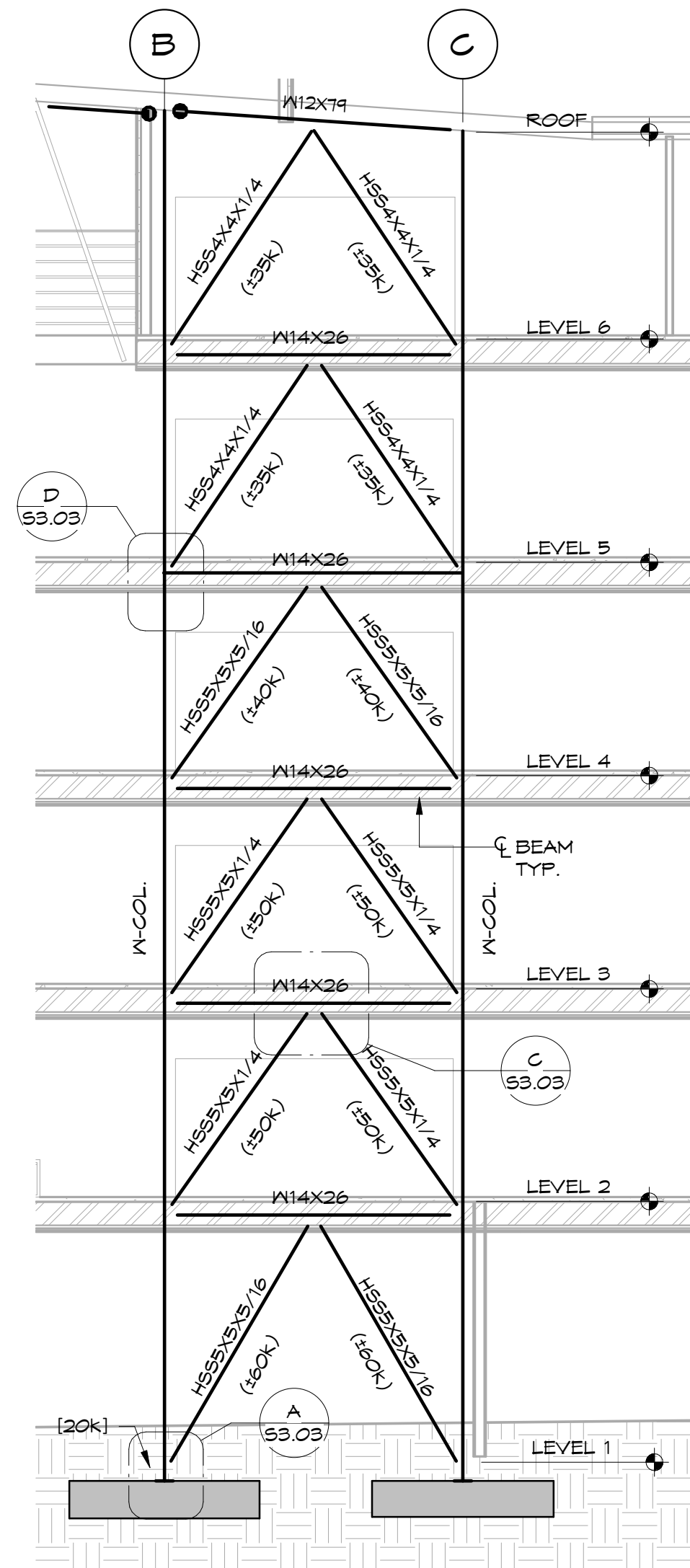


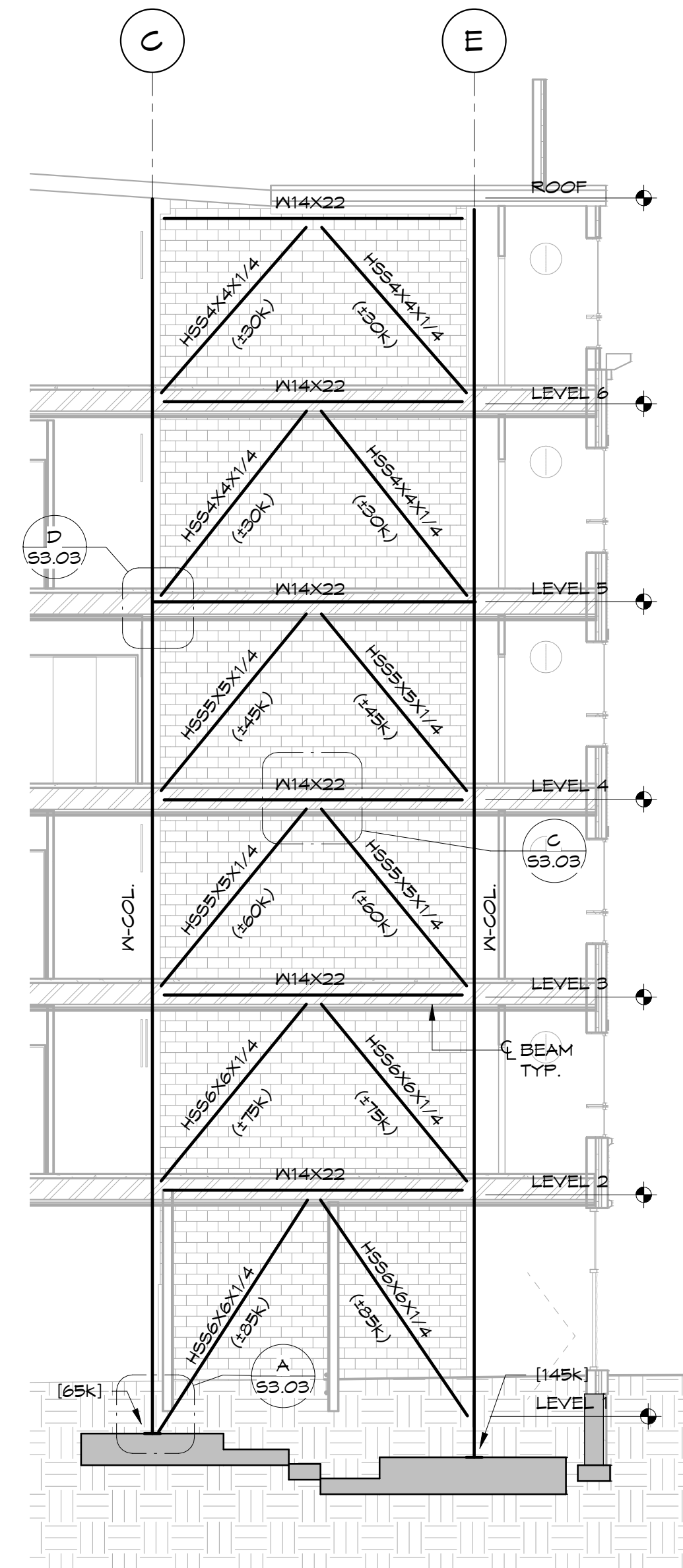
1 BRACE "A" (ALONG GRID 6)
 53.04 1/8" = 1'-0"



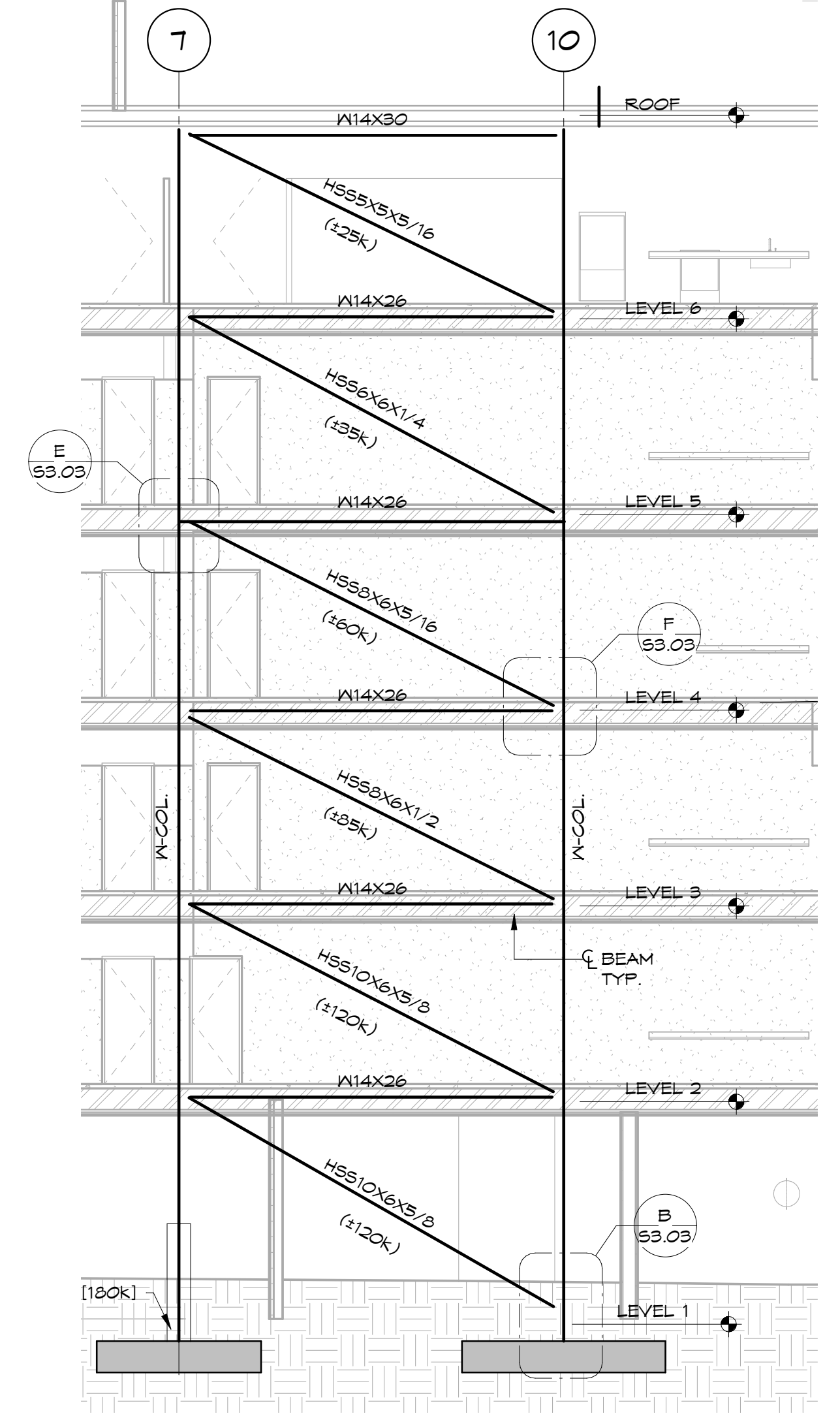
2 BRACE "B" (ALONG GRID 7)
 53.04 1/8" = 1'-0"



3 BRACE "C" (ALONG GRID 10)
 53.04 1/8" = 1'-0"



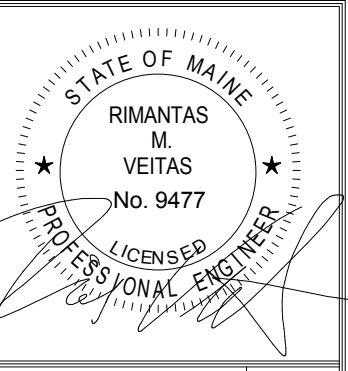
4 BRACE "D" (ALONG GRID 14)
 53.04 1/8" = 1'-0"



5 BRACE "E" (ALONG GRID F)
 53.04 1/8" = 1'-0"

NOTE
 (105K) ETC. INDICATES FACTORED (ASD)
 AXIAL FORCE IN THE BRACE MEMBERS FOR
 THE USE IN CONNECTION DESIGN. TO
 CHANGE ASD LOAD TO LRFD MULTIPLY ASD
 BY 1.5 (ASDx1.5 = LRFD).
 (105K) ETC. INDICATES NET UPLIFT

BRACE DETAIL NOTES:
 1. FOR NUMBER, SIZE AND LENGTHS OF
 ANCHOR BOLTS SEE BASE PLATE DETAILS
 2. ALL BRACE GUSSET PLATES TO BE
 5/8" THICK MIN.
 3. DETAILER TO PROVIDE SIZE AND LENGTH
 OF FIELD FILLET WELDS OF HSS BRACE
 TO PLATES ON THE ERECTION DRAWINGS.
 4. SHEAR CAPACITY OF CONNECTION TO
 BE BRACING LOAD PLUS BEAM SHEAR
 INDICATED ON PLANS.
 5. DETAILER TO REVIEW INSTALLATION
 OF BRACE MEMBER, SUBMIT DIAGRAM
 INDICATING HOW BRACE WILL FIT.



Prepared For:
**EssexNorth
 Portland LLC**
 P.O. Box 394
 Topsfield, MA 01983

Consultant:
VEITAS VEITAS
 engineers
 630 Granite Street, Suite 101
 Braintree, Massachusetts 02184
 TEL: 781.843.2863 FAX: 781.849.2055

Architect:
ARCHETYPE
 architects
 48 Union Wharf Portland, Maine 04101
 (207) 772-6022 Fax (207) 772-4056

Project:
**THAMES STREET
 CONDOMINIUM**
 20 Thames Street, Portland Maine

Revisions:	Date	Description
1	06/30/17	Steel Bid - Addendum #1
2	07/21/17	BID SET
5	10/11/17	Addendum #3

Date: JULY 2017
 Scale: 1/8" = 1'-0"
**BRACE FRAME
 ELEVATIONS**

S3.04