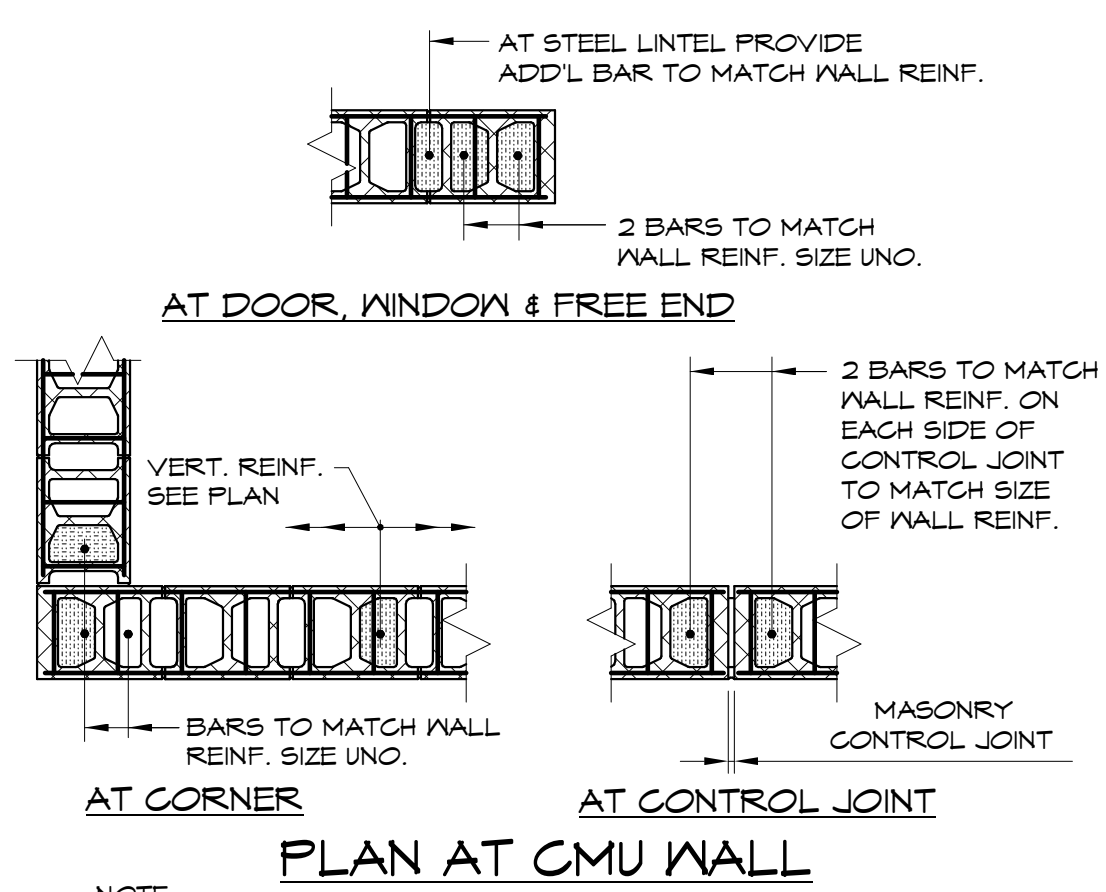


TYPICAL LOW LIFT GROUTING DETAIL

CMU LAP SCHEDULE	
BAR SIZE	LAP LENGTH
#4	24"
#5	30"
#6	36"
#7	42"
#8	48"

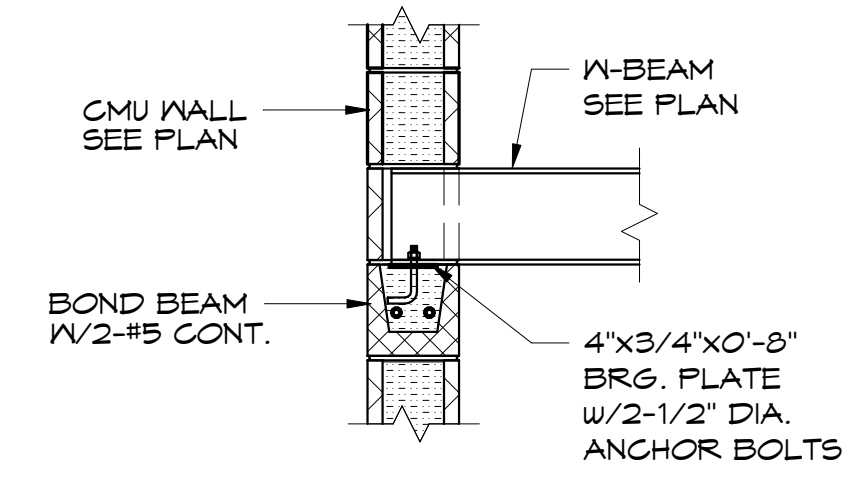
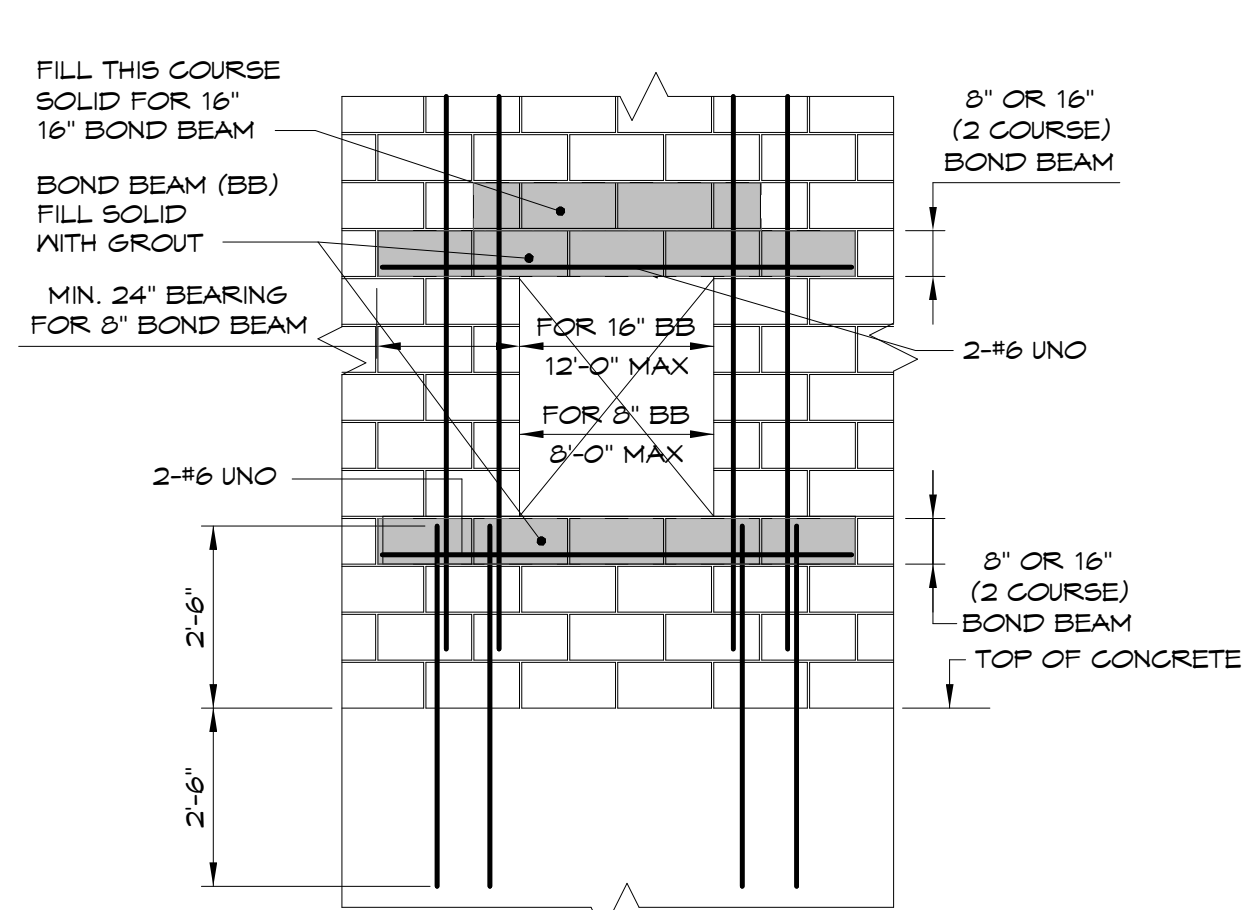
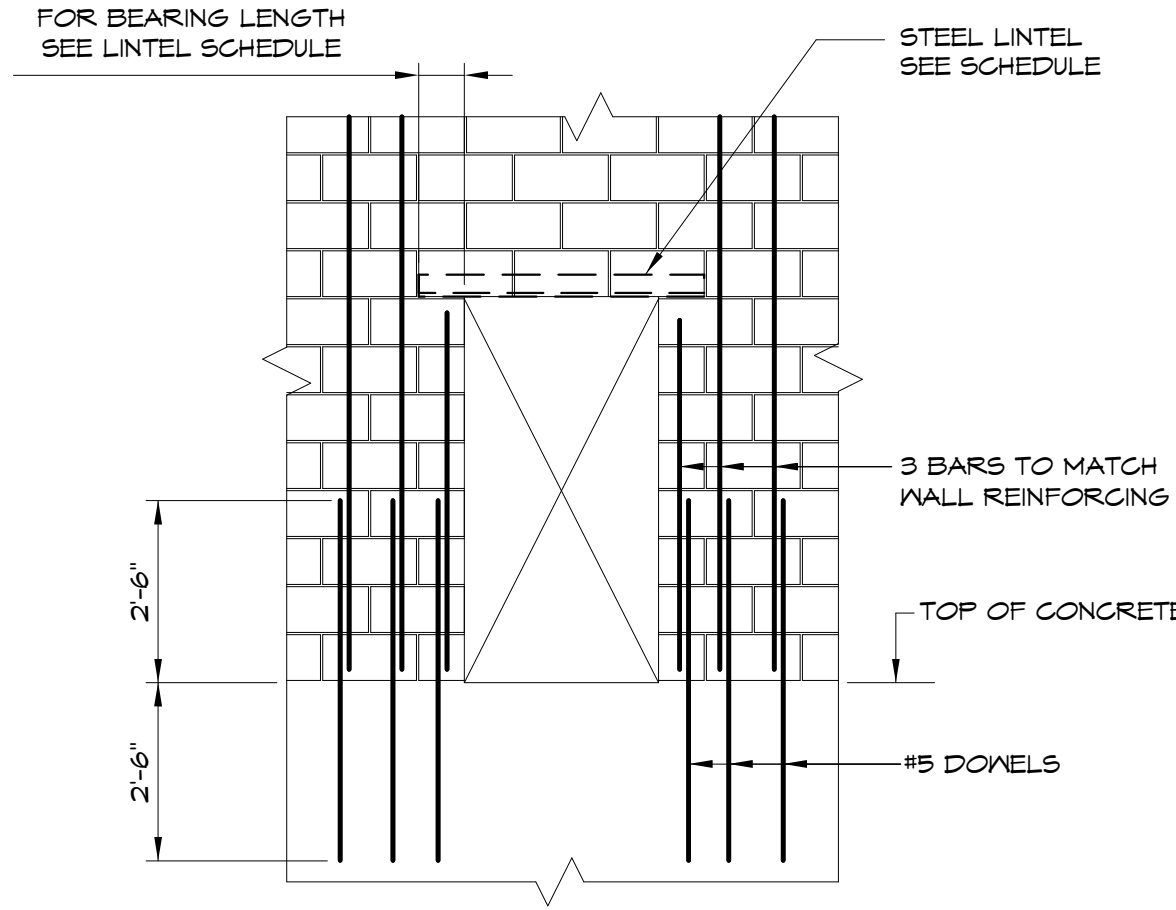
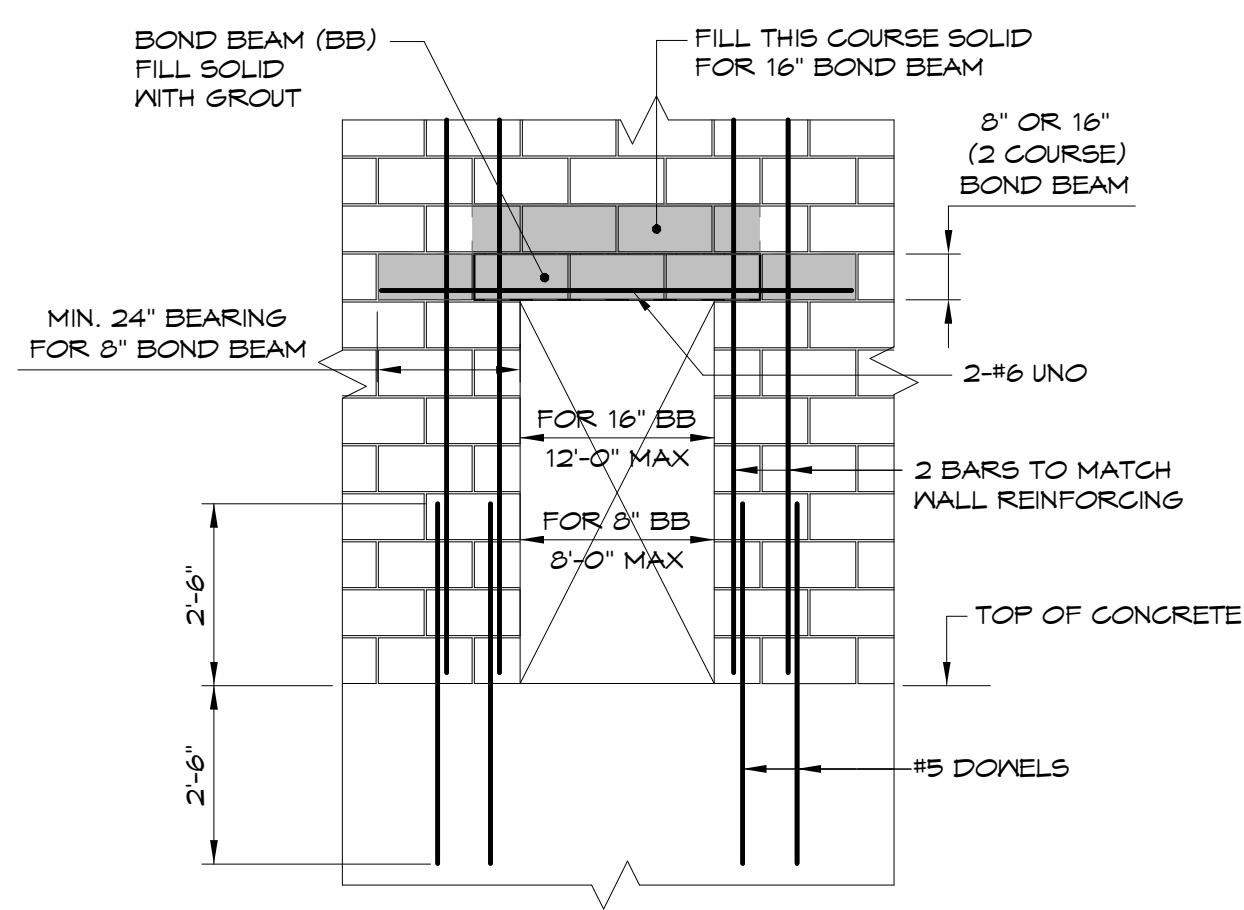


PLAN AT CMU WALL

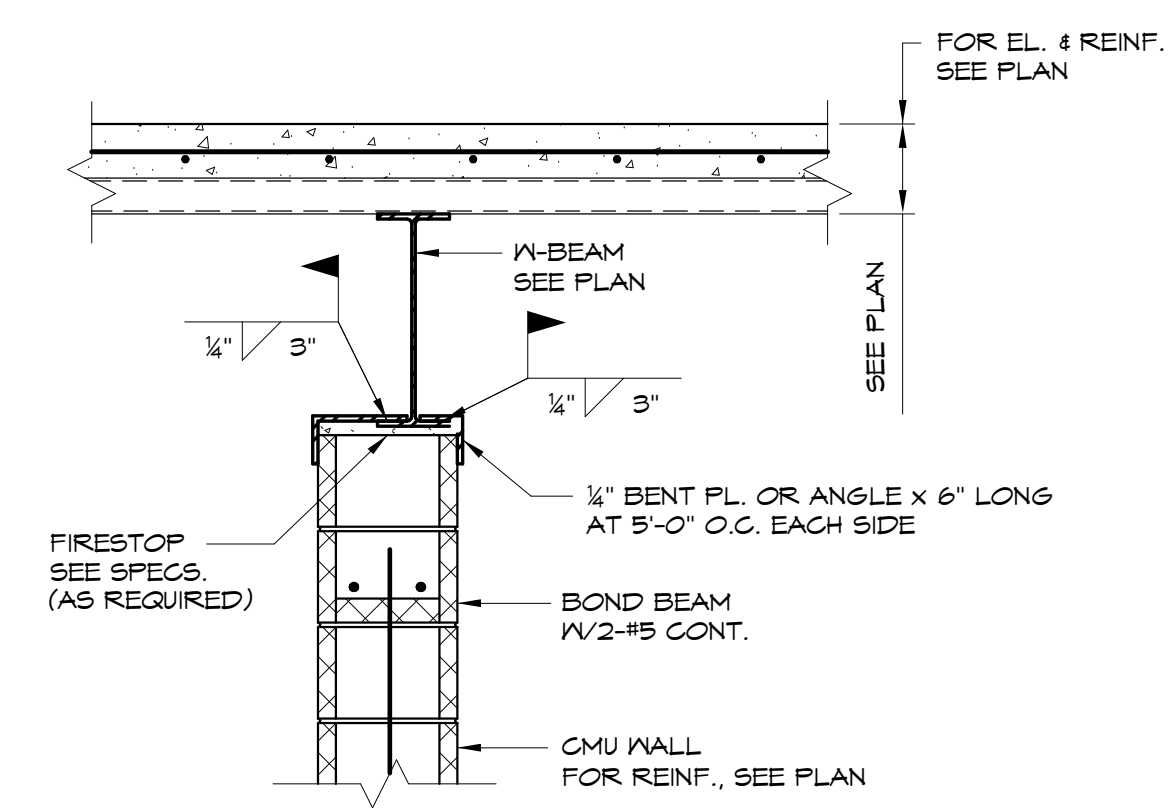
- NOTE:**  
1. PROVIDE LADDER TYPE HORIZONTAL REINFORCING AT 16" O.C.  
2. FOR HORIZONTAL BOND BEAMS & ELEVATIONS, SEE GROUTING DETAILS, PLANS & SECTIONS.

LOOSE LINTEL SCHEDULE			
OPENING	LINTEL	BEARING EACH END	REMARKS
3'-6" OR LESS	L3 1/2x3 1/2x1/4	4"	---
OVER 3'-6" THRU 5'-6"	L4x3 1/2x1/4	6"	LLV
OVER 5'-6" THRU 7'-6"	L6x3 1/2x3/8	6"	LLV
OVER 7'-6" THRU 9'-0"	L6x3 1/2x3/8	6"	LLV

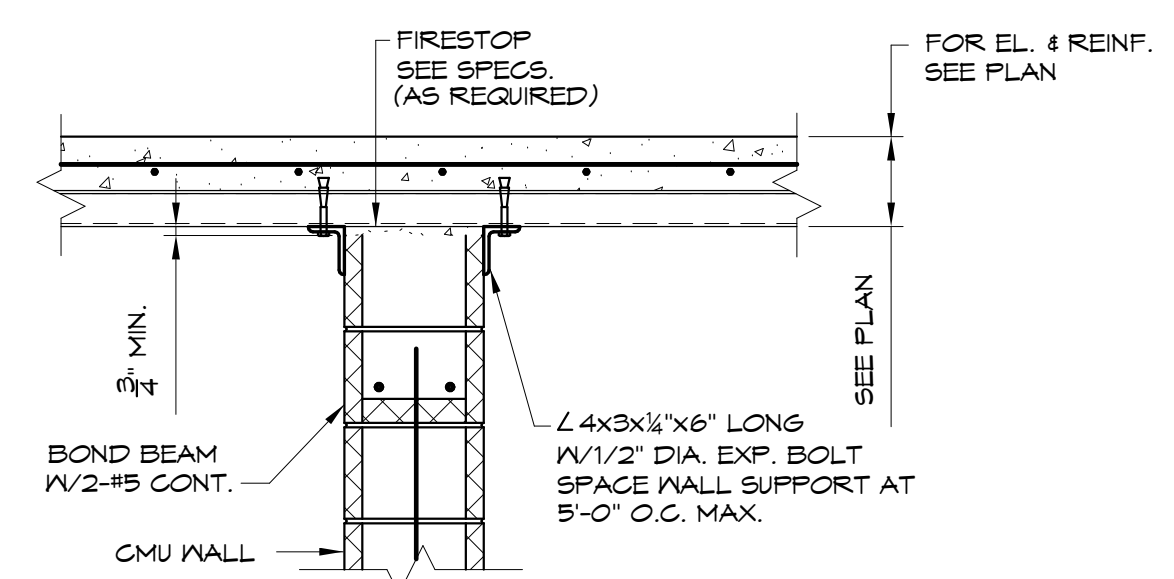
- NOTES:**  
1. WHERE ANGLE LINTELS ARE REQUIRED, PROVIDE ONE ANGLE FOR EACH 4" OR LESS THICKNESS OF MASONRY.  
2. FOR OPENINGS OVER 6'-0", PROVIDE SOLID MASONRY JAMB UNDER LINTEL AT EACH SIDE OF OPENING.  
3. LINTELS INDICATED ON PLAN SUPERSEDE THE REQUIREMENTS OF THIS SCHEDULE.  
4. ALL EXTERIOR LINTELS SHALL BE GALVANIZED.  
5. ALL OTHER LINTELS SHALL BE PRIME PAINTED.



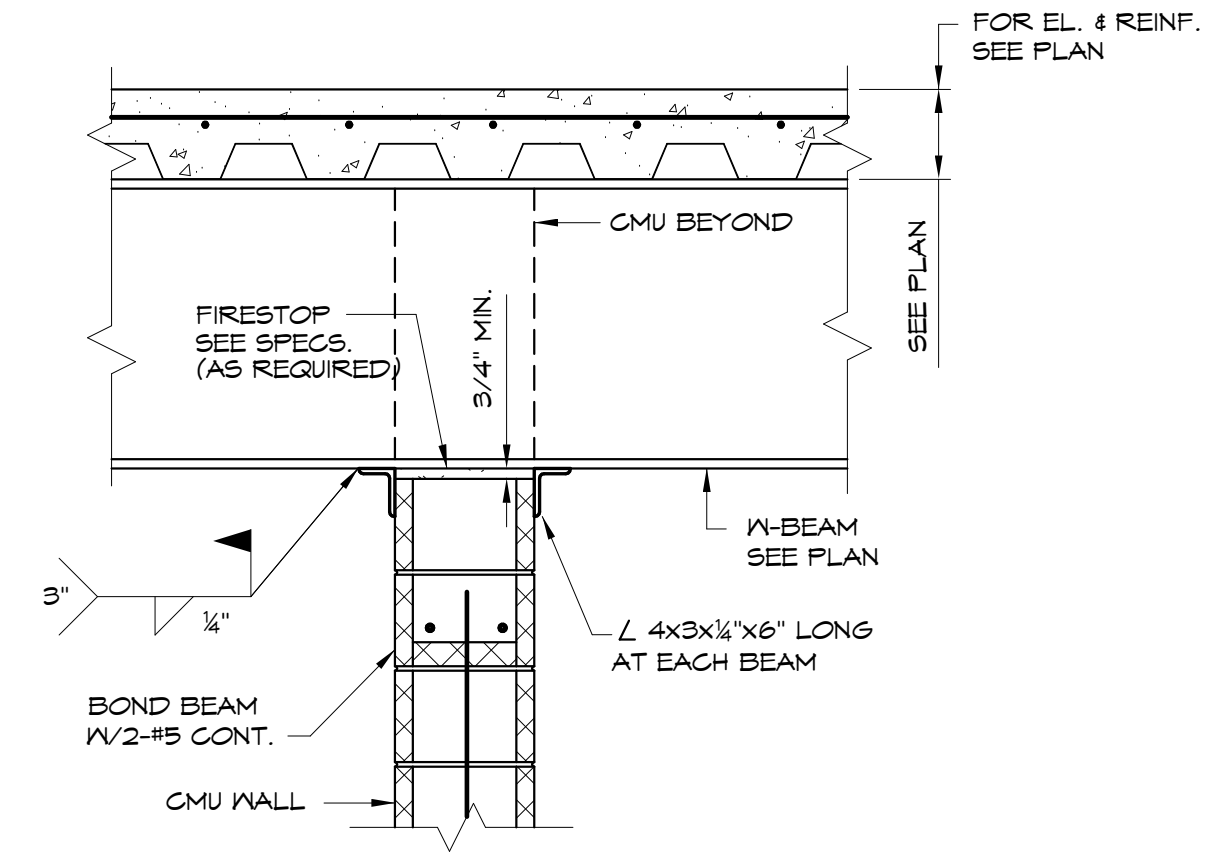
CMU BEAM BEARING DETAIL



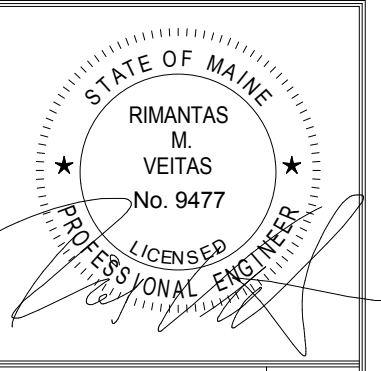
TOP OF CMU WALL LATERAL SUPPORT DETAIL



TOP OF CMU WALL LATERAL SUPPORT DETAIL



TOP OF CMU WALL SUPPORT DETAIL



Prepared For: **EssexNorth Portland LLC**  
P.O. Box 394  
Topsfield, MA 01983

Consultant: **VEITAS VEITAS engineers**  
680 Cornis Street, Suite 101  
Braintree, Massachusetts 02184  
TEL 781.843.2863 FAX 781.849.2055

Architect: **ARCHETYPE architects**  
48 Union Wharf Portland, Maine 04101  
(207) 772-6022 Fax (207) 772-4056

Project: **THAMES STREET CONDOMINIUM**  
20 Thames Street, Portland Maine

Revisions:	1	06/30/17	Steel Bid - Addendum #1
	2	07/21/17	BID SET
	5	10/11/17	Addendum #3

Date: **JULY 2017**  
Scale: **As indicated**  
**TYPICAL DETAILS**

**S2.04**