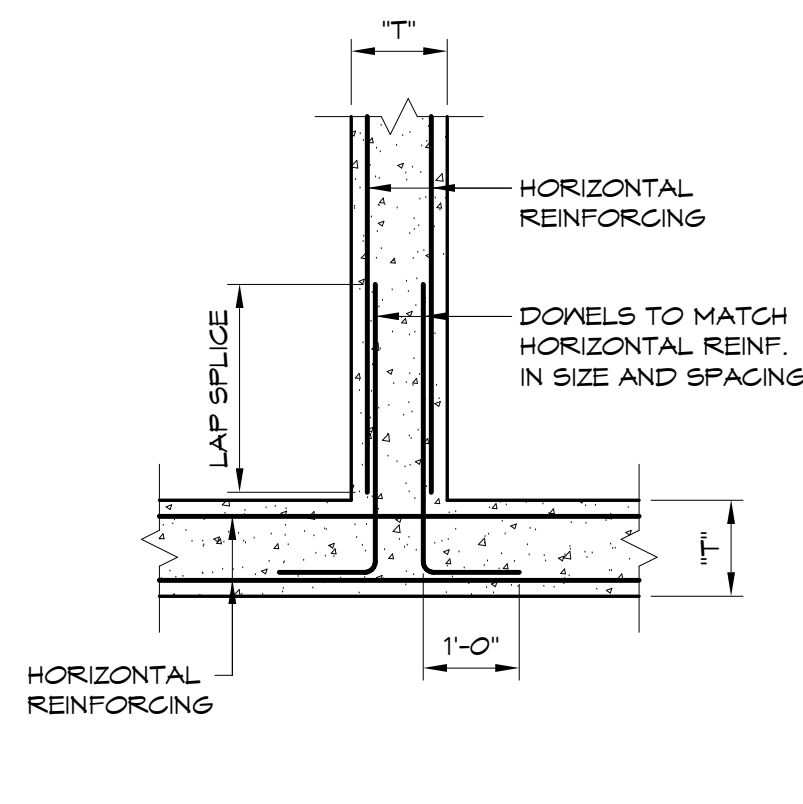
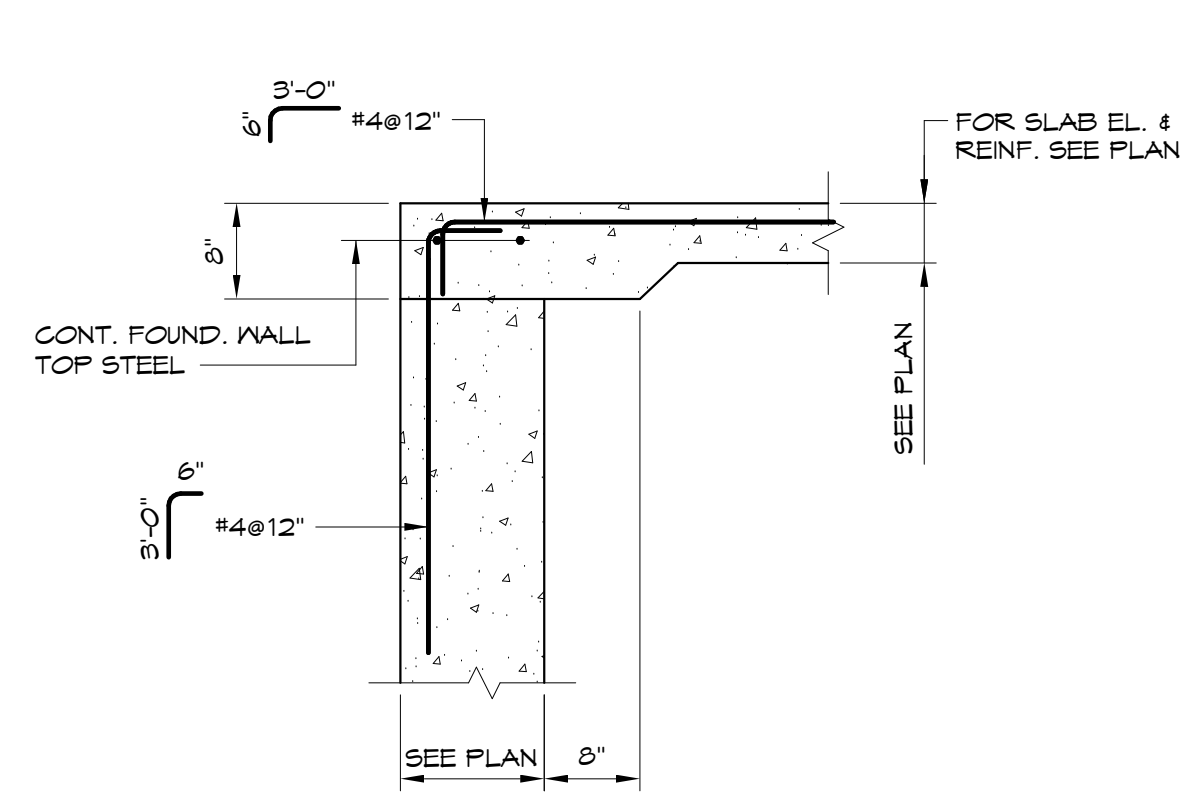


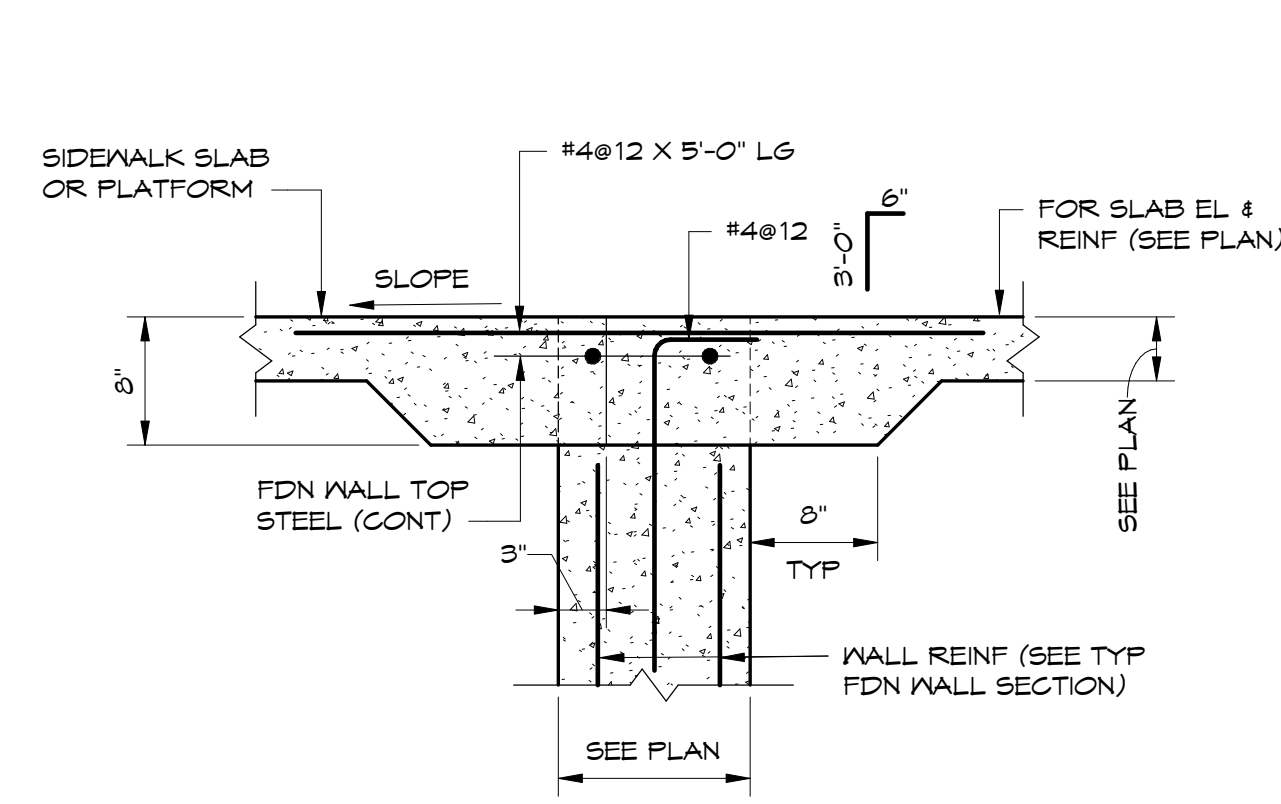
HORIZONTAL REINFORCING OF CONCRETE WALLS



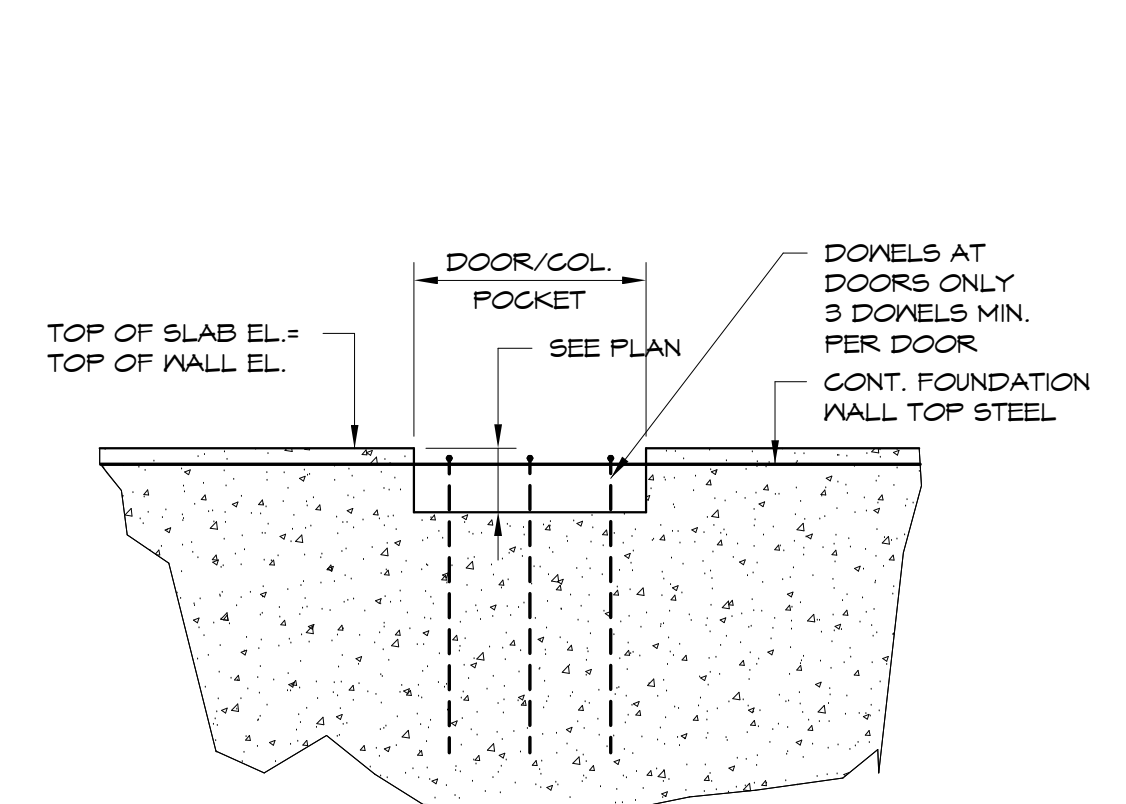
HORIZONTAL REINFORCING OF CONCRETE WALLS



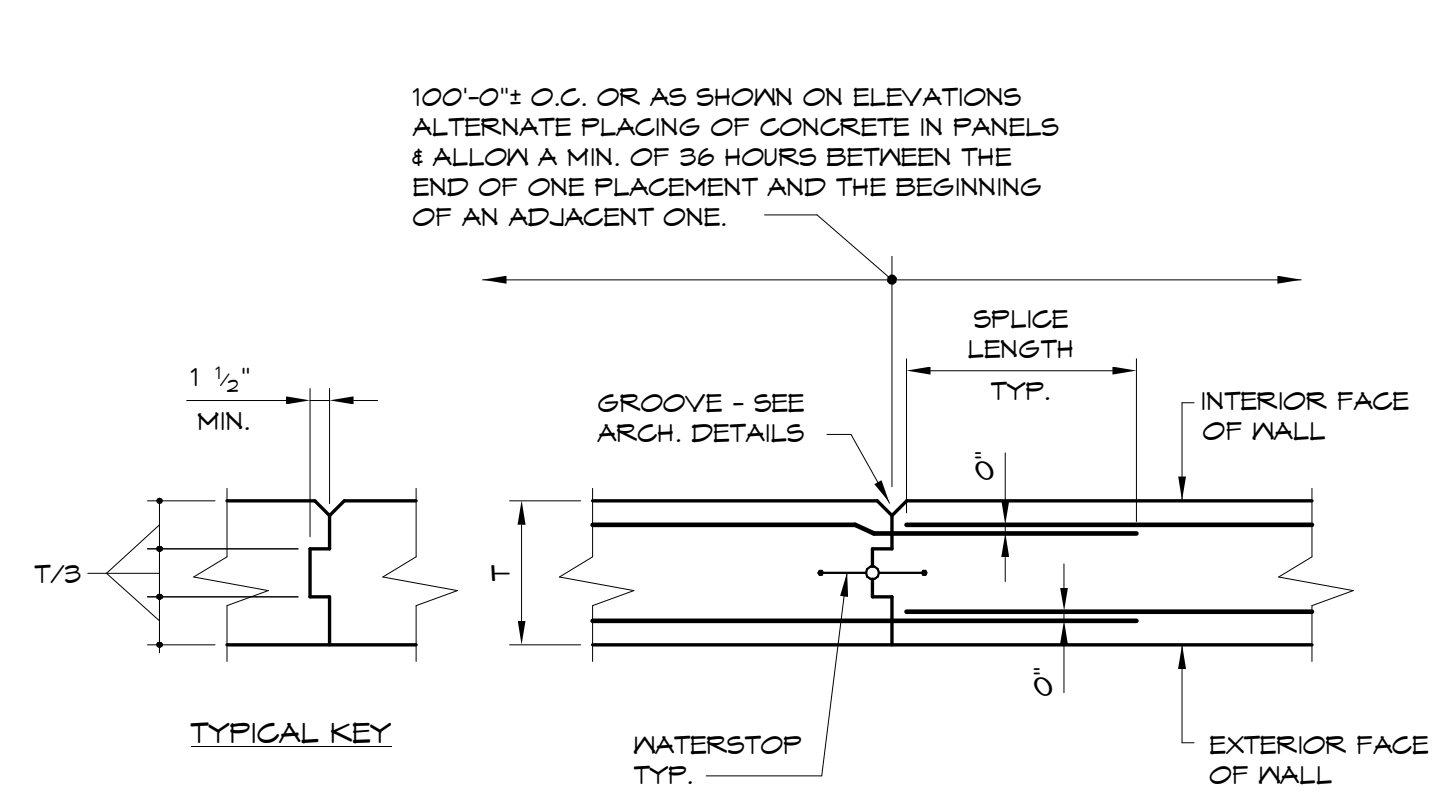
**TYPICAL WALL SECTION AT DOORWAY
TOP ELEVATION = TOP OF SLAB ELEVATION**



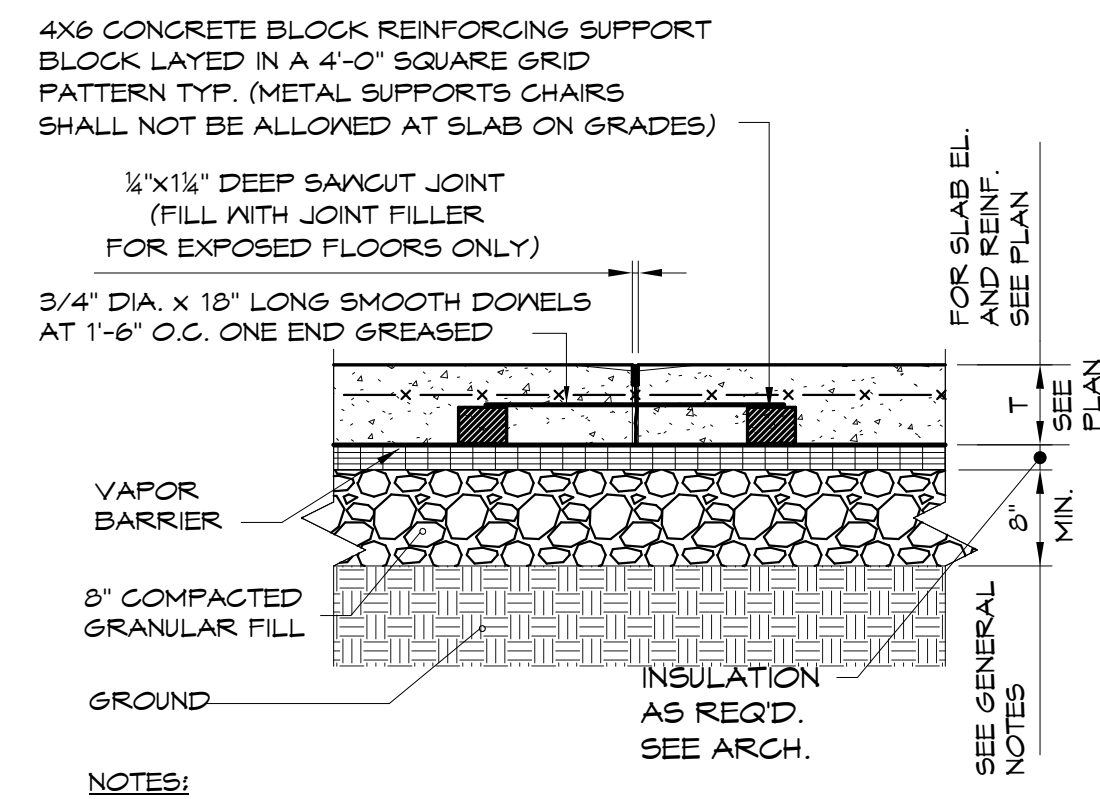
**TYPICAL WALL SECTION AT DOORWAY
W/ SIDEWALK OR PLATFORM**



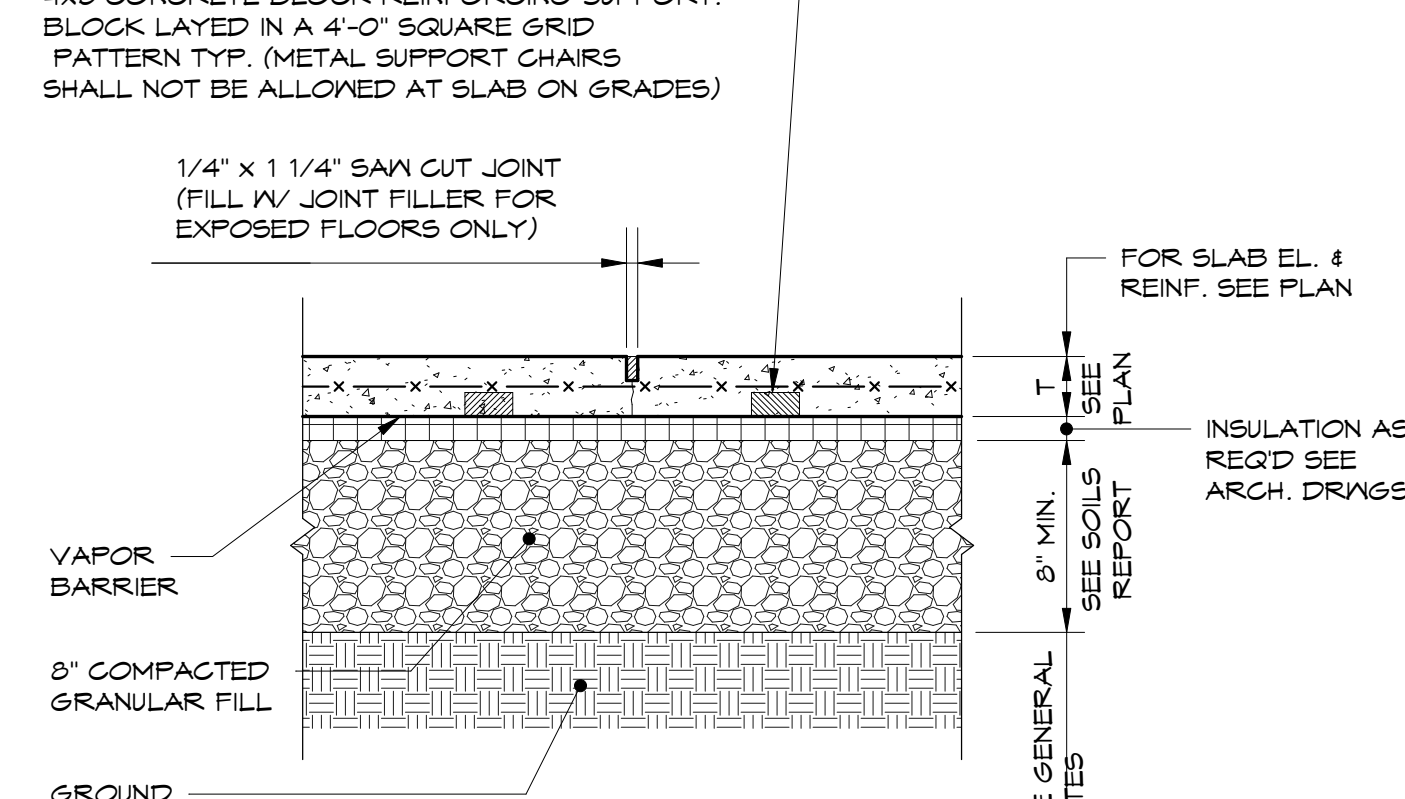
TYPICAL ELEVATION AT DOORS
NOTE: REFER TO TYPICAL WALL SECTION AT DOORWAY



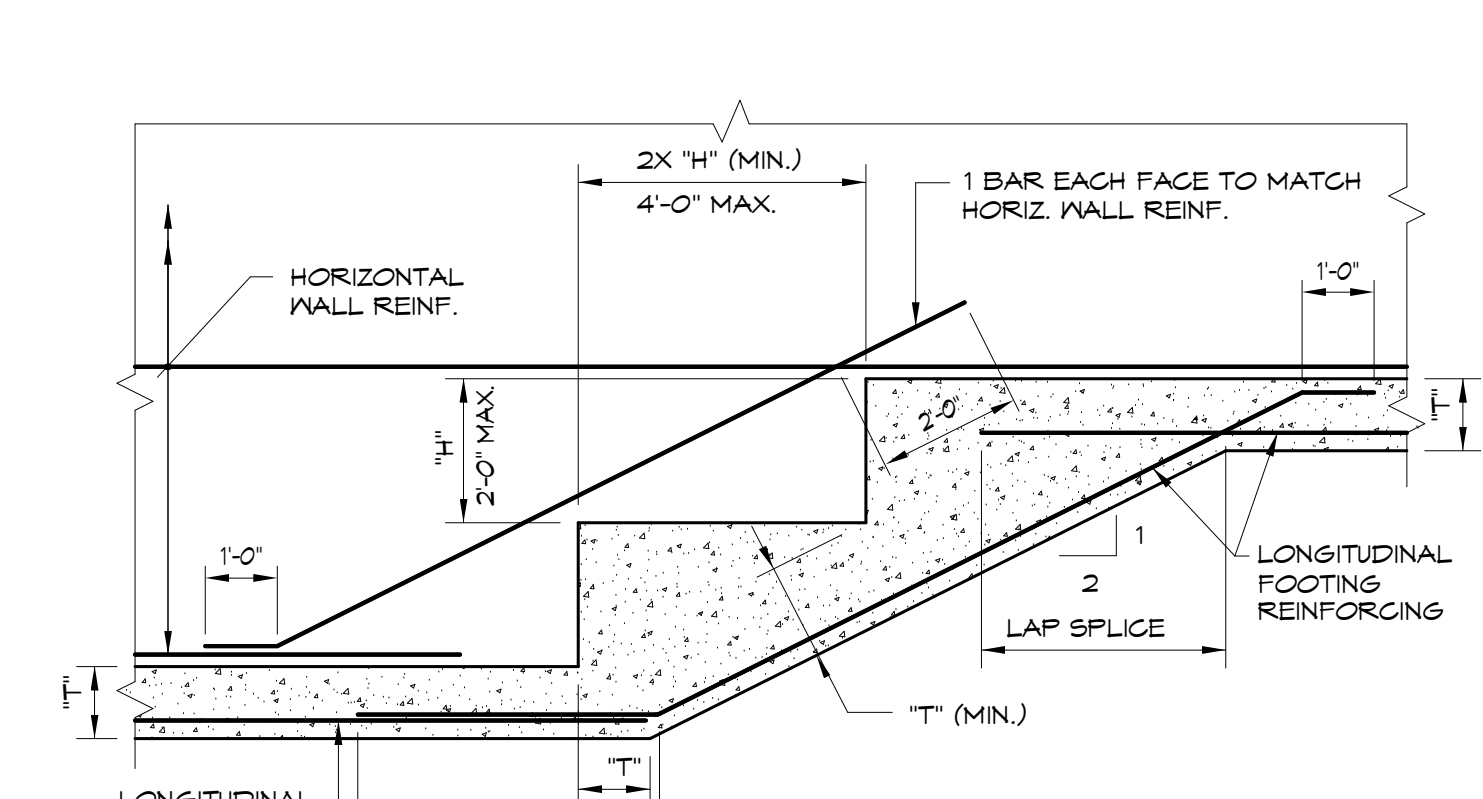
CONSTRUCTION JOINT IN CONCRETE WALL



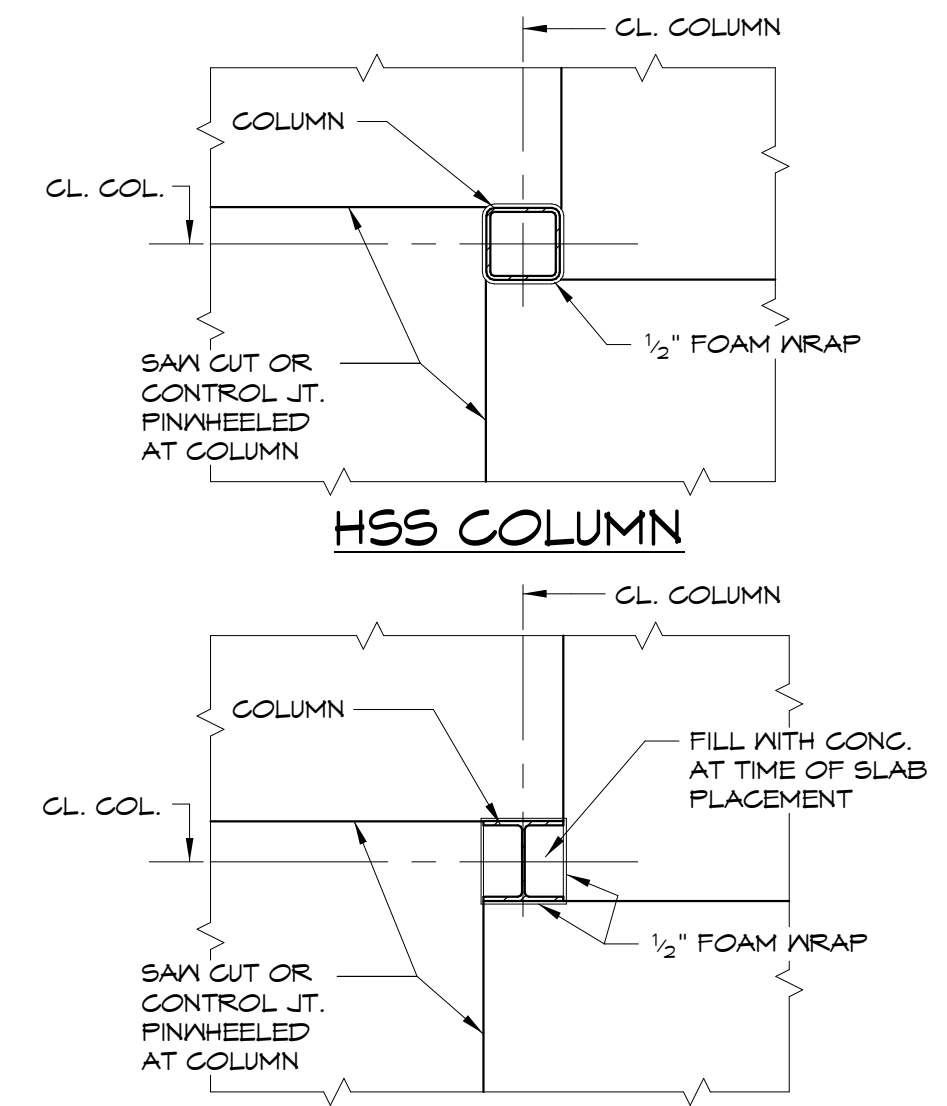
**TYPICAL SLAB ON GRADE
CONSTRUCTION JOINT DETAIL**



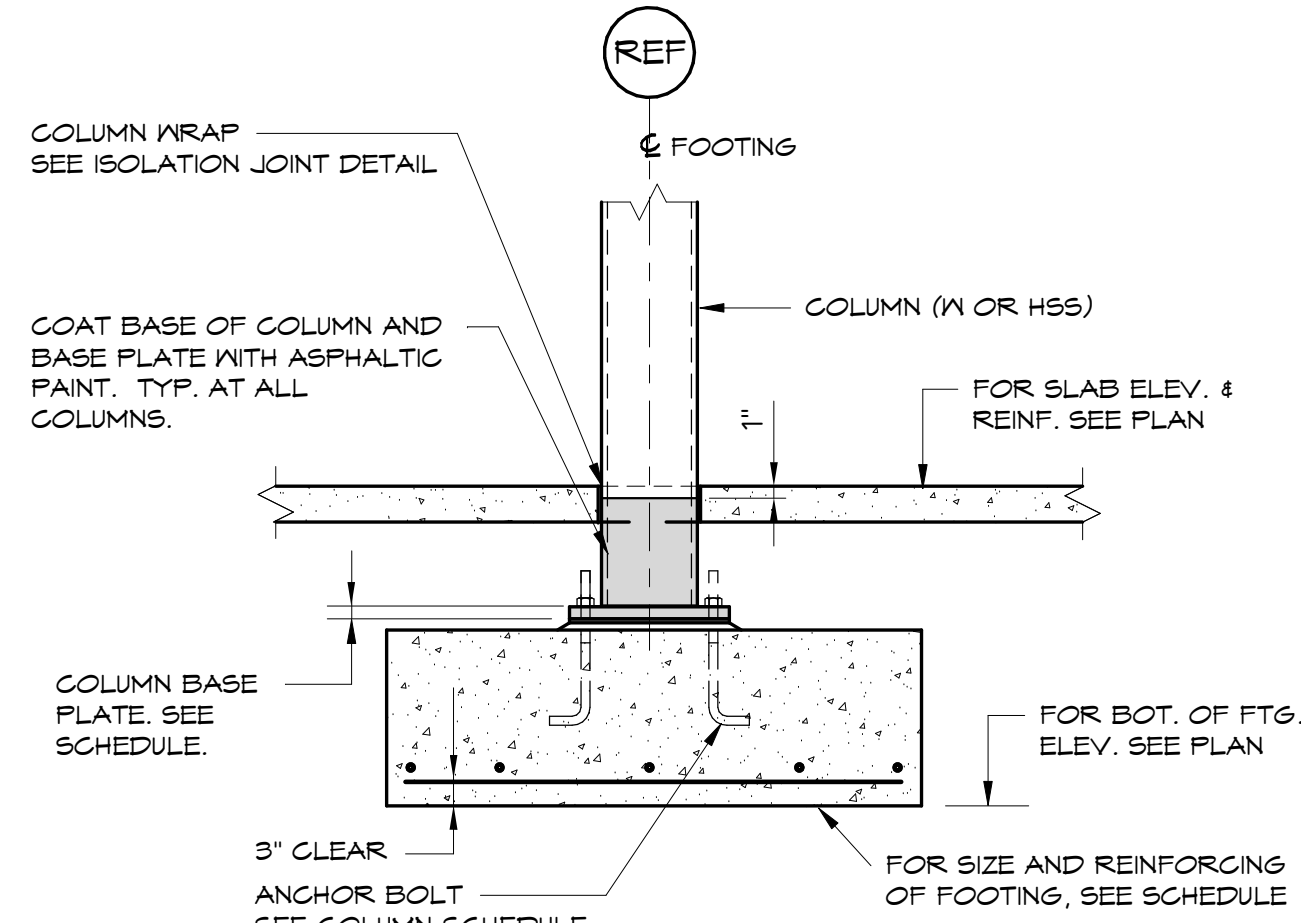
**TYPICAL SAW CUT
CONTROL JOINT DETAIL**



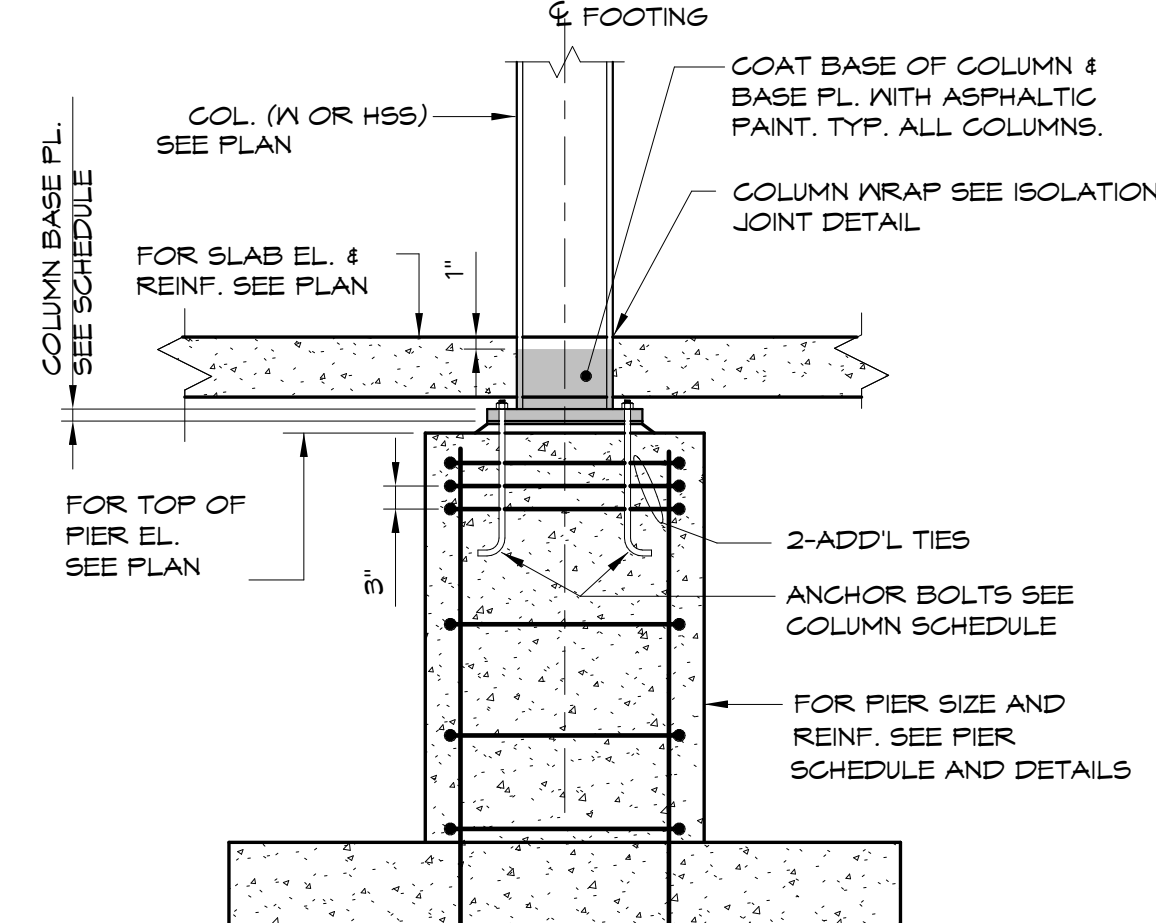
CONTINUOUS STEPPED WALL FOOTING



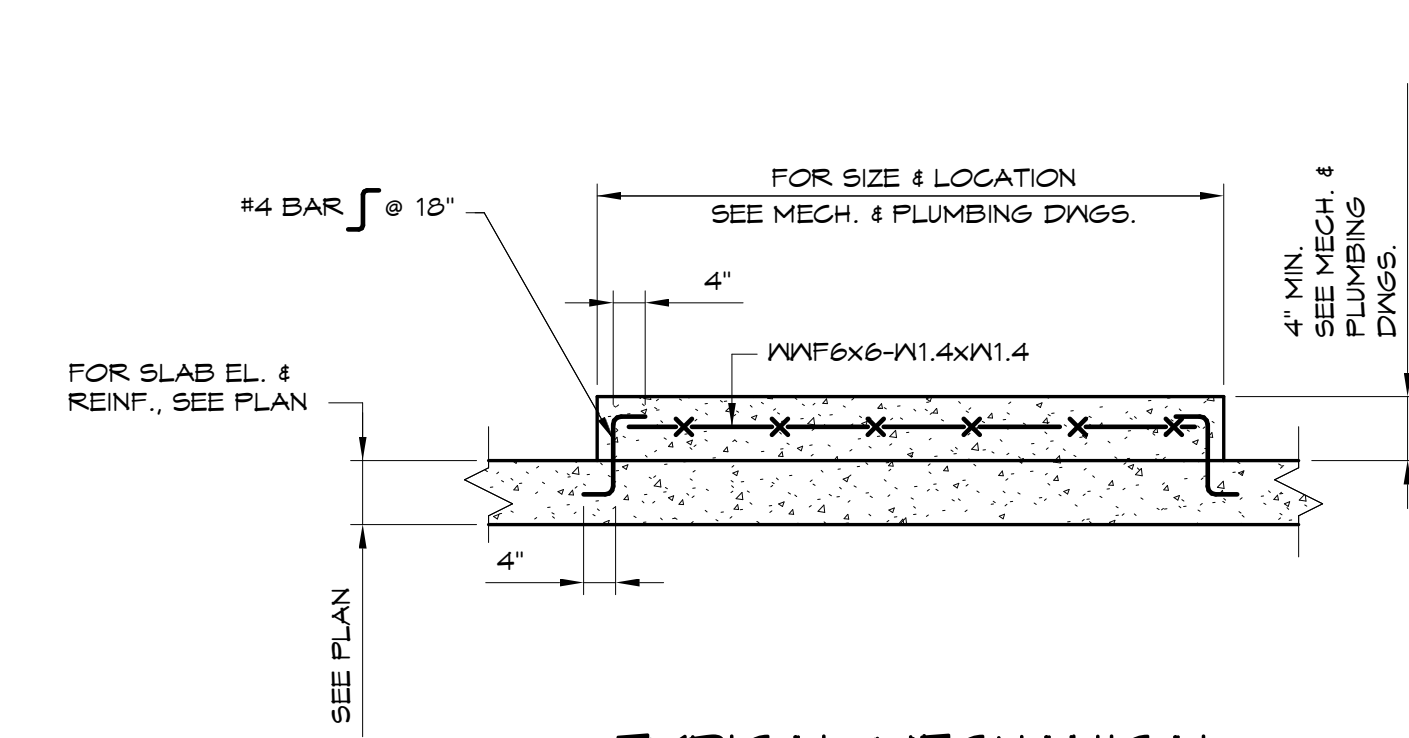
ISOLATION JOINT DETAIL AT COLUMNS



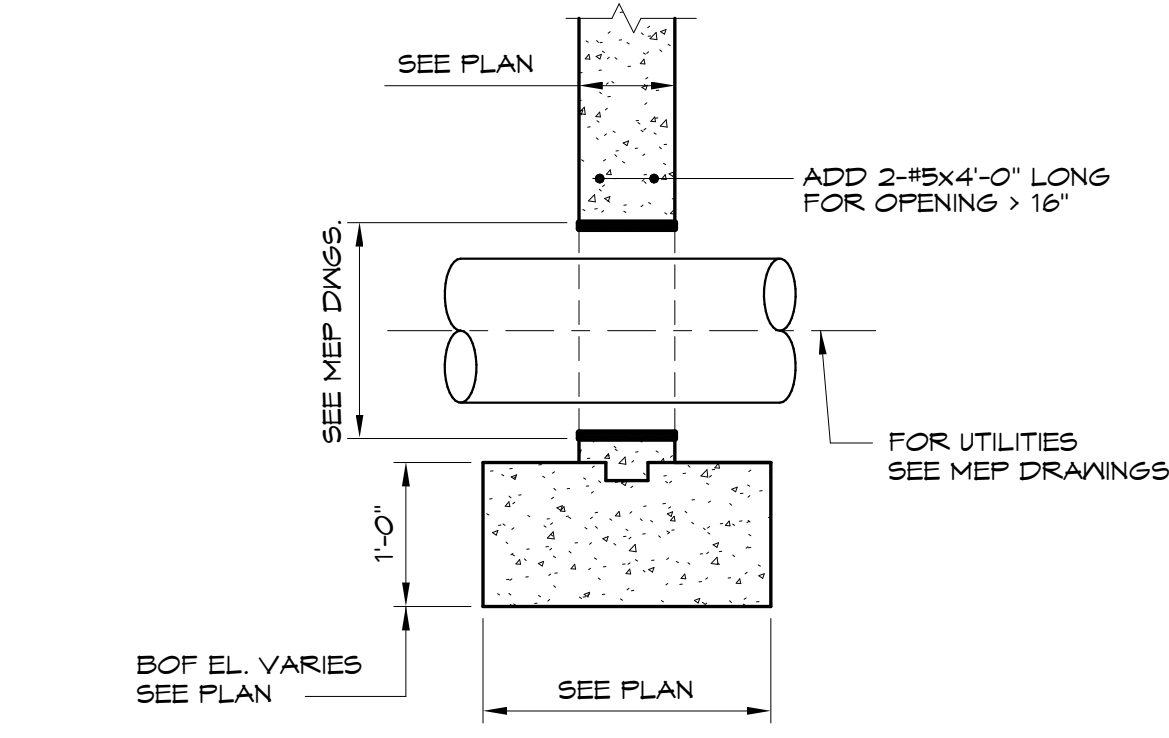
INTERIOR COLUMN FOOTING DETAIL



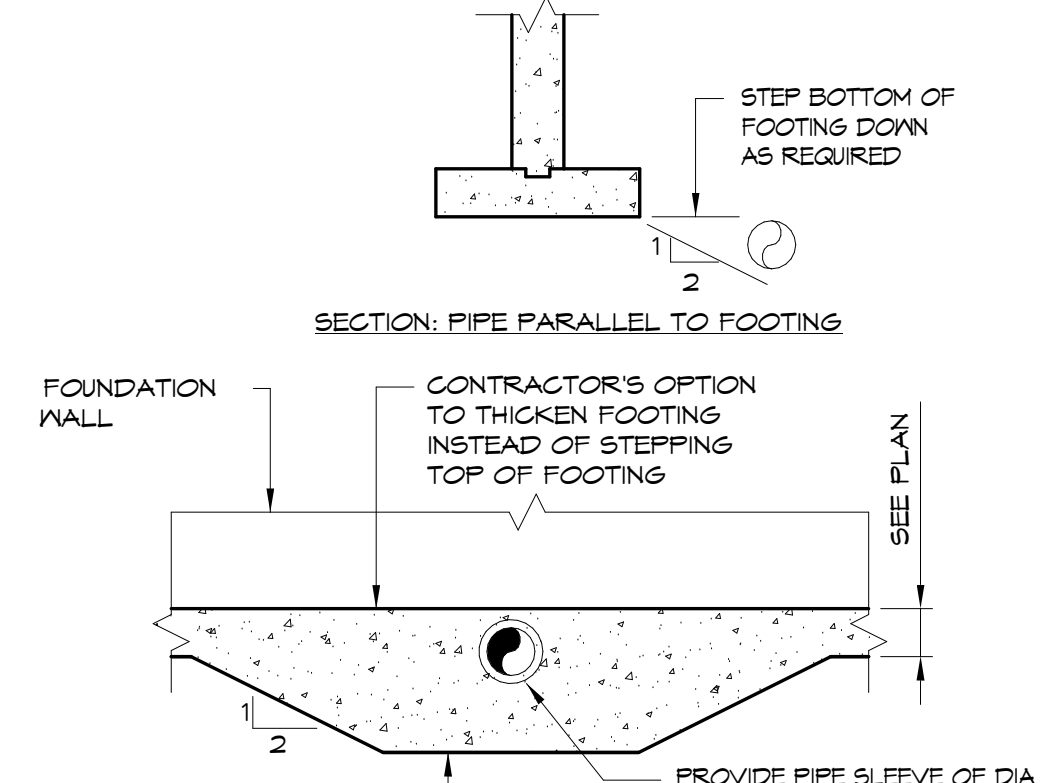
**INTERIOR FOOTING WITH
COLUMN PIER DETAIL**



**TYPICAL MECHANICAL
EQUIPMENT PAD**



TYPICAL UTILITY SLEEVE
NOTE: STEP FOOTING DOWN AS REQUIRED TO ACCOMMODATE UTILITY SLEEVE ELEVATION.



TYPICAL FOOTING DETAILS AT PIPE

STATE OF MAINE
RMANTAS M. VEITAS
No. 9477
LICENSED PROFESSIONAL ENGINEER

Prepared For: **EssexNorth Portland LLC**
P.O. Box 394
Topsfield, MA 01983

Consultant: **VEITAS VEITAS architects**
680 Granite Street, Suite 101
Branford, Massachusetts 02824
TEL: 781-843-2863 FAX: 781-849-2055

Architect: **ARCHETYPE architects**
48 Union Wharf Portland, Maine 04101
(207) 772-6022 Fax (207) 772-4056

Project: **THAMES STREET CONDOMINIUM**
20 Thames Street, Portland Maine

Revisions:
5 | 10/11/17 | Addendum #3

Date: **JULY 2017**

Scale: **As indicated**

TYPICAL DETAILS

S2.02