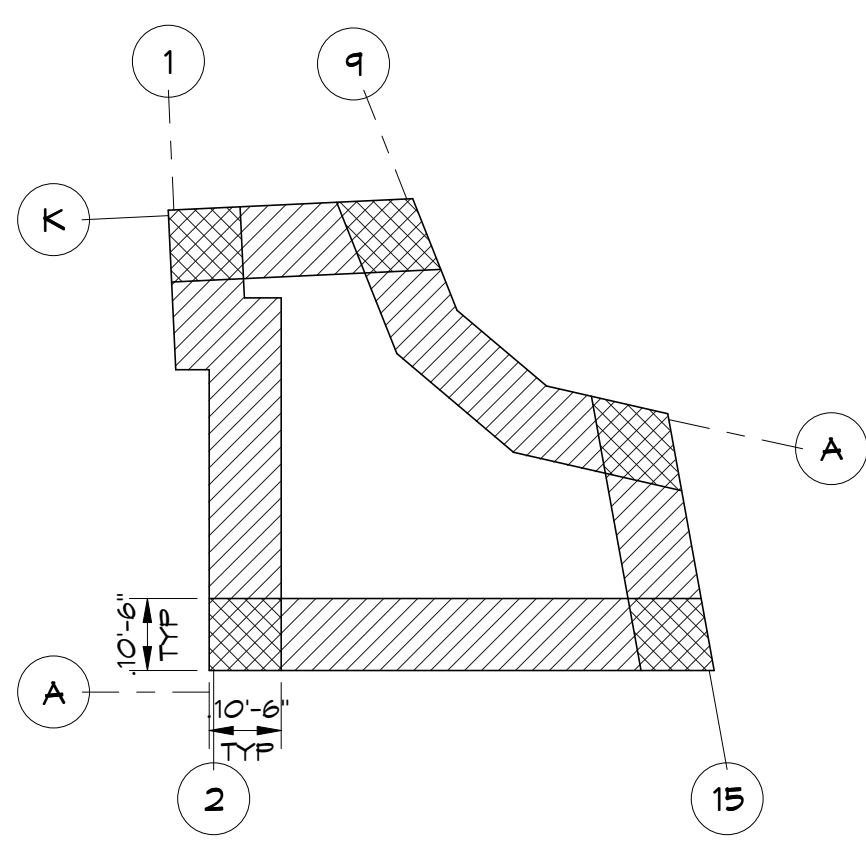
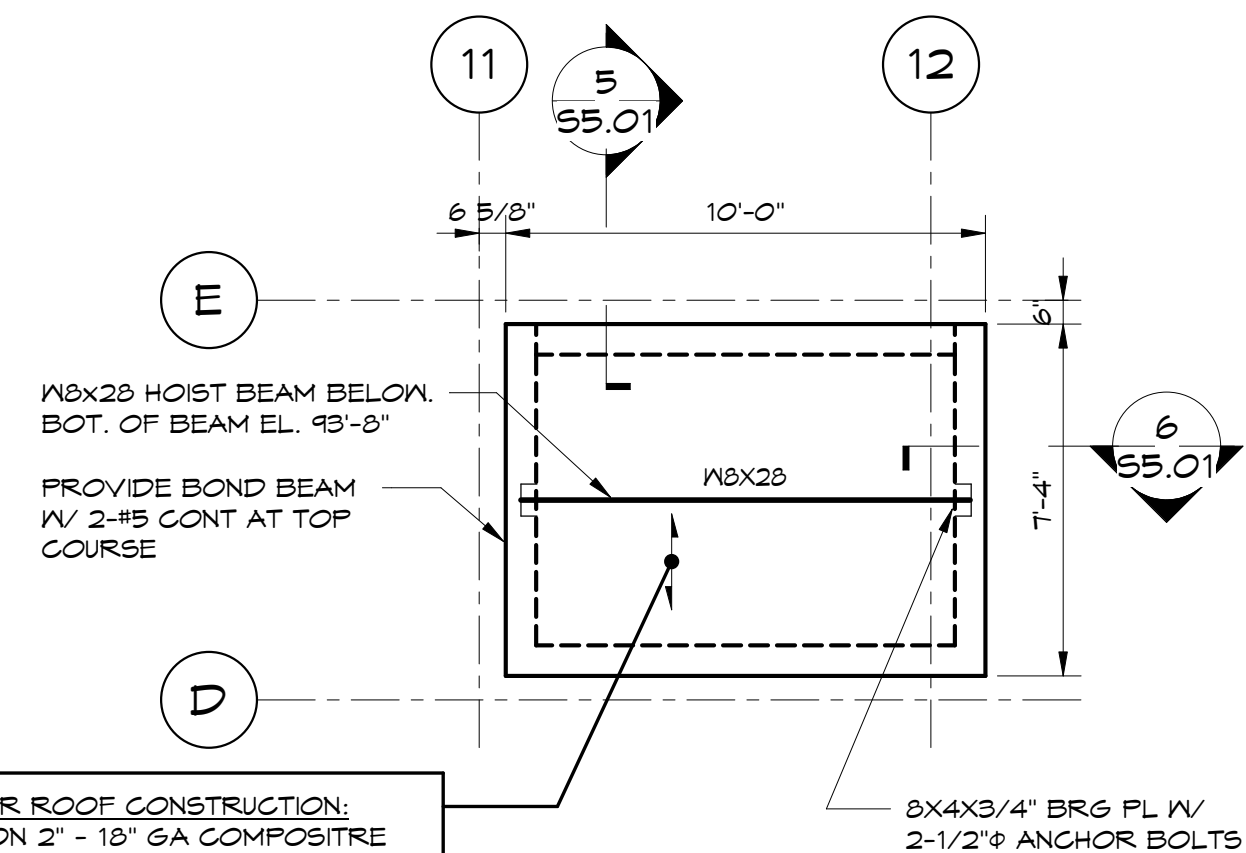


1 ROOF FRAMING PLAN
1/8" = 1'-0"

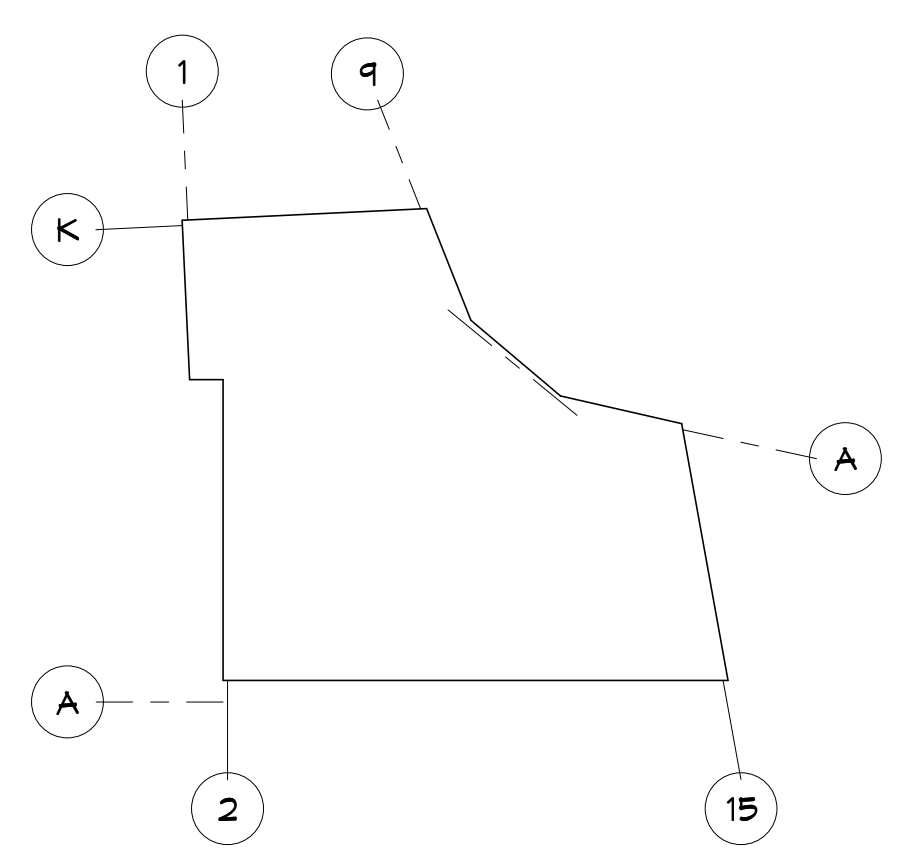
ELEVATOR ROOF CONSTRUCTION:
4" N/C ON 2" - 18" GA COMPOSITE DECK (TOTAL THK = 8 1/2") REINF. W/ WAF 6X6-1/2 5W/2.9 TOP OF CONC. SLAB EL. 91'-9 1/2"

ELEVATOR ROOF FRAMING PLAN



ROOF UPLIFT KEY PLAN

- NOTES:**
- INDICATES AREA WITH 51 PSF NET UPLIFT ON JOISTS
 - INDICATES AREA WITH 31 PSF NET UPLIFT ON JOISTS
 - INDICATES AREA WITH 11 PSF NET UPLIFT ON JOISTS



ROOF DIAPHRAGM KEY PLAN

- NOTES:**
- USE 36/4 PATTERN
 - FRAME FASTENING: 5/8" WELDS
 - SIDE FASTENING: 1 STITCH #10 SCREWS (BULDEX) @ 18" O.C.
 - 1 1/2" DP. - 20 GA. DECK

- ROOF FRAMING NOTES:**
1. FOR TYPICAL DETAILS AND GENERAL NOTES SEE DWG. S2.01 THRU S2.04.
 2. TOP OF STEEL (BEAMS AND JOIST GIRDERS) SHALL BE AS INDICATED ON PLAN.
 3. (+ 0") INDICATES DEVIATION FROM TOP OF STEEL ELEVATION OR JOIST BEARING ELEVATION.
 4. "E.O.D." INDICATES EDGE OF DECK DIMENSION FROM COLUMN GRIDLINE OR " OF BEAM IF NO GRIDLINE IS INDICATED.
 5. "BRACE X" INDICATES A BRACED FRAME. SEE DRAWINGS S3.04 4 S3.05 FOR BRACE ELEVATIONS AND DETAILS.
 6. "TOS EL." INDICATES TOP OF STEEL ELEVATION. (TOP OF JOIST 2 1/2" ABOVE TOS ELEVATION UNO).
 7. "TOJ EL." INDICATES TOP OF JOIST ELEVATION.
 8. "BOS EL." INDICATES BOTTOM OF STEEL ELEVATION.
 9. ——— INDICATES SPAN OF METAL DECK.
 10. "JH" INDICATES BEAM ELEVATION AT JOIST HEIGHT. (TOP OF STEEL BEAM = TOP OF JOIST ELEVATION).
 11. ——— INDICATES UPLIFT (HORIZONTAL) BRIDGING AT FIRST PANEL POINT OF BOTTOM CHORD OF JOISTS.
 12. ——— INDICATES HORIZONTAL BRIDGING OF TOP AND BOTTOM CHORD OF JOISTS.
 13. ——— INDICATES (WELDED) CROSS BRIDGING OF JOISTS.
 14. [xxk] INDICATES CONCENTRATED LOAD IN KIPS ON JOIST.
 15. [xxx] INDICATES ADDITIONAL CONCENTRATED LOAD IN KIPS AT JOIST GIRDER PANEL POINT.
 16. PROVIDE RUDDLE WELDS AND SIDELAP FASTENERS PER ROOF DIAPHRAGM KEY PLAN.
 17. PROVIDE TIE JOIST DETAIL AT ALL JOISTS THAT FRAME INTO COLUMNS OR ARE DESIGNATED "TJ".
 18. ALL MECHANICAL AND ELECTRICAL CONDUITS, PIPING, AND HUNG SOFFITS SHALL BE SUSPENDED FROM STEEL BEAMS, JOIST GIRDERS OR JOISTS. THESE ITEMS SHALL NOT BE HUNG FROM THE METAL DECK. THIS SUPPLEMENTARY FRAMING SHALL BE SUPPLIED BY THE RESPECTIVE TRADES.
 19. LOCATIONS AND DIMENSIONS SHOWN FOR RTUS AND OPENINGS ARE FROM FACE TO FACE OF ANGLES OR FACE OF ANGLES TO CENTER OF JOIST. THE SIZE AND LOCATION OF ROOF OPENING FRAMES SHALL BE VERIFIED AND COORDINATED BY THE GENERAL CONTRACTOR AND THE MECHANICAL CONTRACTOR SHALL VERIFY ALL ROOF OPENINGS BEFORE SUBMITTING SHOP DRAWINGS. REFER TO "ROOF OPENING AND ROOF TOP UNIT SUPPORT" ON DRAWINGS S2.05 FOR FRAMING INFORMATION.
 20. JOIST BEARING ELEVATIONS TO BE SUPPLIED ON ERECTION PLAN BY JOIST MANUFACTURER.
 21. [---] INDICATES DRAG FORCE IN TOP CHORD OF JOIST GIRDER OR WIDE FLANGE BEAM.
 22. JOISTS SHALL BE DESIGNED FOR WIND UPLIFT AS INDICATED ON ROOF UPLIFT KEY PLAN.
 23. * - DENOTES BEAM LOCATIONS TO BE COORDINATED WITH PURCHASED MECHANICAL EQUIPMENT.

Prepared For: **EssexNorth Portland LLC**
P.O. Box 394
Topsfield, MA 01983

Consultant: **VEITAS VEITAS engineers**
680 Centre Street, Suite 101
Braintree, Massachusetts 02184
TEL: 781.842.2863 FAX: 781.842.2055

Architect: **ARCHETYPE architects**
48 Union Wharf Portland, Maine 04101
(207) 772-6022 Fax (207) 772-4056

Project: **THAMES STREET CONDOMINIUM**
20 Thames Street, Portland Maine

Revisions:
1 06/30/17 Steel Bid - Addendum #1
2 07/21/17 BID SET
4 08/15/17 Addendum #2
5 10/11/17 Addendum #3

Date: **JULY 2017**

Scale: **As indicated**

ROOF FRAMING PLAN

S1.06