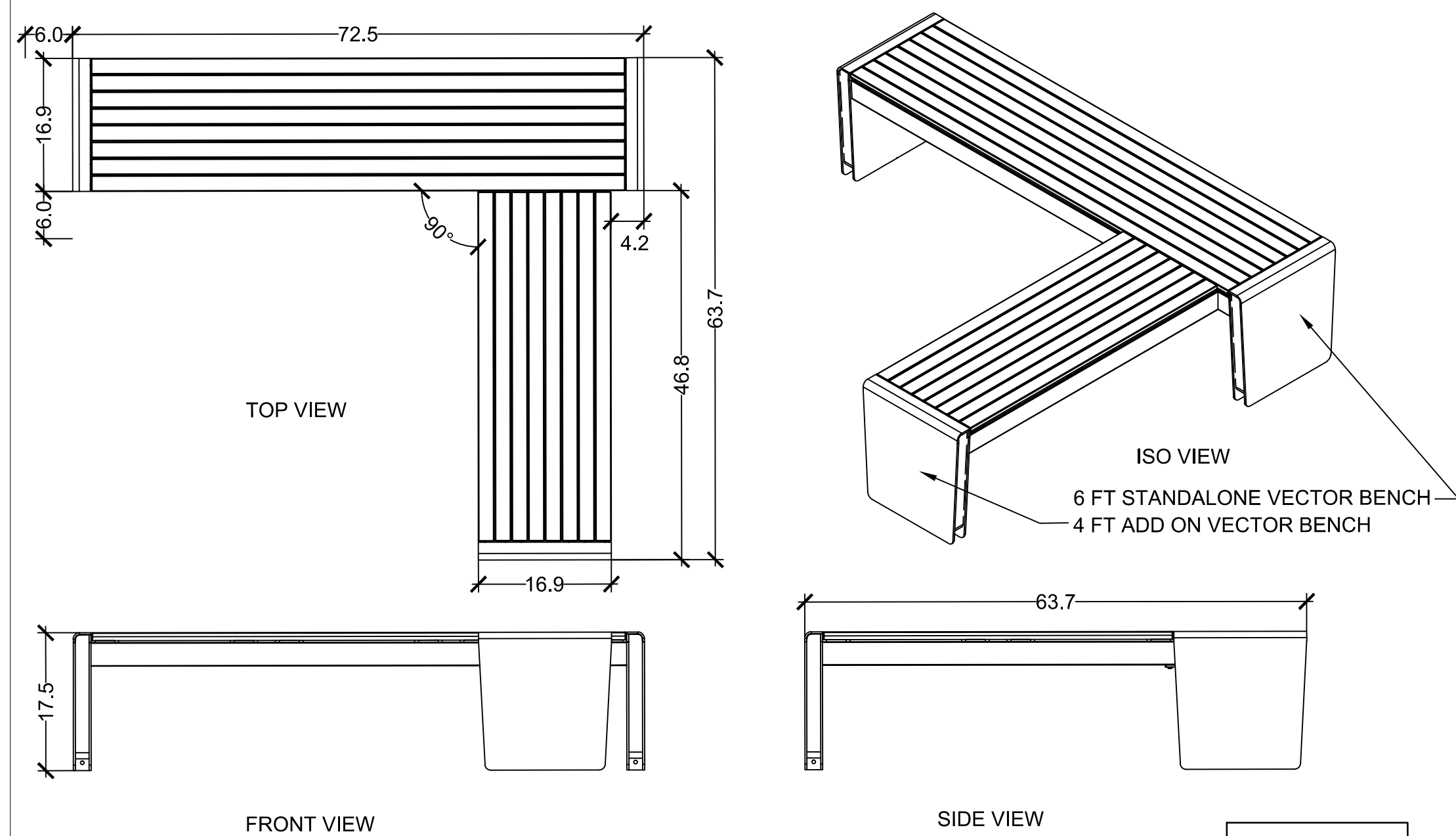


UNLESS OTHERWISE SPECIFIED, DIMENSIONS ARE IN INCHES		<b>FORMS+SURFACES</b> 30 Pine Street, Pittsburgh, PA 15223 Tel (412) 781-9003 Fax (412) 781-7840	
TOLERANCES (UNLESS OTHERWISE SPECIFIED):	NAME	DATE	DESCRIPTION:
FRACTIONAL: ± 1/32	DWN	MGJ	02/24/2017
ANGULAR/BEND: ± 1°	L SHAPE VECTOR BENCH, 4FT STANDALONE		
TWO PLACE DECIMAL ± 0.030	WITH 2FT ADD ON AT 90 DEGREE		
THREE PLACE DECIMAL ± 0.020	WITH LED UNDER MOUNT ACCENT LIGHT		
MATERIAL: - JATOBA/AL	CHK		
FINISH: - OIL/PC	DO NOT SCALE DRAWING		
WEIGHT: -	PROPRIETARY AND CONFIDENTIAL		
SOURCE: -	THE INFORMATION CONTAINED IN THIS DRAWING IS THE SOLE PROPERTY OF FORMS + SURFACES. ANY REPRODUCTION IN PART OR AS A WHOLE WITHOUT WRITTEN PERMISSION IS PROHIBITED.		
SCALE: - N.T.S	SIZE	DWG. NO.	REV SHEET
	B		0 1 OF 1



UNLESS OTHERWISE SPECIFIED, DIMENSIONS ARE IN INCHES		<b>FORMS+SURFACES</b> 30 Pine Street, Pittsburgh, PA 15223 Tel (412) 781-9003 Fax (412) 781-7840	
TOLERANCES (UNLESS OTHERWISE SPECIFIED):	NAME	DATE	DESCRIPTION:
FRACTIONAL: ± 1/32	DWN	MGJ	02/24/2017
ANGULAR/BEND: ± 1°	L SHAPE VECTOR BENCH, 6FT STANDALONE		
TWO PLACE DECIMAL ± 0.030	WITH 4FT ADD ON AT 90 DEGREE		
THREE PLACE DECIMAL ± 0.020	WITH LED UNDER MOUNT ACCENT LIGHT		
MATERIAL: - JATOBA/AL	CHK		
FINISH: - OIL/PC	DO NOT SCALE DRAWING		
WEIGHT: -	PROPRIETARY AND CONFIDENTIAL		
SOURCE: -	THE INFORMATION CONTAINED IN THIS DRAWING IS THE SOLE PROPERTY OF FORMS + SURFACES. ANY REPRODUCTION IN PART OR AS A WHOLE WITHOUT WRITTEN PERMISSION IS PROHIBITED.		
SCALE: - N.T.S	SIZE	DWG. NO.	REV SHEET
	B		0 1 OF 1

1 BENCH

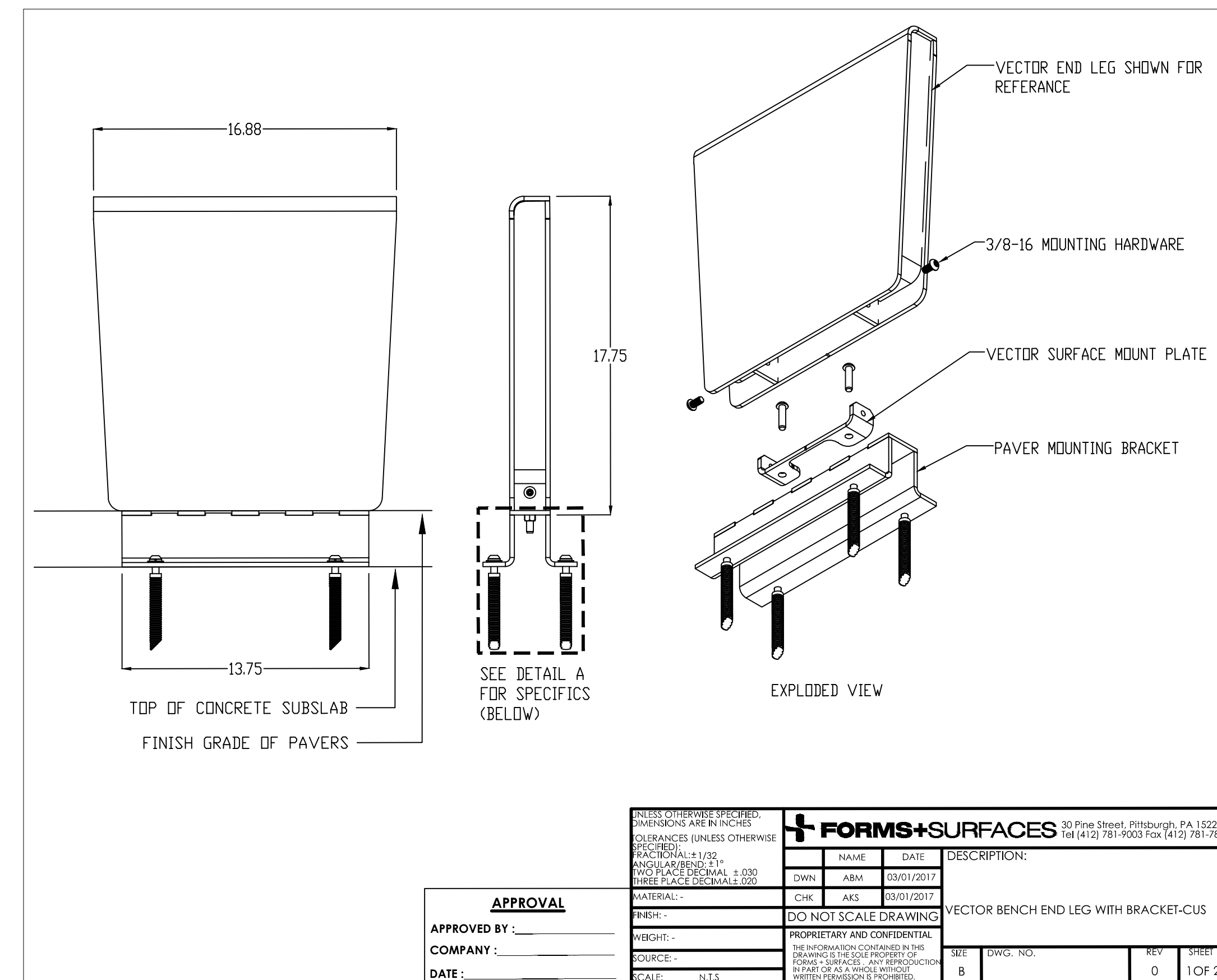
VECTOR BENCH SPEC

SALES REPRESENTATIVE: DAN DELONGCHAMP  
DIRECT NUMBER: 617-780-4134  
EMAIL: DANIEL.DELONGCHAMP@FORMS-SURFACES.COM

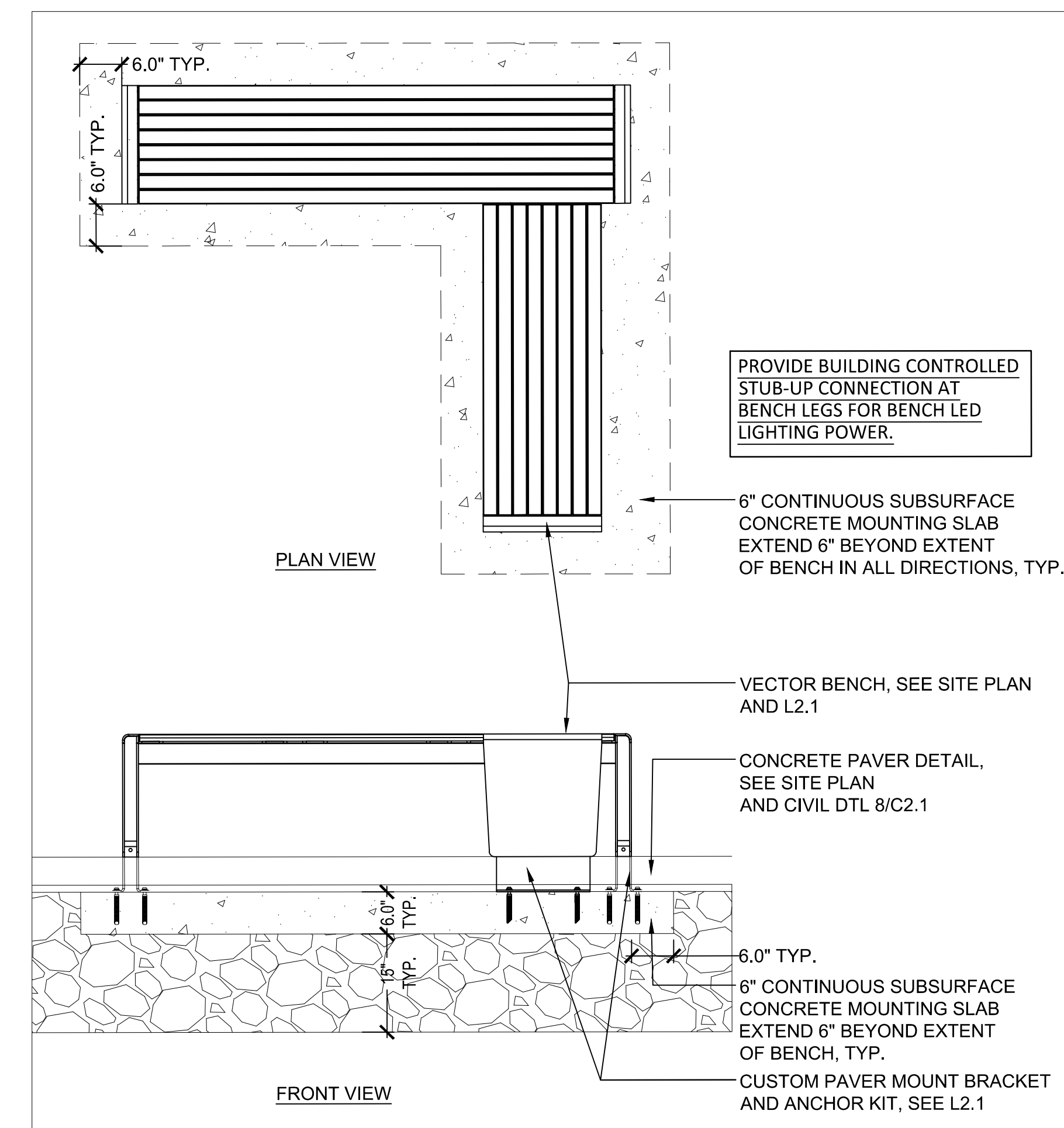
1. 'L' SHAPE VECTOR BENCHES SHALL BE:  
TYPE A: 4' STANDALONE WITH 2' ADD-ON AT 90° (2 REQ'D).  
TYPE B: 6' STANDALONE WITH 4' ADD-ON AT 90° (1 REQ'D).

ALL BENCH COMBINATIONS SHALL BE SET AT 90° TO EACH OTHER, AS SHOWN ON L1.0 & L2.1.

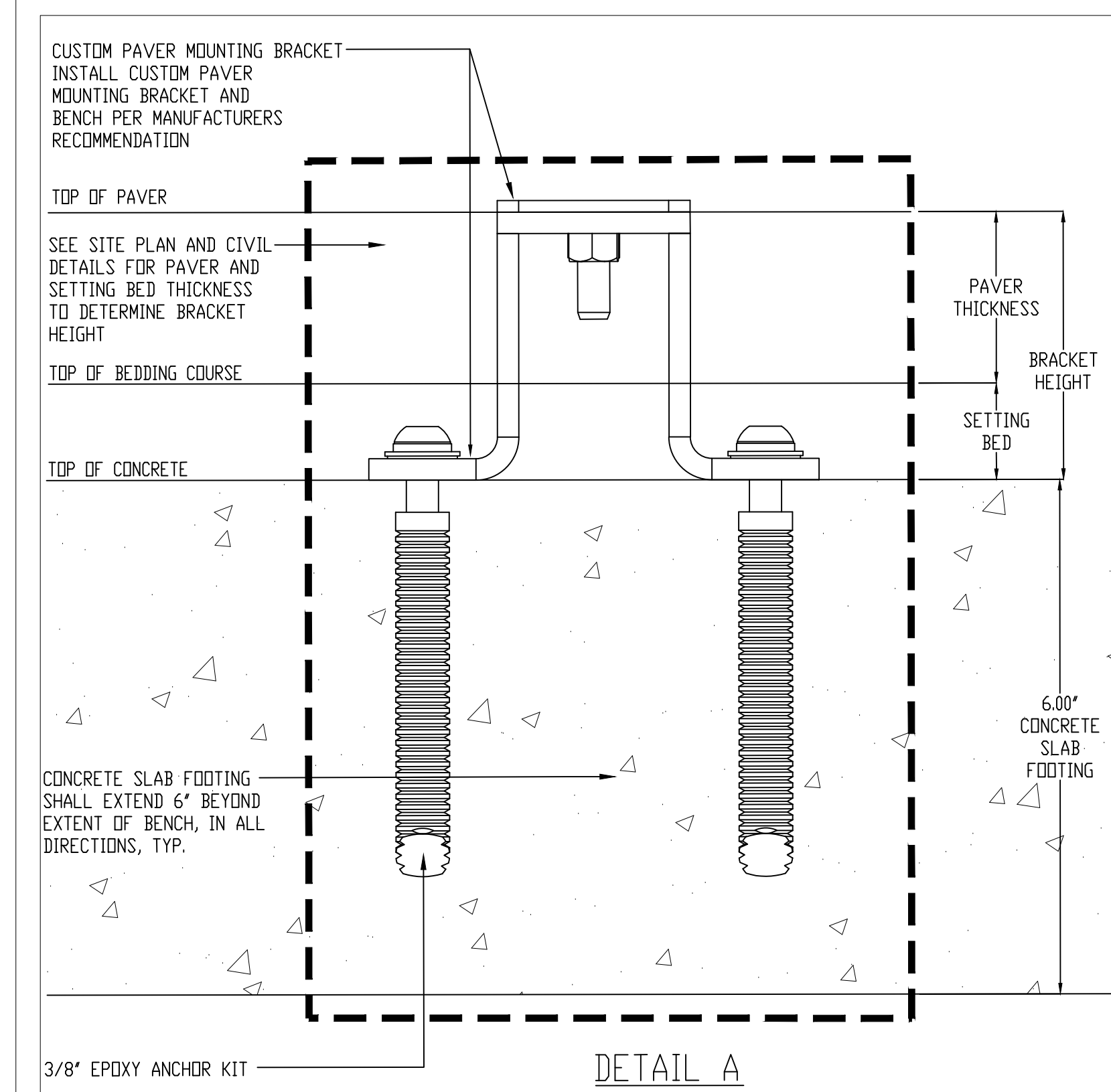
2. BENCH FRAME: SHALL BE POWDER COATED ALUMINUM, COLOR TO BE SLATE.
3. BENCH TOP: SHALL BE FSC 100% JATOBA HARDWOOD SLATS WITH PENOFIN HARDWOOD FORMULA "TRANSPARENT NATURAL". NO SEAT BACK, ARM RESTS, OR SEAT DIVIDERS.
4. BENCH SIDE PANEL: NONE.
5. BENCH LED UNDER MOUNT ACCENT LIGHT: YES - 3000K WARM WHITE.  
**PROVIDE BUILDING CONTROLLED STUB-UP CONNECTION AT BENCH LEGS FOR BENCH LED LIGHTING POWER.**
6. BENCH SHALL BE SURFACE MOUNTED PER MANUFACTURER'S RECOMMENDATIONS WITH MANUFACTURER SUPPLIED HARDWARE TO SUBSURFACE CONCRETE SLAB UTILIZING A CUSTOM PAVER MOUNT BRACKET AS SHOWN ON L2.1.
7. CONTRACTOR SHALL SUBMIT SHOP DRAWINGS OF BENCH FOR APPROVAL.



UNLESS OTHERWISE SPECIFIED, DIMENSIONS ARE IN INCHES		<b>FORMS+SURFACES</b> 30 Pine Street, Pittsburgh, PA 15223 Tel (412) 781-9003 Fax (412) 781-7840	
TOLERANCES (UNLESS OTHERWISE SPECIFIED):	NAME	DATE	DESCRIPTION:
FRACTIONAL: ± 1/32	DWN	AKS	03/01/2017
ANGULAR/BEND: ± 1°	VECTOR BENCH END LEG WITH BRACKET-CUS		
TWO PLACE DECIMAL ± 0.030	DO NOT SCALE DRAWING		
THREE PLACE DECIMAL ± 0.020	PROPRIETARY AND CONFIDENTIAL		
MATERIAL: -	THE INFORMATION CONTAINED IN THIS DRAWING IS THE SOLE PROPERTY OF FORMS + SURFACES. ANY REPRODUCTION IN PART OR AS A WHOLE WITHOUT WRITTEN PERMISSION IS PROHIBITED.		
FINISH: -	SIZE	DWG. NO.	REV SHEET
WEIGHT: -	B		0 1 OF 2
SOURCE: -			
SCALE: - N.T.S			



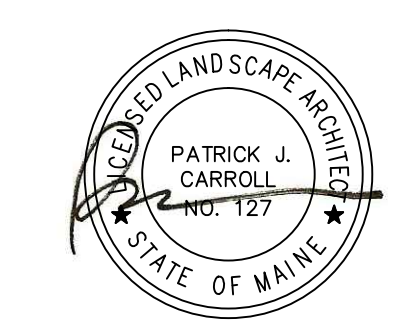
2 BENCH ATTACHMENT



Project:  
**20 THAMES STREET RESIDENTIAL CONDOMINIUM**  
20 THAMES STREET  
PORTLAND, MAINE

Owner:  
ESSEXNORTH 20 THAMES LLC  
P.O. BOX 1383  
SANIBEL, FL 33957

Applicant:  
ESSEXNORTH PORTLAND LLC  
P.O. BOX 394  
TOPSFIELD, MA 01983



LANDSCAPE DETAILS

No.	Revision/Issue	Date
4	BID SET	07.14.17
3	PROGRESS SET	06.26.17
2	FINAL CITY SUBMISSION	06.09.17
1	CITY SUBMISSION	03.09.17

Design by:	MAP/PC	Checked by:	PC
Drawn by:	MAP	Approved by:	PC
Project:		Date:	MARCH 1, 2016

Sheet No:  
**L2.1**  
Sheet 13 of 23