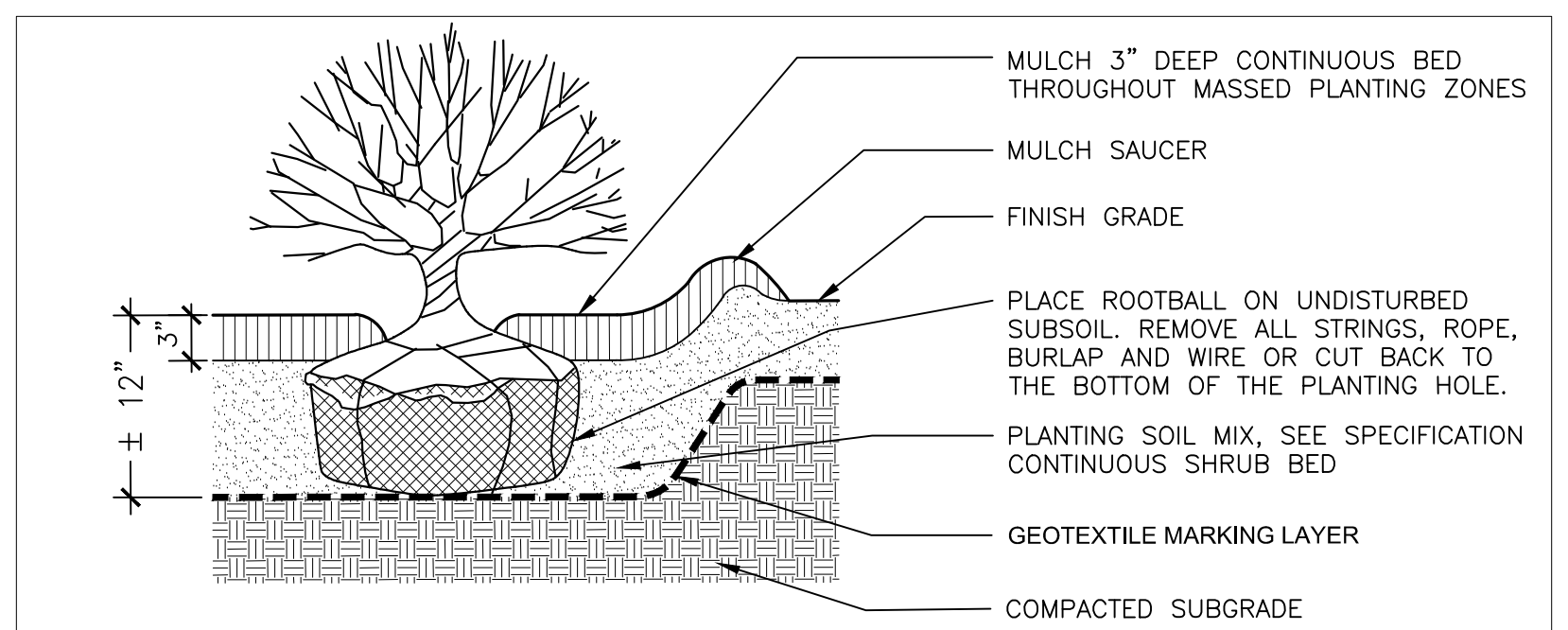
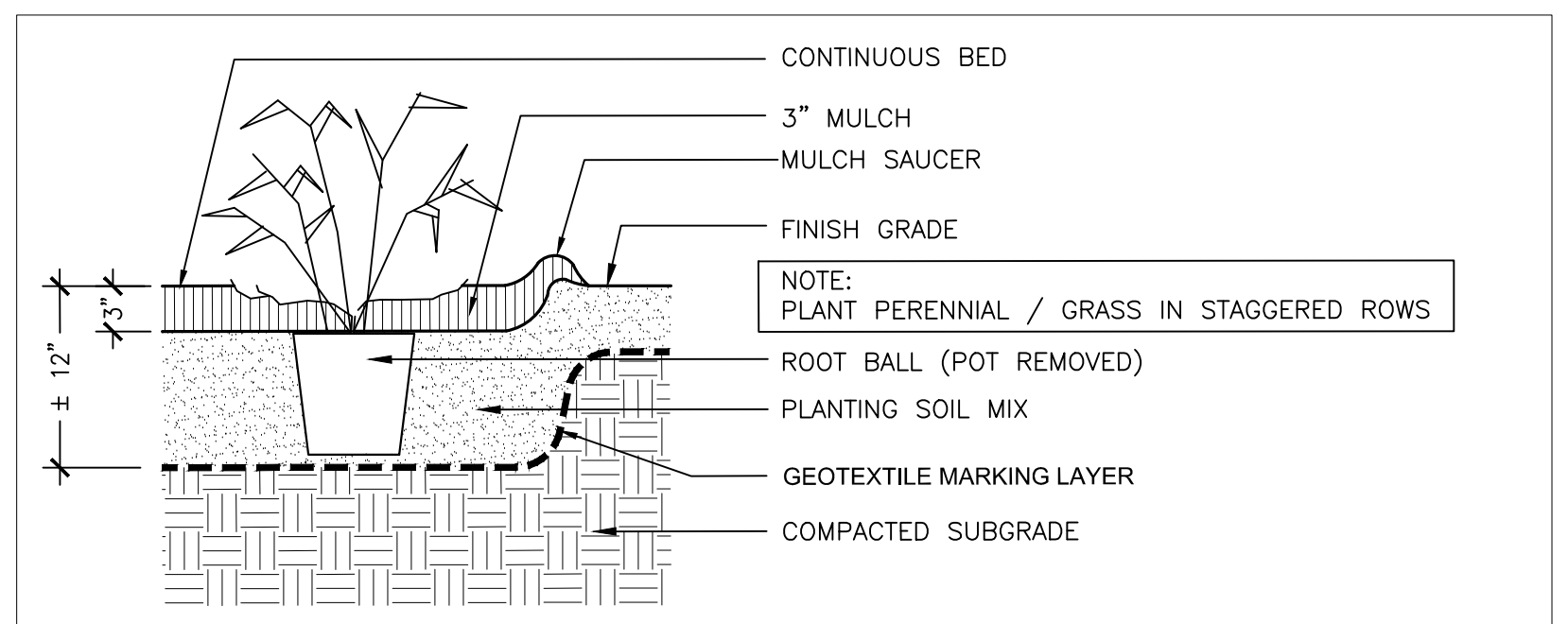


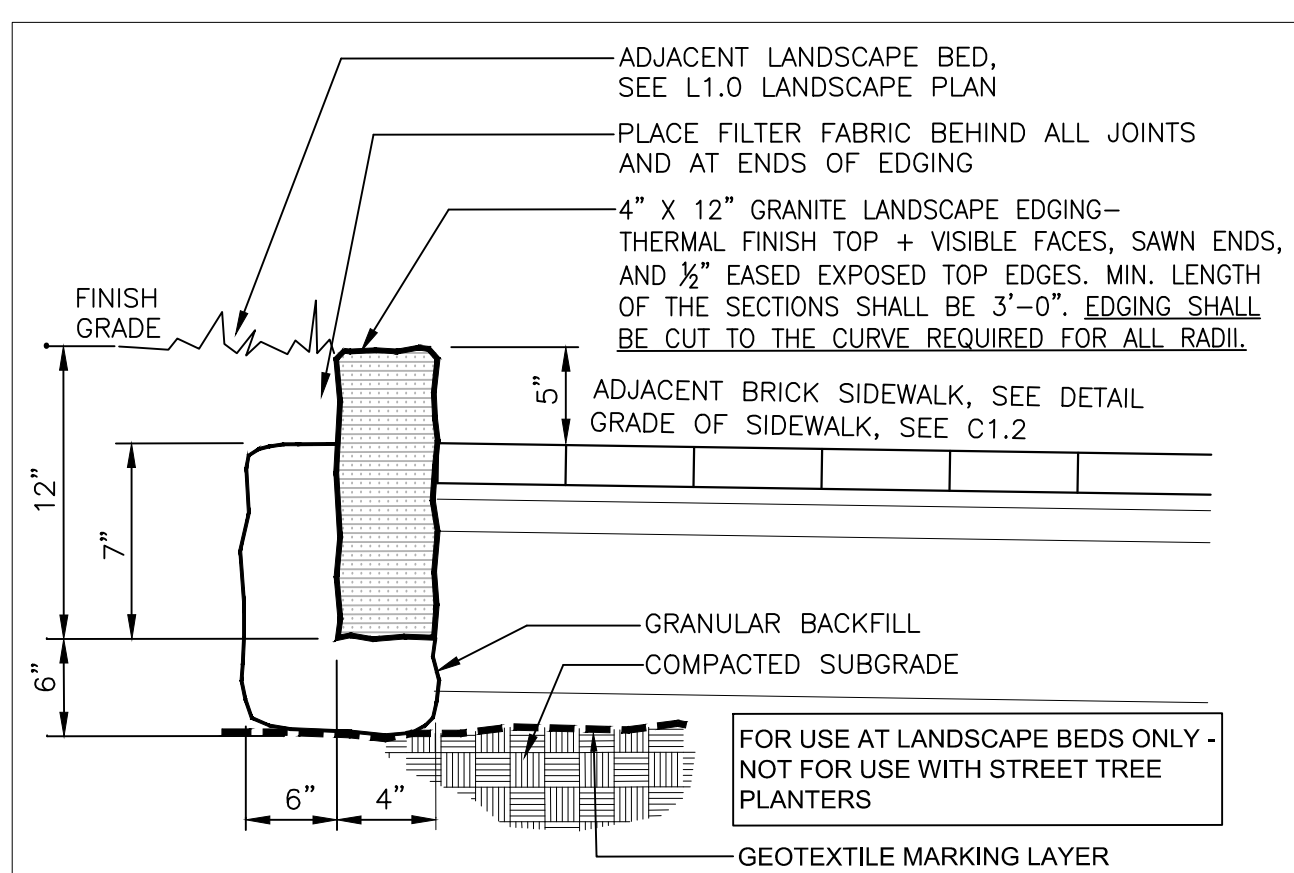
1 TYPICAL TREE PLANTING



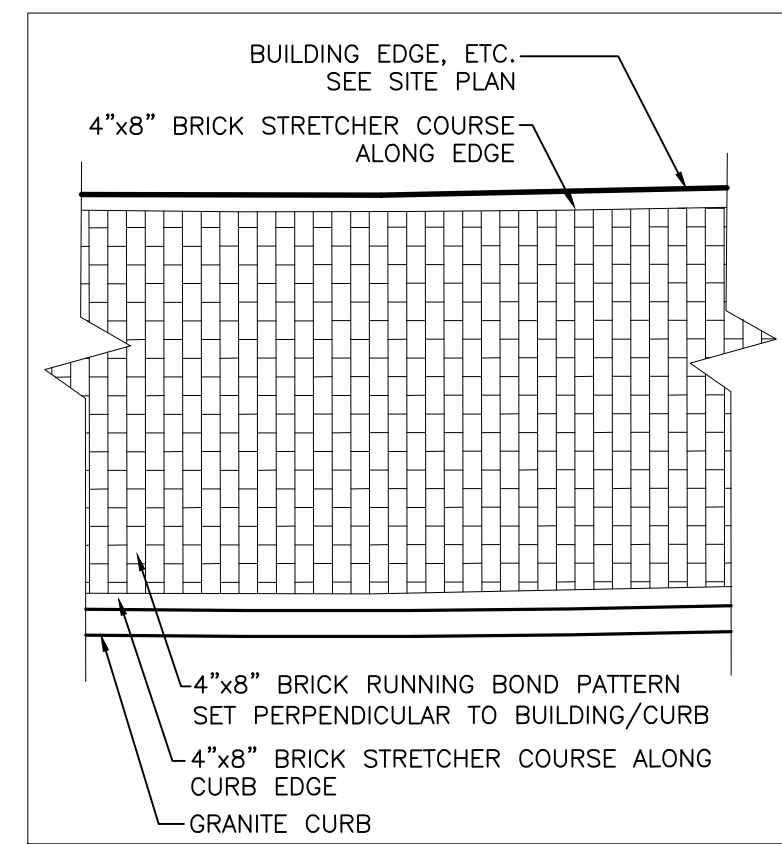
2 TYPICAL SHRUB PLANTING



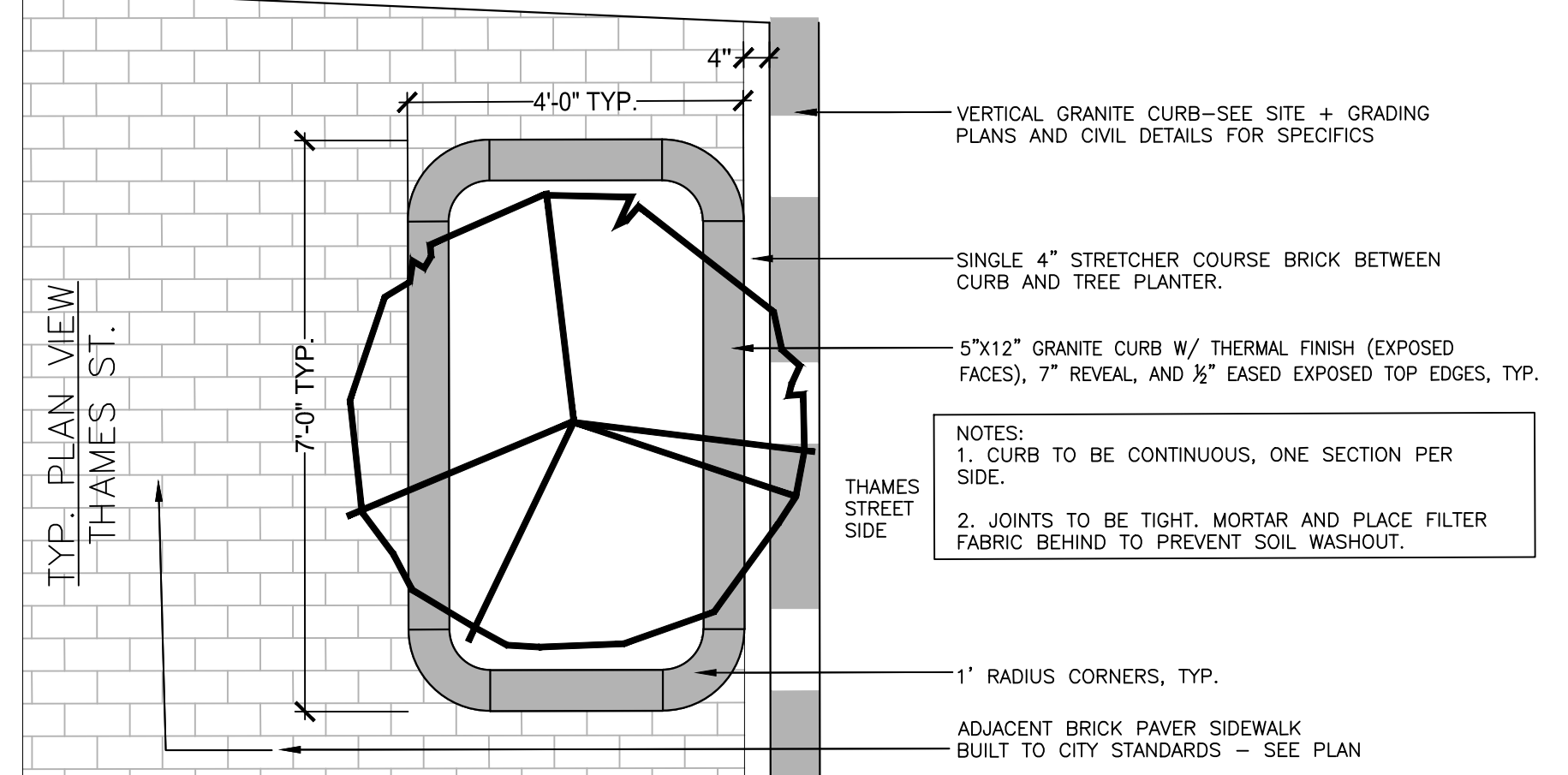
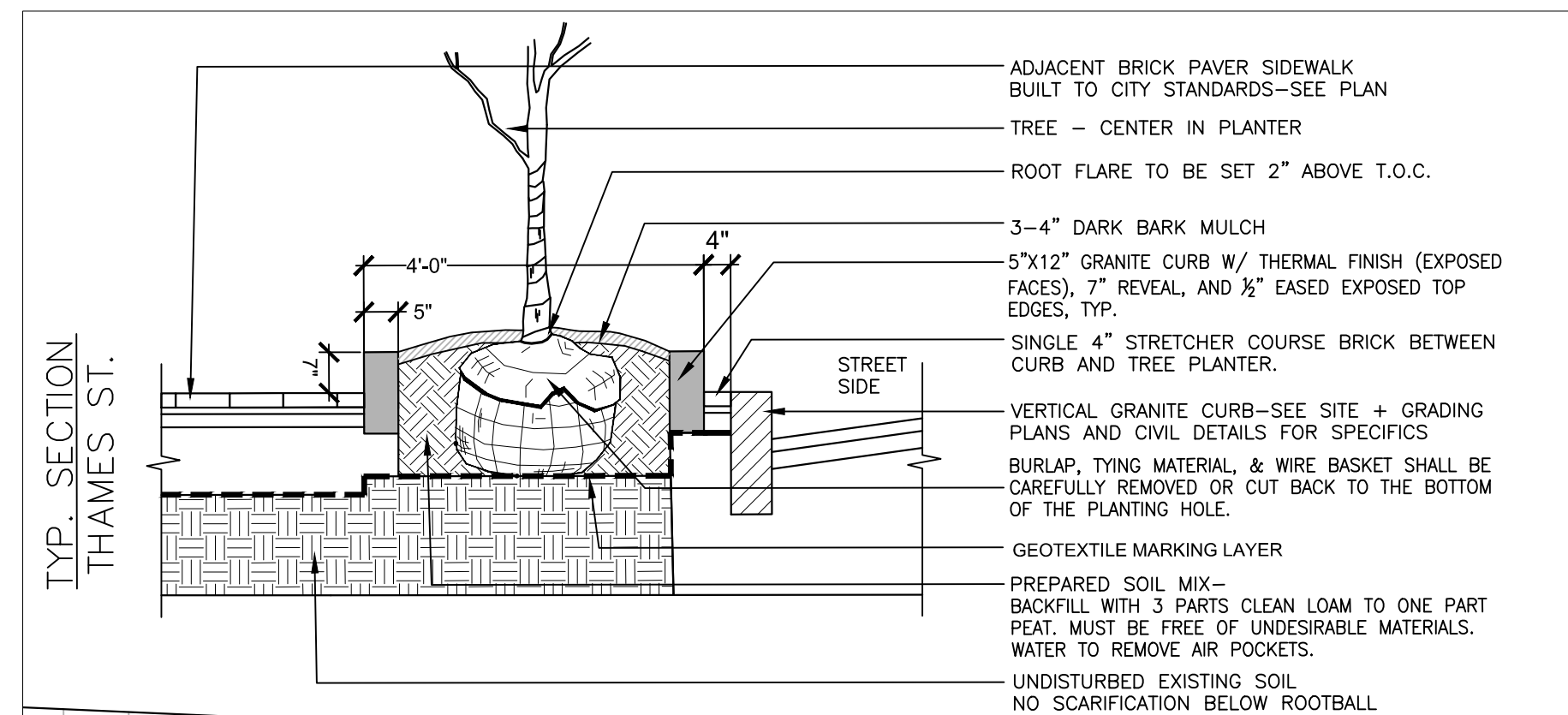
3 TYPICAL SHRUB PLANTING



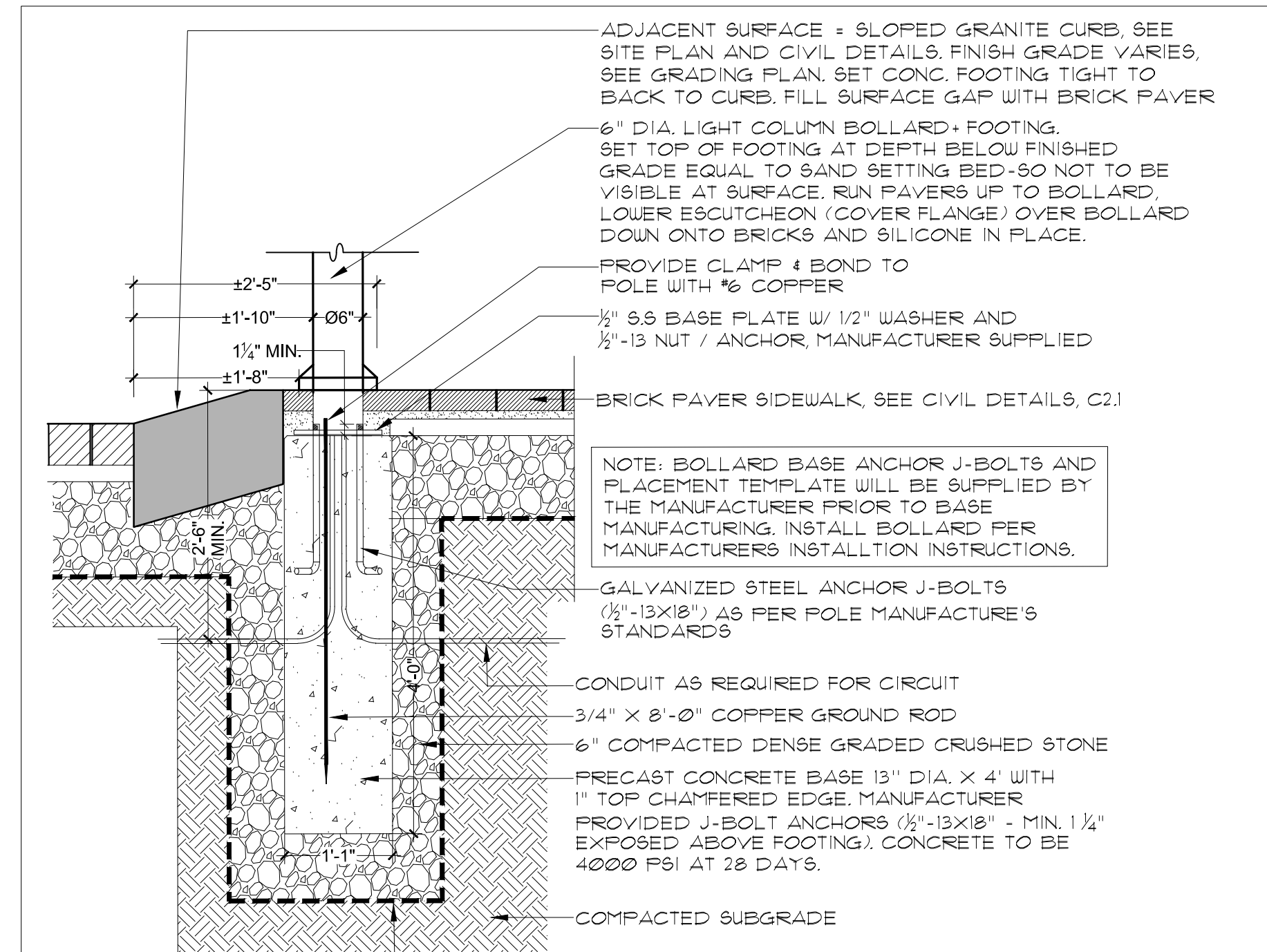
4 GRANITE LANDSCAPE EDGING



5 TYPICAL BRICK SIDEWALK PAVING PATTERN ( IN R.O.W. )



6 GRANITE TREE PLANTER AND PLANTING DETAIL



NOTE: BOLLARD BASE ANCHOR J-BOLTS AND PLACEMENT TEMPLATE WILL BE SUPPLIED BY THE MANUFACTURER PRIOR TO BASE MANUFACTURING. INSTALL BOLLARD PER MANUFACTURER'S INSTALLATION INSTRUCTIONS.

CONDUIT AS REQUIRED FOR CIRCUIT

3/4" x 8'-0" COPPER GROUND ROD

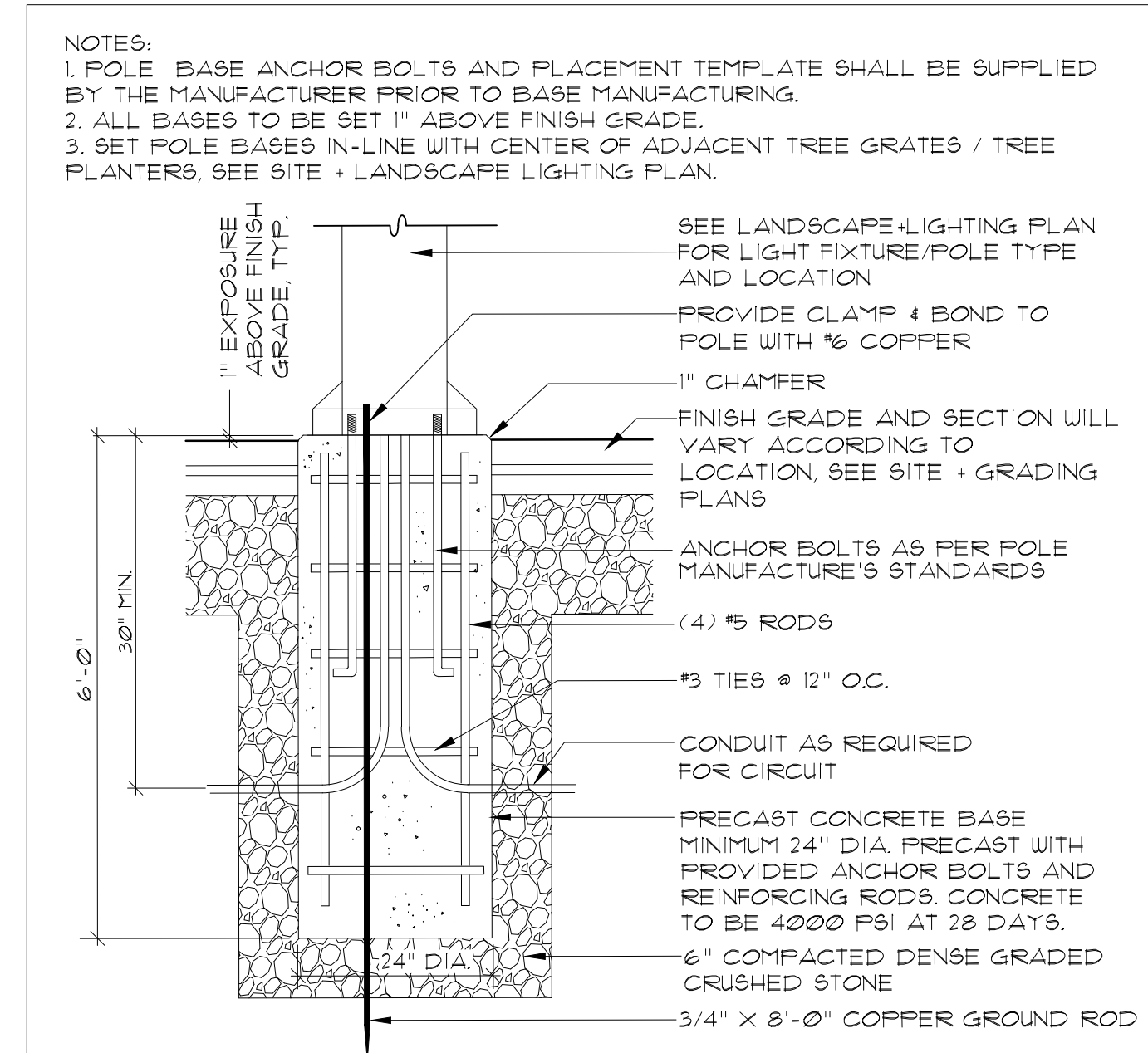
6" COMPACTED DENSE GRADED CRUSHED STONE

PRECAST CONCRETE BASE 13" DIA. X 4" WITH 1" TOP CHAMFERED EDGE. MANUFACTURER PROVIDED J-BOLT ANCHORS (1/2"-13X18") - MIN. 1 1/2" EXPOSED ABOVE FOOTING. CONCRETE TO BE 4000 PSI AT 28 DAYS.

COMPACTED SUBGRADE

GEOTEXTILE MARKING LAYER

7 LIGHT BOLLARD + BASE

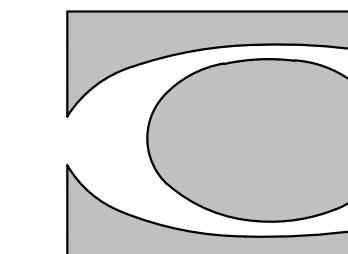
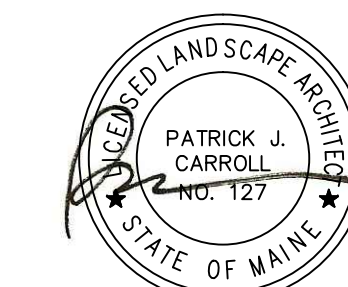


8 LIGHT POLE BASE

Project:  
**20 THAMES STREET RESIDENTIAL CONDOMINIUM**  
20 THAMES STREET  
PORTLAND, MAINE

Owner:  
**ESSEXNORTH 20 THAMES LLC**  
P.O. BOX 1383  
SANIBEL, FL 33957

Applicant:  
**ESSEXNORTH PORTLAND LLC**  
P.O. BOX 394  
TOPSFIELD, MA 01983



**CARROLL ASSOCIATES**  
LANDSCAPE ARCHITECTS  
217 COMMERCIAL STREET, STE 200  
PORTLAND, MAINE 04101  
207.772.1552



**RANSOM**  
Consulting Engineers and Scientists  
400 Commercial Street, Suite 404  
Portland, ME 04101  
Tel. (207) 772-2891  
Fax (207) 772-3248  
www.ransomenv.com

**LANDSCAPE DETAILS**

No.	Revision/Issue	Date
4	BID SET	07.14.17
3	PROGRESS SET	06.26.17
2	FINAL CITY SUBMISSION	06.09.17
1	CITY SUBMISSION	03.09.17

Design by:	MAP/PC	Checked by:	PC
Drawn by:	MAP	Approved by:	PC
Project:		Date:	MARCH 1, 2016

Sheet No:  
**L2.0**  
Sheet 12 of 23