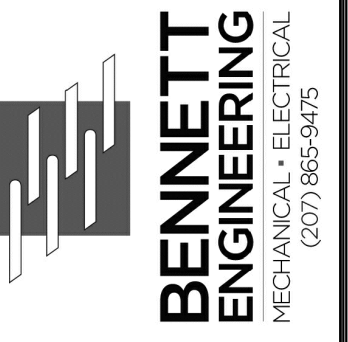
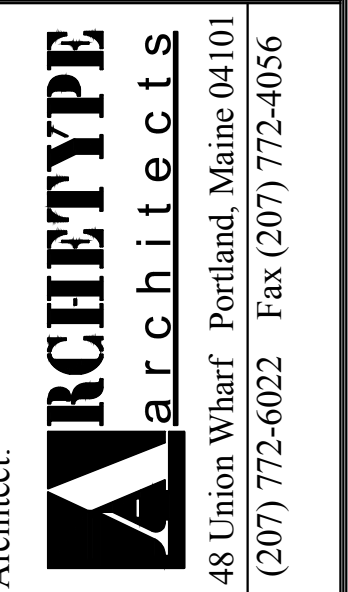


Prepared For:
**Essex North
 Portland LLC**
 P.O. Box 394
 Topsfield, MA 01983



Consultant:
**BENNETT
 ENGINEERING**
 MECHANICAL-ELECTRICAL
 (207) 865-9475



Architect:
**ARCHETYPE
 architects**
 48 Union Wharf Portland, Maine 04101
 (207) 772-6022 Fax (207) 772-4056

Project:
**THAMES STREET
 BUILDING**
 20 Thames Street, Portland Maine

Revisions:
 3 AUG 2017 - ADDENDUM 1
 15 AUG 2017 - ADDENDUM 2
 11 OCT 2017 - ADDENDUM 3

Date:
 3 AUG 2017

Scale:
 4TH FLOOR
 POWER PLAN

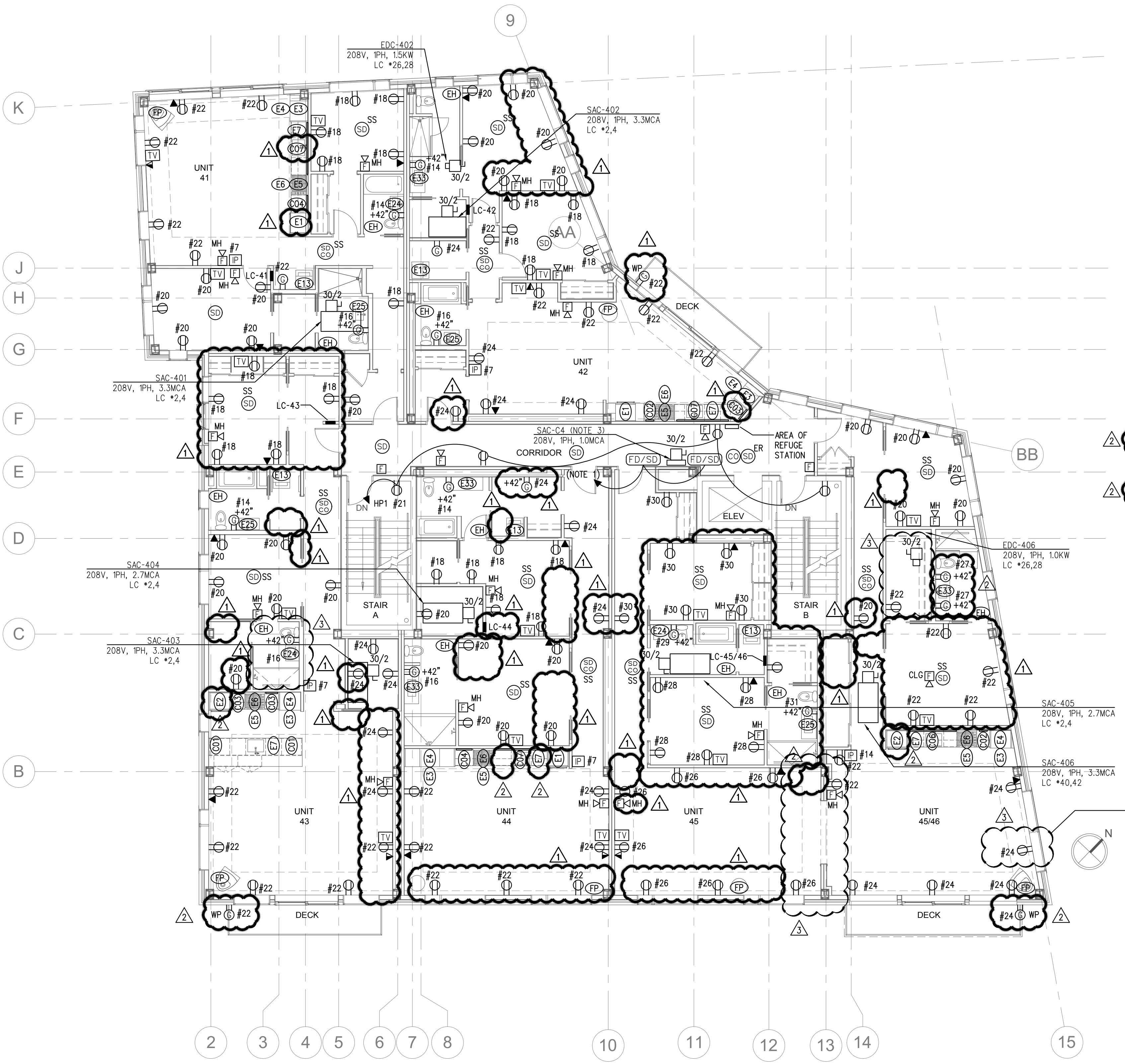
E2.04

- FOURTH FLOOR POWER PLAN NOTES:**
- INTERCONNECT ALL FOURTH FLOOR FIRE SMOKE DAMPERS WITH FIRE ALARM SYSTEM. CIRCUIT TO EP #39.
 - COORDINATE QUANTITY AND LOCATIONS WITH MECHANICAL CONTRACTOR.
 - UNLESS SPECIFICALLY NOTED OTHERWISE, CIRCUIT NUMBERS REFER TO UNIT LOAD CENTERS.
 - CIRCUIT SAC-C4 TO PANEL HP1 #14,16. PROVIDE A 30A/2P DISCONNECT SWITCH. COORDINATE LOCATION AND MOUNTING OF DISCONNECT SWITCH WITH MECHANICAL CONTRACTOR.
 - CONTRACTOR TO PROVIDE WIREMOLD AT KITCHEN COUNTERS IN LENGTHS INDICATED ON DRAWING. MOUNT TO THE UNDERSIDE OF THE UPPER CABINET AT WALL. WIREMOLD SHALL HAVE TAMPER-RESISTANT GFCI RATED RECEPTACLES AS INDICATED IN SCHEDULE. SPACE RECEPTACLES OUT EVENLY ALONG THE WIREMOLD SECTION. WIREMOLD SHALL ALSO HAVE USB CHARGING OUTLETS ADJACENT TO RECEPTACLES. COORDINATE INSTALLATION WITH UNDERCABINET LIGHTING AND INTERIOR DESIGNER. CIRCUIT WIREMOLD AND KITCHEN ISLAND RECEPTACLES SO THAT THE LOAD IS DISTRIBUTED BETWEEN 2 DEDICATED 20A CIRCUITS WITHIN THE UNIT LOAD CENTER.

EQUIPMENT SCHEDULE

ITEM #	DESCRIPTION	PLUG	DIRECT	MTG HT	CKT #	NOTES
E1	REFRIGERATOR/FREEZER	5-20R		18" AFF	#19	PROVIDE GFI RATED CIRCUIT BREAKER
E2	REFRIGERATOR/FREEZER	5-20R		18" AFF	#19	PROVIDE GFI RATED CIRCUIT BREAKER
E3	WALL OVEN	L6-30R		#11,13		PROVIDE 2 #10, 1 #12 GND, 3/4" CDT
E4	MICROWAVE	5-20R		56" AFF	#15	PROVIDE GFI RATED CIRCUIT BREAKER
E5	GAS COOK TOP	5-20R		18" AFF	#17	
E6	VENTILATION HOOD		X		#17	COORDINATE INSTALLATION W/EQUIPMENT INSTALLER
E7	DISHWASHER	5-20R			#21	PROVIDE GFCI RATED CIRCUIT BREAKER
E13	STACKABLE WASHER/DRYER	5-20R		18" AFF	#10	PROVIDE GFI RATED CIRCUIT BREAKER
		L6-30R		60" AFF	#6,8	PROVIDE GFI RATED CIRCUIT BREAKER
	DBF (DRYER EXHAUST)		X			CKT TO NEAREST RECEPTACLE CKT, COORDINATE LOCATION W/MECHANICAL
E13A	WASHER	5-20R		18" AFF	#10	PROVIDE GFI RATED CIRCUIT BREAKER
E13B	DRYER	L6-30R		18" AFF	#6,8	PROVIDE GFI RATED CIRCUIT BREAKER
	DBF (DRYER EXHAUST)		X			CKT TO NEAREST RECEPTACLE CKT, COORDINATE LOCATION W/MECHANICAL
E24	LED LIT MEDICINE CABINET		X		#9	COORDINATE INSTALLATION W/EQUIPMENT INSTALLER
E25	LED LIT MEDICINE CABINET		X		#9	COORDINATE INSTALLATION W/EQUIPMENT INSTALLER
E33	LED LIT MEDICINE CABINET		X		#9	COORDINATE INSTALLATION W/EQUIPMENT INSTALLER
E34	GAS COOK TOP	5-20R		18" AFF	#17	
E35	VENTILATION HOOD		Y		#17	COORDINATE INSTALLATION W/EQUIPMENT INSTALLER
E-39	REFRIGERATOR/FREEZER	5-20R		18" AFF	#19	PROVIDE GFI RATED CIRCUIT BREAKER
E-40	REFRIGERATOR/FREEZER	5-20R		18" AFF	#19	PROVIDE GFI RATED CIRCUIT BREAKER
C01	CONVENIENCE RECEPTACLE	5-20P		FLOUSH	#23	PROVIDE IN-COUNTER MOUNTED, POP-UP GFI RATED RECEPTACLE
C02	WIREMOLD	5-20P/USB		(NOTE 4)	#23,25	12" LONG SECTION W/1 RECEPTACLE/USB
C03	WIREMOLD	5-20P/USB		(NOTE 4)	#23,25	18" LONG SECTION W/2 RECEPTACLES/USB
C04	WIREMOLD	5-20P/USB		(NOTE 4)	#23,25	24" LONG SECTION W/2 RECEPTACLES/USB
C05	WIREMOLD	5-20P/USB		(NOTE 4)	#23,25	36" LONG SECTION W/3 RECEPTACLES/USB
C06	WIREMOLD	5-20P/USB		(NOTE 4)	#23,25	72" LONG SECTION W/6 RECEPTACLES/USB
C07	WIREMOLD	5-20P/USB		(NOTE 4)	#23,25	78" LONG SECTION W/6 RECEPTACLES/USB
EH	ELECTRIC RADIANT HEAT		X		#5	COORDINATE WITH MECHANICAL CONTRACTOR
FP	FIREPLACE		X		#12	

CIRCUITING OF RECEPTACLES HAS CHANGE. ALL CIRCUIT NOW GO TO LOAD CENTER 45/46.



FOURTH FLOOR POWER
 SCALE: 1/8" = 1'-0"