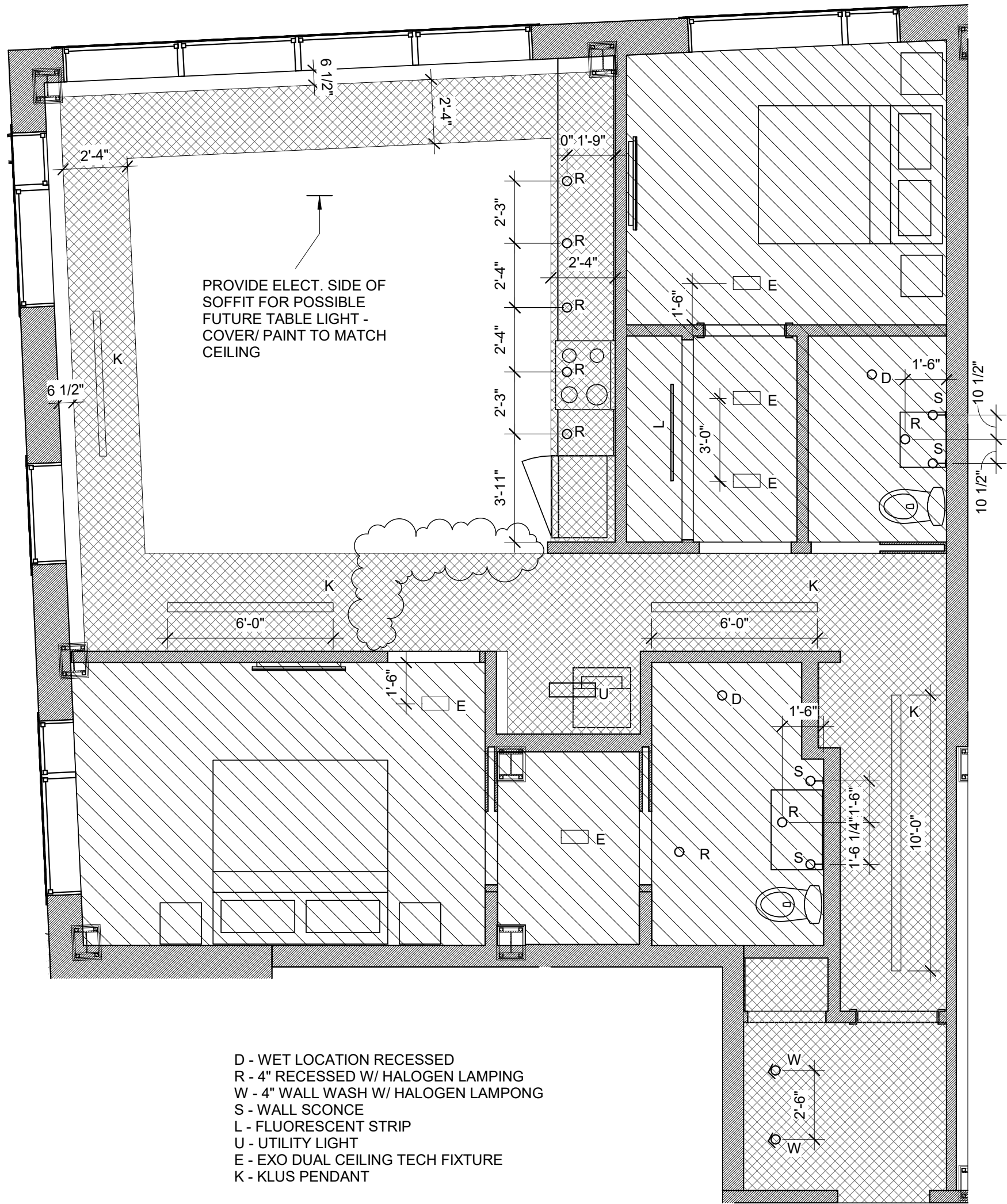


GENERAL NOTE:

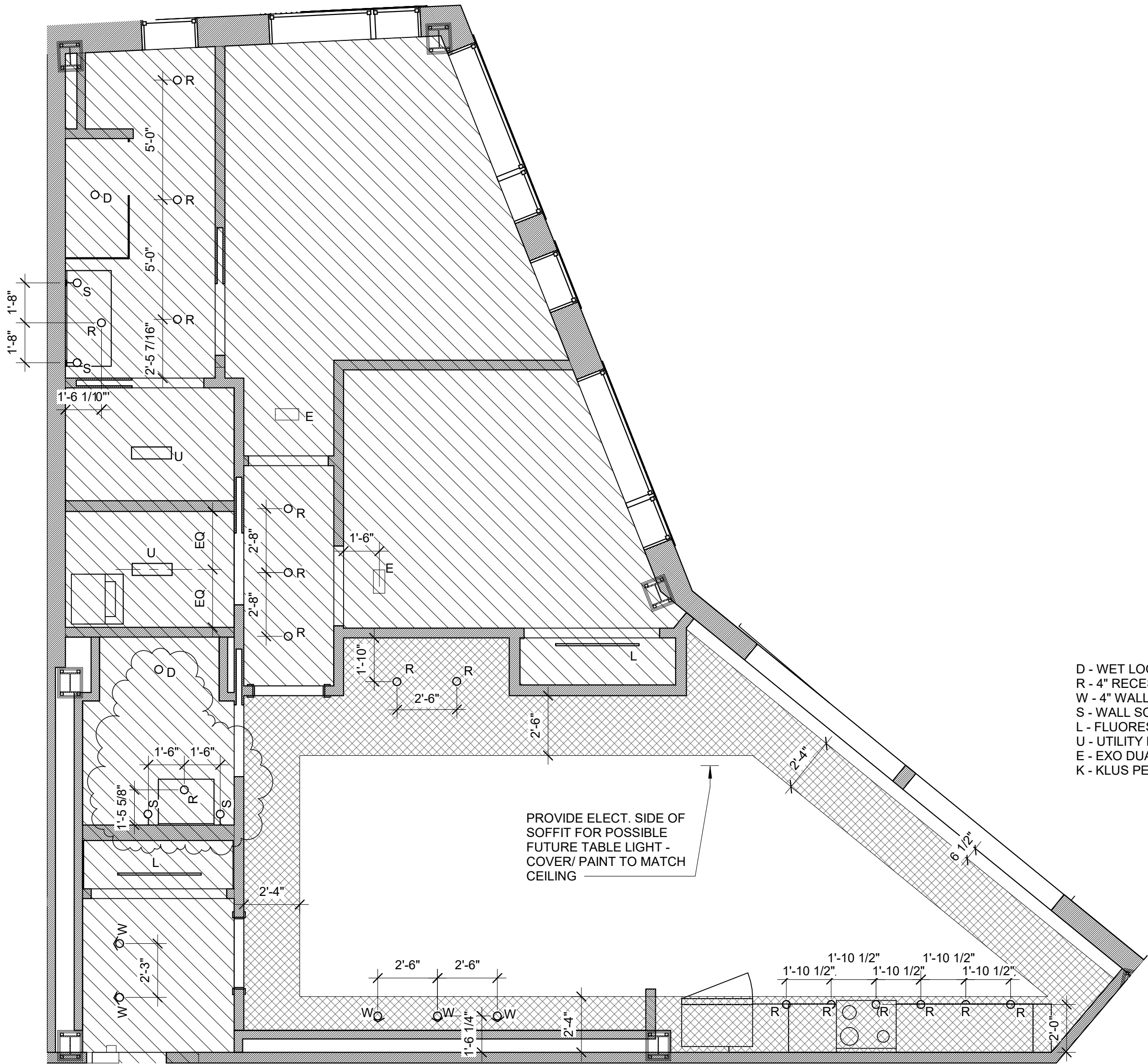
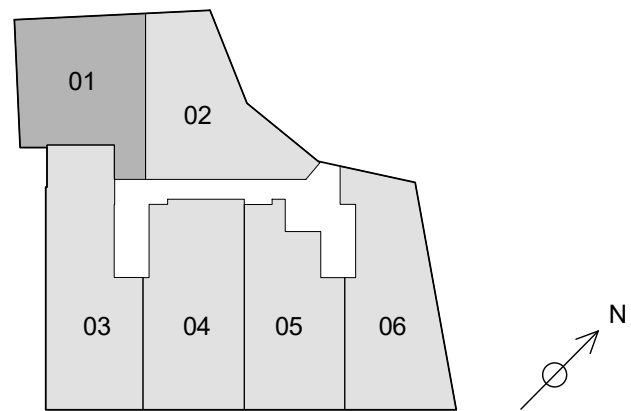
1. ARCHITECTURAL CEILING PLANS DO NOT SHOW ALL PROJECT LIGHTS. SEE LIFE SAFETY PLANS FOR LIFE SAFETY FIXTURES AND ELECTRICAL PLANS FOR ADDITIONAL FIXTURES.
2. LIGHTS OR CEILING ELEMENTS NOT DIMENSIONED AND GRAPHICALLY SHOWN AS CENTERED IN A SPACE OR CENTERED ON A WALL OR ELEMENT ARE TO BE LOCATED CENTERED IN THAT SPACE OR ON THAT ELEMENT.
3. PROVIDE FULL LENGTH UNDERCOUNTER LIGHTS FOR ALL PROJECT UPPERS
4. CENTER VANITY SCONCES ABOVE VANITIES U.N.O.
5. TRACK LIGHTING LOCATION WITHIN UNITS - WHEN LOCATED ALONG A LENGTH OF WALL AND NOT DIMENSIONED OTHERWISE HOLD TRACK LIGHTING AND WALL WASHERS 1'-6" OFF OF WALL SURFACE.
6. HOODS ARE TO BE CENTERED ABOVE RANGES. CONTRACTOR TO VERIFY RANGE AND HOOD LOCATIONS AS DIMENSIONED.
7. SEE ELECTRICAL DRAWINGS AND SPECIFICATIONS FOR FIXTURE TYPE.
8. PROVIDE CLOSET LIGHTING AS NOTED IN ELECTRICAL DRAWINGS.

RCP LEGEND

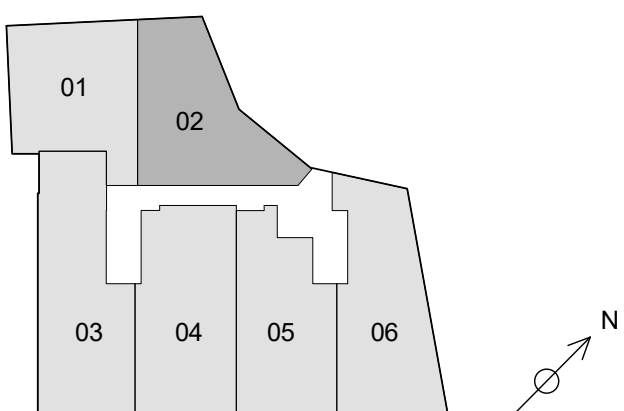
- = GYP CEILING AS PART OF THE FLOOR/ CEILING ASSEMBLY
- = GYP CEILING SECURED AT 8'-6" A.F.F. UNLESS NOTED OTHERWISE ON THE RCP
- = GYP CEILING SECURED AT 9'-4" A.F.F.



1 | RCP UNIT 01
1/4" = 1'-0"



2 | RCP UNIT 02
1/4" = 1'-0"



DAVID LLOYD
NO. 936

LICENSED ARCHITECT
STATE OF MAINE

EssexNorth
Portland LLC

P.O. Box 394
Topsfield, MA 01983

Prepared For:

Consultant:

Architect:

Project:

Revisions:

4 | 08/15/17 | ADDENDUM 2

Date:

15 AUG 2017

Scale:

As indicated

RCP'S - UNITS 01 & 02

A7.04