
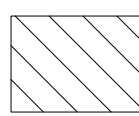
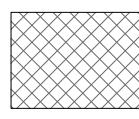
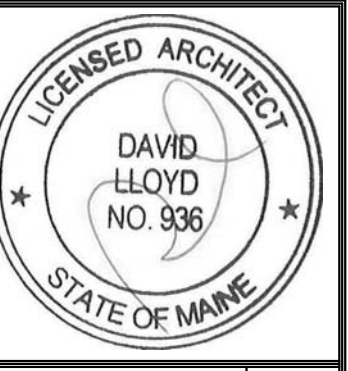


GENERAL NOTE:

1. ARCHITECTURAL CEILING PLANS DO NOT SHOW ALL PROJECT LIGHTS. SEE LIFE SAFETY PLANS FOR LIFE SAFETY FIXTURES AND ELECTRICAL PLANS FOR ADDITIONAL FIXTURES.
2. LIGHTS OR CEILING ELEMENTS NOT DIMENSIONED AND GRAPHICALLY SHOWN AS CENTERED IN A SPACE OR CENTERED ON A WALL OR ELEMENT ARE TO BE LOCATED CENTERED IN THAT SPACE OR ON THAT ELEMENT.
3. PROVIDE FULL LENGTH UNDERCOUNTER LIGHTS FOR ALL PROJECT UPPERS
4. CENTER VANITY SCONCES ABOVE VANITIES U.N.O.
5. TRACK LIGHTING LOCATION WITHIN UNITS - WHEN LOCATED ALONG A LENGTH OF WALL AND NOT DIMENSIONED OTHERWISE HOLD TRACK LIGHTING AND WALL WASHERS 1'-6" OFF OF WALL SURFACE.
6. HOODS ARE TO BE CENTERED ABOVE RANGES. CONTRACTOR TO VERIFY RANGE AND HOOD LOCATIONS AS DIMENSIONED.
7. SEE ELECTRICAL DRAWINGS AND SPECIFICATIONS FOR FIXTURE TYPE.
8. PROVIDE CLOSET LIGHTING AS NOTED IN ELECTRICAL DRAWINGS.

RCP LEGEND

-  = GYP CEILING AS PART OF THE FLOOR/CEILING ASSEMBLY
-  = GYP CEILING SECURED AT 8'-6" A.F.F. UNLESS NOTED OTHERWISE ON THE RCP
-  = GYP CEILING SECURED AT 9'-4" A.F.F.



Prepared For:
**EssexNorth
 Portland LLC**
 P.O. Box 394
 Topsfield, MA 01983

Consultant:

ARCHETYPE
 architects
 48 Union Wharf Portland, Maine 04101
 (207) 772-6022 Fax (207) 772-4056

Project:

**THAMES STREET
 CONDOMINIUM**
 20 Thames Street, Portland Maine

Revisions:

4 08/15/17 ADDENDUM 2

Date:
 15 AUG 2017

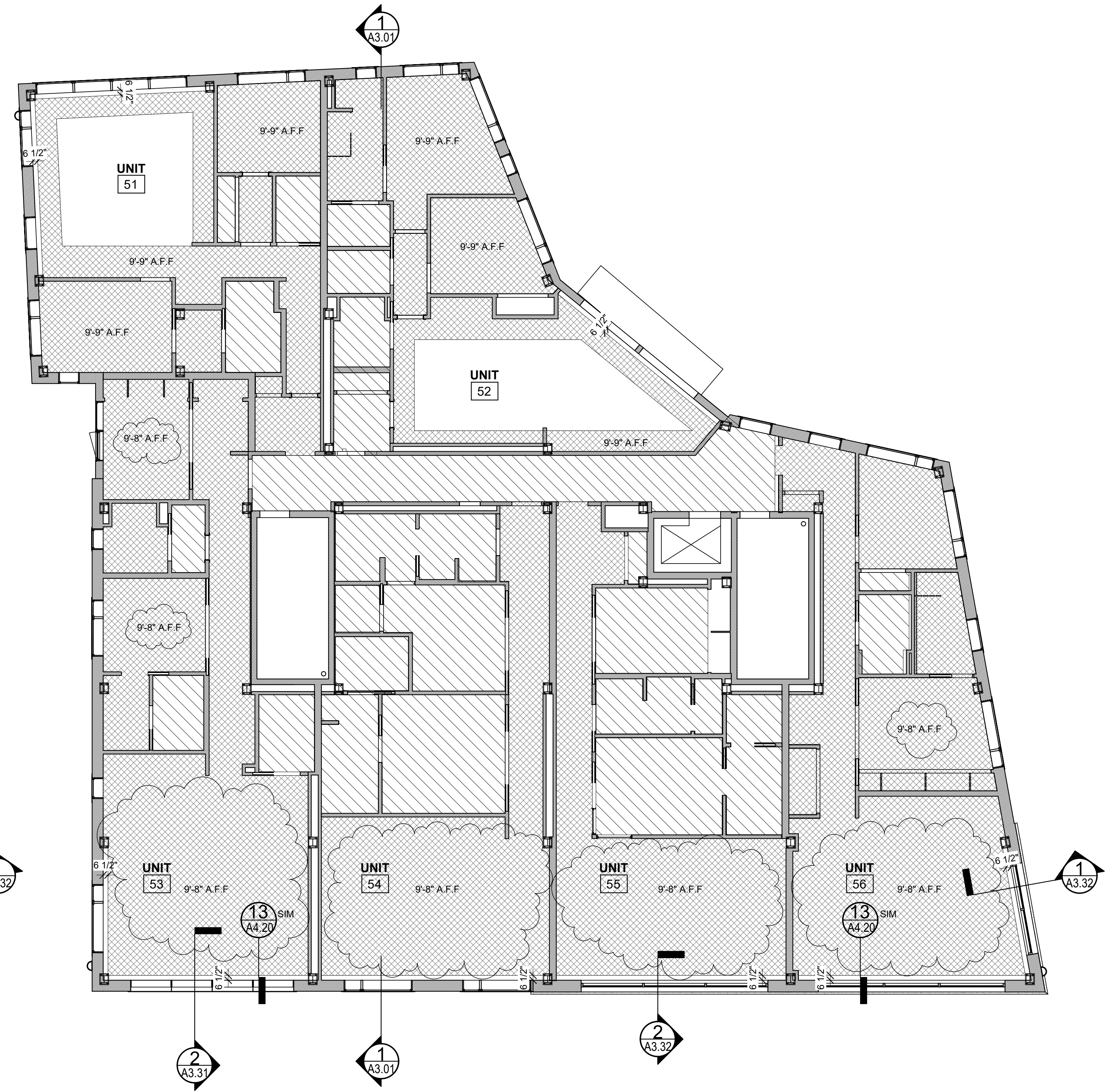
Scale:
 1/8" = 1'-0"

**REFLECTED CEILING
 PLANS**

A7.03



6 | 6TH FLOOR
 1/8" = 1'-0"



5 | 5TH FLOOR
 1/8" = 1'-0"

